



Aerial view of Coffs Harbour looking east

Coffs Harbour bypass – Planning

Project update - December 2016

The NSW Government is funding the planning of the Coffs Harbour bypass. The project includes around a 14 kilometre motorway standard upgrade of the Pacific Highway from Englands Road in the south and connects with the new four-lane divided highway at Sapphire in the north.

This project update is to inform the community on the progress of refining the concept design and preparing the Environmental Impact Statement for the Coffs Harbour Bypass.

Update

In August and September 2016, Roads and Maritime displayed the preliminary concept design from 2008 for community feedback.

There was a high response from the community with about 400 people attending the community drop-in sessions and many written responses received.

Some of the key themes identified in the feedback include:

- Design
- Route selection process
- Noise – mitigation, construction and operational impacts
- Property impacts
- Air quality
- Construction impacts
- Environmental impacts
- Consultation process

- School impacts – Kororo Public School and Bishop Druitt College.

For more details about the feedback and key themes, a Community Feedback Summary is available on the project website at www.rms.nsw.gov.au/coffsharbourbypass

Feedback received on the preliminary concept design will be considered as part of the development of the Environmental Impact Statement.

The community will continue to have opportunities to provide more feedback.

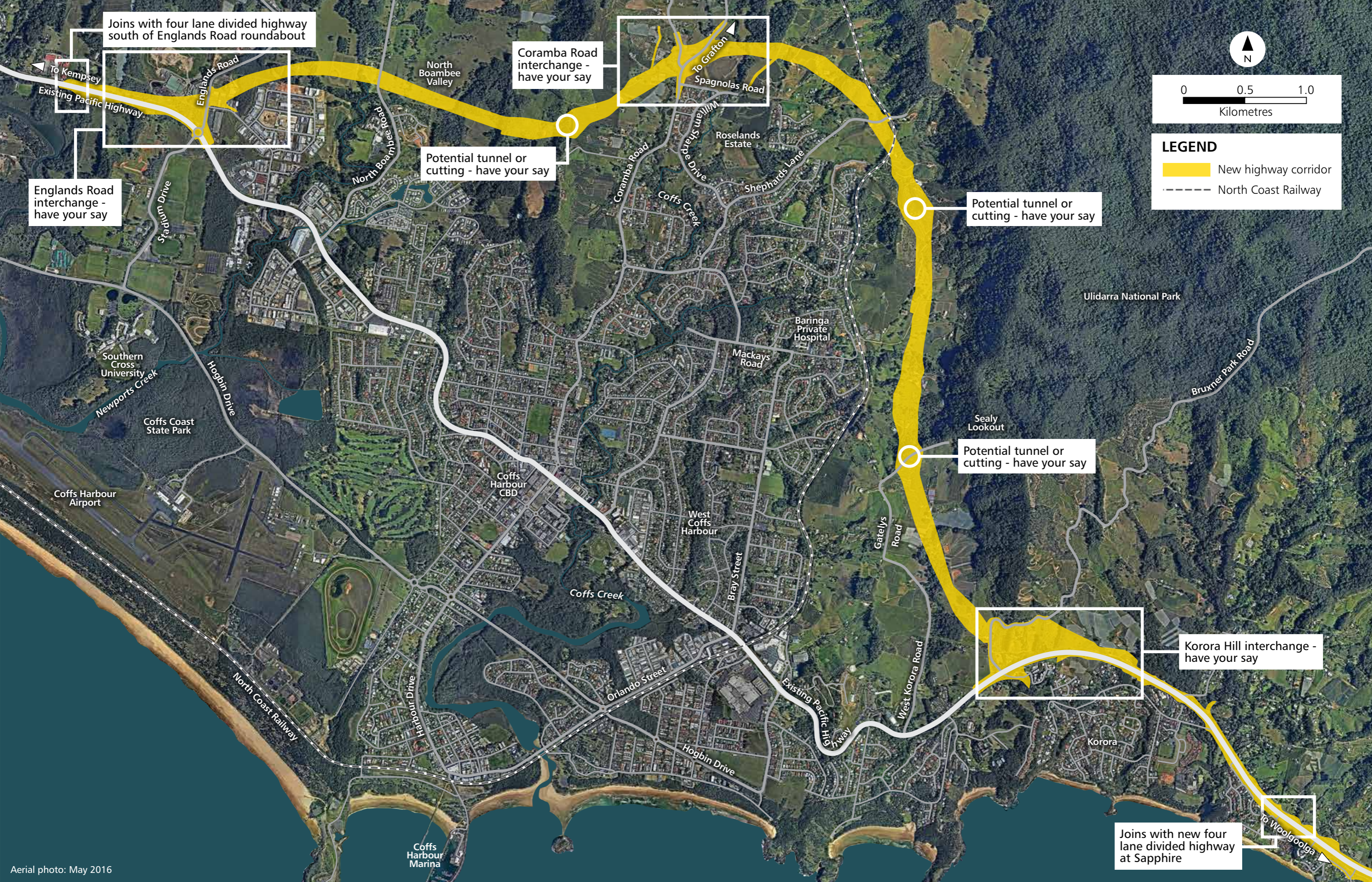
Interactive map now available

Throughout the display, we received feedback and requests for access to more maps on the preferred corridor for the project. You can view a map of the corridor on the following pages of this update. More detailed mapping is also available online via the interactive mapping portal.

The interactive map shows the boundaries of the project corridor, interchange locations and the proposed tunnels or cuttings giving you the option to have your say on these further design options.

Head to www.rms.nsw.gov.au/projects/northern-nsw/coffs-harbour-bypass to find out more and connect to the mapping portal.

Coffs Harbour bypass - preliminary concept design



Aerial photo: May 2016

Business and community survey

A business and community survey has recently been launched to assist with understanding the benefits and impacts associated with the Coffs Harbour bypass.

The survey responses will help inform the traffic and transport investigations and the social impact assessment required for the Environmental Impact Statement.

Visit www.rms.nsw.gov.au/projects/northern-nsw/coffs-harbour-bypass to access the survey online. If you would prefer to complete the survey in hard copy, please call **1800 550 621** to request a form to be sent to you. Responses to the survey are requested by **Monday 30 January 2017**.

Next steps

Roads and Maritime will continue to refine the concept design and prepare the Environmental Impact Statement over the coming months. We encourage the community to continue providing feedback on the project.

We expect to display the refined concept design for feedback by mid-2017. The display of the Environmental Impact Statement will follow some time after all feedback has been considered and investigations and field work completed.

Building timeframes for the bypass have not been determined and will depend on funding availability.

Contact us

For more information on the Coffs Harbour bypass project or to provide feedback, please contact the project team:

☎ 1800 550 621

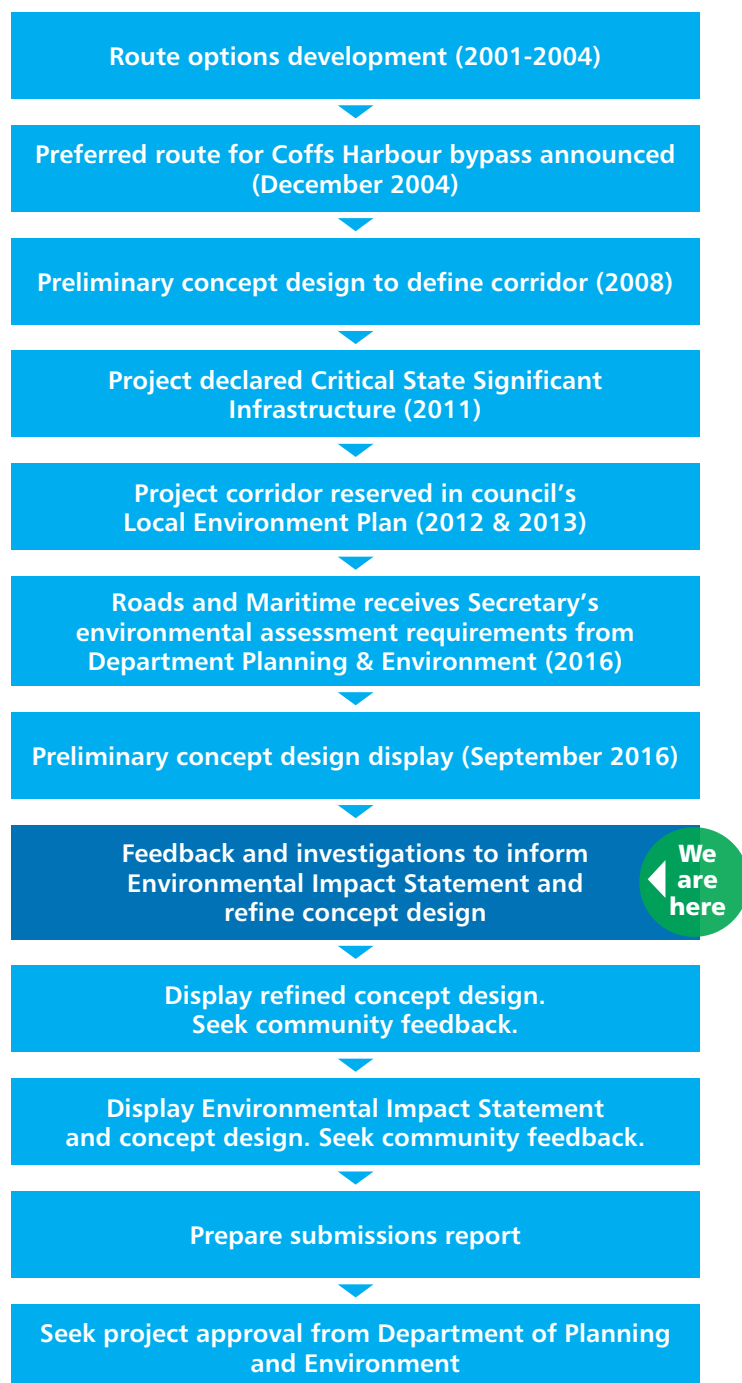
@ coffsharbourbypass@rms.nsw.gov.au

✉ Coffs Harbour bypass project,
Roads and Maritime Services,
21 Prince Street, Grafton NSW 2460

💻 www.rms.nsw.gov.au/coffsharbourbypass

To register yourself on the project mailing list please visit: www.surveymonkey.com/r/coffsharbourbypass

What happens next



Privacy

Roads and Maritime Services ("RMS") is subject to the *Privacy and Personal Information Protection Act 1998* ("PIIP Act") which requires that we comply with the Information Privacy Principles set out in the PIIP Act.

All information in correspondence is collected for the sole purpose of assisting in the assessment of this proposal/ delivering this project. The information received, including names and addresses of respondents, may be published in subsequent documents unless a clear indication is given in the correspondence that all or part of that information is not to be published. Otherwise RMS will only disclose your personal information, without your consent, if authorised by the law. Your personal information will be held by RMS at 76 Victoria St, Grafton NSW. You have the right to access and correct the information if you believe that it is incorrect.

