

**LEGEND**

- CHCC Preferred Corridor (adopted at a special meeting on 29 October 2003)
- Local Government Area Boundary
- Coastal Route Options
- Coastal Ridge Way / Option A
- Western Bucca Valley / Option A
- Western Bucca Valley / Corindi River
- Western Bucca Valley / Sherwood Creek
- Existing Highway
- Halfway Creek Upgrade
- Tunnel Section
- National Park/Nature Reserve
- State Forest
- Protected Areas within State Forests

**Vegetation Values**

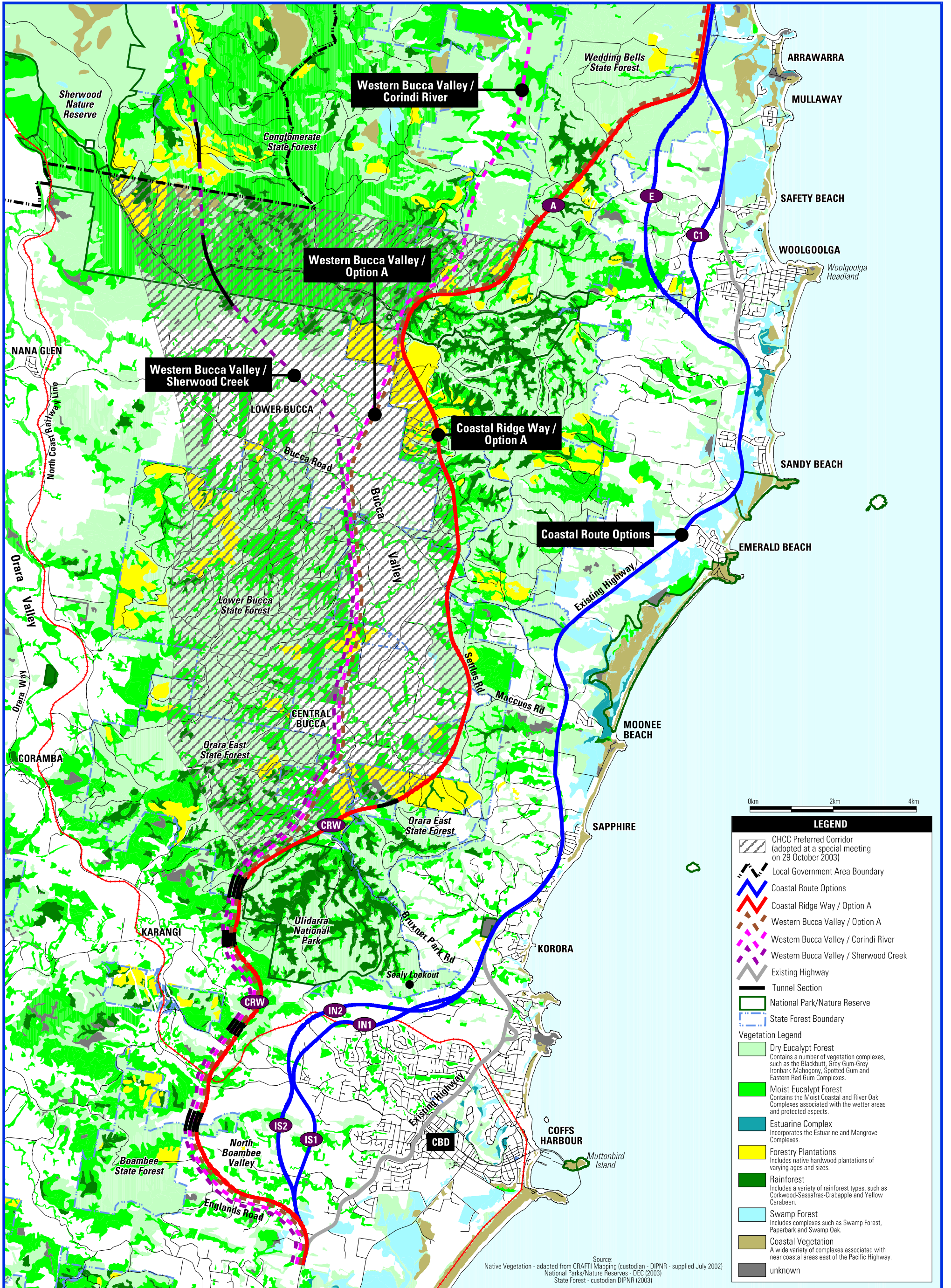
- Very High Ecological Status
- High Ecological Status
- Medium Ecological Status
- Low Ecological Status

Source:  
Vegetation Values - CHCC, September 2002  
National Parks/Nature Reserves - DEC (2003)  
State Forest - custodian DIPNR (2003)

COFFS HARBOUR HIGHWAY PLANNING  
CHCC PREFERRED CORRIDOR  
FEASIBILITY ASSESSMENT



**FIGURE 2.3**  
**DRAFT CHCC VEGETATION**  
**MANAGEMENT STRATEGY**



**LEGEND**

- CHCC Preferred Corridor (adopted at a special meeting on 29 October 2003)
- Local Government Area Boundary
- Coastal Route Options
- Coastal Ridge Way / Option A
- Western Bucca Valley / Option A
- Western Bucca Valley / Corindi River
- Western Bucca Valley / Sherwood Creek
- Existing Highway
- Tunnel Section
- National Park/Nature Reserve
- State Forest Boundary

**Vegetation Legend**

- Dry Eucalypt Forest  
Contains a number of vegetation complexes, such as the Blackbutt, Grey Gum-Grey Ironbark-Mahogany, Spotted Gum and Eastern Red Gum Complexes.
- Moist Eucalypt Forest  
Contains the Moist Coastal and River Oak Complexes associated with the wetter areas and protected aspects.
- Estuarine Complex  
Incorporates the Estuarine and Mangrove Complexes.
- Forestry Plantations  
Includes native hardwood plantations of varying ages and sizes.
- Rainforest  
Includes a variety of rainforest types, such as Corkwood-Sassafras-Crabapple and Yellow Carabeen.
- Swamp Forest  
Includes complexes such as Swamp Forest, Paperbark and Swamp Oak.
- Coastal Vegetation  
A wide variety of complexes associated with near coastal areas east of the Pacific Highway.
- unknown

Source:  
Native Vegetation - adapted from CRAFT1 Mapping (custodian - DIPNR - supplied July 2002)  
National Parks/Nature Reserves - DEC (2003)  
State Forest - custodian DIPNR (2003)



**FIGURE 2.4  
VEGETATION MAP**