



New South Wales Government



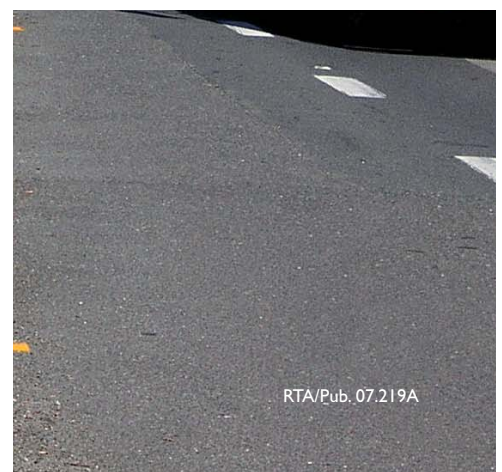
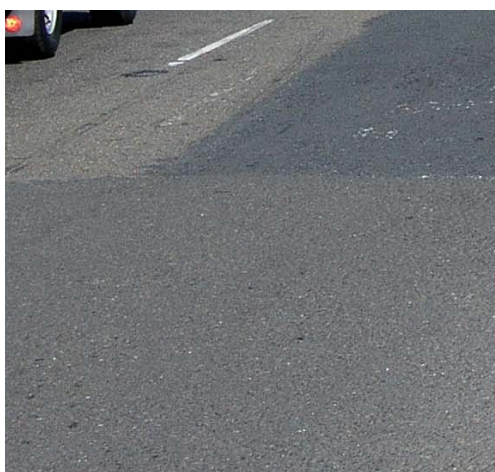
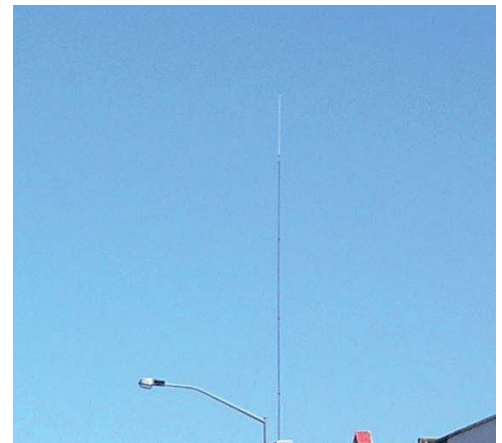
# Kempsey to Eungai

Upgrading the Pacific Highway

## ENVIRONMENTAL ASSESSMENT

VOLUME I - ENVIRONMENTAL ASSESSMENT

JULY 2007





New South Wales Government



# Kempsey to Eungai

Upgrading the Pacific Highway

---

## **ENVIRONMENTAL ASSESSMENT**

VOLUME I - ENVIRONMENTAL ASSESSMENT

**JULY 2007**



Parsons Brinckerhoff Australia Pty Limited ACN 078 004 798

Ernst & Young Centre  
680 George Street  
Sydney NSW 2000  
GPO Box 5394  
Sydney NSW 2001  
Australia  
Telephone +61 2 9272 5100  
Facsimile +61 2 9272 5101  
Email [sydney@pb.com.au](mailto:sydney@pb.com.au)

ABN 80 078 004 798  
NCSI Certified Quality System ISO 9001  
NCSI Certified Environmental Management System ISO 14001

2116519A  
ISBN 9781921242847

# Statement of validity

Submission of Environmental Assessment

Prepared under Part 3A of the *Environmental Planning and Assessment Act 1979*

Environmental Assessment prepared by:

---

<b>Name:</b>	Bruce Lean
<b>Qualifications:</b>	BSc MNatRes
<b>Address:</b>	Parsons Brinckerhoff Pty Ltd Level 27, 680 George Street Sydney NSW 2000
<b>In respect of:</b>	Kempsey to Eungai Pacific Highway Upgrade – Environmental Assessment
<b>Applicant name:</b>	NSW Roads and Traffic Authority
<b>Applicant address:</b>	Pacific Highway Office 21 Prince Street Grafton NSW 2460
<b>Proposed development:</b>	Approximately 40.8 kilometres of four-lane divided carriageway and associated infrastructure between 7 kilometres (approx.) south of Kempsey to Eungai Rail bypassing the townships of Kempsey and Frederickton and incorporating interchanges at South Kempsey, Frederickton and Stuarts Point Road, as outlined in the Environmental Assessment.
<b>Land to be developed:</b>	Land generally required for the design refinement, construction and operation of the proposed development, as shown in Figure I-3.
<b>Environmental Assessment:</b>	An Environmental Assessment is attached which addresses all matters in accordance with Part 3A of the <i>Environmental Planning and Assessment Act 1979</i> .
<b>Declaration</b>	I certify that I have prepared the contents of this Environmental Assessment in accordance with the Director General's requirements dated 22 September 2006 and that to the best of my knowledge; the information contained in the Environmental Assessment is not false or misleading.

---

<b>Signature:</b>	
<b>Name:</b>	Bruce Lean
<b>Date:</b>	19.7.07

# Table of contents

## Glossary and abbreviations

## Executive summary

## PART A – INTRODUCTION AND NEED FOR THE PROPOSAL

### 1. Introduction

1.1	What is proposed?.....	1
1.1.1	The Pacific Highway Upgrade Program.....	1
1.1.2	Overview of the proposed upgrade.....	2
1.2	How has the proposed upgrade been developed?.....	5
1.3	How will the proposed upgrade be assessed?.....	6
1.3.1	The Environmental Assessment.....	6
1.3.2	Opportunities for public comment.....	7
1.3.3	Consideration of submissions.....	7
1.3.4	Director-General Report to the Minister for Planning.....	8
1.3.5	Making a decision.....	8
1.3.6	Post-approval activities.....	8
1.4	Approach to the Environmental Assessment.....	8
1.5	Structure and content of the Environmental Assessment.....	9

### 2. Context and need for the proposed upgrade

2.1	Growth context.....	13
2.1.1	Sydney–Brisbane corridor.....	13
2.1.2	Mid North Coast region.....	13
2.1.3	Macleay Valley.....	14
2.2	Planning for growth.....	15
2.2.1	AusLink White Paper.....	15
2.2.2	NSW State Infrastructure Strategy.....	15
2.2.3	Draft Mid North Coast Regional Strategy 2006-31.....	15
2.2.4	North Coast Urban Planning Strategy 1995.....	16
2.3	Transport context.....	16
2.3.1	Road conditions.....	16
2.3.2	Local road network.....	17
2.3.3	Traffic and road safety.....	19
2.3.4	Transportation.....	20
2.4	Need and anticipated benefits.....	21
2.4.1	Need for the proposed upgrade.....	21
2.4.2	Anticipated project benefits.....	22
2.5	Objectives to address identified needs.....	23

### 3. Planning and approvals

3.1	Part 3A and the project approval process.....	25
3.1.1	Overview.....	25
3.1.2	What is critical infrastructure?.....	25
3.1.3	What is project approval?.....	27
3.1.4	The Project Application and Project Application Report.....	27
3.1.5	Planning focus meetings.....	27
3.1.6	Environmental Assessment requirements.....	28
3.1.7	The Environmental Assessment.....	28
3.1.8	Assessment and determination.....	28
3.2	Other approvals and relevant planning documents.....	29
3.2.1	NSW Government approvals.....	29
3.2.2	Commonwealth approvals.....	29
3.2.3	Other relevant planning instruments.....	30
3.2.4	Other relevant local planning documents.....	32

## 4. Community and stakeholder involvement

4.1	Overview.....	33
4.2	Communications strategy.....	33
4.3	Community and stakeholder consultation activities.....	34
4.3.1	Route selection phase.....	36
4.3.2	Concept design and environmental assessment phase.....	40
4.4	Summary of community and stakeholder issues and concerns.....	44

## PART B – ROUTE SELECTION AND DESIGN DEVELOPMENT

### 5. Approach to route selection and design

5.1	Route selection.....	47
5.1.1	Route options development.....	47
5.1.2	Selection of the preferred route.....	50
5.2	Development of the concept design.....	50
5.2.1	Design and engineering principles and criteria.....	51
5.2.2	Design context and constraints.....	52
5.3	Design alternatives.....	53
5.3.1	Approach to assessment of design alternatives.....	53
5.3.2	Interchange locations and configurations.....	53
5.3.3	Floodplain bridging.....	62
5.3.4	Local road connections.....	62
5.4	Summary of design responses and other refinements.....	63
5.5	How the community and stakeholders influenced the concept design development.....	66

## PART C – THE PROPOSAL

### 6. Concept design

6.1	Highway design.....	67
6.1.1	Overview.....	67
6.1.2	Alignment.....	67
6.1.3	Interchanges and intersections.....	89
6.1.4	Structures.....	93
6.1.5	Pavements.....	100
6.1.6	Rest areas and emergency lay-by areas.....	101
6.1.7	Lighting, fencing and signage.....	101
6.1.8	Geotechnical issues.....	102
6.2	Flood protection and drainage.....	102
6.2.1	Flooding controls.....	103
6.2.2	Frederickton levee.....	103
6.2.3	Cross drainage and highway drainage.....	104
6.2.4	Water quality controls.....	105
6.3	Noise attenuation.....	107
6.4	Local transport network.....	107
6.5	Services.....	107
6.5.1	Relocation of existing services.....	107
6.5.2	Provision for new services.....	109
6.6	Concept urban and landscape design.....	109
6.6.1	Urban and landscape design strategy.....	109
6.7	Establishing the corridor.....	111
6.7.1	Road corridor requirements.....	111

## 7. Refinement of the concept design, detailed design and construction of the proposed upgrade

7.1	Project delivery.....	113
7.2	Refining the concept design and detailed design.....	113
7.2.1	General.....	113
7.2.2	Key issues for detailed design.....	120
7.3	Construction approach.....	121
7.3.1	Construction activities.....	121
7.3.2	Construction staging and traffic management.....	122
7.3.3	Construction methods.....	125
7.4	Equipment, resources and labour.....	125
7.4.1	Plant and machinery.....	125
7.4.2	Materials.....	127
7.4.3	Water usage.....	127
7.4.4	Other opportunities for sustainable construction.....	128
7.4.5	Workforce and working hours.....	128
7.5	Ancillary construction facilities.....	129

## 8. Environmental management

8.1	RTA environmental management framework.....	131
8.1.1	RTA Environmental Management System.....	131
8.2	Contractor EMS and plans.....	131
8.2.1	Sub-plans.....	132
8.3	Operational Environmental Management Plan.....	132

## PART D – ENVIRONMENTAL ASSESSMENT

### 9. Environmental risk analysis

9.1	Approach.....	133
9.2	Key and other environmental issues.....	133

### 10. Hydrology and water management

10.1	Assessment approach.....	137
10.1.1	Macleay River floodplain.....	137
10.1.2	Other areas.....	139
10.2	Flood behaviour.....	139
10.2.1	Changes to flood behaviour.....	139
10.2.2	Impacts of changed flood behaviour on the community.....	149
10.3	Surface water flows.....	150
10.3.1	Changes to surface water flows.....	150
10.3.2	Impacts of changes to surface water flows.....	152
10.4	Groundwater.....	153
10.5	Management of impacts.....	153
10.5.1	Building protection.....	153
10.5.2	Stock refuge.....	154
10.5.3	Floodway control devices in Frederickton.....	155
10.5.4	Flood gauges.....	155
10.5.5	Scour protection and energy dissipation.....	155
10.5.6	Summary of management measures.....	155

## 11. Biodiversity

11.1	Assessment approach.....	157
11.2	Study area context.....	157
11.2.1	Landscape context.....	157
11.2.2	Vegetation communities.....	158
11.2.3	Terrestrial Fauna habitats.....	159
11.2.4	Terrestrial flora.....	168
11.2.5	Terrestrial fauna.....	168
11.2.6	Aquatic flora and fauna.....	176
11.3	Impacts on biodiversity.....	176
11.3.1	Loss of native vegetation.....	176
11.3.2	Loss of threatened species of plant.....	177
11.3.3	Loss of fauna habitat.....	177
11.3.4	Habitat fragmentation and barrier effects.....	178
11.3.5	Edge effects.....	178
11.3.6	Mortality.....	179
11.3.7	Weeds.....	179
11.3.8	Changed hydrology.....	180
11.3.9	Aquatic disturbance and fish passage.....	180
11.3.10	Commercial and recreational fishing.....	181
11.3.11	Cumulative impacts.....	181
11.4	Management of impacts.....	181
11.4.1	Vegetation and habitat loss.....	182
11.4.2	Fragmentation, terrestrial barrier effects and road mortality.....	183
11.4.3	Changed hydrology.....	184
11.4.4	Aquatic disturbance.....	184
11.4.5	Acid sulfate soils.....	186
11.4.6	Compensatory habitat.....	186
11.4.7	Summary of management measures.....	186
11.5	Significance of impacts.....	188
11.6	Implications for ecologically sustainable development.....	190
11.6.1	Precautionary principle.....	190
11.6.2	Intergenerational equity.....	190
11.6.3	Conservation of biological diversity.....	190
11.6.4	Improved valuation and pricing of environmental resources.....	190

## 12. Geology and soils

12.1	Assessment approach.....	191
12.2	Overview of existing geology and soils.....	191
12.2.1	Topography.....	191
12.2.2	Geology and soils.....	194
12.3	Impact of changes to surface and subsurface conditions.....	194
12.3.1	Soft soils.....	194
12.3.2	Cut slope areas.....	196
12.3.3	Contaminated land.....	196
12.3.4	Acid sulfate soils.....	197
12.3.5	Erosion.....	197
12.4	Management of impacts.....	199
12.4.1	Soft soils.....	199
12.4.2	Cut slopes.....	200
12.4.3	Contaminated land.....	200
12.4.4	Acid sulfate soils.....	201
12.4.5	Erosion.....	201
12.4.6	Summary of management measures.....	201

### 13. Hazard and risk

13.1	Assessment approach.....	203
13.2	Construction hazards and risks.....	203
13.2.1	Environmental and occupational health and safety hazards .....	203
13.2.2	Hazardous materials transport .....	203
13.2.3	Hazardous materials handling and storage.....	204
13.3	Operational hazards and risks.....	205
13.3.1	Health and safety hazards.....	206
13.3.2	Environmental hazards .....	207
13.4	Management of impacts .....	208
13.4.1	Construction hazards and risks.....	208
13.4.2	Operational hazards and risks.....	209
13.4.3	Emergency services .....	209
13.4.4	Summary of management measures.....	210

### 14. Traffic, transportation and access

14.1	Assessment approach.....	211
14.2	Key existing local and regional characteristics .....	211
14.2.1	Road and pedestrian networks .....	211
14.2.2	Existing traffic volumes and patterns.....	214
14.2.3	Current network capacity .....	216
14.2.4	Safety.....	216
14.3	Changes to traffic conditions during construction .....	219
14.4	Impact of future traffic growth on the existing network.....	219
14.5	Changes to the road network with the proposed upgrade .....	220
14.5.1	Road hierarchy.....	220
14.5.2	Impact on operational performance .....	220
14.5.3	Changes to local road and private property access.....	225
14.6	Improvements to freight efficiency.....	233
14.7	Provision for cyclist and pedestrian access .....	233
14.8	Provision for public transport.....	233
14.9	Management of impacts .....	234
14.9.1	Summary of management measures.....	234

### 15. Land use and property

15.1	Assessment approach.....	235
15.2	Existing land use .....	235
15.2.1	Macleay Valley .....	235
15.2.2	Precincts .....	236
15.3	Changes to land use and property.....	238
15.3.1	Regional land use and development .....	238
15.3.2	South Kempsey.....	238
15.3.3	Crescent Head Road and Inches Road .....	239
15.3.4	Frogmore .....	240
15.3.5	Frederickton .....	240
15.3.6	Collombatti.....	241
15.4	Summary of land use impacts.....	244
15.4.1	Land use patterns.....	244
15.4.2	Property acquisition.....	244
15.4.3	Agriculture.....	276
15.4.4	Commercial .....	279
15.4.5	Quarry operations.....	279
15.4.6	Private property access.....	279
15.5	Management of impacts .....	280
15.5.1	Summary of management measures.....	280



## 16. Noise and vibration

16.1	Assessment approach .....	281
16.2	Existing noise environment.....	281
16.3	Assessment criteria and methodology.....	288
16.3.1	Construction noise and vibration .....	288
16.3.2	Operational traffic noise .....	290
16.4	Changes to the acoustic environment.....	292
16.4.1	Construction noise and vibration.....	292
16.4.2	Operational noise .....	294
16.4.3	Other sensitive receivers.....	297
16.5	Management of impacts .....	310
16.5.1	Noise mitigation options.....	310
16.5.2	Summary of management measures.....	313

## 17. Heritage

17.1	Assessment approach .....	315
17.1.1	Literature and database review.....	315
17.1.2	Consultation.....	316
17.1.3	Fieldwork.....	316
17.1.4	Heritage assessment.....	317
17.2	Known items of heritage significance.....	317
17.2.1	Indigenous.....	317
17.2.2	Non-Indigenous.....	318
17.2.3	Natural areas.....	319
17.3	Potential areas of heritage significance.....	319
17.3.1	Potential archaeological deposits .....	319
17.4	Impacts on items of heritage significance .....	319
17.4.1	Indigenous.....	319
17.4.2	Non-Indigenous.....	321
17.5	Management of impacts .....	322
17.5.1	Indigenous heritage .....	322
17.5.2	Non-Indigenous heritage .....	322
17.5.3	Summary of management measures.....	324

## 18. Socio-economic impacts

18.1	Assessment approach .....	325
18.2	Existing social and economic environment.....	325
18.2.1	Regional context.....	325
18.2.2	Local context.....	326
18.3	Impacts on the social and economic environment.....	327
18.3.1	State-wide, regional and local benefits .....	327
18.3.2	Impacts on the local community .....	328
18.3.3	Impacts on the local economy .....	330
18.4	Management of impacts .....	334
18.4.1	Summary of management measures.....	335

## 19. Landscape and visual impacts

19.1	Assessment approach .....	337
19.2	Existing landscape and views.....	338
19.2.1	Landscape character zones.....	338
19.3	Impacts on landscape and views.....	338
19.3.1	Landscape character zones.....	338
19.4	Management of impacts .....	343
19.4.1	Landscape character zones.....	343
19.5	Urban and landscape concept plan.....	343
19.5.1	Summary of management measures.....	352

## 20. Air quality

20.1	Existing air quality and meteorology.....	355
20.2	Construction .....	356
20.3	Operation .....	357
20.4	Summary of management measures .....	361

## 21. Other environmental issues

21.1	Water quality .....	363
21.1.1	Existing water quality.....	363
21.1.2	Construction .....	363
21.1.3	Operation .....	364
21.1.4	Summary of management measures.....	364
21.2.1	Pacific Highway Upgrade Program.....	366
21.2.2	Other major projects.....	367
21.3	Project sustainability.....	368
21.3.1	What is sustainable development?.....	368
21.3.2	Assessment approach.....	369
21.3.3	Greenhouse gases.....	369
21.3.4	Waste, energy and demand on resources.....	374
21.3.5	Summary of management measures.....	377
21.3.6	Compensatory habitat as an offset.....	377

## PART E – JUSTIFICATION AND CONCLUSIONS

### 22. Justification and conclusions

22.1	Justification of the proposed upgrade .....	379
22.1.1	Achievement of project objectives.....	379
22.2	Conclusions.....	380
22.3	Next steps.....	384

## References

## APPENDICES

Appendix A	Director-General's Environmental Assessment requirements
Appendix B	Checklist of key issues to be addressed in the Environmental Assessment
Appendix C	Summary of Issues Raised During Community and Stakeholder Consultation
Appendix D	Draft Statement of Commitments
Appendix E	RTA Land Acquisition Policy
Appendix F	Indicative method for subsurface investigations of potential archaeological deposits
Appendix G	Study Team

# List of figures

## 1. Introduction

Figure 1-1	Pacific Highway Upgrade Program	2
Figure 1-2	Regional and local government context	3
Figure 1-3	The proposed upgrade	4
Figure 1-4	Project development process	6

## 2. Context and need for the proposed upgrade

Figure 2-1	Growth rates by statistical local areas and regions (NSW)	14
Figure 2-2	Local road network and accident zones	18
Figure 2-3	Projected AADT volumes and level of service on the Pacific Highway (north of Frederickton)	21

## 3. Planning and approvals

Figure 3-1	Part 3A approvals process	26
------------	---------------------------	----

## 4. Community and stakeholder involvement

Figure 4-1	Location of community precincts	41
------------	---------------------------------	----

## 5. Approach to route selection and design

Figure 5-1	Route option development and selection	49
Figure 5-2a	Concept design development	54
Figure 5-2b	Concept design development	55
Figure 5-2c	Concept design development	56
Figure 5-2d	Concept design development	57
Figure 5-2e	Concept design development	58
Figure 5-2f	Concept design development	59
Figure 5-2g	Concept design development	60
Figure 5-3	Comparison of preferred route (July 2004) and proposed upgrade	65

## 6. Concept design

Figure 6-1a	Horizontal and vertical route alignment	70
Figure 6-1b	Horizontal and vertical route alignment	71
Figure 6-1c	Horizontal and vertical route alignment	72
Figure 6-1d	Horizontal and vertical route alignment	73
Figure 6-1e	Horizontal and vertical route alignment	74
Figure 6-1f	Horizontal and vertical route alignment	75
Figure 6-1g	Horizontal and vertical route alignment	76
Figure 6-1h	Horizontal and vertical route alignment	77
Figure 6-1i	Horizontal and vertical route alignment	78
Figure 6-1j	Horizontal and vertical route alignment	79
Figure 6-1k	Horizontal and vertical route alignment	80
Figure 6-1l	Horizontal and vertical route alignment	81
Figure 6-1m	Horizontal and vertical route alignment	82
Figure 6-1n	Horizontal and vertical route alignment	83
Figure 6-1o	Horizontal and vertical route alignment	84
Figure 6-1p	Horizontal and vertical route alignment	85
Figure 6-1q	Horizontal and vertical route alignment	86
Figure 6-1r	Horizontal and vertical route alignment	87

Figure 6-1s	Horizontal and vertical route alignment	88
Figure 6-2	Typical cross-sections	89
Figure 6-3	Photo-illustration of the proposed South Kempsey interchange (looking south)	90
Figure 6-4	Perspective drawing of the proposed South Kempsey interchange (looking north)	91
Figure 6-5	Photo-illustration of the proposed upgrade at Frederickton (looking west)	91
Figure 6-6	Photo-illustration of the proposed Stuarts Point Road interchange (looking south)	92
Figure 6-7	Typical bridge cross-sections	95
Figure 6-8	Photo-illustration of the proposed floodplain bridging at Frogmore (looking west)	96
Figure 6-9	Perspective drawing of typical interchange bridge	97
Figure 6-10	Perspective drawing of the proposed Crescent Head Road overpass (looking west)	98
Figure 6-11	Photo-illustration of the proposed upgrade at Collombatti Creek (looking north)	98
Figure 6-12	Typical sections and perspective drawing – Frederickton flood levee	104
Figure 6-13	Example of a sedimentation basin	106
Figure 6-14	Landscape design strategy	110
	110	

## 7. Refinement of the concept design, detailed design and construction of the proposed upgrade

Figure 7-1a	Approximate extent of construction and construction features	114
Figure 7-1b	Approximate extent of construction and construction features	115
Figure 7-1c	Approximate extent of construction and construction features	116
Figure 7-1d	Approximate extent of construction and construction features	117
Figure 7-1e	Approximate extent of construction and construction features	118
Figure 7-1f	Approximate extent of construction and construction features	119

## 8. Environmental management

No figures in this chapter

## 9. Environmental risk analysis

No figures in this chapter

## 10. Hydrology and water management

Figure 10-1	Hydrological features and extent of flood modelling	138
Figure 10-2	Location of modelled flood points	140
Figure 10-3	Change in peak flood levels as a result of the proposed upgrade	142
Figure 10-4a	Change in period of inundation and rate of rise – March 2001	144
Figure 10-4b	Change in period of inundation and rate of rise – 100-year ARI	145
Figure 10-5	Change in flow velocities as a result of the proposed upgrade	147
Figure 10-6	Collombatti Creek flow paths and proposed bridging	148
Figure 10-7	Location of refuge areas and emergency evacuation routes during floods	151

## 11. Biodiversity

Figure 11-1a	Vegetation communities within the study area	160
Figure 11-1b	Vegetation communities within the study area	161
Figure 11-1c	Vegetation communities within the study area	162
Figure 11-1d	Vegetation communities within the study area	163
Figure 11-1e	Vegetation communities within the study area	164
Figure 11-1f	Vegetation communities within the study area	165
Figure 11-2	Fauna habitats within the study area	166
Figure 11-3	Key habitats and corridors within the study area	167
Figure 11-4a	Location of significant plants and threatened animal species within the study area	170

Figure 11-4b	Location of significant plants and threatened animal species within the study area	171
Figure 11-4c	Location of significant plants and threatened animal species within the study area	172
Figure 11-4d	Location of significant plants and threatened animal species within the study area	173
Figure 11-4e	Location of significant plants and threatened animal species within the study area	174
Figure 11-4f	Location of significant plants and threatened animal species within the study area	175
Figure 11-5	Proposed fauna crossing points	185

## 12. Geology and soils

Figure 12-1a	Geological characteristics of the proposed upgrade	192
Figure 12-1b	Geological characteristics of the proposed upgrade	193
Figure 12-2	Acid sulfate soil risk map	198

## 13. Hazard and risk

No figures in this chapter

## 14. Traffic, transportation and access

Figure 14-1	Existing road network	212
Figure 14-2	Accident numbers and severity (1996-2005)	217
Figure 14-3	Existing road network capacity – 2011 and 2031	218
Figure 14-4	Projected traffic volumes and level of service on the Pacific Highway (north of Frederickton)	220
Figure 14-5	Daily traffic volumes – 2011 and 2031 (with or without the proposed upgrade)	221
Figure 14-6a	Changes to the local road network and property access	227
Figure 14-6b	Changes to the local road network and property access	228
Figure 14-6c	Changes to the local road network and property access	229
Figure 14-6d	Changes to the local road network and property access	230
Figure 14-6e	Changes to the local road network and property access	231
Figure 14-6f	Changes to the local road network and property access	232

## 15. Land use and property

Figure 15-1	Generalised land use surrounding the proposed upgrade	237
Figure 15-2	Example of change to stock evacuation route and local access	242
Figure 15-3	Perspective drawing of proposed Mill Lane overpass (looking east)	243
Figure 15-4a	Property affected by acquisition	246
Figure 15-4b	Property affected by acquisition	247
Figure 15-4c	Property affected by acquisition	248
Figure 15-4d	Property affected by acquisition	249
Figure 15-4e	Property affected by acquisition	250
Figure 15-4f	Property affected by acquisition	251

## 16. Noise and vibration

Figure 16-1a	Noise catchment areas and location of noise monitoring	282
Figure 16-1b	Noise catchment areas and location of noise monitoring	283
Figure 16-1c	Noise catchment areas and location of noise monitoring	284
Figure 16-1d	Noise catchment areas and location of noise monitoring	285
Figure 16-1e	Noise catchment areas and location of noise monitoring	286
Figure 16-1f	Noise catchment areas and location of noise monitoring	287
Figure 16-2	2011 and 2021 daytime noise impacts – South Kempsey and Crescent Head Road	298
Figure 16-3	2011 and 2021 night-time noise impacts – South Kempsey and Crescent Head Road	299
Figure 16-4	2011 and 2021 daytime noise impacts –Inches Road and Frogmore	300

Figure 16-5	2011 and 2021 night-time noise impacts – Inches Road and Frogmore	301
Figure 16-6	2011 and 2021 daytime noise impacts – Frederickton and Collombatti South	302
Figure 16-7	2011 and 2021 night-time noise impacts – Frederickton and Collombatti South	303
Figure 16-8	2011 and 2021 daytime noise impacts – Collombatti North	304
Figure 16-9	2011 and 2021 night-time noise impacts – Collombatti North	305
Figure 16-10	2011 and 2021 daytime noise impacts – Barraganyatti	306
Figure 16-11	2011 and 2021 night-time noise impacts – Barraganyatti	307
Figure 16-12	2011 and 2021 daytime noise impacts – Barraganyatti and Eungai Rail	308
Figure 16-13	2011 and 2021 night-time noise impacts – Barraganyatti and Eungai Rail	309
Figure 16-14	Indicative design of typical noise barriers	311
Figure 16-15	Indicative location of noise barriers	312

## 17. Heritage

Figure 17-1	Location and significance of non-indigenous heritage items	320
-------------	--	-----

## 18. Socio-economic impacts

No figures in this chapter

## 19. Landscape and visual impacts

Figure 19-1	Landscape character zones and visual impacts	339
Figure 19-2	Visual catchment of the proposed upgrade	340
Figure 19-3a	Landscape concept design	344
Figure 19-3b	Landscape concept design	345
Figure 19-3c	Landscape concept design	346
Figure 19-3d	Landscape concept design	347
Figure 19-3e	Landscape concept design	348
Figure 19-3f	Landscape concept design	349
Figure 19-4	Perspective drawing of Frederickton levee from Macleay River Hotel	350
Figure 19-5	Perspective drawing of Crescent Head Road overpass and landscape concept	351
Figure 19-6	Landscape concept plan – sections	352

## 20. Air quality

No figures in this chapter

## 21. Other environmental issues

No figures in this chapter

## 22. Justification and conclusions

No figures in this chapter

# List of tables

## 1. Introduction

Table 1-1	Structure and content of this Environmental Assessment	9
-----------	--	---

## 2. Context and need for the proposed upgrade

Table 2-1	AADT (in axle pairs) on the Pacific Highway, 1986 to 2004	19
Table 2-2	Objectives to address identified needs	23

## 3. Planning and approvals

Table 3-1	Summary of potential approval requirements under NSW legislation	29
Table 3-2	Environmental planning instruments	30

## 4. Community and stakeholder involvement

Table 4-1	Summary of community and stakeholder consultation activities	34
Table 4-2	Key issues raised by the community during the concept design and environmental assessment phase	44

## 5. Approach to route selection and design

Table 5-1	Bridging options assessed	62
Table 5-2	Summary of design responses and refinements	63

## 6. Concept design

Table 6-1	Key features of the Macleay River bridges	93
Table 6-2	Key features of the floodplain bridges	94
Table 6-3	Key features of a typical interchange bridge	96
Table 6-4	Location of interchange bridge structures	97
Table 6-5	Key features of a typical overpass bridge	97
Table 6-6	Location of minor bridge structures	99
Table 6-7	Major service relocations	108

## 7. Refinement of the concept design, detailed design and construction of the proposed upgrade

Table 7-1	Summary of construction components and activities	121
Table 7-2	Potential construction staging	123
Table 7-3	Equipment likely to be used for most construction activities	126
Table 7-4	Sources and volume of water used for construction of the proposed upgrade	127

## 8. Environmental management

No table in this chapter

## 9. Environmental risk analysis

Table 9-1	Summary of environmental risk analysis	134
-----------	--	-----

## 10. Hydrology and water management

Table 10-1	Changes to afflux (Macleay River floodplain) under modelled flood conditions	141
------------	--	-----

## 11. Biodiversity

Table 11-1	Vegetation communities within the study area	158
Table 11-2	Waterways and likelihood of fish habitat	168
Table 11-3	Terrestrial fauna species of conservation significance during survey of the study area	169
Table 11-4	Vegetation communities cleared during construction	176
Table 11-5	Areas of habitat types to be removed and/or disturbed	177
Table 11-6	Likely edge affected vegetation	178
Table 11-7	Noxious weeds recorded in the study area	179

## 12. Geology and soils

No table in this chapter

## 13. Hazard and risk

Table 13-1	Dangerous goods and hazardous materials likely to be used and stored during construction	204
------------	--	-----

## 14. Traffic, transportation and access

Table 14-1	AADT (in axle pairs) on the Pacific Highway at Kempsey, 1986 to 2004	214
Table 14-2	Travel time savings in 2011 and 2031 (weekday morning peak)	222
Table 14-3	Future Pacific Highway two-way peak hour and AADT traffic volumes	223
Table 14-4	Intersection performance	224
Table 14-5	Changes to existing access arrangements	225

## 15. Land use and property

Table 15-1	Properties and land uses directly affected by the proposed upgrade	252
------------	--	-----

## 16. Noise and vibration

Table 16-1	Criteria for road traffic noise	291
Table 16-2	Criteria for road traffic noise at sensitive land uses	291
Table 16-3	Expected noise levels and duration of construction activities	293
Table 16-4	Predicted noise impacts on sensitive receivers (without noise treatment)	295
Table 16-5	Residences potentially exposed to noise levels in excess of criteria for various road surface types	296
Table 16-6	Predicted noise levels at other sensitive receivers (2021)	297

## 17. Heritage

Table 17-1	Previously recorded Indigenous heritage sites in the study area	318
Table 17-2	Sites of non-Indigenous heritage significance	318
Table 17-3	Site specific mitigation measures	323

## 18. Socio-economic impacts

Table 18-1	Perceived benefits resulting from the proposed upgrade	332
Table 18-2	Predicted employment loss	333

## 19. Landscape and visual impacts

No table in this chapter

## 20. Air quality

Table 20-1	Maximum predicted incremental concentrations (2011)	358
Table 20-2	Maximum predicted incremental concentrations (2021)	359



## 21. Other environmental issues

Table 21-1	Major projects in the region	368
Table 21-2	Ongoing greenhouse gas emissions from vehicles using the existing highway and the proposed upgrade	373
Table 21-2	Preliminary habitat compensation strategy	378

## 22. Justification and conclusions

Table 22-1	Performance against project objectives	379
------------	--	-----

### Appendix A Director-General's Environmental Assessment requirements

No table in this chapter

### Appendix B Checklist of key issues to be addressed in the Environmental Assessment

Table B-1	Checklist of key issues to be addressed in the Environmental Assessment	B.1
-----------	---	-----

### Appendix C Summary of Issues Raised During Community and Stakeholder Consultation

Table C-1	Checklist of Department of Environment and Conservation Requirements	C.1
Table C-2	Requirements of Department of Natural Resources	C.4
Table C-3	Requirements of NSW Department of Primary Industries	C.5
Table C-4	Requirements of Kempsey Shire Council	C.6
Table C-5	Requirements of Nambucca Shire Council	C.7
Table C-6	Requirements of the Heritage Council	C.7
Table C-7	Requirements of the Rural Lands Protection Board	C.8
Table C-8	Key issues raised by the community during Route Selection Phase	C.8
Table C-9	Key issues by precinct during Route Selection Phase	C.9
Table C-10	Issues raised by agencies during route selection phase	C.10
Table C-11	Key issues raised by the community during concept design phase	C.12
Table C-12	Key issues raised by the precinct groups during concept design and environmental assessment phase	C.16
Table C-13	Issues raised by agencies during concept design and environmental assessment phase	C.20

### Appendix D Draft Statement of Commitments

Table D-1	Draft Statement of Commitments	D.2
-----------	--------------------------------	-----

### Appendix E RTA Land Acquisition Policy

No table in this chapter

### Appendix F Indicative method for subsurface investigations of potential archaeological deposits

No table in this chapter

### Appendix G Study Team

No table in this chapter