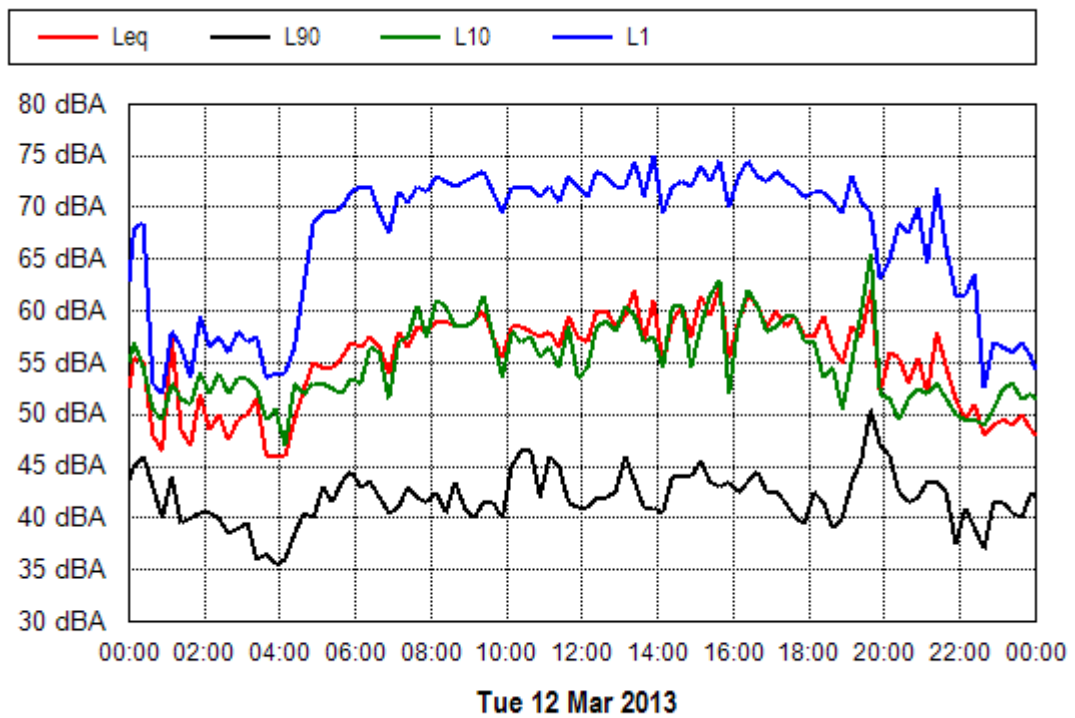
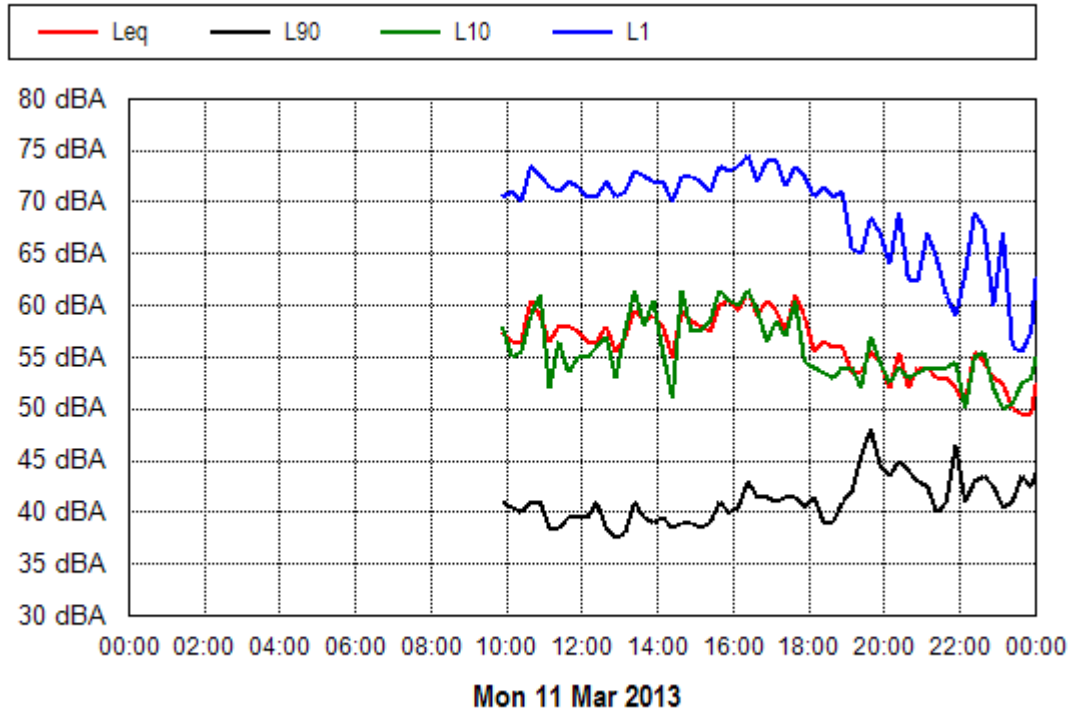
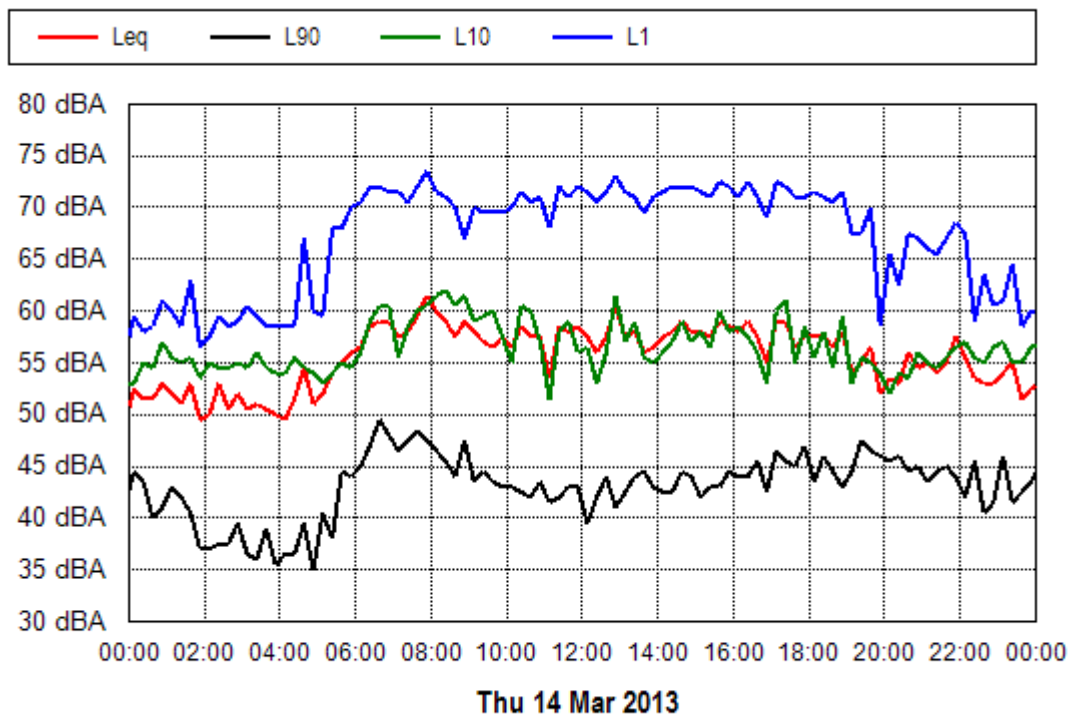
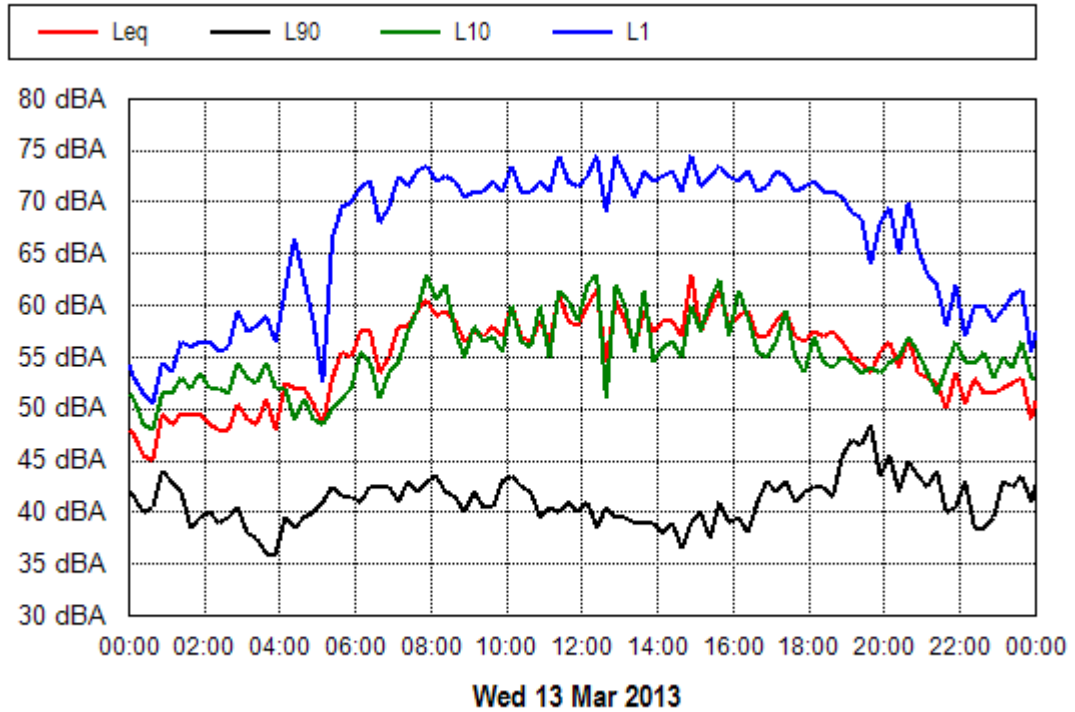


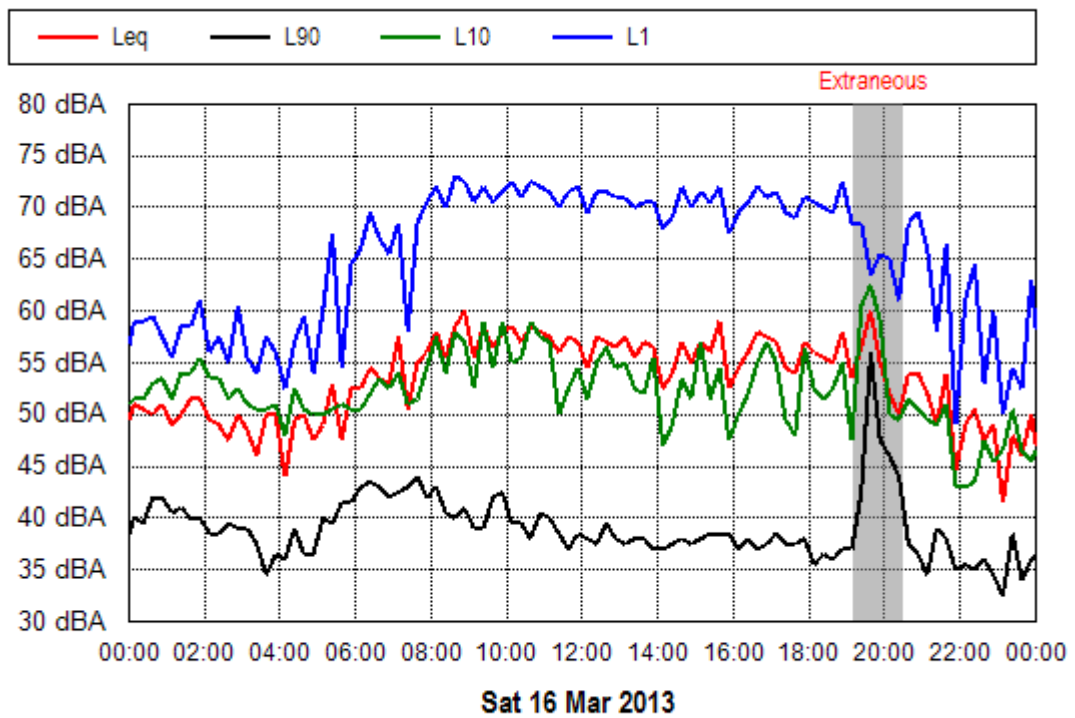
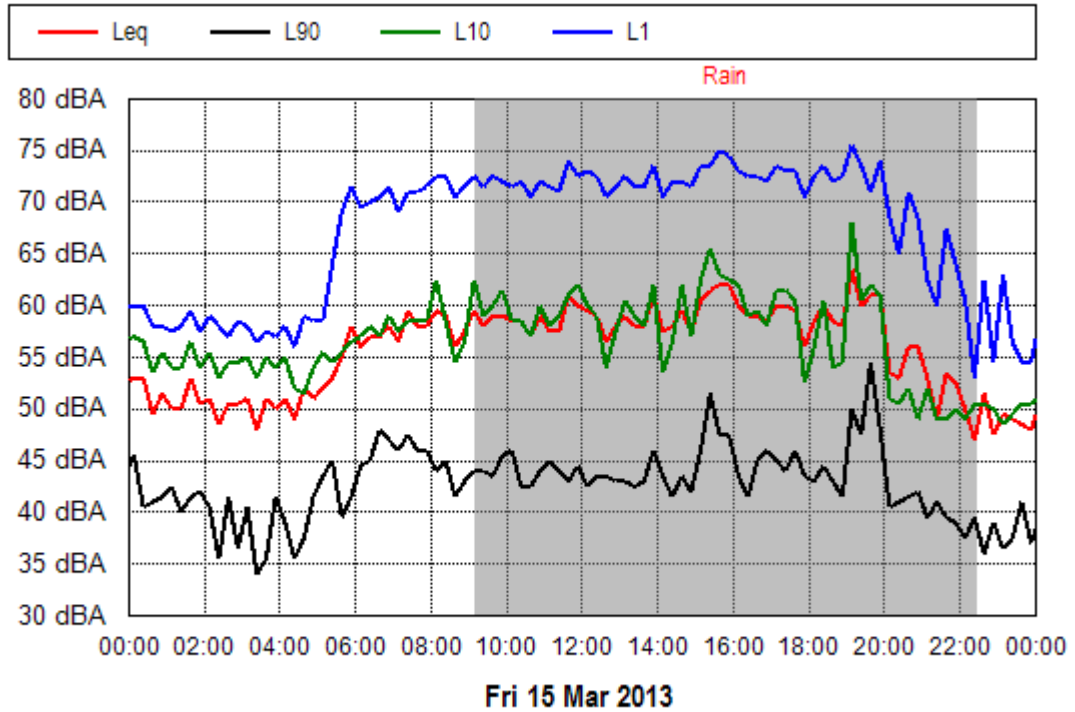
Location: 51 Stuarts Point Rd



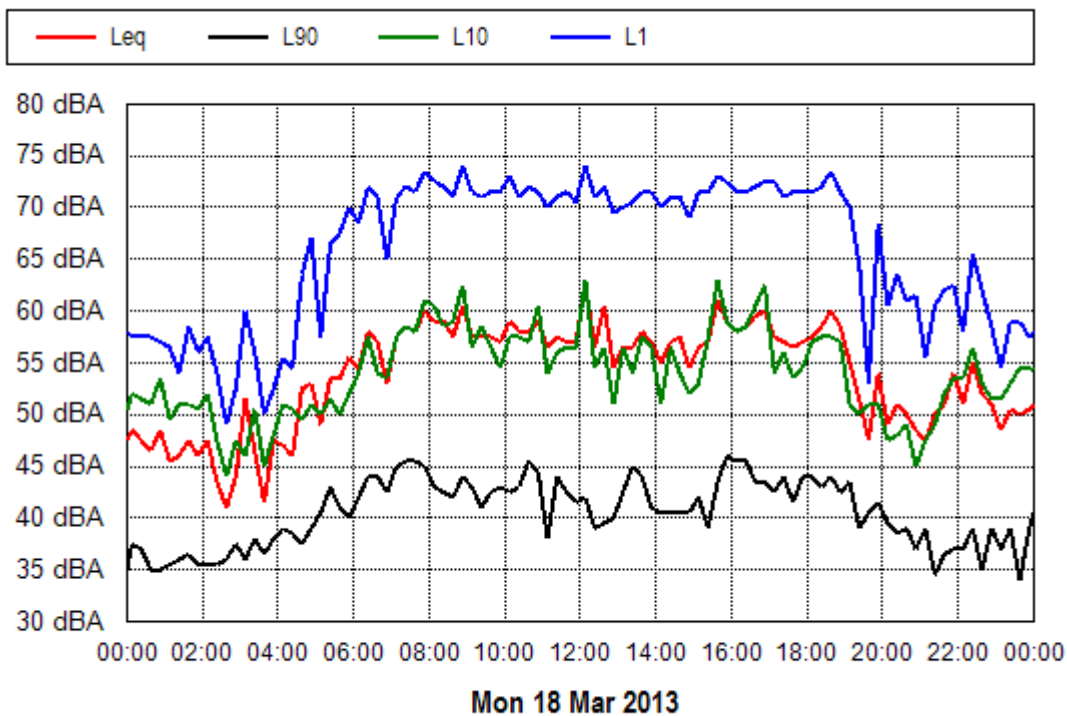
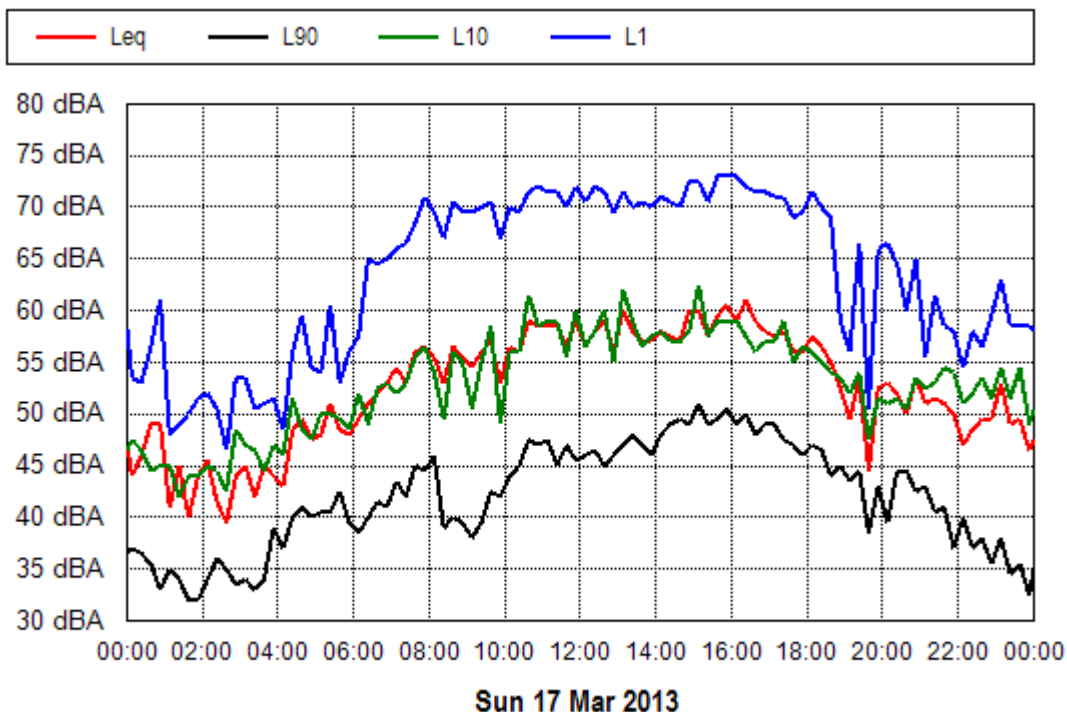
Location: 51 Stuarts Point Rd



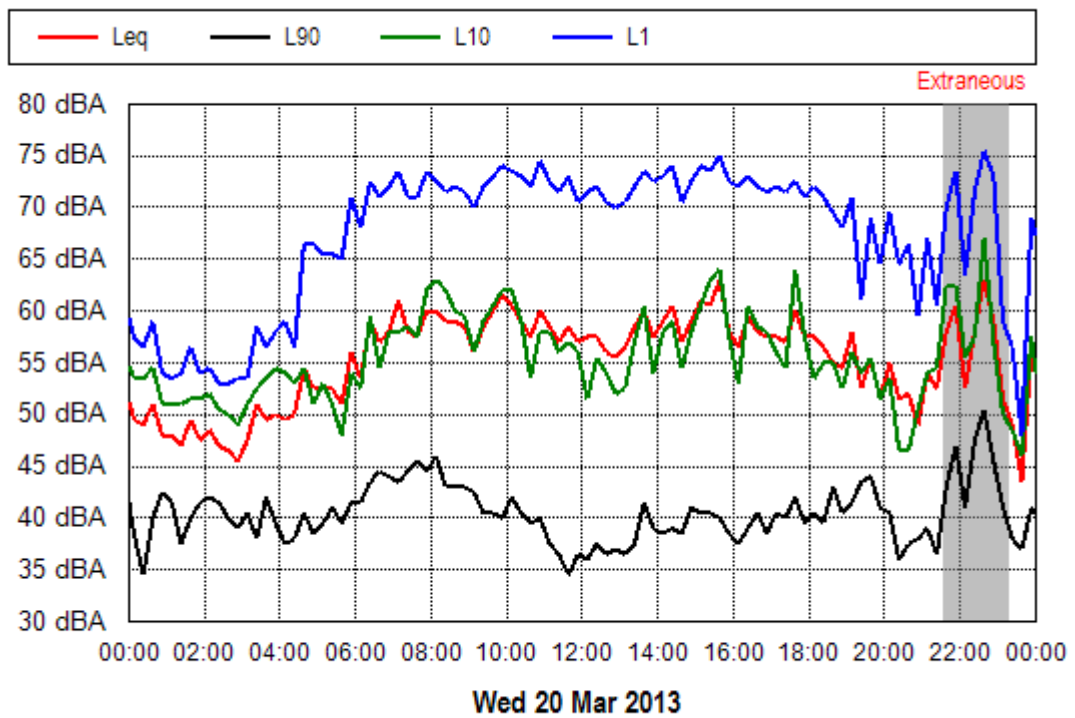
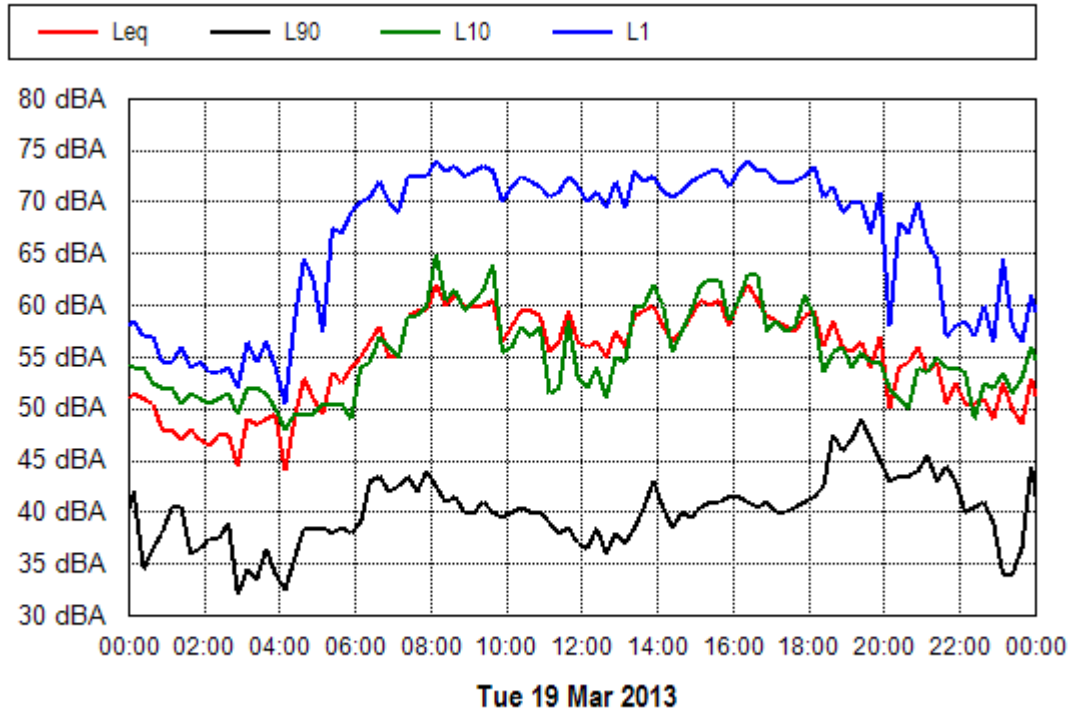
Location: 51 Stuarts Point Rd



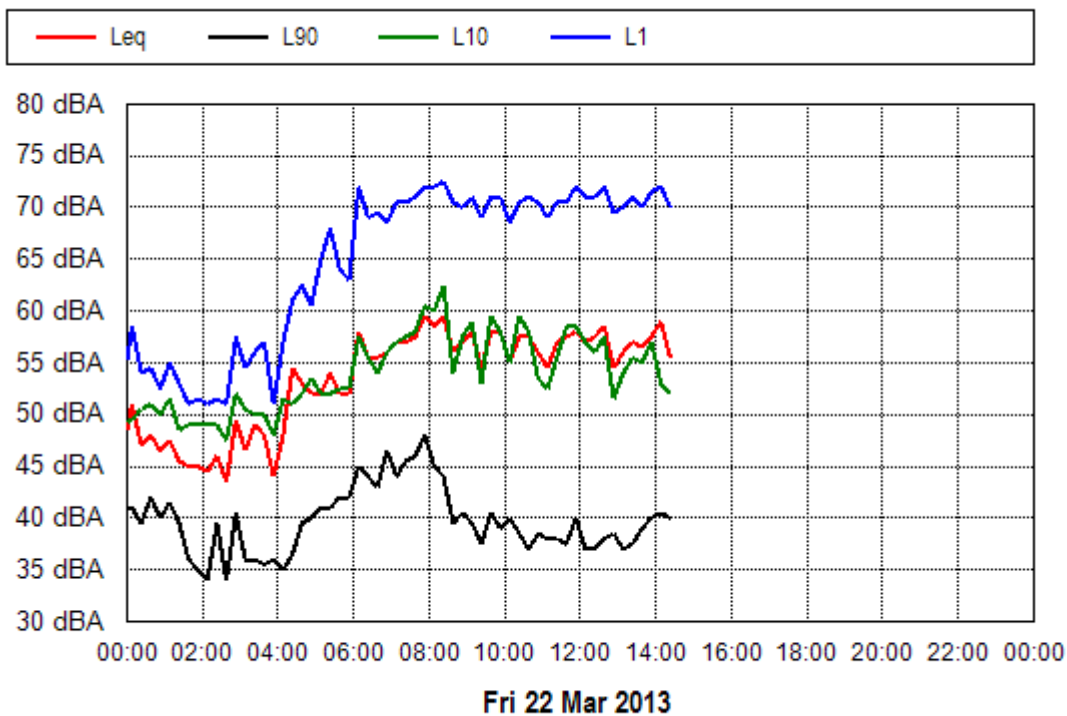
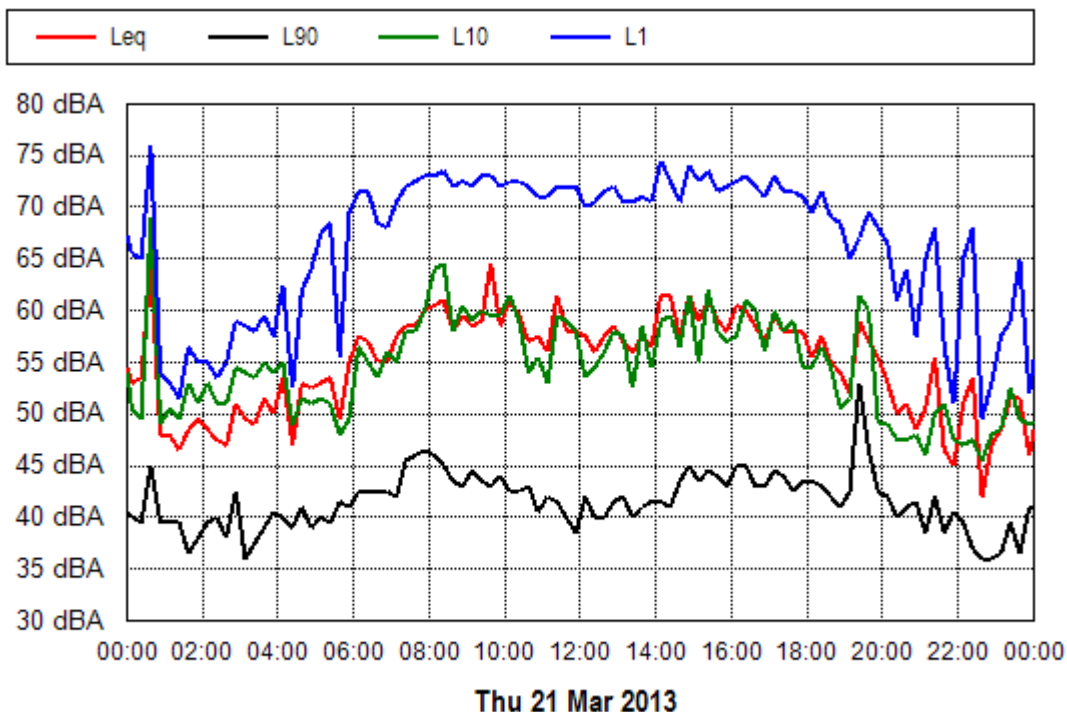
Location: 51 Stuarts Point Rd



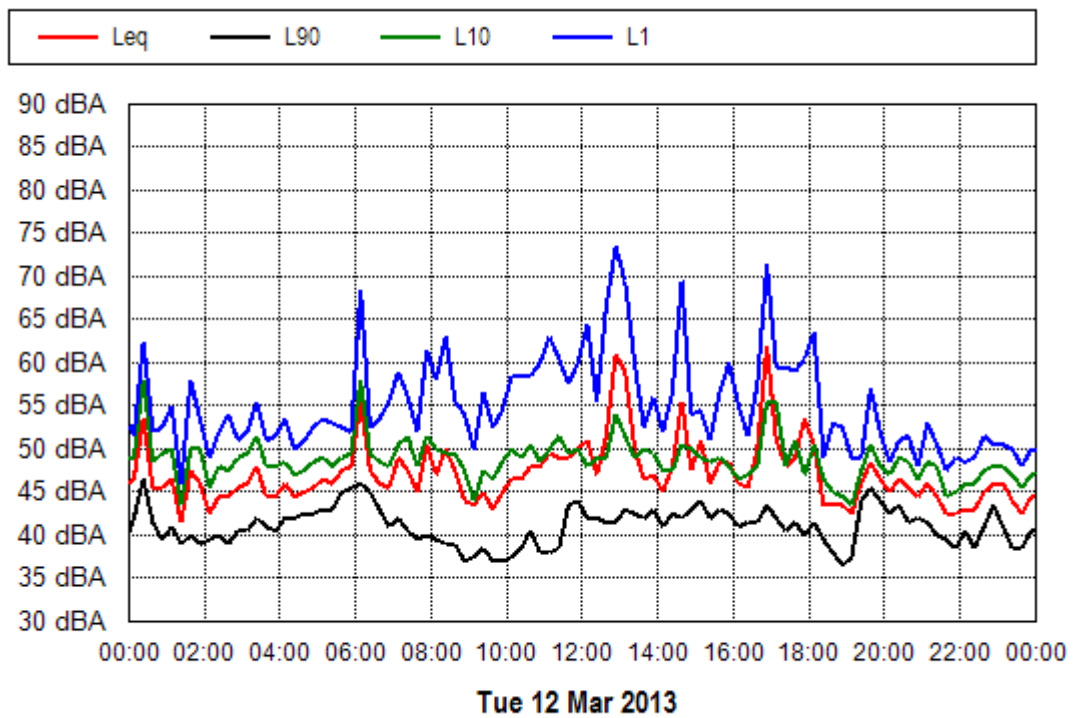
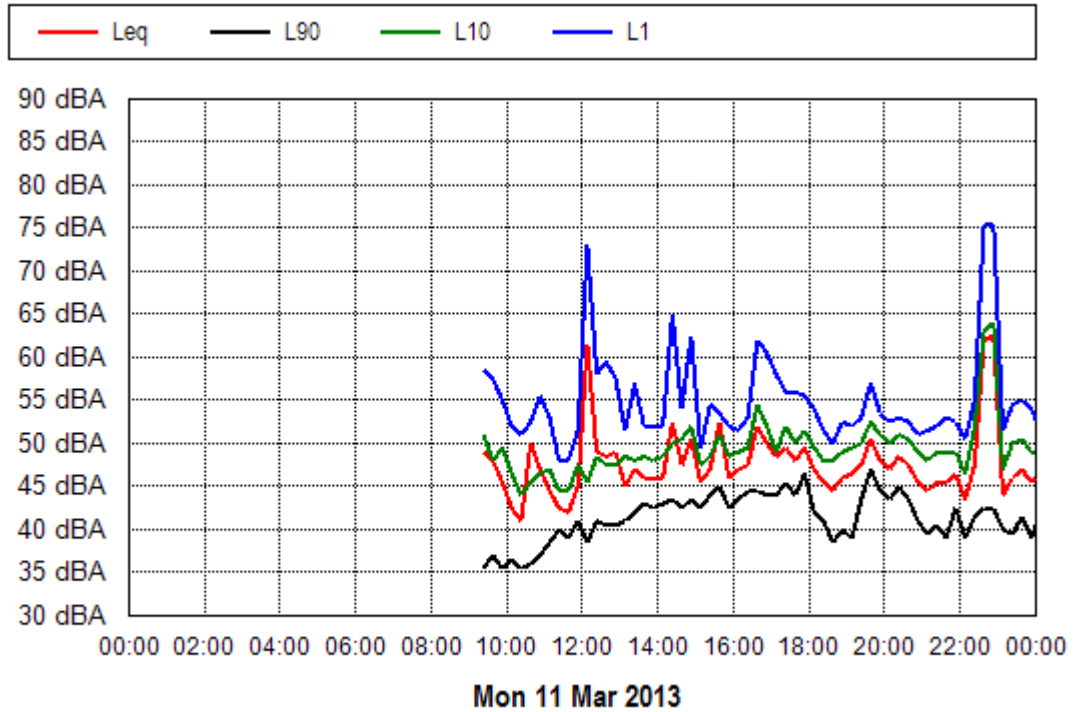
Location: 51 Stuarts Point Rd



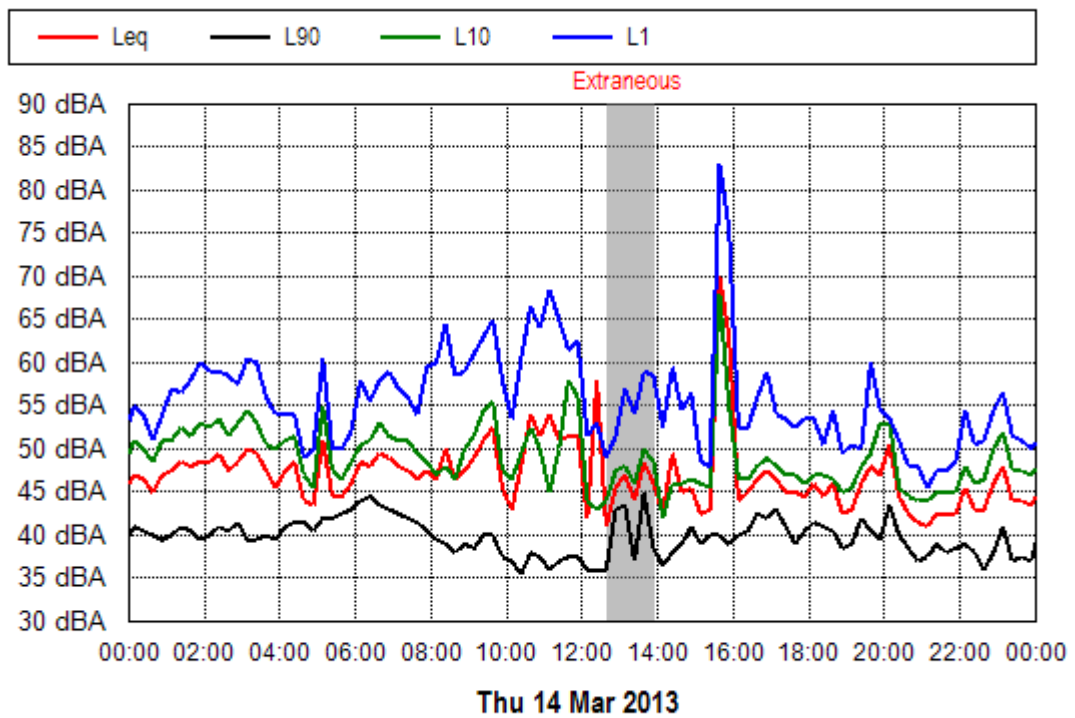
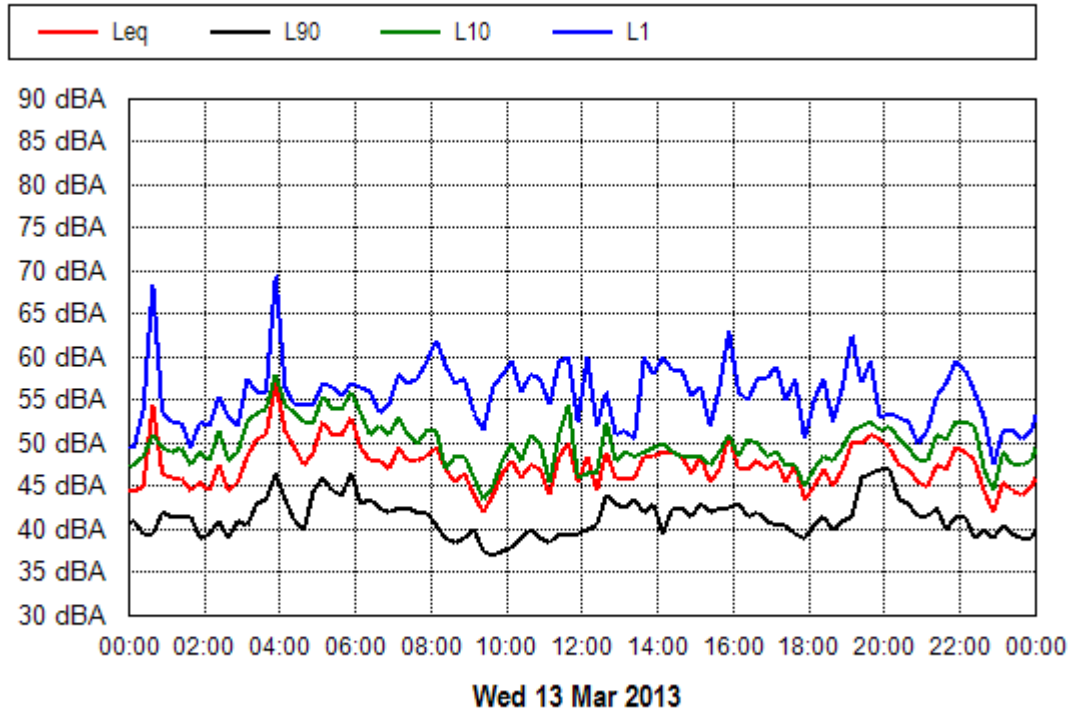
Location: 51 Stuarts Point Rd



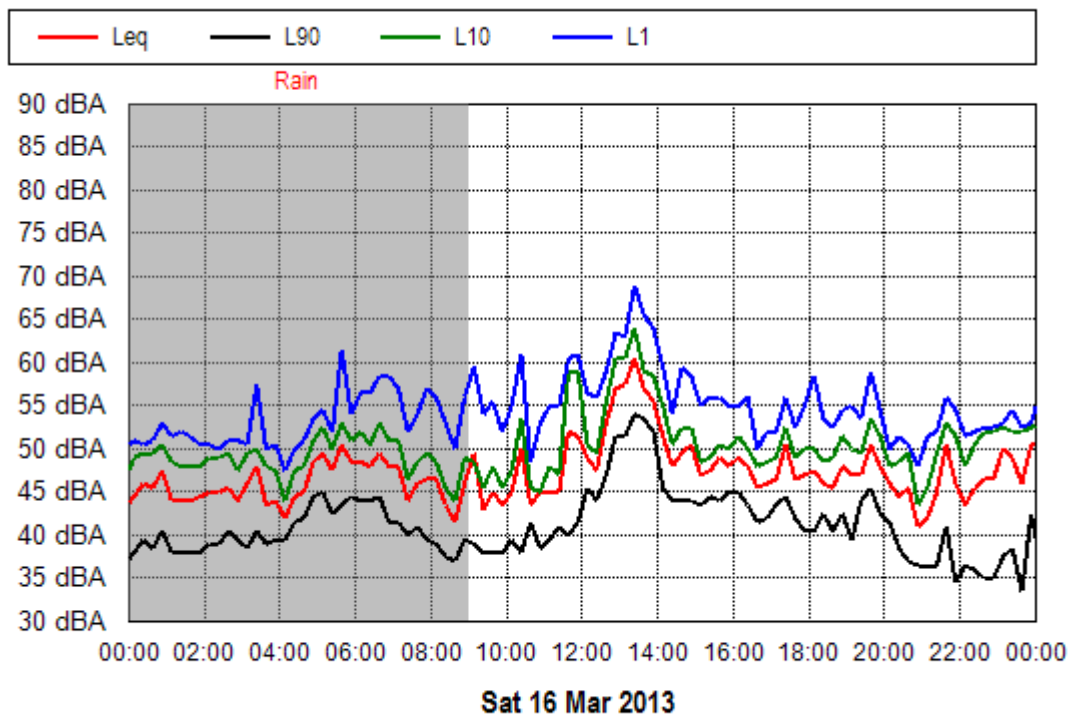
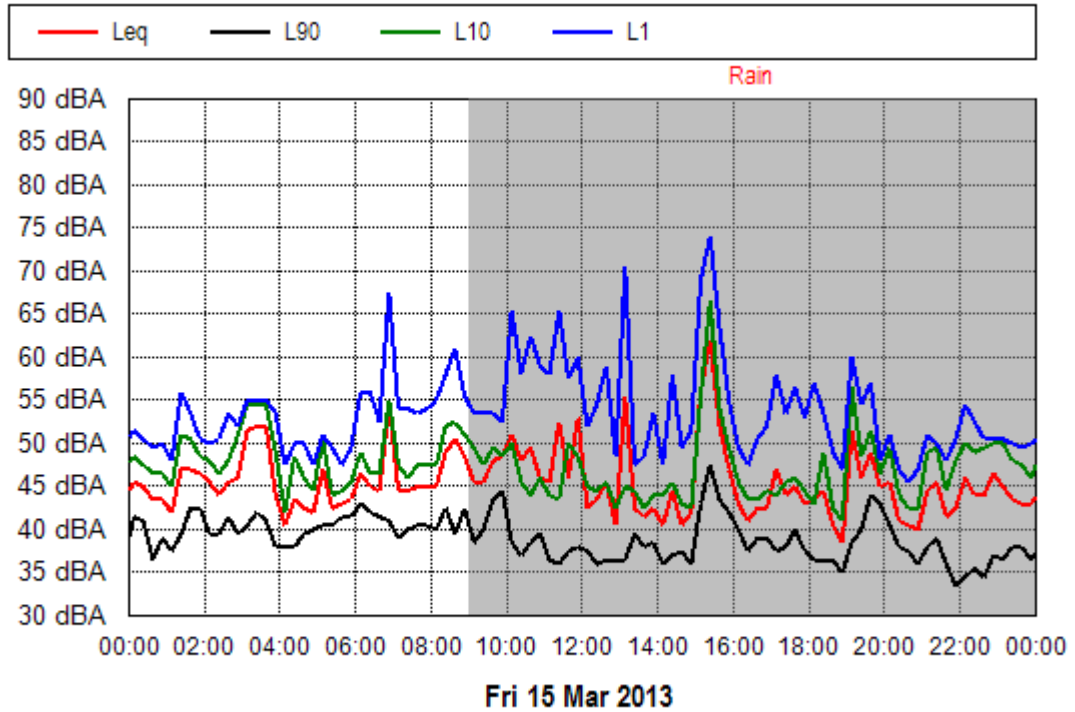
Location: 12 South Bank Rd



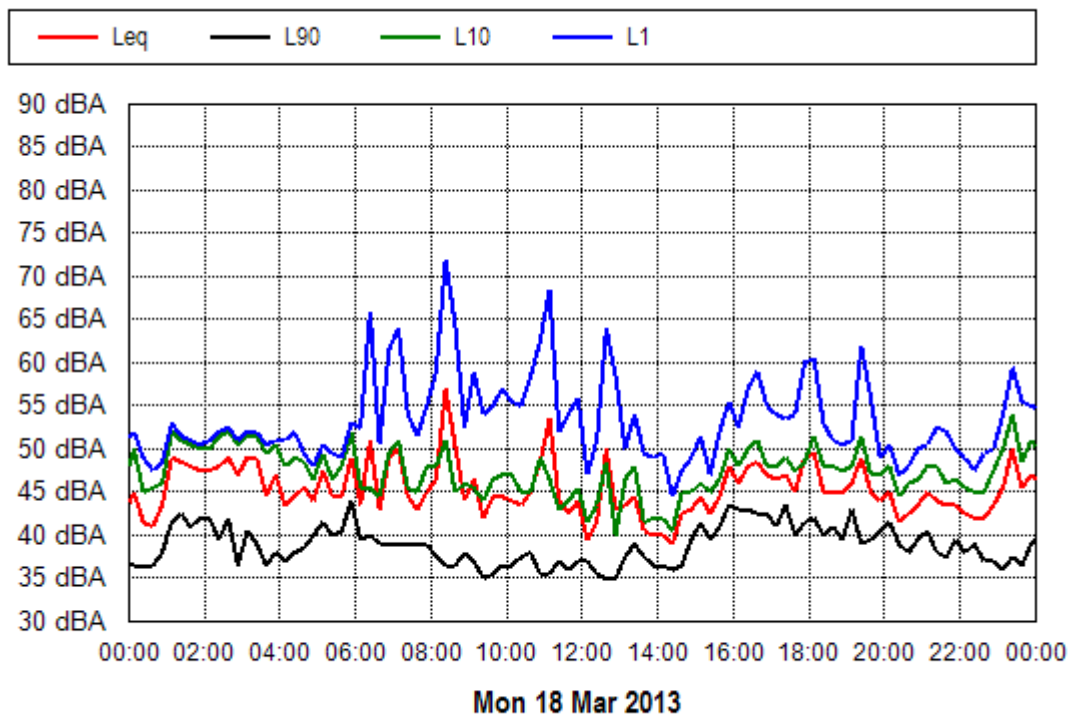
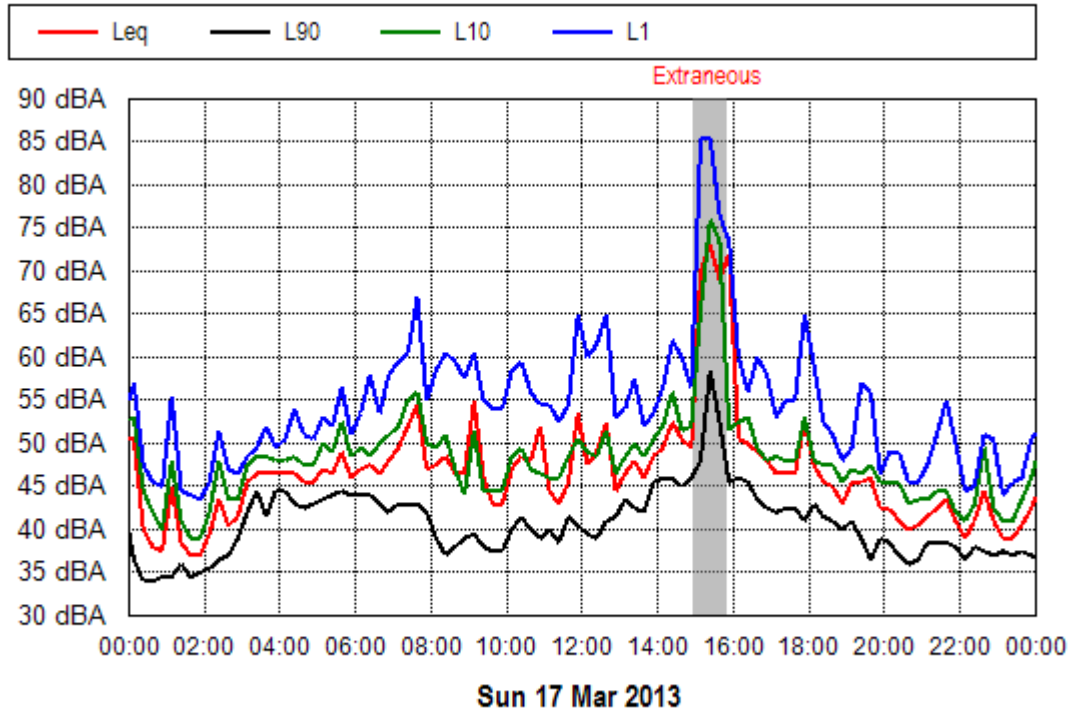
Location: 12 South Bank Rd



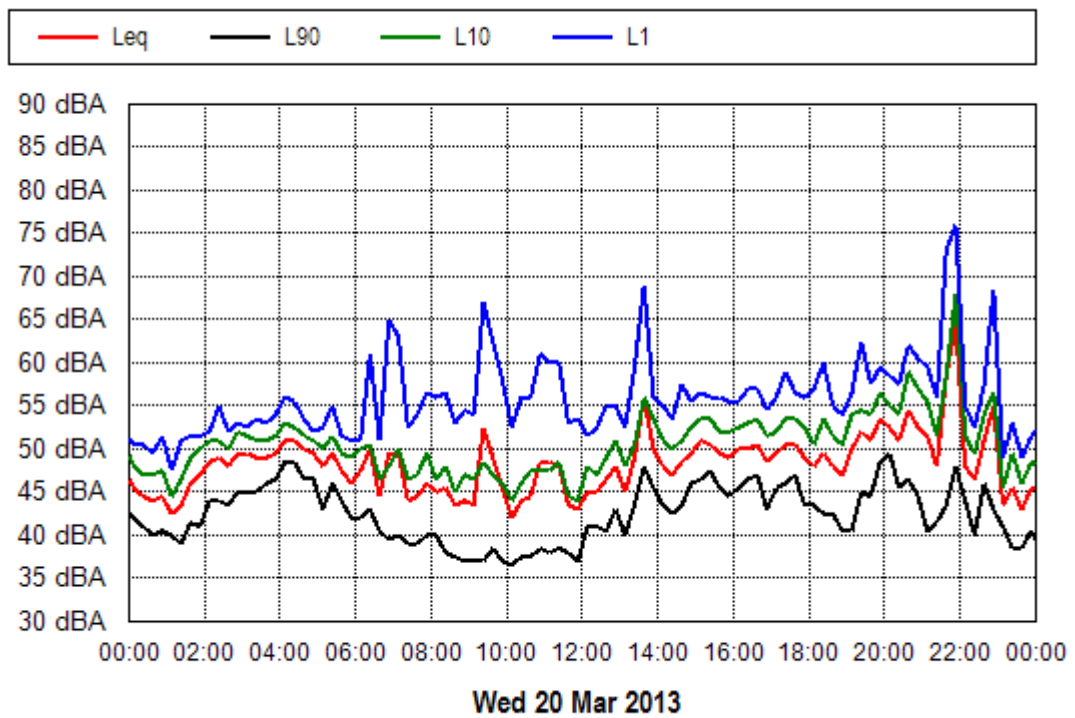
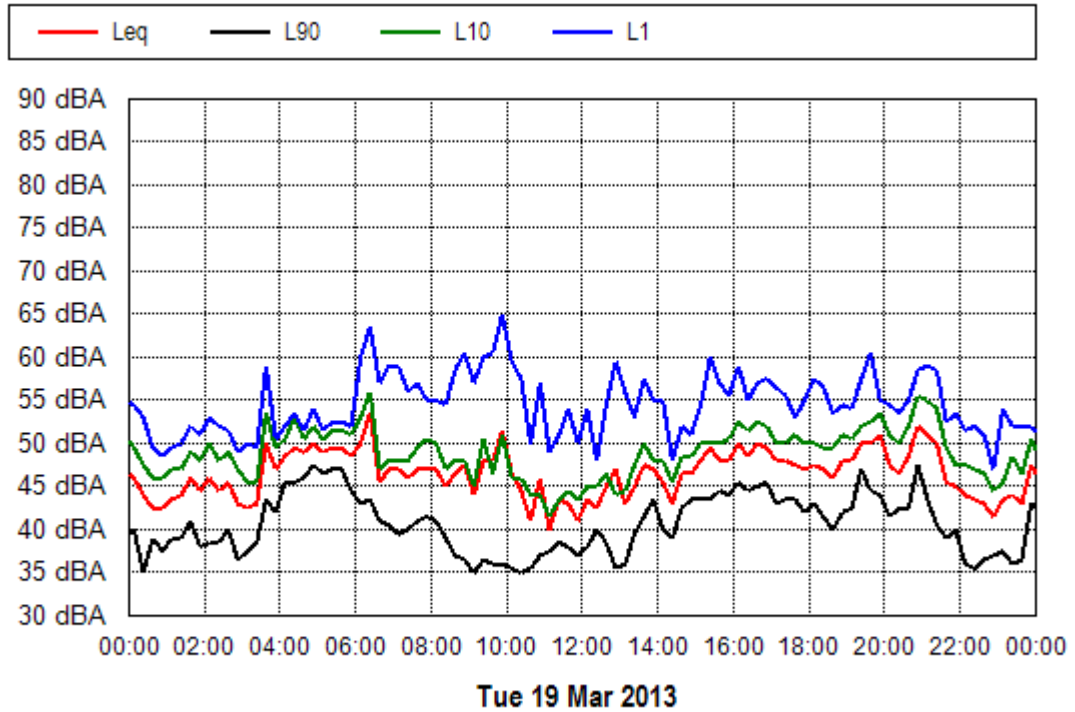
Location: 12 South Bank Rd



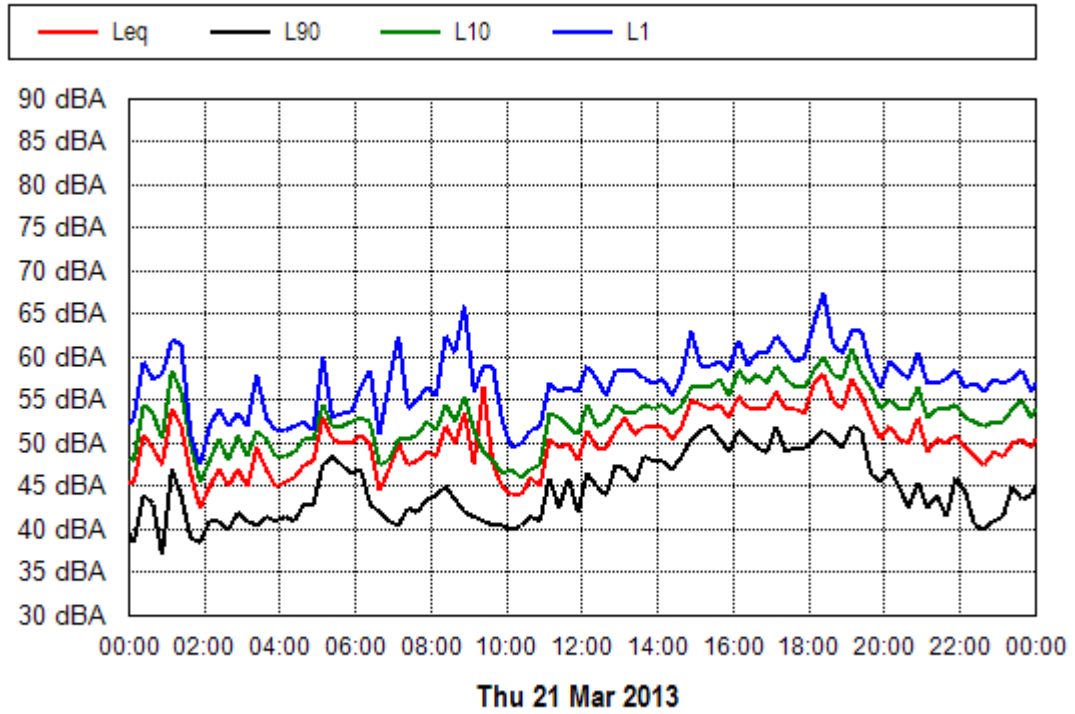
Location: 12 South Bank Rd



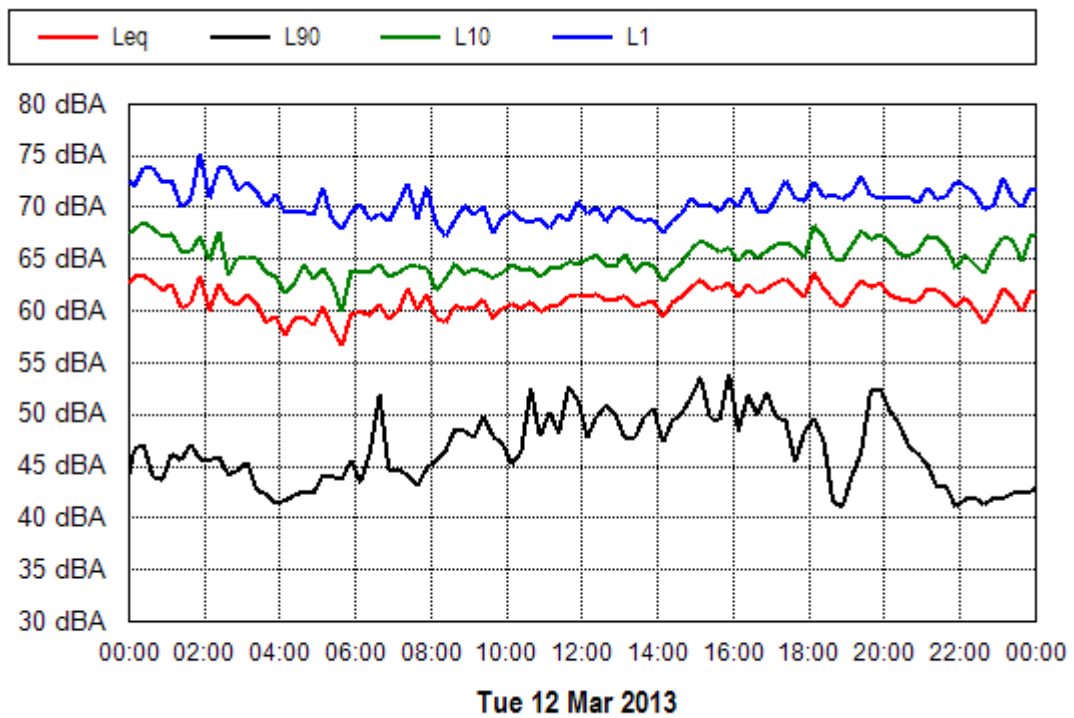
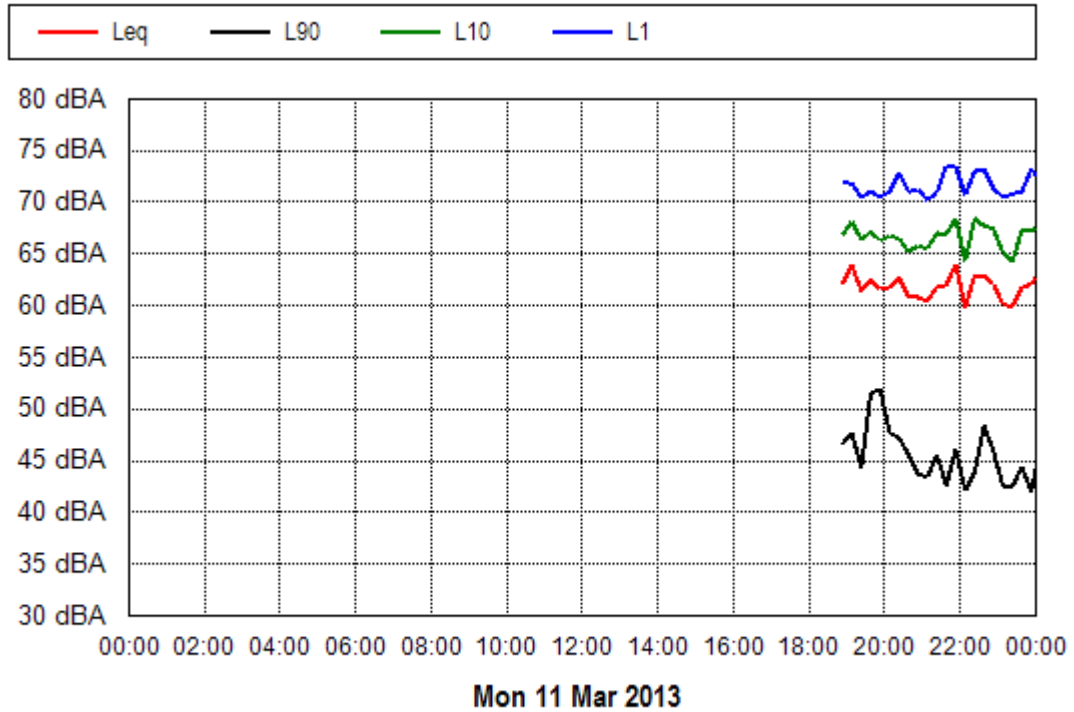
Location: 12 South Bank Rd



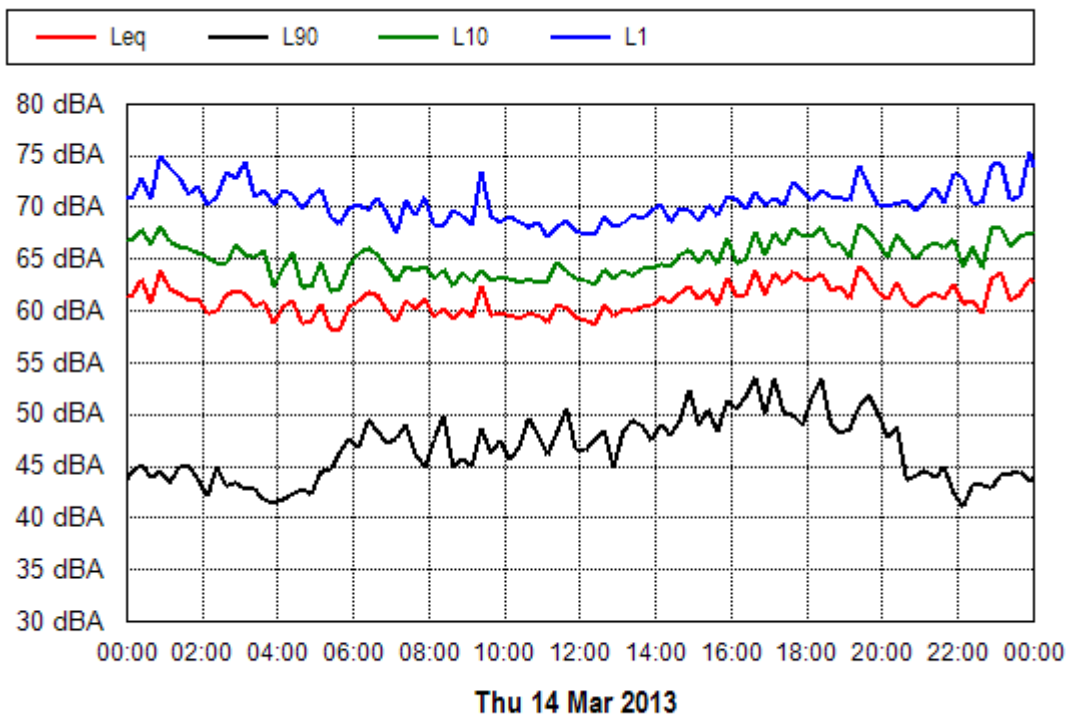
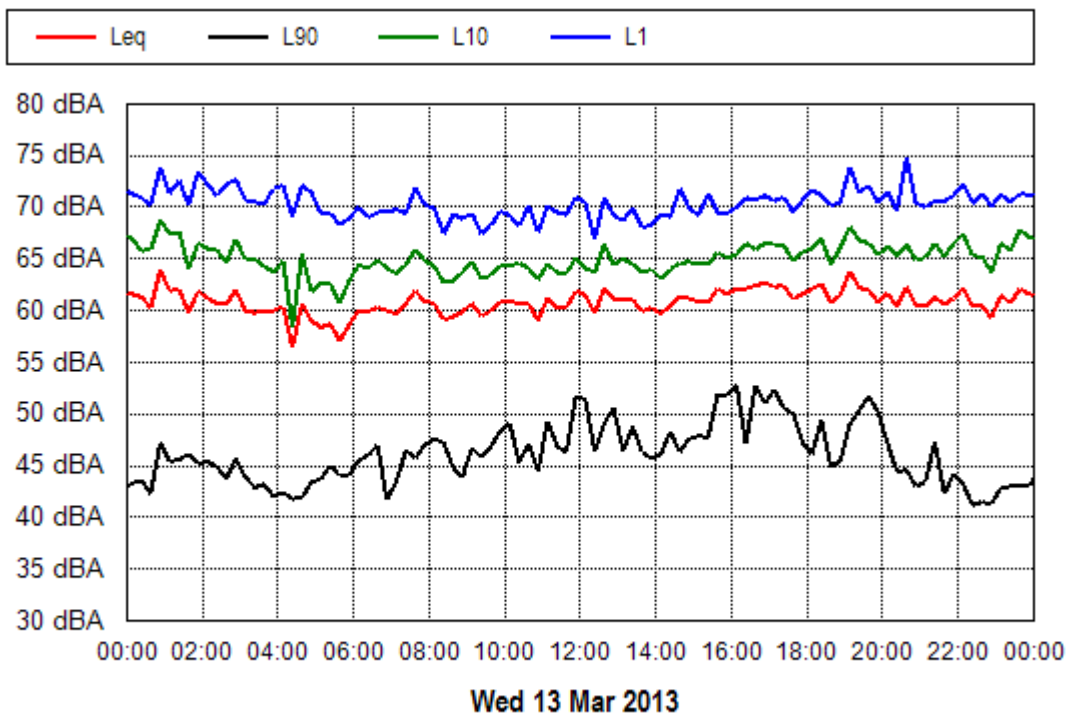
Location: 12 South Bank Rd



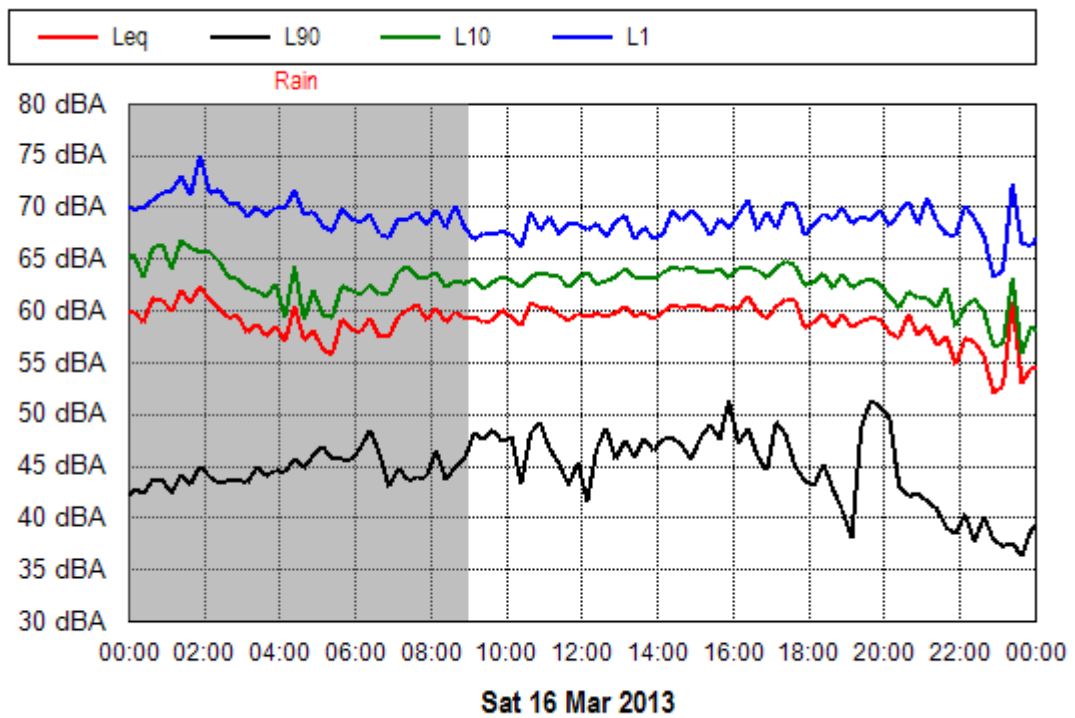
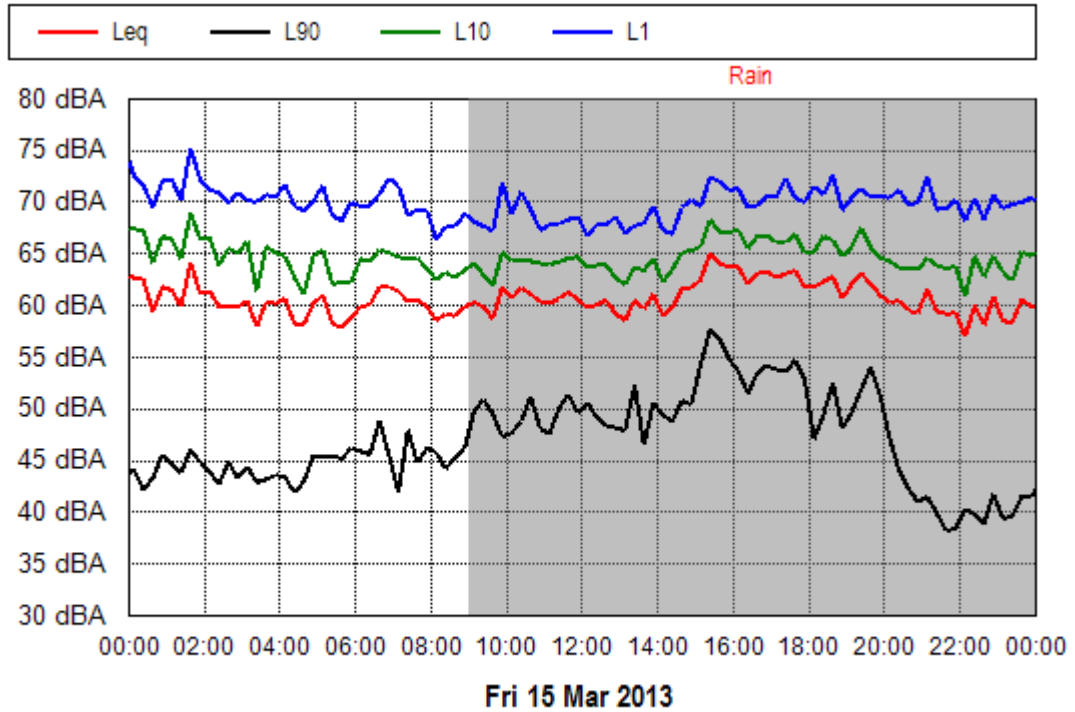
Location: 3349 Pacific Hwy



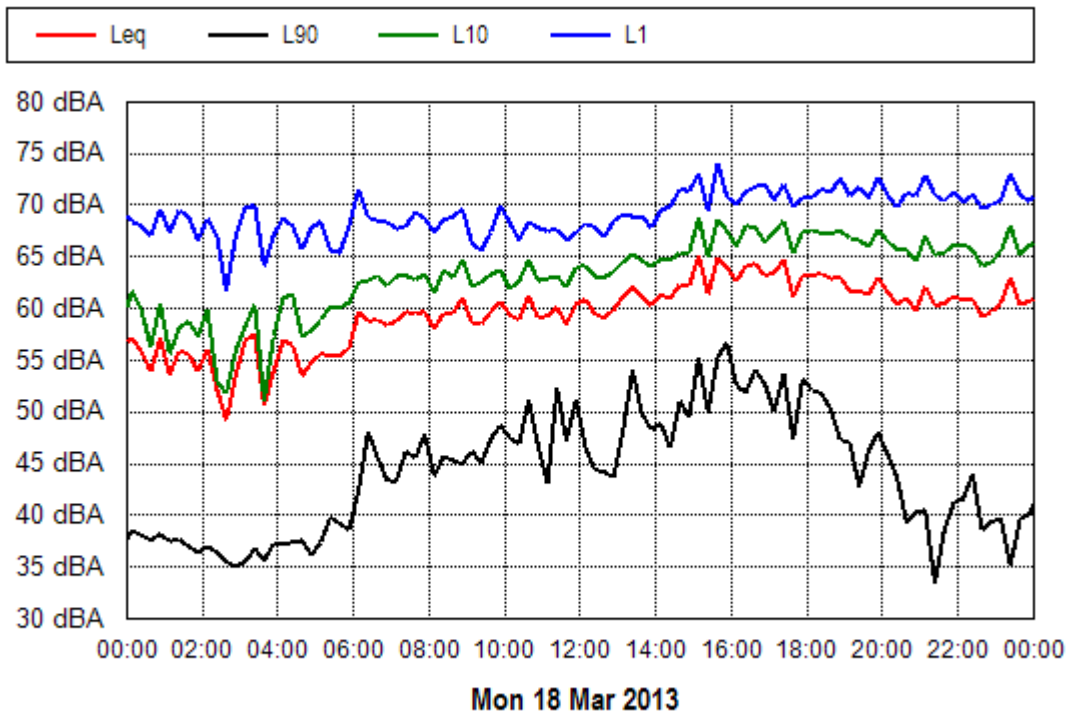
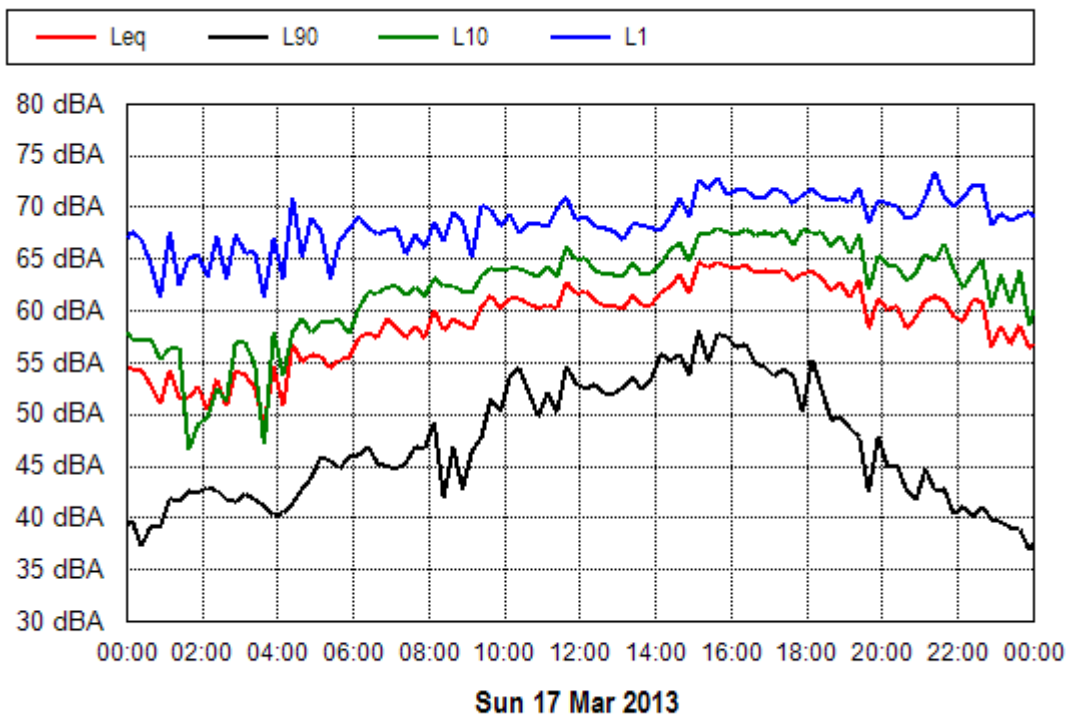
Location: 3349 Pacific Hwy



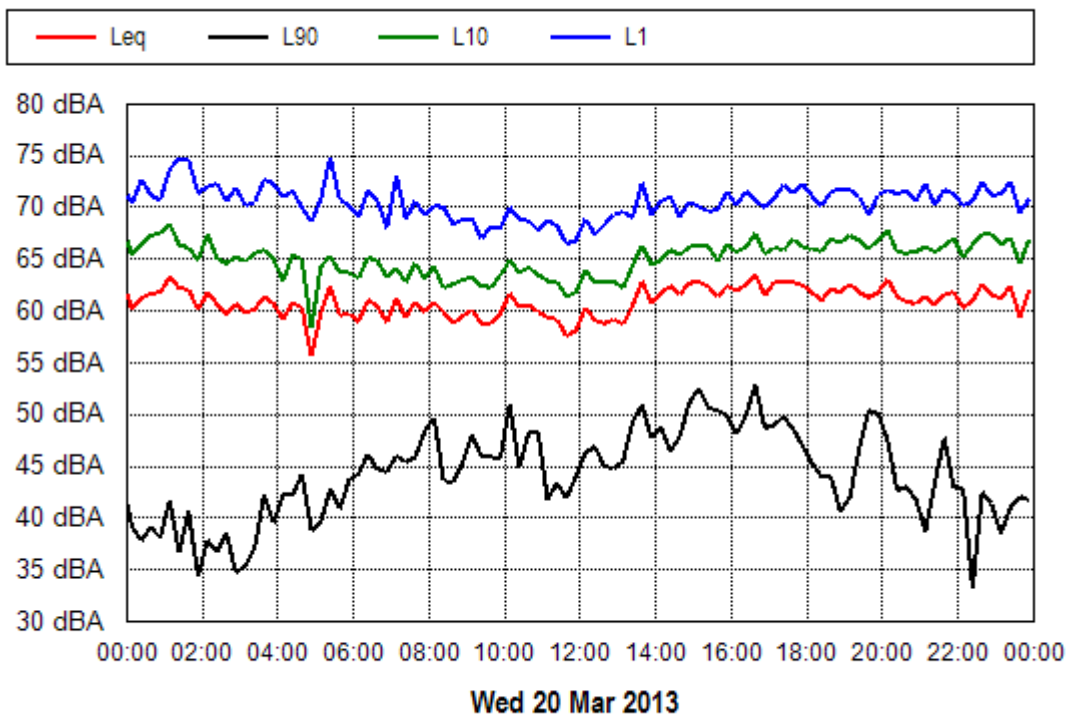
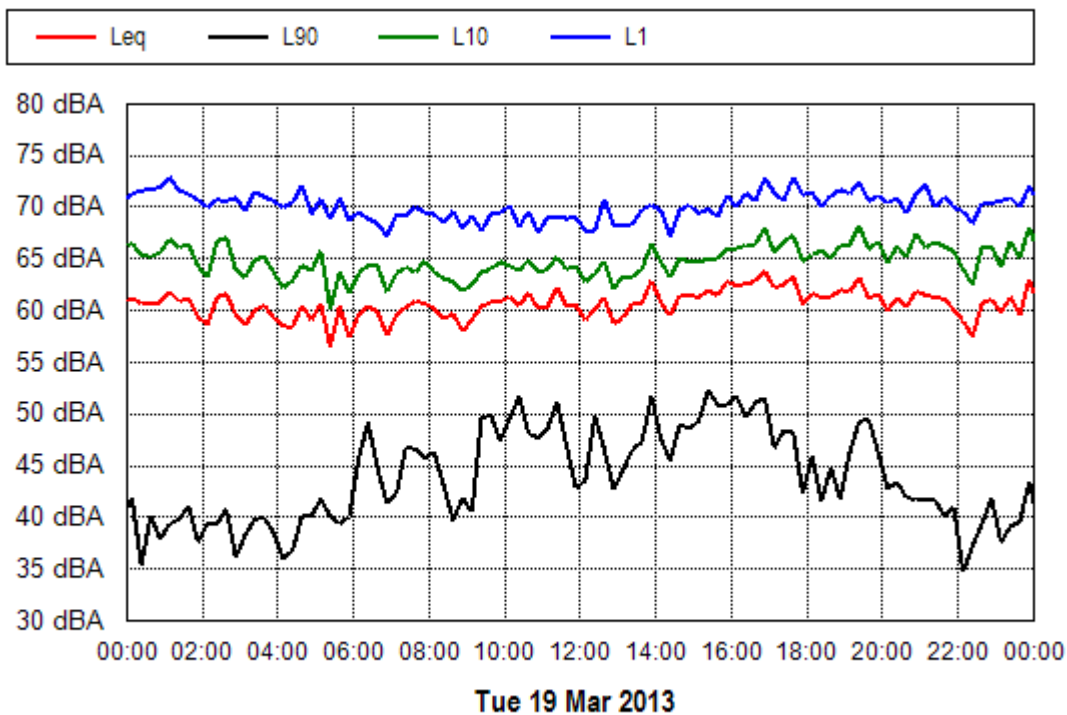
Location: 3349 Pacific Hwy



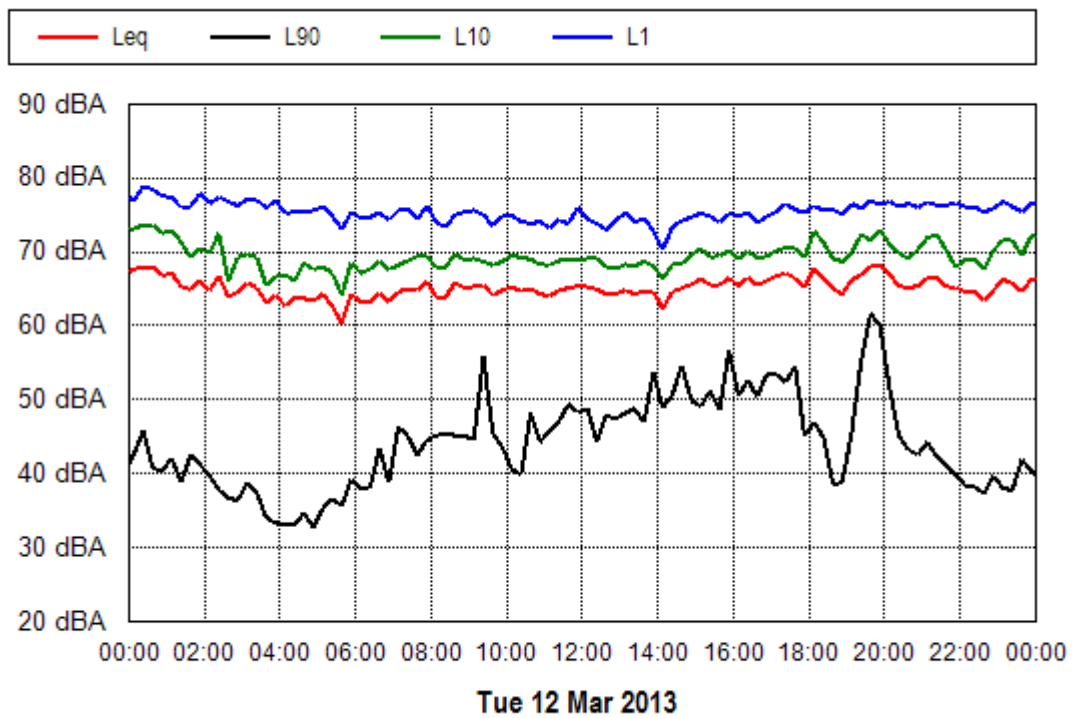
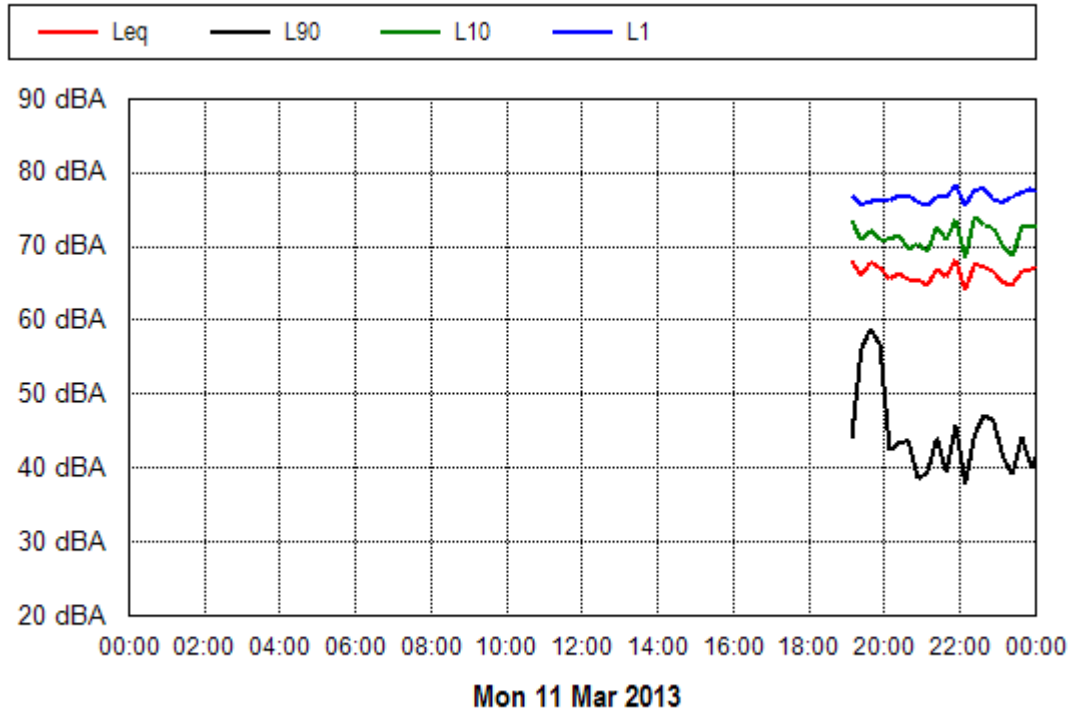
Location: 3349 Pacific Hwy:



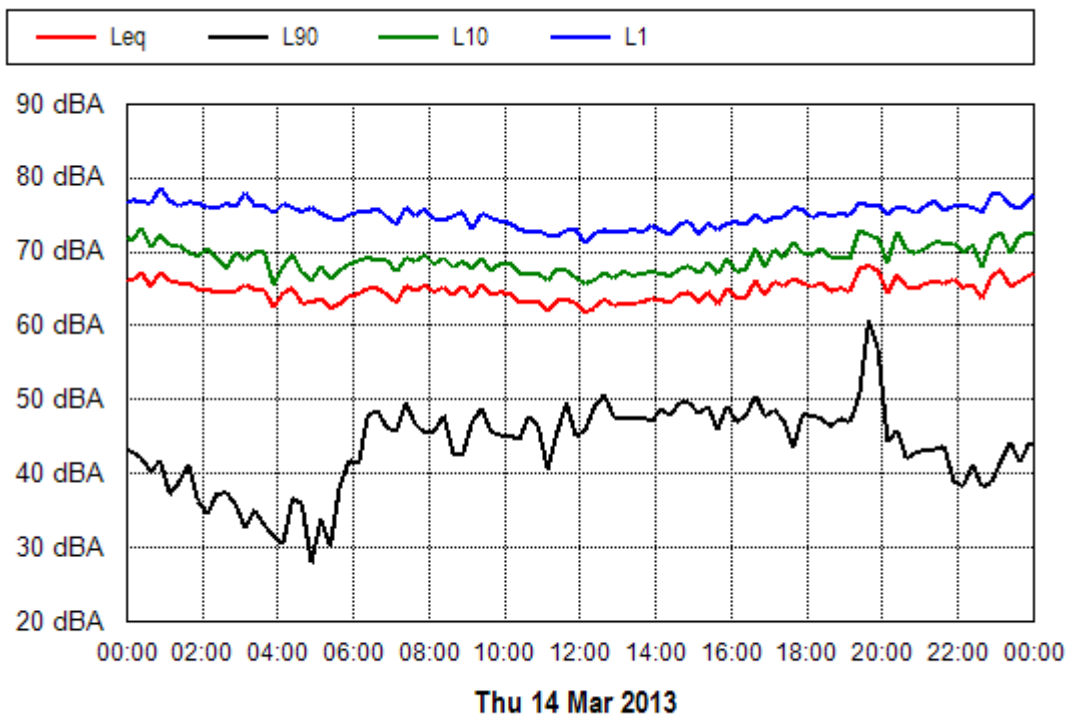
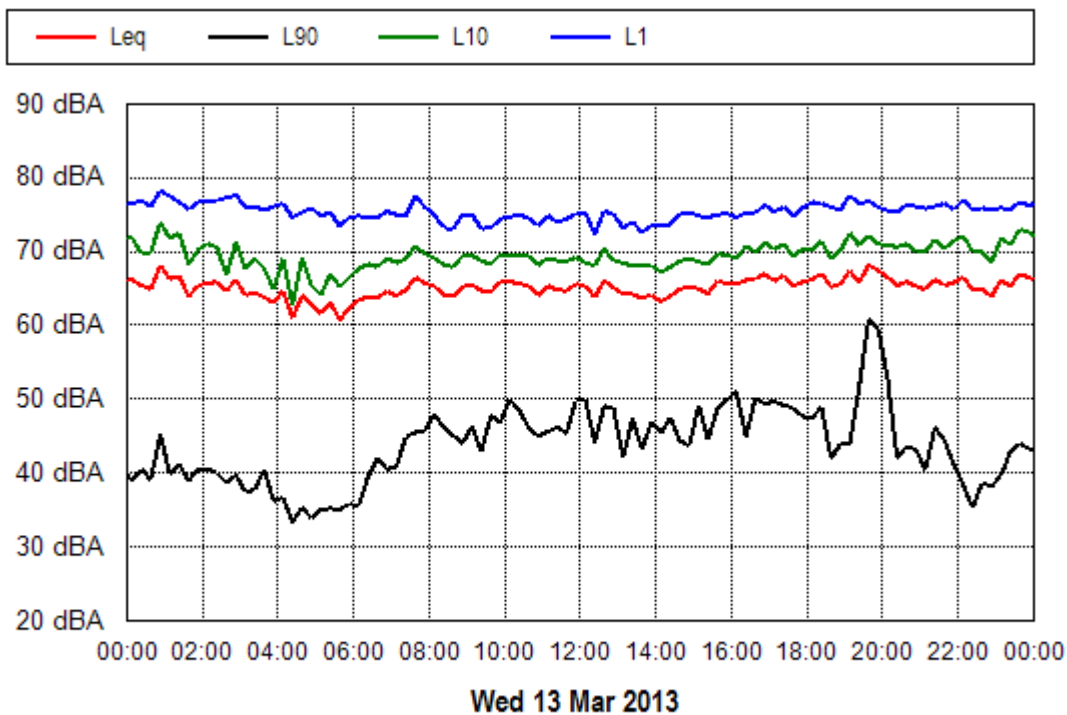
Location: 3349 Pacific Hwy



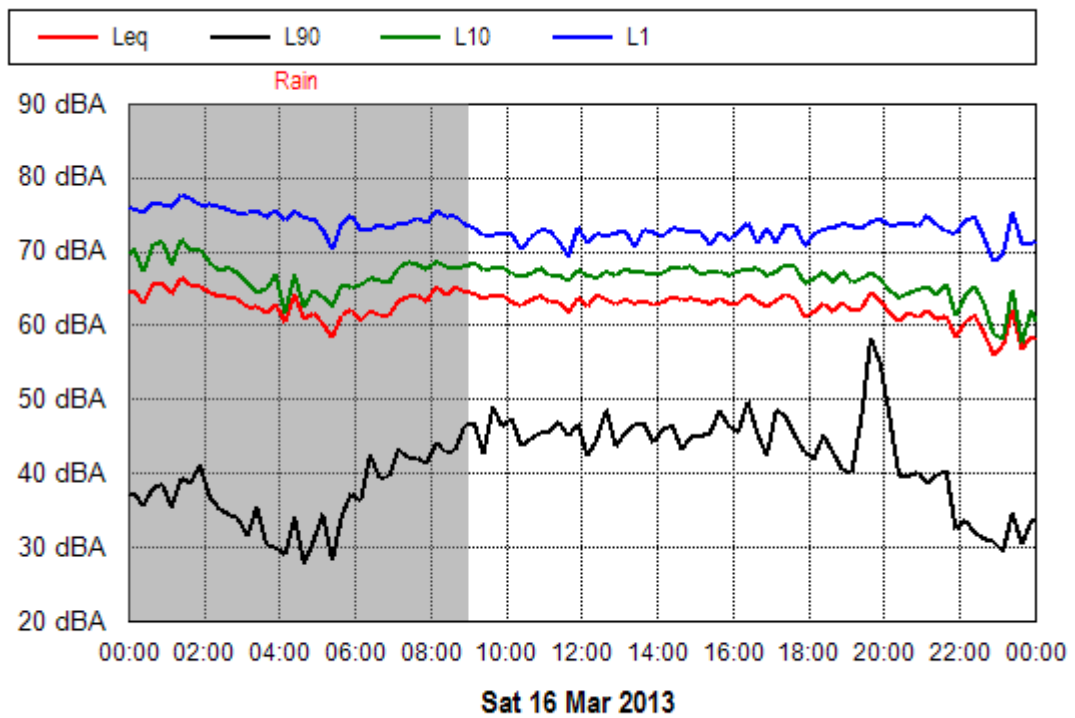
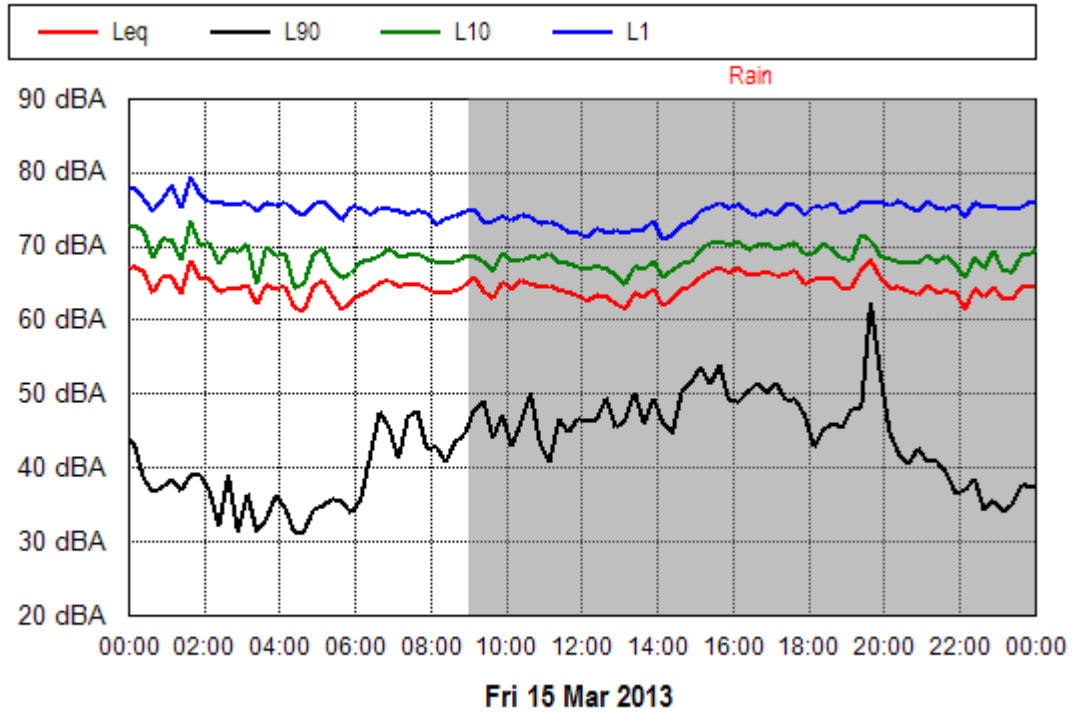
Location: 3381 Pacific Hwy (Facade)



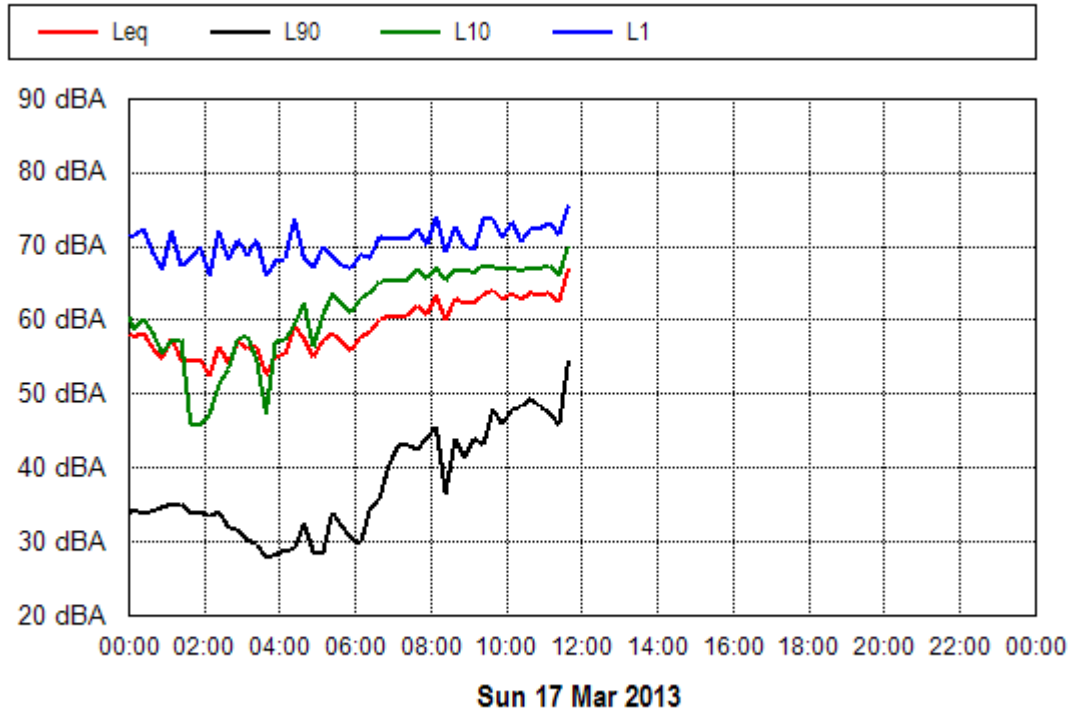
Location: 3381 Pacific Hwy (Facade)



Location: 3381 Pacific Hwy (Facade)



Location: 3381 Pacific Hwy (Facade)





APPENDIX D

PREDICTED OPERATIONAL NOISE LEVELS FOR 'EXISTING 2013',
'YEAR OF PROJECT OPENING 2016' AND '10 YEARS AFTER
OPENING 2026'



Address	ID	Base Criteria		Existing Noise Levels		2016 Design Noise Levels		2026 Design Noise Levels		2026 Noise Levels Exceed Criteria?		Is difference Greater than 2dB?		2026 Design Noise Acute?		Mitigation Required?	
		Day	Night	Day	Night	Day	Night	Day	Night	Day	Night	Day	Night	Day	Night	Day	Night
107 Raymonds Lane	19a	55	50	43	41	58	54	60	56	Yes	Yes	Yes	Yes	No	No	Yes	Yes
Yarrabindi Road	19c	55	50	43	41	56	53	58	55	Yes	Yes	Yes	Yes	No	No	Yes	Yes
77 Raymonds Lane	19d	55	50	41	39	54	51	56	53	Yes	Yes	Yes	Yes	No	No	Yes	Yes
67 Raymonds Lane	19e	55	50	41	39	54	50	56	52	Yes	Yes	Yes	Yes	No	No	Yes	Yes
47 Raymonds Lane	19f	55	50	41	38	52	48	54	51	No	Yes	Yes	Yes	No	No	No	Yes
322 Kemps Access	20a	55	50	28	25	49	46	52	48	No	No	Yes	Yes	No	No	No	No
279 Kemps Access	20c	55	50	27	24	60	57	62	59	Yes	Yes	Yes	Yes	No	No	Yes	Yes
285 Kemps Access	20d	55	50	32	30	57	53	59	55	Yes	Yes	Yes	Yes	No	No	Yes	Yes
330 Kemps Access	20e	55	50	37	34	49	45	51	47	No	No	Yes	Yes	No	No	No	No
331 Kemps Access	20f	55	50	38	36	51	48	53	50	No	No	Yes	Yes	No	No	No	No
336 Kemps Access	20g	55	50	36	34	48	44	50	47	No	No	Yes	Yes	No	No	No	No
Lot 126	20h	55	50	38	35	50	46	52	48	No	No	Yes	Yes	No	No	No	No
244 Quarry Road	20i	55	50	42	40	52	49	54	51	No	Yes	Yes	Yes	No	No	No	Yes
232 Quarry Road (1st floor)	21a	55	50	40	37	63	59	65	61	Yes	Yes	Yes	Yes	Yes	Yes	Yes	Yes
232 Quarry Road	21a	55	50	39	37	60	57	62	59	Yes	Yes	Yes	Yes	No	No	Yes	Yes
26 Seashore Lane	21c	55	50	39	37	60	57	62	59	Yes	Yes	Yes	Yes	No	No	Yes	Yes
53 Seashore Lane	21d	55	50	38	36	61	58	64	60	Yes	Yes	Yes	Yes	No	Yes	Yes	Yes
201 Kemps Access	21e	55	50	34	32	51	48	53	50	No	No	Yes	Yes	No	No	No	No
243 Kemps Access	21g	55	50	35	33	59	55	61	58	Yes	Yes	Yes	Yes	No	No	Yes	Yes
260 Quarry Road	21h	55	50	39	36	62	58	64	60	Yes	Yes	Yes	Yes	No	Yes	Yes	Yes
276 Quarry Road	21i	55	50	37	35	50	46	52	49	No	No	Yes	Yes	No	No	No	No
298 Quarry Road	21j	55	50	36	33	48	45	50	47	No	No	Yes	Yes	No	No	No	No
298 Quarry Road (1st floor)	21j	55	50	37	35	50	46	52	48	No	No	Yes	Yes	No	No	No	No
312 Quarry Road	21k	55	50	37	35	50	47	53	49	No	No	Yes	Yes	No	No	No	No
318 Quarry Road	21l	55	50	36	33	50	47	53	49	No	No	Yes	Yes	No	No	No	No

Address	ID	Base Criteria		Existing Noise Levels		2016 Design Noise Levels		2026 Design Noise Levels		2026 Noise Levels Exceed Criteria?		Is difference Greater than 2dB?		2026 Design Noise Acute?		Mitigation Required?	
		Day	Night	Day	Night	Day	Night	Day	Night	Day	Night	Day	Night	Day	Night	Day	Night
82 Kemps Access	21m	55	50	35	33	48	45	50	47	No	No	Yes	Yes	No	No	No	No
84 Kemps Access	21n	55	50	35	33	49	45	51	47	No	No	Yes	Yes	No	No	No	No
Tamban Road	22b	55	50	38	36	58	54	60	56	Yes	Yes	Yes	Yes	No	No	Yes	Yes
Tamban Road (22b-1)	22b-1	55	50	38	36	64	60	66	62	Yes	Yes	Yes	Yes	Yes	Yes	Yes	Yes
114 Seven Hills Road	23a	55	50	28	26	53	49	55	52	No	Yes	Yes	Yes	No	No	No	Yes
135 Cooks Lane	25-135	55	50	45	43	50	47	52	49	No	No	Yes	Yes	No	No	No	No
288 Cooks Lane	25a	55	50	43	41	53	50	55	52	No	Yes	Yes	Yes	No	No	No	Yes
269 Cooks Lane	25b	55	50	43	41	63	59	65	62	Yes	Yes	Yes	Yes	Yes	Yes	Yes	Yes
321 Cooks Lane	25c	55	50	41	38	53	49	55	51	No	Yes	Yes	Yes	No	No	No	Yes
Lot 42 Cooks Lane	25d	55	50	42	40	57	53	59	55	Yes	Yes	Yes	Yes	No	No	Yes	Yes
Lot 1862	25e	55	50	42	39	52	48	54	50	No	No	Yes	Yes	No	No	No	No
80 Hills Lane	26a	55	50	47	44	55	51	57	54	Yes	Yes	Yes	Yes	No	No	Yes	Yes
2693 Pacific Highway	26b	55	50	42	39	50	46	52	48	No	No	Yes	Yes	No	No	No	No
59 Nirvana Way	26c	55	50	49	47	60	56	62	59	Yes	Yes	Yes	Yes	No	No	Yes	Yes
92 Nirvana Way	27a	55	50	47	44	51	48	54	50	No	No	Yes	Yes	No	No	No	No
Lot 47 Nirvana Way	27b	55	50	53	51	59	55	61	57	Yes	Yes	Yes	Yes	No	No	Yes	Yes
3037 Pacific Highway	27c	55	50	55	52	57	53	59	55	Yes	Yes	Yes	Yes	No	No	Yes	Yes
6 Nirvana Way	28a	55	50	55	52	57	53	59	55	Yes	Yes	Yes	Yes	No	No	Yes	Yes
2925 Pacific Highway	28b	55	50	53	51	55	52	58	54	Yes	Yes	Yes	Yes	No	No	Yes	Yes
2987 Pacific Highway	28c	55	50	54	52	62	58	64	61	Yes	Yes	Yes	Yes	No	Yes	Yes	Yes
3012 Pacific Highway	28d	55	50	58	56	53	50	56	52	Yes	Yes	No	No	No	No	No	No
6 Thurgood Lane	28e	55	50	54	52	53	49	55	51	No	Yes	No	No	No	No	No	No
33 Barraganttyatti Hut Road	29a	60	55	54	52	57	53	59	55	No	No	Yes	Yes	No	No	No	No
3349 Pacific Highway	29b	60	55	65	63	70	66	72	68	Yes	Yes	Yes	Yes	Yes	Yes	Yes	Yes
3381 Pacific Highway	29c	60	55	66	64	70	66	72	68	Yes	Yes	Yes	Yes	Yes	Yes	Yes	Yes

Address	ID	Base Criteria		Existing Noise Levels		2016 Design Noise Levels		2026 Design Noise Levels		2026 Noise Levels Exceed Criteria?		Is difference Greater than 2dB?		2026 Design Noise Acute?		Mitigation Required?	
		Day	Night	Day	Night	Day	Night	Day	Night	Day	Night	Day	Night	Day	Night	Day	Night
3423 Pacific Highway	29d	60	55	60	57	63	59	65	62	Yes	Yes	Yes	Yes	Yes	Yes	Yes	Yes
3345 Pacific Highway	29e	60	55	62	60	63	59	65	62	Yes	Yes	Yes	No	Yes	Yes	Yes	Yes
Lot 1_135 Station Street	29f	60	55	56	54	61	58	63	60	Yes	Yes	Yes	Yes	No	Yes	Yes	Yes
Lot 1_113 Station Street	29g	60	55	51	49	56	53	58	55	No	No	Yes	Yes	No	No	No	No
76 Station Street	29h	60	55	51	49	55	52	58	54	No	No	Yes	Yes	No	No	No	No
74 Station Street	29i	60	55	51	49	56	53	59	55	No	No	Yes	Yes	No	No	No	No
74 Station Street	29i	60	55	51	48	55	52	58	54	No	No	Yes	Yes	No	No	No	No
72 Station Street	29j	60	55	48	45	53	50	55	52	No	No	Yes	Yes	No	No	No	No
72 Station Street	29j	60	55	50	48	55	51	57	54	No	No	Yes	Yes	No	No	No	No
70 Station Street	29k	60	55	48	45	55	51	57	54	No	No	Yes	Yes	No	No	No	No
70 Station Street	29k	60	55	50	48	53	50	55	52	No	No	Yes	Yes	No	No	No	No
68 Station Street	29l	60	55	51	48	54	51	56	53	No	No	Yes	Yes	No	No	No	No
68 Station Street	29l	60	55	50	47	56	52	58	54	No	No	Yes	Yes	No	No	No	No
64 Station Street	29m	60	55	50	48	55	52	57	54	No	No	Yes	Yes	No	No	No	No
135 South Bank Road	29n	60	55	51	49	56	53	58	55	No	No	Yes	Yes	No	No	No	No
2 South Bank Road East	29o	60	55	51	49	58	54	60	56	No	Yes	Yes	Yes	No	No	No	Yes
60 Stuarts Point Road	30a	60	55	53	50	58	55	60	57	No	Yes	Yes	Yes	No	No	No	Yes
51 Stuarts Point Road	30b	60	55	50	48	61	58	64	60	Yes	Yes	Yes	Yes	No	Yes	Yes	Yes
21 Stuarts Point Road	30c	60	55	51	48	65	62	68	64	Yes	Yes	Yes	Yes	Yes	Yes	Yes	Yes
Lot 2 Thurgood Lane	30d	60	55	52	49	56	52	58	54	No	No	Yes	Yes	No	No	No	No
55 Stuarts Point Road	30e	60	55	49	46	60	57	62	59	Yes	Yes	Yes	Yes	No	No	Yes	Yes
29 Brushbox Road	31a	60	55	54	52	59	56	61	58	Yes	Yes	Yes	Yes	No	No	Yes	Yes
3386 Pacific Highway	31b	60	55	56	54	61	58	63	60	Yes	Yes	Yes	Yes	No	Yes	Yes	Yes
3420 Pacific Highway	31c	60	55	63	60	69	66	72	68	Yes	Yes	Yes	Yes	Yes	Yes	Yes	Yes
36 Station Street		60	55	51	48	56	52	58	54	No	No	Yes	Yes	No	No	No	No

Address	ID	Base Criteria		Existing Noise Levels		2016 Design Noise Levels		2026 Design Noise Levels		2026 Noise Levels Exceed Criteria?		Is difference Greater than 2dB?		2026 Design Noise Acute?		Mitigation Required?	
		Day	Night	Day	Night	Day	Night	Day	Night	Day	Night	Day	Night	Day	Night	Day	Night
40 Station Street		60	55	50	47	54	51	57	53	No	No	Yes	Yes	No	No	No	No
46 Station Street		60	55	52	50	57	53	59	56	No	Yes	Yes	Yes	No	No	No	Yes
50 Station Street		60	55	50	48	57	53	59	55	No	No	Yes	Yes	No	No	No	No
60 Station Street		60	55	51	48	56	52	58	55	No	No	Yes	Yes	No	No	No	No
62 Station Street		60	55	51	48	56	52	58	54	No	No	Yes	Yes	No	No	No	No
4 South Bank East Rd		60	55	51	49	57	54	60	56	No	Yes	Yes	Yes	No	No	No	Yes
6 South Bank East Rd		60	55	49	47	56	53	58	55	No	No	Yes	Yes	No	No	No	No

APPENDIX E
TRAFFIC NOISE CONTOURS

PACIFIC HIGHWAY UPGRADE

Frederickton to Eungai

Noise Contours - Year 2016 DAY

Cover Page

Drawing Set

- F2E-00G-SKT-NV002-0000 Cover Page
- F2E-00G-SKT-NV002-0001 Key Plan
- F2E-00G-SKT-NV002-0002 Sketch
- F2E-00G-SKT-NV002-0003 Sketch
- F2E-00G-SKT-NV002-0004 Sketch
- F2E-00G-SKT-NV002-0005 Sketch
- F2E-00G-SKT-NV002-0006 Sketch
- F2E-00G-SKT-NV002-0007 Sketch
- F2E-00G-SKT-NV002-0008 Sketch
- F2E-00G-SKT-NV002-0009 Sketch

Rev	Description	Date	Approved
D1	DETAILED DESIGN ISSUE	10-09-13	NG
B2	DETAILED DESIGN ISSUE	18-07-13	NG

Legend

- SWTC Table 4.4 Noise Receiver (RMS Treated)
- SWTC Table 4.5 Noise Receiver (RMS Treated)
- Thiess Monitoring Location
- Additional Noise Receiver
- Additional Noise Catchment Area

1:10 000 @ A3

SKETCH

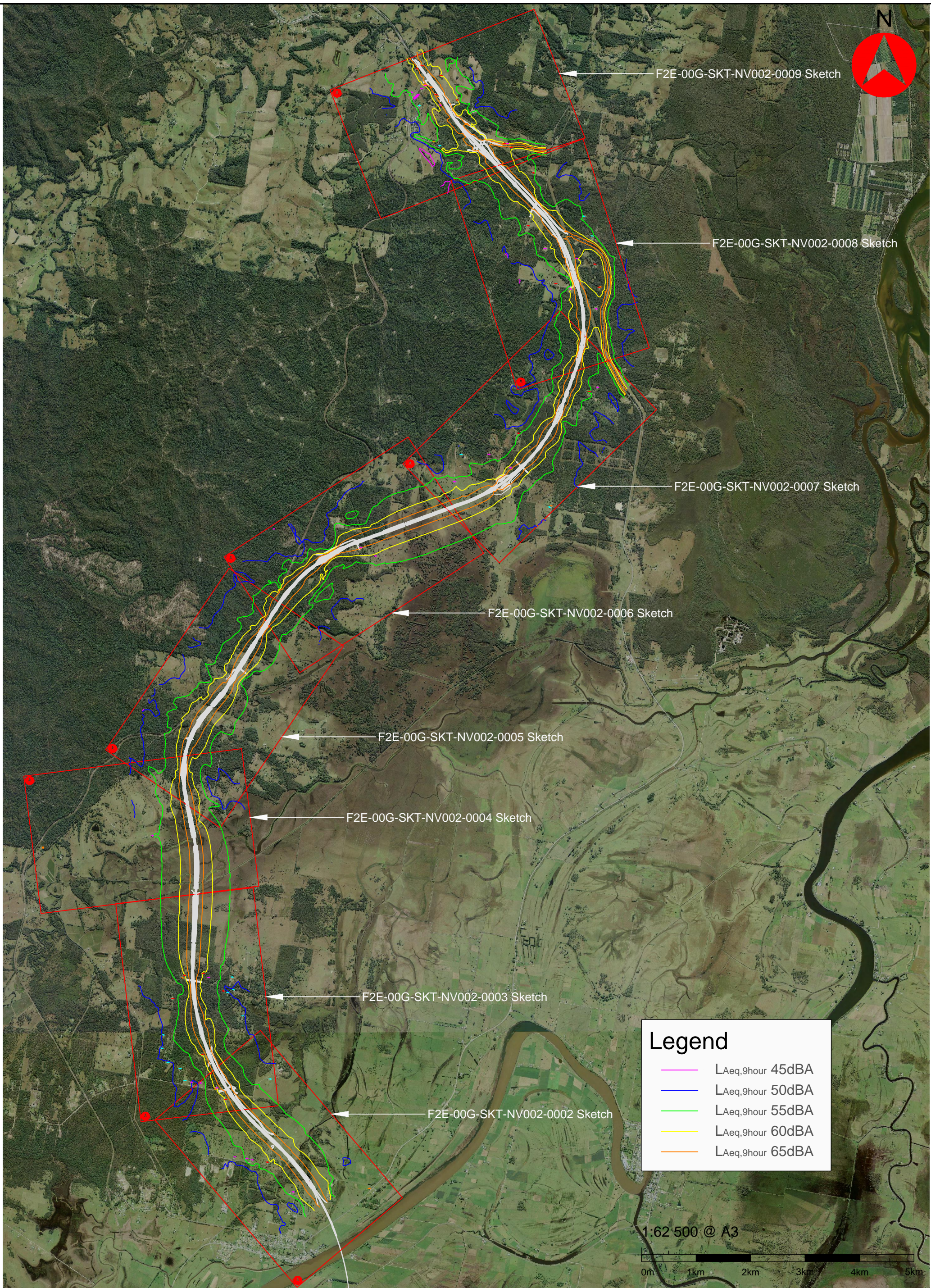
Status DETAILED DESIGN			
Original	A3	Drawn	JP
Coordinate System MGA ZONE 56		Designed	JP
		Date Printed	10 SEP 2013
Filename: F2E-00G-SKT-NV002-0000.dwg			

WILKINSON MURRAY

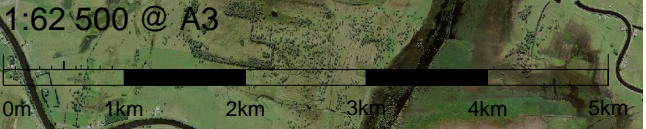
Wilkinson Murray PTY LTD
Level 4, 272 Pacific Highway
Crows Nest NSW 2065
PH (02) 9437 4611
Fax (02) 9437 4393

ACOUSTICS AND AIR

PACIFIC HIGHWAY UPGRADE					
FREDERICKTON TO EUNGAI					
NOISE CONTOURS - YEAR 2016 DAY					
COVER PAGE					
Company	Zone	Type	Design Lot	Sketch No.	Rev
F2E -	00G -	SKT -	NV002 -	0000	D1



Legend	
—	LAeq,9hour 45dBA
—	LAeq,9hour 50dBA
—	LAeq,9hour 55dBA
—	LAeq,9hour 60dBA
—	LAeq,9hour 65dBA



Rev	Description	Date	Approved
D1	DETAILED DESIGN ISSUE	10-09-13	NG
B2	DETAILED DESIGN ISSUE	18-07-13	NG

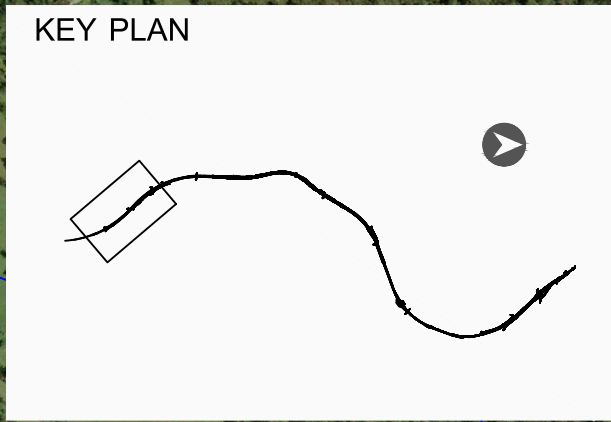
Status				DETAILED DESIGN			
Original Size	A3	Drawn	JP	Designed	JP	Date Printed	10 SEP 2013
Coordinate System				MGA ZONE 56			
Filename: F2E-00G-SKT-NV002-0001.dwg							

WILKINSON MURRAY

Wilkinson Murray PTY LTD
 Level 4, 272 Pacific Highway
 Crows Nest NSW 2065
 PH (02) 9437 4611
 Fax (02) 9437 4393

ACOUSTICS AND AIR

PACIFIC HIGHWAY UPGRADE FREDERICKTON TO EUNGAI NOISE CONTOURS - YEAR 2016 DAY ALIGNMENT KEY PLAN SHEET 1 OF 9					
Company	Zone	Type	Design Lot	Sketch No.	Rev
F2E - 00G - SKT - NV002 - 0001					D1



D1	DETAILED DESIGN ISSUE	10-09-13	NG
B2	DETAILED DESIGN ISSUE	18-07-13	NG
Rev	Description	Date	Approved

Legend

- SWTC Table 4.4 Noise Receiver (RMS Treated)
- SWTC Table 4.5 Noise Receiver (RMS Treated)
- Thiess Monitoring Location
- Additional Noise Receiver
- Additional Noise Catchment Area

1:10 000 @ A3

Year 2016 Year of Opening Day Noise Contour

- L_{Aeq,9hour} 45dBA
- L_{Aeq,9hour} 50dBA
- L_{Aeq,9hour} 55dBA
- L_{Aeq,9hour} 60dBA
- L_{Aeq,9hour} 65dBA

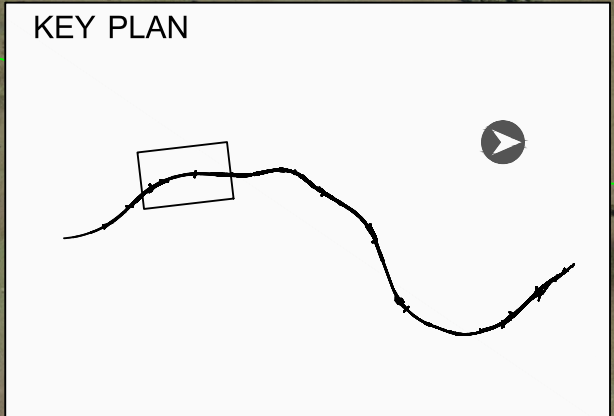
Status			
DETAILED DESIGN			
Original	A3	Drawn	JP
Coordinate System	MGA ZONE 56	Designed	JP
		Date Printed	10 SEP 2013
Filename: F2E-00G-SKT-NV002-0002.dwg			

WILKINSON MURRAY

Wilkinson Murray PTY LTD
 Level 4, 272 Pacific Highway
 Crows Nest NSW 2065
 PH (02) 9437 4611
 Fax (02) 9437 4393

ACOUSTICS AND AIR

PACIFIC HIGHWAY UPGRADE					
FREDERICKTON TO EUNGAI					
NOISE CONTOURS - YEAR 2016 Day					
SHEET 2 OF 9					
Company	Zone	Type	Design Lot	Sketch No.	Rev
F2E	00G	SKT	NV002	0002	D1



D1	DETAILED DESIGN ISSUE	10-09-13	NG
B2	DETAILED DESIGN ISSUE	18-07-13	NG
Rev	Description	Date	Approved

Legend

- SWTC Table 4.4 Noise Receiver (RMS Treated)
- SWTC Table 4.5 Noise Receiver (RMS Treated)
- Thiess Monitoring Location
- Additional Noise Receiver
- Additional Noise Catchment Area

1:10 000 @ A3

Year 2016 Year of Opening Day Noise Contour

- L_{Aeq,9hour} 45dBA
- L_{Aeq,9hour} 50dBA
- L_{Aeq,9hour} 55dBA
- L_{Aeq,9hour} 60dBA
- L_{Aeq,9hour} 65dBA

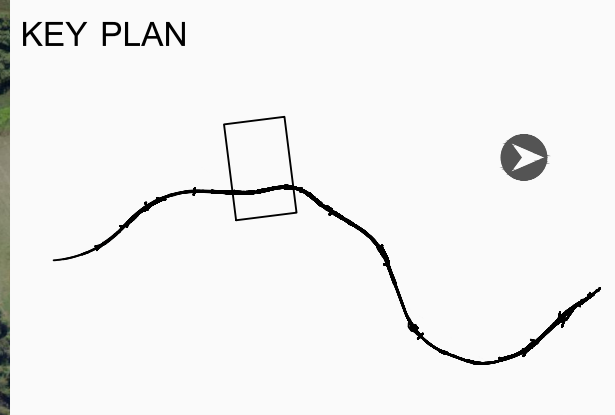
Status			
DETAILED DESIGN			
Original	A3	Drawn	JP
Coordinate System	MGA ZONE 56	Designed	JP
		Date Printed	10 SEP 2013
Filename: F2E-00G-SKT-NV002-0003.dwg			

WILKINSON MURRAY

Wilkinson Murray PTY LTD
 Level 4, 272 Pacific Highway
 Crows Nest NSW 2065
 PH (02) 9437 4611
 Fax (02) 9437 4393

ACOUSTICS AND AIR

PACIFIC HIGHWAY UPGRADE					
FREDERICKTON TO EUNGAI					
NOISE CONTOURS - YEAR 2016 Day					
SHEET 3 OF 9					
Company	Zone	Type	Design Lot	Sketch No.	Rev
F2E	00G	SKT	NV002	0003	D1



D1	DETAILED DESIGN ISSUE	10-09-13	NG
B2	DETAILED DESIGN ISSUE	18-07-13	NG
Rev	Description	Date	Approved

Legend

- SWTC Table 4.4 Noise Receiver (RMS Treated)
- SWTC Table 4.5 Noise Receiver (RMS Treated)
- Thiess Monitoring Location
- Additional Noise Receiver
- Additional Noise Catchment Area

1:10 000 @ A3

Year 2016 Year of Opening Day Noise Contour

- L_{Aeq,9hour} 45dBA
- L_{Aeq,9hour} 50dBA
- L_{Aeq,9hour} 55dBA
- L_{Aeq,9hour} 60dBA
- L_{Aeq,9hour} 65dBA

Status			
DETAILED DESIGN			
Original	A3	Drawn	JP
Coordinate System	MGA ZONE 56	Designed	JP
		Date Printed	10 SEP 2013
Filename: F2E-00G-SKT-NV002-0004.dwg			

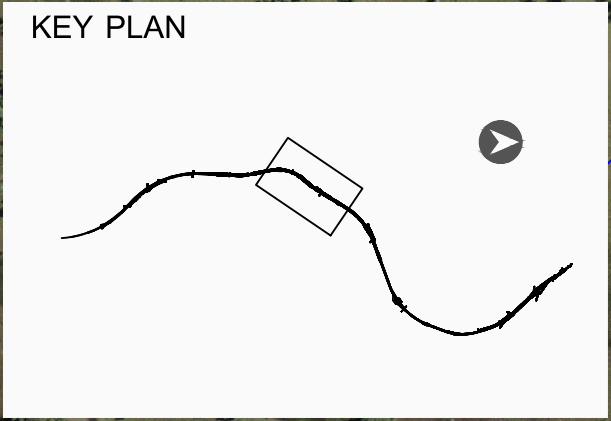
WILKINSON MURRAY

Wilkinson Murray PTY LTD
 Level 4, 272 Pacific Highway
 Crows Nest NSW 2065
 PH (02) 9437 4611
 Fax (02) 9437 4393

ACOUSTICS AND AIR

PACIFIC HIGHWAY UPGRADE
 FREDERICKTON TO EUNGAI
 NOISE CONTOURS - YEAR 2016 Day
 SHEET 4 OF 9

Company	Zone	Type	Design Lot	Sketch No.	Rev
F2E	00G	SKT	NV002	0004	D1



D1	DETAILED DESIGN ISSUE	10-09-13	NG
B2	DETAILED DESIGN ISSUE	18-07-13	NG
Rev	Description	Date	Approved

Legend

- SWTC Table 4.4 Noise Receiver (RMS Treated)
- SWTC Table 4.5 Noise Receiver (RMS Treated)
- Thiess Monitoring Location
- Additional Noise Receiver
- Additional Noise Catchment Area

1:10 000 @ A3

Year 2016 Year of Opening Day Noise Contour

- L_{Aeq,9hour} 45dBA
- L_{Aeq,9hour} 50dBA
- L_{Aeq,9hour} 55dBA
- L_{Aeq,9hour} 60dBA
- L_{Aeq,9hour} 65dBA

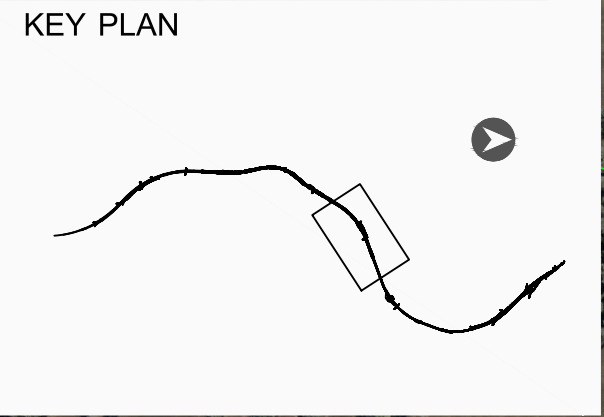
Status			
DETAILED DESIGN			
Original	A3	Drawn	JP
Coordinate System	MGA ZONE 56	Designed	JP
		Date Printed	10 SEP 2013
Filename: F2E-00G-SKT-NV002-0005.dwg			

WILKINSON MURRAY

Wilkinson Murray PTY LTD
 Level 4, 272 Pacific Highway
 Crows Nest NSW 2065
 PH (02) 9437 4611
 Fax (02) 9437 4393

ACOUSTICS AND AIR

PACIFIC HIGHWAY UPGRADE					
FREDERICKTON TO EUNGAI					
NOISE CONTOURS - YEAR 2016 Day					
SHEET 5 OF 9					
Company	Zone	Type	Design Lot	Sketch No.	Rev
F2E	00G	SKT	NV002	0005	D1



D1	DETAILED DESIGN ISSUE	10-09-13	NG
B2	DETAILED DESIGN ISSUE	18-07-13	NG
Rev	Description	Date	Approved

Legend

- SWTC Table 4.4 Noise Receiver (RMS Treated)
- SWTC Table 4.5 Noise Receiver (RMS Treated)
- Thiess Monitoring Location
- Additional Noise Receiver
- Additional Noise Catchment Area

1:10 000 @ A3

Year 2016 Year of Opening Day Noise Contour

- L_{Aeq,9hour} 45dBA
- L_{Aeq,9hour} 50dBA
- L_{Aeq,9hour} 55dBA
- L_{Aeq,9hour} 60dBA
- L_{Aeq,9hour} 65dBA

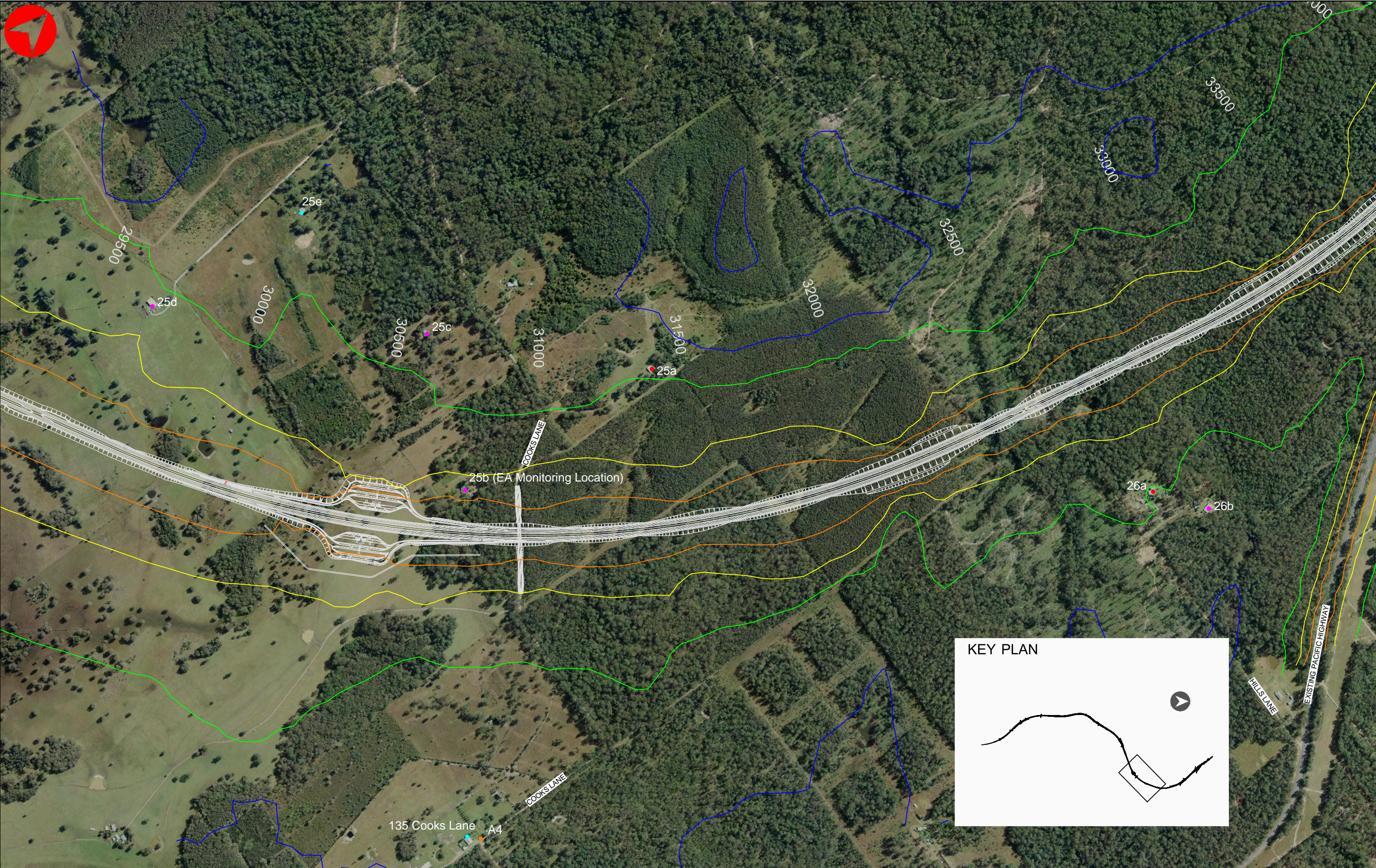
Status			
DETAILED DESIGN			
Original	A3	Drawn	JP
Coordinate System	MGA ZONE 56	Designed	JP
		Date Printed	10 SEP 2013
Filename: F2E-00G-SKT-NV002-0006.dwg			

WILKINSON MURRAY

Wilkinson Murray PTY LTD
 Level 4, 272 Pacific Highway
 Crows Nest NSW 2065
 PH (02) 9437 4611
 Fax (02) 9437 4393

ACOUSTICS AND AIR

PACIFIC HIGHWAY UPGRADE					
FREDERICKTON TO EUNGAI					
NOISE CONTOURS - YEAR 2016 Day					
SHEET 6 OF 9					
Company	Zone	Type	Design Lot	Sketch No.	Rev
F2E - 00G - SKT - NV002 - 0006					D1



D1	DETAILED DESIGN ISSUE	10-09-13	NG
B2	DETAILED DESIGN ISSUE	18-07-13	NG
Rev	Description	Date	Approved

Legend

- SWTC Table 4.4 Noise Receiver (RMS Treated)
- SWTC Table 4.5 Noise Receiver (RMS Treated)
- Thiess Monitoring Location
- Additional Noise Receiver
- Additional Noise Catchment Area

1:10 000 @ A3

Year 2016 Year of Opening Day Noise Contour

- L_{Aeq,9hour} 45dBA
- L_{Aeq,9hour} 50dBA
- L_{Aeq,9hour} 55dBA
- L_{Aeq,9hour} 60dBA
- L_{Aeq,9hour} 65dBA

Status			
DETAILED DESIGN			
Original	A3	Drawn	JP
Coordinate System	MGA ZONE 56	Designed	JP
Date Printed		10 SEP 2013	
Filename: F2E-00G-SKT-NV002-0007.dwg			

WILKINSON MURRAY

Wilkinson Murray PTY LTD
 Level 4, 272 Pacific Highway
 Crows Nest NSW 2065
 PH (02) 9437 4611
 Fax (02) 9437 4393

ACOUSTICS AND AIR

PACIFIC HIGHWAY UPGRADE					
FREDERICKTON TO EUNGAI					
NOISE CONTOURS - YEAR 2016 Day					
SHEET 7 OF 9					
Company	Zone	Type	Design Lot	Sketch No.	Rev
F2E	00G	SKT	NV002	0007	D1