

D1	DETAILED DESIGN ISSUE	10-09-13	NG
B2	DETAILED DESIGN ISSUE	18-07-13	NG
Rev	Description	Date	Approved

Legend

- SWTC Table 4.4 Noise Receiver (RMS Treated)
- SWTC Table 4.5 Noise Receiver (RMS Treated)
- Thiess Monitoring Location
- Additional Noise Receiver
- Additional Noise Catchment Area

1:10 000 @ A3

Year 2016 Year of Opening Day Noise Contour

- L_{Aeq,9hour} 45dBA
- L_{Aeq,9hour} 50dBA
- L_{Aeq,9hour} 55dBA
- L_{Aeq,9hour} 60dBA
- L_{Aeq,9hour} 65dBA

Status: **DETAILED DESIGN**

Original Size	A3	Drawn	JP
Coordinate System	MGA ZONE 56	Designed	JP
Date Printed		10 SEP 2013	

Filename: F2E-00G-SKT-NV002-0008.dwg

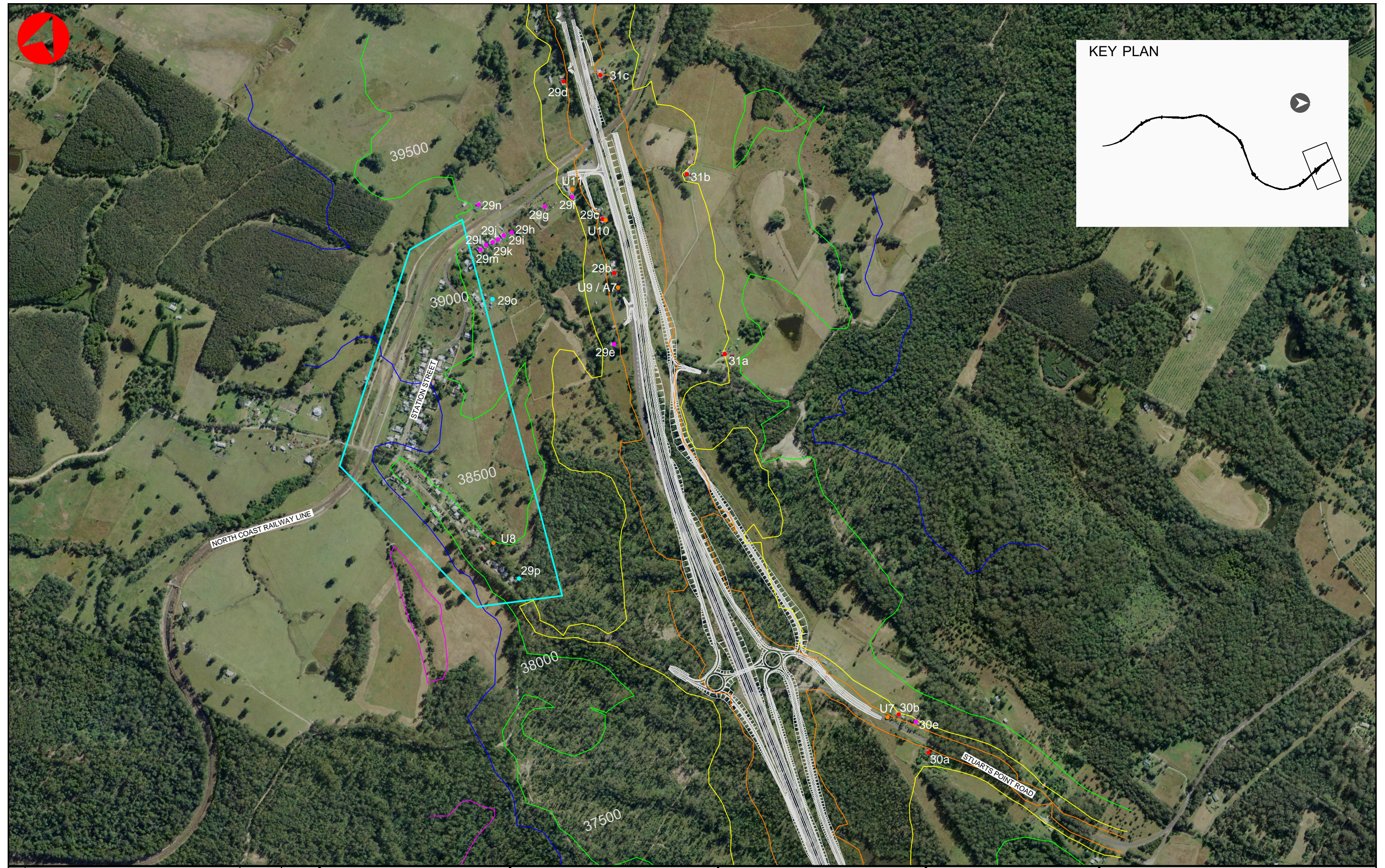
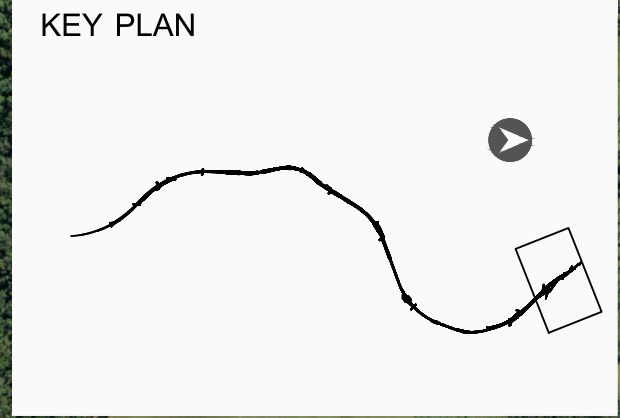
WILKINSON MURRAY

Wilkinson Murray PTY LTD
 Level 4, 272 Pacific Highway
 Crows Nest NSW 2065
 PH (02) 9437 4611
 Fax (02) 9437 4393

ACOUSTICS AND AIR

PACIFIC HIGHWAY UPGRADE
 FREDERICKTON TO EUNGAI
 NOISE CONTOURS - YEAR 2016 Day
 SHEET 8 OF 9

Company	Zone	Type	Design Lot	Sketch No.	Rev
F2E - 00G - SKT - NV002 - 0008					D1



D1	DETAILED DESIGN ISSUE	10-09-13	NG
B2	DETAILED DESIGN ISSUE	18-07-13	NG
Rev	Description	Date	Approved

Legend

- SWTC Table 4.4 Noise Receiver (RMS Treated)
- SWTC Table 4.5 Noise Receiver (RMS Treated)
- Thiess Monitoring Location
- Additional Noise Receiver
- Additional Noise Catchment Area

1:10 000 @ A3

Year 2016 Year of Opening Day Noise Contour

- L_{Aeq,9hour} 45dBA
- L_{Aeq,9hour} 50dBA
- L_{Aeq,9hour} 55dBA
- L_{Aeq,9hour} 60dBA
- L_{Aeq,9hour} 65dBA

Status: **DETAILED DESIGN**

Original	A3	Drawn	JP
Coordinate System	MGA ZONE 56	Designed	JP
Date Printed		10 SEP 2013	
Filename: F2E-00G-SKT-NV002-0009.dwg			

WILKINSON MURRAY

Wilkinson Murray PTY LTD
 Level 4, 272 Pacific Highway
 Crows Nest NSW 2065
 PH (02) 9437 4611
 Fax (02) 9437 4393

ACOUSTICS AND AIR

PACIFIC HIGHWAY UPGRADE
 FREDERICKTON TO EUNGAI
 NOISE CONTOURS - YEAR 2016 Day
 SHEET 9 OF 9

Company	Zone	Type	Design Lot	Sketch No.	Rev
F2E	00G	SKT	NV002	0009	D1

PACIFIC HIGHWAY UPGRADE

Frederickton to Eungai

Noise Contours - Year 2016 Night

Cover Page

Drawing Set

- F2E-00G-SKT-NV003-0000 Cover Page
- F2E-00G-SKT-NV003-0001 Key Plan
- F2E-00G-SKT-NV003-0002 Sketch
- F2E-00G-SKT-NV003-0003 Sketch
- F2E-00G-SKT-NV003-0004 Sketch
- F2E-00G-SKT-NV003-0005 Sketch
- F2E-00G-SKT-NV003-0006 Sketch
- F2E-00G-SKT-NV003-0007 Sketch
- F2E-00G-SKT-NV003-0008 Sketch
- F2E-00G-SKT-NV003-0009 Sketch

Rev	Description	Date	Approved
D1	DETAILED DESIGN ISSUE	10-09-13	NG
B2	DETAILED DESIGN ISSUE	18-07-13	NG

Legend

- SWTC Table 4.4 Noise Receiver (RMS Treated)
- SWTC Table 4.5 Noise Receiver (RMS Treated)
- Thiess Monitoring Location
- Additional Noise Receiver
- Additional Noise Catchment Area

1:10 000 @ A3

SKETCH

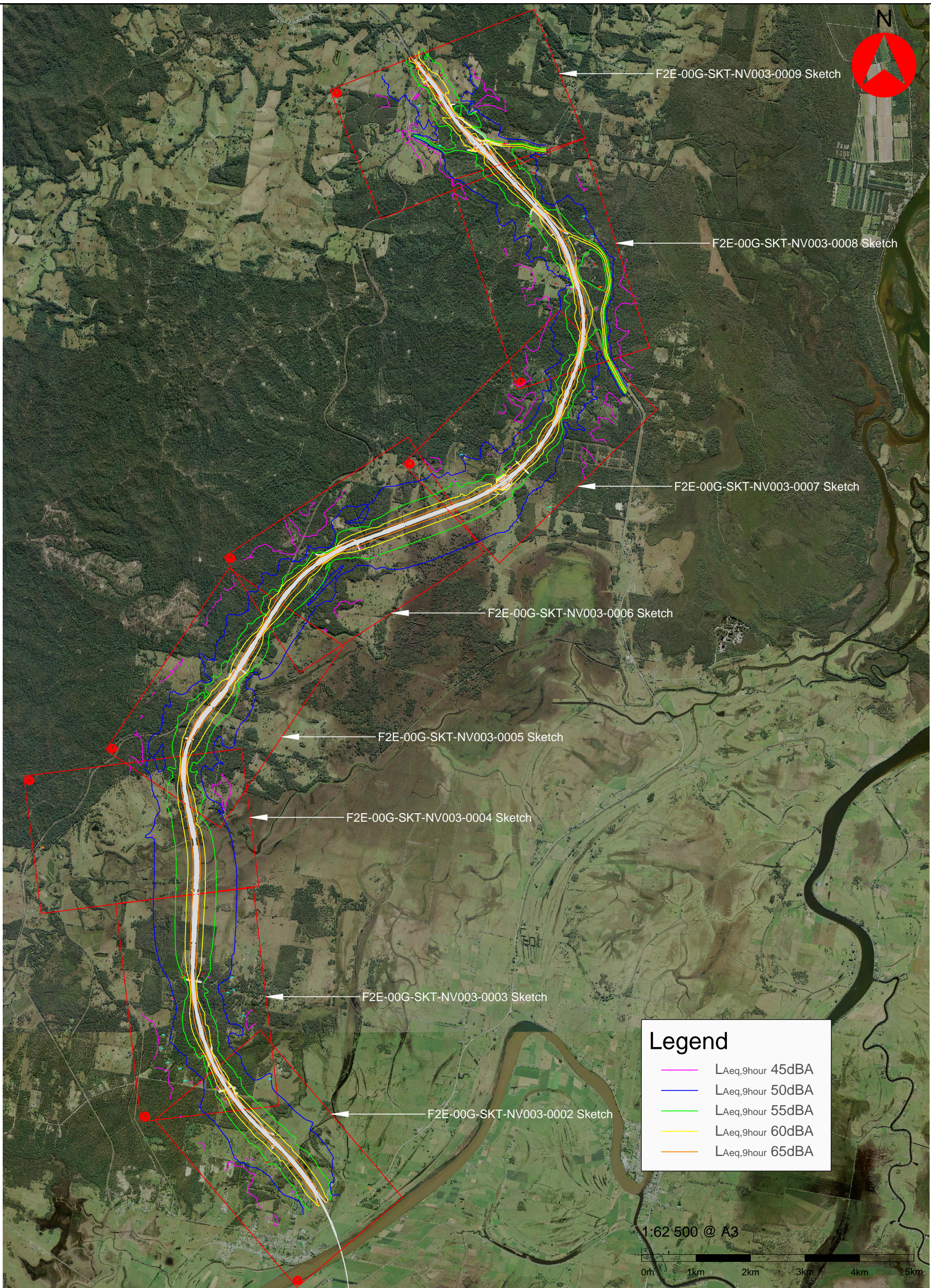
Status DETAILED DESIGN			
Original	A3	Drawn	JP
Coordinate System MGA ZONE 56		Designed	JP
		Date Printed	10 SEP 2013
Filename: F2E-00G-SKT-NV003-0000.dwg			

WILKINSON MURRAY

Wilkinson Murray PTY LTD
Level 4, 272 Pacific Highway
Crows Nest NSW 2065
PH (02) 9437 4611
Fax (02) 9437 4393

ACOUSTICS AND AIR

PACIFIC HIGHWAY UPGRADE					
FREDERICKTON TO EUNGAI					
NOISE CONTOURS - YEAR 2016 NIGHT					
COVER PAGE					
Company	Zone	Type	Design Lot	Sketch No.	Rev
F2E	00G	SKT	NV003	0000	D1



F2E-00G-SKT-NV003-0009 Sketch

F2E-00G-SKT-NV003-0008 Sketch

F2E-00G-SKT-NV003-0007 Sketch

F2E-00G-SKT-NV003-0006 Sketch

F2E-00G-SKT-NV003-0005 Sketch

F2E-00G-SKT-NV003-0004 Sketch

F2E-00G-SKT-NV003-0003 Sketch

F2E-00G-SKT-NV003-0002 Sketch

Legend

- LAeq,9hour 45dBA
- LAeq,9hour 50dBA
- LAeq,9hour 55dBA
- LAeq,9hour 60dBA
- LAeq,9hour 65dBA

1:62 500 @ A3



D1	DETAILED DESIGN ISSUE	10-09-13	NG
B2	DETAILED DESIGN ISSUE	18-07-13	NG
Rev	Description	Date	Approved

Status				DETAILED DESIGN			
Original Size	A3	Drawn	JP				
Coordinate System	MGA ZONE 56			Designed	JP		
				Date Printed	10 Sep 2013		
Filename:	F2E-00G-SKT-NV003-0001.dwg						

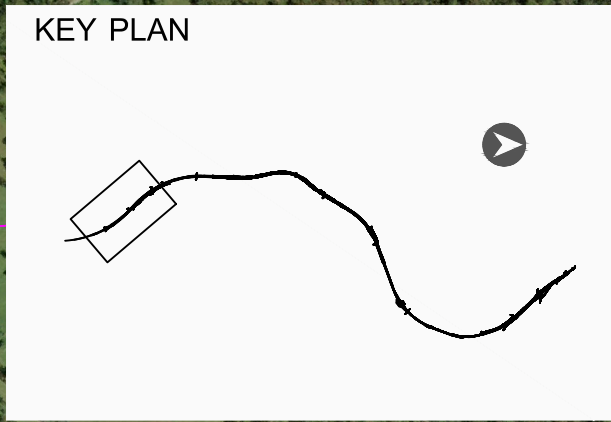
WILKINSON MURRAY

Wilkinson Murray PTY LTD
 Level 4, 272 Pacific Highway
 Crows Nest NSW 2065
 PH (02) 9437 4611
 Fax (02) 9437 4393

ACOUSTICS AND AIR

PACIFIC HIGHWAY UPGRADE
 FREDERICKTON TO EUNGAI
 NOISE CONTOURS - YEAR 2026 NIGHT
 ALIGNMENT KEY PLAN
 SHEET 1 OF 9

Company	Zone	Type	Design Lot	Sketch No.	Rev
F2E - 00G - SKT - NV003 - 0001					D1



D1	DETAILED DESIGN ISSUE	10-09-13	NG
B2	DETAILED DESIGN ISSUE	18-07-13	NG
Rev	Description	Date	Approved

Legend

- SWTC Table 4.4 Noise Receiver (RMS Treated)
- SWTC Table 4.5 Noise Receiver (RMS Treated)
- Thiess Monitoring Location
- Additional Noise Receiver
- Additional Noise Catchment Area

1:10 000 @ A3

Year 2016 Year of Opening Night Noise Contour

- L_{Aeq,9hour} 45dBA
- L_{Aeq,9hour} 50dBA
- L_{Aeq,9hour} 55dBA
- L_{Aeq,9hour} 60dBA
- L_{Aeq,9hour} 65dBA

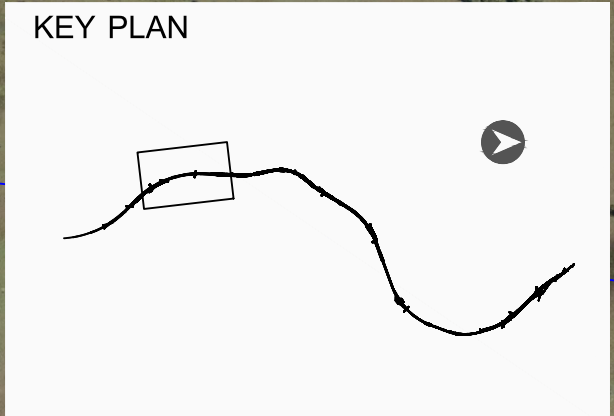
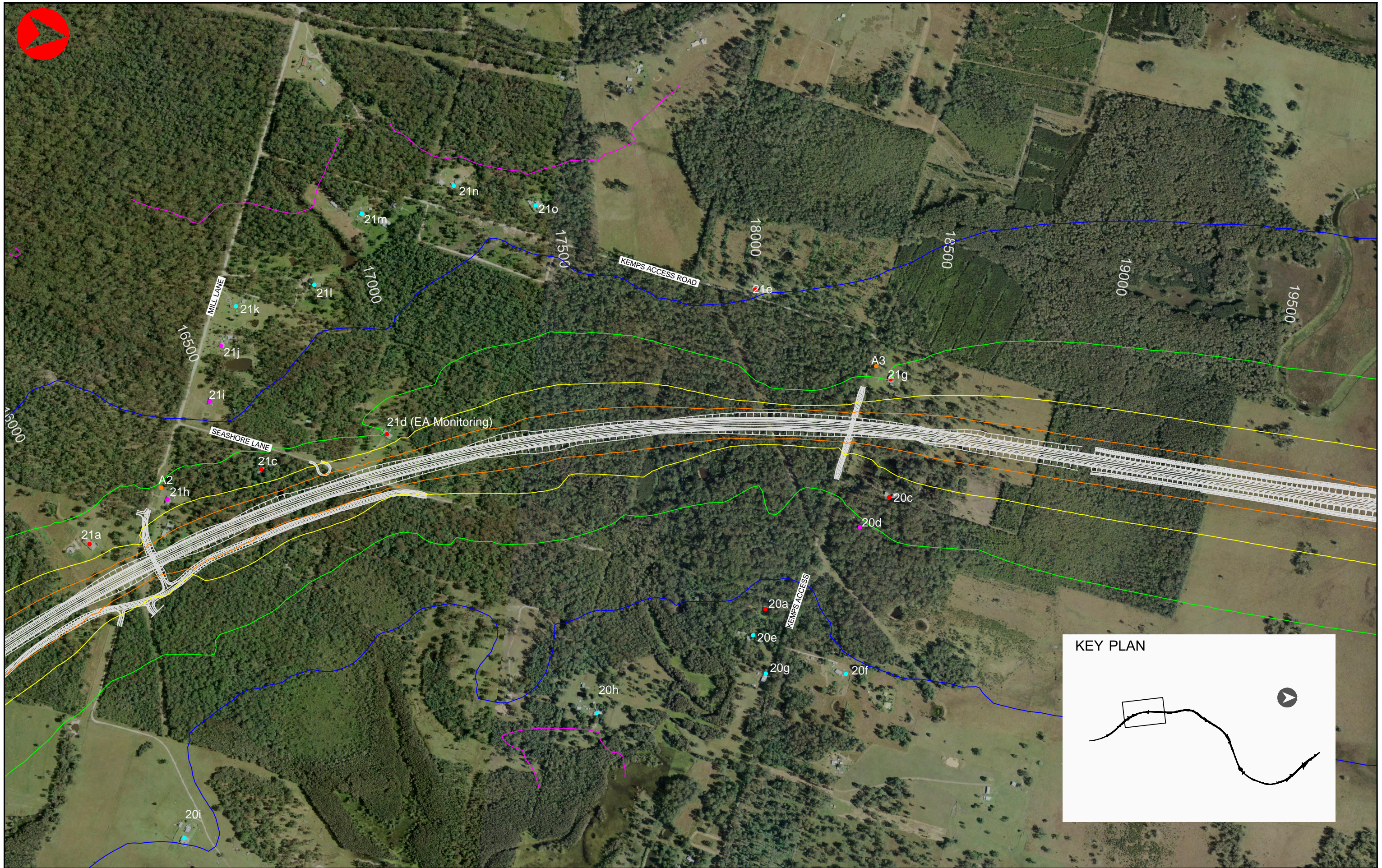
Status			
DETAILED DESIGN			
Original	A3	Drawn	JP
Coordinate System		Designed	JP
MGA ZONE 56		Date Printed	
		10 SEP 2013	
Filename: F2E-00G-SKT-NV003-0002.dwg			

WILKINSON MURRAY

Wilkinson Murray PTY LTD
Level 4, 272 Pacific Highway
Crows Nest NSW 2065
PH (02) 9437 4611
Fax (02) 9437 4393

ACOUSTICS AND AIR

PACIFIC HIGHWAY UPGRADE					
FREDERICKTON TO EUNGAI					
NOISE CONTOURS - YEAR 2016 NIGHT					
SHEET 2 OF 9					
Company	Zone	Type	Design Lot	Sketch No.	Rev
F2E	00G	SKT	NV003	0002	D1



D1	DETAILED DESIGN ISSUE	10-09-13	NG
B2	DETAILED DESIGN ISSUE	18-07-13	NG
Rev	Description	Date	Approved

Legend

- SWTC Table 4.4 Noise Receiver (RMS Treated)
- SWTC Table 4.5 Noise Receiver (RMS Treated)
- Thiess Monitoring Location
- Additional Noise Receiver
- Additional Noise Catchment Area

1:10 000 @ A3

Year 2016 Year of Opening Night Noise Contour

- L_{Aeq,9hour} 45dBA
- L_{Aeq,9hour} 50dBA
- L_{Aeq,9hour} 55dBA
- L_{Aeq,9hour} 60dBA
- L_{Aeq,9hour} 65dBA

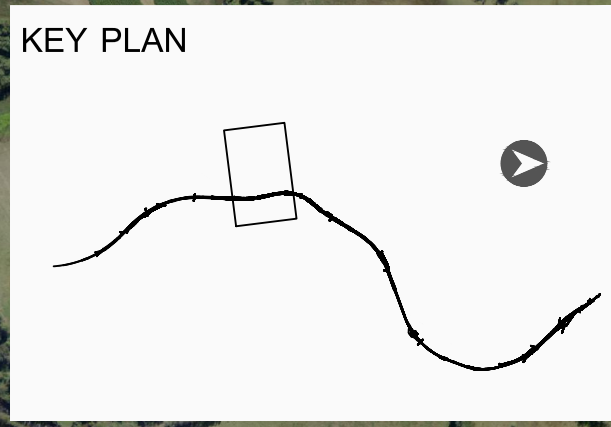
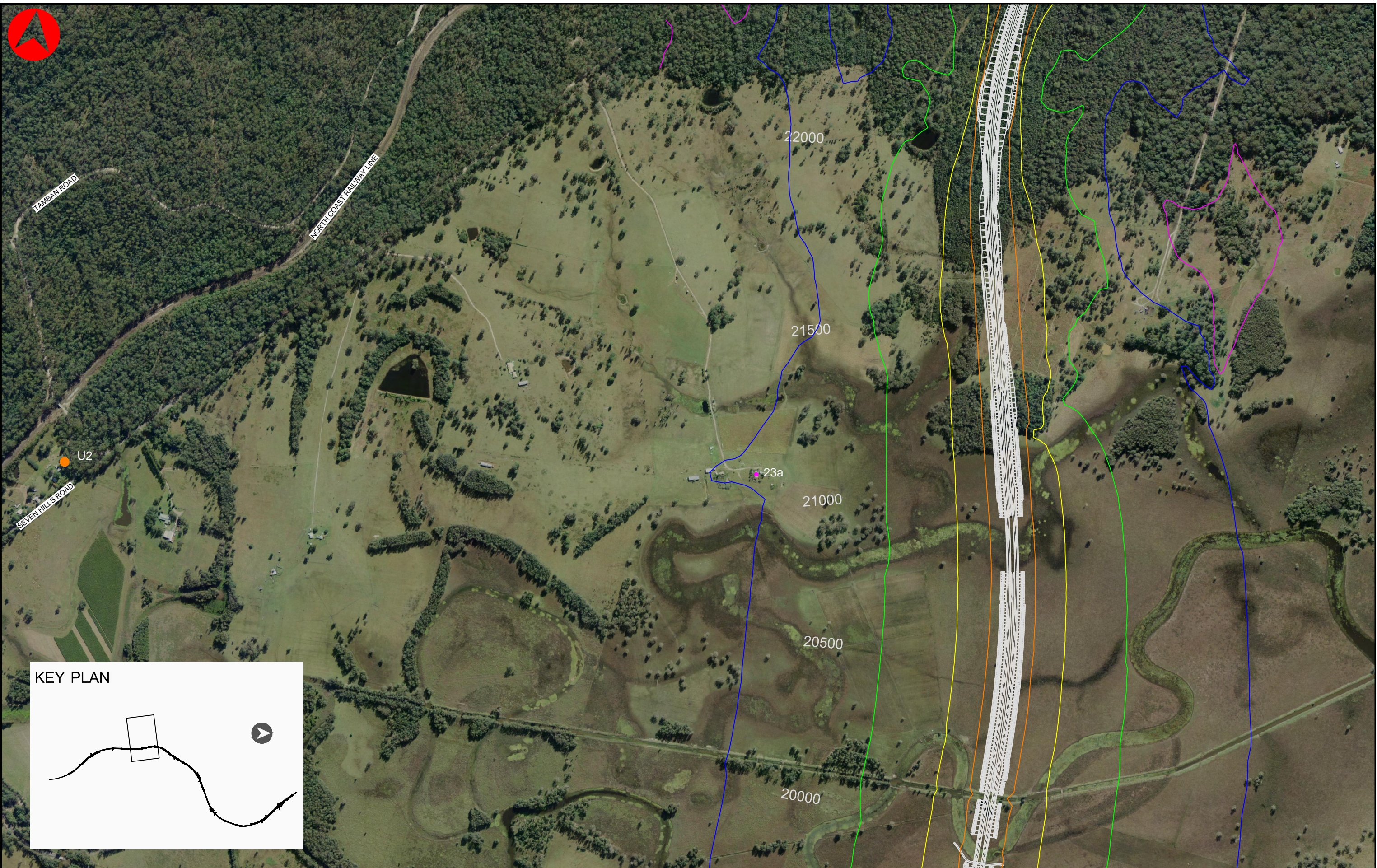
Status			
DETAILED DESIGN			
Original	A3	Drawn	JP
Coordinate System	MGA ZONE 56	Designed	JP
Date Printed		10 SEP 2013	
Filename: F2E-00G-SKT-NV003-0003.dwg			

WILKINSON MURRAY

Wilkinson Murray PTY LTD
 Level 4, 272 Pacific Highway
 Crows Nest NSW 2065
 PH (02) 9437 4611
 Fax (02) 9437 4393

ACOUSTICS AND AIR

PACIFIC HIGHWAY UPGRADE					
FREDERICKTON TO EUNGAI					
NOISE CONTOURS - YEAR 2016 NIGHT					
SHEET 3 OF 9					
Company	Zone	Type	Design Lot	Sketch No.	Rev
F2E - 00G - SKT - NV003 - 0003					D1



D1	DETAILED DESIGN ISSUE	10-09-13	NG
B2	DETAILED DESIGN ISSUE	18-07-13	NG
Rev	Description	Date	Approved

Legend

- SWTC Table 4.4 Noise Receiver (RMS Treated)
- SWTC Table 4.5 Noise Receiver (RMS Treated)
- Thiess Monitoring Location
- Additional Noise Receiver
- Additional Noise Catchment Area

1:10 000 @ A3

Year 2016 Year of Opening Night Noise Contour

- L_{Aeq,9hour} 45dBA
- L_{Aeq,9hour} 50dBA
- L_{Aeq,9hour} 55dBA
- L_{Aeq,9hour} 60dBA
- L_{Aeq,9hour} 65dBA

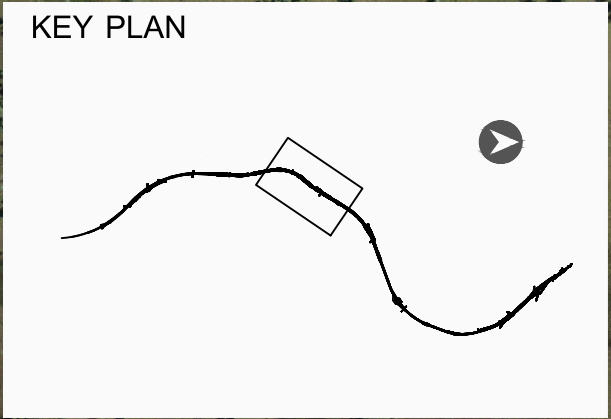
Status			
DETAILED DESIGN			
Original	A3	Drawn	JP
Coordinate System	MGA ZONE 56	Designed	JP
		Date Printed	10 SEP 2013
Filename: F2E-00G-SKT-NV003-0004.dwg			

WILKINSON MURRAY

Wilkinson Murray PTY LTD
 Level 4, 272 Pacific Highway
 Crows Nest NSW 2065
 PH (02) 9437 4611
 Fax (02) 9437 4393

ACOUSTICS AND AIR

PACIFIC HIGHWAY UPGRADE					
FREDERICKTON TO EUNGAI					
NOISE CONTOURS - YEAR 2016 NIGHT					
SHEET 4 OF 9					
Company	Zone	Type	Design Lot	Sketch No.	Rev
F2E	00G	SKT	NV003	0004	D1



D1	DETAILED DESIGN ISSUE	10-09-13	NG
B2	DETAILED DESIGN ISSUE	18-07-13	NG
Rev	Description	Date	Approved

Legend

- SWTC Table 4.4 Noise Receiver (RMS Treated)
- SWTC Table 4.5 Noise Receiver (RMS Treated)
- Thiess Monitoring Location
- Additional Noise Receiver
- Additional Noise Catchment Area

1:10 000 @ A3

Year 2016 Year of Opening Night Noise Contour

- L_{Aeq,9hour} 45dBA
- L_{Aeq,9hour} 50dBA
- L_{Aeq,9hour} 55dBA
- L_{Aeq,9hour} 60dBA
- L_{Aeq,9hour} 65dBA

Status			
DETAILED DESIGN			
Original	A3	Drawn	JP
Coordinate System	MGA ZONE 56	Designed	JP
		Date Printed	10 SEP 2013
Filename: F2E-00G-SKT-NV003-0005.dwg			

WILKINSON MURRAY

Wilkinson Murray PTY LTD
 Level 4, 272 Pacific Highway
 Crows Nest NSW 2065
 PH (02) 9437 4611
 Fax (02) 9437 4393

ACOUSTICS AND AIR

PACIFIC HIGHWAY UPGRADE					
FREDERICKTON TO EUNGAI					
NOISE CONTOURS - YEAR 2016 NIGHT					
SHEET 5 OF 9					
Company	Zone	Type	Design Lot	Sketch No.	Rev
F2E - 00G - SKT - NV003 - 0005					D1