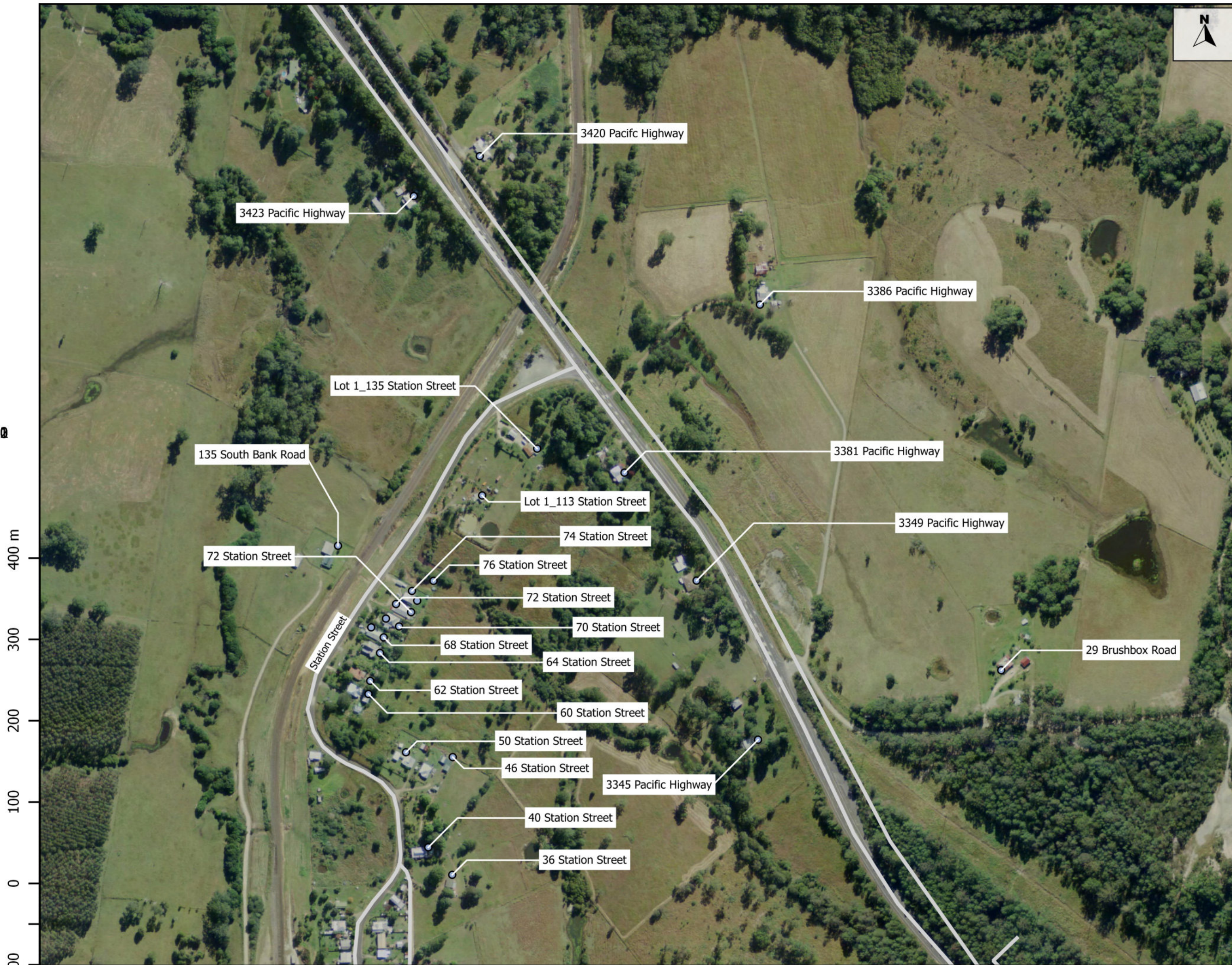


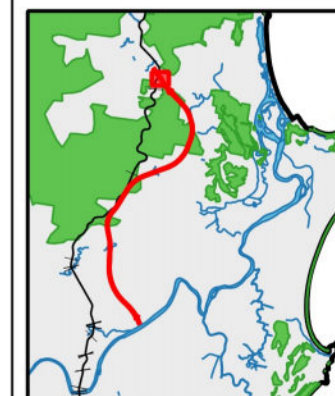

APPENDIX F

Receiver Locations



Legend

-  Highway, Streets and Local Roads
-  Noise Sensitive Receiver



PROJECT:

Frederickton to Eungai

PREPARED FOR:

CPB

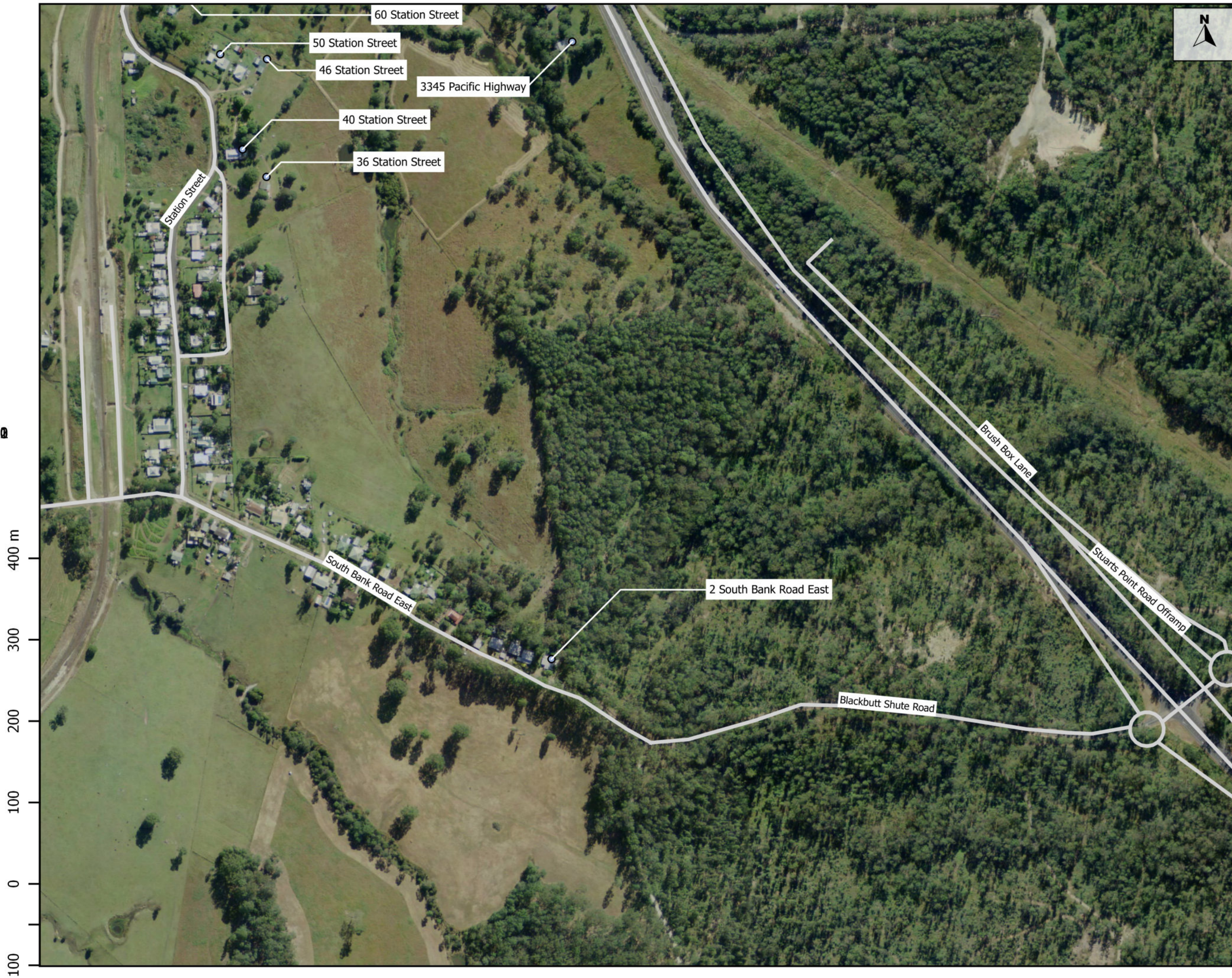
TITLE:

Locations for Noise Predictions
F2E Year of Opening Compliance

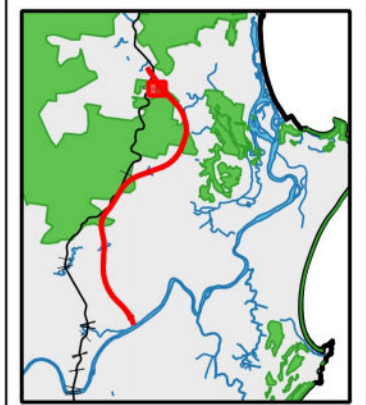
PROJECT No.:	11315	REVISION:	A
PREPARED:	TC	APPROVED:	NG
EXPORTED:	12/10/2016	SHEET SIZE:	A3

Appendix E-1

Drawing 1 of 16



- Legend
- Highway, Streets and Local Roads
 - Noise Sensitive Receiver



PROJECT:
Frederickton to Eungai

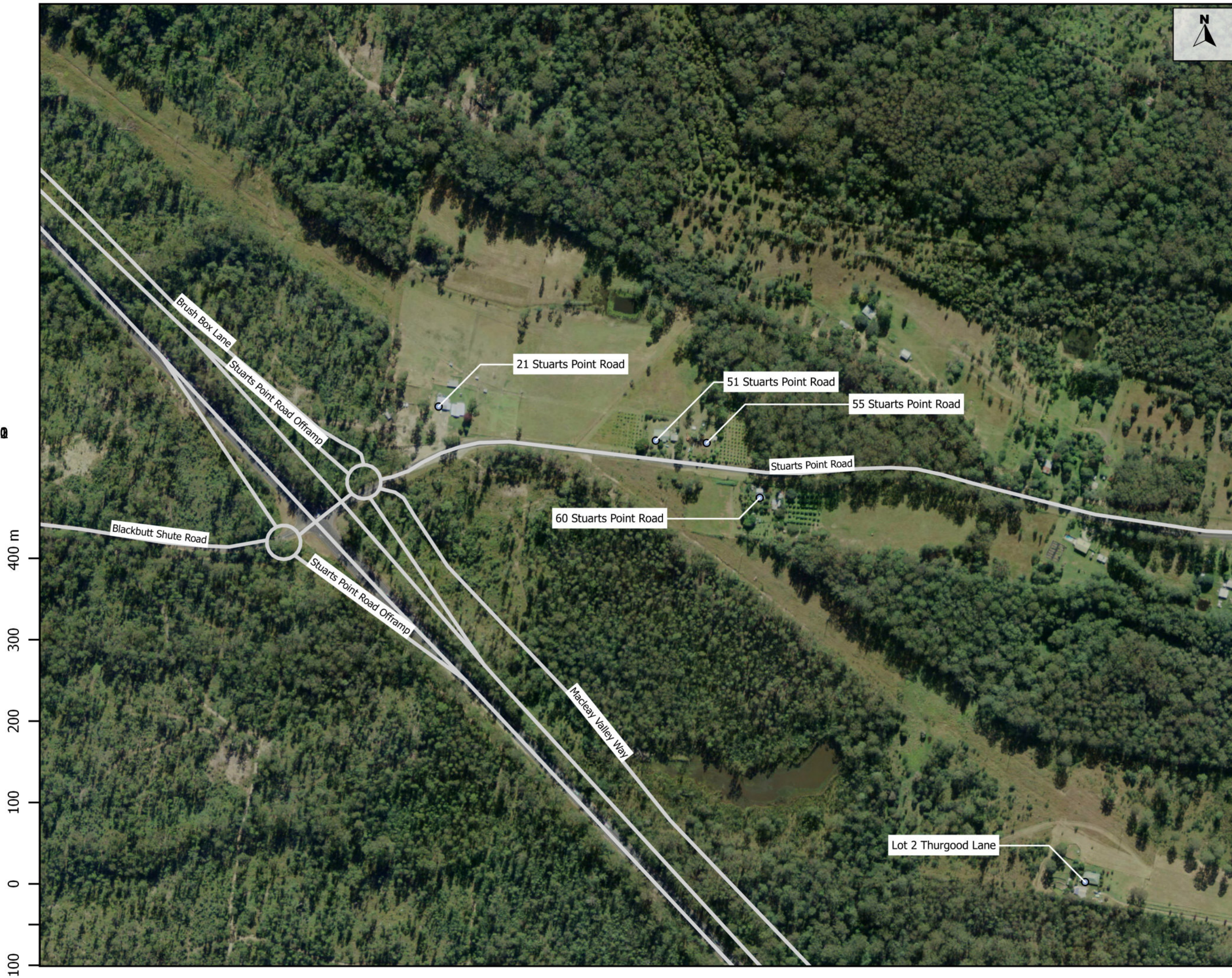
PREPARED FOR:
CPB

TITLE:
Locations for Noise Predictions
F2E Year of Opening Compliance

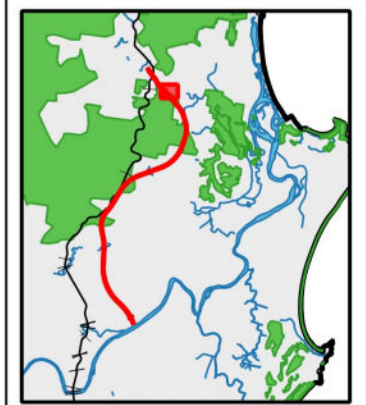
PROJECT No.:	REVISION:
11315	A
PREPARED:	APPROVED:
TC	NG
EXPORTED:	SHEET SIZE:
12/10/2016	A3

Appendix E-1
Drawing 2 of 16





- Legend
- Highway, Streets and Local Roads
 - Noise Sensitive Receiver



PROJECT:
Frederickton to Eungai

PREPARED FOR:
CPB



TITLE:
Locations for Noise Predictions
F2E Year of Opening Compliance

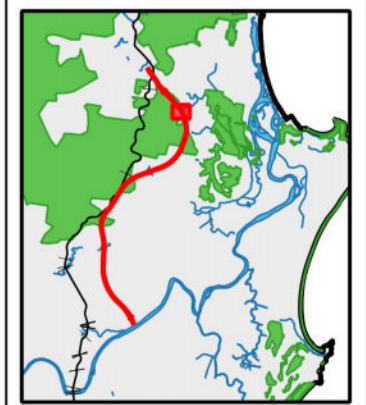
PROJECT No.:	REVISION:
11315	A
PREPARED:	APPROVED:
TC	NG
EXPORTED:	SHEET SIZE:
12/10/2016	A3

Appendix E-1
Drawing 3 of 16





- Legend
-  Highway, Streets and Local Roads
 -  Noise Sensitive Receiver



PROJECT:
Frederickton to Eungai

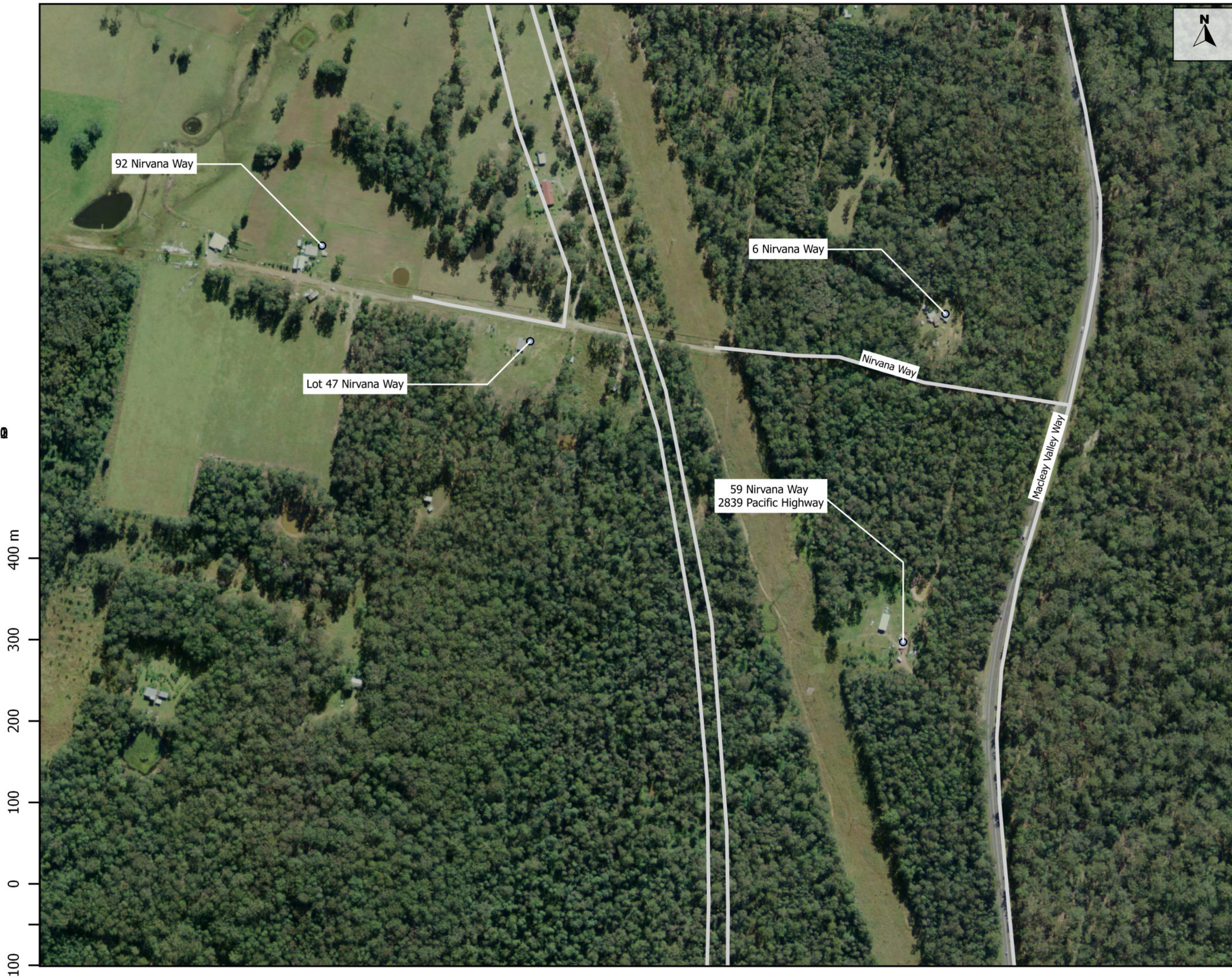
PREPARED FOR:
CPB



TITLE:
Locations for Noise Predictions
F2E Year of Opening Compliance

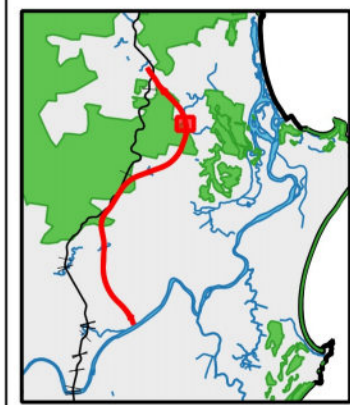
PROJECT No.:	11315	REVISION:	A
PREPARED:	TC	APPROVED:	NG
EXPORTED:	12/10/2016	SHEET SIZE:	A3

Appendix E-1
Drawing 4 of 16





- Legend
-  Highway, Streets and Local Roads
 -  Noise Sensitive Receiver



PROJECT:
Frederickton to Eungai

PREPARED FOR:
CPB

TITLE:
Locations for Noise Predictions
F2E Year of Opening Compliance

PROJECT No.:	11315	REVISION:	A
PREPARED:	TC	APPROVED:	NG
EXPORTED:	12/10/2016	SHEET SIZE:	A3

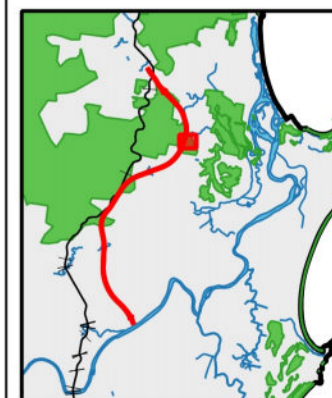
Appendix E-1
Drawing 5 of 16





Legend

-  Highway, Streets and Local Roads
-  Noise Sensitive Receiver



PROJECT:

Frederickton to Eungai

PREPARED FOR:

CPB

TITLE:

Locations for Noise Predictions
F2E Year of Opening Compliance



PROJECT No.:	11315	REVISION:	A
PREPARED:	TC	APPROVED:	NG
EXPORTED:	12/10/2016	SHEET SIZE:	A3

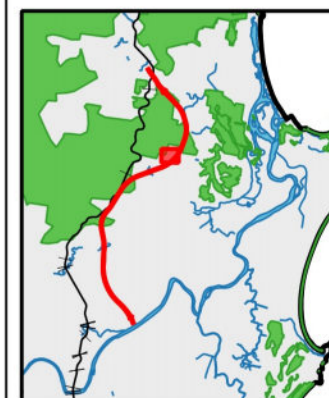
Appendix E-1

Drawing 6 of 16



Legend

-  Highway, Streets and Local Roads
-  Noise Sensitive Receiver



PROJECT:

Frederickton to Eungai

PREPARED FOR:

CPB

TITLE:

Locations for Noise Predictions
F2E Year of Opening Compliance

PROJECT No.:	11315	REVISION:	A
PREPARED:	TC	APPROVED:	NG
EXPORTED:	12/10/2016	SHEET SIZE:	A3

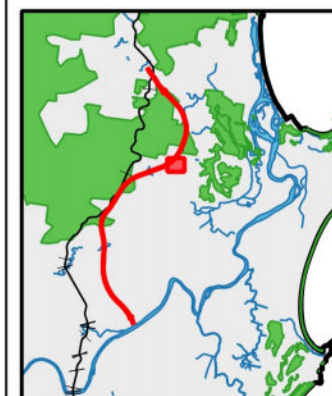
Appendix E-1

Drawing 7 of 16



Legend

-  Highway, Streets and Local Roads
-  Noise Sensitive Receiver



PROJECT:

Frederickton to Eungai

PREPARED FOR:

CPB

TITLE:

Locations for Noise Predictions
F2E Year of Opening Compliance



PROJECT No.:	11315	REVISION:	A
PREPARED:	TC	APPROVED:	NG
EXPORTED:	12/10/2016	SHEET SIZE:	A3

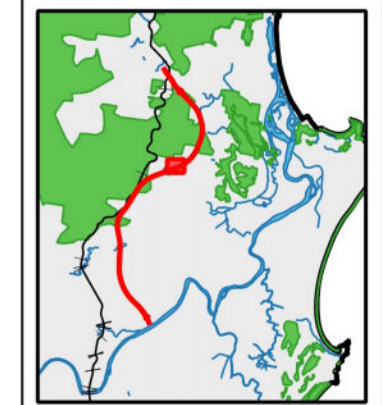
Appendix E-1

Drawing 8 of 16



Lot 42 Cooks Lane

- Legend
-  Highway, Streets and Local Roads
 -  Noise Sensitive Receiver



PROJECT:
Frederickton to Eungai

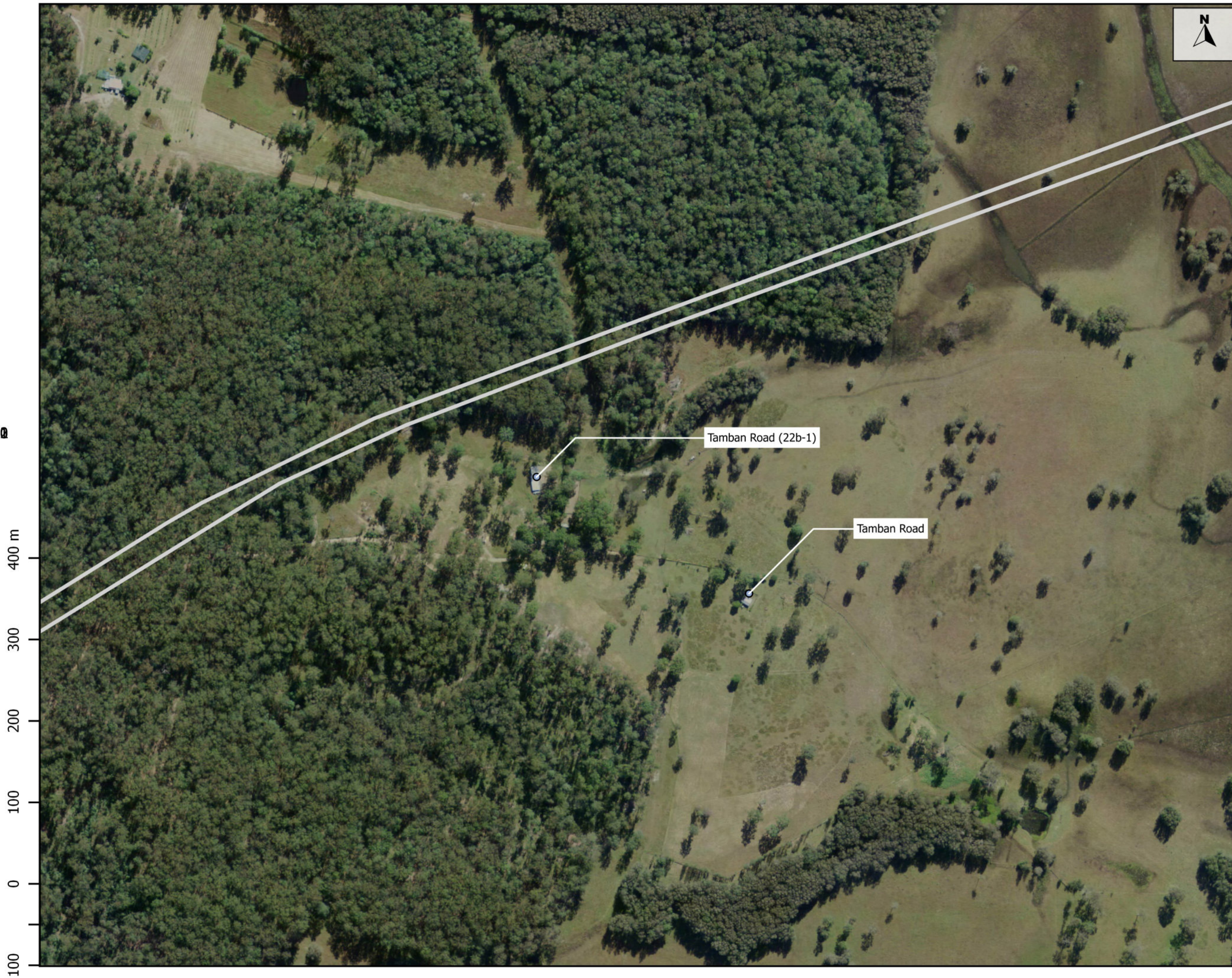
PREPARED FOR:
CPB

TITLE:
Locations for Noise Predictions
F2E Year of Opening Compliance



PROJECT No.:	11315	REVISION:	A
PREPARED:	TC	APPROVED:	NG
EXPORTED:	12/10/2016	SHEET SIZE:	A3

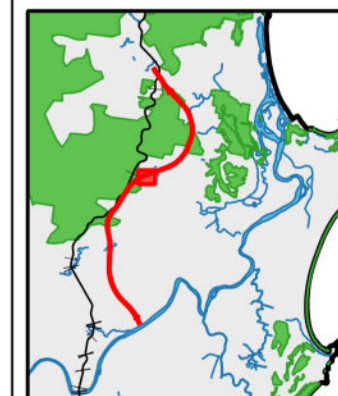
Appendix E-1
Drawing 9 of 16





Legend

-  Highway, Streets and Local Roads
-  Noise Sensitive Receiver



PROJECT:

Frederickton to Eungai

PREPARED FOR:

CPB

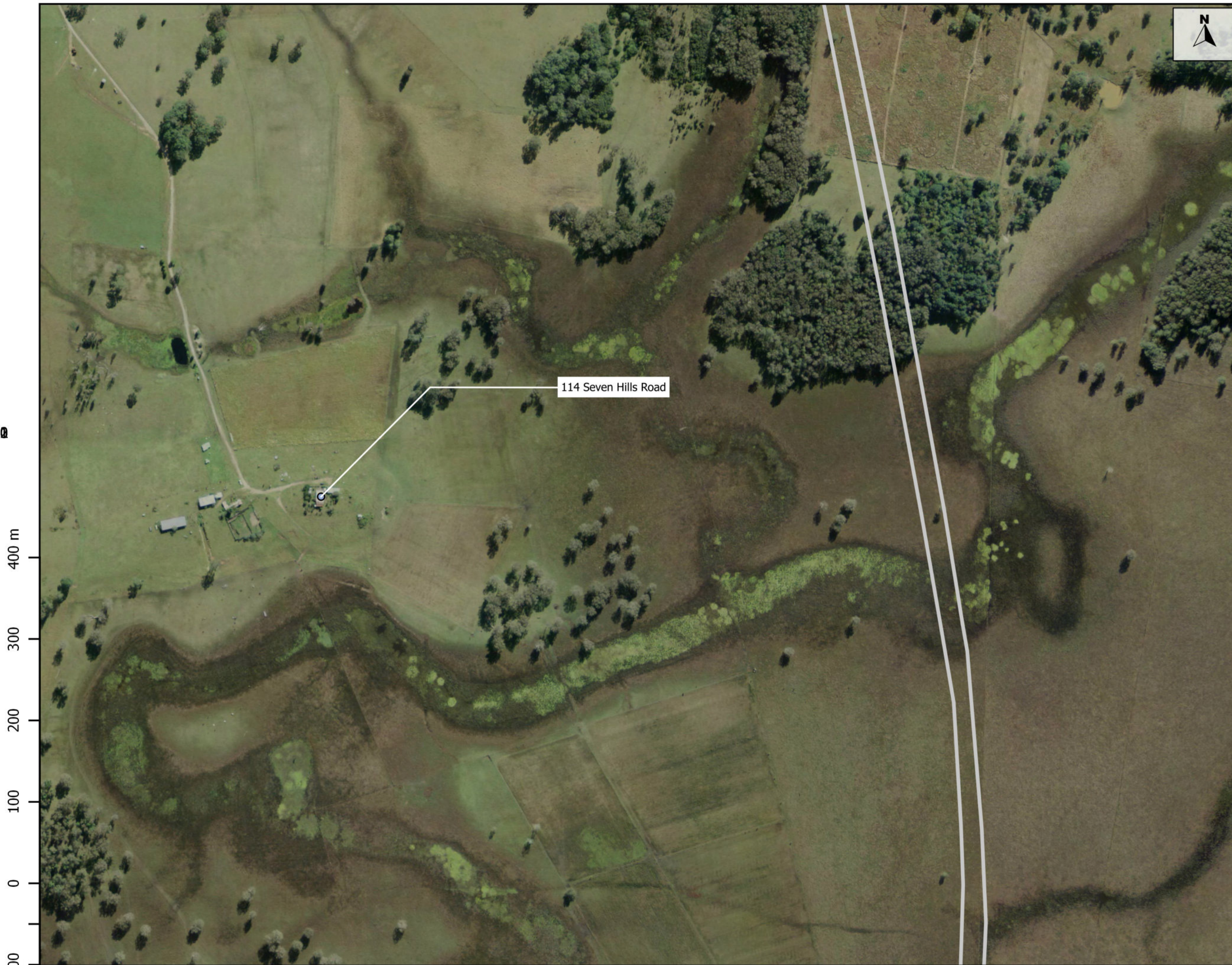
TITLE:

Locations for Noise Predictions
F2E Year of Opening Compliance

PROJECT No.:	11315	REVISION:	A
PREPARED:	TC	APPROVED:	NG
EXPORTED:	12/10/2016	SHEET SIZE:	A3

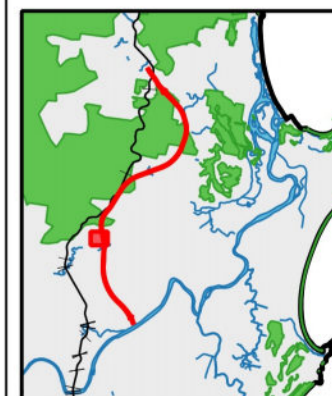
Appendix E-1

Drawing 10 of 16



Legend

-  Highway, Streets and Local Roads
-  Noise Sensitive Receiver



PROJECT:

Frederickton to Eungai

PREPARED FOR:

CPB

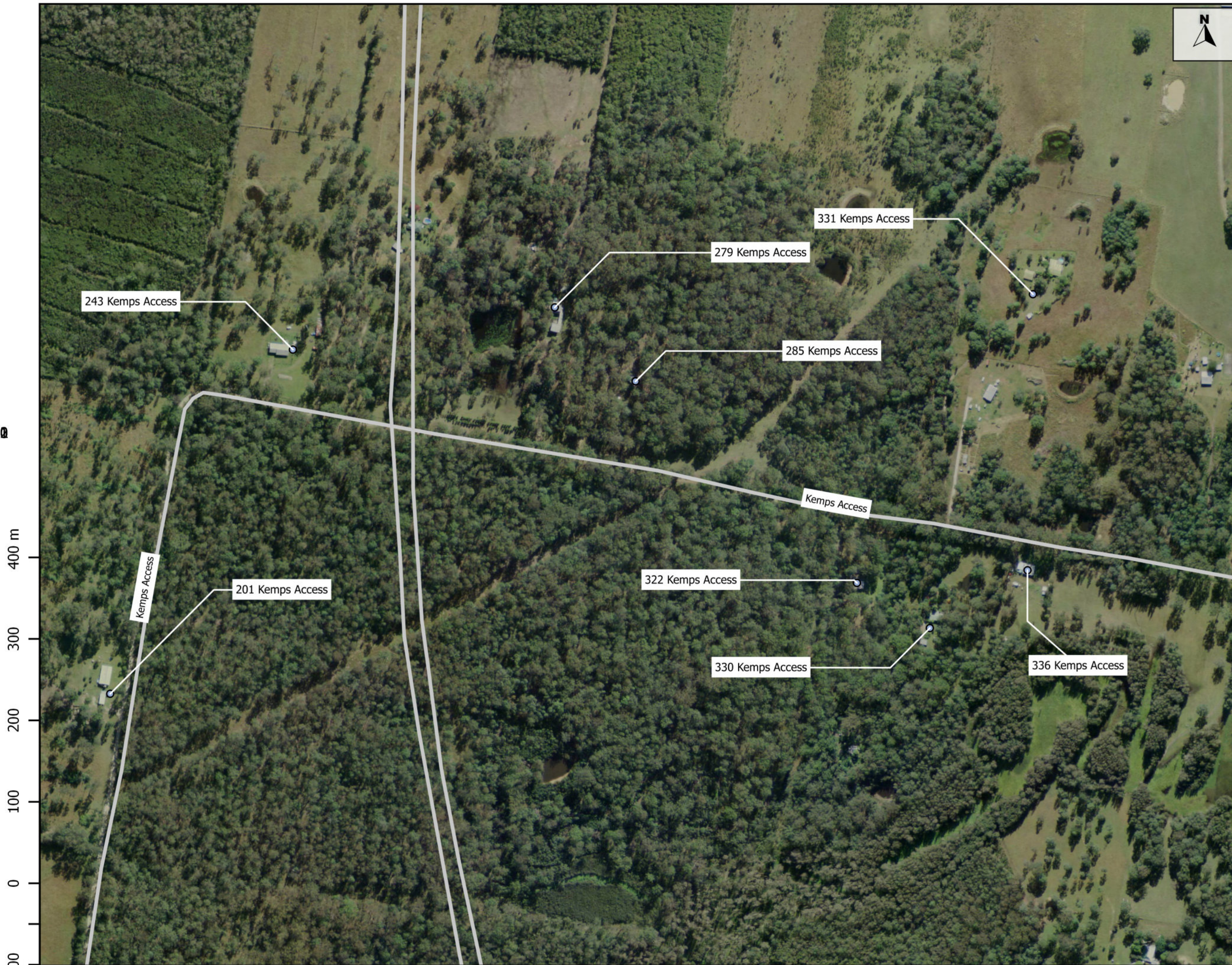
TITLE:

**Locations for Noise Predictions
F2E Year of Opening Compliance**

PROJECT No.:	REVISION:
11315	A
PREPARED:	APPROVED:
TC	NG
EXPORTED:	SHEET SIZE:
12/10/2016	A3

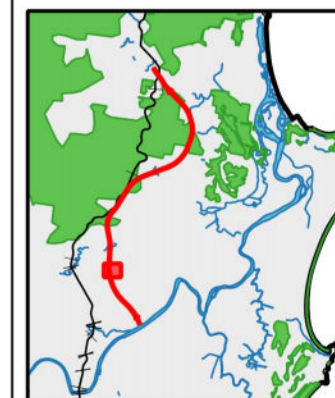
Appendix E-1

Drawing 11 of 16



Legend

- Highway, Streets and Local Roads
- Noise Sensitive Receiver



PROJECT:

Frederickton to Eungai

PREPARED FOR:

CPB

TITLE:



Locations for Noise Predictions
F2E Year of Opening Compliance

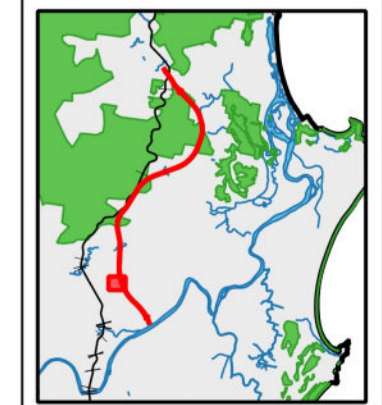
PROJECT No.:	11315	REVISION:	A
PREPARED:	TC	APPROVED:	NG
EXPORTED:	12/10/2016	SHEET SIZE:	A3

Appendix E-1

Drawing 12 of 16



- Legend
-  Highway, Streets and Local Roads
 -  Noise Sensitive Receiver



PROJECT:
Frederickton to Eungai

PREPARED FOR:
CPB

TITLE:
Locations for Noise Predictions
F2E Year of Opening Compliance

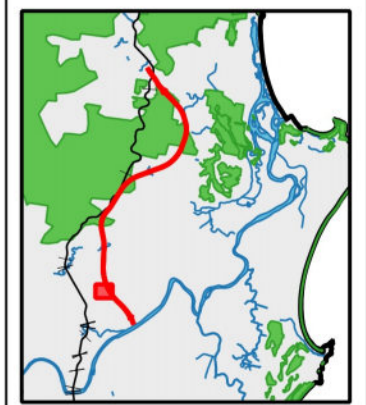
PROJECT No.:	11315	REVISION:	A
PREPARED:	TC	APPROVED:	NG
EXPORTED:	12/10/2016	SHEET SIZE:	A3

Appendix E-1
Drawing 13 of 16





- Legend
- Highway, Streets and Local Roads
 - Noise Sensitive Receiver



PROJECT:
Frederickton to Eungai

PREPARED FOR:
CPB

TITLE:
Locations for Noise Predictions
F2E Year of Opening Compliance



PROJECT No.:	11315	REVISION:	A
PREPARED:	TC	APPROVED:	NG
EXPORTED:	12/10/2016	SHEET SIZE:	A3

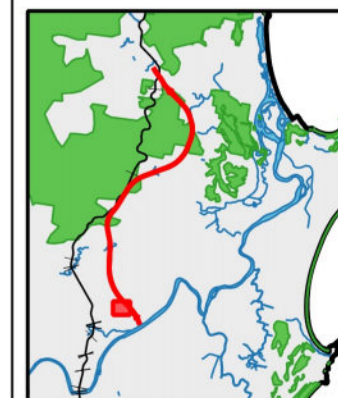
Appendix E-1
Drawing 14 of 16





Legend

-  Highway, Streets and Local Roads
-  Noise Sensitive Receiver



PROJECT:

Frederickton to Eungai

PREPARED FOR:

CPB

TITLE:

Locations for Noise Predictions
F2E Year of Opening Compliance



PROJECT No.:	REVISION:
11315	A
PREPARED:	APPROVED:
TC	NG
EXPORTED:	SHEET SIZE:
12/10/2016	A3

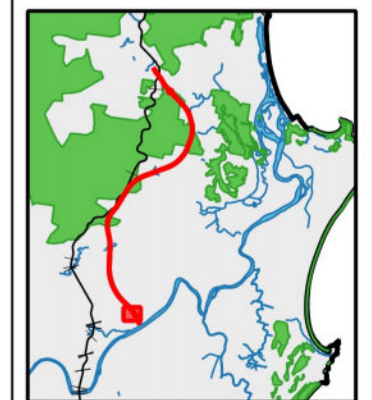
Appendix E-1

Drawing 15 of 16



Legend

-  Highway, Streets and Local Roads
-  Noise Sensitive Receiver



PROJECT:
Frederickton to Eungai

PREPARED FOR:
CPB

TITLE:
Locations for Noise Predictions
F2E Year of Opening Compliance

PROJECT No.:	11315	REVISION:	A
PREPARED:	TC	APPROVED:	NG
EXPORTED:	12/10/2016	SHEET SIZE:	A3

Appendix E-1
Drawing 16 of 16

