



Australian Government

**BUILDING OUR FUTURE**



# Kundabung to Kempsey Pacific Highway upgrade – local access and U-turn facilities

Community update – November 2015



The Australian and NSW governments are jointly funding the \$230 million Kundabung to Kempsey project. In response to community feedback the project team has been carrying out a review of the access to local roads and bus stops and the provision of U-turn facilities on the Kundabung to Kempsey project.

## IN THIS COMMUNITY UPDATE

- What's proposed
- Map of proposed design refinements
- Next steps
- Upcoming community information session

### Background

The purpose of the Pacific Highway upgrade is to provide a four lane divided road to improve safety and increase travel efficiency.

In order to complete the highway upgrade between Hexham and the Queensland border by 2020 within the current budget, Roads and Maritime has looked for opportunities to best manage the available funds to deliver a four lane divided road, while balancing the needs of the many communities along the highway. This means it is not feasible to service every community with full interchanges and local access roads in this initial stage. We seek to provide the safest access possible within the current budget.

Part of this strategy is to rationalise the number of "at grade" intersections as part of the initial highway upgrade (Class A). The building of full grade separated interchanges and fully connected service roads will be carried out at a later date (Class M).

This strategy will improve the overall road safety and traffic efficiency on the Kundabung to Kempsey section of the highway. Reducing the number of access points to the highway and removing some right turn movements across high speed traffic will significantly improve the safety of highway users and the local community.

Following community feedback last year, a review of the access and bus stop arrangements for the project has been carried out and refinements to the current design have been identified to improve access and reduce travel distances to some local roads.

The design refinements proposed in this community update balances the need to maintain road safety on the upgraded highway while ensuring the location of U-turn bays, where required, meet the needs of the local community.

This community update provides a summary of these proposed refinements.

The location of bus stops on the project is being finalised in consultation with Busways.

### Road classifications and standards – what's the difference?

**Class M** – meaning motorway standard road of national significance. Motorways are generally major roadways with a divided carriageway of two or more traffic lanes in each direction, designed to 110 km/h speed limit, where opposing traffic is separated by a median strip with controlled entries and exits.

**Class A** – routes of national significance or an important arterial road in major urban areas.

Generally, these routes have a 100km/h speed limit with some direct property access (driveways) and/or side street connections to the highway. Class A standard of roads can have a 110km/h speed limit if it meets an appropriate standard of road safety.

The Kundabung to Kempsey upgrade is being built to a Class A standard with a 110km/h speed limit. There are no immediate plans to upgrade to Class M.

### What refinements are proposed?

#### Mingaletta Road

The new design will allow northbound traffic to perform a right turn into Mingaletta Road. This will reduce the travel distance by about two kilometres from the previous design.

Motorists travelling north from Mingaletta Road will need to travel about two kilometres south to a U-turn facility. This U-turn is two kilometres north of the Yarabee Road intersection.

#### Upper Smiths Creek Road / Wharf Road

The intersection with the Pacific Highway and Upper Smiths Creek Road will be moved about 130 metres to the south and a right turning lane from the Pacific Highway will be provided for southbound travellers. This will reduce the travel distance by about 1.3 kilometres.

A right turning lane from the Pacific Highway will also be provided for northbound travellers at Wharf Road. This will reduce the travel distance by 3.7 kilometres.

A combined turnaround and bus stop facility will also be provided a short distance along both Upper Smiths Creek Road and Wharf Road.

Motorists travelling south from Upper Smiths Creek Road will be able to turn left onto the highway, make a right turn into Wharf Rd, use the new turnaround facility and then turn left onto the highway. Alternatively motorists can travel 2.1 kilometres north and utilise the new Kundabung interchange to travel south.

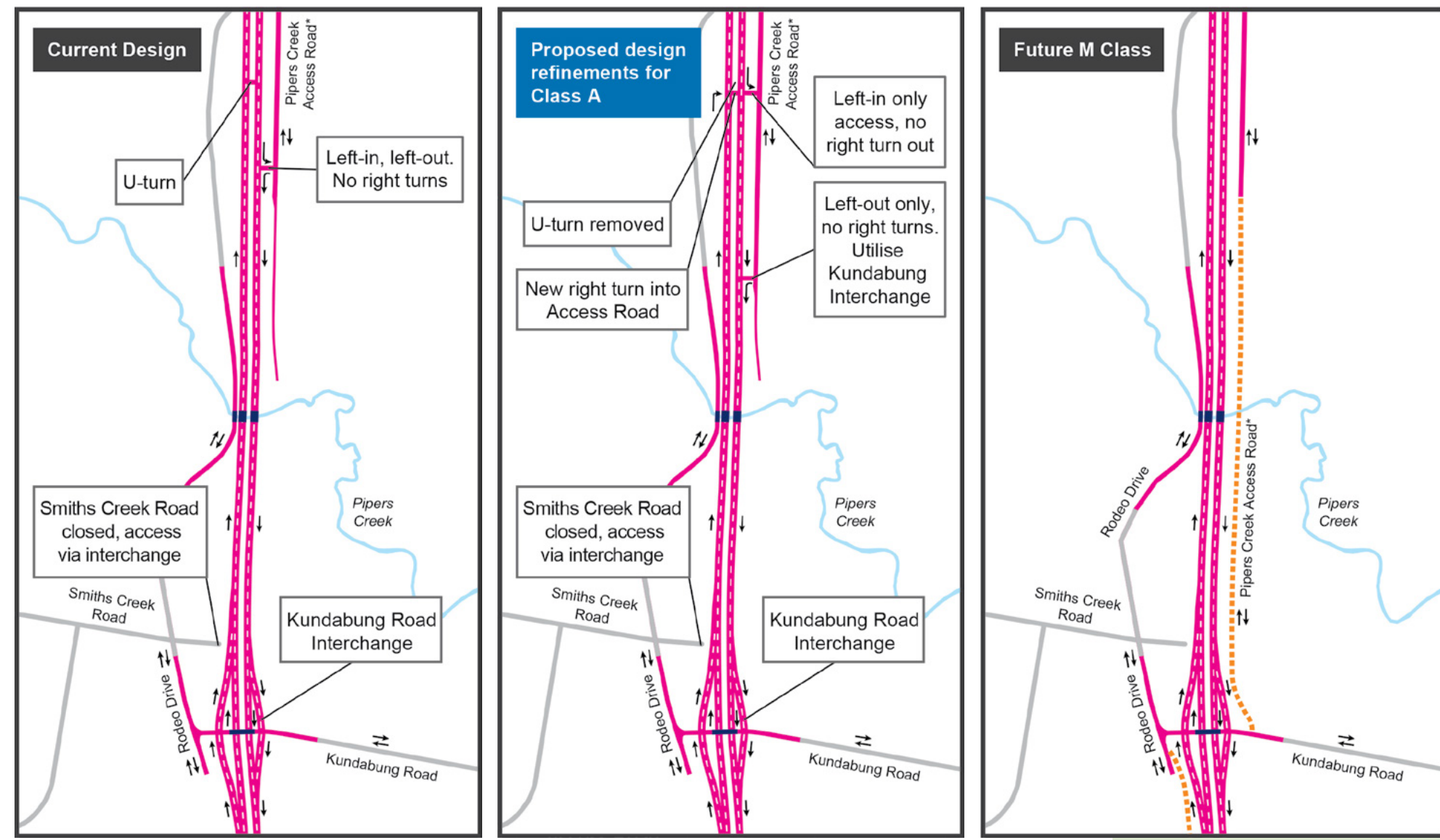
# Map of proposed design refinements

**Legend**

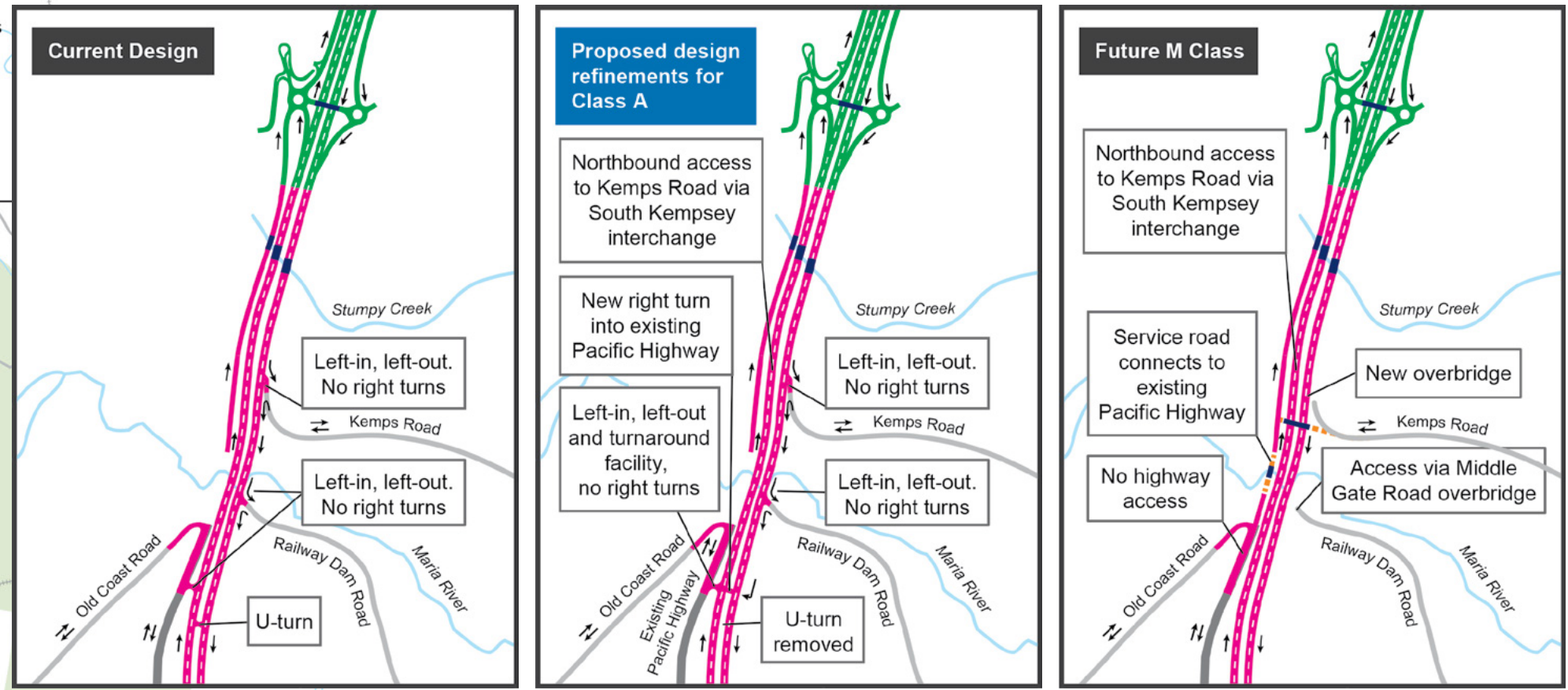
- Existing Pacific Highway
- Existing local roads
- Upgrade work
- Future M Class
- Bridges
- Railway
- Rivers/creeks

0 0.5 1.0 1.5km

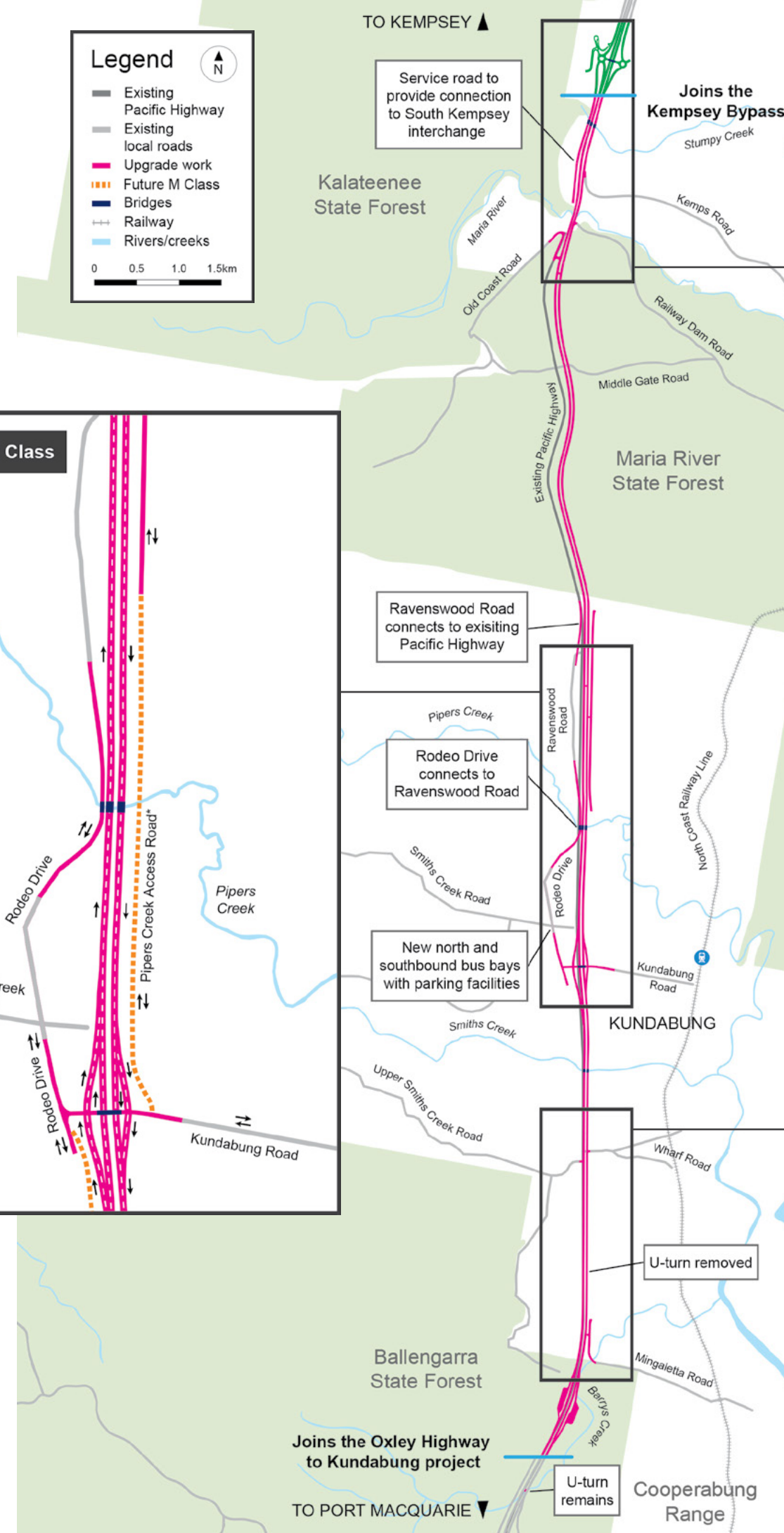
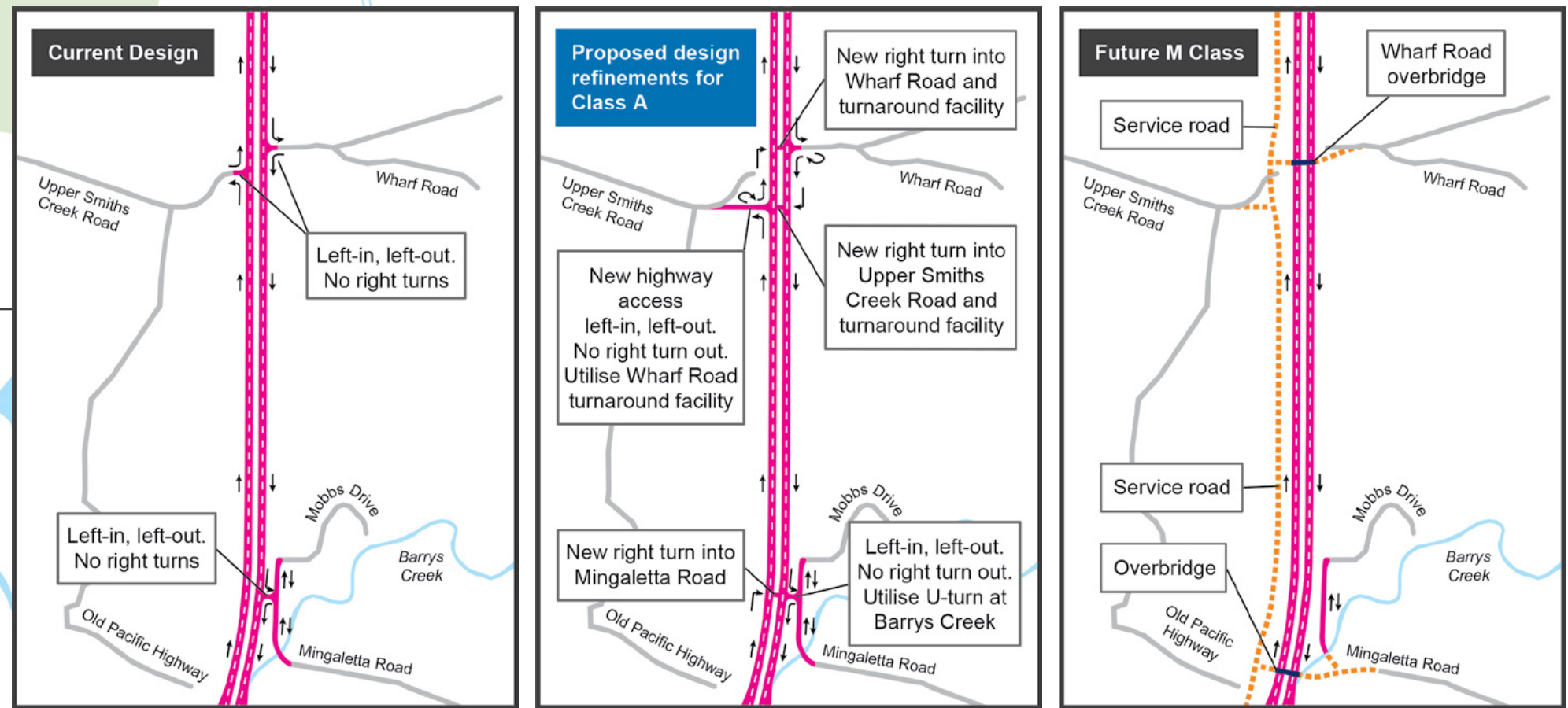
## Pipers Creek Access Road\*, Kundabung Road and Rodeo Drive



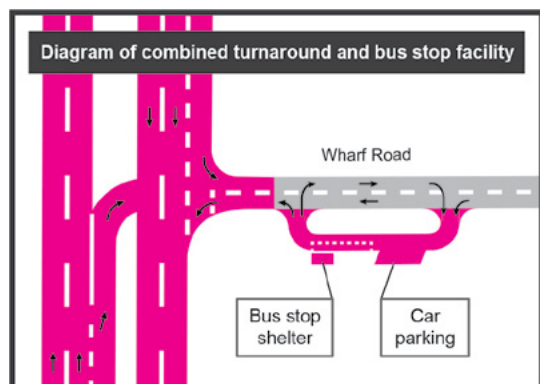
## Kemps Road and Old Coast Road



## Wharf Road, Upper Smiths Creek Road and Mingaletta Road



Motorists travelling north from Wharf Road will be able to turn left onto the highway, make a right turn into Upper Smiths Creek Road, use the new turnaround facility and then turn left onto the highway.



### Pipers Creek Access Road\*

The new design will allow northbound traffic to perform a right turn into Pipers Creek Access Road. This will reduce the travel distance by about 1.4 kilometres from the previous design.

A new left turn out of Pipers Creek Access Road (new access road yet to be named) will be built about 500 metres to the south of the entry to the access road.

Motorists wanting to travel north will need to travel south about two kilometres and utilise the new Kundabung interchange to travel north.

### Old Coast Road and existing Pacific Highway

The new design will allow southbound traffic to perform a right turn into the existing Pacific Highway (new service road yet to be named) and Old Coast Road. This reduces the travel distance by about 300 metres from the previous design.

Motorists wanting to travel south from Old Coast Road will be able to travel along the existing Pacific Highway to Kundabung Interchange to join the upgrade, or alternatively travel 2.1 kilometres north to utilise the South Kempsey interchange to travel south.

### Kemps Roads and Railway Dam Road

Left in / left out only access will be retained for these roads as there are U-turn facilities within reasonable travel distances both north and south of the intersections.

Motorists wanting to travel north from either Kems Road or Railway Dam Road will travel south to the Old Coast Road/ existing Pacific Highway access and use the new turnaround facility before turning left back onto the highway.

Northbound motorists will access Kems Road and Railway Dam Road by travelling north to the South Kempsey interchange (1.1km and 1.8 km respectively), performing a U-turn and accessing the roads via the southbound carriageway.

## Naming of local roads

The naming of local roads being built or existing local roads being adjusted as part of the project will be determined by Kempsey Shire Council in consultation with stakeholders and the local community.

The naming of new roads in this community update are purely to describe the location and are not the final road names.

\*This road has yet to be named. Pipers Creek Access Road is used as a reference point and is not the future road name.

## What happens next?

You are welcome to provide your feedback on the proposed design refinements. Please send your feedback to the address below by Friday 11 December 2015.

The next step is to consider any further feedback received from the community, and implement these proposed refinements to the design.

## Community information session

You are invited to a community information session to find out more and ask questions about these access refinements.

There will also be additional information about adjustments to the bus stop arrangements for the project.

There will also be information about upcoming construction activities taking place and speak to the project team.

This is a drop-in session and there will not be any formal presentations. Please feel free to attend at anytime.


**When:** Thursday 26 November 2015

**Time:** 3.30 – 7.30pm


**Where:** Kundabung Hall

## For more information

For more information about the project please contact the project team by:

 1800 653 092 (during business hours)

 [pacific.highway@rms.nsw.gov.au](mailto:pacific.highway@rms.nsw.gov.au)

 Kundabung to Kempsey Project  
Pacific Highway Office  
21 Prince Street, Grafton, NSW 2460

More information is also available at [rms.nsw.gov.au/pacific](http://rms.nsw.gov.au/pacific)

If you need help understanding this information, please contact the Translating and Interpreting Service on **131 450** and ask them to call us on **1800 653 092**.