



Transport  
Roads & Maritime  
Services

# Pacific Highway Upgrade



Jim Campbell  
Pacific Highway Office

# Briefing Outline



Transport  
Roads & Maritime  
Services

Highway upgrade overview

Outcomes so far

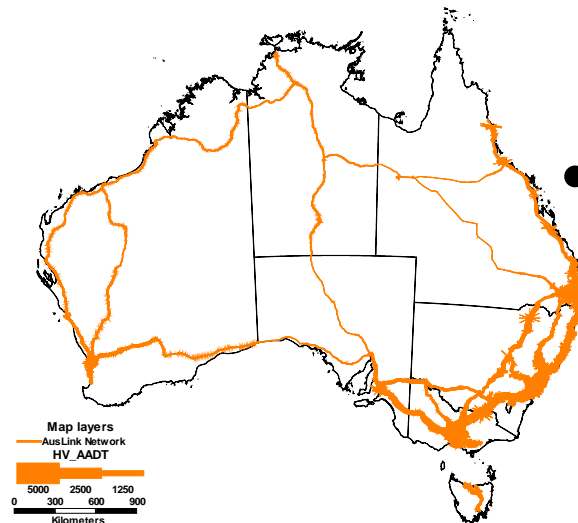
Status of current projects

What's coming up

Questions



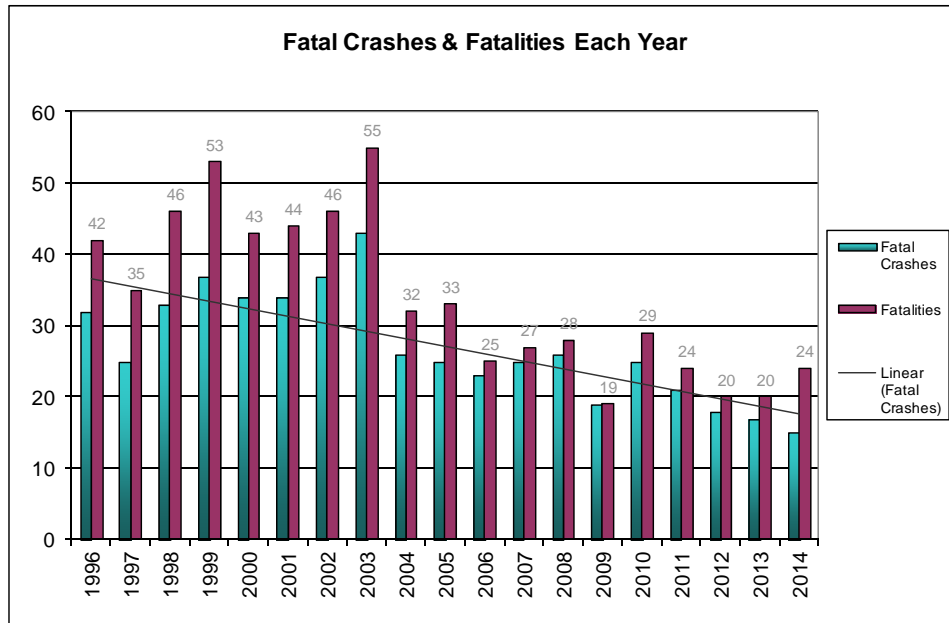
# Why are we upgrading?



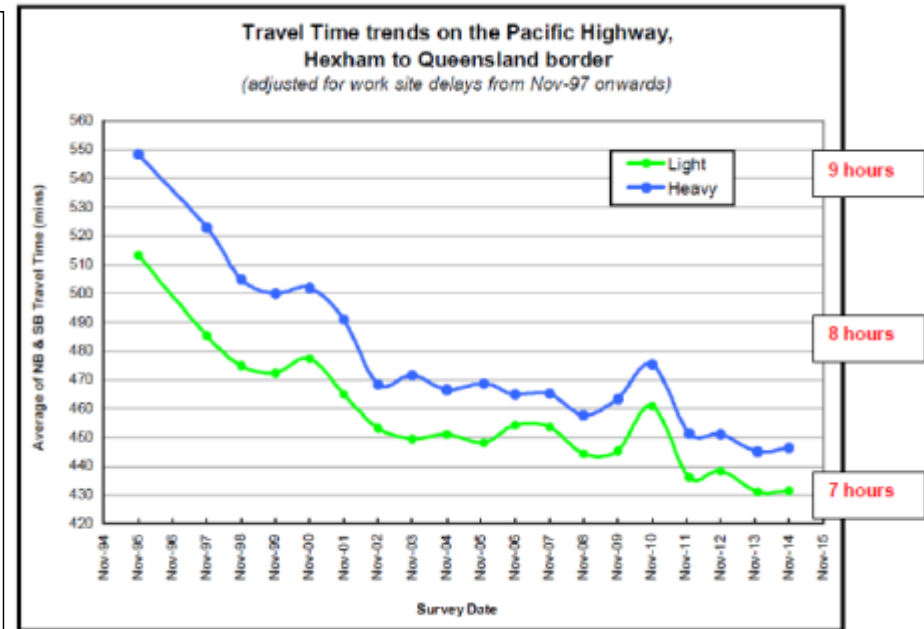
- High no. & severity of crashes on a two-lane highway
- Part of the National Freight Network
- High growth along east coast of Australia

# Overview

## Significant reduction in fatal crashes



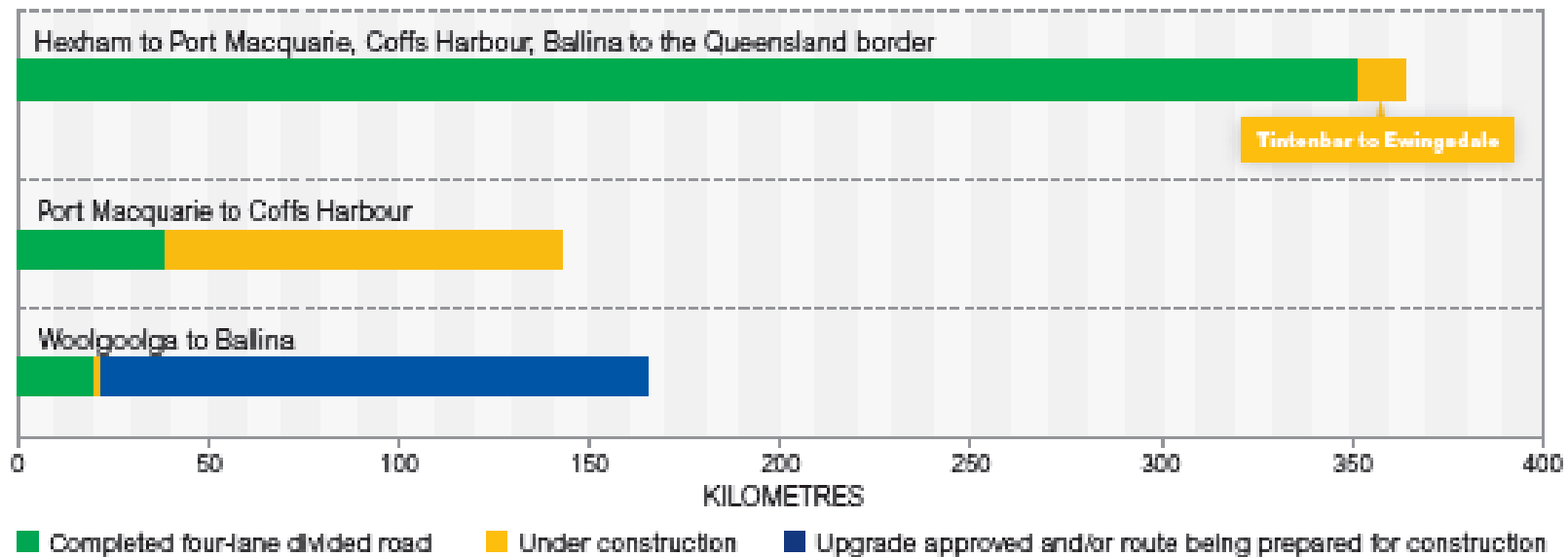
## Significant reduction in travel time



★ Additional 45 minutes by 2020

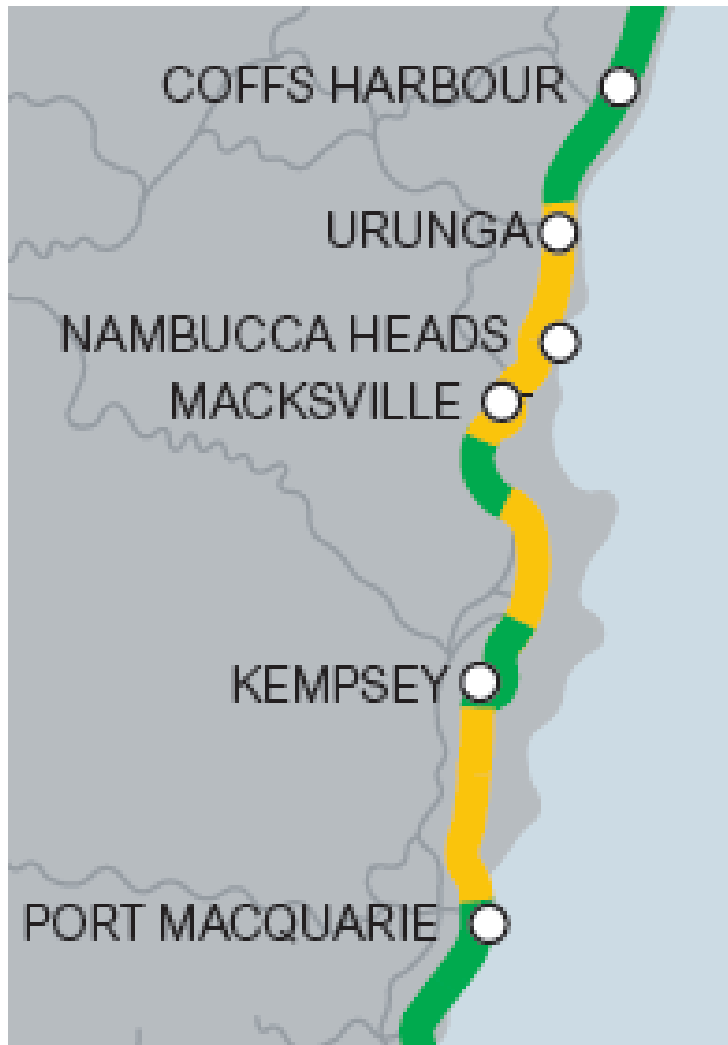
# Outcomes so far

Four-lane divided road status



397 km of the final 657 km length is open to traffic (60%)  
149 km are in construction (19%)  
The remaining is being procured.

# Port Macquarie to Coffs Harbour



- 105 km of highway upgrade under construction (5 major contracts)
  - Oxley Highway to Kundabung
  - Kundabung to Kempsey
  - Frederickton to Eungai
  - Warrell Creek to Nambucca Heads
  - Nambucca Heads to Urunga
- \$ 3.3 Billion
- Progressive opening 2016 to late 2017
- Key facts:
  - 13 million m<sup>3</sup> earthworks
  - 107 structures including crossings of Wilsons, Hastings, Warrell Creek, Nambucca and Kalang Rivers
  - 13 Interchanges

# Oxley Highway to Kundabung

Estimated Cost	\$820M	Delivery	Design & Construct
Construction	Dec 2014 - 2017	Contractor	Lend Lease



# Kundabung to Kempsey

Estimated Cost	\$230M	Delivery	Construct Only
Construction	Dec 2014 - 2017	Contractor	McConnell Dowell OHL JV





# Frederickton to Eungai

Estimated Cost	\$675M	Delivery	Design & Construct
Construction	Aug 2013 - 2016	Contractor	Thiess



# Warrell Creek to Urunga

Estimated Cost	\$830M	Delivery	Design & Construct
Construction	Late 2014 - 2017	Contractor	Acciona Ferrovial JV

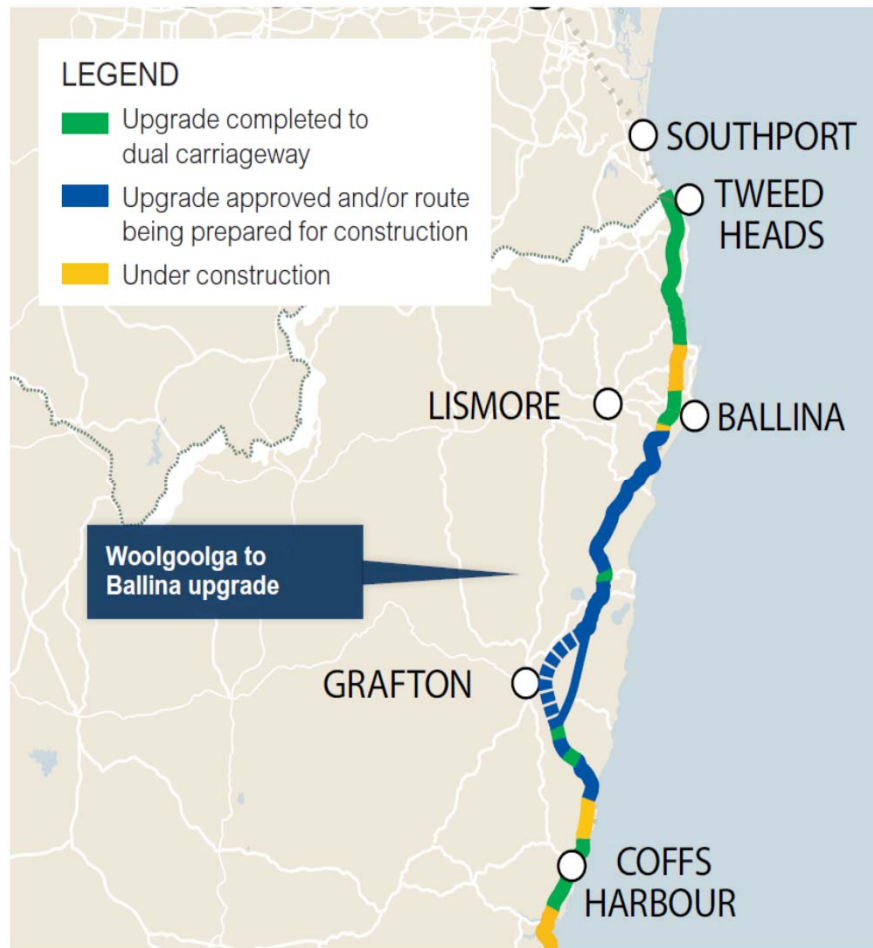


# Nambucca Heads to Urunga

Estimated Cost	\$780M	Delivery	Design & Construct
Construction	Nov 2013 - 2016	Contractor	Lend Lease



# Woolgoolga to Ballina



- 155 km of highway upgrade to achieve dual carriageway link
- Well advanced in being prepared for construction:
  - obtained project approval
  - acquired 90% of properties
  - investigations well advanced
  - enabling/ early works being progressed
- Over \$4 billion investment
- Delivery partner has been engaged to assist Roads and Maritime in overall delivery

# Woolgoolga to Ballina

- Woolgoolga to Halfway Creek Construction Environmental Management Plans approved and started main construction May 2015
- Halfway Creek to Glenugie Construction Environmental Management Plans approved June - start main construction July 2015
- Wave 1 & 2 soft soil treatment sites awarded
- Bridge over Clarence River at Harwood design and build contract expect to invite short list of contractors to tender in July 2015
- Utility adjustments are underway
- Working on Aboriginal salvage
- Key issue is the impact on koala habitat around Wardell
- Preferred Delivery Partner announced April 2015.
- Target opening by 2020

# More information



Transport  
Roads & Maritime  
Services

For overall updated information  
monthly achievement reports  
6 monthly report cards

Pacific Highway Office  
1800 653 092  
or  
6640 1000

[www.rms.nsw.gov.au/projects](http://www.rms.nsw.gov.au/projects)

