



NAMBUCCA HEADS TO URUNGA PACIFIC HIGHWAY UPGRADE

Wednesday 8 July 2015

Urunga Mylestom Chamber of Commerce

Agenda



- Pacific Highway overview (RMS)
- Construction update – Nambucca Heads to Urunga
- Question and Answers

Project overview



- 22 kilometres of four-lane divided highway
- 37 bridges
 - 14 twin bridges
 - Six highway overpasses
- Interchanges
 - New interchanges at Ballards Road and Nambucca Heads
 - Upgrade interchange at Waterfall Way



Project overview



- About 200 pieces of plant on site
- 3.8 million cubic metres of earth to move
- 180,000 cubic metres of concrete pavement to lay down
- Average of 750 people on site each month

People overview

- Average of 750 people on site each month
- 129 traineeships / apprenticeships provided on the job (training at North Coast TAFE)
- At end of May, 155 people who identified as Aboriginal or Torres Strait Islander heritage had been inducted
- 11 Indigenous trainees have completed their Civil Construction training.

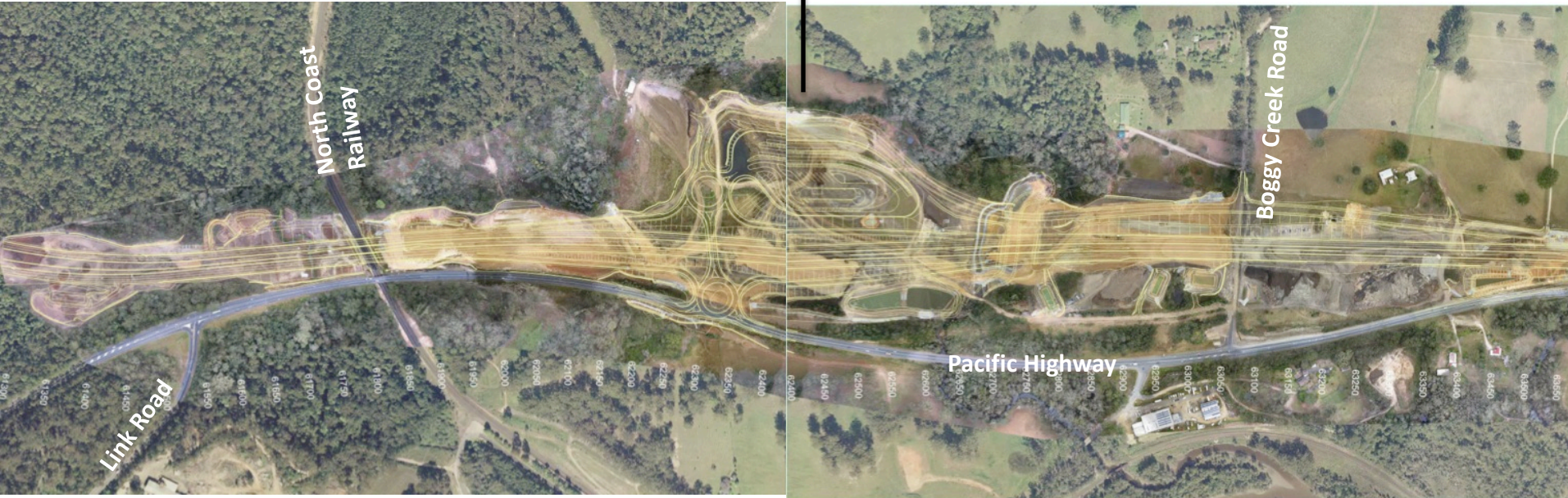
Construction update



Transport
Roads & Maritime
Services

Nambucca Heads interchange
Potential rest area or highway service centre

Boggy Creek Road
New local road will connect
Boggy Creek Road to Nambucca
Heads interchange



Photos from the field



Transport
Roads & Maritime
Services

**Bridge over North
Coast rail line, May
2015**



Photos from the field



Transport
Roads & Maritime
Services



Boggy Creek, May 2015

Construction update



Transport
Roads & Maritime
Services

Valla Road

Maintain intersection with existing Pacific Highway via an underpass. Valla Road users will travel beneath the upgrade.

Deep Creek Twin highway bridges



Photos from the field



Transport
Roads & Maritime
Services

**Deep Creek bridge, May
2015**



Construction update



Transport
Roads & Maritime
Services

Deep Creek Road

New local road to connect Deep Creek Road to East West Road.

East West Road

Maintain intersection with existing Pacific Highway via a new overbridge.



Photos from the field



Work has started on the bridge to take traffic on East West Road over the new highway. May 2015

Burkes Lane

A new local road will connect Burkes Lane to East West Road.



Photos from the field



Transport
Roads & Maritime
Services



Looking south along
the new local access
road between Burkes
Lane and East West
Road, April 2015

Construction update



Transport
Roads & Maritime
Services

Ballards Road

A full interchange and upgrade to intersection with Pacific Highway



Photos from the field



Transport
Roads & Maritime
Services

**Bridge for Ballards
Road traffic over the
new highway, May 2015**



Photos from the field



Transport
Roads & Maritime
Services



Night work to prepare to move highway traffic near Ballards Road interchange, May 2015

Construction update



Newry State Forest

Major cut. 'Winning' material from the cut that is being used on the project
(bridge abutments, drainage, smz etc)



Photos from the field



Transport
Roads & Maritime
Services

Newry State Forest quarry,
May 2015



Construction update



Martells Road
A new bridge over the upgrade.



Photos from the field



Transport
Roads & Maritime
Services



**Martells Road Bridge,
open to traffic in June
2015, side track will be
removed**

Construction update



Kalang River

Permanent twin bridges over the Kalang River.
A temporary bridge has been built to assist with construction.



Local Access
Road
Highway
overpass
bridge

Photos from the field



Transport
Roads & Maritime
Services

New bridge over Kalang River, January 2015



Photos from the field



Transport
Roads & Maritime
Services



Temporary bridge being removed from Kalang River, May 2015

Construction update



Transport
Roads & Maritime
Services



Photos from the field



Transport
Roads & Maritime
Services

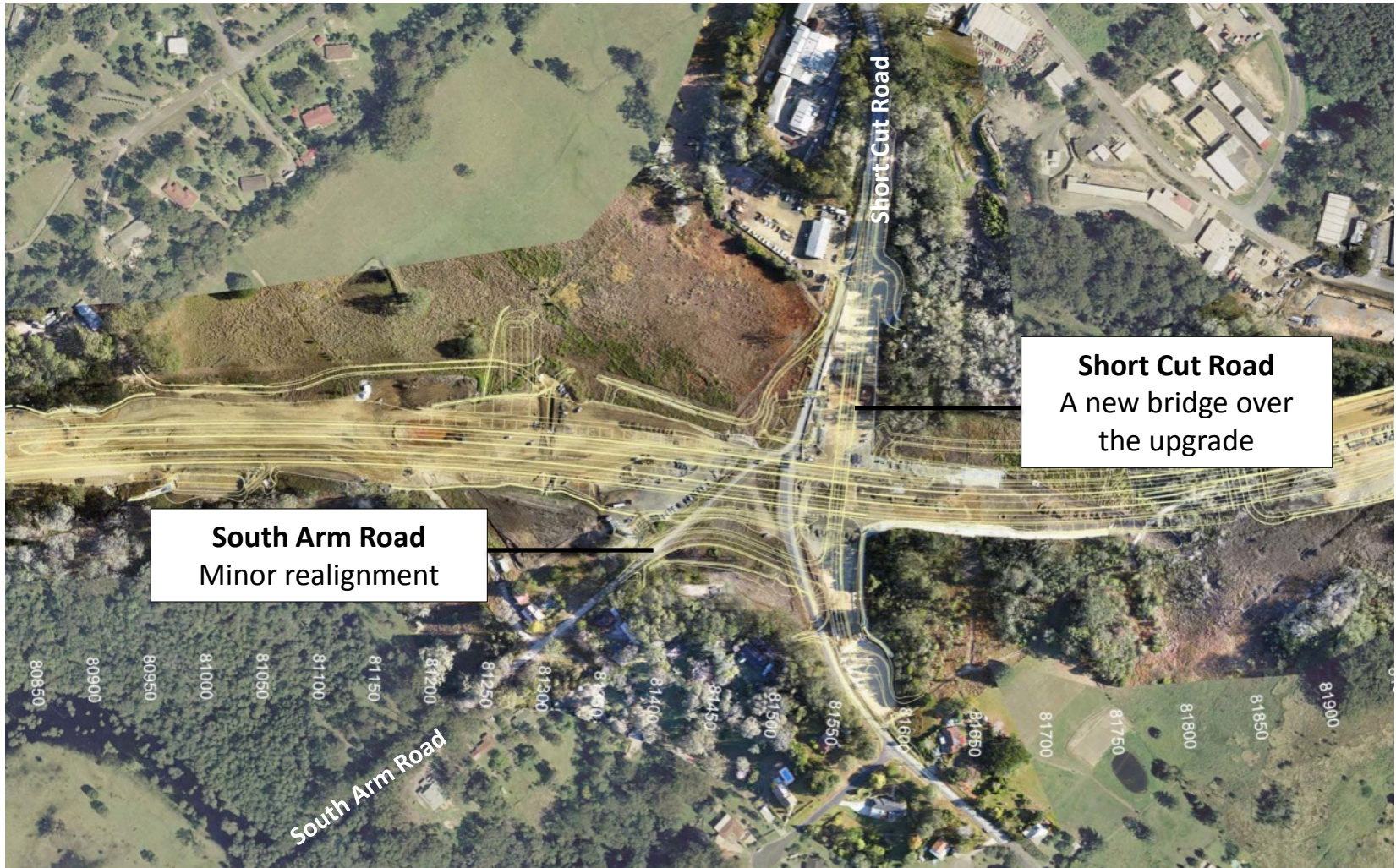


Looking south to Waterfall
Way interchange, April
2015

Construction update



Transport
Roads & Maritime
Services



South Arm Road
Minor realignment

Short Cut Road
A new bridge over
the upgrade

Photos from the field



Transport
Roads & Maritime
Services



**Short Cut
Road
opened to
traffic in
May 2015**

Construction update



Transport
Roads & Maritime
Services



Waterfall Way interchange



Waterfall Way
interchange,
April 2015



What's coming up?



- Complete bulk earthworks
- Continue paving across the site
- Open access to East West Road bridge
- Open waterway of Kalang River
- Continue work on Waterfall Way interchange
- Open access to South Arm Road bridge
- Complete Ballards Road intersection with Pacific Highway



Questions?