



Transport
Roads & Maritime
Services

Nambucca Heads to Urunga Pacific Highway upgrade

Major work began 15 January 2014





Site compound establishment, July 2013



Site compound, February 2014



Clearing, April 2014

every journey matters



Clearing for main alignment, April 2014



Clearing work at Cut 32, January 2014



Cut 32 North view, June 2014



Clearing for main road, Ballards Road, June 2014

every journey matters



20km of property boundary fencing has been installed across the project.

50,000 metres of fence wire has also been installed.



Widening of Ballards Road, November 2013



Widening of Ballards Road, December 2013

Piling began at Ballards Road in April 2015.

37 bridges have been constructed, including:

- 14 twin highway bridges
- Six highway overpass bridges





First girder placement at Ballards Road, August 2014- 14

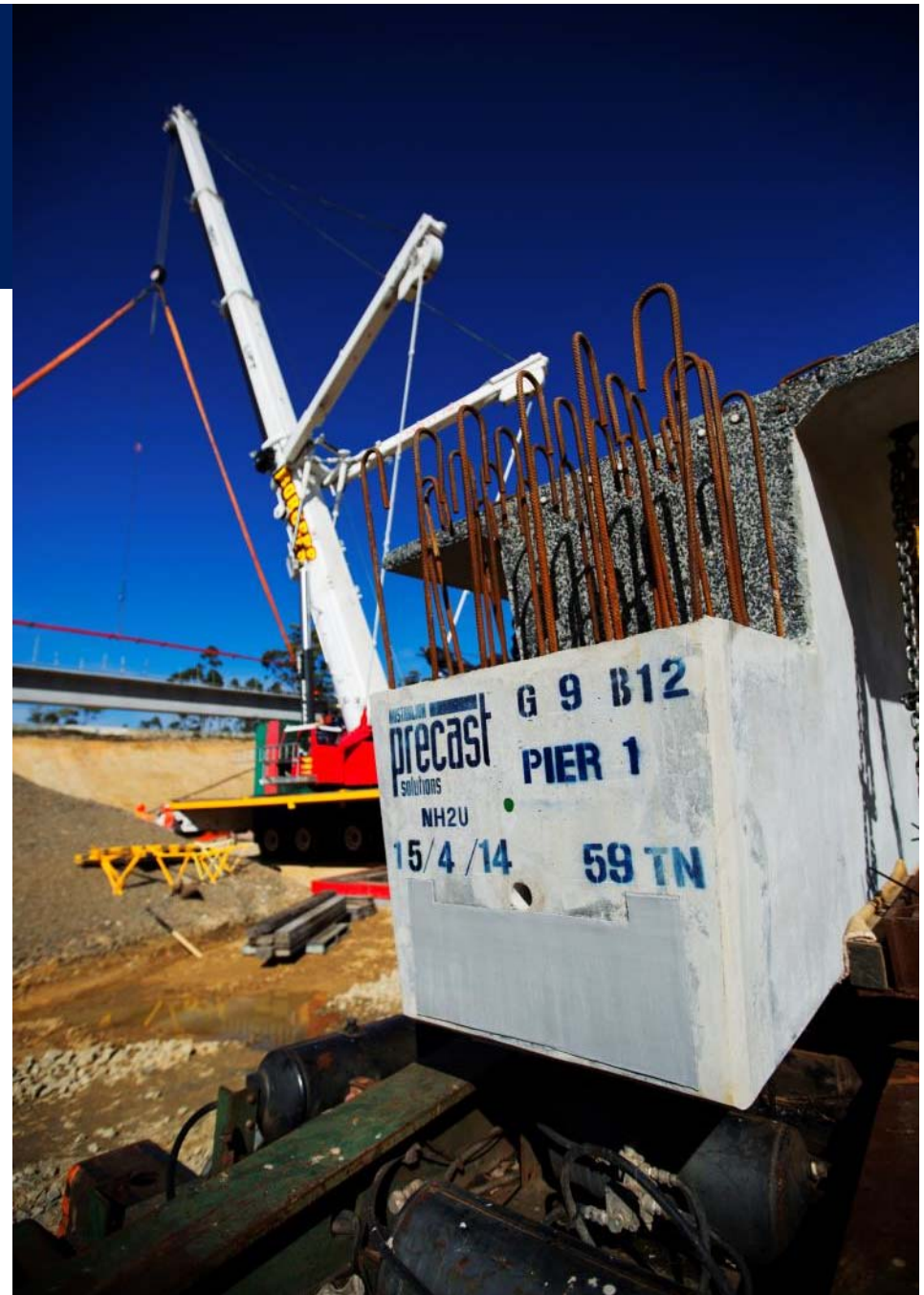
every journey matters

Bridge girders and planks

Concrete girders and planks are made in Macksville and delivered to site.

This project has placed:

- 291 girders
- 263 planks





Ballards Road bridge, September 2014



Deck pour at Ballards Road bridge, September 2014 - 17

every journey matters



View of Ballards Road, October 2014



Ballards Road opened to traffic, February 2015 - 19

every journey matters















Traffic switch at Martells Road, June 2014





Martells Road bridge, May 2015



Martells Road view to north, May 2015





Soft soil work at Kalang River, January 2014



Kalang River temporary bridge, September 2014 - 32

every journey matters





Kalang River, November 2014

- 34

every journey matters



Each bridge is 190 metres long, and each carriageway is 11 metres wide.









Short Cut Road bridge, November 2014



Short Cut Road bridge, November 2014



Short Cut Road bridge, April 2015



Waterfall Way view south, July 2014



Waterfall Way view south, October 2014



Waterfall Way view south, March 2015







View to north from East West Road



East West Road bridge, November 2015



The bridge between the Pacific Highway and East West Road was opened to traffic in December, 2015



Deep Creek north view, April 2014



Deep Creek south view, June 2014





Deep Creek, June 2014

- 53

every journey matters



Piling at Deep Creek, November 2014



Twin bridges at Deep Creek, January 2015



Twin bridges at Deep Creek, November 2015



Valla Road bridge, October 2014



Twin bridges at Valla Road, November 2015



Animal relocation at Boggy Creek, May 2014



Boggy Creek, August 2014

- 60

every journey matters







Boggy Creek and service road, November 2015 - 63

every journey matters





Nambucca Heads interchange, January 2015



Nambucca Heads interchange, March 2015



Nambucca Heads interchange, November 2015 - 67

every journey matters



North Coast Rail bridge, October 2014



North Coast Rail bridge, January 2015



North Coast Rail bridge, February 2015

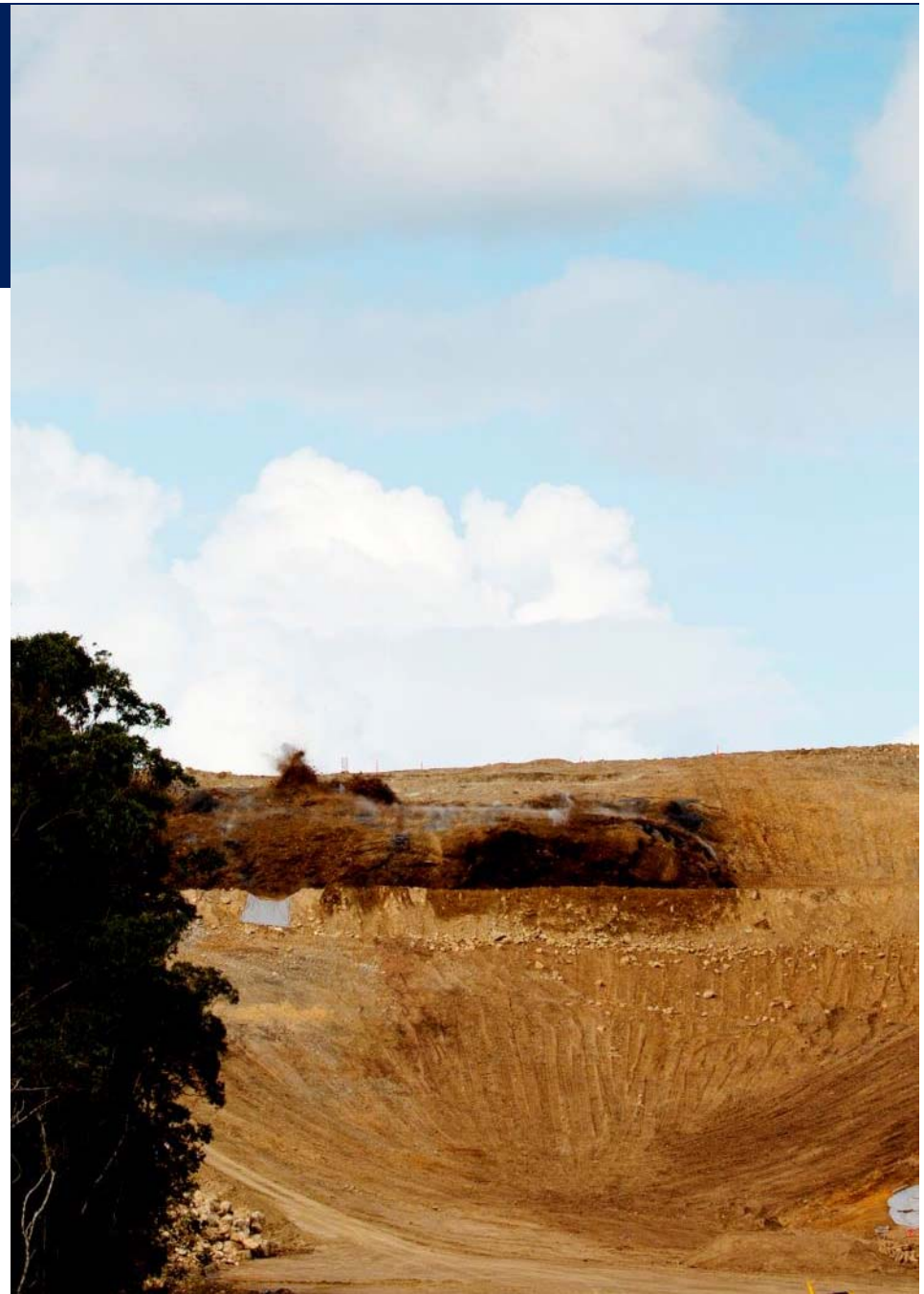


North Coast Rail bridge, March 2015

Controlled blasting

Controlled open cut blasting was used to help remove the rock material.

The first trial blast was undertaken in April 2014.





More than 3.8 million cubes of dirt has been moved across the entire project.

Cut 26

2.1 million tonne of material was removed from this area alone.





Cut 26, September 2014

- 75

every journey matters






Cut 26, November 2015

- 77

every journey matters







On completion, more than
180,000 cubic metres of
concrete will be batched on
site for the new road.



Site batch plant



Media event to mark the start of paving, March 2015 - 82

every journey matters



Paving began, March 2015

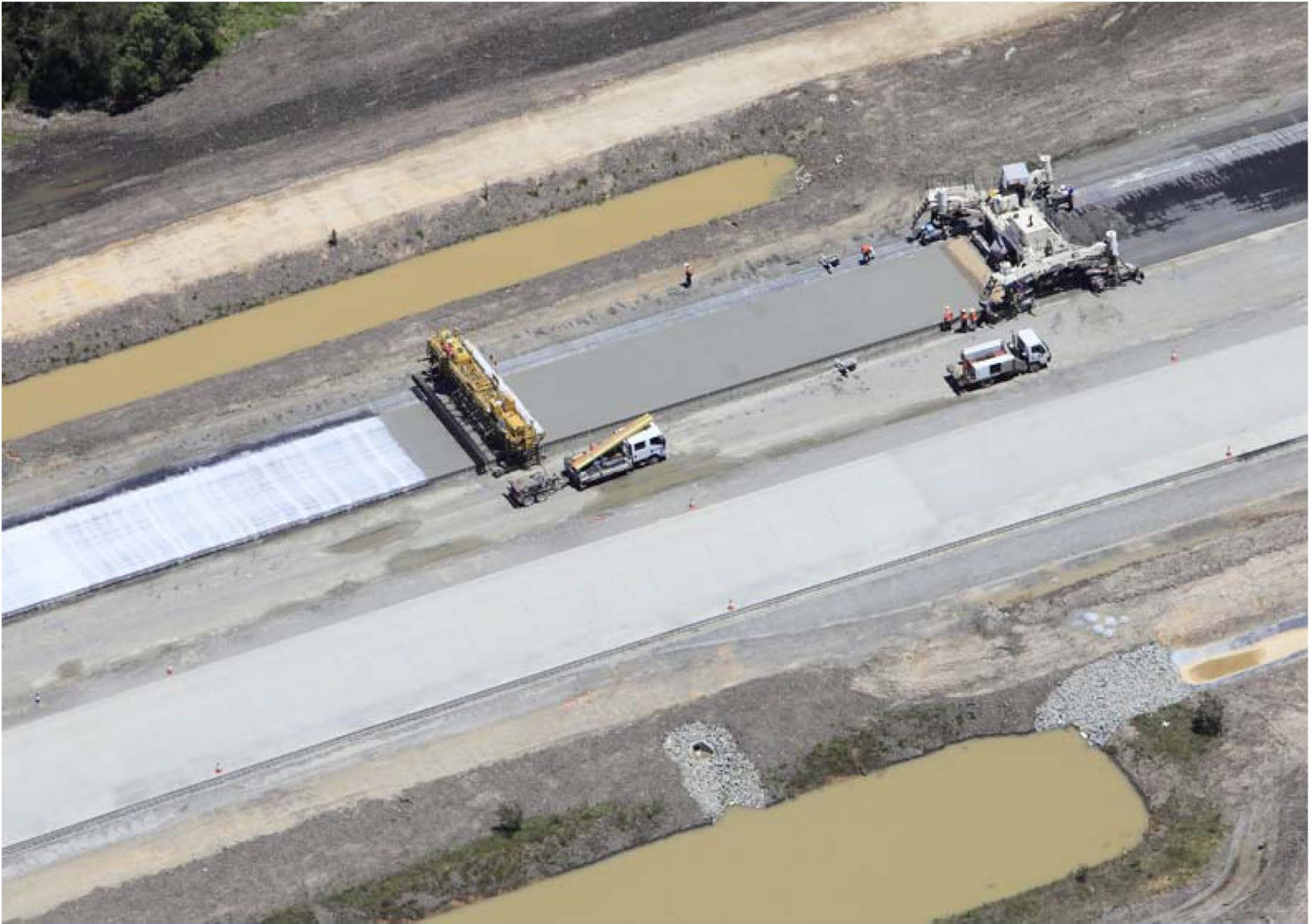




Paving north of the Kalang, March 2015

- 85

every journey matters



Paving of main alignment, November 2015









View to South Access Road G, February 2016

every journey matters



Access Road C, May 2014

- 91

every journey matters



View to South between East West Road
and Burkes Lane, April 2015



North view between Deep Creek and East West Road, November 2014



North view between Burkes Lane and
East West Road, November 2015



Stabilising work north of Burkes Lane, February 2015 - 95

every journey matters



38,300 survey pegs installed
Equating to a peg each side of
the new road every 1.7
metres.



227 nest boxes have been installed across the project.



15km of fauna fencing
has been installed across
the project.





First landscaping undertaken, October 2015



11 community information sessions have been held since the start of the project.



20,000 cubic metres of mulch to local community members and farmers.