

Fact Sheet

New Hastings River Bridge



JANUARY 2015

OXLEY HIGHWAY TO KUNDABUNG PACIFIC HIGHWAY UPGRADE

Construction activity on the Hastings River 2015 - 2017

The Australian and NSW governments are jointly funding the 23 kilometre Oxley Highway to Kundabung Pacific Highway upgrade. The project includes building a major bridge over the Hastings River, 500 metres west of the Dennis Bridge. This fact sheet explains the timing of this work and how it will affect river users.

Design

The new Hastings River bridge will be 574 metres long and have a navigation clearance height of eight metres. The bridge will consist of 15 supported spans placed onto 14 twin piers, 12 of which will be in the river.

The bridge spans between piers will be about 38 metres. Each span will comprise of 10 precast concrete super-T beams. When complete the bridge will carry two lanes of traffic in each direction separated by a central median barrier.

Location

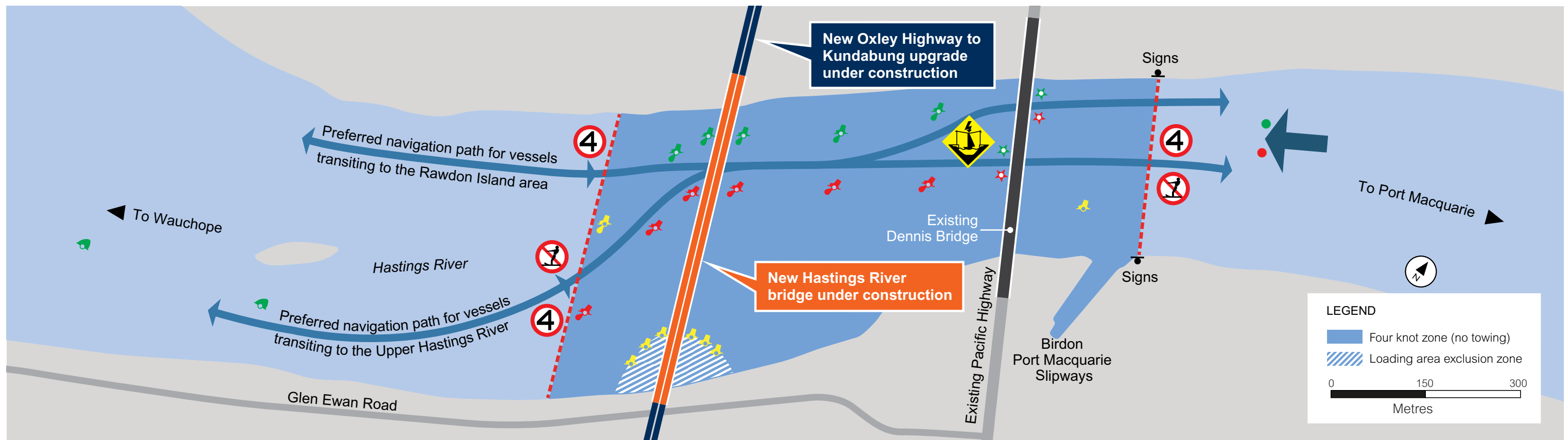
The new Hastings River bridge will be built about 500 metres west of the existing bridge.

Timing

Building will start on the new Hastings River bridge in March 2015 and is due for completion in mid-2017, weather permitting.



Location map.



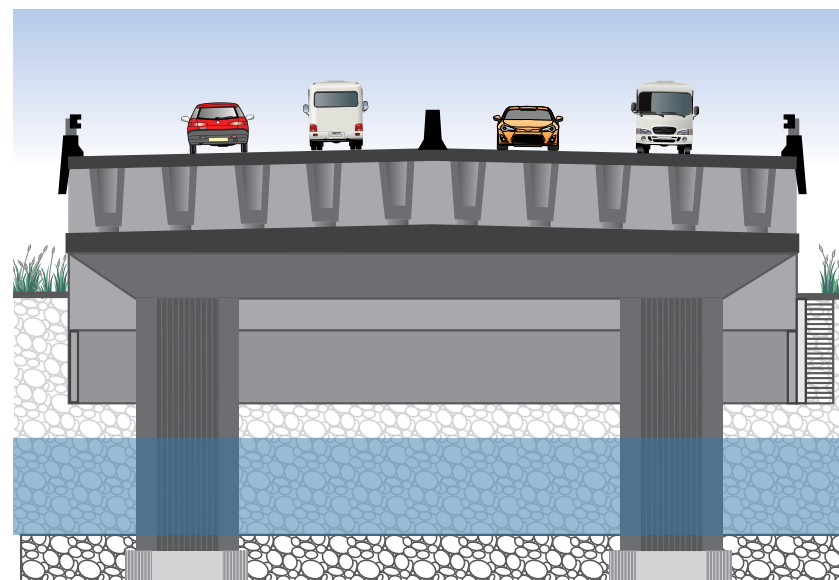
Marine access around the bridge construction site and temporary navigation restrictions.

Impact on river users

Marine access will be maintained around the building site at all times, with some restrictions on river users. These include:

- Speed restrictions near the building area
- The partial closure of the river with a navigable channel maintained at all times.

The restrictions are to ensure the safety of river users and workers and will be in place for the duration of the bridge construction.



Cross-section impression of the new Hastings River bridge at the northern abutment.



Artist's impression of the new Hastings River Bridge as viewed from Glen Ewan Road looking north west.

Frequently Asked Questions

Can we still use the river during construction of the bridge?

Yes. A navigable channel will be maintained around the construction area at all times. A reduced speed limit of four knots and 'no towing' restrictions will be in place near the building area which may impact on some activities.

Are there any environmental impacts on the river from the building work?

A detailed environmental management plan has been developed for all construction activity on the river. The plan outlines the controls that will be implemented to minimise the environmental impact from the work. Controls will include:

- application of floating barriers around all work areas to contain and control the dispersion of silt in the river
- installation of a physical barrier to contain any spills
- a strict regime of testing and monitoring to ensure that the controls are adequate and effective.

Will work be stopped during summer?

Work will stop for two weeks each year during the Christmas and New Year holiday period. While no building work will take place during these two weeks, the navigation and speed restrictions will remain in place due to the changed conditions on the river.

Can we still fish around Dennis Bridge?

Yes. The building work will not interfere with authorised fishing around Dennis Bridge.

What will be the permanent speed limit on the river after the new bridge is built?

This has not been determined. Issues around safety will be considered and consultation will take place with river users before a permanent post-construction speed limit is decided.

How can I get a job working on the project?

Lend Lease will hire different roles at various stages throughout the life of the project. To enquire about working on the project send your expression of interest along with a current resume to contactoh2ku@lendlease.com

How the bridge will be built

The new Hastings River bridge will be built using two large cranes operating from barges, a tug boat, several pontoons and a number of smaller work boats.

A temporary rock jetty will be built at both the northern and southern banks of the Hastings River. The jetty will be used to prepare and load materials onto the barges and pontoons.

Work will be completed from the various vessels as well as temporary work platforms mounted to the piers. Construction activity will include drilling, piling, pier construction, placement of concrete beams and finishing work.

Impact on flooding during construction

A detailed hydrological assessment has been completed for the temporary work (rock jetty). The study modelled the impact of the work in the event of a five, 20, 50 and 100 year flood event. The study, based on historical records and survey data, found no increased impact to properties as a result of the work.

In the event of a flood the building equipment will be moved to higher ground, marine vessels secured and staff evacuated until the flood waters pass.



The two barge-mounted cranes will operate on the Hastings River throughout construction of the new bridge.

For further enquiries contact the Community Relations Teams



1800 154 724 (toll free) - Press 1 for Oxley Highway to Kundabung.



ContactOH2Ku@lendlease.com