

Shared pedestrian and cycle path for Coffs Coast northern beaches

Sapphire to Woolgoolga, Pacific Highway upgrade



Transport
Roads & Maritime
Services

NSW
NOW
The new state
of business

AUGUST 2014

Roads and Maritime Services has further developed enhanced shared pedestrian and cycle path facilities on the Sapphire to Woolgoolga Pacific Highway upgrade.

The Sapphire to Woolgoolga Pacific Highway upgrade will deliver 25km of four-lane, separated highway from north of Coffs Harbour, including a bypass of Woolgoolga.

The project includes new lanes in both directions, high standard connections to and from the 110km/h motorway at key points between Sapphire and Woolgoolga and a new continuous local road network.

This upgrade will improve safety and travel efficiency for all journeys, from heavy vehicles and high-speed longer journeys, to cyclists and low speed shorter trips. Local networks are designed for making short local trips including those by cyclists and school buses.

Shared path to be provided by the Sapphire to Woolgoolga project in 2014

Shared pedestrian and cycle path facilities approved for the project include a continuous path from Coachmans Close at Korora to the Solitary Islands Way overbridge north of Emerald Beach. These sections are intended to be built progressively in the second half of 2014.

The project includes a combination of:

- Shared path facilities next to shoulders on the local access road (Solitary Islands Way) with 1m to 1.5m separation
- Sealed shoulders on residential streets and local access roads
- Off road facilities.

Proposed future cycleway

Pedestrian and cycle path facilities planned through future arrangements in consultation with Coffs Harbour City Council include:

- An off-road path from north Sapphire to Moonee Beach along the eastern side of the highway upgrade
- Extension of the shared user path from the Solitary Islands Way overbridge north of Emerald Beach along Solitary Islands Way to Sandy Beach Public School to link with the existing pathway through Sandy Beach
- An on road pathway along Solitary Islands Way from near Woolgoolga High School to Arrawarra Beach Road.

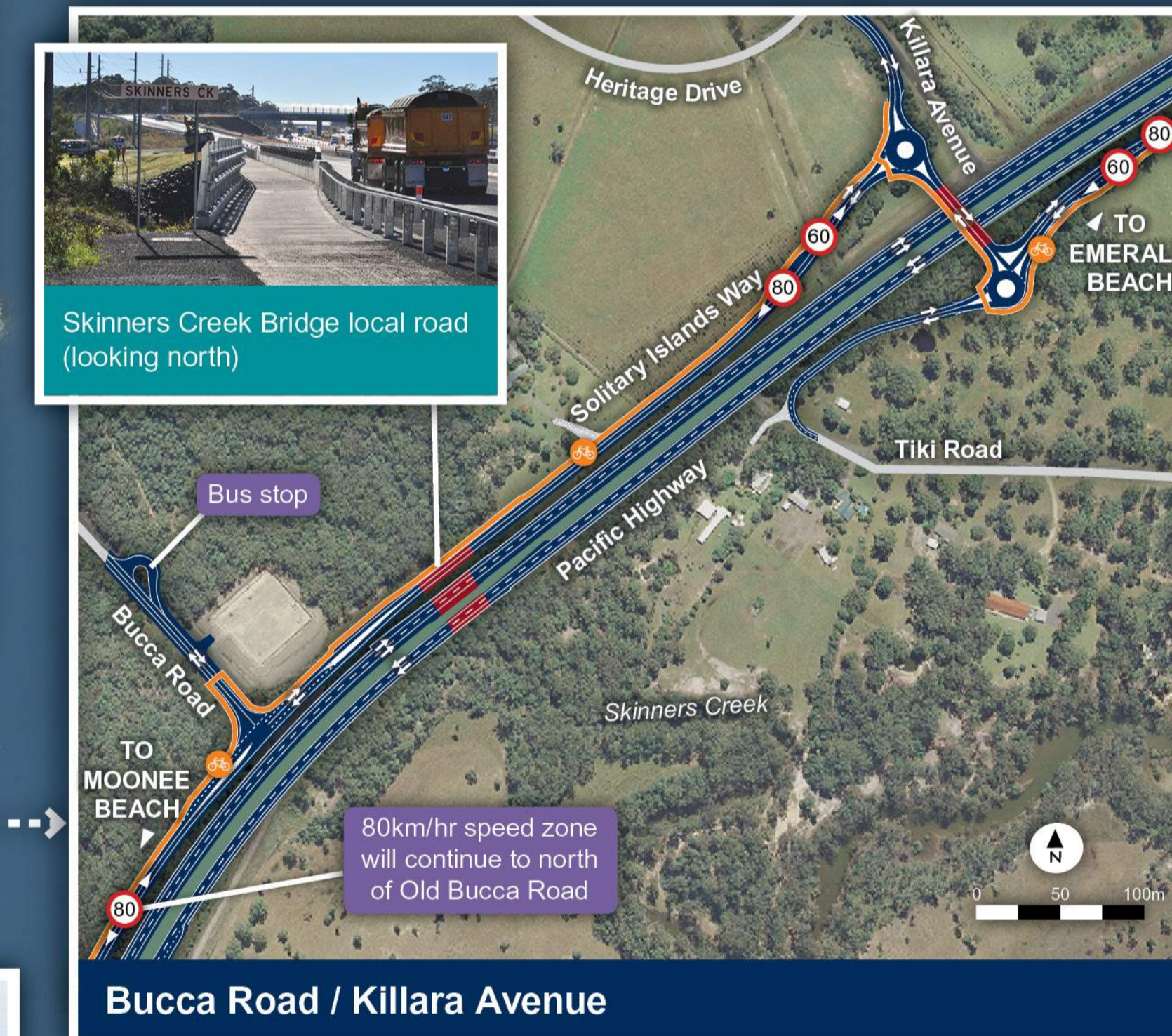
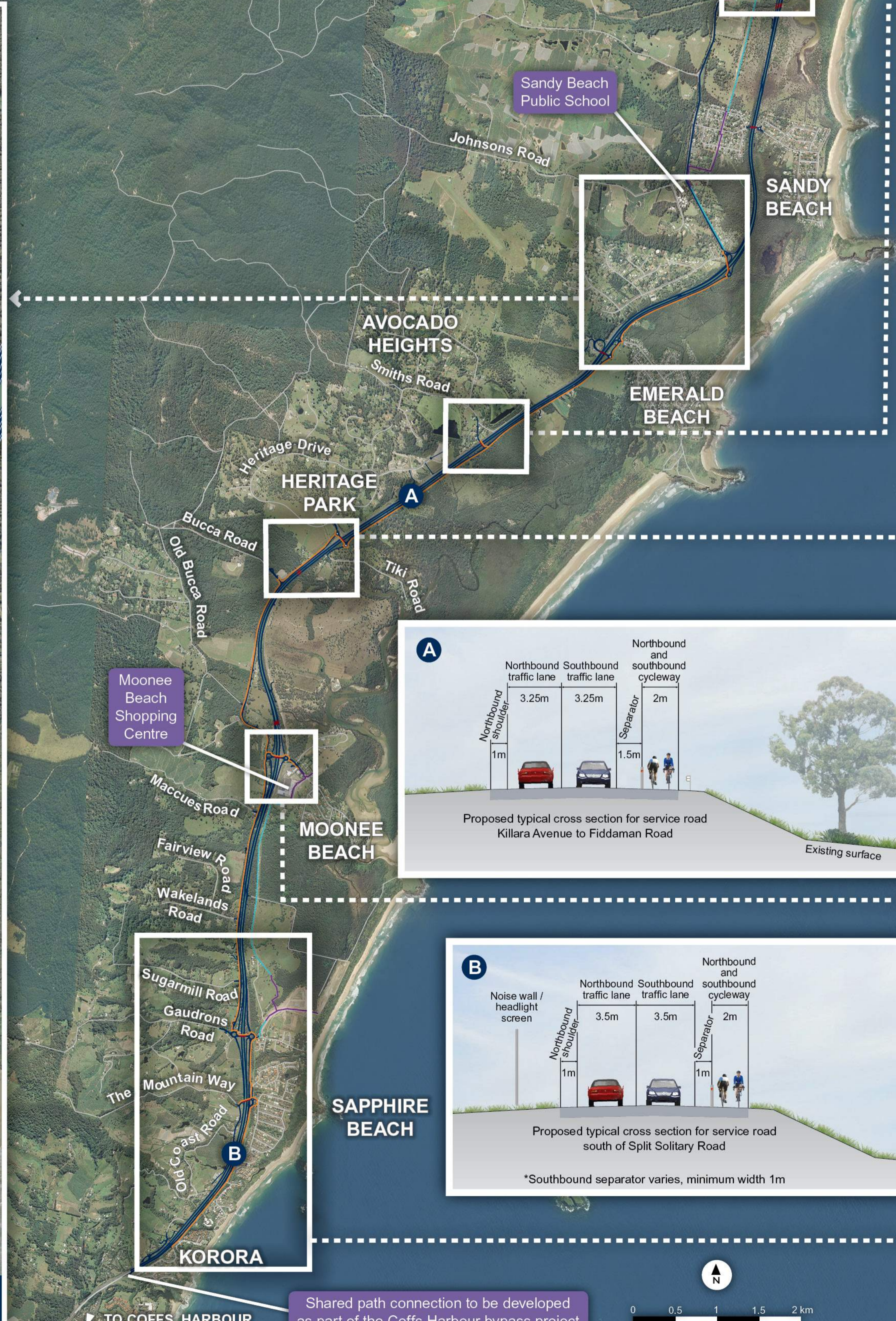
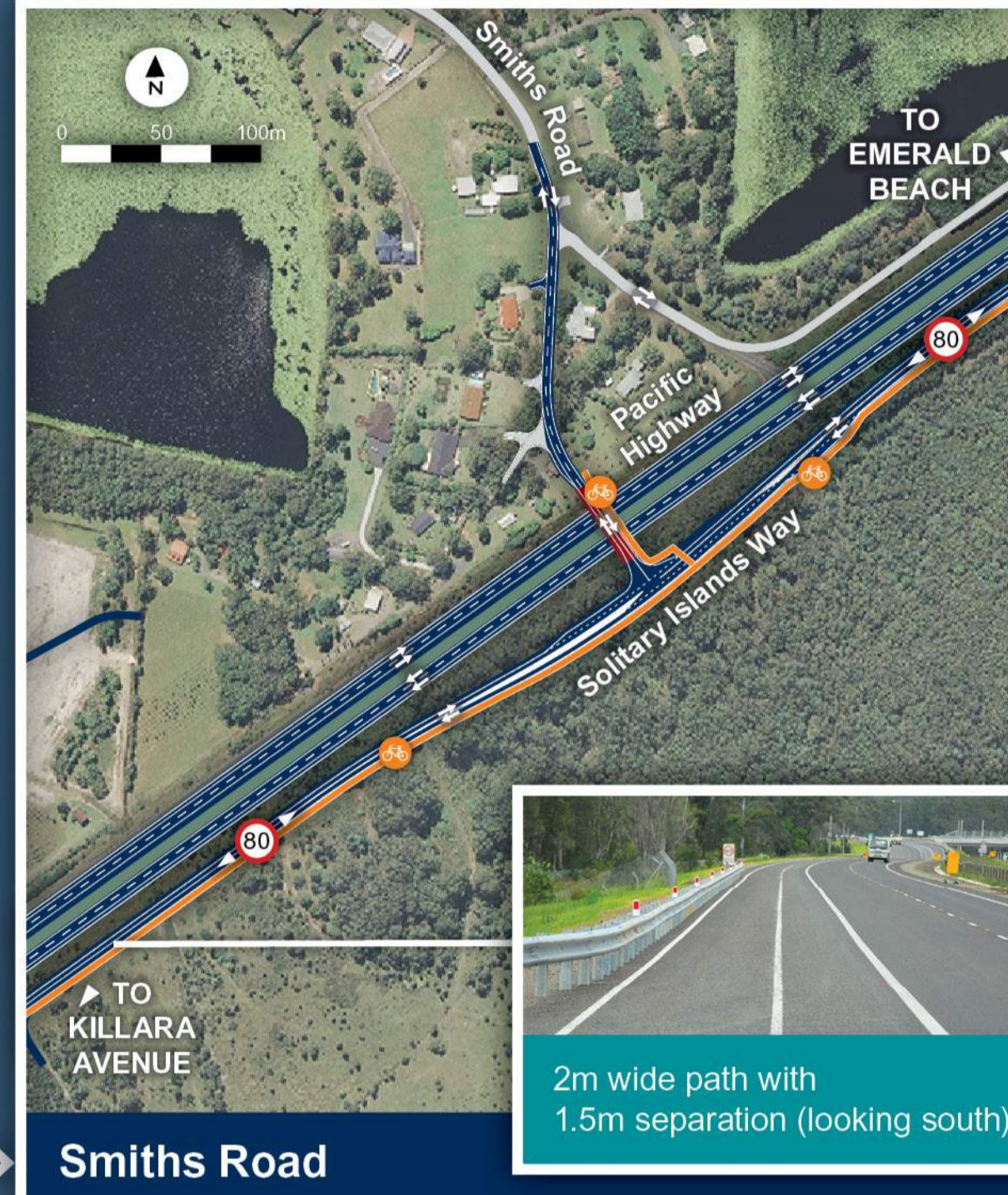
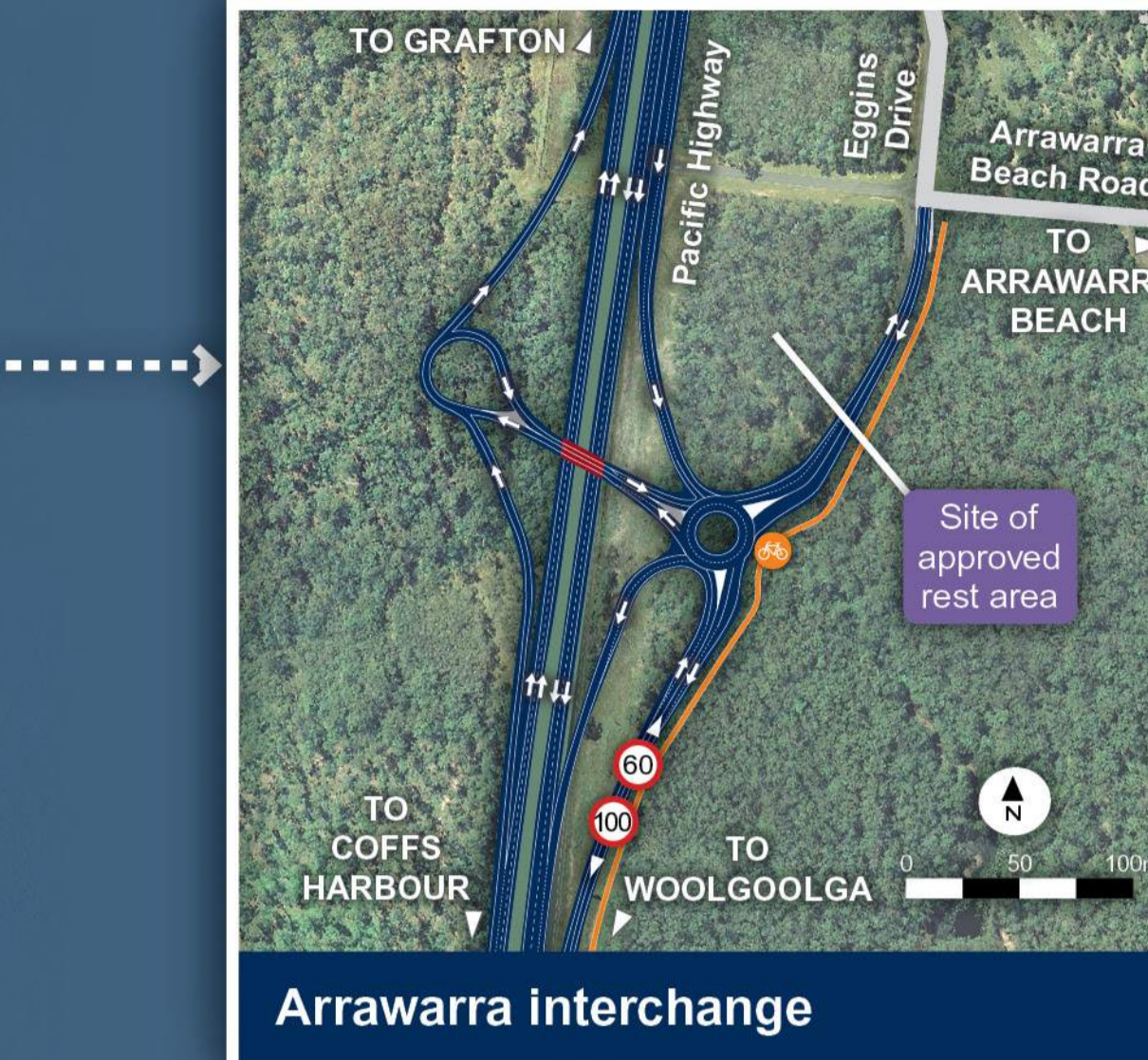
The shared pedestrian and cycle path proposal considers existing and future infrastructure planned for the local area.

Speed limits

Roads and Maritime has also investigated suitable speed limits for the local road network once the highway upgrade is complete. The outcomes of the speed review indicate a combination of 60km/h and 80km/h to be appropriate between Sapphire and Woolgoolga.

60km/h speed zones are proposed in locations where there are multiple accesses and connections to the local service road and would provide safer conditions for all road users, including cyclists, cars and school buses. 80km/h speed zones are proposed on straighter sections of the service road with less access connections.

The proposed service road speed limits have been included in the plans below.



For more information
 phone 1800 653 092
 email pacific.highway@rms.nsw.gov.au
 write to Sapphire to Woolgoolga upgrade
 PO Box 9082, Moonee Beach NSW 2450
 or visit www.rms.nsw.gov.au/pacific