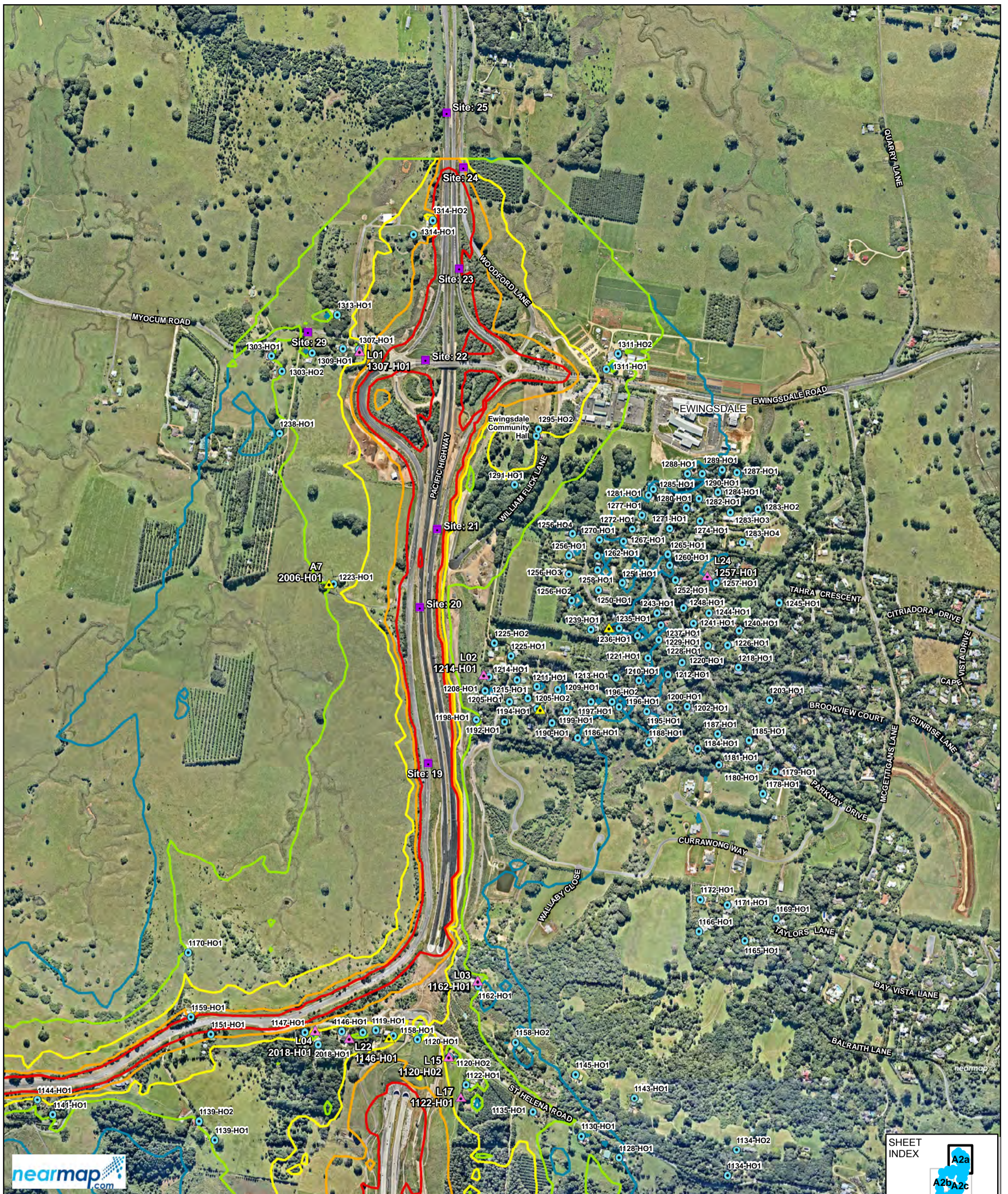


# Appendix E – 2016 Project opening noise contours

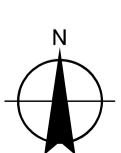
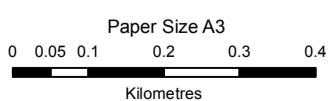


**LEGEND**

<b>Description of Monitoring</b>	<b>Sound pressure level, LAeq (15 hour)</b>
Attended monitoring	45 dBA
Unattended monitoring	50 dBA
Traffic monitoring	55 dBA
Weather Station	60 dBA
Receiver	65 dBA

**SHEET INDEX**

A2a
A2b/A2c
A2d
A2e/A2f
A2g
A2h
A2i



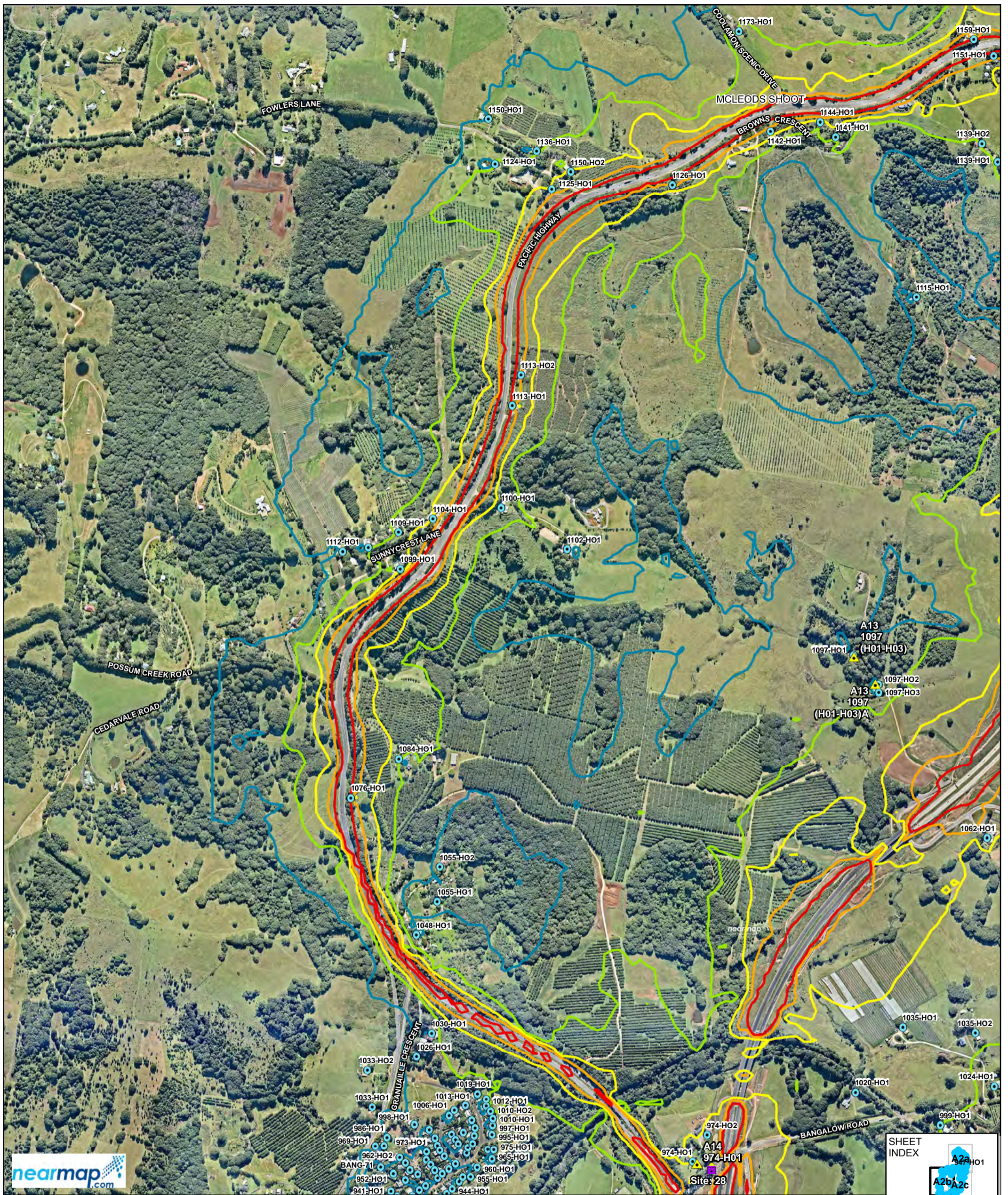
Map Projection: Transverse Mercator  
Horizontal Datum: GDA 1994  
Grid: GDA 1994 MGA Zone 56

Roads and Maritime Services  
T2E Post Construction Noise Monitoring

Job Number | 22-18466  
Revision | 1  
Date | 09 Feb 2017

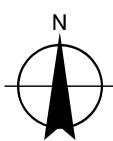
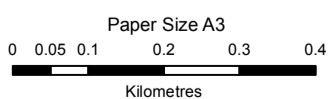
Predicted noise levels - day 2016

Figure A2a



SHEET INDEX	
A2a	1
A2b	2
A2c	3
A2d	4
A2e	5
A2f	6
A2g	7
A2h	8
A2i	9

LEGEND	
Description of Monitoring	
	Attended monitoring
	Unattended monitoring
	Traffic monitoring
	Weather Station
	Receiver
Sound pressure level, LAeq (15 hour)	
	45 dBA
	50 dBA
	55 dBA
	60 dBA
	65 dBA



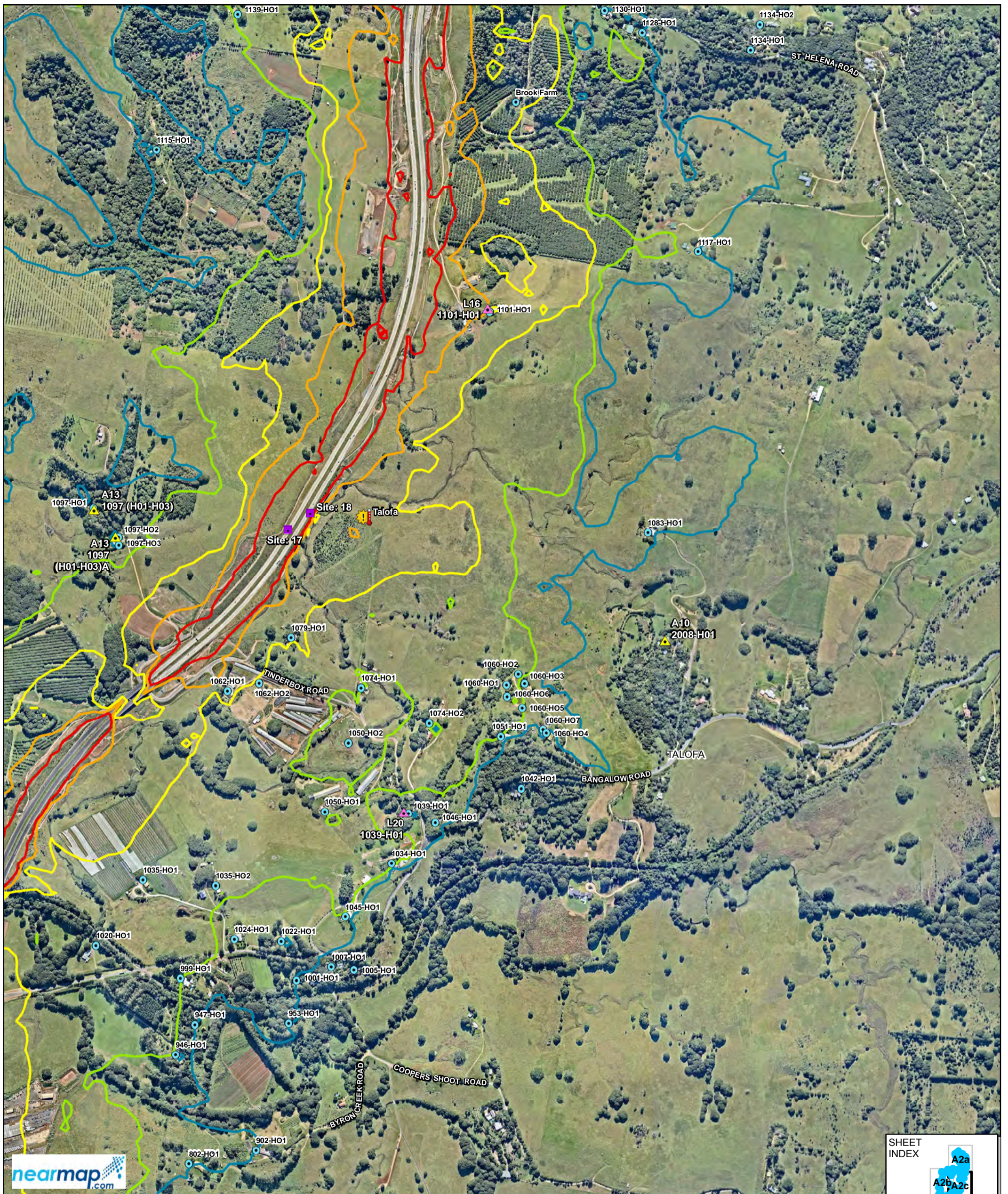
Map Projection: Transverse Mercator  
Horizontal Datum: GDA 1994  
Grid: GDA 1994 MGA Zone 56

Roads and Maritime Services  
T2E Post Construction Noise Monitoring

Job Number 22-18466  
Revision 1  
Date 09 Feb 2017

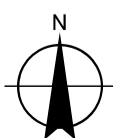
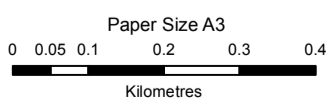
Predicted noise levels - day 2016

Figure A2b



SHEET INDEX	
A2a	A2b
A2c	A2d
A2e	A2f
A2g	A2h
A2i	

LEGEND	
<b>Description of Monitoring</b>	<b>Sound pressure level, LAeq (15 hour)</b>
Attended monitoring	45 dBA
Unattended monitoring	50 dBA
Traffic monitoring	55 dBA
Weather Station	60 dBA
Receiver	65 dBA



Map Projection: Transverse Mercator  
Horizontal Datum: GDA 1994  
Grid: GDA 1994 MGA Zone 56

Roads and Maritime Services  
T2E Post Construction Noise Monitoring

Job Number | 22-18466  
Revision | 1  
Date | 09 Feb 2017

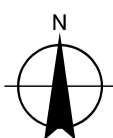
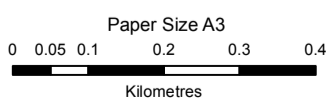
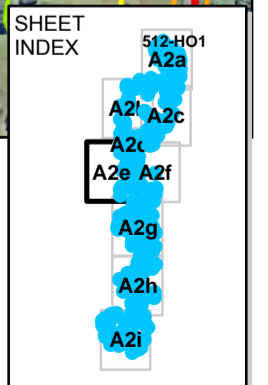
Predicted noise levels - day 2016

Figure A2c





LEGEND	
Description of Monitoring	Sound pressure level, LAeq (15 hour)
Attended monitoring	45 dBA
Unattended monitoring	50 dBA
Traffic monitoring	55 dBA
Weather Station	60 dBA
Receiver	65 dBA

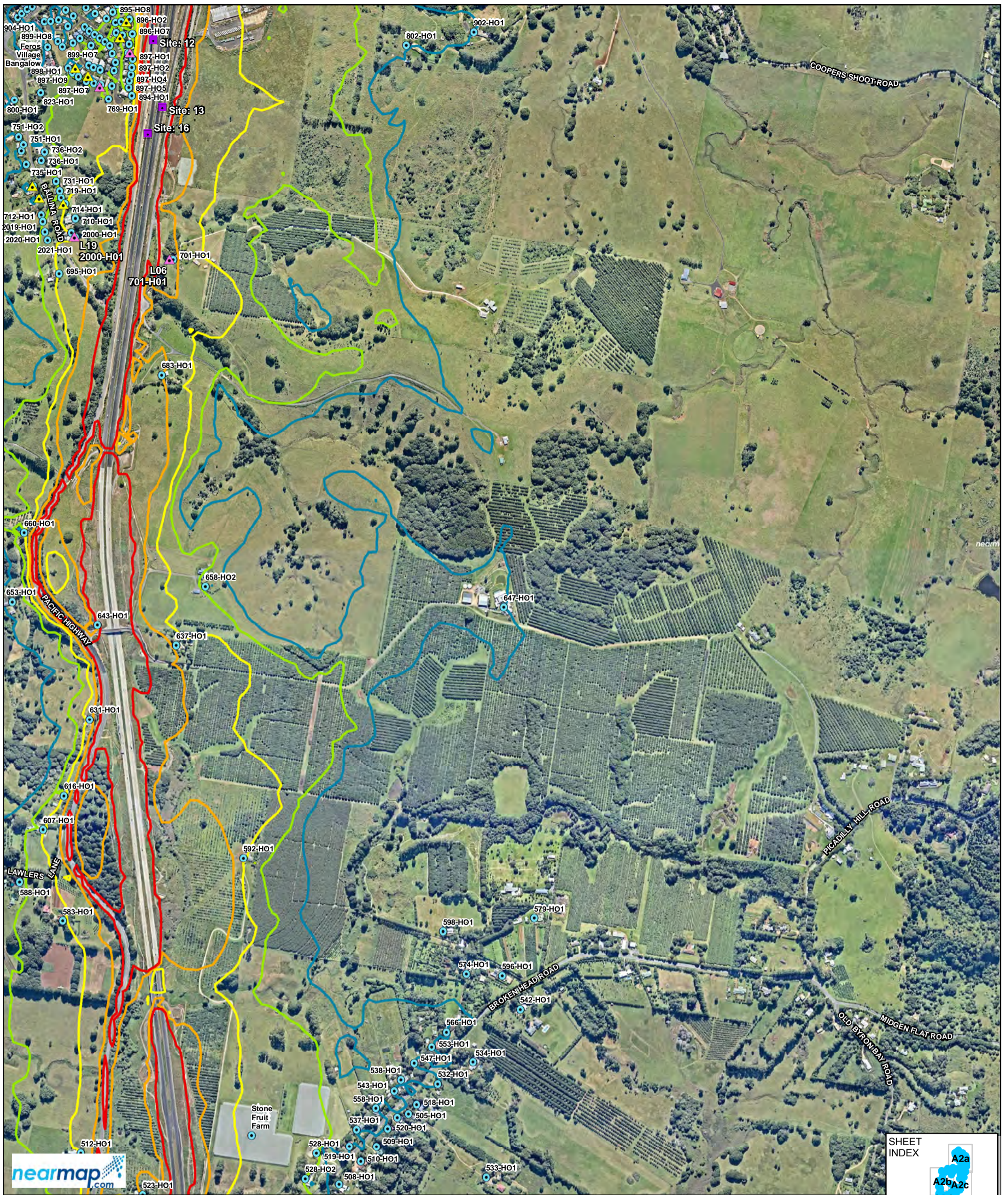


Roads and Maritime Services  
T2E Post Construction Noise Monitoring

Job Number 22-18466  
Revision 1  
Date 09 Feb 2017

Predicted noise levels - day 2016

Figure A2e

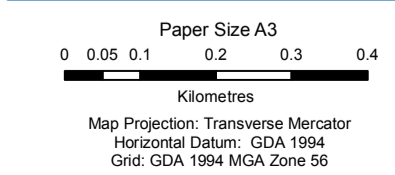


**LEGEND**

Description of Monitoring	Sound pressure level, LAeq (15 hour)
▲ Attended monitoring	45 dBA
△ Unattended monitoring	50 dBA
■ Traffic monitoring	55 dBA
☀ Weather Station	60 dBA
● Receiver	65 dBA

**SHEET INDEX**

A2a
A2b
A2c
A2d
A2e
A2f
A2g
A2h
A2i



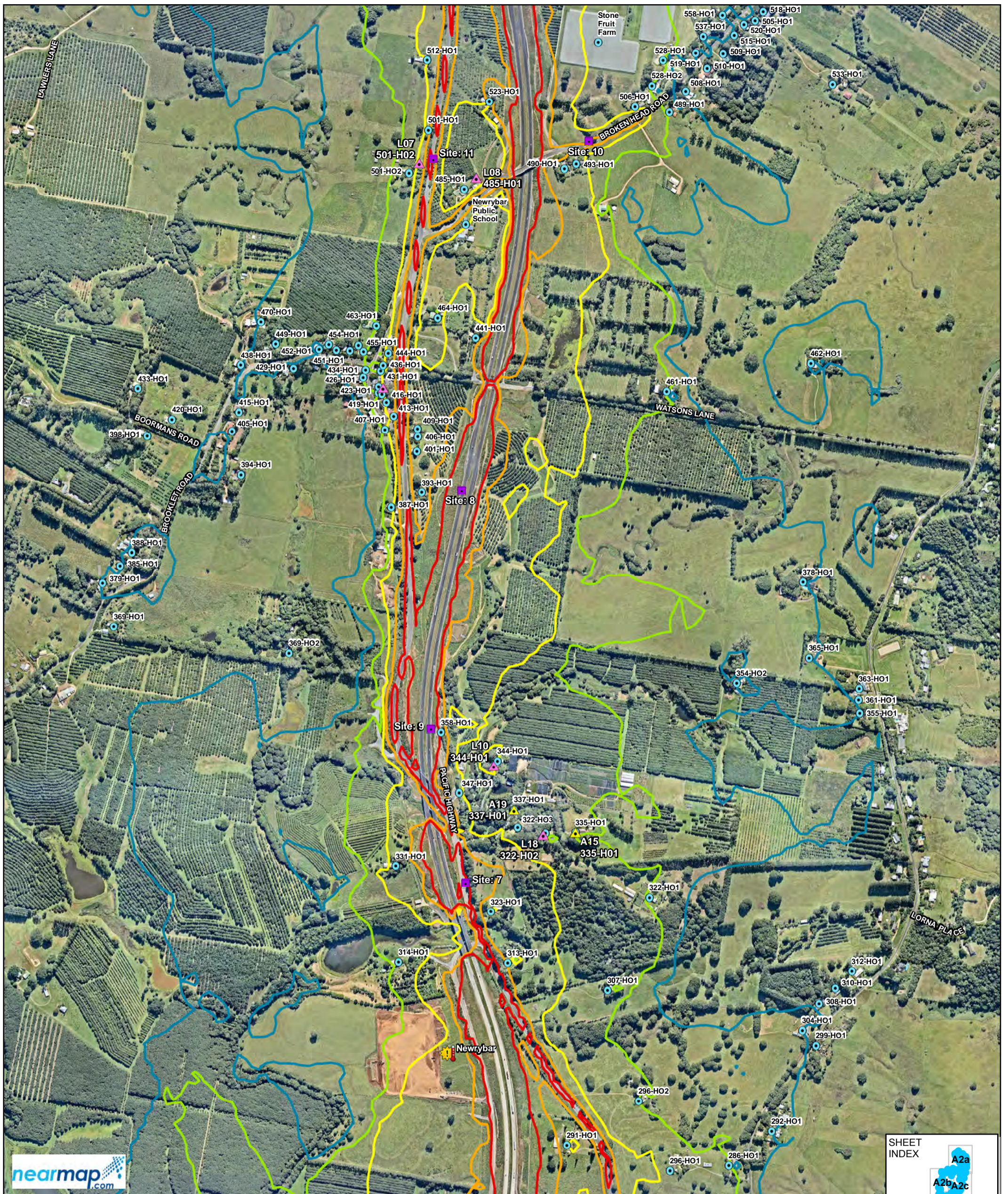
Roads and Maritime Services  
T2E Post Construction Noise Monitoring

Job Number 22-18466  
Revision 1  
Date 09 Feb 2017

Predicted noise levels - day 2016

Figure A2f

N:\AU\Newcastle\Projects\22\18466\GIS\Maps\Deliverables\Appendix\Version2\2218466\_V2A003\_NoiseContour\_Day\_2016\_DDP\_1.mxd  
Level 3, GHD Tower, 24 Honeysuckle Drive, Newcastle NSW 2300 T 61 2 4979 9999 F 61 2 4979 9988 E ntlmail@ghd.com W www.ghd.com.au  
© 2017. Whilst every care has been taken to prepare this map, GHD and Nearmap make no representations or warranties about its accuracy, reliability, completeness or suitability for any particular purpose and cannot accept liability and responsibility of any kind (whether in contract, tort or otherwise) for any expenses, losses, damages and/or costs (including indirect or consequential damage) which are or may be incurred by any party as a result of the map being inaccurate, incomplete or unsuitable in any way and for any reason.  
Data source: Nearmap, Photomap, 2016. Created by: gmcdiamid, tmorton

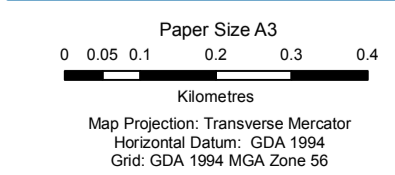


**LEGEND**

<b>Description of Monitoring</b>	<b>Sound pressure level, L<sub>Aeq</sub> (15 hour)</b>
▲ Attended monitoring	45 dBA
△ Unattended monitoring	50 dBA
■ Traffic monitoring	55 dBA
☀ Weather Station	60 dBA
● Receiver	65 dBA

**SHEET INDEX**

A2a
A2b
A2c
A2d
A2e
A2f
<b>A2g</b>
A2h
A2i



Roads and Maritime Services  
T2E Post Construction Noise Monitoring

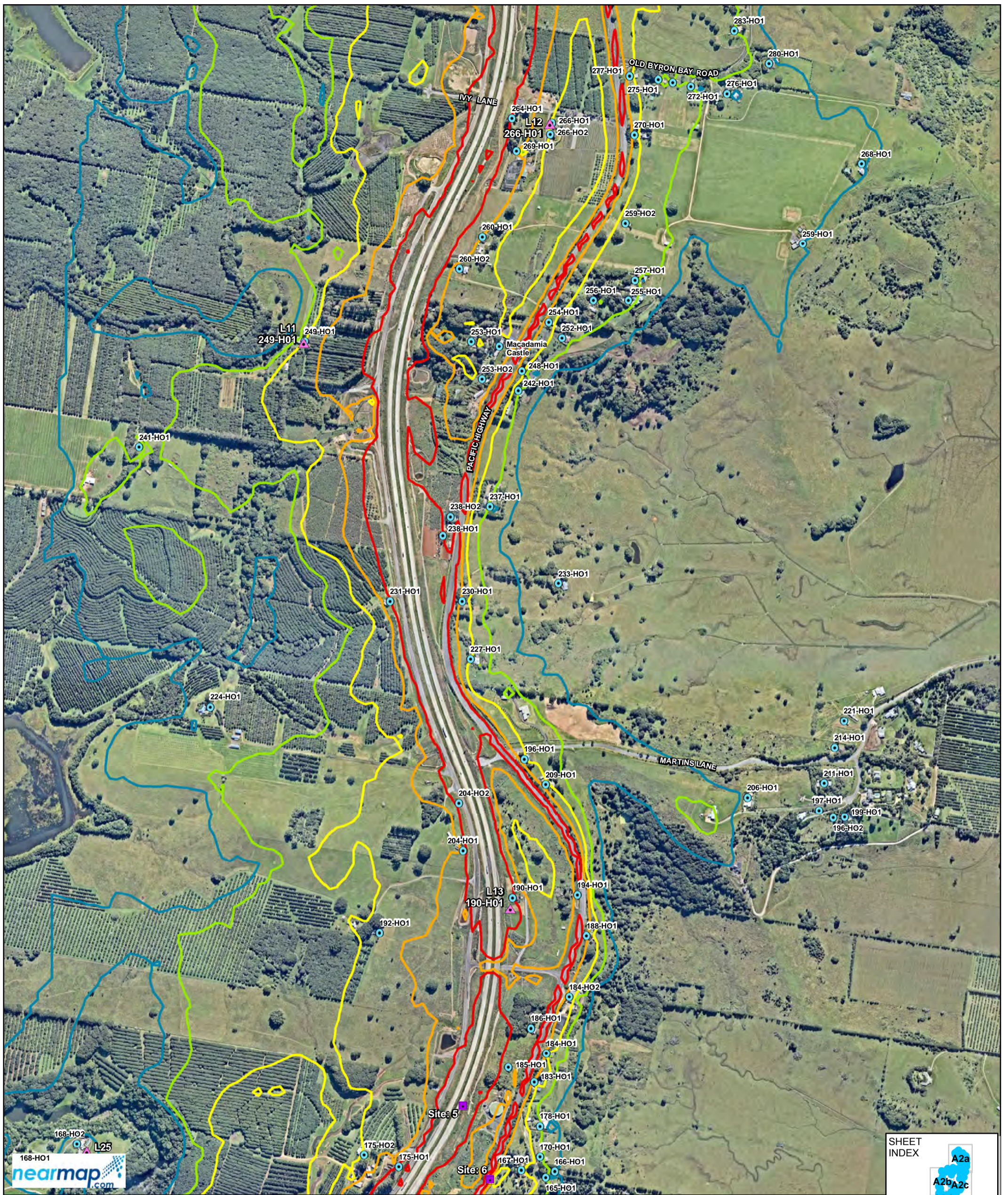
Job Number | 22-18466  
Revision | 1  
Date | 09 Feb 2017

Predicted noise levels - day 2016

Figure A2g

N:\AU\Newcastle\Projects\22\18466\GIS\Maps\Deliverables\Appendix\Version2\2218466\_V2A003\_NoiseContour\_Day\_2016\_DDP\_1.mxd  
Level 3, GHD Tower, 24 Honeysuckle Drive, Newcastle NSW 2300 T 61 2 4979 9999 F 61 2 4979 9988 E ntlmail@ghd.com W www.ghd.com.au  
© 2017. Whilst every care has been taken to prepare this map, GHD and Nearmap make no representations or warranties about its accuracy, reliability, completeness or suitability for any particular purpose and cannot accept liability and responsibility of any kind (whether in contract, tort or otherwise) for any expenses, losses, damages and/or costs (including indirect or consequential damage) which are or may be incurred by any party as a result of the map being inaccurate, incomplete or unsuitable in any way and for any reason.  
Data source: Nearmap, Photomap, 2016. Created by: gmcdiamid, tmorton





**LEGEND**

<b>Description of Monitoring</b>	<b>Sound pressure level, LAeq (15 hour)</b>
Attended monitoring	45 dBA
Unattended monitoring	50 dBA
Traffic monitoring	55 dBA
Weather Station	60 dBA
Receiver	65 dBA

**SHEET INDEX**


Paper Size A3  
 0 0.05 0.1 0.2 0.3 0.4  
 Kilometres  
 Map Projection: Transverse Mercator  
 Horizontal Datum: GDA 1994  
 Grid: GDA 1994 MGA Zone 56



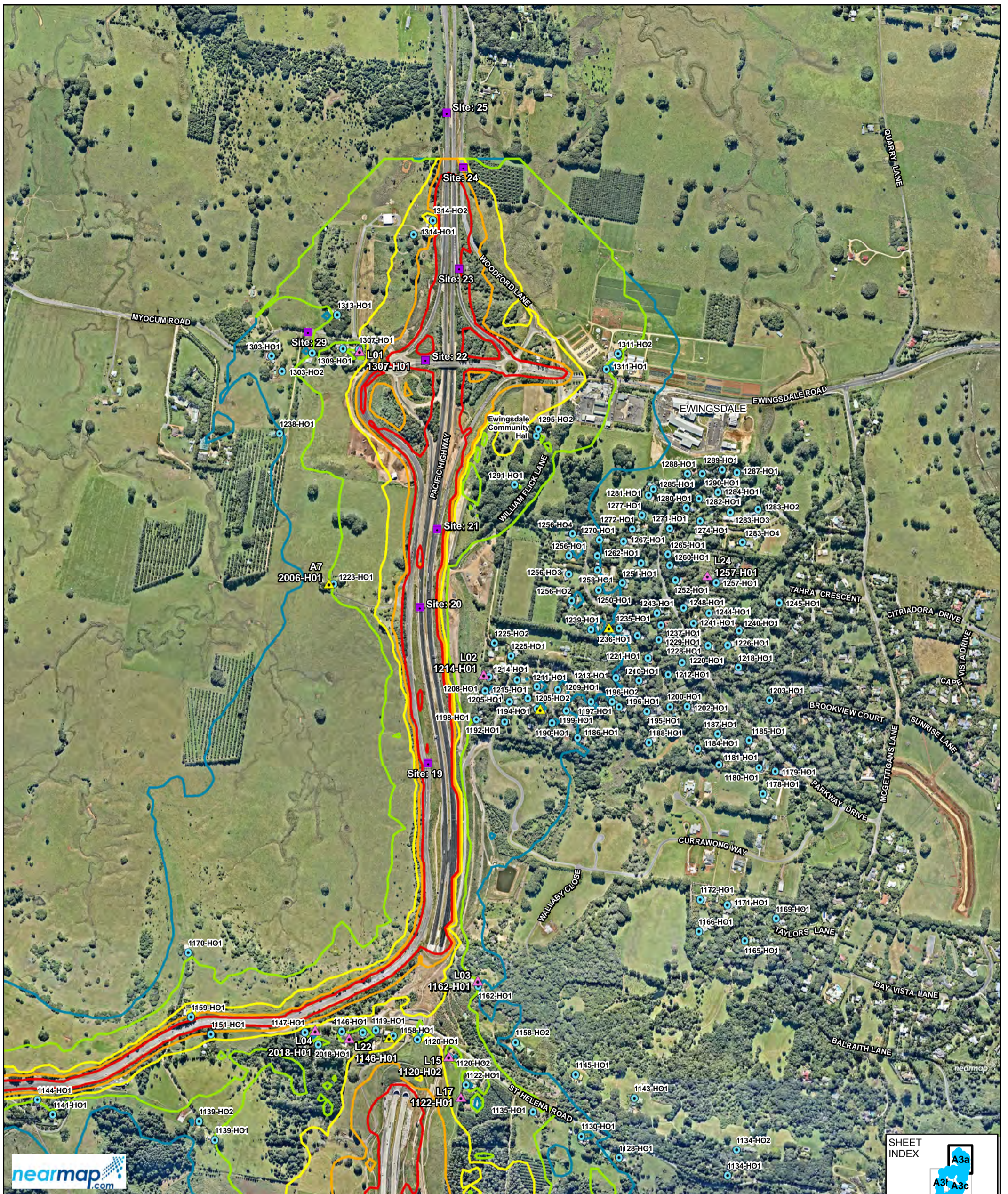
Roads and Maritime Services  
 T2E Post Construction Noise Monitoring

Job Number | 22-18466  
 Revision | 1  
 Date | 09 Feb 2017

Predicted noise levels - day 2016 Figure A2h

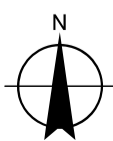
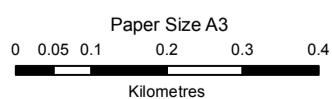
N:\AU\Newcastle\Projects\22\18466\GIS\Maps\Deliverables\Appendix\Version2\2218466\_V2A003\_NoiseContour\_Day\_2016\_DDP\_1.mxd Level 3, GHD Tower, 24 Honeysuckle Drive, Newcastle NSW 2300 T 61 2 4979 9999 F 61 2 4979 9988 E ntlmail@ghd.com W www.ghd.com.au  
 © 2017. Whilst every care has been taken to prepare this map, GHD and Nearmap make no representations or warranties about its accuracy, reliability, completeness or suitability for any particular purpose and cannot accept liability and responsibility of any kind (whether in contract, tort or otherwise) for any expenses, losses, damages and/or costs (including indirect or consequential damage) which are or may be incurred by any party as a result of the map being inaccurate, incomplete or unsuitable in any way and for any reason.  
 Data source: Nearmap, Photomap, 2016. Created by: gmcdiamid, tmorton





LEGEND	
Description of Monitoring	Sound pressure level, LAeq (9 hour)
Attended monitoring	45 dBA
Unattended monitoring	50 dBA
Traffic monitoring	55 dBA
Weather Station	60 dBA
Receiver	65 dBA

SHEET INDEX	
	A3a
	A3b
	A3c
	A3d
	A3e
	A3f
	A3g
	A3h
	A3i



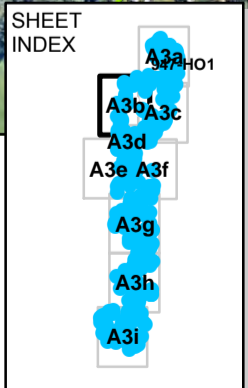
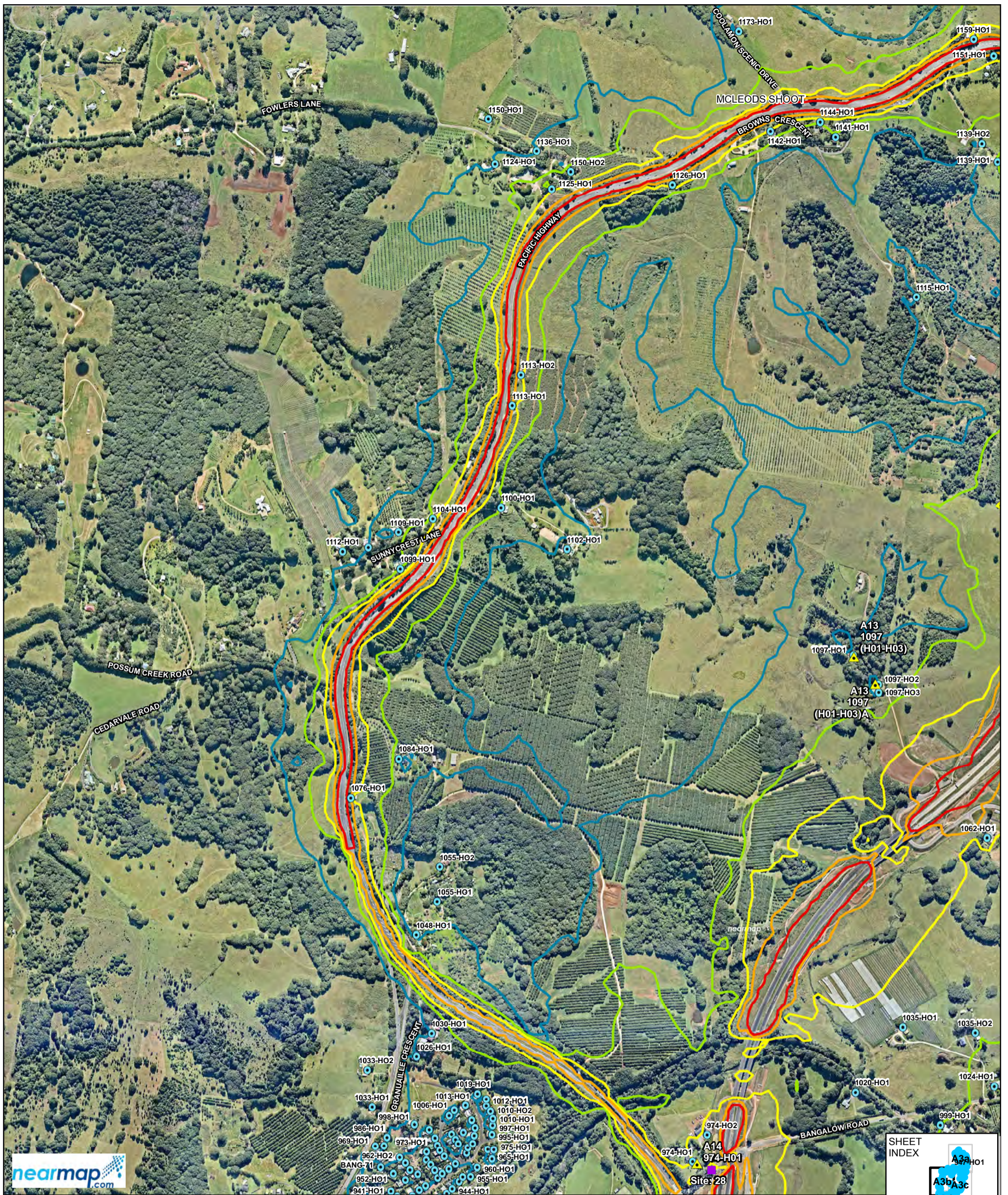
Map Projection: Transverse Mercator  
Horizontal Datum: GDA 1994  
Grid: GDA 1994 MGA Zone 56

Roads and Maritime Services  
T2E Post Construction Noise Monitoring

Job Number | 22-18466  
Revision | 1  
Date | 09 Feb 2017

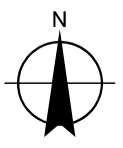
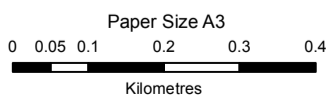
Predicted noise levels - night 2016

Figure A3a



**LEGEND**

<b>Description of Monitoring</b>	<b>Sound pressure level, LAeq (9 hour)</b>
▲ Attended monitoring	45 dBA
▲ Unattended monitoring	50 dBA
■ Traffic monitoring	55 dBA
☀ Weather Station	60 dBA
● Receiver	65 dBA



Roads and Maritime Services  
T2E Post Construction Noise Monitoring

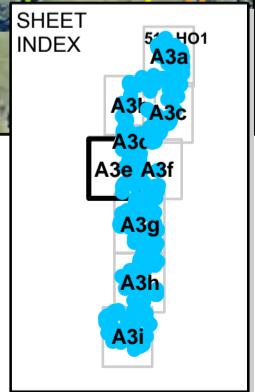
Job Number 22-18466  
Revision 1  
Date 09 Feb 2017

Predicted noise levels - night 2016 Figure A3b

N:\AU\Newcastle\Projects\2218466\GIS\Maps\Deliverables\Appendix\Version2\2218466\_V2A004\_NoiseContour\_Night\_2016\_DDP\_1.mxd  
Level 3, GHD Tower, 24 Honeysuckle Drive, Newcastle NSW 2300 T 61 2 4979 9999 F 61 2 4979 9988 E ntlmail@ghd.com W www.ghd.com.au  
© 2017. Whilst every care has been taken to prepare this map, GHD and Nearmap make no representations or warranties about its accuracy, reliability, completeness or suitability for any particular purpose and cannot accept liability and responsibility of any kind (whether in contract, tort or otherwise) for any expenses, losses, damages and/or costs (including indirect or consequential damage) which are or may be incurred by any party as a result of the map being inaccurate, incomplete or unsuitable in any way and for any reason.  
Data source: Nearmap, Photomap, 2016. Created by: gmcdiarmid, tmorton

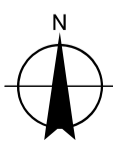
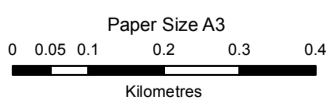






**LEGEND**

<b>Description of Monitoring</b>	<b>Sound pressure level, LAeq (9 hour)</b>
▲ Attended monitoring	45 dBA
▲ Unattended monitoring	50 dBA
■ Traffic monitoring	55 dBA
☀ Weather Station	60 dBA
● Receiver	65 dBA



Roads and Maritime Services  
T2E Post Construction Noise Monitoring

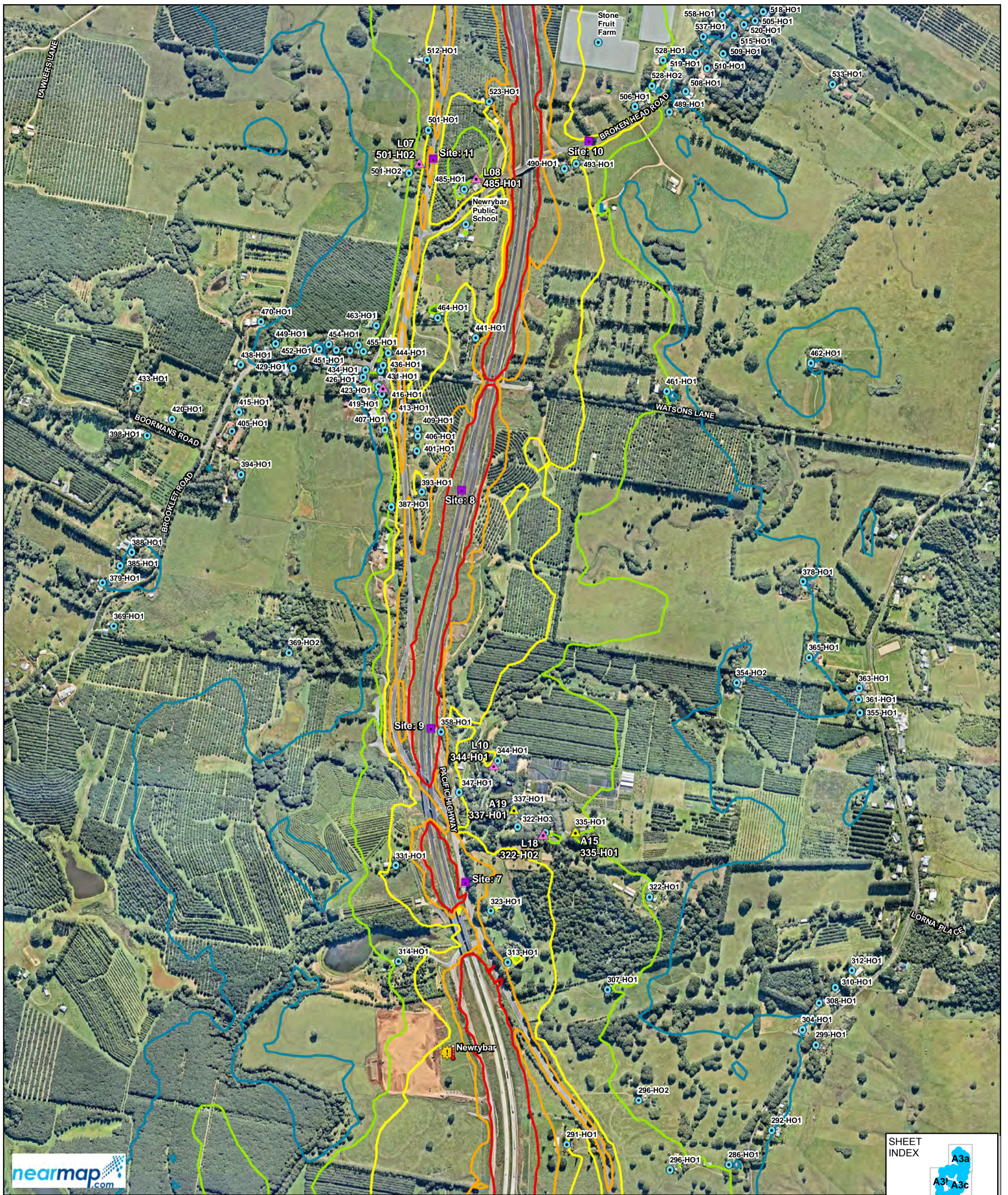
Job Number 22-18466  
Revision 1  
Date 09 Feb 2017

Predicted noise levels - night 2016

Figure A3e





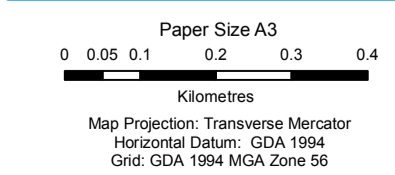


**LEGEND**

<b>Description of Monitoring</b>	<b>Sound pressure level, LAeq (9 hour)</b>
▲ Attended monitoring	45 dBA
▲ Unattended monitoring	50 dBA
■ Traffic monitoring	55 dBA
☀ Weather Station	60 dBA
⊙ Receiver	65 dBA

**SHEET INDEX**

A3a
A3b
A3c
A3d
A3e
A3f
<b>A3g</b>
A3h
A3i

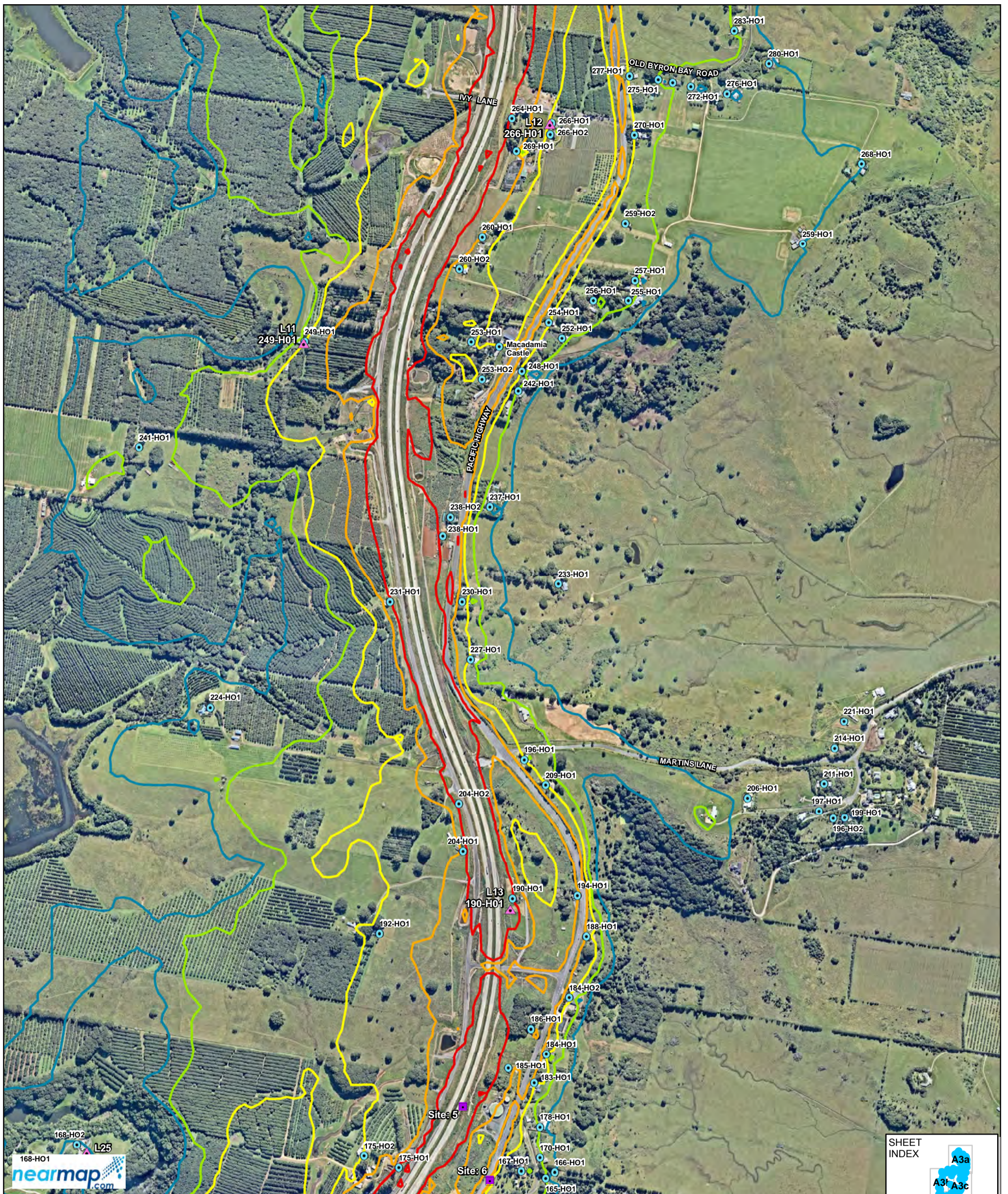


Roads and Maritime Services  
T2E Post Construction Noise Monitoring

Job Number 22-18466  
Revision 1  
Date 09 Feb 2017

**Predicted noise levels - night 2016** **Figure A3g**

N:\AU\Newcastle\Projects\22\18466\GIS\Maps\Deliverables\Appendix\Version2\2218466\_V2A04\_NoiseContour\_Night\_2016\_DDP\_1.mxd  
Level 3, GHD Tower, 24 Honeysuckle Drive, Newcastle NSW 2300 T 61 2 4979 9999 F 61 2 4979 9988 E ntlmail@ghd.com W www.ghd.com.au  
© 2017. Whilst every care has been taken to prepare this map, GHD and Nearmap make no representations or warranties about its accuracy, reliability, completeness or suitability for any particular purpose and cannot accept liability and responsibility of any kind (whether in contract, tort or otherwise) for any expenses, losses, damages and/or costs (including indirect or consequential damage) which are or may be incurred by any party as a result of the map being inaccurate, incomplete or unsuitable in any way and for any reason.  
Data source: Nearmap, Photomap, 2016. Created by: gmcdiamid, tmorton

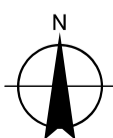
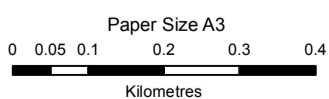


**LEGEND**

<b>Description of Monitoring</b>	<b>Sound pressure level, LAeq (9 hour)</b>
▲ Attended monitoring	45 dBA
△ Unattended monitoring	50 dBA
■ Traffic monitoring	55 dBA
☀ Weather Station	60 dBA
⊙ Receiver	65 dBA

**SHEET INDEX**

A3a
A3b
A3c
A3d
A3e
A3f
A3g
<b>A3h</b>
A3i



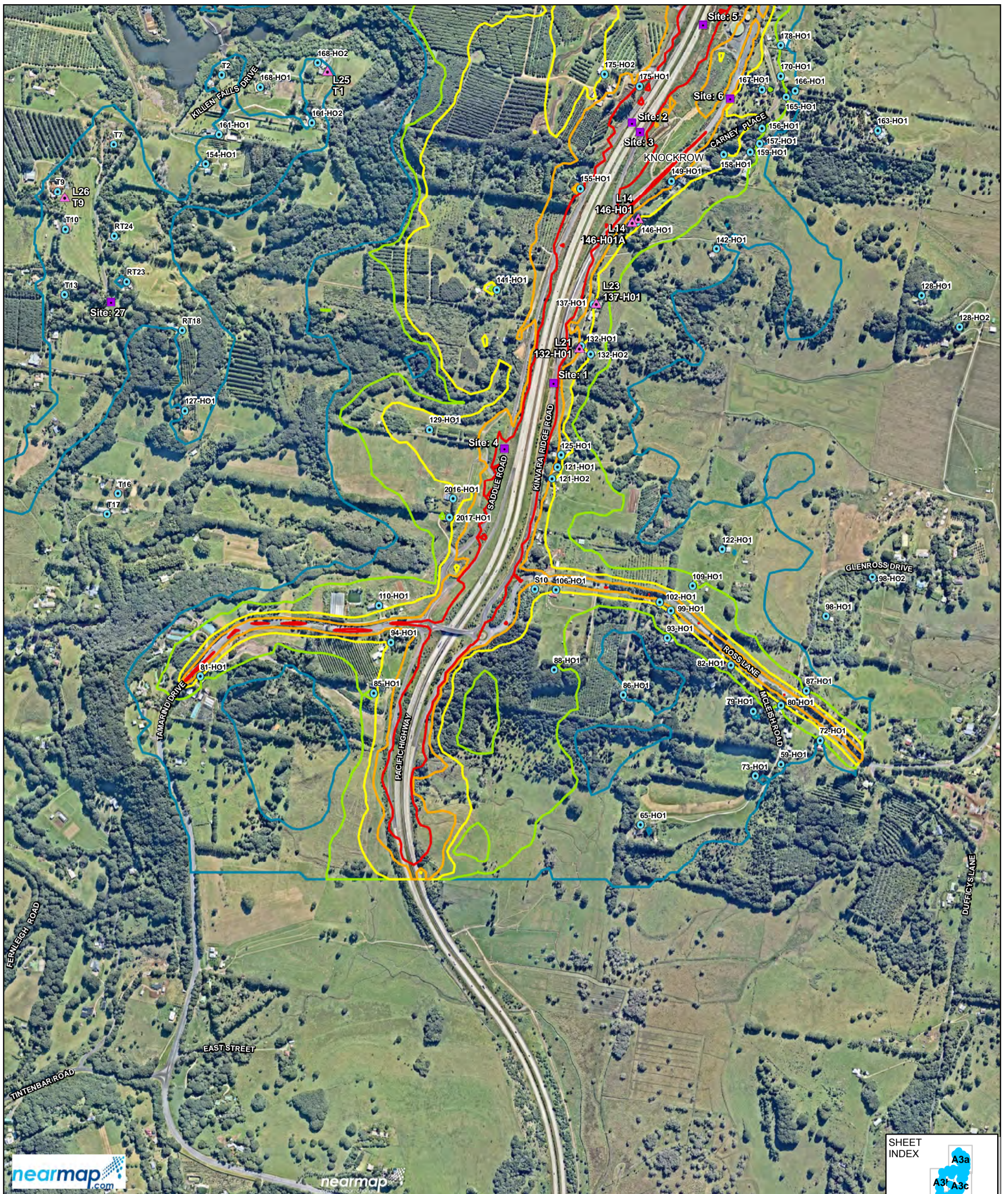
Map Projection: Transverse Mercator  
Horizontal Datum: GDA 1994  
Grid: GDA 1994 MGA Zone 56

Roads and Maritime Services  
T2E Post Construction Noise Monitoring

Job Number | 22-18466  
Revision | 1  
Date | 09 Feb 2017

**Predicted noise levels - night 2016**

**Figure A3h**



**LEGEND**

<b>Description of Monitoring</b>	<b>Sound pressure level, LAeq (9 hour)</b>
▲ Attended monitoring	45 dBA
△ Unattended monitoring	50 dBA
■ Traffic monitoring	55 dBA
☀ Weather Station	60 dBA
● Receiver	65 dBA

**SHEET INDEX**

A3a
A3b
A3c
A3d
A3e
A3f
A3g
A3h
<b>A3i</b>
A3j

Paper Size A3  
 0 0.05 0.1 0.2 0.3 0.4  
 Kilometres  
 Map Projection: Transverse Mercator  
 Horizontal Datum: GDA 1994  
 Grid: GDA 1994 MGA Zone 56



Roads and Maritime Services  
 T2E Post Construction Noise Monitoring

Job Number 22-18466  
 Revision 1  
 Date 09 Feb 2017

Predicted noise levels - night 2016

Figure A3i