
Warrell Creek to Nambucca Heads Upgrade Project

Stage 2b Pre-operational Compliance Report

Roads and Maritime Services | May 2018

Document control

Report name	Warrell Creek to Nambucca Heads - Stage 2b Pre-Operational Compliance Report
Document version	Revision 2.0
Date	22 May 2018



Contents

1	Introduction	1
1.1	Background	1
1.2	Statutory Context	1
1.3	Purpose of this report	4
Appendix A	MCoA Compliance Table.....	5
Appendix B	Statement of Commitments Compliance Table	52

Terms and Abbreviations

ACCIONA	ACCIONA Infrastructure Australia Pty Ltd
AFJV	ACCIONA and Ferrovial Joint Venture
CEMP	Construction Environmental Management Plan
DP&E	Department of Planning and Environment
EPA	Environment Protection Authority
EPL	Environment Protection Licence
ERG	Environmental Review Group
Ferrovial	Ferrovial Agroman (Australia) Pty Ltd
ISO	International Standards Organisation
MCoA	Ministers Conditions of Approval
NSW	New South Wales
OEH	Office of Environment and Heritage
Roads and Maritime	Roads and Maritime Services
SoC	Statement of Commitments
SWTC	Scope of Works and Technical Criteria
WC2NH	Warrell Creek to Nambucca Heads (the Project)

1 Introduction

1.1 Background

On behalf of the Australian and NSW governments, Roads and Maritime Services (Roads and Maritime) is constructing the Warrell Creek to Urunga Pacific Highway Upgrade (the project). The upgrade involves a 42 kilometre upgrade of the existing highway to a four lane divided highway from the existing Allgomera deviation, south of Warrell Creek to Waterfall Way at Raleigh. Figure 1-1 shows the location of the project.

The \$1.6 billion Warrell Creek to Urunga Pacific Highway Upgrade is being delivered in stages. Staging reports were prepared and submitted to the then Department of Planning and Infrastructure in accordance with MCoA A5.

The stages of the project, including the commencement of construction and anticipated opening to traffic, are:

- Nambucca Heads to Urunga (Stage 1) consisting of approximately 21.6km of new highway between Nambucca Heads, to the south of Nambucca Heads Interchange, at (Ch19500) and the existing Waterfall Way Interchange at Raleigh, north of Urunga. Stage 1 of the project opened to traffic in July 2016; and
- Warrell Creek to Nambucca Heads (Stage 2) involving the construction of approximately 19.5km of new highway between the existing Allgomera deviation south of Warrell Creek and extends to the southern extent of the NH2U stage 1.

The Department of Planning and Environment acknowledged receipt of the most recent update to the Staging Report on 4 October 2017 which described the scope of project staging for Stage 2 (Warrell Creek to Nambucca Heads) of the project to permit:

- the early opening to traffic of the section of Stage 2 between Scotts Head Road and Stage 1 of the project (providing a bypass of the townships of Macksville and Bellwood (Nambucca Heads)) referred to as Stage 2a; and
- the later opening to traffic of the remainder of Stage 2 referred to as Stage 2b (refer Figure 2-1).

1.2 Statutory Context

Roads and Maritime Services completed an environmental assessment of the Warrell Creek to Urunga Pacific Highway Upgrade (the Project EA) in January 2010. The Project EA identified a range of environmental, social and planning issues associated with the construction and operation of the Warrell Creek to Urunga Pacific Highway Upgrade and proposed measures to mitigate or manage those potential impacts.

The Project EA was publicly exhibited from 28 January to 29 March 2010 for a period of 60 days. Following public exhibition, submissions from stakeholders were received and addressed by RMS in the Submissions Report which was lodged with the Director-General in November 2010.

After consideration of the Project EA and Submissions Report, the Minister for Planning approved the Warrell Creek to Urunga Pacific Highway Upgrade under Section 75J of the Environmental Planning and Assessment Act 1979 (EP&A Act) on 19 July 2011 subject to the Minister's Conditions of Approval (CoA) being met.

Approval was also granted under Part 9 of the Environment Protection and Biodiversity Conservation (EPBC) Act 1999 for the Warrell Creek to Nambucca Heads Pacific Highway upgrade (EPBC 2013/7101) on 11 December 2014.

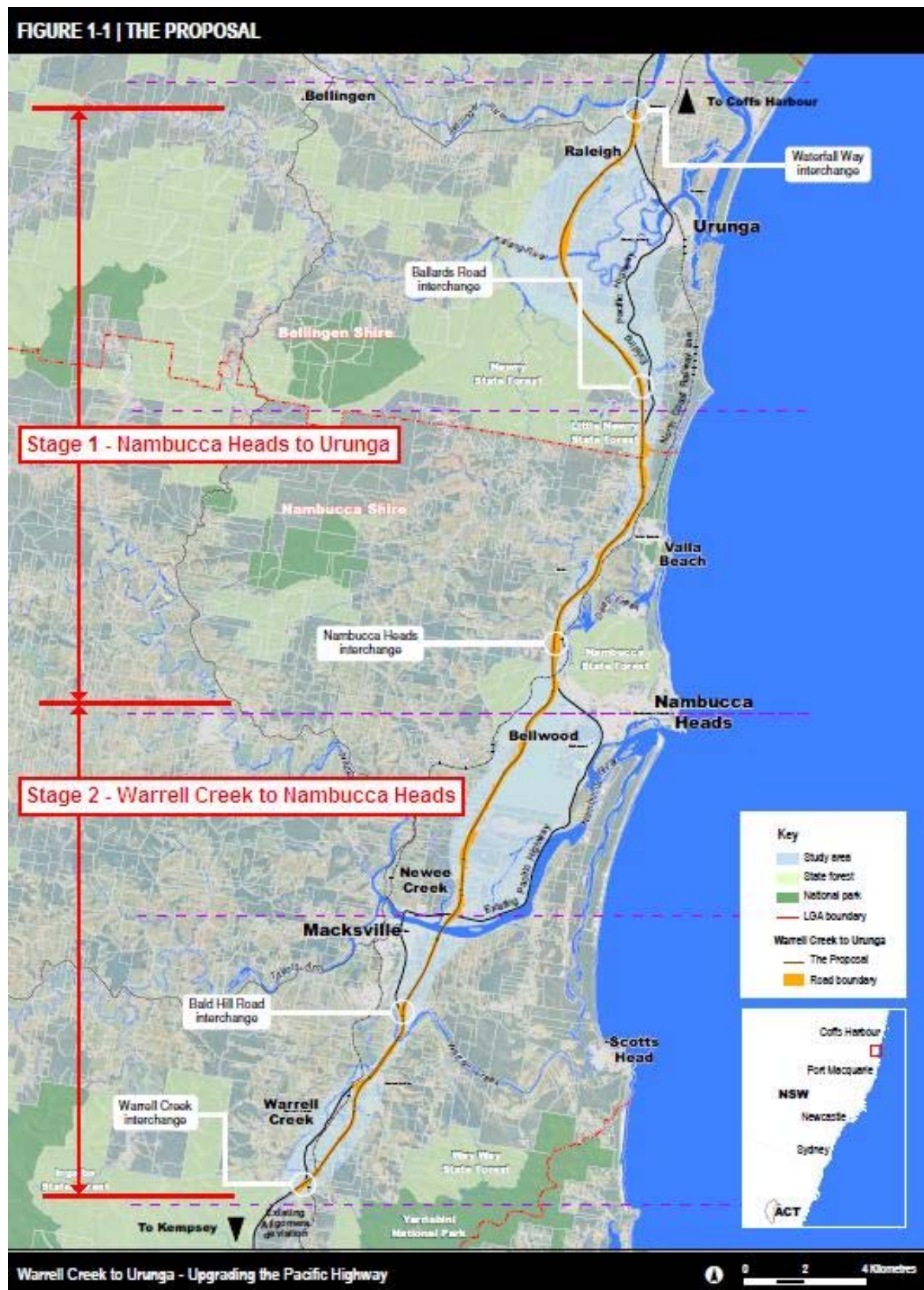


Figure 1.1. The two stages of work planned for the Warrell Creek to Urunga project.

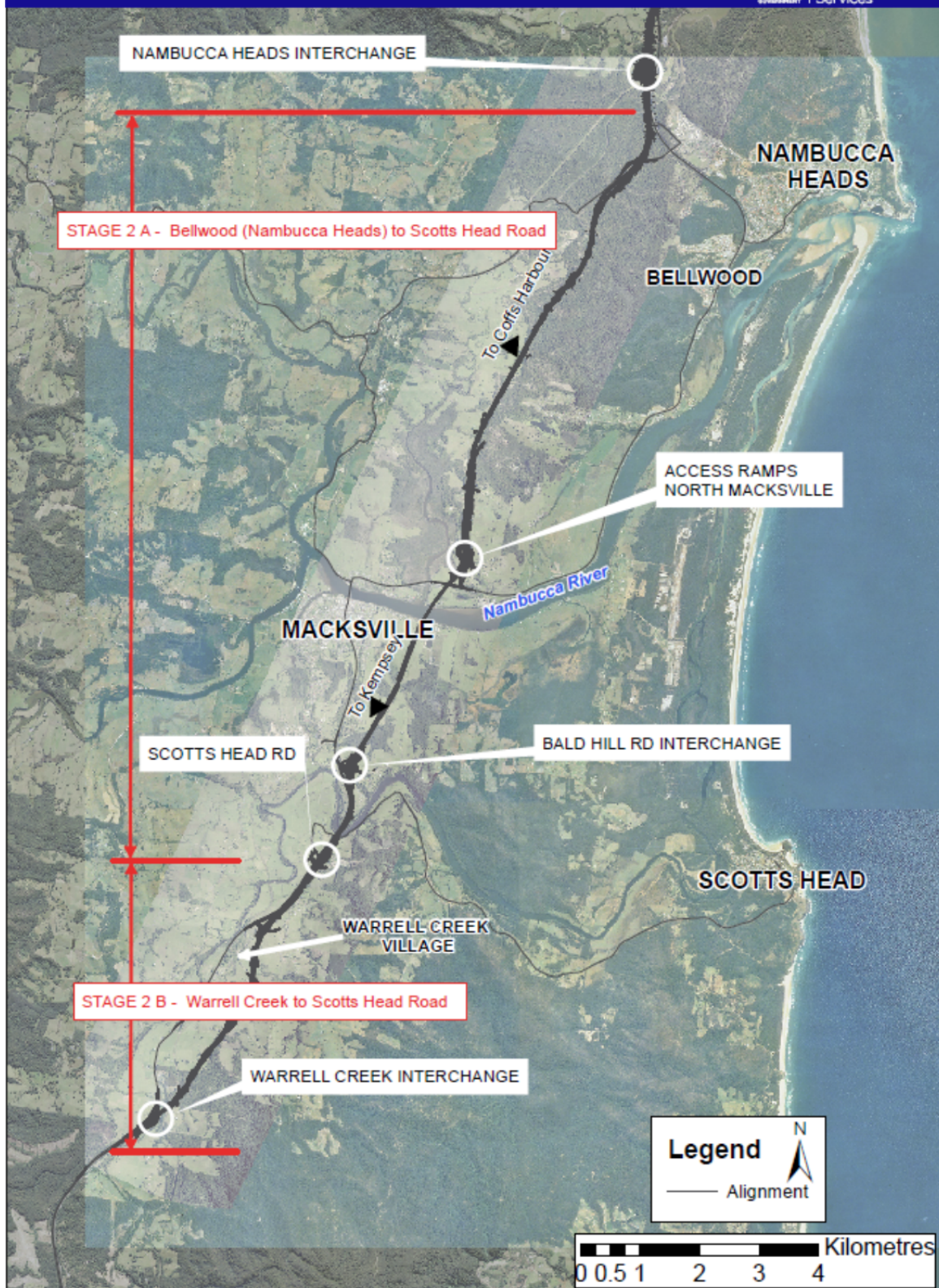


Figure 2.1. The two partial opening stages of the Warrell Creek to Nambucca Heads Stage.

1.3 Purpose of this report

This report has been prepared to address MCoA B25(c) of the planning approval (MCoA) that deals primarily with compliance matters. Under MCoA B25(c) a report outlining the status of compliance must be provided to the Director General at least one month prior to the commencement of operation of each stage of the project. Stage 1 of the project opened to Traffic in July 2016. Stage 2a of the project opened to traffic on 19 December 2017.

In accordance with the requirements of MCoA B25(c), this pre-operational compliance report addresses the status of compliance with:

- The Minister Conditions of Approval
- Documents listed under MCoA 1A, including the revised Statement of Commitments.

This report addresses requirements that are relevant to Stage 2b of the project.

Appendix A lists the MCoA requirements and subsequent modifications to the approval.

Appendix B lists the Roads and Maritime revised Statement of Commitments.

Against each approval requirement or commitment, the report details the status of compliance against the requirement

- The status of compliance against the requirement
- The effective close out date for the requirement where relevant to Stage 2.

Some approval requirements or commitments are either not relevant, or extend beyond the opening of the project to traffic. Where this is the case, a note to that affect is provided.

Appendix A MCoA Compliance Table

MCo A	Requirement	Status / Reference	Comment
ADMINISTRATIVE CONDITIONS			
A1	<p>The Proponent shall carry out the project generally in accordance with the:</p> <ul style="list-style-type: none"> a Major Projects Application 07_0112; b Upgrading the Pacific Highway – Warrell Creek to Urunga – Environmental Assessment (Volumes 1 and 2), prepared by Sinclair Knight Merz Pty Ltd for the NSW Roads and Traffic Authority and dated January 2010; c Upgrading the Pacific Highway – Warrell Creek to Urunga – Environmental Assessment Submissions and Preferred Project Report, prepared by the NSW Roads and Traffic Authority and dated November 2010; d Letter from the NSW Roads and Traffic Authority titled Pacific Highway Upgrade – Warrell Creek to Urunga Upgrade Addendum to Submissions Report – Fauna Crossing Structures, dated 25 May 2011 and accompanying attachments and Letter from the NSW Roads and Traffic Authority titled Pacific Highway Upgrade – Warrell Creek to Urunga Upgrade Addendum to Submissions Report – Fauna Crossing Structures, dated 1 June 2011 and accompanying attachment; e The Roads and Maritime Services modification request and letter dated 23 October 2012 (07_0112 MOD1); f The Roads and Maritime Services modification request and letter dated 23 November 2012 to correct a minor error in condition C28 (07_0112 MOD2); g The Roads and Maritime Services modification request and letter dated 18 January 2013 to correct minor errors in condition A1 (07_0112 MOD3); h The Roads and Maritime Services modification request and letter dated 13 February 2013 to amend the definition of construction in Schedule 1 (07_0112 MOD4); i The Roads and Maritime Services modification request and letter dated 9 September 2013 to amend the heritage management requirements in conditions C16 and C27 (07_0112 MOD5); j The Roads and Maritime Services modification request and letter dated 	<p>Roads and Maritime has identified relevant commitments, obligations, undertakings and requirements (COURs) in the environmental assessment and approval documentation for the Warrell Creek to Urunga Project. A COURs database has been developed; the database will assist Roads and Maritime to manage compliance and contractual risk.</p> <p>Further confirmation has been provided through the compliance reporting and independent audit program developed in response to condition B25. Ongoing operational requirements as they relate to Stage 2, subject to this condition, will be incorporated into Roads and Maritime's existing operational management systems.</p> <p>Stage 2a was opened to traffic on 19 December 2017. It is anticipated that the remainder of the project will open in its entirety on approximately 29 June 2018.</p>	<p>Open</p> <p>To be closed when all requirements of this approval have been fulfilled.</p>

MCo A	Requirement	Status / Reference	Comment
	<p>12 February 2014 to delete reference to 'vegetation group remnant forest' conservation area in condition C15 (07_0112 MOD6);</p> <p>k The Roads and Maritime Services modification request and letter dated 29 October 2014 to delete reference to four cultural sites in condition C14 (07_0112 MOD7);</p> <p>l The Roads and Roads and Maritime Services modification request and letter dated 21 March 2016 and Pacific Highway Upgrade – Warrell Creek to Nambucca Heads North Macksville Ramps – Modification Environmental Assessment, prepared by Arup Aurecon Design Joint Venture and dated March 2016; and</p> <p>m The conditions of this approval.</p>		
A2	<p>In the event of an inconsistency between:</p> <p>a the conditions of this approval and any document listed from condition A1(a) to A1(j) inclusive, the conditions of this approval shall prevail to the extent of the inconsistency; and;</p> <p>b any document listed from condition A1 (a) to A1 (j) inclusive, and any other document listed from condition A1 (a) and A1 (j) inclusive, the most recent document shall prevail to the extent of the inconsistency.</p>	Noted	<p>Open</p> <p>To be closed when all requirements of this approval have been fulfilled.</p>
A3	<p>The Proponent shall comply with any reasonable requirement(s) of the Director General arising from the Department's assessment of:</p> <p>a any reports, plans or correspondence that are submitted in accordance with this approval; and</p> <p>b the implementation of any actions or measures contained within these reports, plans or correspondence.</p>	Noted	<p>Open</p> <p>To be closed following completion of construction of the entire Project in mid to late 2018.</p>
A4	<p>Subject to confidentiality, the Proponent shall make all documents required under this approval available for public inspection on request.</p>	<p>A project website has been established and is accessible through the Roads and Maritime corporate website. The website is updated at regular intervals and contains information, as a minimum, required by MCoA B26. Any documentation unable to be made available through the project website and not subject to restrictions imposed by confidentiality, will be made available upon request at a nominated project site</p>	<p>Open</p> <p>To be closed following completion of construction of the entire Project in mid to late 2018.</p>

MCo A	Requirement	Status / Reference	Comment
		office or Roads and Maritime regional office.	
A5	<p>The Proponent may elect to construct and/ or operate the project in stages. Where staging of the project is proposed, these conditions of approval are only required to be complied with at the relevant time and to the extent that they are relevant to the specific stages of works. Where staging is proposed, the Proponent shall submit a Staging Report to the Director General prior to the commencement of the first proposed stage, which provide details of:</p> <ul style="list-style-type: none"> <i>a</i> how the project would be staged including general details of work activities associated with each stage and the general timing of when each stage would commence; and <i>b</i> details of the relevant conditions of approval, which would apply to each stage and how these shall be complied with across and between the stages of the project. <p>The Proponent shall ensure that an updated Staging Report (or advice that no changes to staging are proposed) is submitted to the Director General prior to the commencement of each stage, identifying any changes to proposed staging or applicable conditions.</p> <p>The Proponent shall ensure that relevant plans, sub-plans and other management documents required by the conditions of this approval relevant to each stage (as identified in the Staging Report) are submitted to the Director General no later than one month prior to the commencement of the relevant stages, unless an alternative timeframe is agreed to by the Director General.</p>	<p>Initial staging report issued to DP&E on 12 March 2013 in regards to Stage 1 and Stage 2, Stage 2 being Warrell Creek to Urunga. Updated staging report for Stage 2 (2.1 and 2.2) issued to DP&E on 19 February 2014. DP&E responded 23 March 2014 noting the staging report satisfactorily addressed requirements of MCoA A5.</p> <p>An updated Staging Report was submitted to DP&E on the 14th September 2017 and approval obtained from DP&E on the 5 October 2017. The updated staging report described the scope of project staging for Stage 2 (Warrell Creek to Nambucca Heads) of the project to permit:</p> <ul style="list-style-type: none"> * the early opening to traffic of the section of Stage 2 between Scotts Head Road and Stage 1 of the project (providing a bypass of the townships of Macksville and Bellwood (Nambucca Heads)) referred to as Stage 2a; and * the later opening to traffic of the remainder of Stage 2 referred to as Stage 2b. 	<p>Open</p> <p>To be closed following opening of the entire Project in mid-2018.</p>

MCo A	Requirement	Status / Reference	Comment
A6	The Proponent shall ensure that all necessary licences, permits and approvals required for the development of the project are obtained and maintained as required throughout the life of the project. No condition of this approval removes the obligation for the Proponent to obtain, renew or comply with such necessary licences, permits or approvals except as provided under Section 75U of the Act. This shall include relevant certification requirements in accordance with section 109R of the Act.	Roads and Maritime, and its construction partner, have obtained all necessary licenses and approvals relevant to Stage 2 of the project.	Open To be closed following completion of construction of the entire Project in mid to late 2018 and following the surrender of licenses (eg EPA licence) and permits in effect at that time.
A7	This approval shall lapse ten years after the date on which it is granted, unless construction works the subject of this project approval are physically commenced on or before that date.	Construction for WC2NH commenced on 9 February 2015	Closed
A8	The Proponent shall implement the bridge crossing option (Option 2 in the Environmental Assessment) to traverse the floodplain from the northern bank of the Nambucca River to the existing Pacific Highway.	Option 2 has been adopted and has been incorporated into the detailed design of the Nambucca River bridge structure. Construction has commenced on 9 February 2015 with construction commencing on the Nambucca Bridge structure in July 2015.	Closed
A9	The proposed trailer exchange facility located in the vicinity of the Nambucca Heads rest area does not form part of this approval.	Not included within the scope of works of this Project	NA
PRIOR TO CONSTRUCTION			
B1	The Proponent shall implement the fauna and waterway crossings identified in the documents listed under condition A1 (d) at the locations and in accordance with the minimum design dimensions identified in the documents listed under condition A1 (d), unless otherwise agreed to by the Director General.	Fauna crossing structures and waterway crossings have been designed to address the minimum requirements in the letter "Pacific Highway Upgrade – Warrell Creek to Urunga Upgrade Addendum to Submission Report – Fauna Crossing Structures (25/5/11)" referred to in condition A1 (d) and progressed by AFJV in detailed design with ecological input. Consultation has been undertaken with EPA, DPI and DoE. Structures have been refined in consultation with EPA and DPI (Fisheries); several locations of the	Closed

MCo A	Requirement	Status / Reference	Comment
		<p>combined and dedicated structures have been moved as a result of this consultation. Specific fauna crossings/ fish passage requirements outlined within SWTC App 4.5 and Table 4.1 as well as SWTC App 5.</p> <p>Initial fauna and fish design discussions were held with EPA and DPI on 18 June 2014 (ERG 2).</p> <p>Onsite investigation / walkthrough with EPA, DoE and experienced ecologists to determine fauna crossing arrangements was undertaken in Aug 2014. The outcomes of this meeting were used to update the SWTC Table 4.1 to ensure the most appropriate underpass locations were identified and carried through into the design.</p> <p>The Design is based on the updated Table 4.1 of the SWTC. The detailed design has been issued to the EPA and DPI (Fisheries) for comment and has also been discussed at ERG meetings.</p> <p>A Fauna Connectivity report was provided to the Director General in accordance with Condition B3 prior to the commencement of construction of the fauna connectivity structures, this was sent to DP&E by RMS on 17/7/2015. A letter confirming compliance was received by DP&E on the 21st April 2016.</p> <p>Construction of the crossings has been undertaken in accordance with the approved design and above referenced report.</p>	
B2	As part of detailed design, the Proponent shall further investigate design refinements to improve fauna connectivity between Chainages 19150 and 19820.	Note that chainages referred to in the approval are based the chainages from the Environmental Assessment (EA). During construction chainages will be based on a distance north of Kempsey, the correction factor for this is an additional chainage of 41765.	Closed

MCo A	Requirement	Status / Reference	Comment
		<p>Roads and Maritime proposed to increase the widened median area from 2500 m2 to 7500 m2 in ERG 2 (June 2014) and have agency comments in regard to this. The SWTC requires the addition of three crossing points (two glider poles and 1 rope ladder) to be installed within the widened median area. A pre-clearing assessment of the potential glider trees has been undertaken by Geolink. The potential glider trees have been identified to be retained.</p> <p>Post mainline clearing a Widened Median Detailed Glidability Assessment was completed on the 18/1/16 by Geolink (in consultant with Ross Goldingay) on behalf of AFJV to determine the retained glider trees and number of crossing points.</p> <p>The assessment determined that due to the existing terrain causing the carriageways to remain grade separated, the opportunities for two-way complete alignment crossing points is limited. The retained glider crossing trees allowed movements in a mostly west-east direction with minimal crossing points in an east-west direction. Only 2 crossing points were identified between chainages 59620 and 61180 utilising vegetation retained in the widened median. In both of these circumstances, movement of gliders is from west to east only. No movement east to west across both carriageways was demonstrated in the calculations.</p> <p>A workshop was held on site (2/6/16) with Pacifico, RMS and the EPA to discuss the potential for additional glider crossing points including glider poles and rope bridges.</p> <p>Roads and Maritime have approved a total of 3 rope bridges and 4 sets of glider poles creating 7 crossing points. This is an additional 4 crossing points to the original 3 proposed as part of the SWTC. The design and construction of the additional crossing points is</p>	

MCo A	Requirement	Status / Reference	Comment
		<p>being undertaken by AFJV with the support of RMS.</p> <p>Three additional dedicated fauna connectivity culverts have been installed. The details have been included in the Fauna Connectivity Report provided to DP&E in July 2015. A letter confirming compliance was received from DP&E on the 21st April 2016.</p>	
B3	<p>All investigations into fauna crossings design undertaken during detailed design (with respect to the crossing design and locations identified in conditions B1 and B2 shall be undertaken with the input of a qualified and experienced ecologist and in consultation with EPA and DPI (Fisheries) through a process of workshops and on-site ground verification. Where detailed design refinements are made, the Proponent shall prior to the commencement of construction of the relevant crossings, submit a report to the Director General identifying the final design of the fauna crossings and demonstrating consistency with the locations and minimum design parameters identified in the documents listed under condition A1 (d) or where there have been changes, how the new location and/ or design would result in a better biodiversity outcome. The report shall also clearly identify how the fauna crossings structures will work in conjunction with complementary fauna exclusion fencing measures to be implemented for the project. The report must be accompanied by evidence of consultation with EPA and DPI (Fisheries) in relation to the suitability of any changes to the crossings design.</p>	<p>Initial fauna and fish design discussions with EPA and DPI (Fisheries) were held on 18 June 2014 (ERG 2).</p> <p>Onsite investigation / walkthrough with EPA, DoE and experienced ecologists to determine fauna crossing arrangements was undertaken in Aug 2014. The outcomes of this meeting were used to update the SWTC Table 4.1 to ensure the most appropriate underpass locations were identified and carried through into the design.</p> <p>The Design has progressed based on the updated Table 4.1 of the SWTC. The detailed design was provided to the EPA and Fisheries for comment and was also discussed during ERG meetings.</p> <p>There are SWTC App 4.5 / SWTC App 5 requirements in regards to fauna fencing. The fauna fencing locations have been revised based on advice from Roads and Maritime to address comments raised by DoE. The location of revised fauna fencing was discussed at the ERG meeting in August and September 2014. The revised fauna fencing locations were agreed in principle with the EPA during the ERG to progress the detailed design.</p> <p>A review of the locations of the fauna drop down structures has been undertaken, and final locations have been determined. A refined design of the structure has also been accepted by RMS. The installation of the structures is ongoing with the installation of the fencing and shall be completed prior to operation of Stage 1, Stage 2A and Stage 2B,</p>	Closed

MCo A	Requirement	Status / Reference	Comment
		<p>respectively.</p> <p>The Fauna Connectivity Report was submitted to DP&E in accordance with the approval conditions on 17th July 2015. A letter confirming compliance was received from DP&E on the 21st April 2016.</p> <p>Additional fauna fencing has been incorporated into the design of the Project at the request of the EPA between Floodplain Bridge 1 and Floodplain Bridge 2 on the Gumma Floodplain to ensure fauna species are directed to the designated fauna crossing points underneath the plank bridges on the floodplain.</p>	
B4	<p>The Proponent shall in consultation with EPA, ensure that the design of the project as far as feasible and reasonable, incorporates provision for glider crossings (such as widened medians and maintenance or enhancement of habitat within the medians and corresponding carriageway boundaries) where the alignment crosses areas of recognised glider habitat.</p>	<p>See response provided for condition B1.</p>	<p>Closed</p>
B5	<p>The Proponent shall in consultation with DPI (Fisheries) ensure that all waterway crossings are designed and constructed consistent with the principles of the <i>Guidelines for Controlled Activities Watercourse Crossings (DWE)</i>, <i>Fish Note: Policy and Guidelines for Fish Friendly Waterway Crossings (NSW Fisheries)</i> and <i>Policy and Guidelines for Design and Construction of Bridges, Roads, Causeways, Culverts and Similar Structures (NS14/ Fisheries)</i>. As far as feasible and reasonable, culvert replacements as part of the project shall incorporate naturalised bases and where multiple cell culverts are proposed for creek crossings, shall include at least one cell for fish passage, with an invert or bed level that mimics creek flows.</p>	<p>Temporary and permanent waterway crossings associated with Stage 2 were designed to fulfill the requirements of this condition. See further detailed provided in response to conditions B1.</p>	<p>Open</p> <p>Closed for Stage 2a. To be closed following completion of construction of the entire Project in mid to late 2018</p>

MCo A	Requirement	Status / Reference	Comment
B6	<p>Prior to the commencement of any construction work that would result in the disturbance of any native vegetation (or as otherwise agreed to by the Director General), the Proponent shall in consultation with EPA prepare and submit for the approval of the Director General a Nest Box Plan to provide replacement hollows for displaced fauna consistent with the requirements of SoC F7. The plan shall detail the number and type of nest boxes to be installed which must be justified based on the number and type of hollows removed (based on detailed pre-construction surveys), the density of hollows in the area to be cleared and adjacent forest, and the availability of adjacent food resources. The plan shall also provide details of maintenance protocols for the nest boxes installed including responsibilities, timing and duration.</p>	<p>The Nest Box plan prepared by Roads and Maritime was approved by DP&E on 20/03/2013.</p>	<p>Open</p> <p>To be closed 4 years following completion of construction of the entire Project in mid to late 2018</p>
B7	<p>Prior to the commencement of any construction work that would result in the disturbance of <i>Amorphospermum whitei</i> and <i>Marsdenia longiloba</i>, the Proponent shall in consultation with the EPA develop a management plan for these species which:</p> <p>investigates the potential for the translocation of plants impacted by the project; if investigation under Condition B7(a) reveals translocation of impacted plants is feasible, includes details of a translocation plan for the plants consistent with the Australian Network for Plant Conservation 2nd Ed 2004: Guidelines for the Translocation of Threatened Species in Australia, including details of ongoing maintenance such as responsibilities, timing and duration; identifies a process for incorporating appropriate compensatory habitat for the impacted plants in the Biodiversity Offset Strategy referred to in Condition B8 should the information obtained during the investigation referred to in Condition B7(a) find that translocation is not feasible or where the monitoring undertaken as part of condition B10 finds that translocation measures have not been successful (as identified through performance criteria); and includes detail of mitigation measures to be implemented during construction to avoid and minimise impacts to areas identified to contain these species, including excluding construction plant, equipment, materials and unauthorised personnel.</p> <p>Unless otherwise agreed to by the Director General, the Plan shall be submitted for the Director General's approval prior to the commencement of any construction work that would result in the disturbance of <i>Amorphospermum whitei</i> and <i>Marsdenia longiloba</i>.</p>	<p>Open Potential impacts to <i>Amorphospermum whitei</i> and <i>Marsdenia longiloba</i> are incorporated into the Threatened Flora Management Plan (Ver 4) (TFMP) which was provided to DP&E and approved on the 16/12/14.</p> <p>The TFMP was further updated on the 24/12/14 to incorporate comments from the Federal Department of Environment (Ver 5). A minor change to the TFMP to incorporate an additional monitoring event for November 2016 (as only 3 monitoring events were completed in year 1 of construction) was accepted by the ER in June 2016.</p>	<p>Closed</p>

MCo A	Requirement	Status / Reference	Comment
B8	<p>The Proponent shall, in consultation with the EPA and DPI (Fisheries), develop a Biodiversity Offset Strategy that identifies available options for offsetting the biodiversity impacts of the project in perpetuity, with consideration to EPA's <i>Principles for the Use of Biodiversity Offsets in NSW</i> (EPA Website, June 2011). Unless otherwise agreed to by EPA, offsets shall be provided on a like-for-like basis and at a minimum ratio of 4:1 for areas of high conservation value (including EEC and threatened species or their habitat identified in the Environmental Assessment to be impacted by the project and poorly conserved vegetation communities identified as being more than 75% cleared in the catchment management area) and 2:1 for the remainder of native vegetation areas (including mangroves, seagrass, salt marsh and riparian vegetation). The Strategy shall include, but not necessarily be limited to:</p> <ul style="list-style-type: none"> a confirmation of the vegetation communities/ habitat (in hectares) to be offset and the size of offsets required (in hectares); b details of the available offset measures that have been identified to compensate for the biodiversity impacts of the project, such as (but not necessarily limited to): suitable compensatory land options and/ or contributions towards biodiversity programs for high conservation value areas on nearby lands (including research programs). Where the use of State Forest land managed in accordance with an Integrated Forestry Operations Approval is proposed to offset biodiversity impacts, the Proponent shall clearly demonstrate how this would provide the biodiversity outcomes required under this condition including any additional offset requirements to cover residual impacts; c the decision-making framework that would be used to select the final suite of offset measures to achieve the aims and objectives of the Strategy, including the ranking of offset measures; d a process for addressing and incorporating offset measures for changes to impact (where these changes are generally consistent with the biodiversity impacts identified for the project in the documents listed under condition A1, including: <ul style="list-style-type: none"> i. changes to footprint due to design changes; ii. changes to predicted impacts resulting from changes to mitigation measures; 	<p>Roads and Maritime have developed a Biodiversity Offset Strategy to address the requirements of this condition in consultation with OEH and DPI (Fishing and Aquaculture). Comments were received from DP&E on the draft Biodiversity Offset Strategy for Warrell Creek to Urunga (12 September 2013, April 2014).</p> <p>The final Biodiversity Offset Strategy was submitted to DP&E on 23/10/2014 for approval</p> <p>DP&E approved the WC2U Biodiversity Offset Strategy on the 24 November 2014.</p>	<p>Closed 24 November 2014.</p>

MCo A	Requirement	Status / Reference	Comment
	<p><i>iii.</i> identification of additional species/habitat through pre-clearance surveys; and</p> <p><i>iv.</i> additional impacts associated with ancillary facilities; and</p> <p>e options for the securing of biodiversity options in perpetuity.</p> <p>The Biodiversity Offset Strategy shall be submitted to, and approved by, the Director General prior to the commencement of any construction work that would result in the disturbance of any native vegetation, unless otherwise agreed by the Director General. Unless otherwise agreed, the Biodiversity Offset Strategy shall be submitted to the Director General for approval no later than 6 weeks prior to the commencement of any construction that would result in the disturbance of any native vegetation.</p> <p>The Proponent may elect to satisfy the requirements of this condition by implementing a suitable offset package which addresses impacts from multiple Pacific Highway Upgrade projects (including the Warrell Creek to Urunga Project) within the North Coast Bio-region. Any such agreement made with the EPA must be made in consultation with the Department and approved by the Director General within a timeframe agreed to by the Director General.</p>		
B9	<p>Within two years of the approval of the Biodiversity Offset Strategy, unless otherwise agreed by the Director General, the Proponent shall prepare and submit a Biodiversity Offset Package which identifies the final suite of offset measures to be implemented for the project for the approval of the Director General. The Package shall be developed in consultation with EPA, and shall provide details of:</p> <p>a the final suite of the biodiversity offset measures selected for the project demonstrating how it achieves the requirements and aims of the Biodiversity Offset Strategy (including specified offset ratios);</p> <p>b the final selected means of securing the biodiversity values of the offset package in perpetuity including ongoing management, monitoring and maintenance requirements; and</p> <p>c timing and responsibilities for the implementation of the provisions of the package over time.</p> <p>The requirements of the Package shall be implemented by the responsible</p>	<p>Roads and Maritime have engaged a suitably qualified and experienced ecological consultant to identify and assess requisite lands to fulfill the requirements of the approved Biodiversity Offset Strategy. The WC2NH Biodiversity Offset Package was approved by DP&E on 13 June 2017.</p>	<p>Closed 13 June 2017</p>

MCo A	Requirement	Status / Reference	Comment
	parties according to the timeframes set out in the Package.		
B10	<p>Prior to the commencement of any construction work that would result in the disturbance of any native vegetation, the Proponent shall develop an Ecological Monitoring Program to monitor the effectiveness of the mitigation measures implemented as part of the project. The program shall be developed in consultation with EPA and prepared by a suitably qualified ecologist and shall include but not necessarily be limited to:</p> <ul style="list-style-type: none"> a an adaptive monitoring program to assess the effectiveness of the mitigation measures identified in condition B1 to B6, B7(b), B7(d), B21(c) and B31(b) and allow amendment to the measures if necessary. The monitoring program shall nominate appropriate and justified monitoring periods and performance targets against which effectiveness will be measured. The monitoring shall include operational road kill surveys to assess the effectiveness of fauna crossing and exclusion fencing implemented as part of the project; b mechanism for developing additional monitoring protocols to assess the effectiveness of any additional mitigation measures implemented to address additional impacts in the case of design amendments or unexpected threatened species finds during construction (where these additional impacts are generally consistent with the biodiversity impacts identified for the project in the documents listed under condition A1; c monitoring shall be undertaken during construction (for construction-related impacts) and from opening of the project to traffic (for operation/ongoing impacts) until such time as the effectiveness of mitigation measures can be demonstrated to have been achieved over a minimum of five successive monitoring periods (i.e. 5 years) after opening of the project to traffic, unless otherwise agreed to by the Director General. The monitoring period may be reduced with the agreement of the Director General in consultation with EPA, depending on the outcomes of the monitoring; d provision for the assessment of the data to identify changes to habitat usage and if this can be attributed to the project; e details of contingency measures that would be implemented in the event of changes to habitat usage patterns directly attributable to the 	<p>Ecological Monitoring Program for WC2NH has been finalised and submitted to DP&E for approval on the 25/11/14. All EPA comments have been addressed as part of the final Ecological Monitoring Program. The Ecological Monitoring Program was approved by DP&E on the 16/12/14.</p> <p>The Ecological Monitoring Program has been implemented on site.</p>	<p>Open</p> <p>To be closed following the completion of operational ecological monitoring program (anticipated to be the spring of 2028)</p>

MCo A	Requirement	Status / Reference	Comment
	<p>construction or operation of the project; and</p> <p>f provision for annual reporting of monitoring results to the Director General and EPA, or as otherwise agreed by those agencies.</p> <p>The Program shall be submitted for the Director General's approval prior to the commencement of any construction work that would result in the disturbance of any native vegetation. Unless otherwise agreed, the Program shall be submitted to the Director General for approval no later than 6 weeks prior to the commencement of any construction that would result in the disturbance of any native vegetation.</p>		
B11	<p>The Proponent shall undertake further flood modelling during detailed design to ensure that the Nambucca River crossing is designed and constructed with the aim of not exceeding the afflux and other flood characteristics predicted in the Environmental Assessment and Response to Submissions.</p>	<p>The Flood Modelling and Hydrology Report for the Nambucca River and Floodplain were provided to DP&E on the 23/04/15 for review. This document aims to demonstrate compliance with Conditions B11, B12, B13, B14 and B15. The ER endorsed the report and confirmed compliance with Conditions B11-B15 on the 23/04/15. RMS provided AFJV with written approval to commence works within the floodplain on the 24/04/15.</p> <p>Comments from DP&E were received on the 22/05/15 which was addressed by AFJV and a revised report submitted to DP&E on 24th July 2015. DP&E approval obtained on 10/8/2015.</p> <p>No changes to the document or the design has occurred between Compliance Tracking Report #5 and this report.</p>	Closed on 10 August 2015
B12	<p>Prior to the commencement of construction within areas affected by an increased afflux from the project, the Proponent shall in consultation with the EPA, DPI (Fisheries) and Nambucca Shire Council undertake flood modelling of the Nambucca River and floodplain based on the detailed design of the project, and submit the flood modelling report for the approval of the Director General. The flood modelling shall:</p> <p>a assess the impacts of the project on flood behaviour (in relation to Nambucca River and floodplain;</p>	See response provided for condition B11.	Closed

MCo A	Requirement	Status / Reference	Comment
	<ul style="list-style-type: none"> b confirm the location and size of structures for the crossing the Nambucca River and floodplain which meet the performance criteria outlined in Condition B11; c examine flood behaviours through the full range of flood events including but not limited to the 10%, 5%, 2%, 1% 0.5% and 0.2% Annual Exceedance Probability; d examine any changes in the flood behaviour under climate change conditions; and e examine any changes to existing conditions for flood timing, afflux, inundation, flood velocity, scour and siltation flood warning and flood evacuation strategies including stock. 		
B13	<p>Prior to commencement of construction within areas affected by an increased afflux from the Nambucca River and Kalang River crossings, the Proponent shall submit a hydrological mitigation report for the approval of the Director General detailing all feasible and reasonable flood mitigation measures for all properties where flood impacts are predicted to increase as a result of the project. The Report shall be based on detailed floor level survey and associated assessment of potentially flood affected properties. The report shall:</p> <ul style="list-style-type: none"> a identify all properties likely to have an increased flooding impact and detail the predicted increased flooding impact; b identify mitigation measures to be implemented where increased flooding is predicted to adversely affect access, property or infrastructure; c identify measures to be implemented to minimise scour and dissipate energy at locations where flood velocities are predicted to increase as a result of the project and cause localised soil erosion and/or pasture damage; d be developed in consultation with EPA, the relevant Council, NSW State Emergency Service and directly-affected property owners; and e identify operational and maintenance responsibilities for items (a) to (e) inclusive. <p>The Proponent shall not commence construction of the project on or within</p>	See response provided for condition B11.	Closed

MCo A	Requirement	Status / Reference	Comment
	areas likely to alter flood conditions until such time as works identified in the hydrological mitigation report have been completed, unless otherwise agreed by the Director General.		
B14	Based on the mitigation measures identified in condition B13, the Proponent shall prepare a final schedule of feasible and reasonable flood mitigation measures proposed at each directly affected property in consultation with the property owner. The schedule shall be provided to the relevant property owner(s) no later than two months prior to the implementation of the mitigation works, unless otherwise agreed by the Director General. A copy of each schedule of flood mitigation measures shall be provided to the relevant Council and the Department prior to the implementation / construction of the mitigation measures on the property.	See response provided for condition B11.	Closed
B15	In the event that the Proponent and the relevant property owner cannot agree on feasible and reasonable flood mitigation measures to be applied to a property within one month of the first consultation on the measures (as required under Condition B14), the Proponent shall employ a suitably qualified and experienced independent hydrological engineer (who has been approved by the Director General for the purposes of this condition prior to the commencement of construction) to advise and assist affected property owners in negotiating feasible and reasonable mitigation measures.	WMA are the project hydrological consultant used for independent review/ comment of designs eg. the B12/B13 report as approved	Open To be closed following completion of construction of the entire Project in mid to late 2018.
B16	The Proponent shall provide assistance to the relevant Council's and/ or NSW State Emergency Service to prepare any new or necessary update(s) to the relevant plans and documents in relation to flooding, to reflect changes in flooding levels, flows and characteristics as a result of the project, as identified in the documents listed under condition A1 and the modelling undertaken as part of condition B12.	AFJV provides Roads and Maritime with all the information, details and data as a consequence of the Project Works that Roads and Maritime requires in providing assistance. RMS has provided assistance to NSC and SES for WC2U Stage 2 component as per B16. B12 Report submitted to NSC and SES as part of the consultative component for preparation finalisation of the report. RMS has provided assistance to council to prepare any new or necessary update to relevant plans and documents in	Closed

MCo A	Requirement	Status / Reference	Comment
		<p>relation to flooding to reflect changes in flooding levels, flows and characteristics as a result of the project. Email sent from RMS to DP&E detailing consultation on 31/7/2015. RMS commenced a review of the flood studies for Warrell Creek in the vicinity of Browns Crossing Road and the Upper Warrell Creek crossing. Should the review result in changes to the flood modelling report, the updated report will be provided to Council, at no cost to Council, for use in floodplain management planning.</p>	
B17	<p>The Proponent shall prepare and implement a Water Quality Monitoring Program to monitor the impacts of the project on SEPP 14 wetlands, surface water quality and groundwater resources during construction and operation. The Program shall be developed in consultation with EPA and DPI and shall include but not necessarily be limited to:</p> <ul style="list-style-type: none"> a identification of surface water and groundwater quality monitoring locations which are representative of the potential extent of impacts from the project; b identification of works and activities during construction and operation of the project, including emergencies and spill events, that have the potential to impact on surface water quality and risks to oyster farming in the Nambucca, Bellinger, and Kalang rivers; c representative background monitoring of surface water and groundwater quality parameters for a minimum of six (6) months (considering seasonality) prior to the commencement of construction to establish baseline water conditions; d development and presentation of indicators or standards against which any changes to surface water quality will be assessed, having regard to the Australian and New Zealand Guidelines for Fresh and Marine Water Quality 2000 (ANZECC, 2000); e contingency and ameliorative measures in the event that adverse impacts to surface water quality are identified; f a minimum monitoring period of three years following the completion of construction or until any disturbed waterways/ groundwater resources 	<p>Roads and Maritime have developed a Water Quality Monitoring Program in consultation with OEH and DPI to address the requirements of this condition. WQMP plan as approved by DP&E 23 May 2014. An updated Groundwater Monitoring Program to remove several bores from the program that have been dry throughout construction was approved on 29 September 2017</p> <p>The requirements of this condition are ongoing for all stages throughout construction and up to three years following completion of the project.</p>	<p>Open</p> <p>To be closed up to three years after completion of construction of the entire Project in mid to late 2018.</p>

MCo A	Requirement	Status / Reference	Comment
	<p>are certified by an independent expert as being rehabilitated to an acceptable condition. The monitoring shall also confirm the establishment of operational water control measures (such as sedimentation basins and vegetation swales); and</p> <p>g reporting of the monitoring results to the Department, EPA and DPI.</p> <p>The Program shall be submitted to the Director General for approval six (6) months prior to the commencement of construction of the project, or as otherwise agreed by the Director General. A copy of the Program shall be submitted to EPA and DPI prior to its implementation.</p>		
B18	<p>As part of detailed design, the Proponent shall ensure that the final design of the alignment is aligned to minimise project impacts on the Cow Creek Aboriginal Reserve (21-6-0228) as far as practicable and detail these design considerations in the Heritage Management Plan required to be prepared under condition B31(e).</p>	Not applicable to the WC2NH Project (Stage 2)	NA
B19	<p>Prior to the commencement of pre-construction and construction activities affecting the following Aboriginal sites the Proponent shall undertake the relevant salvage mitigation measures outlined in the Environmental Assessment for these sites:</p> <ul style="list-style-type: none"> a Butchers Creek 1 (previously PAD 1); b Stoney Creek 1 (previously PAD 24); c Bald Hill Road 1 (previously PAD 7); d Old Coast Road Stone Artefact (previously PAD 2); e Boggy Creek Artefact 1 & resource gathering area (previously PAD 16); f Cow Creek Artefact Scatter (previously PAD 8); g Kalang Spur Artefact Scatter (previously PAD 12); h Kalang Flat 1 9(a) (previously PAD 9); i Kalang Flat 2 9(b) (previously PAD 9); j South Arm Road 1; k Tyson's Flat Ridge Artefact Scatter (previously PAD 29); 	<p>Archaeological Salvage works have been undertaken by Roads and Maritime. Sites located within the Project Boundary have been cleared to commence construction in October 2014.</p> <p>RMS submitted salvage report to LALC's in August 2012. RMS submitted the results of the salvage report to DP&E (formally DOPI) on 1/8/2012</p>	Closed 1 August 2012

MCo A	Requirement	Status / Reference	Comment
	<p>l Tyson's Flat 1 (previously PAD 28); and</p> <p>m Tyson's Flat 2 (previously PAD 27).</p> <p>The results of the salvage program shall be provided to the Department, OEH and Aboriginal stakeholders within six months of the completion of the salvage program, unless otherwise agreed by the Director General.</p>		
B20	<p>Prior to the commencement of pre-construction and construction activities affecting the possible house site identified as Site 12 in Table 19-3 of the Environmental Assessment, the Proponent shall prepare an archaeological assessment in consultation with the OEH (Heritage Branch), and generally in accordance with the Departments Archaeological Assessments Guideline (1996), and submit the assessment for the Director General's approval.</p> <p>Any further archaeological work recommended on this site by the assessment shall be undertaken by the Proponent in consultation with the OEH (Heritage Branch) and reported to the Director General within six months of the completion of the work, unless otherwise agreed by the Director General.</p>	Not applicable to the WC2NH Project (Stage 2)	NA
B21	<p>Prior to the commencement of construction (unless otherwise agreed to by the Director General), the Proponent shall prepare and implement an Urban Design and Landscape Plan for the project. The plan shall be prepared in consultation with the relevant Council and shall present an integrated urban design for the project. The plan shall include, but not necessarily be limited to:</p> <ul style="list-style-type: none"> a a principle goal of achieving the urban design objectives outlined in Section 13.4 of Volume 1 of the Environmental Assessment; b sections and perspective sketches; c locations along the project corridor directly or indirectly impacted by the construction of the project (e.g. temporary ancillary facilities, access tracks, watercourse crossings, etc.) which are proposed to be actively rehabilitated, regenerated and/ or revegetated to promote biodiversity outcomes and visual integration. Details of species to be replanted/ revegetated shall be provided,, including their appropriateness to the area and considering existing vegetation and habitat for threatened species; 	<p>Roads and Maritime and its construction partner for Roads and Maritime and its construction partners have completed an Urban Design and Landscape Plan for each stage of the project in consultation with council, relevant stakeholders and the community.</p> <p>A letter seeking approval for a staged Plan and to submit the UDLP after the commencement of construction was provided to DP&E on the 25/11/14.</p> <p>A letter confirming staged submission of the Project UDLP was provided by DP&E on the 04/12/14.</p> <p>Stage 1 of the UDLP was provided to DP&E on the 01/06/15. Stage 1 of the UDLP included the Project design at the 15% detailed design phase. It included a methodology for bushland regeneration, riparian zone rehabilitation, preferred seed mixes and concepts for the design of built elements.</p>	<p>Open</p> <p>To be closed following completion of construction of the entire Project in mid to late 2018</p>

MCo A	Requirement	Status / Reference	Comment
	<p>d location of existing vegetation and proposed landscaping, including use of indigenous and endemic species where possible. The plan shall assess the visual screening effects of existing vegetation and the proposed landscaping at residences and businesses, which have been identified as likely to experience high visual impact as a result of the project. Where high residual impacts are identified to remain (including in relation to headlight intrusion), the plan shall in consultation with affected receptors, identify opportunities for providing at-receptor landscaping to further screen views of the project. Where agreed to with the landowner, these measures shall be implemented during the construction of the project;</p> <p>e strategies for progressive landscaping incorporating other environmental controls such as erosion and sedimentation controls, drainage, noise mitigation;</p> <p>f location and design treatments for built elements including retaining walls, cuttings, bridges, and noise barriers;</p> <p>g location and design treatments for any associated footpaths and cyclist elements, and other features such as seating, lighting (in accordance with AS 4282-1997 Control of the Obtrusive Effect of Outdoor Lighting), fencing, and signs;</p> <p>h evidence of consultation with the community on the proposed urban design and landscape measures prior to its finalisation; and</p> <p>i monitoring and maintenance procedures for the built elements and landscaping (including weed control) including responsibilities, timing and duration and contingencies where landscaping measures fail.</p> <p>j The Plan shall be submitted for the approval of the Director General prior to commencement of construction of the project. The Plan may be submitted in stages to suit the staged construction program of the project.</p>	<p>Comments were received from DP&E on the 26/06/15. The comments were addressed by AFJV as part of the 85% UDLP Review Process.</p> <p>UDLP Community Consultation was undertaken by RMS/AFJV on the 07/11/2015 at the Macksville Senior Citizens Centre</p> <p>Stage 2 of the UDLP was provided to DP&E on the 1/12/2016 and included details of the final design of built elements, evidence of community consultation and other outstanding information.</p> <p>Comments were received from DP&E on the 15/1/2016. The comments were addressed by AFJV and a response provided by RMS to DP&E on the 5/2/2016.</p> <p>Approval of the Stage 2 of the UDLP was provided by DP&E on 19/02/2016</p> <p>The UDLP has been updated to include the North Macksville Ramps into the design. The design has incorporated headlight screening measures as required by Modification 8. Advice was received from DP&E that construction on the North Macksville Ramps could commence prior to the submission of the updated UDLP. This was confirmed in an email from DP&E in May 2016. This update to the UDLP formed Stage 3 of the UDLP approval with DP&E</p> <p>The UDLP design in the vicinity of the North Macksville Ramps (Stage 3) was displayed for public exhibition and feedback between 16 – 30 October 2017. No Submissions were received during the exhibition period.</p> <p>An updated UPLP and associated drawing sheets were submitted to DP&E on 22 November 2017 and 6 December 2017 seeking the Secretary's consideration of the North Macksville Ramps. DP&E approved the updated UDPL Design report and</p>	

MCo A	Requirement	Status / Reference	Comment
		drawings on 20 December 2017.	
B22	The Proponent shall ensure that the project is designed in consultation with DPI (Forests NSW) to ensure that access of a standard that is at least equivalent to that currently existing and which meets relevant road safety standards is maintained within the State forests to enable continued forestry operations, fire management and recreation during construction and operation.	Roads and Maritime has reached agreement with Forestry Corporation in regards to this requirement, with proposal from Forestry Corporation on the work it will undertake in State Forests. No issues have been raised by Forestry NSW regarding access during the reporting period. Minor adjustments to the design have been made in consultation with RMS. The finalised Property Adjustments were accepted by Forestry NSW in October 2016. Further adjustments have been made to the design of the several Property Adjustments Drawings in discussions with Forestry NSW.	Open To be closed following completion of construction of the entire Project in mid to late 2018.
B23	The Proponent shall ensure that the project is designed to incorporate appropriate signage for townships along the project alignment, in consultation with the relevant Council and businesses in the towns. The signage policy shall be developed, consistent with the RTA's standard signposting policy, and provide information on the range of services available within the towns including advice that the route through the towns may be taken as an alternative route to the bypass.	Consultation is ongoing in accordance with requirements of this condition, and forms part of a wider consultation strategy for the whole Pacific Highway upgrade program. Community consultation for directional signage was undertaken from 19 July 2017 through to 14 August 2017. The Project received more than 60 items of feedback via feedback forms, telephone, email, and an on-line survey.	Open To be closed following opening of entire project in June 2018.
B24	The Proponent shall ensure that the project is designed to minimise land take impacts to surrounding properties (including agricultural properties) as far as feasible and reasonable, in consultation with the affected landowners. Where the viability of existing agricultural operations are identified to be highly affected by the land requirements of the project, the Proponent shall as part of detailed design employ a suitably qualified and experienced independent agricultural specialist (that is approved by the Director General for the purpose of this condition), to assist in the following (where agreed to by the relevant landowner): a identifying alternative farming opportunities for the relevant properties including purchase of other residual land to enable existing/new	The acquisition for the final property to the south of the Project was executed in February 2016. The design of the project has been optimised to minimise land take and best serve adjacent business and private land use practices. The viability of agricultural operations would not be substantially affected by the project.	Closed

MCo A	Requirement	Status / Reference	Comment
	<p>agricultural activities to continue; and/or</p> <p>b negotiating appropriate compensation and/or arrangements for the purchase of the property under the Land Acquisition (Just Terms Compensation) Act 1991.</p>		
B25	<p>The Proponent shall develop and implement a Compliance Tracking Program to track compliance with the requirements of this approval. The Program shall be submitted to the Director General for approval prior to the commencement of construction and relate to both the construction and operational phases of the project, and include, but not necessarily be limited to:</p> <p>a provisions for the notification of the Director General of the commencement of works prior to the commencement of construction and prior to the commencement of operation of the project (including prior to each stage, where works are being staged);</p> <p>b provisions for periodic review of project compliance with the requirements of this approval, Statement of Commitments and documents listed under condition A1;</p> <p>c provisions for periodic reporting of compliance status against the requirements of this approval, Statement of Commitments and documents listed under condition A1 to the Director General including at least one month prior to the commencement of construction and operation of the project and at other intervals during the construction and operation, as identified in the Program;</p> <p>d a program for independent environmental auditing in accordance with ISO 19011:2003 - Guidelines for Quality and/ or Environmental Management Systems Auditing;</p> <p>e mechanisms for reporting and recording incidents and actions taken in response to those incidents;</p> <p>f provisions for reporting environmental incidents to the Director General during construction and operation; and</p> <p>g procedures for rectifying any non-compliance identified during environmental auditing, review of compliance or incident management.</p>	<p>Roads and Maritime submitted Compliance Tracking Program to DP&E on 7 March 2013, which was subsequently approved by DP&E on 20 March 2013.</p> <p>The Compliance Tracking Program was updated and approved by DP&E on the 16/12/14.</p> <p>This report forms part of Roads and Maritime's notification to DP&E as to the anticipated opening of Stage 2b of the project.</p>	<p>Open</p> <p>To be closed within two months following completion of construction of the entire Project in mid to late 2018.</p>
B26	<p>Prior to the commencement of construction, the Proponent shall establish and maintain a new website, or dedicated pages within an existing website,</p>	<p>A project website has been established and is accessible through the Roads and Maritime corporate</p>	<p>Open</p>

MCo A	Requirement	Status / Reference	Comment
	<p>for the provision of electronic information associated with the project. The Proponent shall, subject to confidentiality, publish and maintain up-to-date information on the website or dedicated pages including, but not necessarily limited to:</p> <ul style="list-style-type: none"> a information on the current implementation status of the project; b a copy of the documents referred to under condition A1 of this approval, and any documentation supporting modifications to this approval that may be granted from time to time; c a copy of this approval and any future modification to this approval; d a copy of each relevant environmental approval, licence or permit required and obtained in relation to the project; e a copy of each current strategy, plan, program or other document required under this approval; and f the outcomes of compliance tracking in accordance with the requirements of Condition B25. 	<p>website. The website is updated at regular intervals and will contain all information, as a minimum, required by this condition</p>	<p>To be closed following the completion of all requirements of this approval</p>
B27	<p>Prior to the commencement of construction, the Proponent shall ensure that the following are available for community complaints and enquiries during the construction period:</p> <ul style="list-style-type: none"> a a telephone number on which complaints and enquiries about construction and operation activities may be registered; b a postal address to which written complaints and enquiries may be sent; and c an email address to which electronic complaints and enquiries may be transmitted. The telephone number, the postal address and the email address shall be published in a newspaper circulating in the local area prior to the commencement of construction and prior to the commencement of project operation. The above details shall also be provided on the website (or dedicated pages) required by this approval. <p>The Proponent must prepare and implement a Construction Complaints Management System consistent with <i>AS 4269 Complaints Handling</i> prior to the commencement of construction activities and must maintain the System for the duration of construction activities.</p> <p>Information on all complaints received, including the means by which they</p>	<p>Roads and Maritime and its construction partners developed a Community Communications Strategy for each stage of the project that among other things, address the requirements of this condition.</p> <p>An advertisement advising of the commencement of Early Works was undertaken on the 31/11/2015 and was presented in the Bellingen Shire Courier-Sun on 31/10/2015 advising the community of the anticipated commencement of the various stages of construction and also how to establish contact with Roads and Maritime and its construction partners via telephone, post and email. This information is also supplied with all community notifications and published on the project website.</p>	<p>Open</p> <p>To be closed following completion of construction of the entire Project in mid to late 2018.</p>

MCo A	Requirement	Status / Reference	Comment
	<p>were addressed and whether resolution was reached and whether mediation was required or used, must be maintained by the Proponent and included in a complaints register. The information contained within the System must be made available to the Director General on request.</p>		
B28	<p>The Proponent shall prepare and implement a Community Communication Strategy for the project. This Strategy shall be designed to provide mechanisms to facilitate communication between the Proponent, the Contractor, the Environmental Representative, the relevant Council and the local community (broader and local stakeholders) on the construction and environmental management of the project. The Strategy shall include, but not necessarily be limited to:</p> <ul style="list-style-type: none"> a identification of stakeholders to be consulted as part of the Strategy, including affected and adjoining landowners; b procedures and mechanisms for the regular distribution of information to stakeholders on the progress of the project and matters associated with environmental management; c procedures and mechanisms through which stakeholders can discuss or provide feedback to the Proponent and/or Environmental Representative in relation to the environmental management and delivery of the project; d procedures and mechanisms through which the Proponent can respond to any enquires or feedback from stakeholders in relation to the environmental management and delivery of the project; and e procedures and mechanisms that would be implemented to resolve any issues/disputes that may arise between parties on the matters relating to environmental management and the delivery of the project. This may include the use of an appropriately qualified and experienced independent mediator. <p>The Proponent shall maintain and implement the Strategy throughout construction of the project. The Strategy shall be approved by the Director General prior to the commencement of construction, or as otherwise agreed by the Director General.</p>	<p>Roads and Maritime and its construction partners developed a Community Communications Strategy for each stage of the project that among other things, address the requirements of this condition.</p> <p>The Community Involvement Plan was approved by DP&E on the 16/12/14. The Plan has been reviewed and revised. An updated version of the Plan was provided to DP&E in August 2017 with approval obtained from DP&E 29 September 2017</p>	<p>Open</p> <p>To be closed following completion of construction of the entire Project in mid to late 2018</p>
B29	<p>Prior to the commencement of construction of the project, or as otherwise</p>	<p>DP&E approved Mr David Bone – Onsite</p>	<p>Open</p>

MCo A	Requirement	Status / Reference	Comment
	<p>agreed by the Director General, the Proponent shall nominate for the approval of the Director General a suitably qualified and experienced Environment Representative(s) that is independent of the design (including preparation of documentation referred to condition A1), and construction personnel. The Proponent shall employ the Environmental Representative(s) for the duration of construction, or as otherwise agreed by the Director General. The Environment Representative(s) shall:</p> <ul style="list-style-type: none"> a be the principal point of advice in relation to the environmental performance of the project; b be consulted in responding to the community concerning the environmental performance of the project; c monitor the implementation of all environmental management plans and monitoring programs required under this approval; d monitor the outcome of all environmental management plans and advise the Proponent upon the achievement of all project environmental outcomes; e have responsibility for considering and advising the Proponent on matters specified in the conditions of this approval, and all other licences and approvals related to the environmental performance and impacts of the project; f ensure that environmental auditing is undertaken in accordance with the requirements of condition B25 and the project Environmental Management System(s); g be given the authority to approve/ reject minor amendments to the Construction Environment Management Plan. What constitutes a "minor" amendment shall be clearly explained in the Construction Environment Management Plan required under condition B30; and h be given the authority and independence to require reasonable steps be taken to avoid or minimise unintended or adverse environmental impacts, and failing the effectiveness of such steps, to direct that relevant actions be ceased immediately should an adverse impact on the environment be likely to occur. 	<p>Environmental Management as the Environmental Representative on 17 May 2013.</p>	<p>To be closed following completion of construction of the entire Project in mid to late 2018</p>
B30	<p>Prior to the commencement of construction, the Proponent shall prepare and (following approval) implement a Construction Environmental</p>	<p>A Construction Environmental Management Plan (CEMP), including relevant sub-plans, was prepared</p>	<p>Open To be closed following</p>

MCo A	Requirement	Status / Reference	Comment
	<p>Management Plan for the project. The Plan shall outline the environmental management practices and procedures that are to be followed during construction, and shall be prepared in consultation with the EPA, DPI and relevant Council and include, but not necessarily be limited to:</p> <ul style="list-style-type: none"> a a description of all relevant activities to be undertaken during construction of the project or stages of construction, as relevant; b statutory and other obligations that the Proponent is required to fulfil during construction including all approvals, consultations and agreements required from authorities and other stakeholders, and key legislation and policies. Evidence of consultation with relevant public authorities, shall be included identifying how issues raised by these public authorities have been addressed in the plan; c a description of the roles and responsibilities for all relevant employees involved in the construction of the project including relevant training and induction provisions for ensuring that all employees, including contractors and sub-contractors are aware of their environmental and compliance obligations under these conditions of approval; d identification of ancillary facility site locations, including an assessment against the location criteria outlined in condition C27; e an environmental risk analysis to identify the key environmental performance issues associated with the construction phase and details of how environmental performance would be monitored and managed to meet acceptable outcomes including what actions will be taken to address identified potential adverse environmental impacts (including any impacts arising from concurrent construction works with adjacent Pacific Highway Upgrade projects, as relevant). In particular, the following environmental performance issues shall be addressed in the Plan: <ul style="list-style-type: none"> i. measures to monitor and manage dust emissions including dust generated by haulage trucks, traffic on unsealed public roads and stockpile management; ii. measures to monitor and manage waste generated during construction including but not necessarily limited to: general procedures for waste classification, handling, reuse, and disposal; how contaminated materials would be handled and disposed; use of secondary waste material in construction wherever feasible and 	<p>for each stage of the project in consultation with EPA, DPI (Fishing and Aquaculture) and Nambucca Shire Council to address the relevant requirements of this condition. DP&E approved the WC2NH CEMP and Sub-plans on the 16/12/14.</p> <p>Further detail on the requirements of this condition as it relates to Stage 2 of the project is available in the most recent project construction compliance report (March 2018).</p>	<p>completion of construction of the entire Project in mid to late 2018</p>

MCo A	Requirement	Status / Reference	Comment
	<p>reasonable; procedures for dealing with green waste including timber and much from clearing activities; and measures for reducing demand on water resources (including the potential for reuse of treated water from sediment control basins);</p> <p>iii. measures to monitor and manage spoil and fill including details of how excavated material would be handled, stockpiled, reused and disposed and a stockpile management protocol detailing location criteria that would guide the placement of stockpiles and minimum management measures (including rehabilitation) that would be implemented to avoid/ minimise amenity impacts to surrounding residents and environmental risks (including to surrounding watercourses);</p> <p>iv. measures to monitor and manage hazard and risks including emergency management; and</p> <p>v. the issues identified in condition B31;</p> <p>f details of community involvement and complaints handling procedures during construction, consistent with the requirements of conditions B26 to B28;</p> <p>g details of compliance and incident management consistent with the requirements of condition B25; and</p> <p>h procedures for the periodic review and update of the Construction Environmental Management Plan as necessary (including where minor changes can be approved by the Environmental Representative).</p> <p>The Plan shall be submitted for the approval of the Director General no later than one month prior to the commencement of construction, or within such period otherwise agreed by the Director General. Construction works shall not commence until written approval has been received from the Director General.</p>		
B31	<p>As part of the Construction Environment Management Plan for the project required under condition B30 of this approval, the Proponent shall prepare and implement the following sub plan(s):</p> <p>a a Construction Traffic Management Plan, prepared in accordance with the RTA's <i>QA Specification G10 - Control of Traffic and Traffic Control at Work Sites Manual</i> (2003) to manage disruptions to highway</p>	<p>A Construction Traffic Management Plan (TMP) to address the requirements of this condition was prepared for each stage of the Project. DP&E approved the WC2NH CEMP and associated Sub-plans on the 16/12/14.</p> <p>Further detail on the requirements of this condition as</p>	<p>Open</p> <p>To be closed following completion of construction of the entire Project in mid to late 2018</p>

MCo A	Requirement	Status / Reference	Comment
	<p>and local traffic movements as a result of construction traffic associated with the project. The Plan shall be developed in consultation with Council and shall include, but not necessarily be limited to:</p> <ul style="list-style-type: none"> <i>i.</i> identification of construction traffic routes and quantification of construction traffic volumes (including heavy vehicle/spoil haulage) on these routes; <i>ii.</i> details of vehicle movements for construction sites and site compounds including parking, dedicated vehicle turning areas, and ingress and egress points; <i>iii.</i> potential impacts to traffic on the existing highway and associated local roads including intersection level of service and potential disruptions to arrangements for pedestrians, property access, public transport, parking and/ or cyclist; <i>iv.</i> details of temporary and interim traffic arrangements including intersections, property access and alternative traffic routes; <i>v.</i> traffic and other arrangements to minimise impacts including safe pedestrian access at all times, and the provision of alternative facilities and locations for pedestrians and/or cyclist access; <i>vi.</i> a response procedure for dealing with traffic incidents; and <i>vii.</i> mechanism for the monitoring, review and amendment of this plan; 	<p>it relates to Stage 2 of the project is available in the most recent project construction compliance report (March 2018).</p>	
	<p>b a Construction Flora and Fauna Management Plan to detail how construction impacts on ecology will be minimised and managed. The Plan shall be developed in consultation with the EPA and shall include, but not necessarily be limited to:</p> <ul style="list-style-type: none"> <i>i.</i> details of pre-construction surveys undertaken to verify the construction boundaries/ footprint of the project based on detailed design and to confirm the vegetation to be cleared as part of the project (including tree hollows, threatened flora and fauna species, mangroves and riparian vegetation). The surveys shall be undertaken by a qualified ecologist and include surveys of existing bridges and culverts for the presence of micro-bat roosting at least 6 months prior to the planned disturbance of such structures and targeted surveys for the Giant Barred Frog within and in the vicinity of the project corridor undertaken during suitable 	<p>A Construction Flora and Fauna Management Plan (FFMP) to address the requirements of this condition was prepared in consultation with EPA for each stage of the Project. DP&E approved the FFMP on the 16/12/14.</p> <p>Further detail on the requirements of this condition as it relates to Stage 2 of the project is available in the most recent project construction compliance report (March 2018).</p>	<p>Open</p> <p>Further detail on the requirements of this condition as it relates to Stage 2b of the project is available in the most recent project construction compliance report (March 2018).</p> <p>To be closed following completion of construction of the entire Project in mid to late 2018</p>

MCo A	Requirement	Status / Reference	Comment
	<p>conditions;</p> <p><i>ii.</i> updated sensitive area vegetation maps based on B31(b)(i) above and previous survey work;</p> <p><i>iii.</i> a Giant Barred Frog management plan, in the case that this species or its habitat is identified to occur in the project corridor or its vicinity, based on surveys undertaken as part of B31(b)(i);</p> <p><i>iv.</i> a micro-bat management strategy, in the case that micro bats or evidence of roosting are identified during pre-construction surveys. The strategy shall detail measures to avoid, minimise and mitigate impacts to these species and identified roost sites, including short and long term management measures;</p> <p><i>v.</i> details of general work practices to minimise the potential for damage to native vegetation (particularly EECs) not proposed to be cleared as part of the project and native fauna during construction, including (but not necessary limited to): fencing of sensitive areas, a protocol for the removal and relocation of fauna during clearing, presence of an experienced ecologist to oversee clearing activities and facilitate fauna rescues and re-location, clearing timing with consideration to breeding periods, measures for maintaining existing habitat features (such as bush rock and tree branches etc), seed harvesting and appropriate topsoil management, construction worker education, weed management, erosion and sediment control and progressive re-vegetation;</p> <p><i>vi.</i> specific procedures to deal with EEC/ threatened species anticipated to be encountered within the project corridor including re-location, translocation and/or management and protection measures;</p> <p><i>vii.</i> a procedure for dealing with unexpected EEC/ threatened species identified during construction including stopping works and notification of EPA, determination of appropriate mitigation measures in consultation with EPA (including relevant relocation measures) and update of ecological monitoring and/ or biodiversity offset requirements consistent with conditions B8 and B10; and</p> <p><i>viii.</i> mechanism for the monitoring, review and amendment of this plan;</p>		

MCo A	Requirement	Status / Reference	Comment
C	<p>a Construction Noise and Vibration Management Plan to detail how construction noise and vibration impacts will be minimised and managed. The Plan shall be developed in consultation with the EPA and include, but not necessarily be limited to:</p> <ul style="list-style-type: none"> i. identification of nearest sensitive receptors and relevant construction noise and vibration goals applicable; ii. identification of key noise and/or vibration generating construction activities (based on representative construction scenarios) that have the potential to impact on surrounding sensitive receivers including expected noise/ vibration levels; iii. identification of all feasible and reasonable measures proposed to be implemented to minimise construction noise and vibration impacts (including construction traffic noise impacts); iv. procedure for dealing with out-of-hour works in accordance with condition C4, including procedures for notifying the Director General concerning complaints received in relation to the extended hours approved under condition C4(d); v. procedures and mitigation measures to ensure relevant vibration and blasting criteria are achieved, including a suitable blast program supported by test blast results, applicable buffer distances for vibration intensive works, use of low vibration generating equipment vibration dampeners or alternative construction methodology, and pre- and post- construction dilapidation surveys of sensitive structures where blasting and/ or vibration is likely to result in building damage; vi. procedures for notifying sensitive receivers of construction activities that are likely to affect their noise and vibration amenity, as well as procedures for dealing with and responding to noise complaints; and vii. a program for construction noise and vibration monitoring clearly indicating monitoring frequency, location, how the results of this monitoring would be recorded and, procedures to be followed where significant exceedances of relevant noise and vibration goals are detected; 	<p>A Construction Noise and Vibration Management Plan. (NVMP) to address the requirements of this condition was prepared in consultation with EPA for each stage of the Project. DP&E approved the NVMP on the 16/12/14.</p> <p>Further detail on the requirements of this condition as it relates to Stage 2 of the project is available in the most recent project construction compliance report (March 2018).</p>	<p>Open</p> <p>To be closed following completion of construction of the entire Project in mid to late 2018</p>

MCo A	Requirement	Status / Reference	Comment
	<p>d a Construction Water Quality Management Plan to manage surface water quality and groundwater impacts during construction of the project. The Plan shall be developed in consultation with EPA, DPI (Fisheries and NOW) and include, but not necessarily be limited to:</p> <ul style="list-style-type: none"> i. a contingency plan, consistent with the <i>Acid Sulfate Soils Manual</i>, to deal with the unexpected discovery of actual or potential acid sulfate soils; ii. a tannin leachate management protocol to manage the stockpiling of mulch and use of cleared vegetation and mulch filters for erosion and sediment control; iii. details of how construction activities would be managed and mitigated to minimise erosion and sedimentation consistent with condition C17; iv. where construction activities have the potential to impact on waterways or wetlands (through direct disturbance such as construction of waterway crossings or works in close proximity to waterways or wetlands), site specific mitigation measures to be implemented to minimise water quality, riparian and stream hydrology impacts as far as practicable, including measures to stabilise bank structure and rehabilitate affected riparian vegetation to existing or better condition (including relevant performance indicators and monitoring requirements). The timing of rehabilitation of the waterways shall be as agreed to with DPI (Fisheries and NOW) shall be identified in the plan; v. construction water quality monitoring requirements consistent with condition B17; and vi. a groundwater management strategy, including (but not necessarily limited to): <ul style="list-style-type: none"> i. description and identification of groundwater resources (including depths of the water table and groundwater quality) potentially affected by the proposal based on baseline groundwater monitoring undertaken in accordance with condition B17(c); ii. identification of surrounding licensed bores, dams or other water supplies and groundwater dependant ecosystems and potential 	<p>A Construction Water Quality Management Plan (SWMP) to address the requirements of this condition was prepared in consultation with OEH, DPI (Fishing and Aquaculture) and NOW for each stage of the Project. DP&E approved the SWMP on the 16/12/14.</p> <p>The Groundwater Monitoring Program was updated and provided to DP&E for approval. Approval was obtained by DP&E on 7 September 2017.</p> <p>Further detail on the requirements of this condition as it relates to Stage 2 of the project is available in the most recent project construction compliance report (March 2018).</p>	<p>Open</p> <p>To be closed following completion of construction of the entire Project in mid to late 2018</p>

MCo A	Requirement	Status / Reference	Comment
	<p>groundwater risks associated with the construction of the project on these groundwater users and ecosystems;</p> <p>iii. measures to manage identified impacts on water table, flow regimes and quality and to groundwater users and ecosystems;</p> <p>iv. groundwater inflow control, handling, treatment and disposal methods; and</p> <p>v. a detailed monitoring plan to identify monitoring methods, locations, frequency, duration and analysis requirements; and</p>		
	<p>e a Construction Heritage Management Plan to detail how construction impacts on Aboriginal and non-Aboriginal heritage will be minimised and managed. The Plan shall be developed in consultation with the OEH (Heritage Branch) (for non-Aboriginal heritage) and EPA and Registered Aboriginal Stakeholders (for Aboriginal heritage), and include, but not necessarily be limited to:</p> <p>ii. In relation to Aboriginal Heritage:</p> <p>i. details of management measures to be carried out in relation to already recorded sites and potential Aboriginal deposits (including further archaeological investigations, salvage measures and/ or measures to protect unaffected sites during construction works in the vicinity);</p> <p>ii. procedures for dealing with previously unidentified Aboriginal objects excluding human remains (including halting of works in the vicinity, assessment of the significance of the item(s) and determination of appropriate mitigation measures including when works can re-commence by a qualified archaeologist in consultation with registered Aboriginal stakeholders, assessment of the consistency of any new Aboriginal heritage impacts against the approved impacts of the project, and registering of the new site in the OEH AHIMS register);</p> <p>iii. procedures for dealing with human remains (including halting of works in the vicinity and notification of the NSW Police, OEH and registered Aboriginal stakeholders and not-recommending any works in the area unless authorised by OEH and/ or the NSW Police); and</p>	<p>A Construction Heritage Management Plan (HMP) to address the requirements of this condition was prepared in consultation with OEH and registered Aboriginal Stakeholders, where relevant, for each stage of the project. DP&E approved the WC2NH Heritage Management Plan (HMP) on the 16/12/14.</p> <p>Further detail on the requirements of this condition as it relates to Stage 2 of the project is available in the most recent project construction compliance report (March 2018).</p>	<p>Open</p> <p>To be closed following opening of entire project in early 2018</p>

MCoA	Requirement	Status / Reference	Comment
	<p>iv. Aboriginal cultural heritage induction processes for construction personnel (including procedures for keeping records of inductions undertaken for the duration of the project) and procedures for ongoing Aboriginal consultation and involvement; and</p> <p>(iii) In relation to non-Aboriginal Heritage:</p> <p>i. details of management measures to be carried out in relation to already recorded sites (including further heritage investigations, archival recordings and/ or measures to protect unaffected sites during construction works in the vicinity), consistent with the measures listed in Environmental Assessment Table 19-4;</p> <p>ii. procedures for dealing with previously unidentified non-Aboriginal objects, (including halting of works in the vicinity, assessment of the significance of the item(s) and determination of appropriate mitigation measures including when works can recommence by a qualified archaeologist and assessment of the consistency of any new non-Aboriginal heritage impacts against the approved impacts of the project; and</p> <p>iii. non-Aboriginal cultural heritage induction processes for construction personnel.</p>		
DURING CONSTRUCTION			
C1	The Proponent shall employ all feasible and reasonable measures to minimise the clearing of native vegetation to the greatest extent practicable during the construction of the project.	The requirements of this condition were incorporated into the CEMPs and associated FFMP for each stage of the project. See discussion provided for MCoA B30 and MCoA B31(b).	Open To be closed following completion of construction of the entire Project in mid to late 2018
C2	The Proponent shall employ all feasible and reasonable measures (including temporary cessation of relevant works, as appropriate) to ensure that the project is constructed in a manner that minimises dust emissions from the site, including wind-blown, traffic-generated dust, stockpiles and material tracking from construction sites onto public roads.	The requirements of this condition were incorporated into a Construction Air Quality Management Sub-plan (AQMP) prepared as part of the CEMP for each stage of the project. See discussion provided for MCoA B30.	Open To be closed following completion of construction of the entire Project in mid to late 2018

MCo A	Requirement	Status / Reference	Comment
C3	<p>The Proponent shall only undertake construction activities associated with the project during the following standard construction hours:</p> <ul style="list-style-type: none"> a 7:00am to 6:00pm Mondays to Fridays, inclusive; and b 8:00am to 1:00pm Saturdays; and c at no time on Sundays or public holidays. 	<p>The requirements of this condition were incorporated into the NVMP for each stage of the project. See discussion provided for MCoA B31(c).</p>	<p>Open</p> <p>To be closed following completion of construction of the entire Project in mid to late 2018</p>
C4	<p>Works outside of the construction hours identified in conditions C3 may be undertaken in the following circumstances:</p> <ul style="list-style-type: none"> a works that generate noise that is not audible at any sensitive receptor; b for delivery of materials required outside these hours by the Police or other authorities for safety reasons; or c where it is required in an emergency to avoid the loss of lives, property and/or to prevent environmental harm; or d construction works undertaken through sparsely populated areas in which sensitive receptors are located greater than 300 metres away from the project boundary. In this case construction is permissible during the following hours: 6.00am to 6.00pm Monday to Friday and 7.00am to 4.00pm Saturdays and at no time on Sundays or public holidays. These works hours may be reviewed and/ or revoked by the Director General in consultation with the EPA in the case of excessive or unresolved noise complaints; or e where an EPL applies to the construction of the project, construction hours which are approved in accordance with the conditions of an EPL for the project; or f where an EPL does not apply to the construction of the project, Out of Hours Works as agreed to by the Director general in accordance with condition C5. 	<p>The requirements of this condition were incorporated into the NVMP for each stage of the project. See discussion provided for MCoA B31(c).</p>	<p>Open</p> <p>To be closed following completion of construction of the entire Project in mid to late 2018</p>
C5	<p>For the purposes of condition C4 (f), certain construction activities (Out of Hours Works) may be allowed to occur outside the construction hours specified in conditions C3 with the prior written approval of the Director General. Requests for out of hours approval will be considered for construction activities which cannot be undertaken during the construction hours specified in conditions C3 for technical or other justifiable reasons</p>	<p>The requirements of this condition were incorporated into the NVMP for each stage of the project. See discussion provided for MCoA B31(c).</p>	<p>Open</p> <p>To be closed following completion of construction of the entire Project in mid to late 2018</p>

MCo A	Requirement	Status / Reference	Comment
	<p>and will be considered on a case by case or activity-specific basis. Any request for Out of Hours Works must be accompanied by:</p> <ul style="list-style-type: none"> a details of the nature and need for activities to be conducted during the varied construction hours; b written evidence to the EPA and the Director General that activities undertaken during the varied construction hours are justified, appropriate consultation with potentially affected receivers and notification of Council has been undertaken, issues raised have been addressed, and all feasible and reasonable mitigation measures have been put in place; and c evidence of consultation with the EPA on the proposed variation in standard construction hours. Despite the above, Out of Hours Works may also occur in accordance with an approved Construction Environment Management Plan or Construction Noise and Vibration Management Plan for this project, where that plan provides a process for considering the above on a case by case or activity specific basis by the Proponent, including factors a) to c) above. 		
C6	<p>Blasting associated with the project shall only be undertaken during the following hours</p> <ul style="list-style-type: none"> a 9:00 am to 5:00 pm, Mondays to Fridays, inclusive; b 9:00 am to 1:00 pm on Saturdays; and c at no time on Sundays or public holidays. <p>This condition does not apply in the event of a direction from police or other relevant authority for safety or emergency reasons to avoid loss of life, property loss and/or to prevent environmental harm.</p>	<p>The requirements of this condition were incorporated into the NVMP for each stage of the project. See discussion provided for MCoA B31(c).</p> <p>Blasting activities have commenced on the Project in July 2015 and were completed by the 31st August 2016. All blasts are undertaken in accordance with the hours specified in this condition.</p>	Closed 31 August 2016
C7	<p>The Proponent shall implement all feasible and reasonable noise mitigation measures with the aim of achieving the construction noise management levels detailed in the <i>Interim Construction Noise Guideline</i> (DECC, 2009) during construction activities, Any activities that could exceed the construction noise management levels shall be identified and managed in accordance with the Construction Noise and Vibration Management Plan required under condition B31(c) of this approval.</p>	<p>The requirements of this condition were incorporated into the NVMP for each stage of the project. See discussion provided for MCoA B31(c).</p>	<p>Open</p> <p>To be closed following completion of construction of the entire Project in mid to late 2018</p>

MCoA	Requirement	Status / Reference	Comment						
C8	<p>The Proponent shall implement all feasible and reasonable mitigation measures with the aim of achieving the following construction vibration goals and ground-borne noise levels:</p> <ul style="list-style-type: none"> a for structural damage vibration, the vibration limits set out in the German Standard D/N 4150 Part 3-1999 Structural Vibration in Buildings - Effects on Structures; b for works in the vicinity of the heritage structures, the vibration limits set out in the German Standard DIN 4150-3: 1999 Structural Vibration - part 3: Effects of vibration on structures; and c for human exposure, the acceptable vibration values set out in the Environmental Noise Management Assessing Vibration: A Technical Guideline (DEC 2006); and d the ground-borne noise levels set out in the Interim Construction Noise Guidelines (DECC, 2009). 	<p>The requirements of this condition were incorporated into the NVMP for each stage of the project. See discussion provided for MCoA B31(c).</p>	<p>Open</p> <p>To be closed following completion of construction of the entire Project in mid to late 2018</p>						
C9	<p>The Proponent shall ensure that air blast overpressure generated by blasting associated with the project does not exceed the criteria specified in Table 1 when measured at the most affected residence or other sensitive receiver. To ensure that criteria are satisfied at the most affected residence or other sensitive receiver, blasting trials shall be undertaken prior to the commencement of the project blasting program, with results from the trials used to determine site specific blast design to satisfy the criteria specified in Table 1.</p> <p>Table 1 Airblast overpressure criteria</p> <table border="1" data-bbox="280 1054 889 1315"> <thead> <tr> <th data-bbox="280 1054 548 1141">Airblast overpressure (dB(Lin Peak))</th> <th data-bbox="548 1054 889 1141">Allowable exceedance</th> </tr> </thead> <tbody> <tr> <td data-bbox="280 1141 548 1243">115</td> <td data-bbox="548 1141 889 1243">5% of total number of blasts over a 12 month period</td> </tr> <tr> <td data-bbox="280 1243 548 1315">120</td> <td data-bbox="548 1243 889 1315">0%</td> </tr> </tbody> </table>	Airblast overpressure (dB(Lin Peak))	Allowable exceedance	115	5% of total number of blasts over a 12 month period	120	0%	<p>The requirements of this condition were incorporated into the NVMP for each stage of the project. See discussion provided for MCoA B31(c).</p> <p>Blasting activities have commenced on the Project in July 2015 and were completed by the 31st August 2016. All blasts are undertaken in accordance with the hours specified in this condition.</p>	<p>Closed 31 August 2016</p>
Airblast overpressure (dB(Lin Peak))	Allowable exceedance								
115	5% of total number of blasts over a 12 month period								
120	0%								

MCo A	Requirement	Status / Reference	Comment						
C10	<p>The Proponent shall ensure that ground vibration generated by blasting associated with the project does not exceed the criteria specified in Table 2 when measured at the most affected residence or other sensitive receiver. To ensure that criteria are satisfied at the most affected residence or other sensitive receiver, blasting trials shall be undertaken prior to the commencement of the project blasting program, with results from the trials used to determine site specific blast design to satisfy the criteria specified in Table 2.</p> <p>Table 2 Peak particle velocity criteria</p> <table border="1" data-bbox="280 582 887 820"> <thead> <tr> <th>Peak particle velocity (mms-1)</th> <th>Allowable exceedance</th> </tr> </thead> <tbody> <tr> <td>5</td> <td>5% of total number of blasts over a 12 month period</td> </tr> <tr> <td>10</td> <td>0%</td> </tr> </tbody> </table>	Peak particle velocity (mms-1)	Allowable exceedance	5	5% of total number of blasts over a 12 month period	10	0%	<p>The requirements of this condition were incorporated into the NVMP for each stage of the project. See discussion provided for MCoA B31(c).</p> <p>Blasting activities have commenced on the Project in July 2015 and were completed by the 31st August 2016. All blasts are undertaken in accordance with the hours specified in this condition.</p>	Closed 31 August 2016
Peak particle velocity (mms-1)	Allowable exceedance								
5	5% of total number of blasts over a 12 month period								
10	0%								
C11	<p>The blasting criteria identified in condition C9 and/ or C10 do not apply where the Proponent has a written agreement with the relevant landowner to exceed the criteria identified in condition C9 and/ or C10 and the Director General has approved the terms of the written agreement. In obtaining the Director General approval for any such agreement, the Proponent shall submit to the Director General:</p> <ul style="list-style-type: none"> a details of the proposed blasting program and justification for the proposed increase to blasting criteria including alternatives considered (where relevant); b an assessment of the environmental impacts of the increased blast limits on the surrounding environment and most affected residences or other sensitive receivers including, but not limited to noise, vibration and air quality and any risk to surrounding utilities, services or other structures; c details of the blast management, mitigation and monitoring procedures to be implemented; and 	<p>The requirements of this condition were incorporated into the NVMP for each stage of the project. See discussion provided for MCoA B31(c).</p> <p>Blasting activities have commenced on the Project in July 2015 and were completed by the 31st August 2016. All blasts are undertaken in accordance with the hours specified in this condition.</p>	Closed 31 August 2016						

MCo A	Requirement	Status / Reference	Comment
	<p>d details of consultation undertaken and agreement reached with the relevant landowners (including a copy of the agreement in relation to increased blasting limits).</p> <p>The following exclusions apply to the application of this condition:</p> <p>a any agreements reached may be terminated by the landowner at any time should concerns about the increased blasting limits be unresolved;</p> <p>b the blasting limit agreed to under any agreement can at no time exceed a maximum Peak Particle Velocity vibration level of 25 mm/s or maximum Airblast Overpressure level of 125 dBL; and</p> <p>c the provisions under condition C11 (to increase applicable blast criteria in agreement with the relevant landowners) do not apply where the property is a heritage property.</p>		
C12	<p>Unless otherwise agreed to by the Director General, within six months of commencing construction, the Proponent shall in consultation with EPA prepare and submit for the approval of the Director General, a review of the operational noise mitigation measures proposed to be implemented for the project. The review shall:</p> <p>a confirm the operational noise predictions of the project based on detailed design. This operational noise assessment shall be based on an appropriately calibrated noise model (which has incorporated additional noise monitoring, where necessary for calibration purposes). The assessment shall specifically include verification of noise levels at Nambucca Heads Rest Area, based on additional noise monitoring undertaken at this location;</p> <p>b review the suitability of the operational noise mitigation measures identified in the documents listed under condition A1 to achieve the criteria outlined in the Environmental Criteria for Road Traffic Noise (EPA, 1999) and the Industrial Noise Policy (EPA, 2000) in relation to the Nambucca Heads Rest Area, based on the operational noise performance of the project predicted under (a) above; and</p> <p>c where necessary, investigate additional feasible and reasonable noise mitigation measures to achieve the criteria outlined in the Environmental Criteria for Road Traffic Noise (EPA, 1999) and the</p>	<p>RMS submitted a letter requesting an extension of time from DP&E for submission of the Operational Noise Mitigation Review (5/8/2015). DP&E approved the extension of time on 14/8/2015 for 9 months. A further extension of time was granted by the DP&E on the 20/05/16 allowing the report to be submitted for approval on the 8 May 2017. An update on the progress of the report was provided to DP&E on the 8 February 2017.</p> <p>Additional background noise monitoring and traffic counts were undertaken during the reporting period to supplement the information provided in the document.</p> <p>A revised document including changes requested by RMS was submitted to RMS in February 2017. The document was further revised in August 2017 after additional comments were received from RMS and the ER.</p> <p>A draft report and a further extension of time request to 8 October 2017 were submitted to DP&E on 2 May 2017. The final Operational Noise Mitigation Review was submitted to EPA and DP&E on 14 September</p>	Closed

MCo A	Requirement	Status / Reference	Comment
	Industrial Noise Policy (EPA, 2000) in relation to the Nambucca Heads Rest Area including the applicability of noise walls in the vicinity of River Road in Macksville.	2017. Comments received were addressed by AFJV in September 2017 with the updated report provided to RMS on 26 October 2017. RMS provided the updated report for approval to DP&E and the EPA on 1 November 2017 which was approved by DP&E on the 29th November 2017.	
C13	This approval does not allow the Proponent to destroy, modify or otherwise physically affect human remains.	Noted	Open To be closed following completion of construction of the entire Project in mid to late 2018
C14	The Proponent shall not destroy, modify or otherwise physically affect the Aboriginal cultural sites identified in Table 15-3 of the Environmental Assessment (including AHIMS site numbers 21-6-36, 21-6-0287, 21-6-0016, 21-6-0163, 21-6-0039, 21-6-0090, 21-6-0102, 21-6-0141, 21-6-0164, 21-6-0064, and 21-6-0044), Boggy Creek spiritual area, Buchanan Conflict Site at Cow Creek (21-6-00286), burial site, Cabbage tree palm resource site , Aboriginal mirrah (21-3-0034), Rosewood Scarred Tree or potential archaeological deposits (PAD) 31.	Noted	Open To be closed following completion of construction of the entire Project in mid to late 2018
C15	The Proponent shall not destroy, modify or otherwise physically affect the following historic sites: the ferry/punt crossing at Boulton Hill; old municipal tip; Valla Gold Mine; former stock route; tramway and quarry, Martells Road; and the native swamp conservation area.	Noted	Open To be closed following completion of construction of the entire Project in mid to late 2018
C16	The measures to protect any Aboriginal or historic heritage sites near or adjacent to the project during construction shall be detailed in the Heritage Management Plan required under condition B31 (e).	The requirement of this condition has been incorporated into management and mitigation measures and procedures within the approved Heritage Management Plan. Sites are protected using no-go zone fencing and signage which is regularly inspected and maintained.	Closed
C16A	a i) Where permanent works (including utilities, services and permanent access and service roads, or similar works required for the project)	The approved methodology – “Methodology for	Open

MCo A	Requirement	Status / Reference	Comment
	<p>located outside the approved project footprint and described in the documents listed in condition A1 are required, and those works have the potential to impact upon previously unidentified non-Aboriginal and Aboriginal archaeology, the proponent shall undertake archaeological investigations to determine the impacts of those works.</p> <p>ii) The proponent shall undertake the investigations required in accordance with condition C16A (a)(i) consistent with the Construction Heritage Management Plan required under Condition B31 (e), or using a methodology prepared in consultation with OEH and approved by the Director General.</p> <p>iii) The proponent shall report on the results of the archaeological investigations prior to commencement of permanent works, and:</p> <ul style="list-style-type: none"> · where the potential heritage impacts identified in the report are less than those described in the documents listed in condition A1, the report shall be provided to the Director General; · where the potential heritage impacts identified in the report are the same as those described in the documents listed in condition A1, the report shall be prepared in consultation with OEH and submitted to the Director General; · where the potential heritage impacts identified in the report are greater than those described in the documents listed in condition A1, the report shall be prepared in consultation with OEH and submitted to the satisfaction of the Director General. <p>iv) The report on the results of the archaeological investigation is to include recommendations (such as for further archaeological work) and shall include, but not necessarily be limited to, consideration of measures to avoid or minimise disturbance to Aboriginal objects where objects of moderate to high significance are found to be present.</p> <p>b i) The proponent shall undertake salvage work with the approval of the Director General, when recommended by the results of the archaeological investigation required under condition C16A.</p> <p>ii) In determining whether to approve salvage work, the Director General is to have reference to the results of all relevant archaeological investigations undertaken under condition C16A(a) and</p>	<p>Aboriginal and Historical Heritage Investigation for Works Outside the Project Corridor”, is incorporated as Appendix A to the approved Heritage Management Plan for implementation by AFJV. Accordingly, archaeological reports have been provided to DP&E in accordance with this condition.</p> <p>Heritage assessments have been undertaken for Public Utility realignment works, private property adjustments and design refinements outside of the previous approved Project Boundary. The approved Methodology has been followed under the guidance of the Project Archaeologist Jacobs and the Registered Aboriginal Parties. In all circumstances, a report has been prepared and approved by RMS and the ER. No impacts to heritage items have been identified from additional permanent work activities.</p> <p>The Cultural Heritage Assessment Reports for the Project permanent works were submitted to DP&E in December 2015.Open</p>	<p>To be closed following completion of construction of the entire Project in mid to late 2018</p>

MCoA	Requirement	Status / Reference	Comment
	the views of OEH.		
C17	Soil and water management measures consistent with <i>Managing Urban Stormwater - Soils and Construction Vols 1 and 2, 4th Edition</i> (Landcom, 2004) and <i>Managing Urban Stormwater Soils And Construction Vols 2A and 2D Main Road Construction</i> (DECC 2008) shall be employed during the construction of the project for erosion and sediment control.	<p>The requirements of this condition were incorporated into the SWMPs for each stage of the project. See discussion provided for MCoA B31(d).</p> <p>Further detail on the requirements of this condition as it relates to Stage 2 of the project is available in the most recent project construction compliance report (March 2018).</p>	<p>Open</p> <p>To be closed following completion of construction of the entire Project in mid to late 2018</p>
C18	Where available, and of appropriate chemical and biological quality, the Proponent shall use stormwater, recycled water or other water sources in preference to potable water for construction activities, including concrete mixing and dust control.	<p>The requirements of this condition were incorporated into the SWMPs for each stage of the project. See discussion provided for MCoA B31(d).</p> <p>Further detail on the requirements of this condition as it relates to Stage 2 of the project is available in the most recent project construction compliance report (March 2018).</p>	<p>Open</p> <p>To be closed following completion of construction of the entire Project in mid to late 2018</p>
C19	The Proponent shall construct the project in a manner that minimises impacts to private properties and other public or private structures (such as dams, fences, utilities, services etc.) along the project corridor. In the event that construction of the project results in direct or indirect damage to any such property or structure, the Proponent shall arrange and fund repair of the damage to a standard comparable to the in existence prior to the damage.	<p>Noted.</p> <p>Compliance with the requirements of this condition continues across Stage 2 of the project.</p> <p>Further detail on the requirements of this condition as it relates to Stage 2 of the project is available in the most recent project construction compliance report (March 2018).</p>	<p>Open</p> <p>To be closed following completion of construction of the entire Project in mid to late 2018</p>
C20	The Proponent shall ensure that access to all properties is maintained during construction unless agreed with the property owner in advance and that any access physically affected by the Project is reinstated to at least an	The requirements of this condition were incorporated into the TMPs for each stage of the project. See	<p>Open</p> <p>To be closed following</p>

MCoA	Requirement	Status / Reference	Comment
A	equivalent standard, in consultation with the landowner.	discussion provided for MCoA B31(a). Further detail on the requirements of this condition as it relates to Stage 2 of the project is available in the most recent project construction compliance report (March 2018).	completion of construction of the entire Project in mid to late 2018
C21	The Proponent shall in consultation with relevant landowners construct the project in a manner that minimises intrusion and disruption to agricultural operations/activities in surrounding properties (e.g. stock access, access to farm dams etc.).	Noted. Compliance with the requirements of this condition continues across Stage 2 of the project. Further detail on the requirements of this condition as it relates to Stage 2 of the project is available in the most recent project construction compliance report (March 2018).	Open To be closed following completion of construction of the entire Project in mid to late 2018
C22	Where the project traverses Nambucca, Newry and Little Newry State Forests, the Proponent shall in consultation with DPI (Forestry) ensure that construction activities do not unduly disrupt existing forestry activities, access for firefighting and recreation activities during construction.	Noted. Compliance with the requirements of this condition continues across Stage 2 of the project. Further detail on the requirements of this condition as it relates to Stage 2 of the project is available in the most recent project construction compliance report (March 2018).	Open To be closed following completion of construction of the entire Project in mid to late 2018
C23	Road dilapidation reports shall be prepared for all local roads likely to be used by construction traffic prior to use by construction heavy vehicles. A copy of the relevant report shall be provided to the relevant Council. Any damage resulting from the construction of the project, aside from that	The requirements of this condition were incorporated into the TMPs for each stage of the project. See discussion provided for MCoA B31(a). Further detail on the requirements of this condition as	Open To be closed following completion of construction of the entire Project in mid to

MCo A	Requirement	Status / Reference	Comment
	resulting from normal wear and tear, shall be repaired at the cost of the Proponent. The roads likely to be used by heavy construction vehicles should be identified in the Traffic Management Plan required under condition B31 (a).	it relates to Stage 2 of the project is available in the most recent project construction compliance report (March 2018).	late 2018
C24	The Proponent shall not cause, permit or allow any waste generated outside the site to be received at the site for storage, treatment, processing, reprocessing, or disposal on the site, except as expressly permitted by a licence under the <i>Protection of the Environment Operations Act 1997</i> , if such a licence is required in relation to that waste.	The requirements of this condition were incorporated into the Construction Waste and Energy Management Sub-plan for each stage of the project. See discussion provided for MCoA B30. Further detail on the requirements of this condition as it relates to Stage 2 of the project is available in the most recent project construction compliance report (March 2018).	Open To be closed following completion of construction of the entire Project in mid to late 20188
C25	The Proponent shall maximise the reuse and/or recycling of waste materials generated on site as far as practicable, to minimise the need for treatment or disposal of those materials off site.	The requirements of this condition were incorporated into the Construction Waste and Energy Management Sub-plan for each stage of the project. See discussion provided for MCoA B30. Further detail on the requirements of this condition as it relates to Stage 2 of the project is available in the most recent project construction compliance report (March 2018).	Open To be closed following completion of construction of the entire Project in mid to late 2018
C26	The Proponent shall ensure that all liquid and/or non-liquid waste generated on the site is assessed and classified in accordance with <i>Waste Classification Guidelines</i> (DECC, 2008), or any future guideline that may supersede that document and where removed from the site is only directed to a waste management facility lawfully permitted to accept the materials.	The requirements of this condition were incorporated into the Construction Waste and Energy Management Sub-plan for each stage of the project. See discussion provided for MCoA B30. Further detail on the requirements of this condition as it relates to Stage 2 of the project is available in the most recent project construction compliance report (March 2018).	Open To be closed following completion of construction of the entire Project in mid to late 2018
C27	Unless otherwise approved by the Director General in accordance with this condition, the sites for ancillary facilities associated with the construction of the project shall:	The requirements of this condition were incorporated into the CEMPs for each stage of construction. See discussion provided for MCoA B30. Both the main site compounds in the northern and southern ends of	Open To be closed following completion of construction of the entire Project in mid to

MCo A	Requirement	Status / Reference	Comment
	<p>a be located more than 50 metres from a waterway;</p> <p>b have ready access to the road network or direct access to the construction corridor;</p> <p>c be located in areas of low ecological significance and require minimal clearing of native vegetation (not beyond that already required by the project);</p> <p>d be located on relatively level land;</p> <p>e be separated from the nearest residences by at least 200 metres (or at least 300 metres for a temporary batching plant);</p> <p>f be above the 20 ARI flood level unless a contingency plan to manage flooding is prepared and implemented;</p> <p>g not unreasonably affect the land use of adjacent properties;</p> <p>h provide sufficient area for the storage of raw materials to minimise, to the greatest extent practical, the number of deliveries required outside standard construction hours; and</p> <p>i be located in areas of low heritage conservation significance (including identified Aboriginal cultural value) and not impact on heritage sites beyond those already impacted by the project.</p> <p>Ancillary sites identified that do not meet the above criteria shall be assessed against this criteria to demonstrate how any impacts can be mitigated and managed to acceptable standards (including demonstrating consistency with project impacts identified in the documents listed under condition 41, to the satisfaction of the Director General. Such assessment(s) can be submitted separately or as part of the Construction Environmental Management Plan required under condition B30.</p>	<p>the Project have been approved under Major Consistency Reviews and were both compliant with this condition.</p> <p>An approval from the DP&E was received on 17 December 2015 for the Northern Concrete Batch plant to operate within 300m of a nearby sensitive receiver.</p> <p>A Major Consistency Review to construct and operate a concrete batch plant opposite Scotts Head Road, Macksville was approved during the reporting period. An approval to place the batch plant within 300m of a residents was received from DPE on the 28/9/17.</p> <p>A Major Consistency Review to construct and operate an asphalt batch plant at 124 Albert Drive, Warrell Creek was approved during the reporting period. This facility is more than 300m from the nearest residence.</p> <p>An addendum to the Minor Consistency Review for Temporary Stockpiles outside of the Project Boundary was prepared to include crushing operations at one of the stockpile sites. The crushing operations were located more than 300m from the nearest sensitive receiver.</p> <p>Further detail on the requirements of this condition as it relates to Stage 2 of the project is available in the most recent project construction compliance report (March 2018).</p>	<p>late 2018</p>
C27A	<p>a The Proponent may undertake archaeological investigations at ancillary sites that do not meet the criterion set out in condition C27(i) of this approval, where this is required to assess the potential non-Aboriginal and Aboriginal archaeological impacts of the ancillary facility on previously unidentified heritage sites.</p> <p>b Any archaeological investigations undertaken under this condition must be undertaken consistent with the Construction Heritage Management Plan required under Condition B31 (e) or a methodology prepared in</p>	<p>The requirements of this condition were incorporated into the HMP for the project. See discussion provided for MCoA B31(e).</p> <p>Further detail on the requirements of this condition as it relates to Stage 2 of the project is available in the most recent project construction compliance report (March 2018).</p>	<p>Open</p> <p>To be closed following completion of construction of the entire Project in mid to late 2018</p>

MCo A	Requirement	Status / Reference	Comment
	<p>consultation with OEH and approved by the Director General.</p> <p>c The results of any relevant archaeological investigations undertaken under this condition must be described</p>		
C28	<p>The Director General's approval is not required for minor ancillary facilities (e.g. lunch sheds, office sheds, and portable toilet facilities) that do not comply with the criteria set out in condition C27 of this approval and which:</p> <p>a are located within an active construction zone within the approved project footprint; and</p> <p>b have been assessed by the Environmental Representative to have:</p> <p>(i) minimal amenity impacts to surrounding residences, with consideration to matters such as noise and vibration impacts, traffic and access impacts, dust and odour impacts, and visual (including light spill) impacts, and</p> <p>(ii) minimal environmental impact in respect to waste management, and no impacts on flora and fauna, soil and water, and heritage beyond those approved for the project; and</p> <p>have environmental and amenity impacts that can be managed through the implementation of environmental measures detailed in a Construction Environment Management Plan for the project.</p>	<p>The requirements of this condition were incorporated into the CEMPs prepared for each stage of construction. See discussion provided for MCoA B30.</p>	<p>Open</p> <p>To be closed following completion of construction of the entire Project in mid to late 2018</p>

MCo A	Requirement	Status / Reference	Comment
PRIOR TO OPERATIONS			
D1	Prior to the commencement of operation, the Proponent shall incorporate the project into its existing environmental management system.	Ongoing operational requirements, subject to this approval, will be incorporated into the Roads and Maritime operational management system.	Open To be closed following opening of entire project in early 2018
OPERATIONAL NOISE			
E1	<p>Within 12 months of the commencement of operation of the project, or as otherwise agreed by the Director General, the Proponent shall undertake operational noise monitoring to compare actual noise performance of the project against noise performance predicted in the review of noise mitigation measures required by condition C12 and prepare an Operational Noise Report to document this monitoring. The Report shall include, but not necessarily be limited to:</p> <ul style="list-style-type: none"> a noise monitoring to assess compliance with the operational noise levels predicted in the review of operational noise mitigation measures required under condition C12 and documents specified under condition A1 of this approval; b a review of the operational noise levels in terms of criteria and noise goals established in the Environmental Criteria for Road Traffic Noise (EPA, 1999); c methodology, location and frequency of noise monitoring undertaken, including monitoring sites at which project noise levels are ascertained, with specific reference to locations indicative of impacts on sensitive receivers; d details of any complaints and enquiries received in relation to operational noise generated by the project between the date of commencement of operation and the date the report was prepared; e any required recalibrations of the noise model taking into consideration factors such as actual traffic numbers and proportions; 	<p>Noted.</p> <p>As detailed in the Staging Report, within 12 months of the commencement of operation on Stage 2a and Stage 2b or as otherwise agreed, Roads and Maritime will undertake operational noise monitoring, and prepare and submit a report addressing the requirements of this condition.</p> <p>Note, it is anticipated that Stage 2a will operate at a reduced speed limited until opening of the entire project. Operational noise monitoring therefore would not take place until the design speed limit is in place (ie 110 kilometres per hour). Also, due to the geographical relationship between Stage 2a and Stage 2b, one operational noise report would be prepared to cover both stages. The report would be prepared and submitted within 60 days of completion of the operation noise monitoring as prescribed by this condition.</p>	<p>Open</p> <p>To be closed approximately 12 months following opening of the entire project, which is expected in mid 2018.</p>

MCo A	Requirement	Status / Reference	Comment
	<p>f an assessment of the performance and effectiveness of applied noise mitigation measures together with a review and if necessary, reassessment of all feasible and reasonable mitigation measures; and</p> <p>g identification of any additional feasible and reasonable measures to those identified in the review of noise mitigation measures required by condition C12, that would be implemented with the objective of meeting the criteria outlined in the <i>Environmental Criteria for Road Traffic Noise</i> (EPA, 1999), when these measures would be implemented and how their effectiveness would be measured and reported to the Director General and the EPA.</p> <p>The Proponent shall provide the Director General and the EPA with a copy of the Operational Noise Report within 60 days of completing the operational noise monitoring referred to a) above and no later than 12 months after the date of the commencement of operation, or as otherwise agreed by the Director General.</p>		

Appendix B Statement of Commitments
Compliance Table

SoC	Requirement	Stage	Status	Reference / Comment
ENVIRONMENTAL MANAGEMENT				
M1	The head contractor for the project will have and environmental management system.	Preconstruction and Construction	<p>AFJV were appointed the Roads and Maritime construction partner for Stage 2. AFJV Venture has an environmental management system in place that fulfills the requirements of ISO 14001.</p> <p>Further detail on the requirements of this commitment as it relates to Stage 2 of the project is available in the most recent project construction compliance report (March 2018).</p>	<p>Open</p> <p>To be closed following completion of construction of the entire Project in mid to late 2018</p>
M2	Suitably qualified and experienced personnel will develop and implement project specific environmental management plans and procedures, incorporating as a minimum the mitigation and management measures in the environmental assessment.	Preconstruction and Construction	<p>A CEMP and associated sub-plans were developed to address the requirements of this commitment on Stage 2 of the project. See response provided in Table 1 / MCoA B30.</p> <p>Further detail on the requirements of this commitment as it relates to Stage 2 of the project is available in the most recent project construction compliance report (March 2018).</p>	<p>Open</p> <p>To be closed following completion of construction of the entire Project in mid to late 2018</p>
M3	RTA and the contractor will implement a performance and compliance program.	Preconstruction and Construction	<p>Roads and Maritime has developed and implemented a Compliance Tracking Program in accordance with MCoA B25 which was approved by DP&E on 20 March 2013 and updated and approved by DP&E on the 16/12/14.</p> <p>This report forms part of Roads and Maritime's notification to DP&E as to the anticipated opening of Stage 2b of the project</p>	<p>Open</p> <p>To be closed following completion of construction of the entire Project in mid to late 2018</p>
COMMUNITY CONSULTATION				

SoC	Requirement	Stage	Status	Reference / Comment
CC1	<p>Keeping the community informed will include:</p> <ul style="list-style-type: none"> regular project updates. prior notice of project activities. changes to traffic and access and works outside standard working hours. contact details for enquiries. <p>Targeted consultation with affected individuals or groups will occur as necessary (e.g. waterway users, farmers, noise affected residents, etc.).</p>	Preconstruction and Construction	Refer to additional detail provided in response MCoA B28 for status update	<p>Open</p> <p>To be closed following completion of construction of the entire Project in mid to late 2018.</p>
CC2	<p>Complaint management will include:</p> <ul style="list-style-type: none"> A published 24 hour toll free complaints number. Directions on how to register a complaint. Acknowledgment of complaints within eight working hours. Complaint recording. Tracking of complaints until resolution. 	Preconstruction and Construction	<p>Refer above to CC1</p> <p>A 24 hour toll free complaints number has been publicised on the project webpage</p>	<p>Open</p> <p>To be closed following completion of construction of the entire Project in mid to late 2018</p>
TRAFFIC AND TRANSPORT				
T1	Construction vehicle movements and work programs will incorporate traffic control measures to minimise traffic and transport impacts on local roads and the existing Pacific Highway.	Preconstruction and Construction	<p>The Traffic Management & Safety Plan (TM&SP) has been prepared by AFJV and approved by DPE on the 16/12/14.</p> <p>Refer to additional detail provided in response MCoA B31(a) for status update</p>	<p>Open</p> <p>To be closed following completion of construction of the entire Project in mid to late 2018</p>
T2	Any use of non-arterial roads by construction traffic will require the preparation of pre-construction and post construction dilapidation reports, with copies to go to the relevant roads authority. Repair of any damage resulting from construction (normal wear and tear), will occur, unless there are alternative arrangements with the relevant roads authority.	Preconstruction and Construction	Refer to additional detail provided in response MCoA B23 for status update	<p>Open</p> <p>To be closed following completion of construction of the entire Project in mid to late 2018</p>

SoC	Requirement	Stage	Status	Reference / Comment
T3	Construction vehicle movement arrangements will limit impacts on other road users (including pedestrians, vehicles, cyclists and disabled persons), having regard to other road works in the area, local traffic movement requirements, and peak traffic volumes, including those during long weekends and holiday periods.	Preconstruction and Construction	<p>The Project must comply with the Road Occupancy Licence (ROL) regime, which limits the use of traffic control during peak times, weekends and major events/holiday periods.</p> <p>TCP's are developed to incorporate all road users and construction requirements.</p> <p>Vehicle Movement Plans (VMP) are developed to ensure that all construction personnel are aware of the permitted vehicle movements, interaction between plant and workers on foot and any site specific details such as bus stops, pedestrian routes and characteristics of local vehicle movements.</p>	<p>Open</p> <p>To be closed following completion of construction of the entire Project in mid to late 2018</p>
T4	Where the Proposal temporarily or permanently affects any legal property access, the provision of feasible and reasonable alternative access to an equivalent standard will be necessary, unless a property owner agrees to alternative arrangements.	Preconstruction and Construction	AFJV consults with relevant landowners on construction of the project, addressing construction activities and approach to minimise intrusion and disruption to property access. Property access has been maintained to an equivalent standard unless agreed with the resident.	<p>Open</p> <p>To be closed following completion of construction of the entire Project in mid to late 2018</p>
T5	Construction vehicle movements and work programs will incorporate traffic control measures to maintain access to state forests.	Preconstruction and Construction	Refer to additional detail provided in response MCoA B22 for status update	<p>Open</p> <p>To be closed following completion of construction of the entire Project in mid to late 2018</p>
NOISE AND VIBRATION				
N1	Further investigation of all feasible and reasonable mitigation and management measures to minimise construction noise at sensitive	Preconstruction, Construction	Measures to minimise construction noise have been investigated during detailed	<p>Open</p> <p>To be closed following</p>

SoC	Requirement	Stage	Status	Reference / Comment
	receivers will occur as part of detailed design (including consideration of early implementation of operational noise mitigation measures). Noise and vibration monitoring will measure against predicted levels and assess effectiveness. Implementation of further feasible and reasonable mitigation measures will occur where necessary.	and Operation	design. Mitigation measures have been incorporated into the approved Noise and Vibration Management Plan (NVMP). Refer to additional detail provided in response MCoA B31(c) for status update	completion of construction of the entire Project in mid to late 2018
N2	Consultation with affected education institutions during construction works in their vicinity will attempt to limit audible construction works during important events, such as examination periods.	Construction	Noise sensitive areas have been investigated as part of developing the NVMP covering requirements for mitigation of potential noise impacts to educational institutions during construction. It is noted that the nearest educational institute is located approximately 400m to the west of the alignment at the floodplain south of Nambucca River. Refer to additional detail provided in response MCoA B31(c) for status update	Open To be closed following completion of construction of the entire Project in mid to late 2018
N3	Best practice mitigation and management measures will be used to minimise construction noise and vibration at sensitive receivers.	Preconstruction and Construction	Mitigation measures are incorporated into the approved NVMP. This is addressed in MCoAs C3 to C11 in regard to construction noise.	Open To be closed following completion of construction of the entire Project in mid to late 2018
N4	Construction would normally be limited to the following hours: <ul style="list-style-type: none"> Between 6am and 6pm Monday to Friday. Between 7am and 4pm Saturday. There would be no works outside these hours or on Sundays or public holidays except: <p>a) Works that do not cause construction noise to be audible at any</p>	Preconstruction and Construction	The requirements of this SoC are included within the approved NVMP Sub-plan for implementation by AFJV during construction. Refer to additional detail provided in response MCoA C3 & C4 for status update.	Open To be closed following completion of construction of the entire Project in mid to late 2018

SoC	Requirement	Stage	Status	Reference / Comment
	<p>sensitive receivers.</p> <p>b) For the delivery of materials required outside these hours by the Police or other authorities for safety reasons.</p> <p>c) Where it is required in an emergency to avoid the loss of lives, property and/or to prevent environmental harm.</p> <p>d) Any other work as agreed through negotiations between the RTA and potentially affected sensitive receivers. Any such agreement must be recorded in writing and a copy kept on site for the duration of the works.</p> <p>e) Where the work is identified in the CNVMP and approved as part of the Construction Environmental Management Plan.</p> <p>f) As agreed by Department of Planning and or Department of Environment, Climate Change and Water in an EPL for the construction of the Proposal Local residents and the Department of Environment, Climate Change and Water must be informed of the timing and duration of work approved under items (d) and (e) at least 48 hours before that work commences.</p>			
N5	<p>All reasonable attempts will be made to contact sensitive receivers located within 500 metres of a blast location. The contact will be at least 48 hours before a blast and will include a schedule of blast time(s), and a telephone contact name and number.</p>	<p>Preconstruction and Construction</p>	<p>The Project's Blast Management Plan outlines the requirements for community consultation leading up to a blast. The Blast Management Plan includes notification to be made with residents 500m from the blast at least 48 hours prior to the blast via email or SMS which will include the date, time and no. of blasts. This was undertaken throughout the production blasting program which was completed on the 31/8/16.</p>	<p>Closed 31 August 2016</p>

SoC	Requirement	Stage	Status	Reference / Comment
N6	Where complaints relating to noise or vibration impacts as a result of extended workings cannot be satisfactorily resolved with the affected residents then works hours will revert back to standard working hours at that particular location for that particular activity. Resident(s) will be consulted before recommencing any works outside standard working hours. Any complaints received in relation to working hours will be made available to DoP and DECCW.	Construction	The requirements of this SoC are included within the NVMP Sub-plan and OOHW Procedure for implementation by AFJV during construction. Isolated complaints have been received in relation to works occurring outside of standard construction hours. All complaints have been satisfactorily resolved, with ongoing works being cancelled on one occasion.	Open To be closed following completion of construction of the entire Project in mid to late 2018
N7	Confirmation of all feasible and reasonable mitigation and management measures to minimise operational noise at sensitive receivers will occur as part of detailed design. Implementation of the measures would occur as construction proceeds.	Preconstruction, Construction and Operations	<p>Roads and Maritime have commenced at-house noise treatments to mitigate operational noise impacts to over 150 residences. Residences that are highly affected have been targeted in the first package and remaining residences will be progressively rolled out over the course of the project.</p> <p>RMS engaged the contractor GHD to oversee the installation of at house noise mitigation treatments. RMS is in regular communication with DP&E regarding the status of at house noise mitigation treatments.</p> <p>As of the 17 May 2018, the status of noise treatments for the 150 is as follows:</p> <ul style="list-style-type: none"> • 138 properties have been completed with all scoped noise treatments installed. • 6 properties are currently having their noise treatments installed as part of Package 5, Package 6 and Package 7 • 1 property has an approved scope of 	Open To be closed following completion of construction of the entire Project in mid to late 2018

SoC	Requirement	Stage	Status	Reference / Comment
			<p>works however requires an approved DA for proposed renovation works before RMS can proceed.</p> <ul style="list-style-type: none"> • 1 property has an approved scope of works however the resident has declined to have the treatments installed. • 1 property requires repairs to the house before any treatment works can commence. • 1 property is in probate awaiting resolution before works can commence. • 2 properties have been delayed with residents on holidays due to return early June 2018. <p>In summary, 138 of the 150 eligible residences (92%) have been treated. The 6 properties currently having treatments installed are anticipated to be completed by the opening of stage 2B. The remaining 6 properties on hold will be commenced as soon as RMS receives approval to proceed.</p>	
N8	Monitoring of operational noise will be undertaken within one year after completion of construction. If monitoring indicates a clear trend that traffic noise levels exceed those predicted, investigation of all further feasible and reasonable management measures will occur. Consultation with a suitably qualified and experienced acoustic specialist and the affected property owner will be necessary during the development of any additional mitigation measures.	Operations	Refer to additional detail provided in response MCoA E1 for status update.	Open To be closed following completion of construction of the entire Project in mid to late 2018
FLORA AND FAUNA				
F1	Clearing of native vegetation (including endangered ecological	Preconstruction	Refer to additional detail provided in	Open

SoC	Requirement	Stage	Status	Reference / Comment
	communities (EECs)) will be restricted to the minimum area necessary for construction.	and Construction	response MCoA C1 for status update.	To be closed following completion of construction of the entire Project in mid to late 2018
F2	A qualified ecologist will identify any vegetation (including Marsdenia longiloba) to be retained and to be clearly delineated on work plans within the construction corridor. Erection of flagging/fencing on-site prior to any construction works, which is to remain in place for the full construction period, will clearly delineate this vegetation.	Preconstruction and Construction	Threatened flora species are protected from the Project works during the construction period using delineation flagging. The location of protected vegetation is shown on the Project's Sensitive Area Plan mapping. A qualified Project Ecologist has been engaged by AFJV as part of the project team to advise on erection of vegetation flagging/fencing to be in place throughout construction.	Open To be closed following completion of construction of the entire Project in mid to late 2018
F3	A threatened flora survey will be undertaken prior to clearing to identify individuals to be translocated and to confirm the extent of clearing. Erection of exclusion fencing to prevent any further encroachment into Newry State Forest to the east of the construction footprint. Threatened species directly impacted by the Proposal will be translocated to a suitable location outside the impact zone. A further visual inspection will be conducted post clearance to identify threatened species which may be indirectly impacted outside the cleared zone. Landscape planting to commence along the road boundary as soon as possible during construction.	Preconstruction and Construction	AFJV has undertaken ground truthing ecological surveys of the alignment to identify threatened flora individuals that require translocation. Threatened flora noted in the Threatened Flora Management Plan as Directly or Indirectly impacted have been translocated to protected areas outside of the clearing limits. These areas have been delineated with no-go zone fencing and signage. Additional threatened plants have been identified during the Pre-clearing inspections undertaken by the Project Ecologist. These plants have been translocated in accordance with the TFMP. Note: requirements for Newry State Forest not applicable to Project (Newry State Forest north of WC2NH). The Urban Design and Landscape Plan has been approved by the DPE. Permanent landscaping including batter	Open To be closed following completion of construction of the entire Project in mid to late 2018

SoC	Requirement	Stage	Status	Reference / Comment
			stabilisation has commenced in accordance with this Plan.	
F4	Plantings of rusty plum (<i>Amorhosperrum whitei</i>) in areas of suitable habitat adjacent to the Proposal will follow from seed collection and propagation.	Construction	Seed collection and propagation of <i>A.whitei</i> is being managed by Eco's Environmental on behalf of AFJV in accordance with the TFMP. The individuals will be direct drilled along the alignment once suitable.	Open To be closed following completion of construction of the entire Project in mid to late 2018
F5	Site induction of construction workers will inform and instruct them of vegetation to be retained and on the identification of threatened species	Preconstruction and Construction	The site induction covers the identification of key threatened flora species located along the alignment	Open To be closed following completion of construction of the entire Project in mid to late 2018
F6	A suitably qualified ecologist will undertake pre-clearance surveys for threatened species including frogs. Searches will include nests and hollow bearing trees. Re-location of fauna species at risk of injury found in pre-clearance surveys or during construction will be in suitable habitat as close as possible to the area in which they were found. Immediately prior to clearing an inspection will confirm that the sites subject to pre-clearance surveys remain free of fauna.	Preconstruction and Construction	A qualified Project Ecologist has been engaged by AFJV as part of the project team. The Project Ecologist undertakes inspections of all areas prior to clearing to inspect for potential fauna habitat, nests and hollow bearing trees. Fauna at risk of injury is relocated outside of the clearing area where practical.	Open To be closed following completion of construction of the entire Project in mid to late 2018
F7	Where feasible and reasonable the identification and distribution of natural and artificial habitat features and resources (such as hollow-bearing trees, hollow logs, nest boxes and bush rocks) will occur along the Proposal. This relocation will limit injury to fauna and damage to existing vegetation. A nest box plan will be developed for the Proposal.	Preconstruction and Construction	The AFJV Project Ecologist has identified hollows and coarse woody debris that has been reused within the Project alignment for habitat. The Nest Box plan prepared by Roads and Maritime was approved by DPE on 20/03/2013. All nest boxes to be installed prior to clearing commencing have been installed. Installation of next boxes post clearing is now complete.	Open To be closed following completion of construction of the entire Project in mid to late 2018
F8	Retention of mature trees in the median at locations identified in the environmental assessment will provide a stepping stone for gliders.	Preconstruction and	Refer to additional detail provided in response MCoA B4 for status update.	Open To be closed following

SoC	Requirement	Stage	Status	Reference / Comment
	Protection of these trees will occur (F2), and lopping and pruning is not to occur without expert advice.	Construction		completion of construction of the entire Project in mid to late 2018
F9	Provision of fauna crossings will be as identified in the environmental assessment. All fauna crossings will be confirmed with the DECCW and I&I (Fisheries) during the detailed design phase.	Preconstruction and Construction	Refer to additional detail provided in response MCoA B1, B2 and B3 for status update.	Closed
F10	Design and construction of waterway crossings will be in accordance with the fish habitat classification of each waterway and in consultation with the Department of Industry and Investment. All fauna crossings will be confirmed with the DECCW and I&I (Fisheries) during the detailed design phase.	Preconstruction and Construction	Refer to additional detail provided in response MCoA B1, B2 and B3 for status update.	Closed
F11	Erection of fauna exclusion fencing (e.g. floppy-top fencing) along the Proposal at appropriate locations will direct fauna movement towards fauna-crossing structures.	Preconstruction and Construction	Refer to additional detail provided in response MCoA B3 for status update.	Closed
F12	Development of an offset strategy will occur in consultation with the Department of Environment, Climate Change and Water.	Preconstruction, Construction and Operations	Refer to additional detail provided in response MCoA B8 for status update.	Closed
F13	A targeted, adaptive monitoring program will be undertaken for a minimum of 12 months to assess the effectiveness of fauna and flora impact mitigation measures. After 12 months a report will be completed to assess the need for additional measures and/or further targeted monitoring.	Preconstruction and Construction	The Ecological Monitoring Program was approved by DP&E as part of the Flora and Fauna Management Plan on the 16/12/14. An updated Ecological Monitoring Program was submitted to DP&E on 5 March 2018 which was approved on 14 March 2018. An Annual Report of the Ecological Monitoring outcomes was produced after the first, second and third years of construction.	Open To be closed following operational monitoring which will commence in full following the construction of the entire Project in mid to late 2018
F14	The RTA will set bed levels for culverts and ledges for combined fauna passage in consultation with the Department of Environment, Climate Change and Water.	Preconstruction and Construction	Early design consultation with DPI (Fisheries) have been undertaken and included in tender documentation. The culverts requiring fish passage as	Open To be closed following completion of construction of the entire Project in mid to

SoC	Requirement	Stage	Status	Reference / Comment
			<p>agreed with Fisheries have been noted in Table 4.1 of the SWTC.</p> <p>The Design is currently progressing to incorporate the requirements of Table 4.1.</p> <p>The bed levels and ledges for fauna culverts have been designed. AFJV has provided agencies with design drawings for review and comment.</p> <p>Issues are being raised at the monthly ERG meetings and closed out through site visits and/or ongoing communication.</p>	late 2018
ABORIGINAL HERITAGE				
AH1	The protection of items and areas of archaeological significance not directly affected by construction will occur.	Preconstruction and Construction	Heritage sites identified during the EA and subsequent Cultural Heritage Assessments are identified on the Project's Sensitive Area Plans. The areas are flagged on site with no-go zone flagging and signage to prevent construction access.	Open To be closed following completion of construction of the entire Project in mid to late 2018
AH2	There will be protocols established and implemented to manage any previously unidentified Aboriginal objects or skeletal remains encountered during construction. All works in the vicinity of the find will cease to obtain Aboriginal heritage specialist advice and inform the Department of Environment, Climate Change and Water.	Preconstruction and Construction	The approved HMP incorporates specific plans and procedures including Roads and Maritime Standard Management Procedure – Unexpected Heritage Items	Open To be closed following completion of construction of the entire Project in mid to late 2018
AH3	The management of any Aboriginal heritage items directly affected will be in consultation with Aboriginal stakeholders and the Department of Environment, Climate Change and Water.	Preconstruction and Construction	<p>Archaeological Salvage works have been undertaken by Roads and Maritime in consultation with Aboriginal stakeholders and DP&E. Sites located within the Project Boundary have been cleared to commence construction.</p> <p>Subsequent Cultural Heritage Assessments undertaken for the Project have not identified any Aboriginal Heritage items that will be directly</p>	Open To be closed following completion of construction of the entire Project in mid to late 2018

SoC	Requirement	Stage	Status	Reference / Comment
			affected. An artefact has been salvaged to permit the construction of a permanent access road. The Cultural Heritage Assessment for this work has been provided to the RAP's and the proposed design was discussed during the Aboriginal Focus Group, including OEH during a meeting in September 2015. The item has been salvaged and provided to the RAP's for safe keeping until the end of the Project. RMS will provide correspondence to DP&E closer to project completion verifying reburial if required.	
AH4	All construction personnel will receive training on their obligations for protection of Aboriginal cultural materials, including information on site locations, conservation management and legal obligations in regard to Aboriginal cultural materials.	Preconstruction and Construction	The HMP includes an Aboriginal heritage education and training package. AFJV will implement the requirements of the HMP and subordinate management procedures, and training packages for heritage induction and training. The first training session was held in October 2015. A follow up training session was held in March 2017.	Open To be closed following completion of construction of the entire Project in mid to late 2018
AH5	The RTA will comply with the NSW Government's Aboriginal Participation in Construction Guidelines.	Preconstruction and Construction	An Aboriginal Participation Plan is currently being implemented by AFJV. Compliance with the Aboriginal Participation Plan is discussed in the regular Aboriginal Focus Group Meetings.	Open To be closed following completion of construction of the entire Project in mid to late 2018
NON-ABORIGINAL HERITAGE				
NH1	The detailed design will minimise impacts to identified non-Aboriginal heritage items where feasible and reasonable.	Preconstruction and Construction	Relevant site surveys for WC2NH (Ferry Punt at Boulton Hill, and old municipal tips) have been undertaken to determine relevant sites, these areas have been identified with no-go zone flagging and signage.	Open To be closed following completion of construction of the entire Project in mid to late 2018

SoC	Requirement	Stage	Status	Reference / Comment
			The detailed design has avoided impacts to non-aboriginal heritage items identified in the approved HMP.	
NH2	If any material of potential archaeological significance is unearthed, work will cease to obtain specialist heritage advice.	Construction	The approved HMP incorporates specific plans and procedures including Roads and Maritime Standard Management Procedure – Unexpected Heritage Items	Open To be closed following completion of construction of the entire Project in mid to late 2018
WATER QUALITY AND HYDROLOGY				
W1	Minimisation of the area of soil exposure during construction.	Preconstruction and Construction	The Project works are inspected on a fortnightly basis by the Project Soil Conservationist who provides guidance and advice to reduce the area of soil exposed during construction. The clearing and topsoil strip phases of construction have been undertaken progressively to avoid exposing soil to erosion. Batter stabilisation and progressive rehabilitation has commenced and positive landscaping outcomes are being achieved in accordance with the approved Urban Design and Landscaping Plan.	Open To be closed following completion of construction of the entire Project in mid to late 2018
W2	Detailed design will further investigate any additional feasible and reasonable mitigation and management measures to minimise construction erosion and sedimentation.	Preconstruction and Construction	Sediment basins and other water quality control measures have been designed and managed by AFJV during the detailed design phase. These have been further developed and managed by AFJV and the Project Soil Conservationist after the detailed design was released. The design of the alignment aims to minimise the footprint where possible in order to minimise potential for erosion and sedimentation.	Open To be closed following completion of construction of the entire Project in mid to late 2018

SoC	Requirement	Stage	Status	Reference / Comment
W3	Monitoring of groundwater impacts and surface water quality upstream and downstream of the site during construction will determine the effectiveness of mitigation strategies. Implementation of additional feasible and reasonable management measures will occur if necessary.	Preconstruction and Construction	The SWMP incorporates a: Water Quality Monitoring Program; and Groundwater Management Strategy AFJV is currently undertaking the monitoring of groundwater and surface water during construction in accordance with the approved plans. Monitoring results are discussed during the monthly ERG meetings and are provided to the EPA in the EPA Monthly Report. Monitoring data is also available on the ACCIONA website.	Open To be closed following completion of construction of the entire Project in mid to late 2018
W4	Development and implementation of specific construction measures for in-stream works to limit water quality impacts will occur in consultation with relevant government agencies.	Preconstruction and Construction	AFJV have developed specific EWMS's for works in or near waterways. The EWMS's have been reviewed by DPI Fisheries and the EPA. DPI Fisheries are specifically notified prior to undertaking works in or near waterways. These areas are also regularly inspected during ERG meetings by DPI Fisheries and the EPA.	Open To be closed following completion of construction of the entire Project in mid to late 2018
W5	Managing operational water quality will occur by applying RTA's Code of Practice for Water Management – Road Development and Management (1999).	Construction and Operations	Operational water quality basins have been designed in accordance with the SWTC. Roads and Maritime will manage operational water quality during the operational phase.	Open Ongoing throughout operation
W6	Investigation of the potential for changes in the groundwater table will take place before starting any major earthworks. Where a potential for change is identified, the significance of the change and any resultant impacts will be determined and measures to manage the changes will be designed and implemented as necessary.	Preconstruction and Construction	Roads and Maritime has prepared the monitoring program and implementation for the pre and post construction requirements. AFJV is currently monitoring groundwater in accordance with the approved groundwater monitoring program.	Open To be closed following completion of operational monitoring following completion of construction of the entire Project in mid to late 2018

SoC	Requirement	Stage	Status	Reference / Comment
W7	Baseline monitoring of groundwater levels and chemical levels at cutting sites near springs, creeks or endangered ecological communities prior to construction commencing.	Preconstruction and Construction	Roads and Maritime has undertaken baseline monitoring up to construction commencing. AFJV is currently implementing the construction-phase monitoring requirements.	Closed
SOILS AND FILL				
S1	Identification and management of Acid Sulphate Soils will be in accordance with the Guidelines for the Management of Acid Sulphate materials: Acid Sulphate Soils, Acid Sulphate Rock and Mono-sulphidic Black Ooze (RTA 2005).	Preconstruction and Construction	<p>The approved SWMP includes an Acid Sulphate Material Management Plan which is based on this guideline document. This is currently being implemented on site.</p> <p>A small quantity of Acid Sulphate soil has been generated from the piling works within the floodplain and adjacent to Nambucca River and Lower Warrell Creek. This has been treated in accordance with the approved SWMP.</p>	Open To be closed following completion of construction of the entire Project in mid to late 2018
S2	There will be identification, investigation and appropriate management of areas of potential soil contamination (including works in the vicinity of the old municipal tip site in Nambucca State Forest).	Preconstruction and Construction	<p>Potential contamination within and adjacent to the Project site has been assessed and will be managed in consideration of design requirements and construction. All known areas of soil contamination were assessed in reports prepared by Coffeys, including the April 2014 report. Contaminated areas are managed in accordance with RMS specification requirements including the preparation and implementation of a Remedial Action Plan.</p> <p>In addition, procedures have been included within the SWMP in dealing with unexpected contamination detected during construction</p>	Open To be closed following completion of construction of the entire Project in mid to late 2018
AIR QUALITY				

SoC	Requirement	Stage	Status	Reference / Comment
AQ1	To minimise windblown, traffic generated or equipment generated dust emissions, there will be feasible and reasonable mitigation and management measures.	Preconstruction and Construction	AFJV has detailed management and mitigation measures to achieve this requirement within the approved Air Quality Management Plan (AQMP). Refer to additional detail provided in response MCoA C2.	Open To be closed following completion of construction of the entire Project in mid to late 2018
AQ2	Dust generating activities will stop where visible dust is being emitted outside the construction corridor and dust suppression measures are ineffective.	Preconstruction and Construction	AQMP includes the locations of dust sensitive areas and indicative monitoring locations. Specific controls for managing potential for air quality (dust) impacts are prescribed within the approved AQMP. Refer to additional detail provided in response MCoA C2.	Open To be closed following completion of construction of the entire Project in mid to late 2018
GREENHOUSE GASES AND ENERGY				
G1	Wherever feasible and reasonable detailed design will consider whole of life reductions in greenhouse gas emissions and energy consumption.	Preconstruction and Construction	The requirements of this commitment were incorporated into a Construction Waste and Energy Management Sub-plan prepared as part of the CEMP for Stage 2 of the project. Refer to additional detail provided in MCoA B30. Further detail on the requirements of this commitment as it relates to Stage 2 of the project is available in the most recent project construction compliance report (March 2018).	Open To be closed following completion of construction of the entire Project in mid to late 2018
G2	Energy efficient work practices will be adopted to limit energy use. Where reasonable and feasible, equipment and management measures will be adopted to minimise energy use and greenhouse gas production.	Preconstruction and Construction	The requirements of this commitment were incorporated into a Construction Waste and Energy Management Sub-plan prepared as part of the CEMP for Stage 2 of the project. Refer to additional detail provided in MCoA B30. Further detail on the requirements of this commitment as it relates to Stage 2 of the project is available in the most recent project construction compliance report	Open To be closed following completion of construction of the entire Project in mid to late 2018

SoC	Requirement	Stage	Status	Reference / Comment
			(March 2018).	
VISUAL AMENITY AND DESIGN				
UD1	The preparation of detailed urban and landscape design will be in consultation with Nambucca and Bellingen Shire councils and the community. The detailed design and implementation of built elements and landscapes and the mitigation of residual impacts will be in accordance with the visual and urban design objectives and principles of the Proposal.	Preconstruction and Construction	Refer to additional detail provided in response MCoA B3 for status update.	Open To be closed following completion of construction of the entire Project in mid to late 2018
UD2	The species to be used in the landscaping treatments will include native and locally indigenous plants.	Preconstruction and Construction	Included in SWTC App 15, R176, R178 and R179 in regards to urban design and landscape treatments. Refer to additional detail provided in response MCoA B3 for status update.	Open To be closed following completion of construction of the entire Project in mid to late 2018
UD3	Landscape and rehabilitation works will be subject to monitoring and maintenance where necessary for a minimum of two years after construction.	Construction and Operation	An Ecological Monitoring Program in response to MCoA B10 has been prepared to address the requirements of this commitment.	Open To be closed following completion of operational monitoring following completion of construction of the entire Project in mid to late 2018
HAZARDS AND RISKS				
HR1	Hazardous materials used during construction will be stored in bunded areas within construction sites. Hazardous materials will not be stored on the floodplain below the 20 year ARI flood level. Use of hazardous materials in floodplain areas will be limited to a daily or weekly threshold. Containers, workshops, plant, material stores and storage tanks will not be sited on the floodplain of watercourses where avoidable.	Preconstruction and Construction	See discussion provided for MCoA B30. For site/activity specific works, EWMS's have been prepared and implemented for the prevention and mitigation of potential hazards and risk. Hazardous materials are not stored within the floodplain or adjacent to creek lines.	Open To be closed following completion of construction of the entire Project in mid to late 2018

SoC	Requirement	Stage	Status	Reference / Comment
HR2	Potentially hazardous and contaminating activities (such as washing construction plant and handling hazardous chemicals) and activities with the potential for spillage such as refuelling, maintenance of equipment, mixing of cutting oil and bitumen will be in bunded areas or in other areas where suitable containment measures are in place to prevent discharge into watercourses.	Preconstruction and Construction	The requirements of this condition were incorporated into the SWPs of the CEMPs for each stage of construction.	Open To be closed following completion of construction of the entire Project in mid to late 2018
WASTE AND RESOURCE MANAGEMENT				
WR1	The waste minimisation hierarchy principles of avoid / reduce / re-use / recycle / dispose will apply to all aspects of the Proposal, including work programs, purchase strategies and site inductions. Quarterly assessments will identify opportunities for improvement.	Preconstruction and Construction	The requirements of this commitment were incorporated into a Construction Waste and Energy Management Sub-plan prepared as part of the CEMP for Stage 2 of the project. Refer to additional detail provided in response MCoA B30 for status update. Further detail on the requirements of this commitment as it relates to Stage 2 of the project is available in the most recent project construction compliance report (March 2018).	Open To be closed following completion of construction of the entire Project in mid to late 2018
WR2	Where reuse or recycling of water is not possible, it will be sent to an appropriately licensed facility.	Preconstruction and Construction	The requirements of this commitment were incorporated into a Construction Waste and Energy Management Sub-plan prepared as part of the CEMP for Stage 2 of the project. Water is reused or disposed in accordance with the Environment Protection Licence 20533. Refer to additional detail provided in response to MCoA B30. Further detail on the requirements of this commitment as it relates to Stage 2 of the project is available in the most recent project construction compliance report (March 2018).	Open To be closed following completion of construction of the entire Project in mid to late 2018

SoC	Requirement	Stage	Status	Reference / Comment
LANDUSE AND PROPERTY				
P1	Negotiation of all property acquisitions will be in accordance with the RTA Land Acquisition Policy Statement. Compensation assessment will be in accordance with the Land Acquisition (Just Terms Compensation) Act 1991.	Preconstruction and Construction	All property acquisitions associated with Stage 2 of the project have been undertaken in accordance with the requirements of this commitment. No further acquisitions are required Property purchases have all been completed in February 2016.	Closed
P2	The Department of Industry and Investment will have access to state forest land identified for acquisition by RTA to remove any harvestable timber within the footprint of the Proposal prior to commencement of construction. Access to state forest land adjacent to the Proposal will provide for forestry operations, fire management activities and recreation purposes.	Preconstruction and Construction	Roads and Maritime has reached agreement with Forestry Corporation in regards to this requirement, with proposal from Forestry Corporation on the work it will undertake in State Forests	Closed
P3	Where the Proposal adversely affects a licensed bore, dam or other property water supply, RTA will investigate an alternate source or negotiate compensation for the loss with the landowner.	Preconstruction and Construction	The Project has not impacted on any licenced bores to date. Supplementary water supplies (such as water tanks) have been provided to landowners where farm dams have been removed.	Open To be closed following completion of construction of the entire Project in mid to late 2018
SOCIO ECONOMIC IMPACTS				
S1	There will be ongoing consultation with affected businesses, agricultural and aquaculture landowners.	Preconstruction and Construction	Roads and Maritime and AFJV have an approved Community Involvement Plan (which covers the requirements of the Condition B28 Community Communication Strategy) to provide the mechanisms to facilitate communication between the Proponent, the Contractor, the Environmental Representative, the relevant Council and the local community (broader and local stakeholders) on the construction and environmental management of the project, covering all tasks and procedures in meeting the requirements of this SoC.	Open To be closed following completion of construction of the entire Project in mid to late 2018

SoC	Requirement	Stage	Status	Reference / Comment
S2	The identification of utilities and services potentially affected by construction, including requirements for diversion, protection and / or support will occur prior to the start of construction. Consultation with the service providers will determine alterations to services, the limitation of disruptions and requirements for advice to customers.	Preconstruction and Construction	The AFJV has actively consulted with Utilities providers and has prepared a design of the relocation of impacted public utilities. This is currently being implemented on site to prevent damage to necessary public utilities.	Open To be closed following completion of construction of the entire Project in mid to late 2018.
S3	Sites chosen for ancillary facilities will satisfy criteria outlined in Chapter 7 of the EA. Occupation and use of compound and work sites will seek to minimise disturbance to adjacent residents.	Preconstruction and Construction	Refer to additional detail provided in response MCoA C27 for status update.	Open To be closed following completion of construction of the entire Project in mid to late 2018
S4	Fencing will be erected around construction activities to prevent livestock from adjacent properties entering construction areas. Inclusion of water quality protection measures during the installation of in-stream structures to protect aquaculture.	Preconstruction and Construction	Rural fencing was installed prior to the commencement of substantial construction to prevent livestock entering active construction zones. The works in-stream incorporate water quality protection measures such as silt curtains and hydrocarbon booms.	Open To be closed following completion of construction of the entire Project in mid to late 2018