



## VARIATION TO CONDITIONS ATTACHED TO APPROVAL

### Project (EPBC No 2013/7101)

This decision to vary a condition of approval is made under section 143 of the *Environment Protection and Biodiversity Conservation Act 1999* (EPBC Act).

#### Approved action

Person to whom the approval is granted

NSW Roads and Maritime Services  
ABN: 76 236 371 088

#### Approved action

To upgrade approximately 19.5 kilometres (km) of the Pacific Highway, from the northern end of Allgomeria deviation, south of Warrell Creek to Old Coast Road, west of Nambucca Heads, on the mid north coast of New South Wales (NSW) [See EPBC Act referral 2013/7101].

#### Variation

Variation of conditions of approval

The variation is:

- Delete condition 1(h) attached to the approval and substitute with the condition specified below.
- Delete the definitions for Spotted-tail Quoll habitat, Koala habitat and Grey-headed Flying-fox habitat and Koala Management Plan and Spotted-tail Quoll Management Plan and substitute the definitions specified below.
- Delete first map in Appendix 1 referred to under the approval definition of Action and replace with the map below.
- Addition to Appendix 1 of two more detailed maps of the action related to the on and off ramps near Macksville.

Date of effect

This variation has effect on the date the instrument is signed

#### Person authorised to make decision

name and position

Shane Gaddes  
Assistant Secretary  
Compliance & Enforcement Branch

Signature

*S. Gaddes*

Date of decision

*3 October* 2016

## Conditions attached to the approval

1. The approval holder must not **clear** more than:

h) 26.1 ha of Milky Silkpod (*Parsonsia dorrigoensis*), comprising Mixed Floodplain Forest, Flooded Gum Open Forest and White Mahogany/Grey Gum/Ironbark Open Forest.

### Definition

**Koala habitat** means Blackbutt Open Forest – 75.2 ha, Mixed Floodplain Forest – 4.0 ha, White Mahogany/Grey Gum/Ironbark Moist Open Forest – 7.3 ha, Flooded Gum Moist Open Forest – 14.8 ha, and Swamp Mahogany/Paperbark Swamp Forest – 5.3 ha.

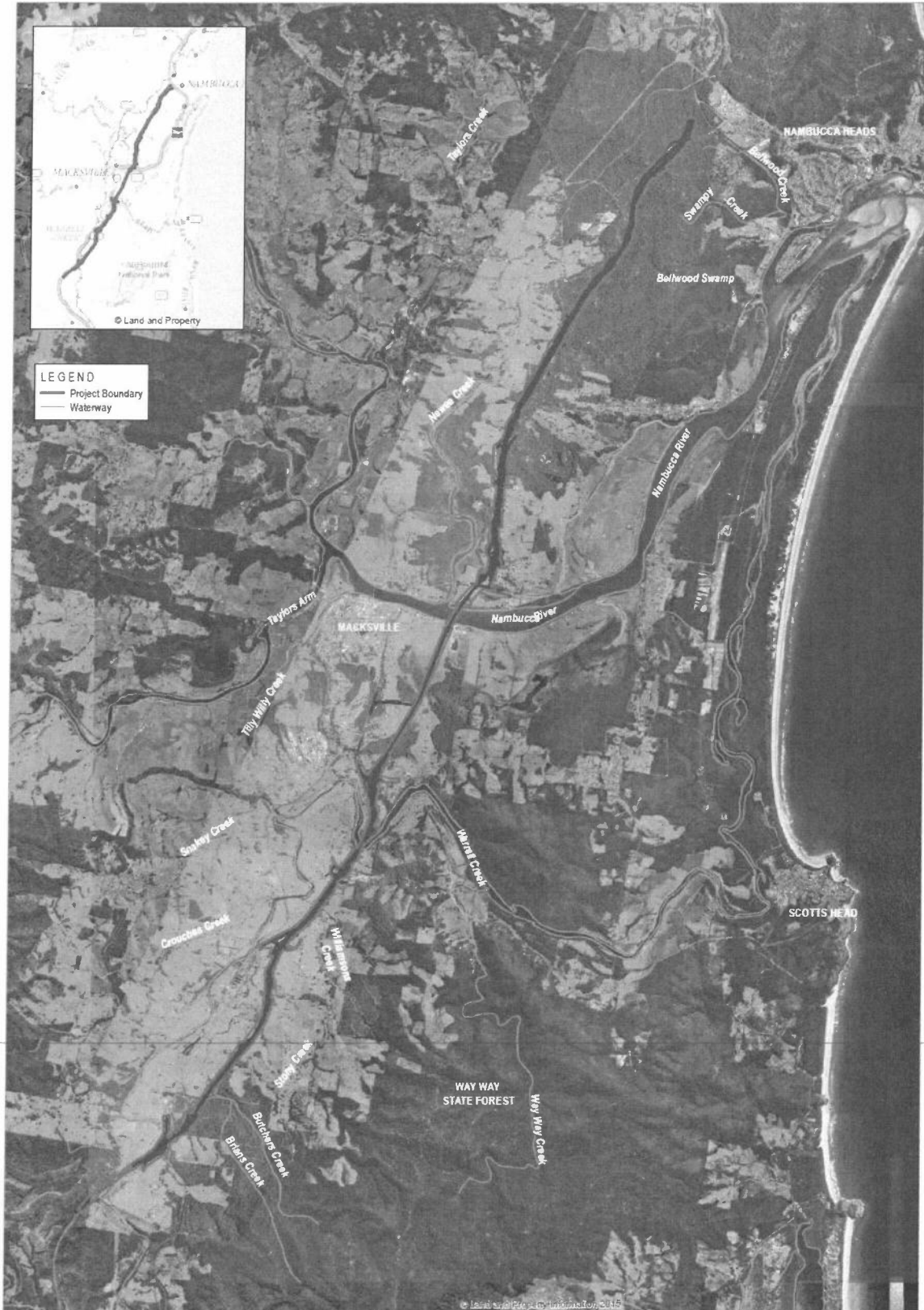
**Grey-headed Flying-fox habitat** means foraging habitat consisting of: Blackbutt Open Forest – 75.2 ha, Mixed Floodplain Forest – 4.0 ha, White Mahogany/Grey Gum/Ironbark Moist Open Forest – 7.3 ha, Flooded Gum Moist Open Forest – 14.8 ha and Swamp Mahogany/Paperbark Swamp Forest – 5.3 ha (inclusive of 3.1 ha of roosting habitat).

**Spotted-tail Quoll habitat** means Blackbutt Open Forest – 75.2 ha, Mixed Floodplain Forest 4.0 ha, White Mahogany/Grey Gum/Ironbark Moist Open Forest – 7.3 ha, Flooded Gum Moist Open Forest – 14.8 ha, Swamp Mahogany/Paperbark Swamp Forest – 5.3 ha, Swamp Forest/Swamp Oak – 0.4 ha, Freshwater Wetlands – 3.4 ha, Mangrove Forest – 0.1 ha and Hardwood plantation – 3.6 ha.

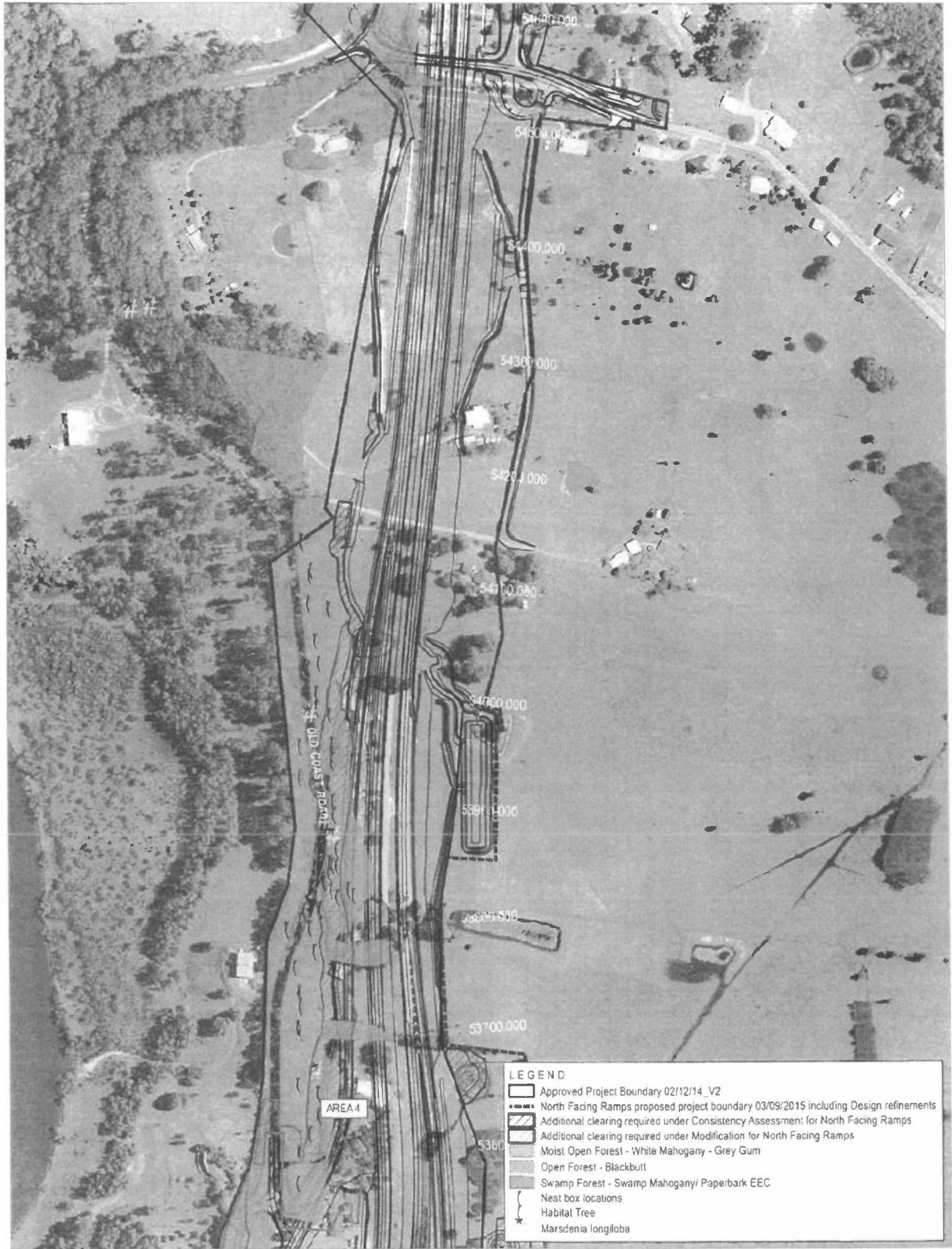
**Koala management Plan** means Version 10 of the Plan submitted to the Department on 14 September 2016, or a subsequent plan only if approved by the **Department**, which must have a benefit to the species.

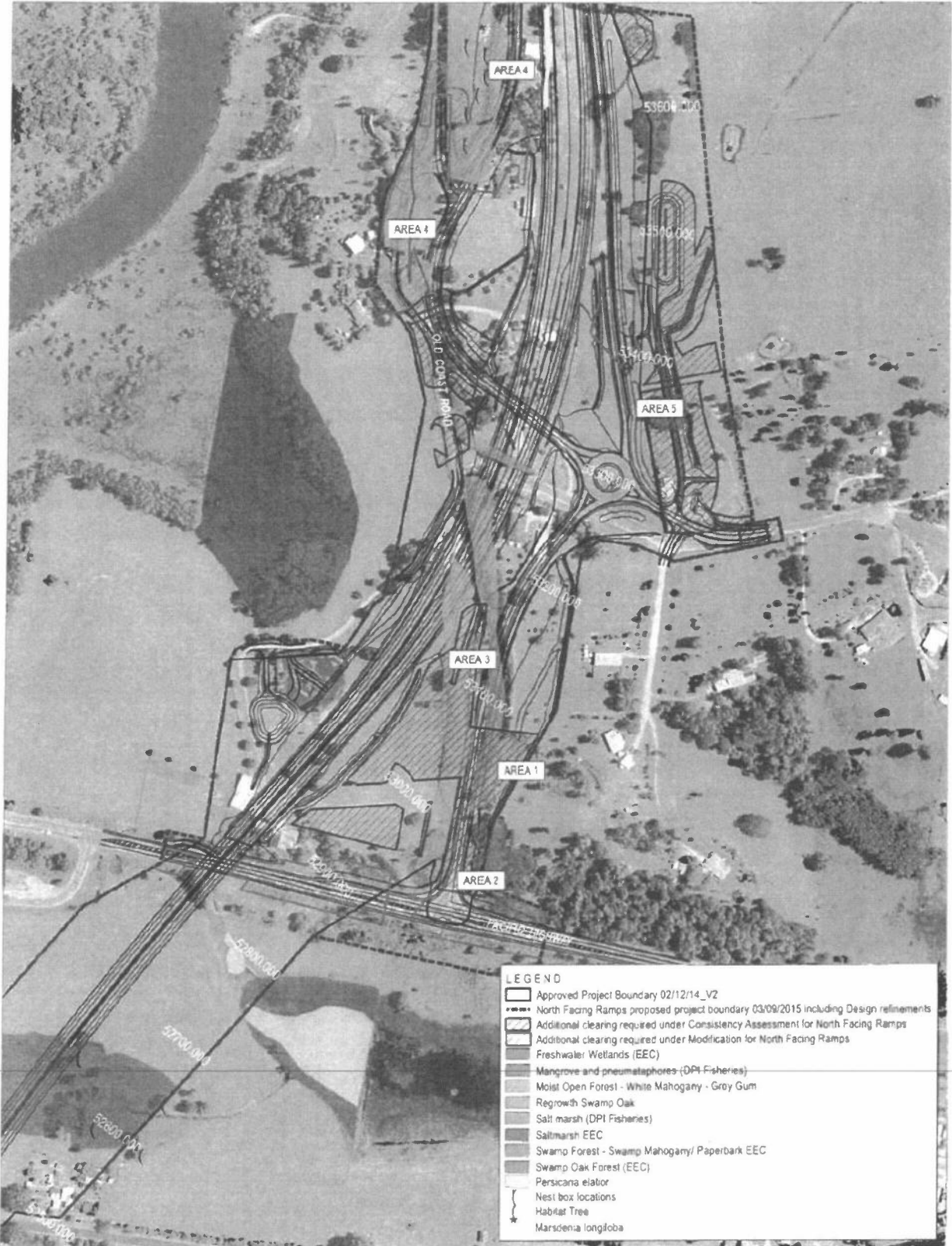
**Spotted-tail Quoll Management Plan** means Version 10 of the Plan submitted to the Department on 14 September 2016, or a subsequent plan only if approved by the **Department**, which must have a benefit to the species.

Appendix 1



Information shown is for illustrative purposes only





Biodiversity Assessment - North Facing Ramps - Warrell Creek to  
Namburns Island Pacific Kinohau I Inuarua

### Ecological Constraints

Illustration

