



Pacific Highway Upgrade: Warrell Creek to Nambucca Heads

APPENDIX J: Unexpected Threatened Species/EEC /
MNES Procedure
WC2NH-EN-FF-PRO_J Unexpected Threatened
Species/EEC /MNES Rev 0

Contents

Details of Revision Amendments	2
Terms and Abbreviations	3
Definitions	5
1. Introduction	6
1.1. Project Background	6
2. Purpose	6
3. Scope	6
4. Procedure	6

Terms and Abbreviations

AADJV	Arup and Aurecon Design Joint Venture
ACCIONA	ACCIONA Infrastructure Australia Pty Ltd
AFJV	ACCIONA and Ferrovial Joint Venture
AS/NZS	Australian and New Zealand Standard
ASM	Acid Sulfate Materials
ASMMP	Acid Sulfate Materials Management Plan
CEMP	Construction Environmental Management Plan
D&C	Design and Construction
DJV	Design Joint Venture
DoE	Department of Environment (Commonwealth)
EEC	Endangered Ecological Communities
EDMS	Electronic Document Management System (TeamBinder)
ENM	Excavated Natural Materials
EO	Environmental Officer
EPBC	Environmental Protection and Biodiversity Conservation
EPRM	Excavated public road material
EWMS	Environmental Works Method Statement
Ferrovial	Ferrovial Agroman (Australia) Pty Ltd
IMS	Integrated Management System
ISO	International Standards Organisation
KPI	Key Performance Indicator
MCoA	Minister’s Conditions of Approval
MNES	Matters of National Environmental Significance
NSW	New South Wales
O&M	Operations and Maintenance
PCBU	Person Conducting a Business or Undertaking
PMT	Project Management Team
PV	Project Verifier
RMS	Roads and Maritime Services



FFMP	Flora and Fauna Management Sub-plan (CEMP Appendix B2 Flora and Fauna Management Sub Plan)
VENM	Virgin Excavated Natural Materials
WC2NH	Warrell Creek to Nambucca Heads (the Project)

Definitions

Client	An organisation inviting and receiving tenders and letting contracts. For the purposes of this project - Roads and Maritime Services
Contractor	An organisation that contracts with a client to carry out construction and related services. For the purposes of this Project - ACCIONA Ferrovial Joint Venture.
Deed	D&C Project Deed, IC-DC-C91-1, Pacific Highway Warrell Creek to Nambucca Heads
Design Joint Venture	Joint Venture consisting of Arup and Aurecon
Government Agency	NSW government department, authority, corporation or entity established by an Act of the NSW Parliament
Persons Conducting a Business or Undertaking	Is an employer, corporation, partnership, unincorporated association that has the primary duty of care for workplace health and safety - (AFJV and Contractors are a PCBU)
Principal Contractor	A person conducting a business or undertaking that commissions a construction project. For the purposes of this project - AFJV
Project	The design and construction of the upgrade to the Pacific Highway between Warrell Creek and Nambucca Heads
Project Verifier	For the purpose of the Project, this is Davis Langdon Australia Pty Ltd
Subcontractor	Organisation that contracts with a principal contractor as the client to carry out construction and related services
Supplier	Organisation that contracts with a client to provide a product and / or service.
TeamBinder	The project Electronic Document Management System software
Worker	Is anyone who carries out work for a PCBU and includes: an employee, contractor or sub-contractor or an employee of, labour hire personnel, apprentice or trainee, work experience student

1. Introduction

The Warrell Creek to Nambucca Heads Pacific Highway Upgrade project (the WC2NH Project) is being designed and constructed in a joint venture consisting of ACCIONA Infrastructures Pty Ltd (ACCIONA) and Ferrovial Agroman (Australia) Pty Ltd (Ferrovial) trading as Pacifico – Acciona Ferrovial JV (Herein known as AFJV), in liaison with various other pre-qualified construction contractors, with overall project management and site supervision of the project by Roads and Maritime Services (RMS).

1.1. Project Background

The WC2NH project consists of the detailed design and construction of 19.6 km of new dual carriageway road on the Pacific Highway between the northern end of the existing Allgomera Deviation south of Warrell Creek and the southern end of the Nambucca Heads to Urunga Pacific Highway upgrade project west of Nambucca Heads. The project includes:

- 19.6 km of new divided dual carriageway;
- two grade separated interchanges at Warrell Creek and Bald Hill Road south of Macksville. Roads and Maritime is also investigating the provision of north facing ramps at North Macksville;
- longitudinal bridges across Upper Warrell Creek (including North Coast Railway Line), Williamson Creek, Warrell Creek, Nambucca River floodplain (2 of) and Nambucca River;
- overbridges on Rosewood Road, Albert Drive, Scotts Heads Quarry access road, Bald Hill Road, Old Coast Road South, Mattick Road and Old Coast Road North;
- an underpass at Cockburns Lane;
- local roads and drainage and fauna crossing structures; and
- associated infrastructure.

2. Purpose

This procedure details the actions to be taken when a threatened species / EEC / MNES is unexpectedly encountered during excavation / construction activities.

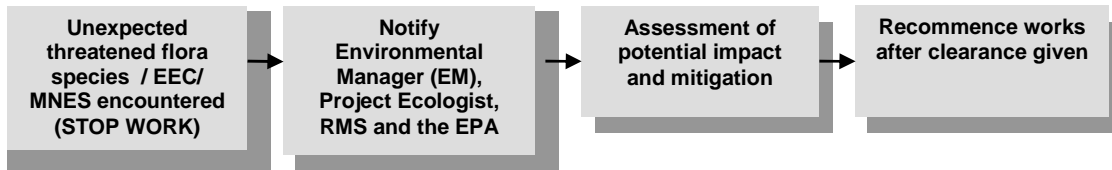
3. Induction/ training

Where required, personnel will be inducted on the identification of potential threatened species / EEC / MNES occurring on site and the relevant actions for them with regards to this procedure during the Project Induction, Site Inductions and regular Toolbox Talks.

4. Scope

This procedure is applicable to all activities conducted by personnel that have the potential to come into contact with threatened flora species. Where threatened fauna is unexpectedly encountered, refer to the **Fauna Handling and Rescue Procedure**.

WC2NH-EN-FF-PRO_J Appendix J Unexpected Threatened Species_EEC Finds Procedure Rev B	REV: 0
Uncontrolled Copy When Printed	Page 6 of 9



Refer to **Figure 5.1** for Unexpected Threatened Flora Species / EEC / MNES Find Procedure flow chart.

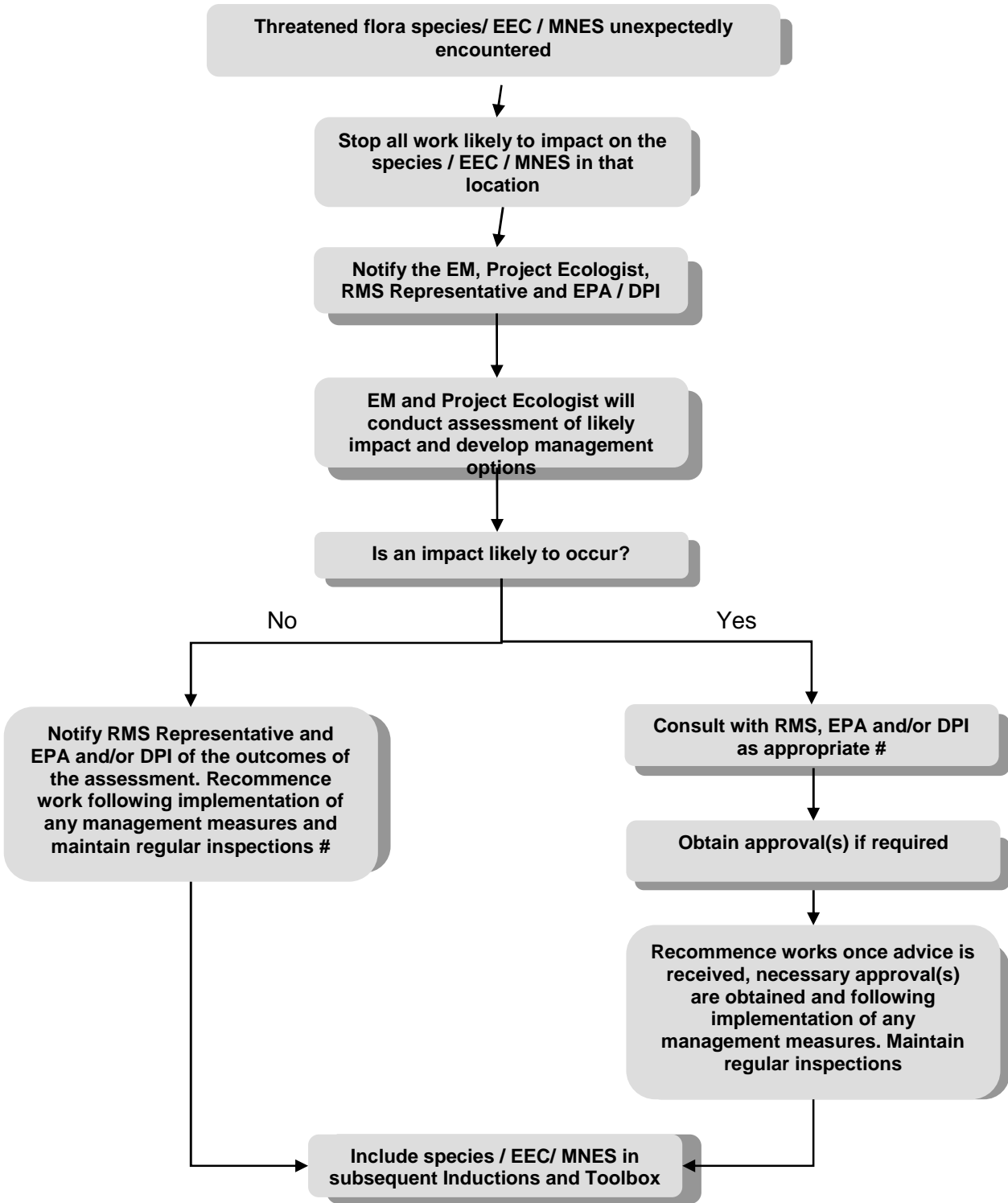
5. Procedure

1. Threatened flora species / EEC / MNES unexpectedly encountered during excavation/construction activities
<p>If a threatened flora species / EEC / MNES is unexpectedly encountered during excavation / construction activities:</p> <ul style="list-style-type: none"> • STOP ALL WORK in the vicinity of the find <p>Immediately notify the Environmental Manager (EM), or Environmental Officer (EO) who will notify the Project Ecologist, RMS and the EPA.</p>
2. Assessment of Impact
<p>An assessment is to be undertaken by the EM and the Project Ecologist to determine the likely impact to the threatened flora species / EEC / MNES and appropriate management options developed in consultation with RMS.</p> <p>If a significant impact is likely to occur, consultation will be undertaken with the EPA and / or DPI as appropriate. AFJV will discuss any changes to monitoring requirements and offsets with Roads and Maritime. The monitoring program and offset strategy will be updated if required and agreed with Roads and Maritime in consultation with the EPA, DPE and other relevant agencies.</p>
3. Approvals
<p>Obtain any relevant licences, permits or approvals required if the species / EEC is likely to be significantly impacted.</p>
4. Recommencement of Works
<p>Works will recommence once necessary advice has been sought and approval obtained if required. Include threatened flora species / EEC / MNES in subsequent Project Inductions and Toolbox Talks.</p>



Figure 5.1 Unexpected Threatened Flora Species / EEC / MNES Find Procedure Flow Chart

WC2NH-EN-FF-PRO_J Appendix J Unexpected Threatened Species_EEC Finds Procedure Rev B	REV: 0
Uncontrolled Copy When Printed	Page 8 of 9



Note: The Commonwealth Department of Sustainability, Environment, Water, Population and Communities is to be consulted if the flora species encountered is listed under the EPBC Act.