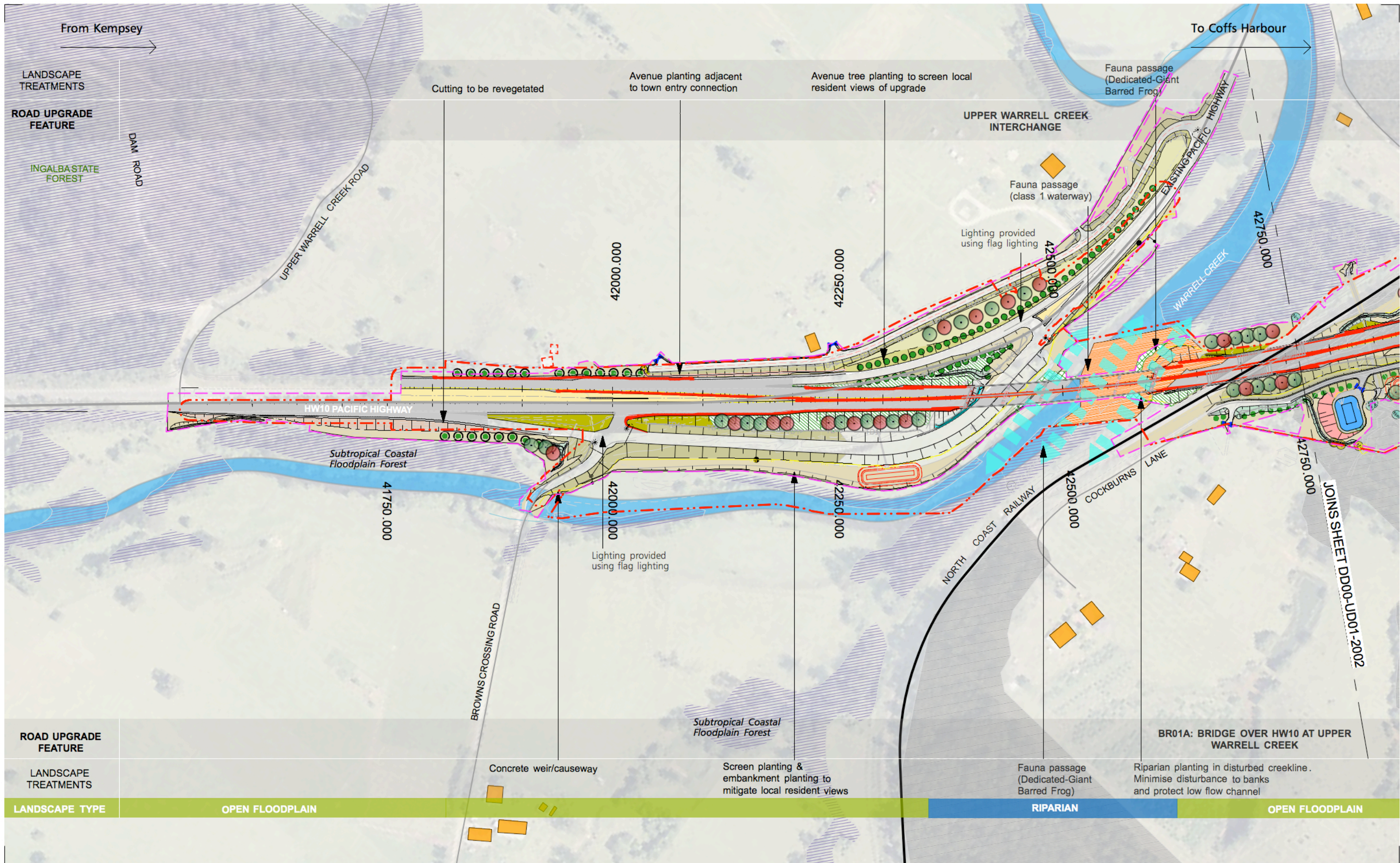


DRAWN
DRAW CHK
APPROVED



ROAD UPGRADE
FEATURE

LANDSCAPE
TREATMENTS

LANDSCAPE TYPE

OPEN FLOODPLAIN

RIPARIAN

OPEN FLOODPLAIN

BR01A: BRIDGE OVER HW10 AT UPPER
WARRELL CREEK

Concrete weir/causeway

Screen planting &
embankment planting to
mitigate local resident views

Fauna passage
(Dedicated-Giant
Barred Frog)

Riparian planting in disturbed creekline.
Minimise disturbance to banks
and protect low flow channel

URBAN DESIGN & LANDSCAPE BY:
SPACKMAN MOSSOP & MICHAELS



Note:
1. For Legends and Notes, Refer to Sheet No. WC2NH-DD00-UD01-0031
2. Refer to UDL Report WC2NH-DD00-UD01-RPT-0001 for detailed description

NOT FOR CONSTRUCTION

ISSUE	DATE	ISSUE / AMENDMENT DESCRIPTION
04	02-02-2016	For Planning
03	23-11-2015	For Planning
02	01-10-2015	For Information
01	28-07-2015	For Information

This sheet may be prepared using colour and may be incomplete if copied

SCALES	
0 40 80 120 160 200	
SCALE 1:4000m	
CO-ORDINATE SYSTEM:	MGA Zone 56
HEIGHT DATUM:	A.H.D.

URBAN DESIGN & LANDSCAPE BY: SPACKMAN MOSSOP & MICHAELS	
DESIGNED	C. HOUGHTON
REVIEWED	M. WRIGHT

ROADS AND MARITIME SERVICES	
NAMBUCCA SHIRE COUNCIL	
HW10 PACIFIC HIGHWAY UPGRADE	
WARRELL CREEK TO NAMBUCCA HEADS	
DD00 - URBAN DESIGN AND LANDSCAPE	
LANDSCAPE AND ENVIRONMENT PLAN 1 OF 14	

DRAWING WC2NH-DD00-UD01-DRG- 2001	STAGE FOR PLANNING	PART 1	ISSUE 04
REGISTRATION NUMBER DS2014/05111		SHEET No. DD00-UD01-2001	



NOT FOR CONSTRUCTION

DRAWING WC2NH-DD00-UD01-DRG- 2002	STAGE FOR PLANNING	PART 1	ISSUE 04
REGISTRATION NUMBER DS2014/05111		SHEET No. DD00-UD01-2002	

DRAWN
DRAW CHK
APPROVED

From Kempsey

To Coffs Harbour

LANDSCAPE
TREATMENT

Clustered trees and
grasses in floodplains

Construction buffer zone,
environmentally sensitive area

Screen planting to assist
with visual impact mitigation
for local residences

Cutting to be revegetated

Fauna culvert (incidental including
fish passage - class 3 waterway)
provide low flow channel through
rock scour protection

UPGRADE
FEATURE

ROSEWOOD CREEK

44250.000

44500.000

44750.000

45000.000

45250.000

45500.000

45500.000

JOINS SHEET DD00-UD01-2004

2002

2004

JOINS SHEET DD00-UD01-2002

UPGRADE
FEATURE

LANDSCAPE
TREATMENT

LANDSCAPE TYPE

Cutting to be revegetated

OPEN FLOODPLAIN

Fauna culvert (potential fish passage -
class 3 waterway) provide low flow
channel through scour rock protection

Fauna planting at
culvert outlets

BR03: BRIDGE OVER HW10 AT
ROSEWOOD ROAD

Avenue tree planting on
local road connections to
screen views from upgrade

Stoney Creek diversion revegetated
with riparian grasses and sedges

Riparian planting in disturbed creekline.
Minimise disturbance to creek banks
and protect low flow channel

RURAL RESIDENTIAL

STONEY CREEK

ROSEWOOD ROAD

Lowland Rainforest



Note:
1. For Legends and Notes, Refer to Sheet No. WC2NH-DD00-UD01-0031
2. Refer to UDL Report WC2NH-DD00-UD01-RPT-0001 for detailed description

NOT FOR CONSTRUCTION

URBAN DESIGN & LANDSCAPE BY:
SPACKMAN MOSSOP & MICHAELS



DESIGNED C. HOUGHTON

REVIEWED M. WRIGHT

ROADS AND MARITIME SERVICES

NAMBUCCA SHIRE COUNCIL
HW10 PACIFIC HIGHWAY UPGRADE
WARRELL CREEK TO NAMBUCCA HEADS
DD00 - URBAN DESIGN AND LANDSCAPE
LANDSCAPE AND ENVIRONMENT PLAN 3 OF 14

DRAWING
WC2NH-DD00-UD01-DRG- 2003

REGISTRATION NUMBER
DS2014/05111

STAGE
FOR PLANNING

PART
1

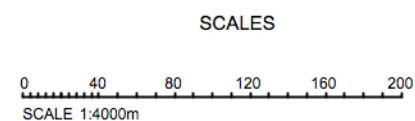
ISSUE
04

SHEET No.
DD00-UD01-2003

ISSUE	DATE	ISSUE / AMENDMENT DESCRIPTION
04	02-02-2016	For Planning
03	23-11-2015	For Planning
02	01-10-2015	For Information
01	28-07-2015	For Information

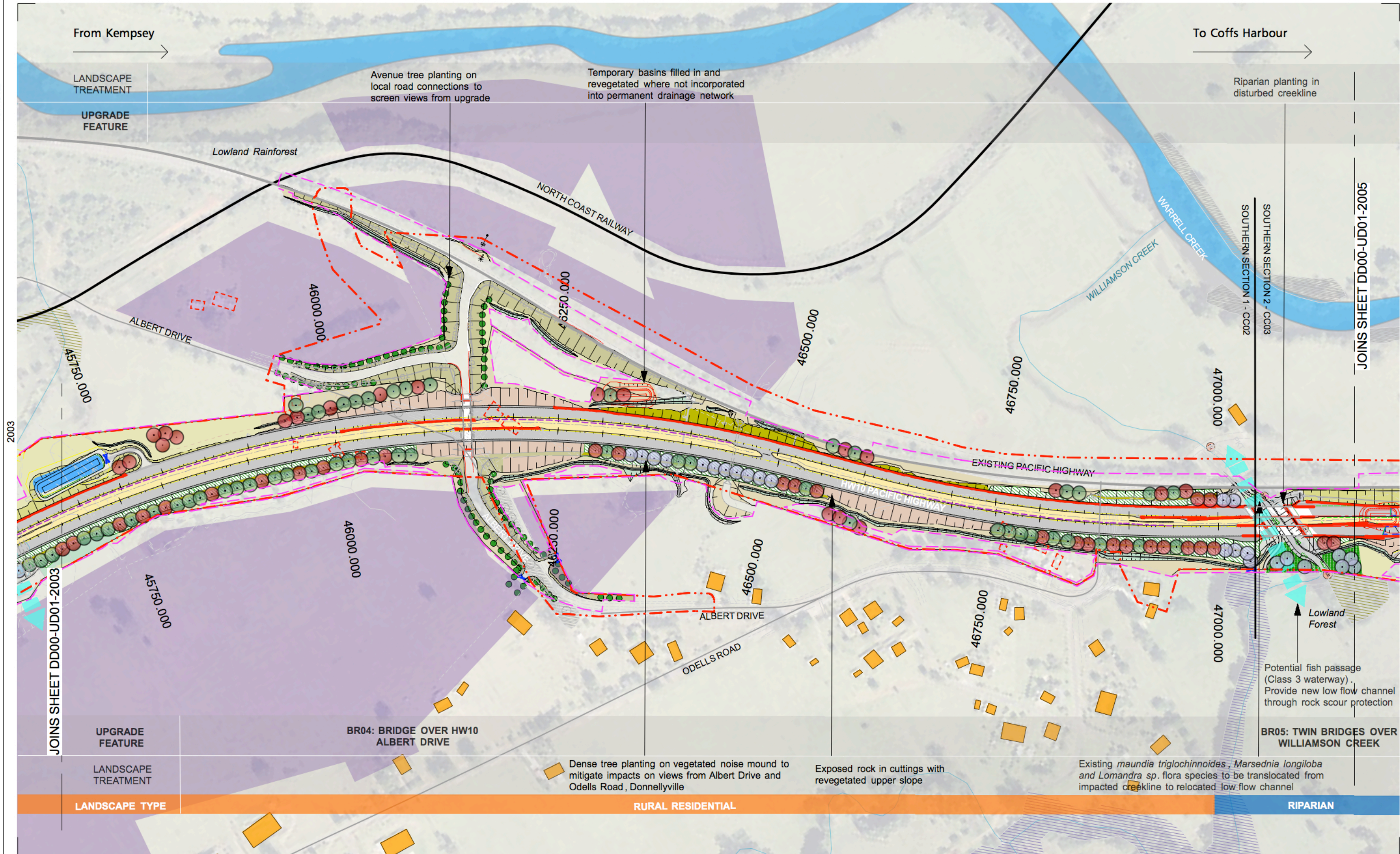
This sheet may be prepared using colour and may be incomplete if copied

CO-ORDINATE SYSTEM: MGA Zone 56 HEIGHT DATUM: A.H.D.



Date: 16-2-2
Time: 3:54:14 PM
File name: WC2NH-UL-DG-Master .vwx
10 15 110 115 120
A3 ORIGINAL
25mm ON ORIGINAL

DRAWN
DRAW CHK
APPROVED



URBAN DESIGN & LANDSCAPE BY:
SPACKMAN MOSSOP & MICHAELS



- Note:
1. For Legends and Notes, Refer to Sheet No. WC2NH-DD00-UD01-0031
 2. Refer to UDL Report WC2NH-DD00-UD01-RPT-0001 for detailed description

NOT FOR CONSTRUCTION

ISSUE	DATE	ISSUE / AMENDMENT DESCRIPTION
04	02-02-2016	For Planning
03	23-11-2015	For Planning
02	01-10-2015	For Information
01	28-07-2015	For Information

This sheet may be prepared using colour and may be incomplete if copied

SCALES	
0 40 80 120 160 200	
SCALE 1:4000m	
CO-ORDINATE SYSTEM:	MGA Zone 56
HEIGHT DATUM:	A.H.D.

URBAN DESIGN & LANDSCAPE BY: SPACKMAN MOSSOP & MICHAELS	
DESIGNED	C. HOUGHTON
REVIEWED	M. WRIGHT

ROADS AND MARITIME SERVICES	
NAMBUCCA SHIRE COUNCIL	
HW10 PACIFIC HIGHWAY UPGRADE	
WARRELL CREEK TO NAMBUCCA HEADS	
DD00 - URBAN DESIGN AND LANDSCAPE	
LANDSCAPE AND ENVIRONMENT PLAN 4 OF 14	

DRAWING WC2NH-DD00-UD01-DRG- 2004	STAGE FOR PLANNING	PART 1	ISSUE 04
REGISTRATION NUMBER DS2014/05111		SHEET No. DD00-UD01-2004	

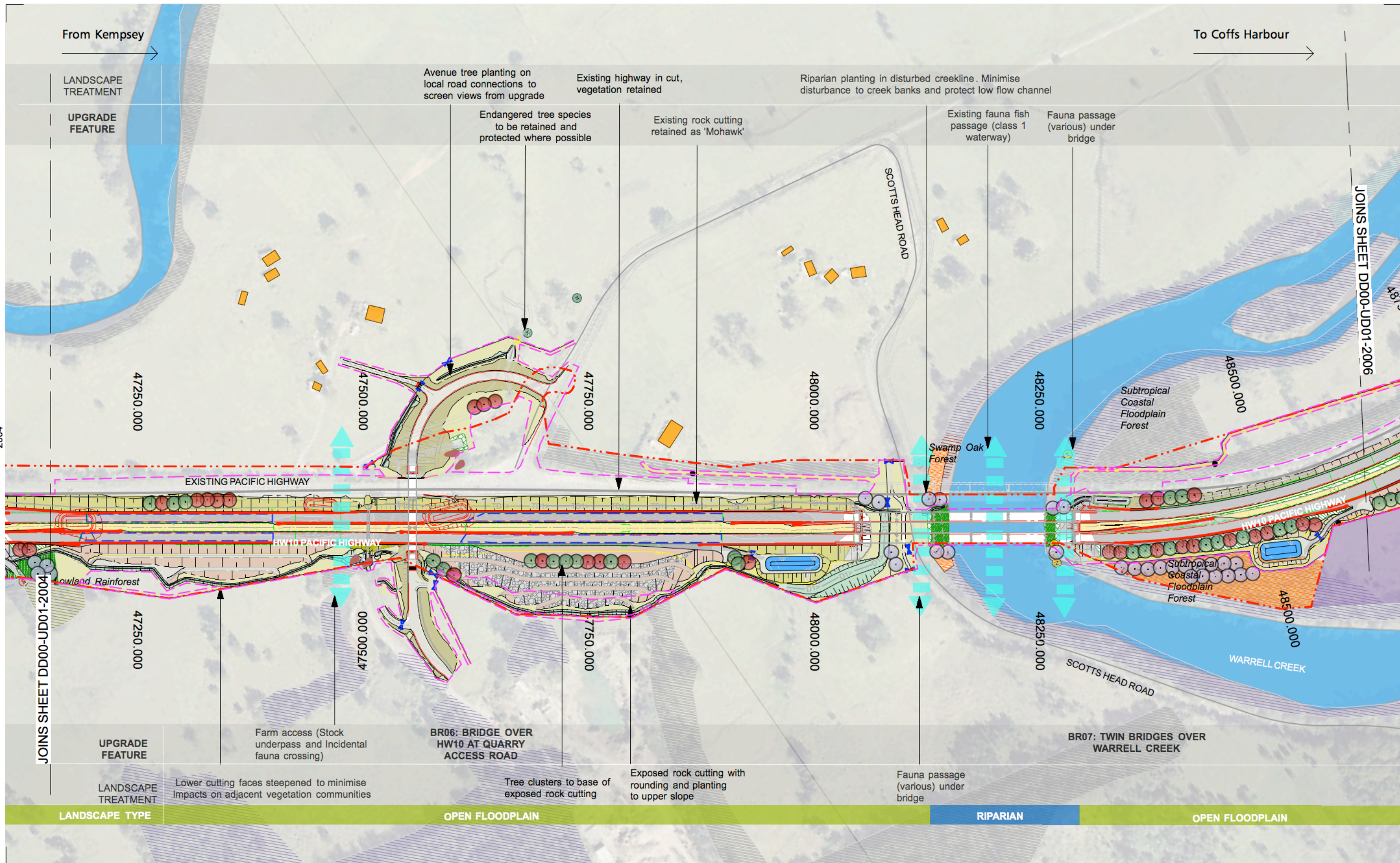
DRAWN
CHECKED
APPROVED

2004

JOINS SHEET DD00-UD01-2004

2004

JOINS SHEET DD00-UD01-2006



URBAN DESIGN & LANDSCAPE BY:
SPACKMAN MOSSOP & MICHAELS



Note:
1. For Legends and Notes, Refer to Sheet No. WC2NH-DD00-UD01-0031
2. Refer to UDL Report WC2NH-DD00-UD01-RPT-0001 for detailed description

NOT FOR CONSTRUCTION

ISSUE	DATE	ISSUE / AMENDMENT DESCRIPTION
04	02-02-2016	For Planning
03	23-11-2015	For Planning
02	01-10-2015	For Information
01	28-07-2015	For Information

This sheet may be prepared using colour and may be incomplete if copied

SCALES
0 40 80 120 160 200
SCALE 1:4000m
CO-ORDINATE SYSTEM: MGA Zone 56 HEIGHT DATUM: A.H.D.

DESIGNED <u>C. HOUGHTON</u>
REVIEWED <u>M. WRIGHT</u>

ROADS AND MARITIME SERVICES
NAMBUCCA SHIRE COUNCIL
HW10 PACIFIC HIGHWAY UPGRADE
WARRELL CREEK TO NAMBUCCA HEADS
DD00 - URBAN DESIGN AND LANDSCAPE
LANDSCAPE AND ENVIRONMENT PLAN 5 OF 14

DRAWING	STAGE	PART	ISSUE
WC2NH-DD00-UD01-DRG- 2005	FOR PLANNING	1	04
REGISTRATION NUMBER	SHEET No.		
DS2014/05111	DD00-UD01-2005		

DRAWN
DRAW CHK
APPROVED

2005

JOINS SHEET DD00-UD01-2005

From Kempsey

TO MACKSVILLE

To Coffs Harbour

LANDSCAPE
TREATMENT

Revegetation of temporary
basins with native grasses to
suit adjacent land use

Low feature planting on roundabouts

Screen planting to assist
with visual mitigation for
local residences

Farm access (Stock
underpass and incidental
fauna crossing)

Trees are located minimum 5m
from alignment where barrier
present

UPGRADE
FEATURE

Redundant road
pavement
revegetated

Advanced tree planting at
interchange in order to
mitigate visual impacts
and to emphasise town
entry

Existing EEC wetland and
vegetation to be protected and
retained. Fauna crossing
provisions in accordance with EA
requirements

Lighting provided using
aeroscreen luminaire to
reduce light spill

Fauna planting at culvert
outlets

Subtropical
Coastal
Floodplain
Forest

HW10 PACIFIC HIGHWAY

Flying Fox Habitat
Area

Swamp Schlerophyll
Floodplain Forest EEC

Tree planting at interchange to provide
screening and to landmark town entry to
Macksville

Lighting provided using
aeroscreen luminaire to reduce light spill

BR08: BRIDGE OVER HW10
AT BALD HILL ROAD

Avenue tree planting on
local road connections

Trees, shrubs and grasses corresponding
with adjacent vegetation communities

LANDSCAPE TYPES

RURAL RESIDENTIAL

WETLAND

JOINS SHEET DD00-UD01-2007

2007

URBAN DESIGN & LANDSCAPE BY:
SPACKMAN MOSSOP & MICHAELS



Note:
1. For Legends and Notes, Refer to Sheet No. WC2NH-DD00-UD01-0031
2. Refer to UDL Report WC2NH-DD00-UD01-RPT-0001 for detailed description

NOT FOR CONSTRUCTION



ROADS AND MARITIME SERVICES

NAMBUCCA SHIRE COUNCIL
HW10 PACIFIC HIGHWAY UPGRADE
WARRELL CREEK TO NAMBUCCA HEADS
DD00 - URBAN DESIGN AND LANDSCAPE
LANDSCAPE AND ENVIRONMENT PLAN 6 OF 14

DRAWING	STAGE	PART	ISSUE
WC2NH-DD00-UD01-DRG- 2006	FOR PLANNING	1	04
REGISTRATION NUMBER		SHEET No.	
DS2014/05111		DD00-UD01-2006	

ISSUE	DATE	ISSUE / AMENDMENT DESCRIPTION
04	02-02-2016	For Planning
03	23-11-2015	For Planning
02	01-10-2015	For Information
01	28-07-2015	For Information

This sheet may be prepared using colour and may be incomplete if copied

SCALES	
0 40 80 120 160 200	
SCALE 1:4000m	
CO-ORDINATE SYSTEM:	MGA Zone 56
HEIGHT DATUM:	A.H.D.

DESIGNED C. HOUGHTON
REVIEWED M. WRIGHT

Date: 16-2-2
Time: 3:55:05 PM
File name: WC2NH-UL-DG-Master .vwx

A3 ORIGINAL

10 15 110 115 120 25mm ON ORIGINAL

DRAWN
DRAW CHK
APPROVED

From Kempsey

To Coffs Harbour

LANDSCAPE
TREATMENT

Clustered trees and grasses in floodplains
to mitigate impact on views and maintain
floodplain character

UPGRADE
FEATURE

Fauna passage
under bridge
(incidental)

Mandatory Option 2: Temporary access road with
pasture grasses on embankment and verges.
Revegetated road surface on removal

Trees, shrubs and grasses
corresponding with adjacent
vegetation communities

Endangered tree species to be
retained and protected where
possible

Clustered trees and grasses in floodplains to
mitigate impacts on views and maintain floodplain
character

SEPP 14
Freshwater Wetlands

Swamp Schlerophyll
Floodplain Forest

SEPP 14
Freshwater Wetlands

Swamp Schlerophyll
Floodplain Forest

HW10 PACIFIC HIGHWAY

Freshwater wetlands EEC

Swamp Schlerophyll
Floodplain Forest EEC

Flying Fox Habitat Area

Riparian and habitat
planting beneath floodplain
bridges

Fauna passage under
bridge (incidental)

Riparian and habitat planting
beneath floodplain bridges

SEPP 14
Freshwater
Wetlands

Swamp Schlerophyll
Floodplain Forest

SEPP 14 Freshwater Wetlands

SEPP 14
Freshwater
Wetlands

UPGRADE
FEATURE

BR13: TWIN BRIDGES OVER NAMBUCCA
RIVER FLOODPLAIN 1

LANDSCAPE
TREATMENT

BR14: TWIN BRIDGES OVER NAMBUCCA
RIVER FLOODPLAIN 2

LANDSCAPE TYPES

WETLAND

OPEN FLOODPLAIN

WETLAND

OPEN FLOODPLAIN

URBAN DESIGN & LANDSCAPE BY:
SPACKMAN MOSSOP & MICHAELS



Note:
1. For Legends and Notes, Refer to Sheet No. WC2NH-DD00-UD01-0031
2. Refer to UDL Report WC2NH-DD00-UD01-RPT-0001 for detailed description

NOT FOR CONSTRUCTION



DESIGNED C. HOUGHTON

REVIEWED M. WRIGHT

ROADS AND MARITIME SERVICES

NAMBUCCA SHIRE COUNCIL
HW10 PACIFIC HIGHWAY UPGRADE
WARRELL CREEK TO NAMBUCCA HEADS
DD00 - URBAN DESIGN AND LANDSCAPE
LANDSCAPE AND ENVIRONMENT PLAN 7 OF 14

DRAWING
WC2NH-DD00-UD01-DRG- 2007

STAGE
FOR PLANNING

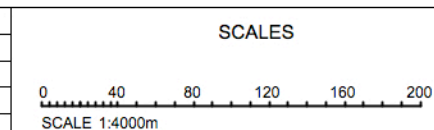
PART
1

ISSUE
04

REGISTRATION NUMBER
DS2014/05111

SHEET No.
DD00-UD01-2007

ISSUE	DATE	ISSUE / AMENDMENT DESCRIPTION
04	02-02-2016	For Planning
03	23-11-2015	For Planning
02	01-10-2015	For information
01	28-07-2015	For information



CO-ORDINATE SYSTEM: MGA Zone 56 HEIGHT DATUM: A.H.D.

This sheet may be prepared using colour and may be incomplete if copied

Date: 16-2-2

Time: 3:55:22 PM

File name: WC2NH-UL-DG-Master .vwx

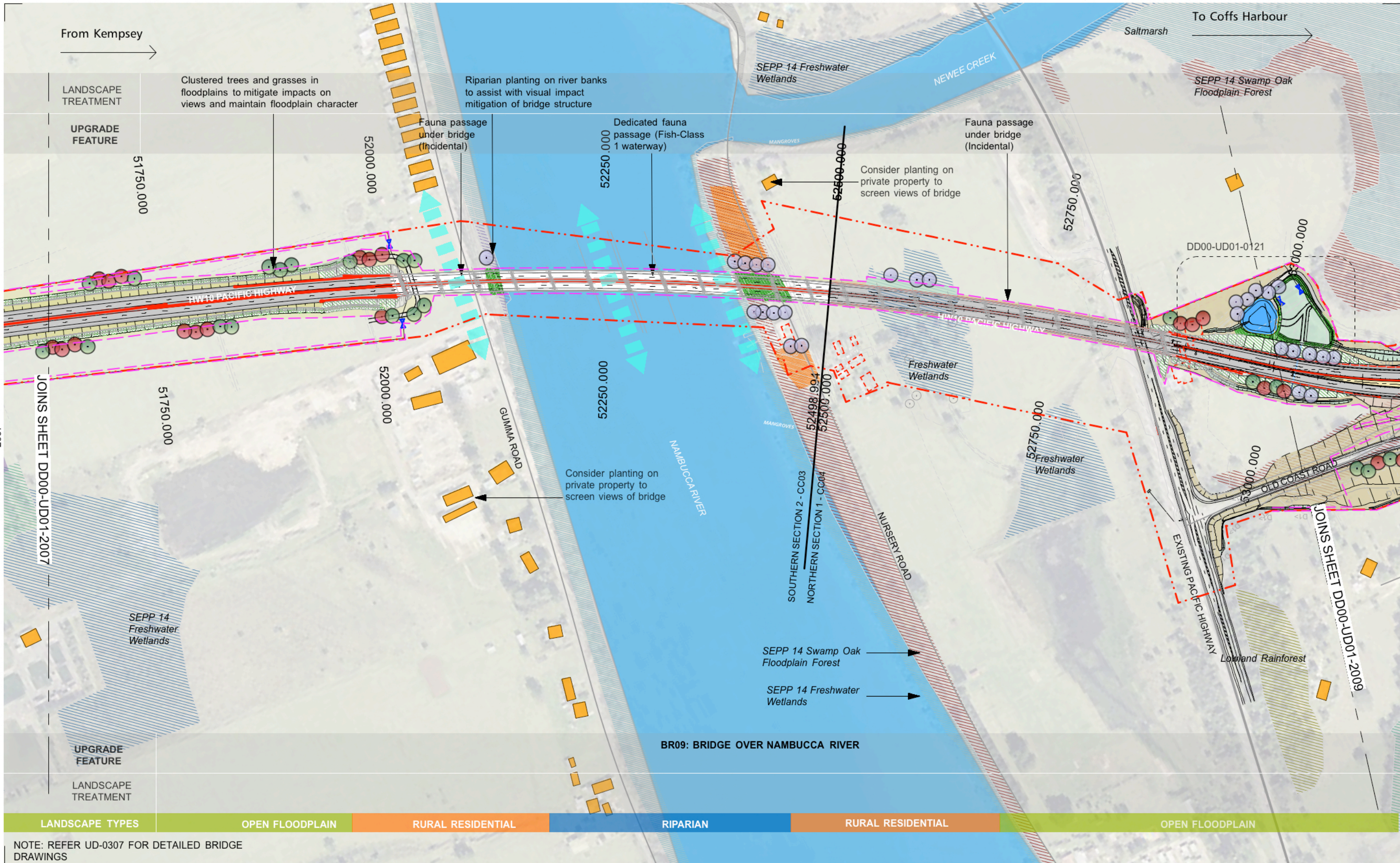
10 15 110 115 120 25mm ON ORIGINAL

A3 ORIGINAL

DRAWN
DRAW CHK
APPROVED

2007

2009



URBAN DESIGN & LANDSCAPE BY:
SPACKMAN MOSSOP & MICHAELS



Note:
1. For Legends and Notes, Refer to Sheet No. WC2NH-DD00-UD01-0031
2. Refer to UDL Report WC2NH-DD00-UD01-RPT-0001 for detailed description

NOT FOR CONSTRUCTION

ISSUE	DATE	ISSUE / AMENDMENT DESCRIPTION
05	20-06-2016	For Planning
04	02-02-2016	For Planning
03	23-11-2015	For Planning
02	01-10-2015	For Information
01	28-07-2015	For Information

This sheet may be prepared using colour and may be incomplete if copied

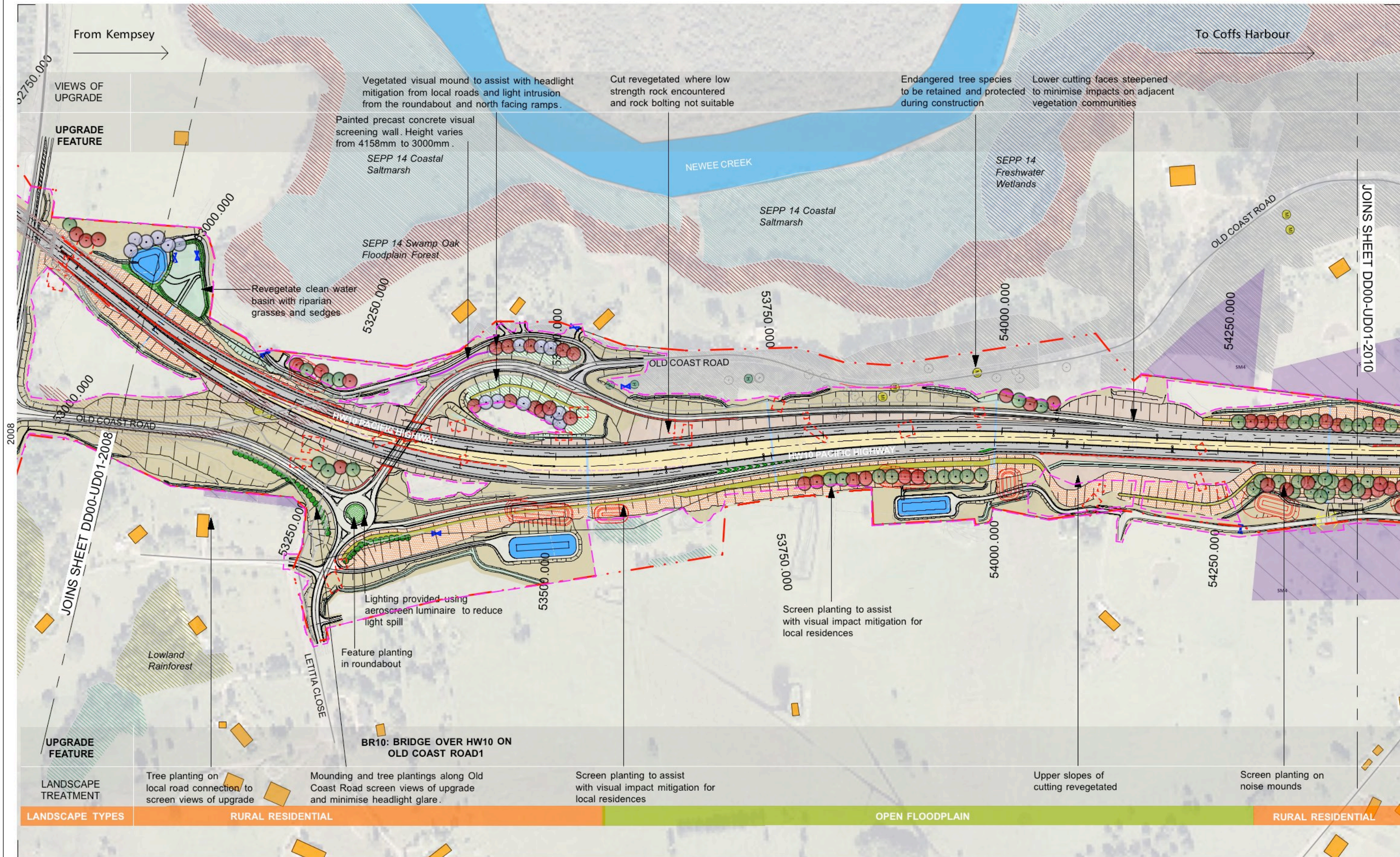
SCALES
0 40 80 120 160 200
SCALE 1:4000m
CO-ORDINATE SYSTEM: MGA Zone 56 HEIGHT DATUM: A.H.D.

AFJV
ARUP aurecon
DESIGNED C. HOUGHTON
REVIEWED M. WRIGHT

ROADS AND MARITIME SERVICES
NAMBUCCA SHIRE COUNCIL
HW10 PACIFIC HIGHWAY UPGRADE
WARRELL CREEK TO NAMBUCCA HEADS
DD00 - URBAN DESIGN AND LANDSCAPE
LANDSCAPE AND ENVIRONMENT PLAN 8 OF 14

DRAWING	STAGE	PART	ISSUE
WC2NH-DD00-UD01-DRG- 2008	FOR PLANNING	1	05
REGISTRATION NUMBER	SHEET No.		
DS2014/05111	DD00-UD01-2008		

DRAWN
DRAW CHK
APPROVED



JOINS SHEET DD00-UD01-2010

2010



Note:
1. For Legends and Notes, Refer to Sheet No. WC2NH-DD00-UD01-0031
2. Refer to UDL Report WC2NH-DD00-UD01-RPT-0001 for detailed description

NOT FOR CONSTRUCTION

URBAN DESIGN & LANDSCAPE BY:
SPACKMAN MOSSOP & MICHAELS



DESIGNED C. HOUGHTON
REVIEWED M. WRIGHT

ROADS AND MARITIME SERVICES

NAMBUCCA SHIRE COUNCIL
HW10 PACIFIC HIGHWAY UPGRADE
WARRELL CREEK TO NAMBUCCA HEADS
DD00 - URBAN DESIGN AND LANDSCAPE
LANDSCAPE AND ENVIRONMENT PLAN 9 OF 14

DRAWING	STAGE	PART	ISSUE
WC2NH-DD00-UD01-DRG- 2009	FOR PLANNING	1	10
REGISTRATIONNUMBER		SHEET No.	
DS2014/05111		DD00-UD01-2009	

ISSUE	DATE	ISSUE / AMENDMENT DESCRIPTION
10	26-06-2017	For Planning
09	13-04-2017	For Planning
08	03-04-2017	For Planning
07	30-01-2017	For Planning
06	30-08-2016	For Planning

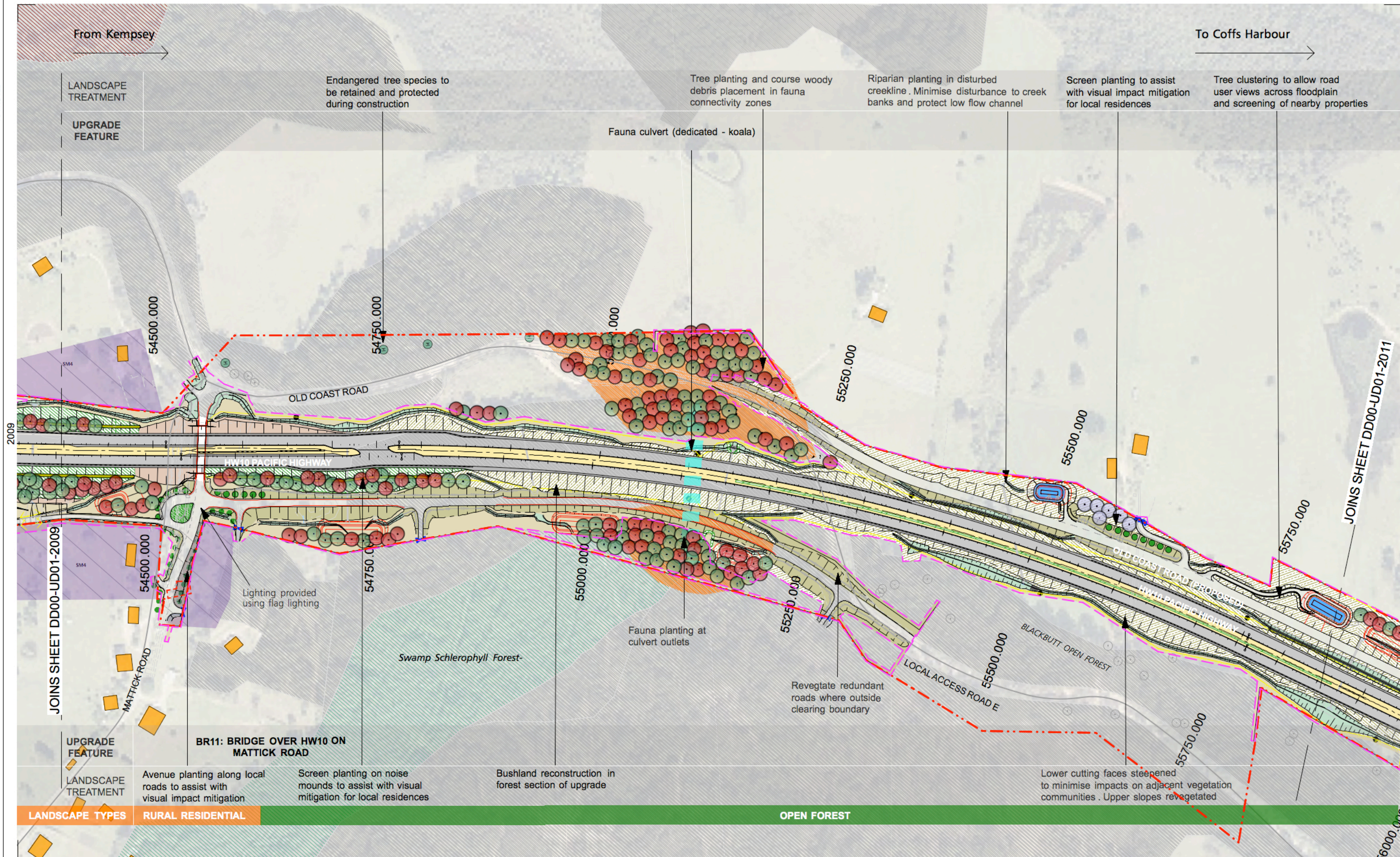
This sheet may be prepared using colour and may be incomplete if copied

SCALES	
0 40 80 120 160 200	
SCALE 1:4000m	
CO-ORDINATE SYSTEM: MGA Zone 56 HEIGHT DATUM: A.H.D.	

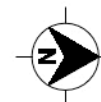
Date: 26/6/17
Time: 5:23:42 PM
File name: WC2NH-UL-DG-Master .vwx
25mm ON ORIGINAL

A3 ORIGINAL

DRAWN
DRAW CHK
APPROVED



URBAN DESIGN & LANDSCAPE BY:
SPACKMAN MOSSOP & MICHAELS



Note:
1. For Legends and Notes, Refer to Sheet No. WC2NH-DD00-UD01-0031
2. Refer to UDL Report WC2NH-DD00-UD01-RPT-0001 for detailed description

NOT FOR CONSTRUCTION

DESIGNED C. HOUGHTON
REVIEWED M. WRIGHT

ROADS AND MARITIME SERVICES

NAMBUCCA SHIRE COUNCIL
HW10 PACIFIC HIGHWAY UPGRADE
WARRELL CREEK TO NAMBUCCA HEADS
DD00 - URBAN DESIGN AND LANDSCAPE
LANDSCAPE AND ENVIRONMENT PLAN 10 OF 14

DRAWING WC2NH-DD00-UD01-DRG- 2010	STAGE FOR PLANNING	PART 1	ISSUE 04
REGISTRATION NUMBER DS2014/05111	SHEET No. DD00-UD01-2010		

ISSUE	DATE	ISSUE / AMENDMENT DESCRIPTION
04	02-02-2016	For Planning
03	23-11-2015	For Planning
02	01-10-2015	For Information
01	28-07-2015	For Information

This sheet may be prepared using colour and may be incomplete if copied

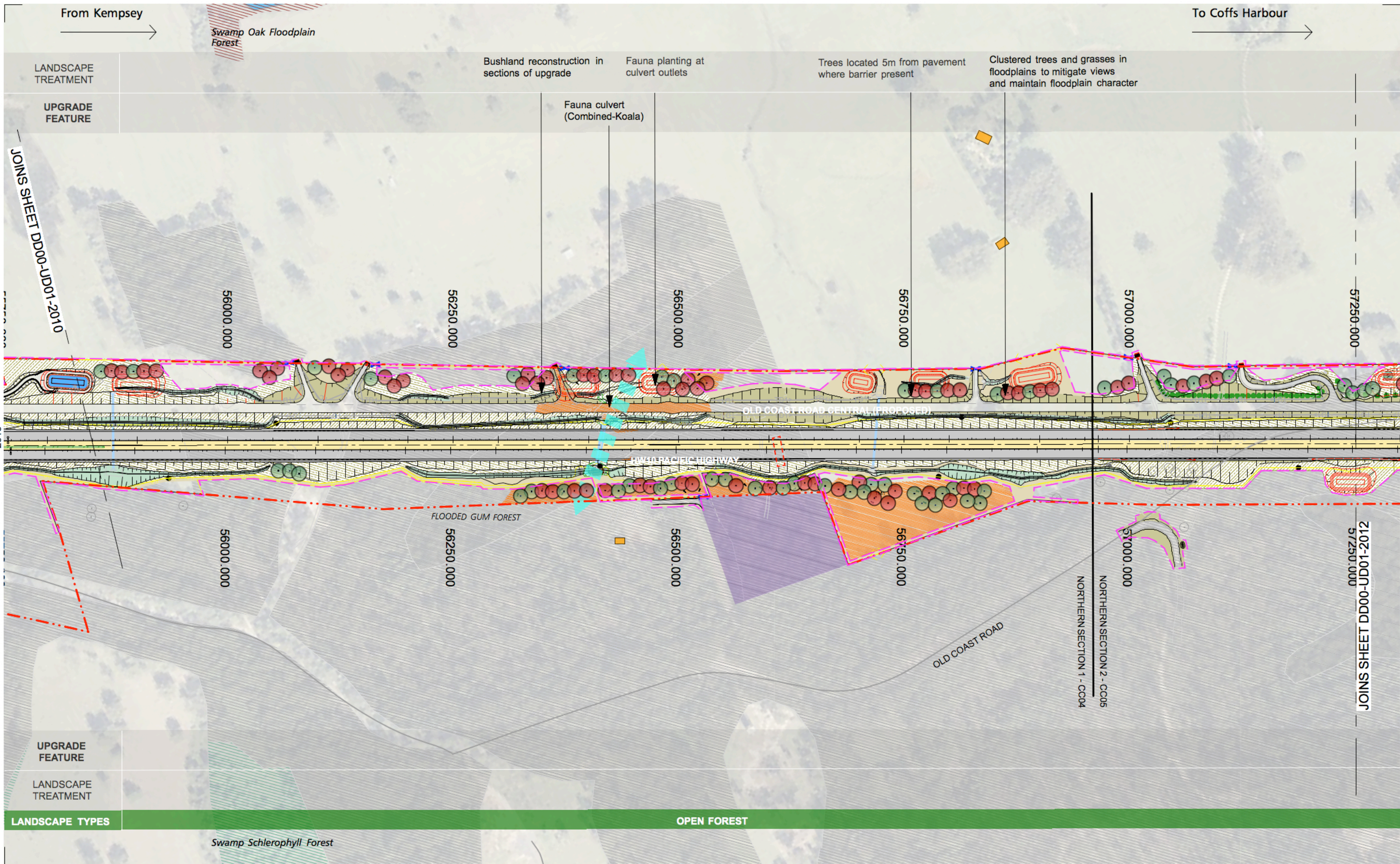
SCALES
0 40 80 120 160 200 SCALE 1:4000m
CO-ORDINATE SYSTEM: MGA Zone 56 HEIGHT DATUM: A.H.D.



Date: 16-2-2
Time: 3:56:01 PM
File name: WC2NH-UL-DG-Master .vwx
25mm ON ORIGINAL

A3 ORIGINAL

DRAWN
DRAWN CHK
APPROVED



URBAN DESIGN & LANDSCAPE BY:
SPACKMAN MOSSOP & MICHAELS



- Note:
1. For Legends and Notes, Refer to Sheet No. WC2NH-DD00-UD01-0031
 2. Refer to UDL Report WC2NH-DD00-UD01-RPT-0001 for detailed description

NOT FOR CONSTRUCTION

ISSUE	DATE	ISSUE / AMENDMENT DESCRIPTION
04	02-02-2016	For Planning
03	23-11-2015	For Planning
02	01-10-2015	For Information
01	28-07-2015	For Information

This sheet may be prepared using colour and may be incomplete if copied

SCALES	
0 40 80 120 160 200	
SCALE 1:4000m	
CO-ORDINATE SYSTEM:	MGA Zone 56
HEIGHT DATUM:	A.H.D.

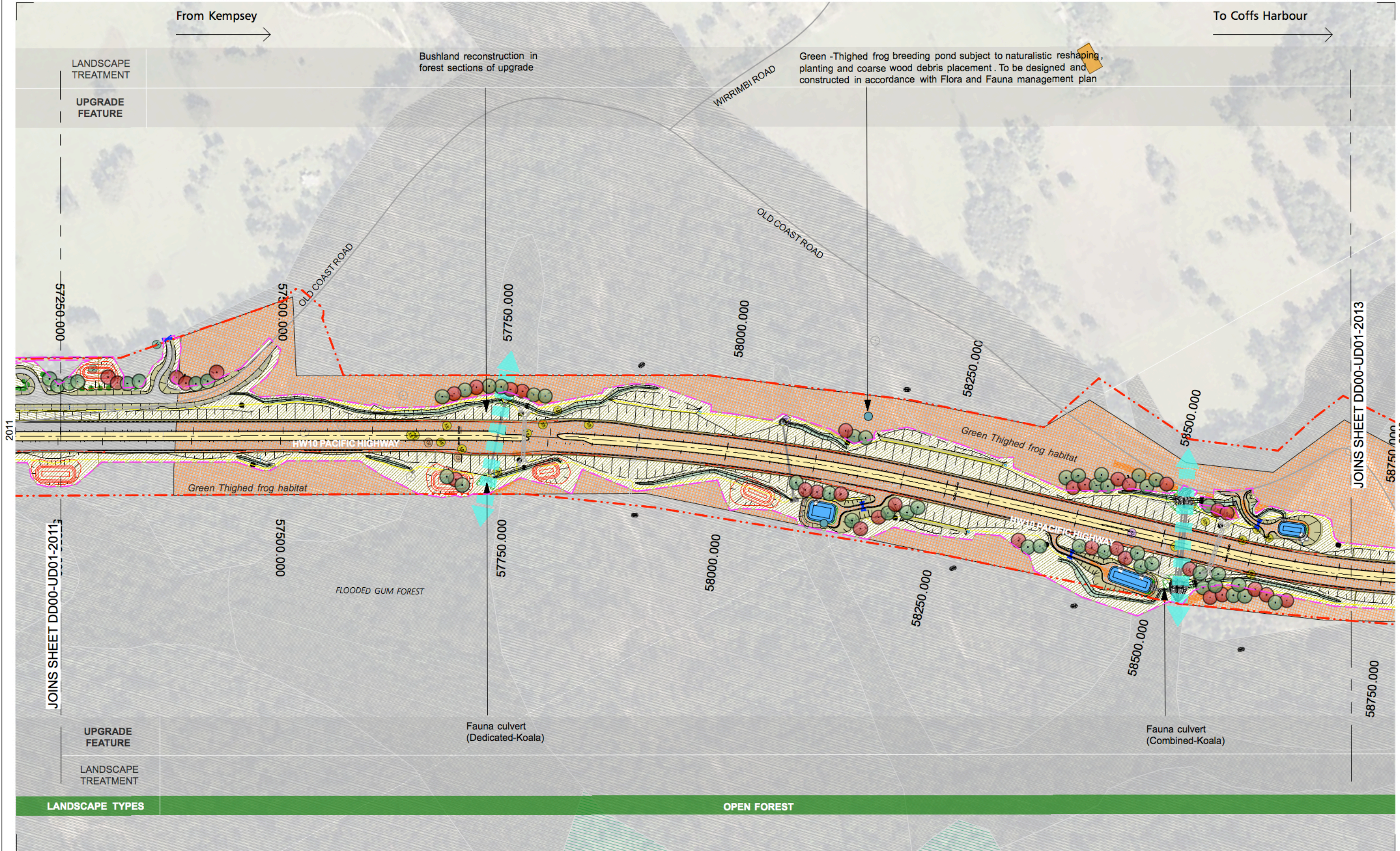
URBAN DESIGN & LANDSCAPE BY:	
SPACKMAN MOSSOP & MICHAELS	
AFJV	
ARUP aurecon	
DESIGNED	C. HOUGHTON
REVIEWED	M. WRIGHT

ROADS AND MARITIME SERVICES	
NAMBURCA SHIRE COUNCIL	
HW10 PACIFIC HIGHWAY UPGRADE	
WARRELL CREEK TO NAMBURCA HEADS	
DD00 - URBAN DESIGN AND LANDSCAPE	
LANDSCAPE AND ENVIRONMENT PLAN 11 OF 14	

DRAWING	STAGE	PART	ISSUE
WC2NH-DD00-UD01-DRG- 2011	FOR PLANNING	1	04
REGISTRATION NUMBER		SHEET No.	
DS2014/05111		DD00-UD01-2011	

DRAWN
DRAWN CHK
APPROVED

Date: 16-2-2
Time: 3:56:36 PM
File name: WC2NH-UL-DG-Master .vwx
25mm ON ORIGINAL



URBAN DESIGN & LANDSCAPE BY:
SPACKMAN MOSSOP & MICHAELS



Note:
1. For Legends and Notes, Refer to Sheet No. WC2NH-DD00-UD01-0031
2. Refer to UDL Report WC2NH-DD00-UD01-RPT-0001 for detailed description

NOT FOR CONSTRUCTION

ISSUE	DATE	ISSUE / AMENDMENT DESCRIPTION
04	02-02-2016	For Planning
03	23-11-2015	For Planning
02	01-10-2015	For information
01	28-07-2015	For information

This sheet may be prepared using colour and may be incomplete if copied

SCALES
0 40 80 120 160 200
SCALE 1:4000m
CO-ORDINATE SYSTEM: MGA Zone 56 HEIGHT DATUM: A.H.D.

AFJV
ARUP aurecon
DESIGNED C. HOUGHTON
REVIEWED M. WRIGHT

ROADS AND MARITIME SERVICES
NAMBUCCA SHIRE COUNCIL
HW10 PACIFIC HIGHWAY UPGRADE
WARRELL CREEK TO NAMBUCCA HEADS
DD00 - URBAN DESIGN AND LANDSCAPE
LANDSCAPE AND ENVIRONMENT PLAN 12 OF 14

DRAWING	STAGE	PART	ISSUE
WC2NH-DD00-UD01-DRG- 2012	FOR PLANNING	1	04
REGISTRATION NUMBER	SHEET No.		
DS2014/05111	DD00-UD01-2012		

DRAWN
CHECK
APPROVED

From Kempsey

To Coffs Harbour

LANDSCAPE
TREATMENT

Bushland reconstruction in
forest sections of upgrade

Retain existing vegetation
widened medians

UPGRADE
FEATURE

Aerial Fauna
Passage
(Glider Poles)

Aerial Fauna
Passage
(Glider Poles)

WASTE RECYCLING DEPOT

BLACKBUTT OPEN FOREST

OLD COAST ROAD

FLOODED GUM FOREST

BLACKBUTT OPEN FOREST

59250.000

59750.000

60000.000

2012

JOINS SHEET DD00-UD01-2012

58750.000

59000.000

59500.000

59750.000

60000.000

JOINS SHEET DD00-UD01-2014

60250.000

2014

UPGRADE
FEATURE

Fauna culvert
(Dedicated-Koala)

Fauna culvert
(Dedicated-Koala)

LANDSCAPE
TREATMENT

Lower cutting faces steepened to
minimise impacts on adjacent vegetation
communities. Upper slopes revegetated

LANDSCAPE TYPES

OPEN FOREST

URBAN DESIGN & LANDSCAPE BY:
SPACKMAN MOSSOP & MICHAELS



Note:
1. For Legends and Notes, Refer to Sheet No. WC2NH-DD00-UD01-0031
2. Refer to UDL Report WC2NH-DD00-UD01-RPT-0001 for detailed description

NOT FOR CONSTRUCTION



ROADS AND MARITIME SERVICES

NAMBUCCA SHIRE COUNCIL
HW10 PACIFIC HIGHWAY UPGRADE
WARRELL CREEK TO NAMBUCCA HEADS
DD00 - URBAN DESIGN AND LANDSCAPE
LANDSCAPE AND ENVIRONMENT PLAN 13 OF 14

DRAWING WC2NH-DD00-UD01-DRG- 2013	STAGE FOR PLANNING	PART 1	ISSUE 04
REGISTRATION NUMBER DS2014/05111		SHEET No. DD00-UD01-2013	

ISSUE	DATE	ISSUE / AMENDMENT DESCRIPTION
04	02-02-2016	For Planning
03	23-11-2015	For Planning
02	01-10-2015	For information
01	28-07-2015	For information

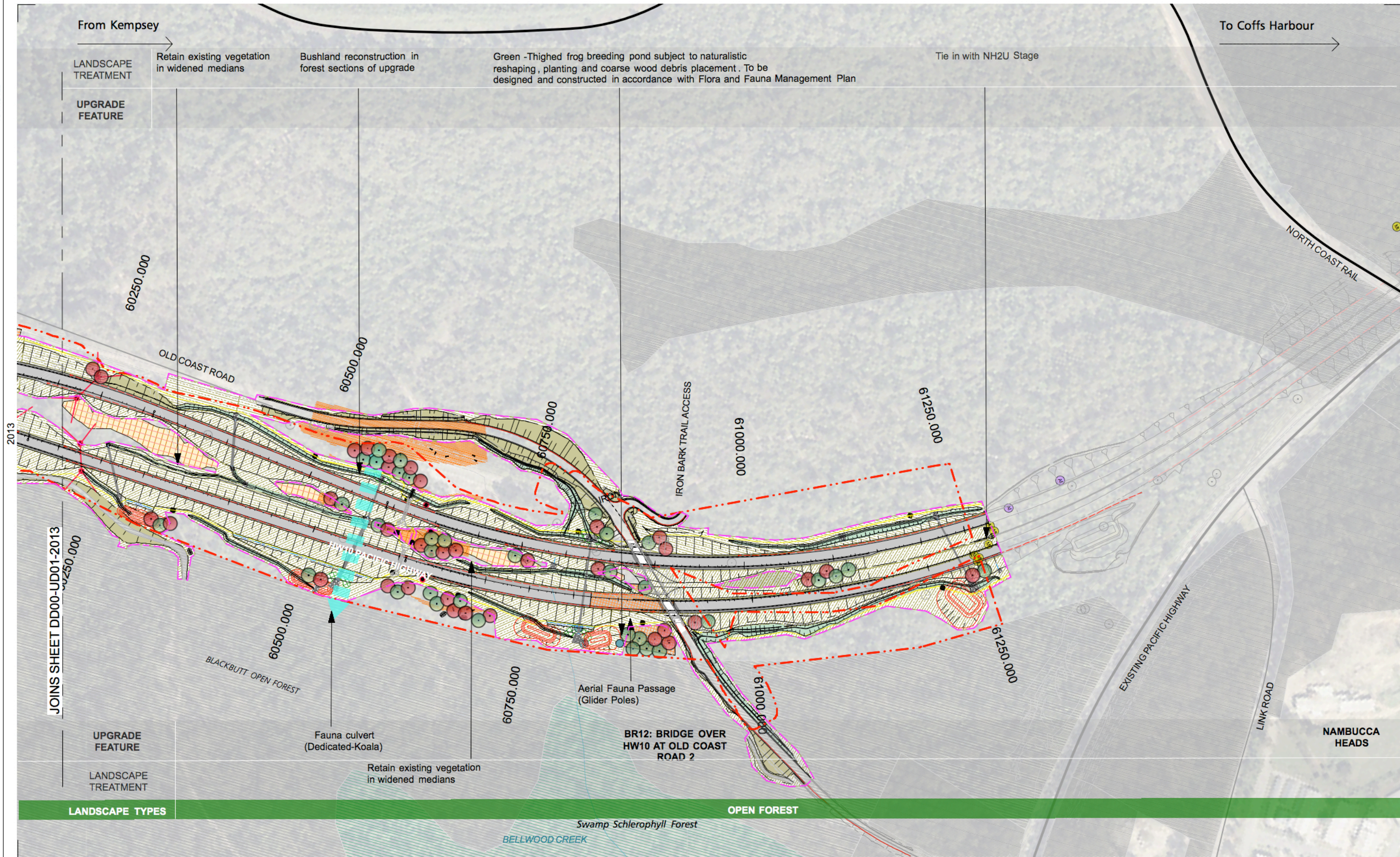
This sheet may be prepared using colour and may be incomplete if copied

SCALES	
0 40 80 120 160 200	
SCALE 1:4000m	
CO-ORDINATE SYSTEM: MGA Zone 56	HEIGHT DATUM: A.H.D.

DESIGNED C. HOUGHTON
REVIEWED M. WRIGHT

Date: 16-2-2
Time: 3:56:53 PM
File name: WC2NH-UL-DG-Master .vwx
A3 ORIGINAL
10 15 110 115 120 25mm ON ORIGINAL

DRAWN
DRAWN CHK
APPROVED



2013

JOINS SHEET DD00-UD01-2013

Date: 16-2-2
Time: 3:57:11 PM
File name: WC2NH-UL-DG-Master .vwx
25mm ON ORIGINAL

A3 ORIGINAL

ISSUE	DATE	ISSUE / AMENDMENT DESCRIPTION
04	02-02-2016	For Planning
03	23-11-2015	For Planning
02	01-10-2015	For information
01	28-07-2015	For information

SCALES	
0 40 80 120 160 200	
SCALE 1:4000m	
CO-ORDINATE SYSTEM: MGA Zone 56 HEIGHT DATUM: A.H.D.	

URBAN DESIGN & LANDSCAPE BY:
SPACKMAN MOSSOP & MICHAELS

AFJV	
ARUP aurecon	
DESIGNED	C. HOUGHTON
REVIEWED	M. WRIGHT



Note:
1. For Legends and Notes, Refer to Sheet No. WC2NH-DD00-UD01-0031
2. Refer to UDL Report WC2NH-DD00-UD01-RPT-0001 for detailed description

ROADS AND MARITIME SERVICES

NAMBUCCA SHIRE COUNCIL
HW10 PACIFIC HIGHWAY UPGRADE
WARRELL CREEK TO NAMBUCCA HEADS
DD00 - URBAN DESIGN AND LANDSCAPE
LANDSCAPE AND ENVIRONMENT 14 OF 14

NOT FOR CONSTRUCTION

DRAWING	STAGE	PART	ISSUE
WC2NH-DD00-UD01-DRG- 2014	FOR PLANNING	1	04
REGISTRATION NUMBER		SHEET No.	
DS2014/05111		DD00-UD01-2014	