

Attachment I - CLG Presentation



# Pacific Highway Wells Crossing to Iluka Road Upgrade

Maclean Community Liaison Group Meeting – 7 December 2004

Roads and Traffic Authority

# Agenda



- › Introductions
- › Commitment to consultation
- › The CLG process
- › Pacific Highway Upgrade Strategy
- › Background to the Project
- › Project team and Project overview
- › Community information sessions feedback
- › Brainstorming and ranking activity
- › Close

# Welcome and Introductions



- › Introduce project team members that are present
- › Introduce CLG members
  - » *name and where you live*
  - » *why you chose to become a member*
  - » *who you are representing and how*
  - » *any previous CLG experience*

# Wells Crossing to Iluka Road Upgrade



*Peter Black*

*Project Development Manager*

Pacific Highway Office, RTA

# Pacific Highway Upgrading Community Involvement



## Commitment to Consultation

# Pacific Highway Upgrading Successful Consultation



What is successful consultation?

- ✓ The community is involved early
- ✓ A cross section of the community are involved
- ✓ When consultation is one of many influencers in the process
- ✓ The community needs and issues are considered
- ✓ When communication is two-way

# Wells Crossing to Iluka Road Upgrade



*Tanyia Tuckey*

*Community Liaison Manager*

Sinclair Knight Merz

# Community Liaison Group Process



- › **The RTA Charter**
  - » **intent**
  - » **clarification**
  
- › **Your communication needs**



# Wells Crossing to Iluka Road Upgrade



*Peter Black*

*Project Development Manager*

Pacific Highway Office, RTA



Upgrading the Pacific Highway –

Key Date:

Preferred route and concept design by July 2006

# Why are we fast-tracking the Upgrading Program



Increasing pressure to accelerate completion of dual carriageway :

- » Road crashes involving fatalities still high
- » Increased travel demand from:
  - Rapid growth on the North Coast
  - Interstate traffic
- » Loss of amenity to local communities
  - Highway noise
  - Local/Through traffic interaction

# Overview of the Pacific Highway Upgrading Program



- › Planning for this project is being funded by the State Government as part of its \$1.6 billion contribution to the ten year upgrading program (\$2.2 billion total)
- › Future (Beyond 10 Year Program):
  - » State Government has given a commitment to continue upgrading
  - » Federal Government has recently released AusLink White Paper which :
    - » - maintains \$60 million/year for years 9 and 10 of the current program
    - increase contribution to \$160 million /year over the following 3 years

# Pacific Highway Upgrading Program Objectives



## Hexham to Queensland Border

- ✓ Significantly reduces road crashes and serious injuries
- ✓ Reduced travel times and delays
- ✓ Reduced freight transport costs
- ✓ A community satisfied with the physical development of the route
- ✓ A route that supports economic development
- ✓ Considers the environment
- ✓ Achieves value for money

# Wells Crossing to Iluka Road Specific Project Objectives



## *SIGNIFICANTLY REDUCES ROAD CRASHES AND SERIOUS INJURIES*

- ✓ Target crash rate of min 15 per 100MVK
- ✓ 110 km/h design speed
- ✓ Minimise access points
- ✓ Can be upgraded to a Freeway standard
- ✓ Retain or replace existing rest areas

# Wells Crossing to Iluka Road Specific Project Objectives



## *REDUCE TRAVEL TIMES AND DELAYS*

- ✓ Maximises reduction in travel time
- ✓ Intersections that function to a min Level of Service
- ✓ Minimise closures and delays from flooding
- ✓ Reduce delays from holiday congestion
- ✓ Minimise delay and disruption during construction

## Wells Crossing to Iluka Road Specific Project Objectives



### *REDUCED FREIGHT TRANSPORT COSTS*

- ✓ Reduces overall freight transport costs
- ✓ Meets or exceeds B-Double requirements



# Wells Crossing to Iluka Road Specific Project Objectives



## *A COMMUNITY SATISFIED WITH THE PHYSICAL DEVELOPMENT OF THE ROUTE*

- ✓ Meets the Criteria for Successful Projects
- ✓ Minimise traffic noise, intrusion, severance and access patterns
- ✓ Minimises impact on heritage
- ✓ Transport developments complimentary with land use
- ✓ Maintain access to properties during construction

# Wells Crossing to Iluka Road Specific Project Objectives



## *A ROUTE THAT SUPPORTS ECONOMIC DEVELOPMENT*

- ✓ Access for local industries to regional and state markets
- ✓ Access to local and regional centres of economic importance
- ✓ Minimises impact on business/service facilities
- ✓ Provide a level of flood immunity

# Wells Crossing to Iluka Road Specific Project Objectives



## *CONSIDERS THE ENVIRONMENT*

- ✓ Minimises the effects on sensitive habitats
- ✓ Minimises the effects on native vegetation
- ✓ Minimises impact on National Parks
- ✓ Satisfies the principles of Ecological Sustainable Development

# Wells Crossing to Iluka Road Specific Project Objectives



## *VALUE FOR MONEY*

- ✓ Minimises Whole of Life Costs
- ✓ Maximises the use of the existing road reserve where duplicated
- ✓ Benefit to Cost Ratio of greater than 2
- ✓ Supports NSW Government and Clarence Valley Council development policies

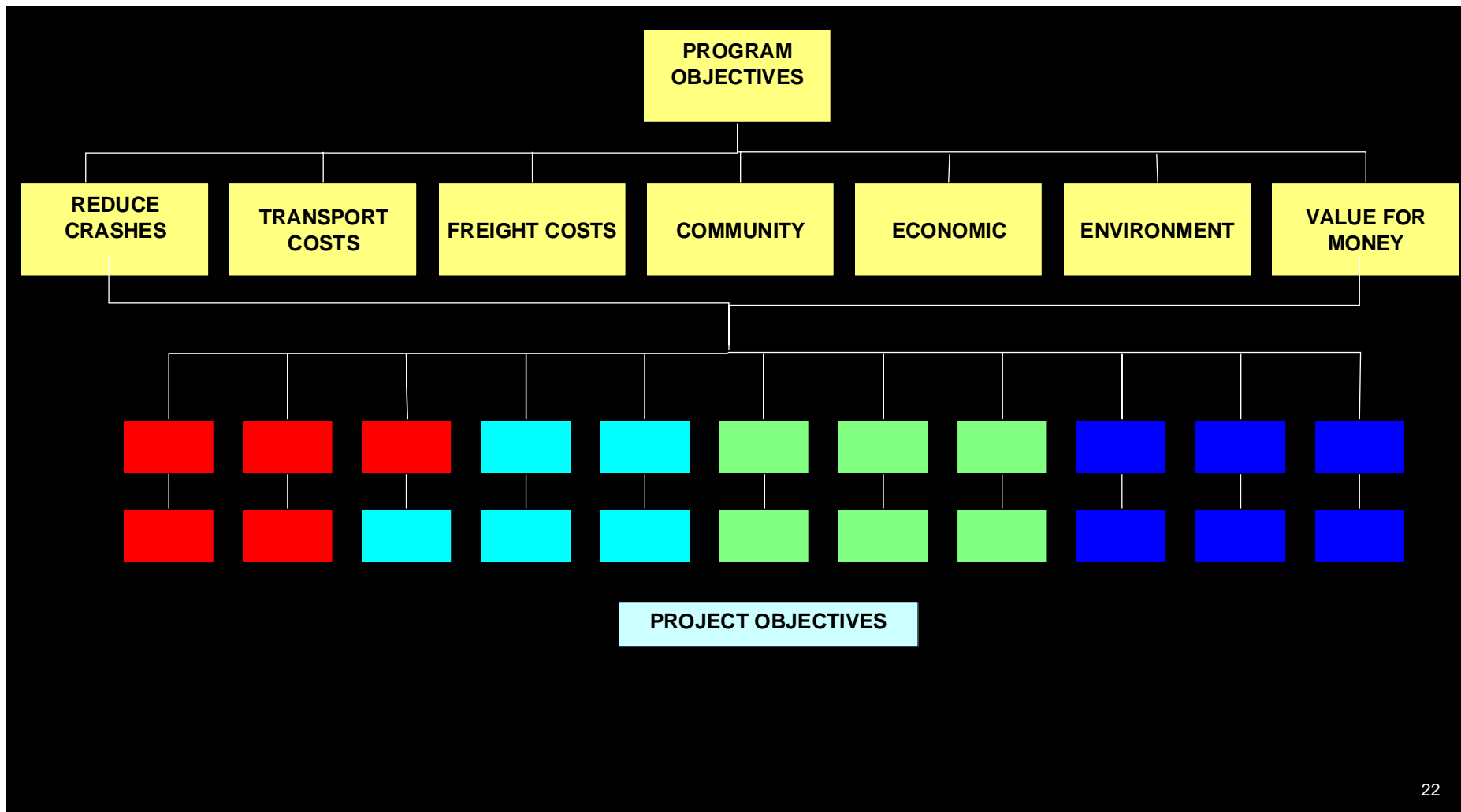
# Categorising Project Objectives



Project Objectives can be placed into four categories

- 1. Social**
- 2. Environmental**
- 3. Functional (Engineering)**
- 4. Economic**

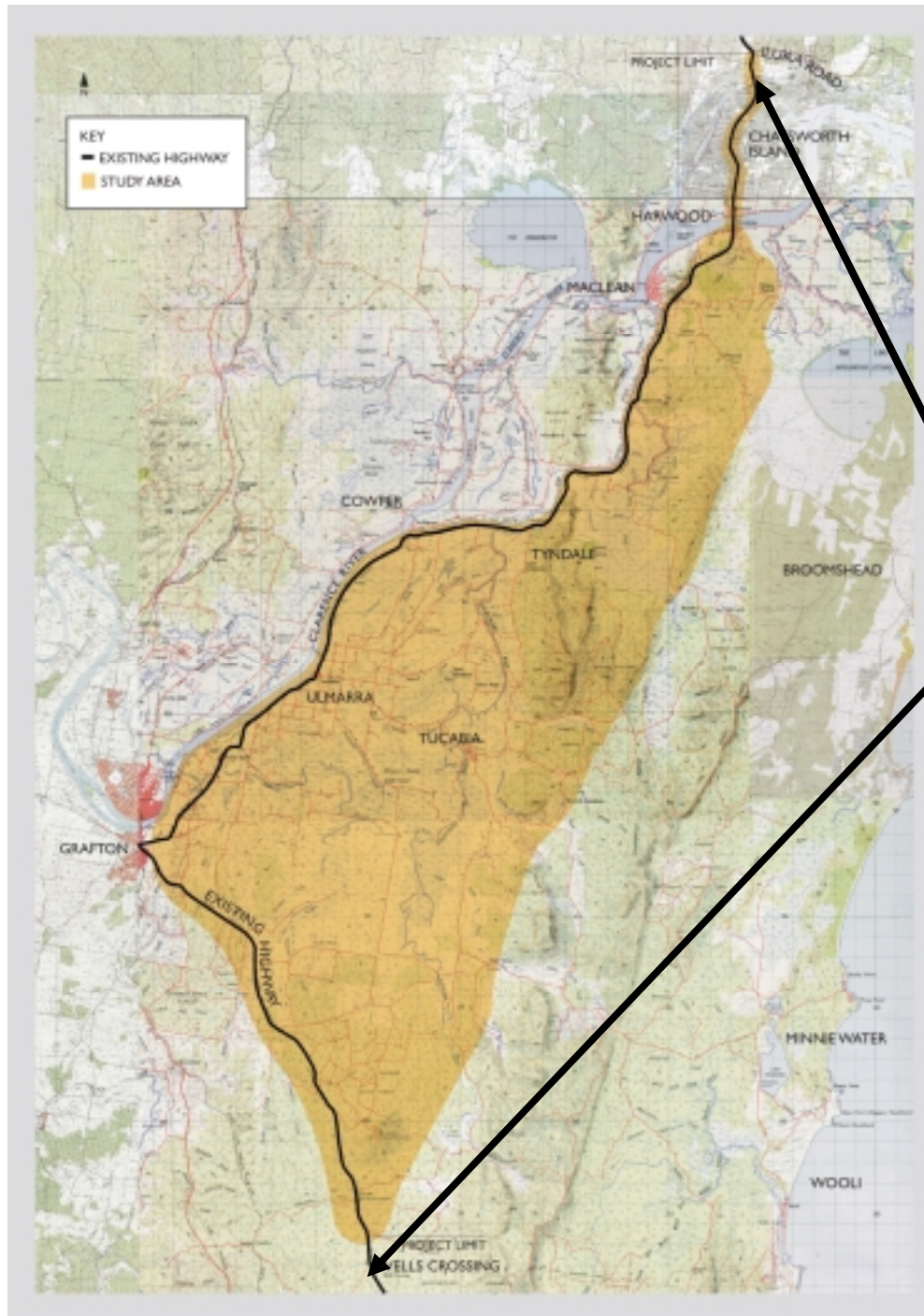
# The Big Picture



# Pacific Highway Upgrading Study Area



So what is a study area?



# Study Area



› Northern project limit  
- Iluka Road

Southern project  
limit - Wells  
Crossing

Approx 80 km of  
existing highway



# Wells Crossing to Iluka Road

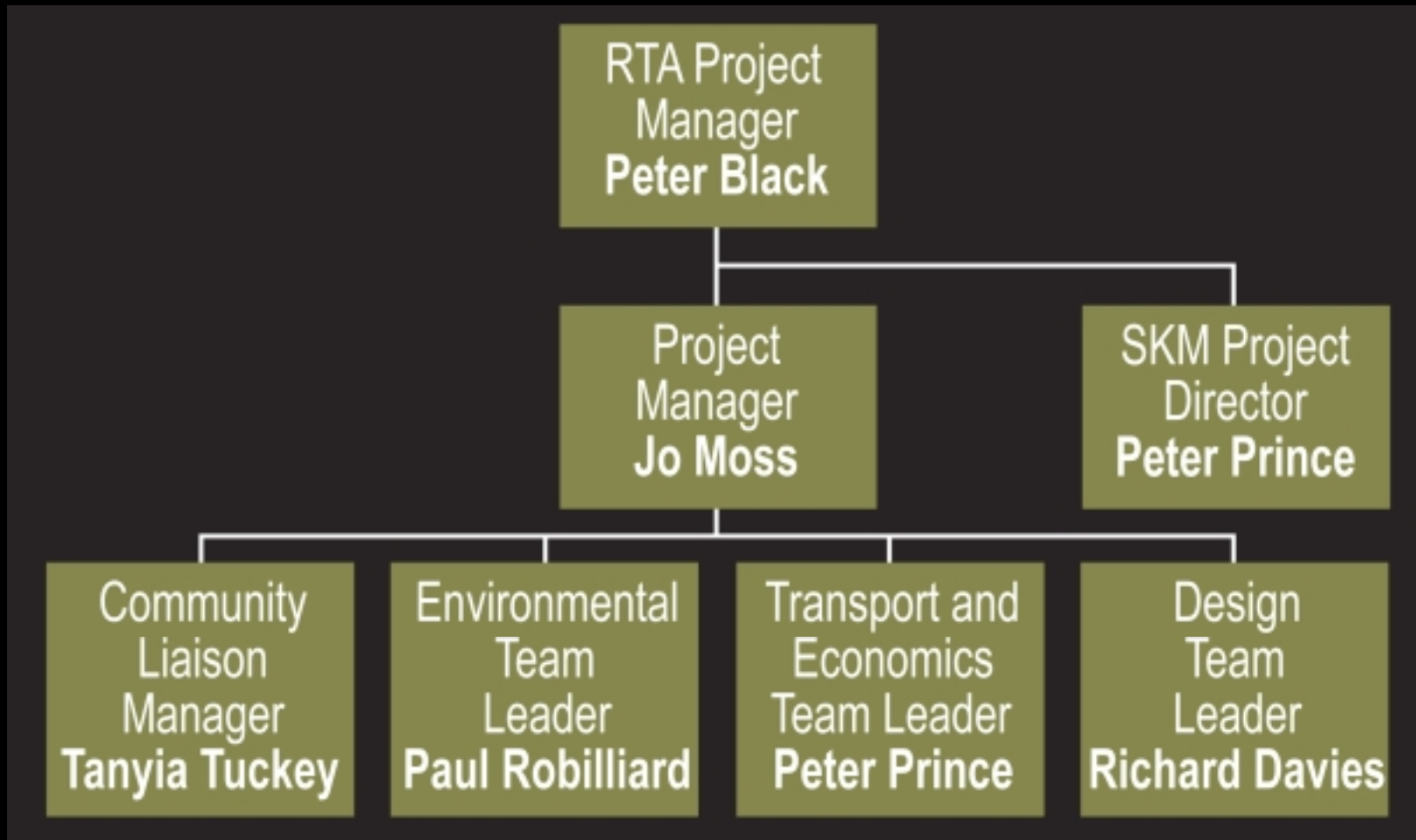


*Jo Moss*

Project Manager

Sinclair Knight Merz

# Wells Crossing to Iluka Road Upgrade Study Team



# Wells Crossing to Iluka Road Scope of Investigations (1)



## › **Transportation**

- » highway safety
- » future population and employment areas
- » good access to existing centres (Grafton, Maclean, Ulmarra ...)
- » accommodate travel improvements for regional and local traffic

## › **Economics**

- » cost and benefits of the upgraded highway
- » potential business and land use impacts
- » regional economic development benefits
- » construction employment benefits

# Wells Crossing to Iluka Road Scope of Investigations (2)



## › **Environmental**

### » Flora and fauna

- Threatened species and endangered ecological communities
- SEPP 14 wetlands
- habitat, wildlife corridors, nests and food trees

### » Heritage - Indigenous and non-indigenous sites and areas

### » Noise impacts to residences and other noise sensitive land uses

### » Air quality and greenhouse emissions, climate

### » Water quality

# Wells Crossing to Iluka Road Scope of Investigations (3)



- › **Land Use, planning and zoning**
  - » Existing and future land use
  - » Cane farming and other rural production
  - » Forestry
  - » Rural residential, urban areas and villages
  - » Highway related uses - motels and truck stops
  
- › **Social**
  - » Visual and amenity impacts
  - » Community impacts, severance
  - » Local access
  - » Business impacts

# Wells Crossing to Iluka Road Scope of Investigations (4)



## › Design

- » **Engineering design - highway and road corridor, local access**
- » **Aerial photography**
- » **Survey**
- » **Existing highway and bridge condition**
- » **Geotechnical**
- » **Flooding**
- » **Visual and amenity impacts**
- » **Collation of data and information in GIS**
- » **Development of options**
- » **Costing of options**

# Study Process



**WE ARE HERE**

**Preliminary investigations**

*Commenced  
- Oct 2004*

**Generate route options**

*Route options  
display  
- mid 2005*

**Develop route options**

*Preferred Option  
display  
- late 2005*

**Select and develop  
concept design**

*Preferred Route  
and Concept Design  
- July 2006*

# Wells Crossing to Iluka Road Anticipated CLG Meetings



Preliminary investigations



Generate route options



Develop route options



Select and develop  
concept design

Familiarisation

*December  
2004*

Design issues

Update on investigations

Route Options

*display  
- mid 2005*

Update on investigations

Preferred Option

*display  
- late 2005*

Environmental impact  
assessment

*Preferred Route  
and Concept  
Design*

The next steps

*- July 2006*



# Wells Crossing to Iluka Road



*Tanyia Tuckey*

*Community Consultation Manager*

Sinclair Knight Merz

# Community Information Sessions



What do you believe are the

- › key criteria for a successful project
- › issues regarding this project
- › information needs
- › anything else?

# Key Issues from Community Sessions



- › Key issues from the Community Information Sessions

## Key Issues from Community Sessions



- › Do these issues match this groups perceptions?
- › How would you rank the issues in order of importance

## How to contact the project team



› Freecall number -

1800 557 673

› Web-site -

[www.rta.nsw.gov.au/pacific](http://www.rta.nsw.gov.au/pacific)

› Email address -

[welldcrossingtoiluka@skm.com.au](mailto:welldcrossingtoiluka@skm.com.au)

# Wells Crossing to Iluka Road Upgrade



***Closing remarks...***

***...Thank you.***