

---

APPENDIX B  
NOISE MEASUREMENT LOCATIONS

---

# W2G Traffic Noise Study

## Noise Logger Results

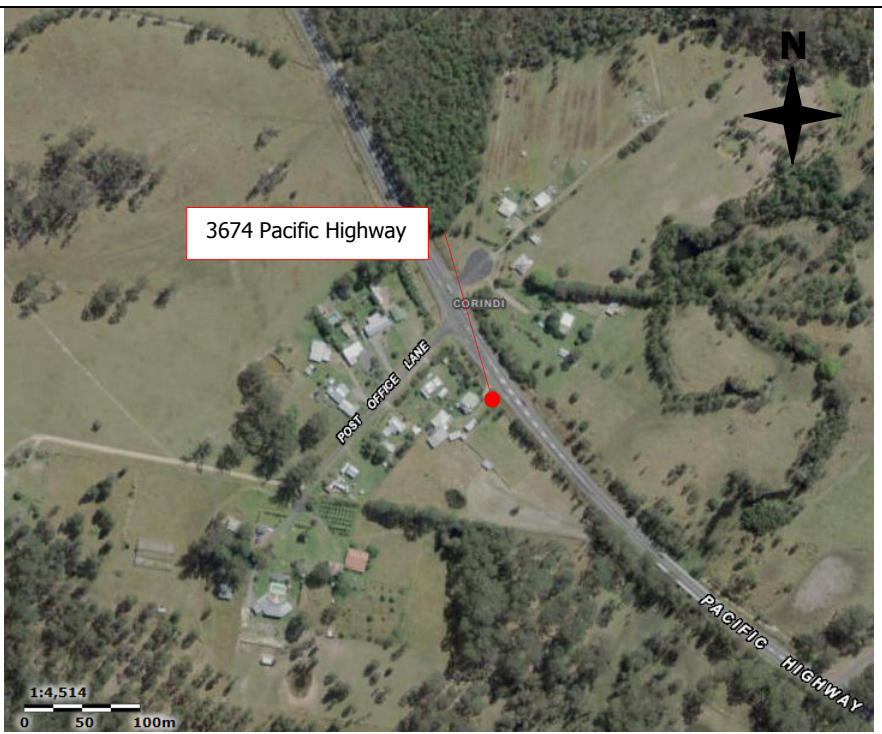
<b>Logger</b>	L1 (Free field)
<b>Address</b>	3674 Pacific Highway
<b>Start</b>	20 November 2012
<b>Finish</b>	30 November 2012

<b>Overall Noise (dBA)</b>	
<b>L<sub>Aeq,15hr</sub> / L<sub>A10</sub></b>	70 / 74
<b>L<sub>Aeq,9hr</sub> / L<sub>A10</sub></b>	70 / 72
<b>L<sub>A1</sub> Range</b>	63 to 88

<b>Rating Background Level (RBL)</b>	
--------------------------------------	--

<b>Daytime (7.00am -10.00pm)</b>	48
<b>Evening (6.00pm-10.00pm)</b>	44
<b>Night time (10.00pm-7.00am)</b>	44

**Comment:**  
 Approximately 12 m setback distance from the road. Ambient noise environment dominated by traffic noise from the Pacific Highway.



Source: NSW Six Maps



# W2G Traffic Noise Study

## Noise Logger Results

<b>Logger</b>	L2 (Free field)
<b>Address</b>	4028 Pacific Highway
<b>Start</b>	20 November 2012
<b>Finish</b>	30 November 2012

### Overall Noise (dBA)

<b>L<sub>Aeq,15hr</sub> / L<sub>A10</sub></b>	61 / 65
<b>L<sub>Aeq,9hr</sub> / L<sub>A10</sub></b>	61 / 66
<b>L<sub>A1</sub> Range</b>	59 to 76

### Rating Background Level (RBL)

<b>Daytime (7.00am -10.00pm)</b>	48
<b>Evening (6.00pm-10.00pm)</b>	43
<b>Night time (10.00pm-7.00am)</b>	42

**Comment:**

Approximately 59 m setback distance from the road. Ambient noise environment dominated by traffic noise from the Pacific Highway.



Source: NSW Six Maps





# W2G Traffic Noise Study

## Noise Logger Results

<b>Logger</b>	L3 (Facade)
<b>Address</b>	11 Dunmar Lane
<b>Start</b>	21 November 2012
<b>Finish</b>	30 November 2012
<b>Overall Noise (dBA)</b>	
<b>L<sub>Aeq,15hr</sub> / L<sub>A10</sub></b>	69 / 74
<b>L<sub>Aeq,9hr</sub> / L<sub>A10</sub></b>	68 / 72
<b>L<sub>A1</sub> Range</b>	71 to 83
<b>Rating Background Level (RBL)</b>	
<b>Daytime (7.00am -10.00pm)</b>	48
<b>Evening (6.00pm-10.00pm)</b>	44
<b>Night time (10.00pm-7.00am)</b>	38
<b>Comment:</b>	
Approximately 16 m setback distance from the road. Ambient noise environment dominated by traffic noise from the Pacific Highway.	



Source: NSW Six Maps



# W2G Traffic Noise Study

## Noise Logger Results

<b>Logger</b>	L4 (Free field)
<b>Address</b>	5092 Pacific Highway
<b>Start</b>	20 November 2012
<b>Finish</b>	30 November 2012

### Overall Noise (dBA)

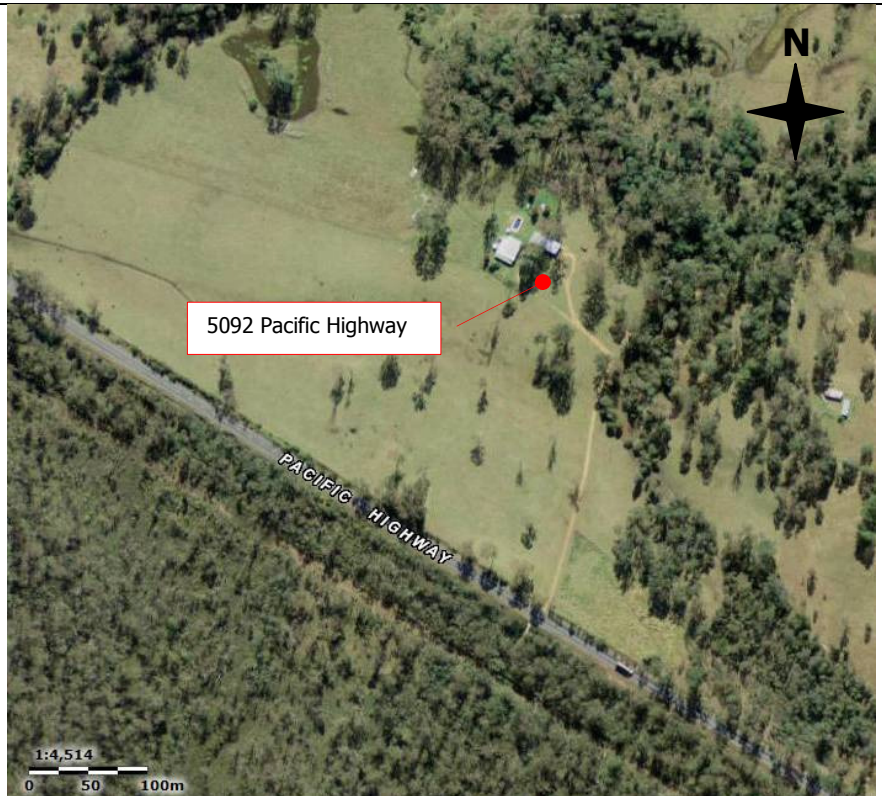
<b>L<sub>Aeq,15hr</sub> / L<sub>A10</sub></b>	53 / 57
<b>L<sub>Aeq,9hr</sub> / L<sub>A10</sub></b>	55 / 59
<b>L<sub>A1</sub> Range</b>	51 to 90

### Rating Background Level (RBL)

<b>Daytime (7.00am -10.00pm)</b>	43
<b>Evening (6.00pm-10.00pm)</b>	43
<b>Night time (10.00pm-7.00am)</b>	42

**Comment:**

Approximately 220 m setback distance from the road. Traffic noise from the Pacific Highway audible during both day and night time. Ambient noise during night time is dominated by traffic noise.



Source: NSW Six Maps





# W2G Traffic Noise Study

## Noise Logger Results

<b>Logger</b>	L5 (Free field)
<b>Address</b>	Side of Pacific Highway near Kungala Road
<b>Start</b>	20 November 2012
<b>Finish</b>	30 November 2012
<b>Overall Noise (dBA)</b>	
<b>L<sub>Aeq,15hr</sub> / L<sub>A10</sub></b>	70 / 74
<b>L<sub>Aeq,9hr</sub> / L<sub>A10</sub></b>	69 / 73
<b>L<sub>A1</sub> Range</b>	71 to 84
<b>Rating Background Level (RBL)</b>	
<b>Daytime (7.00am -10.00pm)</b>	47
<b>Evening (6.00pm-10.00pm)</b>	38
<b>Night time (10.00pm-7.00am)</b>	34
<b>Comment:</b>	
Approximately 23 m setback distance from the road. Ambient noise environment dominated by traffic noise from the Pacific Highway.	



Source: NSW Six Maps



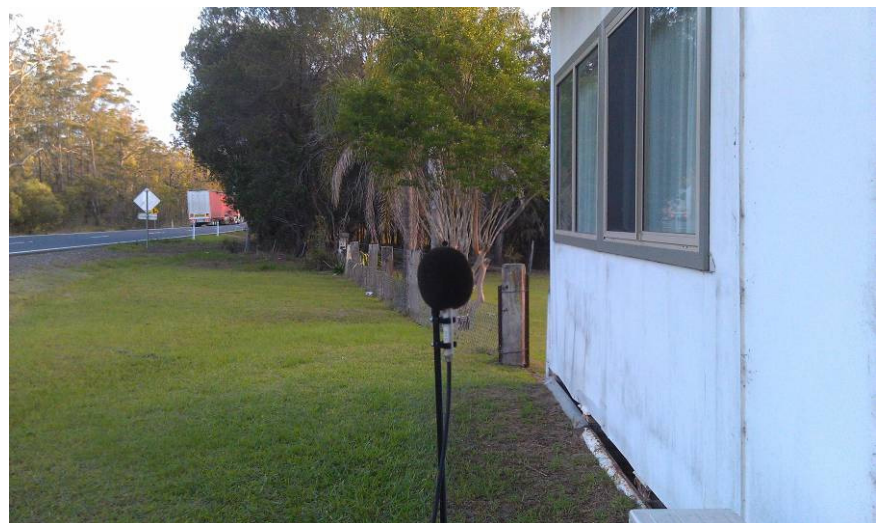
# W2G Traffic Noise Study

## Noise Logger Results

<b>Logger</b>	L6 (Free field)
<b>Address</b>	5631 Pacific Highway
<b>Start</b>	20 November 2012
<b>Finish</b>	30 November 2012
<b>Overall Noise (dBA)</b>	
<b>L<sub>Aeq,15hr</sub> / L<sub>A10</sub></b>	69 / 72
<b>L<sub>Aeq,9hr</sub> / L<sub>A10</sub></b>	69 / 69
<b>L<sub>A1</sub> Range</b>	65 to 92
<b>Rating Background Level (RBL)</b>	
<b>Daytime (7.00am -10.00pm)</b>	44
<b>Evening (6.00pm-10.00pm)</b>	43
<b>Night time (10.00pm-7.00am)</b>	43
<b>Comment:</b>	
Approximately 11 m setback distance from the road. Ambient noise environment dominated by traffic noise from the Pacific Highway.	



Source: NSW Six Maps





# W2G Traffic Noise Study

## Noise Logger Results

<b>Logger</b>	L6 (Facade)
<b>Address</b>	5631 Pacific Highway
<b>Start</b>	20 November 2012
<b>Finish</b>	30 November 2012
<b>Overall Noise (dBA)</b>	
<b>L<sub>Aeq,15hr</sub> / L<sub>A10</sub></b>	72 / 76
<b>L<sub>Aeq,9hr</sub> / L<sub>A10</sub></b>	72 / 73
<b>L<sub>A1</sub> Range</b>	71 to 90
<b>Rating Background Level (RBL)</b>	
<b>Daytime (7.00am -10.00pm)</b>	46
<b>Evening (6.00pm-10.00pm)</b>	41
<b>Night time (10.00pm-7.00am)</b>	40
<b>Comment:</b>	
Approximately 11 m setback distance from the road. Ambient noise environment dominated by traffic noise from the Pacific Highway.	



Source: NSW Six Maps

