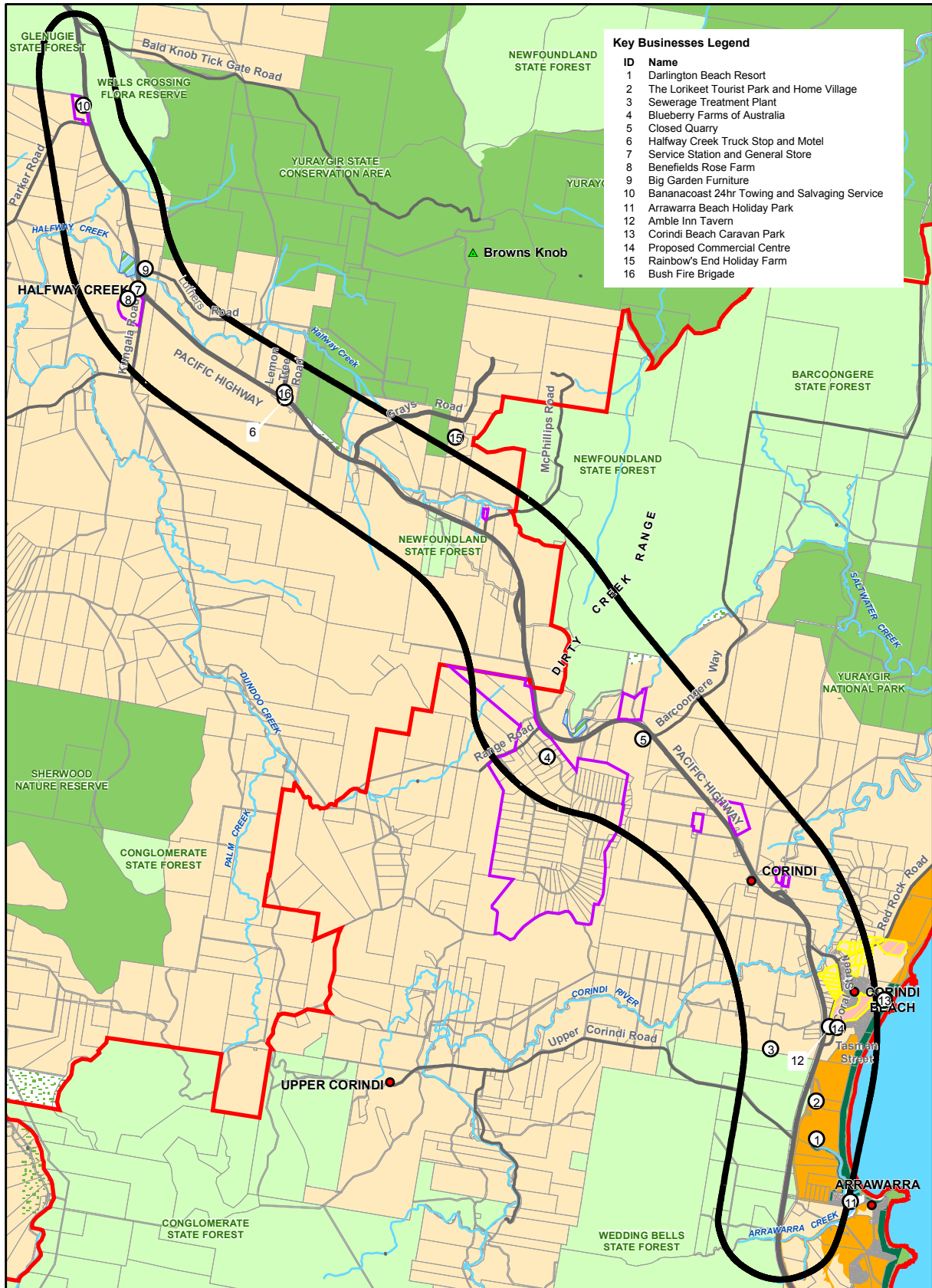


Pacific Highway Upgrade - Woolgoolga to Wells Crossing
Preferred Route Report



/AWWC_PRR_Fig_6_landuse_300306.mxd 30 March 2006

Existing Land Use

Spatial layers courtesy of Coffs Harbour City Council, NSW Department of Lands, NSW Roads & Traffic Authority, Geoscience Australia, NSW Department of Environment & Conservation.

Figure 3.6