

#### **5.1.4 Purple Option**

An overall plan of the Purple option is shown on Figure 5.15 while plans of each section are shown on Figures 5.16 (Section A) to 5.20 (Section E) inclusive.

##### **Section A**

This option would retain the existing highway as a local access road in the Class M scenario with construction of two new carriageways. The new carriageways would be located on the western side of the existing highway to limit the impact on the old Pacific Highway and the caravan parks on the eastern side. The existing road reserve is wider on the western side therefore the impact to the Wedding Bells State Forest would be minimised and there are no private property accesses on the western side of the existing alignment. This arrangement would allow the possibility of an initial upgrade directly to Class M if required.

Interchange options in this section are the same as the Blue option.

##### **Section B**

As an alternative to diverting local traffic through Corindi Beach, this option would provide two new carriageways in the Class M scenario adjacent to and on the west side of the existing carriageway from Tasman Street to beyond Coral Street. Between Coral Street and north of Corindi this option is a realignment of the existing highway (straightening of curves) through the Blackadder Gully and Corindi areas to achieve the 110 km/h design speed. From north of Corindi to the end of Section B, the Purple option is the same as the Blue option. Therefore, construction of a new carriageway on the east side of the existing highway and reconstruction of the existing highway to achieve 110 km/h design speed for the northbound carriageway.

The existing highway would be utilised as a local access road between Tasman Street and Corindi and connections to the proposed carriageways would need to be considered.

Construction of this option could be staged in the Class A scenario to limit initial capital expenditure.

Realignment to the east of Corindi would avoid a direct impact on the Corindi community. However, the Purple option in this area has a direct impact on dwellings around Blackadder Road.

##### **Section C**

The Purple option is shown on Figure 5.18 and explores a deviation of the highway to the south of the existing highway alignment before Dirty Creek Range (west of Flinty Road) and then through Dirty Creek Range, adjacent to the constraint of the blueberry farming area. Impact on the blueberry farming area would be minor with this option. The escarpment along the southeastern side of the blueberry farming area also presented a notable obstacle to the vertical grading of the proposed highway alignment. Ultimately, an option was determined that skirted the southeastern side of the escarpment on approach to Dirty Creek Range. This option would enable the climb up the range to be broken into two sections to aid heavy vehicles negotiating the climb through Dirty Creek Range.

The connection of this option back to the existing alignment was proposed in close proximity to the existing Pacific Highway / Range Road intersection. However, a connection at Range Road would present several problems with an ultimate upgrading to a Class M standard. There would be a need for a local access road connection or a grade separation at the top of Dirty Creek Range. A local access road would need to be constructed as a new roadway, whilst off and on ramps for a grade separated facility here would be difficult to construct due to the steep terrain.

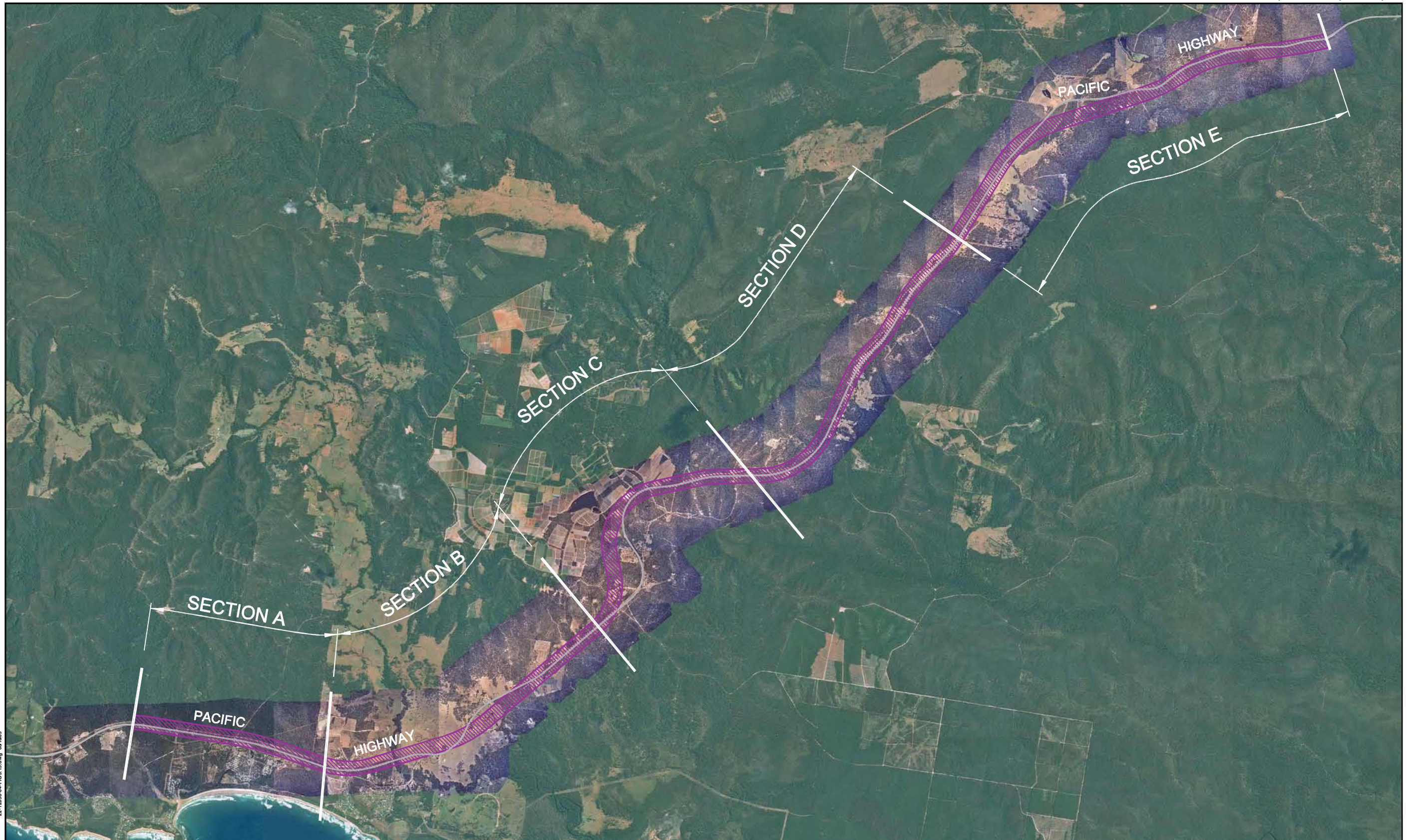
#### **Section D**

The Purple option is the same as the Green option through this section.

#### **Section E**

The Purple option is the same as the Green option through this section.





22-12058-04-FIG.15.dwg 06/10/05

<p>0 1 2 3 4 Kilometres</p> <p>Map Projection: Universal Transverse Mercator Horizontal Datum: Geoidetic Datum of Australia 1994 Grid: Map Grid of Australia, Zone 56</p>		<p><b>LEGEND</b></p> <p> Purple Option - 250m wide Corridor</p>
---	--	---

Spatial layers courtesy of Coffs Harbour City Council, NSW Department of Environment and Conservation, NSW Forests, NSW Department of Lands and NSW Roads and Traffic Authority





22-12068-04-FIG.5.16.dwg 06/10/05

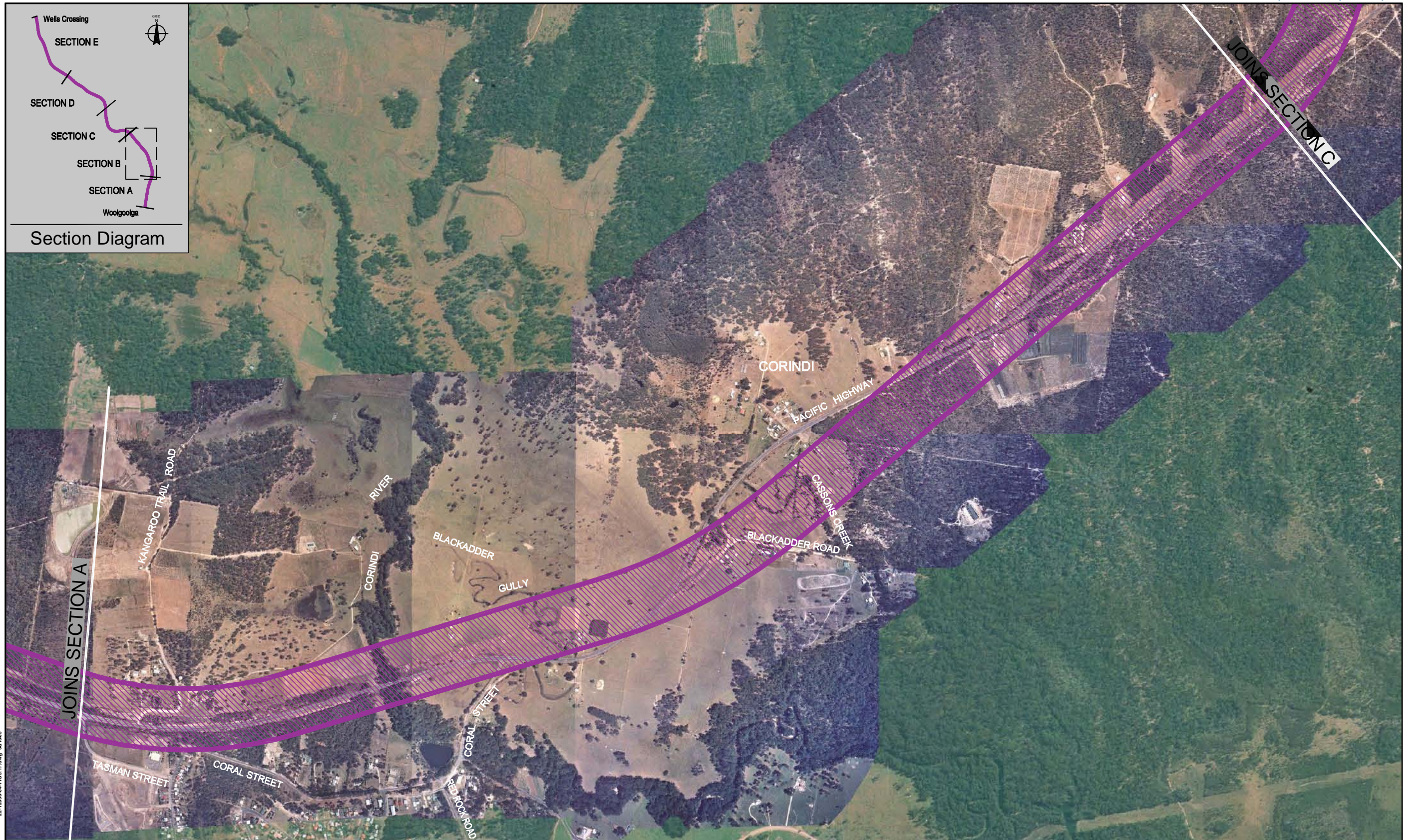
<p>0 0.1 0.2 0.3 0.4 Kilometres</p>		<p><b>LEGEND</b></p> <p> Purple Option - 250m wide Corridor</p>
<p>Map Projection: Universal Transverse Mercator Horizontal Datum: Geoidic Datum of Australia 1994 Grid: Map Grid of Australia, Zone 56</p>		

Spatial layers courtesy of Coffs Harbour City Council, NSW Department of Environment and Conservation, NSW Forests, NSW Department of Lands and NSW Roads and Traffic Authority

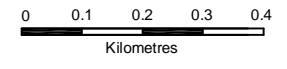
Purple Option - Section A

Figure 5.16

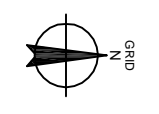





22-12058-04-FIG.5.17.dwg 06/10/05



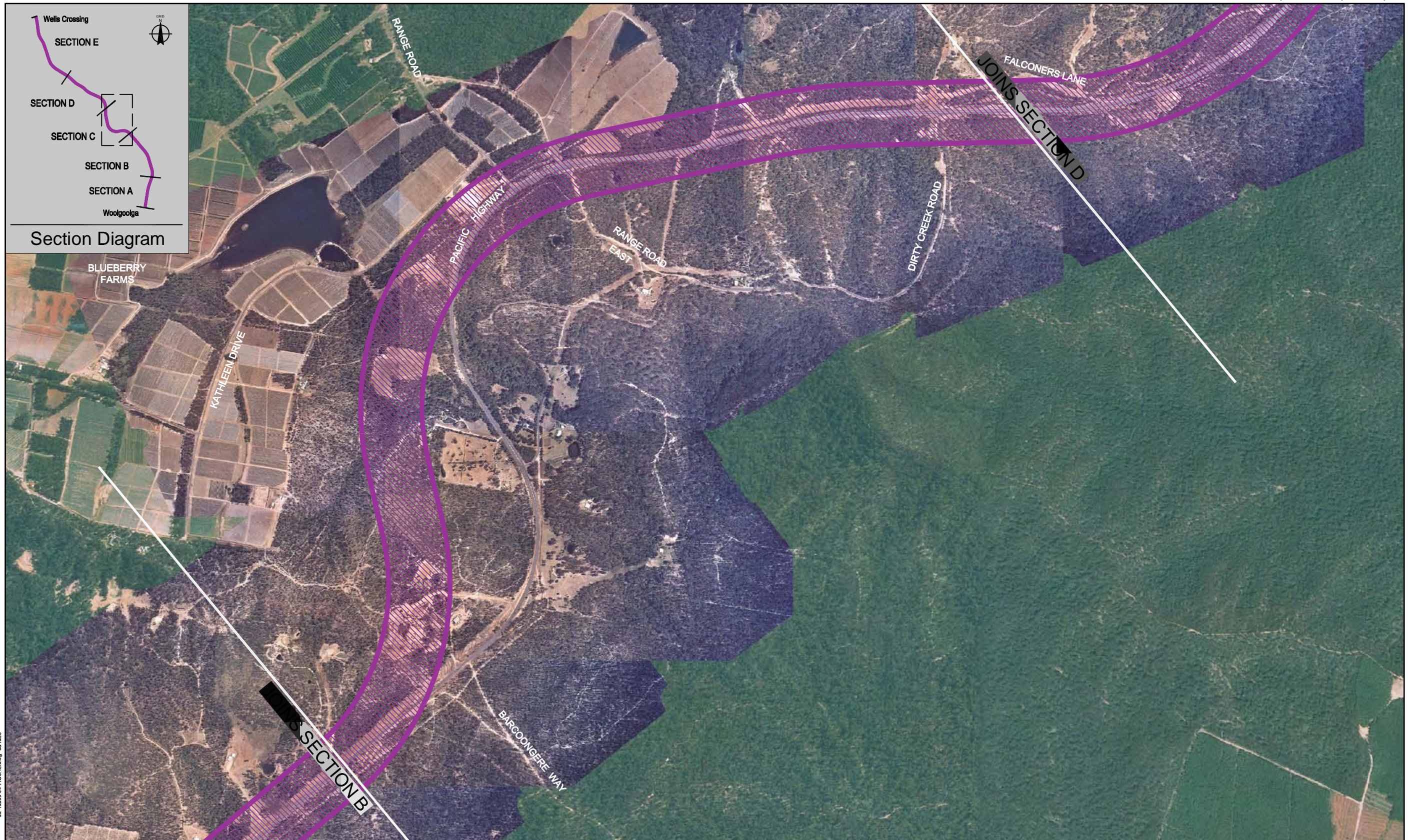
Map Projection: Universal Transverse Mercator  
Horizontal Datum: Geoid Datum of Australia 1994  
Grid: Map Grid of Australia, Zone 56



**LEGEND**  
 Purple Option - 250m wide Corridor

Spatial layers courtesy of Coffs Harbour City Council, NSW Department of Environment and Conservation, NSW Forests, NSW Department of Lands and NSW Roads and Traffic Authority





22-12058-04-FIG.5.18.dwg 06/10/05

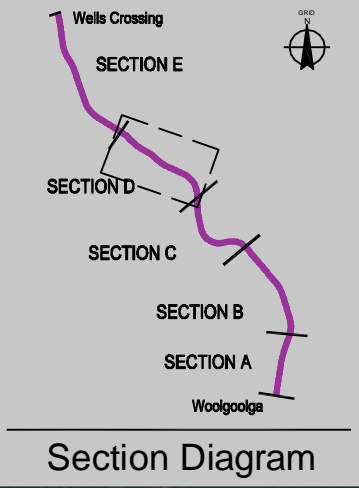
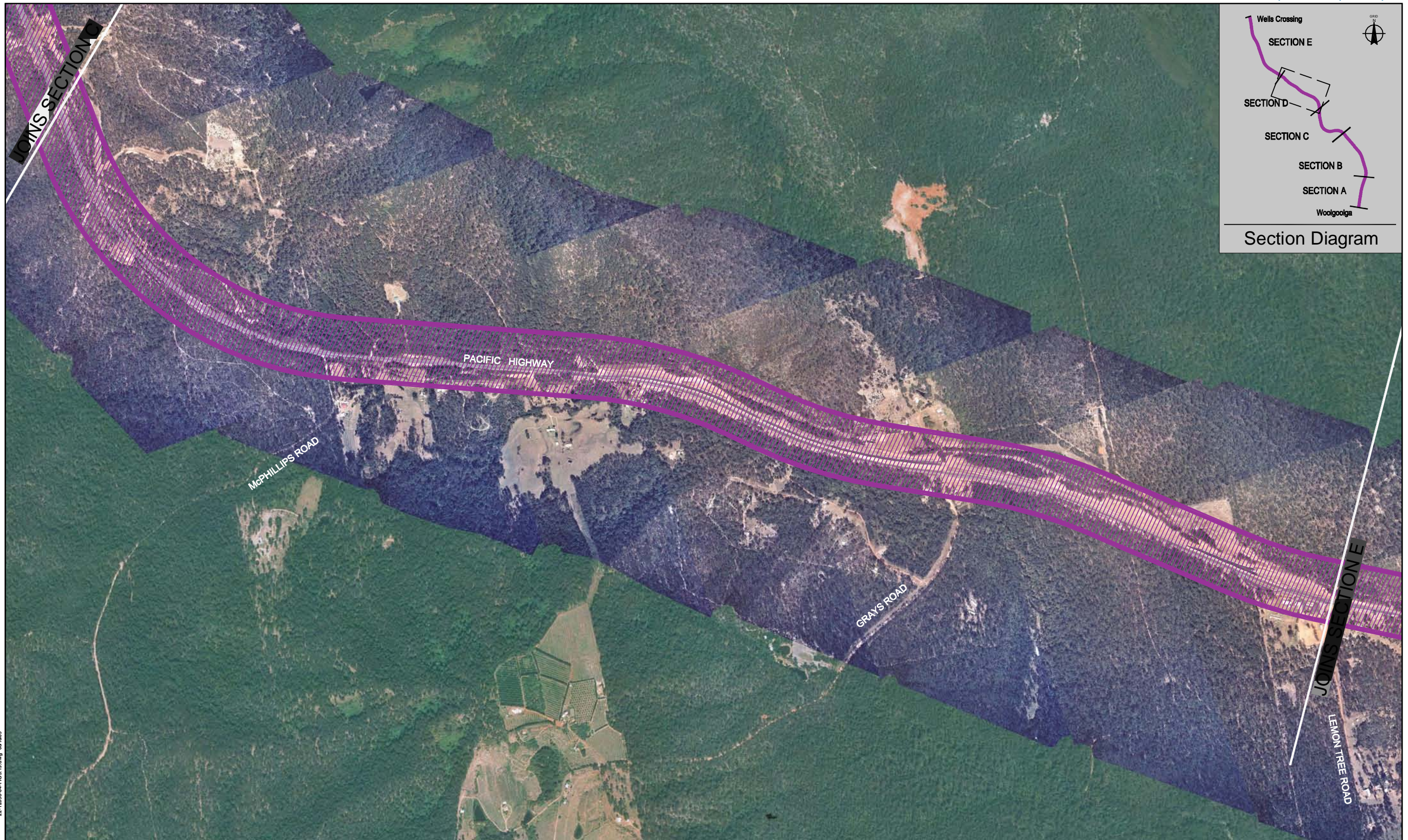
<p>0 0.1 0.2 0.3 0.4 Kilometres</p> <p>Map Projection: Universal Transverse Mercator Horizontal Datum: Geoidetic Datum of Australia 1994 Grid: Map Grid of Australia, Zone 56</p>		<p><b>LEGEND</b></p> <p> Purple Option - 250m wide Corridor</p>
---	--	---

Spatial layers courtesy of Coffs Harbour City Council, NSW Department of Environment and Conservation, NSW Forests, NSW Department of Lands and NSW Roads and Traffic Authority

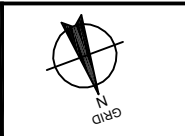
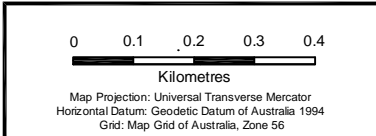
Purple Option - Section C


Figure 5.18





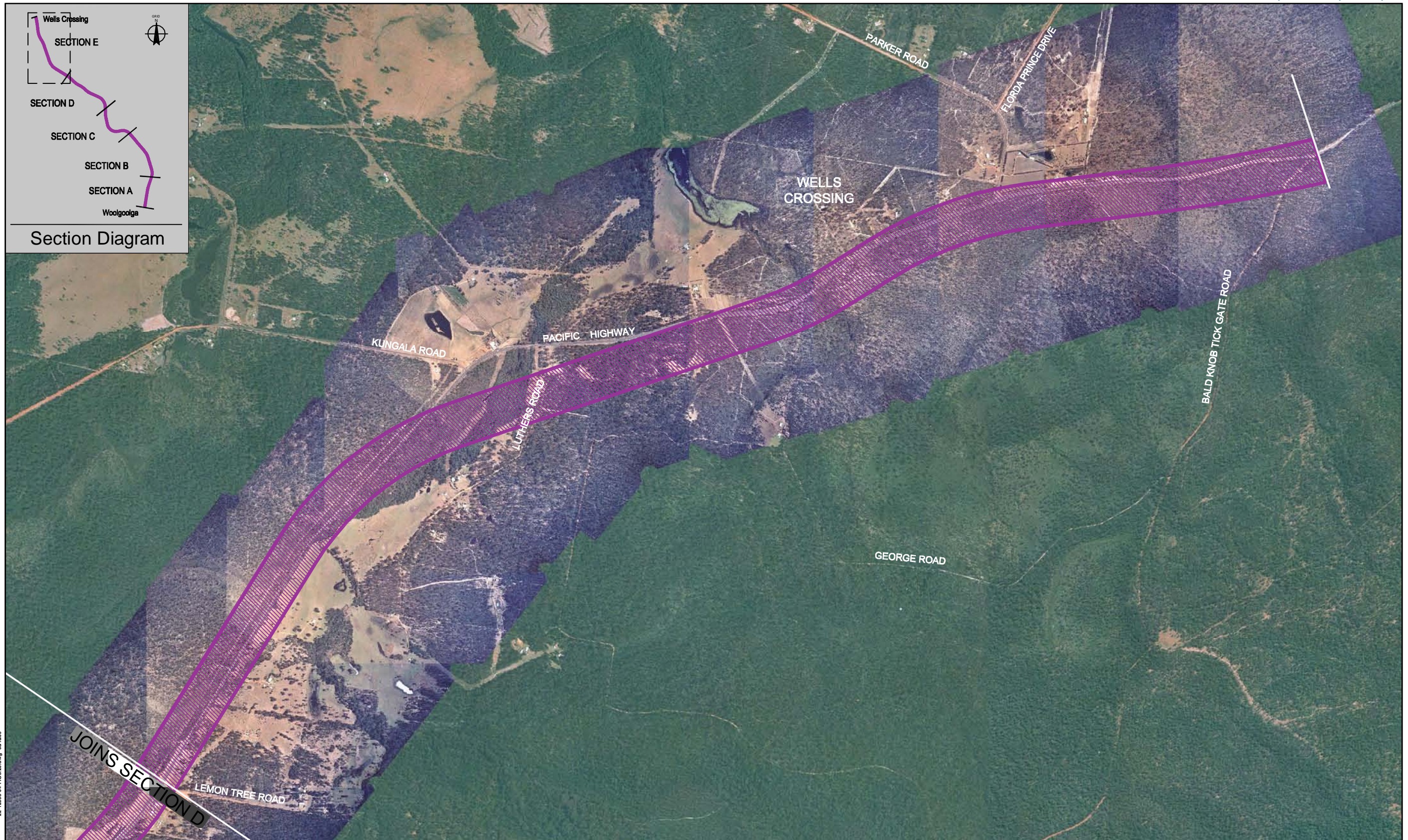
22-12058-04-FIG.5.19.dwg 06/10/05



**LEGEND**  
 Purple Option - 250m wide Corridor

Spatial layers courtesy of Coffs Harbour City Council, NSW Department of Environment and Conservation, NSW Forests, NSW Department of Lands and NSW Roads and Traffic Authority





22-12058-04-FIG.5.20.dwg 06/10/05

<p>0 0.2 0.4 0.6 0.8 Kilometres</p>		<p><b>LEGEND</b>   Purple Option - 250m wide Corridor</p>
<p>Map Projection: Universal Transverse Mercator  Horizontal Datum: Geoidic Datum of Australia 1994  Grid: Map Grid of Australia, Zone 56</p>		

Spatial layers courtesy of Coffs Harbour City Council, NSW Department of Environment and Conservation, NSW Forests, NSW Department of Lands and NSW Roads and Traffic Authority