

5.1.5 Orange Option

An overall plan of the Orange option is shown on Figure 5.21 while plans of each section are shown on Figures 5.22 (Section A) to 5.26 (Section E) inclusive.

Section A

The Orange option is the same as the Purple option through this section except for a realignment of the two new carriageways to the west at the northern end of the section.

Interchange options in this section are the same as the Blue option, however the position of the proposed interchange will depend upon the location of the preferred route through Sections A and B.

Section B

The Orange option is a proposed realignment of the highway some distance to the west of the existing alignment. This alignment would deviate from the existing highway south of Tasman Street at the start of Section B, cross Kangaroo Trail Road and pass west of Blackadder Gully and Corindi community and rejoin close to the existing highway at the end of Section B. This would allow re-use of the existing highway throughout the section as a local access road past Corindi Beach and Corindi.

The alignment would be located further west across the Corindi floodplain where the impacts of flooding afflux upstream would be minimised. Therefore it would require shorter waterway crossings and have shorter sections on soft soils. Terrain shielding would aid in noise reduction for both Corindi Beach and Corindi.

Section C

The Orange option is the same as the Purple option through this section.

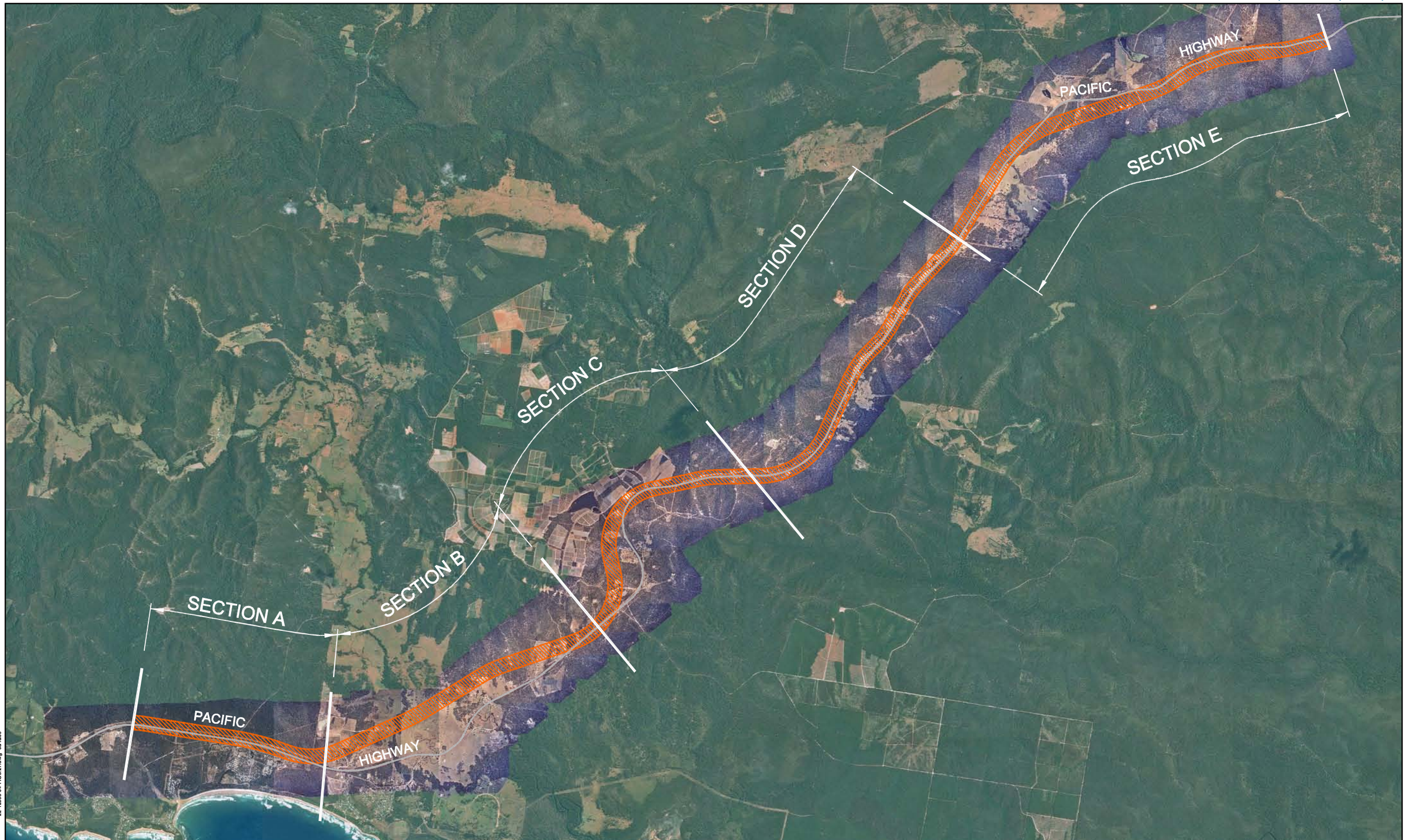
Section D

The Orange option is the same as the Purple option through this section.

Section E

The Orange option is the same as the Purple option through this section.

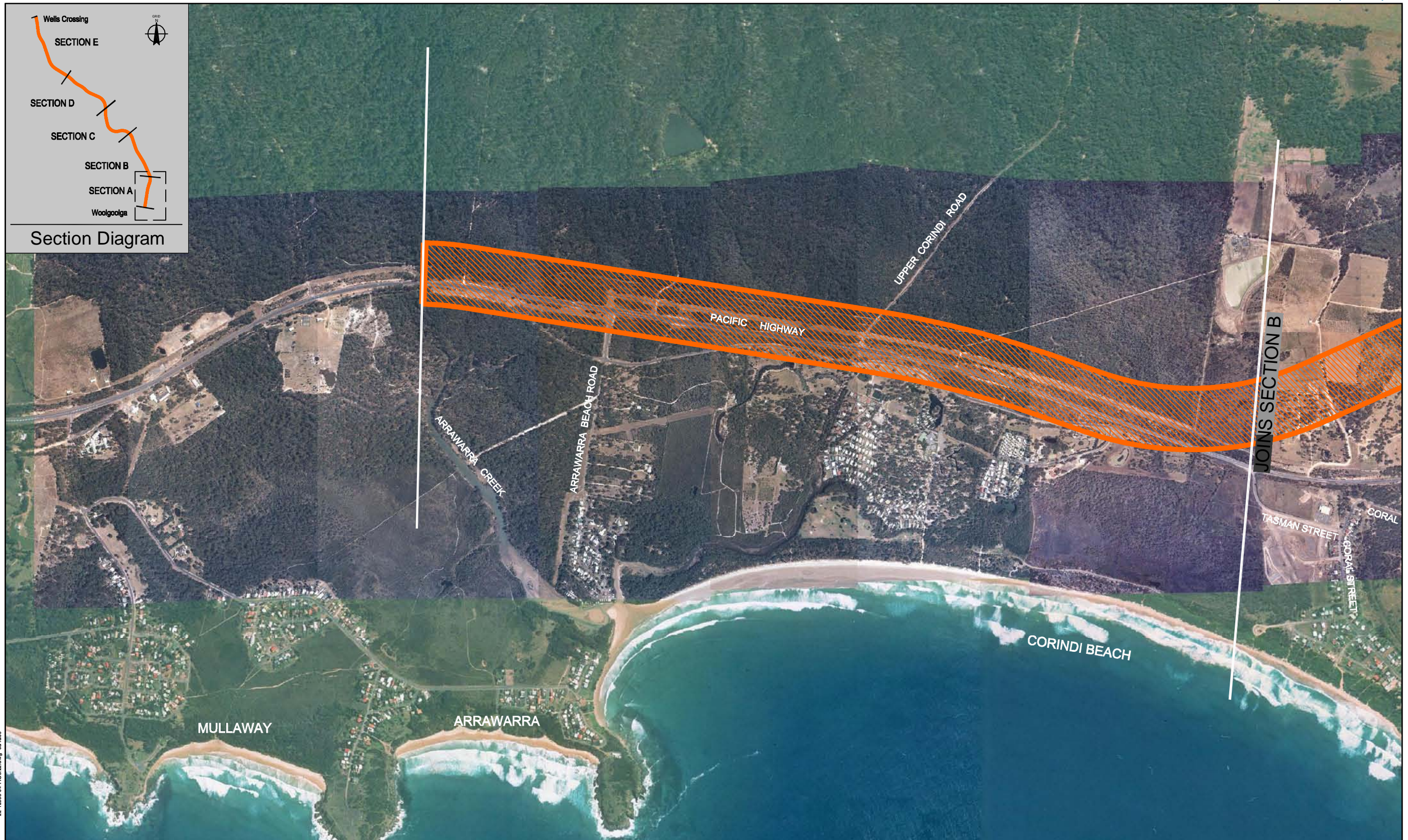
This page is blank.



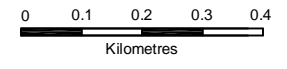
22-12058-04-FIG 5.21.dwg 06/10/05

<p>Kilometres</p> <p>Map Projection: Universal Transverse Mercator Horizontal Datum: Geoidetic Datum of Australia 1994 Grid: Map Grid of Australia, Zone 56</p>		<p>LEGEND</p> <p> Orange Option - 250m wide Corridor</p>
---	--	---

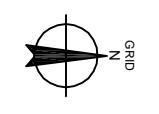
Spatial layers courtesy of Coffs Harbour City Council, NSW Department of Environment and Conservation, NSW Forests, NSW Department of Lands and NSW Roads and Traffic Authority




22-12688-04-FIG.5.22.dwg 06/10/05



Map Projection: Universal Transverse Mercator
Horizontal Datum: Geoidetic Datum of Australia 1994
Grid: Map Grid of Australia, Zone 56

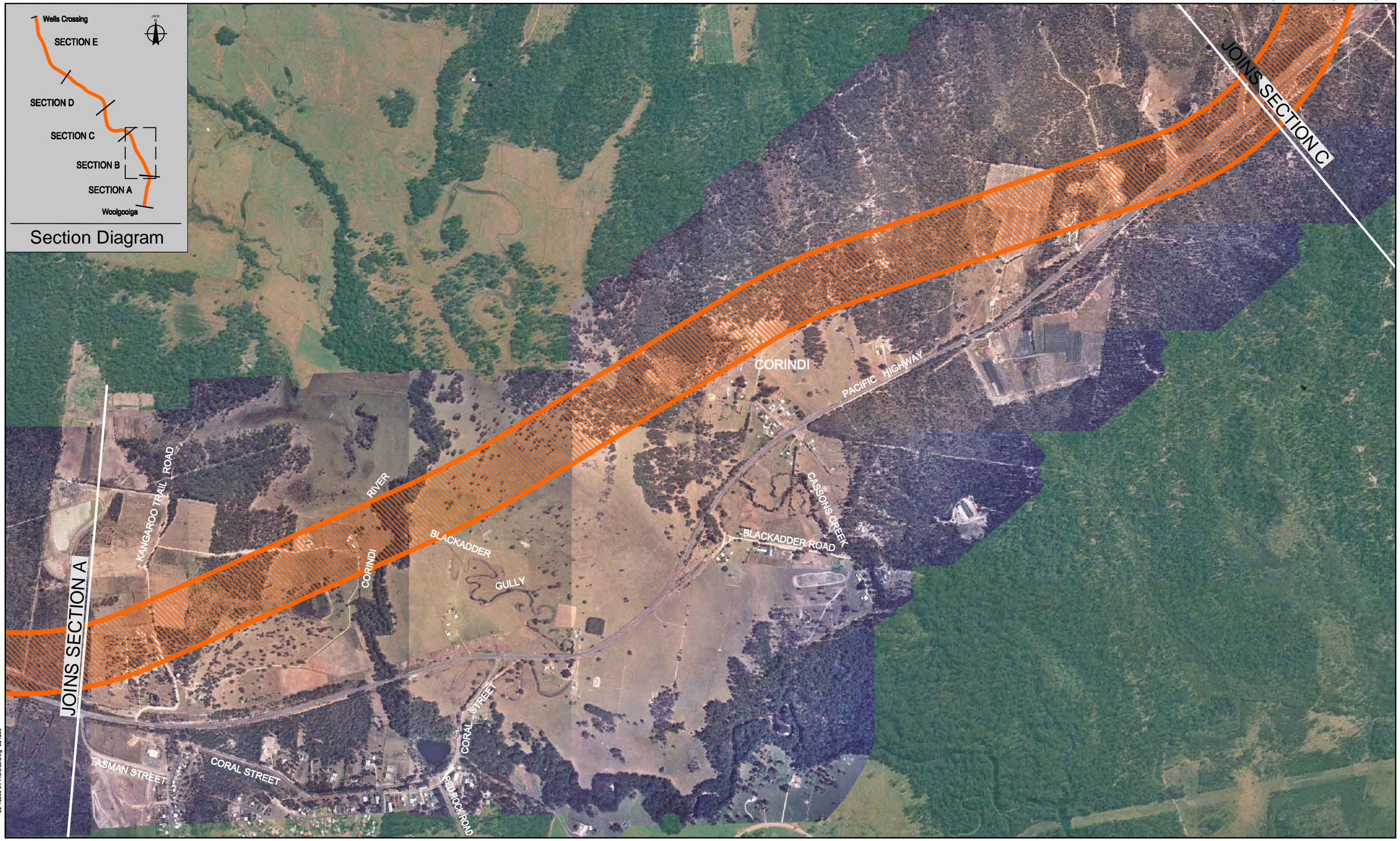


LEGEND
 Orange Option - 250m wide Corridor

Spatial layers courtesy of Coffs Harbour City Council, NSW Department of Environment and Conservation, NSW Forests, NSW Department of Lands and NSW Roads and Traffic Authority

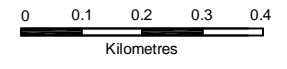
Orange Option - Section A

Figure 5.22

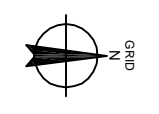



Section Diagram

22-12058-04-FIG.5.23.dwg 06/10/05



Map Projection: Universal Transverse Mercator
Horizontal Datum: Geoidetic Datum of Australia 1994
Grid: Map Grid of Australia, Zone 56

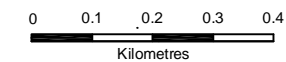


LEGEND
 Orange Option - 250m wide Corridor

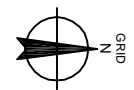
Spatial layers courtesy of Coffs Harbour City Council, NSW Department of Environment and Conservation, NSW Forests, NSW Department of Lands and NSW Roads and Traffic Authority




22-12058-04-FIG 5.24.dwg 06/10/05



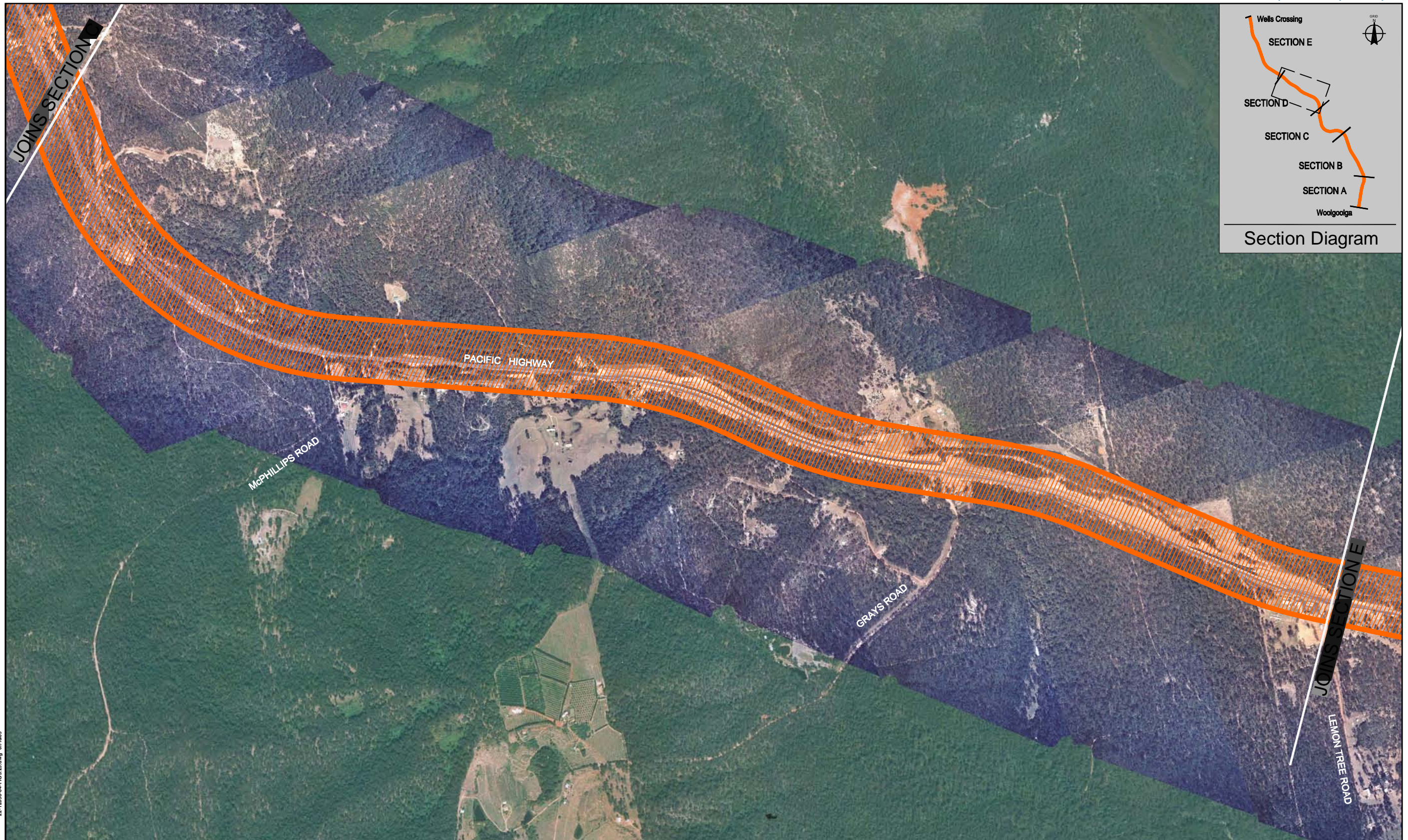
Map Projection: Universal Transverse Mercator
Horizontal Datum: Geoidic Datum of Australia 1994
Grid: Map Grid of Australia, Zone 56



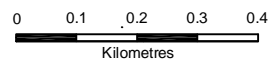
LEGEND

 Orange Option - 250m wide Corridor


Spatial layers courtesy of Coffs Harbour City Council, NSW Department of Environment and Conservation, NSW Forests, NSW Department of Lands and NSW Roads and Traffic Authority



22-12058-04-FIG.5.25.dwg 07/10/05



LEGEND

 Orange Option - 250m wide Corridor

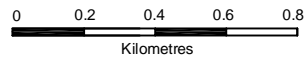
Map Projection: Universal Transverse Mercator
Horizontal Datum: Geodetic Datum of Australia 1994
Grid: Map Grid of Australia, Zone 56

Spatial layers courtesy of Coffs Harbour City Council, NSW Department of Environment and Conservation, NSW Forests, NSW Department of Lands and NSW Roads and Traffic Authority



Section Diagram


22-12058-04-FIG.5.26.dwg 07/10/05



Map Projection: Universal Transverse Mercator
Horizontal Datum: Geoidetic Datum of Australia 1994
Grid: Map Grid of Australia, Zone 56



LEGEND

 Orange Option - 250m wide Corridor

Spatial layers courtesy of Coffs Harbour City Council, NSW Department of Environment and Conservation, NSW Forests, NSW Department of Lands and NSW Roads and Traffic Authority