



Australian Government

**BUILDING OUR FUTURE**



Birdseye view artist impression of the new bridge over Richmond River

# New bridge over the Richmond River at Broadwater Woolgoolga to Ballina community update

May 2017

The Australian and NSW governments are jointly funding the \$4.36 billion Woolgoolga to Ballina Pacific Highway upgrade. Roads and Maritime Services Pacific Highway Office and Pacific Complete are working together to deliver the project. As part of the upgrade, a new bridge will be built over the Richmond River at Broadwater.

## IN THIS UPDATE

- Start of investigation work
- Compound site
- Devils Pulpit to Ballina hydrological mitigation report update
- Building foundations
- Innovation – Yellow line trial, Woolgoolga to Ballina
- How this work may affect you

## Managing our project vehicles

Woolgoolga to Ballina project vehicles are restricted to 80 kilometres an hour or less on some local roads to help manage safety and dust.

We have fitted monitoring systems in vehicles, allowing us to track the location and speed of our vehicles as we travel through local communities.

These measures are in place as part of our commitment to managing the impact of our work as the numbers of vehicles and trucks increase on local roads.

## Start of investigation work

In February, Lendlease Engineering was announced as the preferred contractor to deliver the new bridge over the Richmond River about 500 metres north of Broadwater. The new kilometre-long bridge over the Richmond River is one of the two major bridges for the Woolgoolga to Ballina Pacific Highway upgrade. The early concept design in the Broadwater area assessed in 2012 as part of the Environmental Impact Statement included two bridges, one over the Richmond River and another over a floodway on the southern bank. Since then, the two bridges have been combined into one, removing the embankment and increasing the waterway opening.

The investigation work that started in April includes geotechnical investigations to analyse the ground and river conditions. Four drilling rigs will be used to drill about 51 boreholes along the route of the new bridge. Two land base drilling rigs will be set-up and mounted on a truck and on an excavator. A further two rigs will be operated from two barges on the Richmond River. The barges will transport the drilling rig, which will be used to drill boreholes and collect samples from within the river. All geotechnical investigations will be carried out within the approved project boundary.

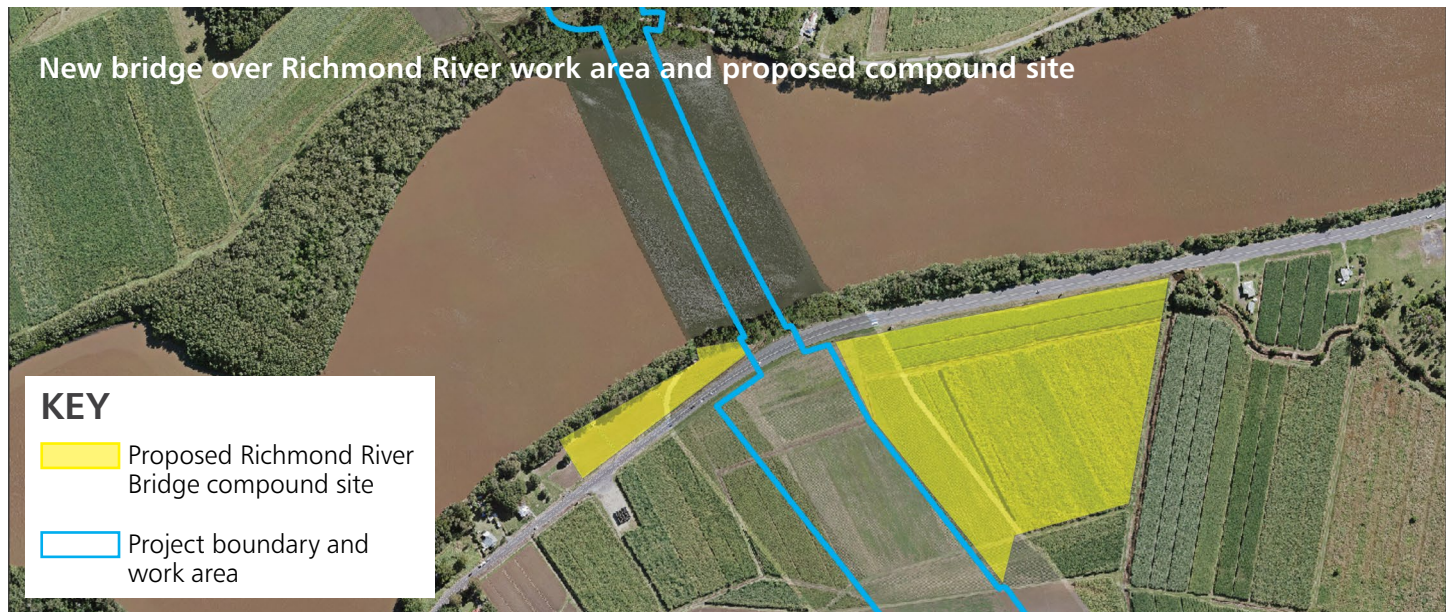
This work also includes ongoing survey activity in the area and will focus on the northern and southern banks of the Richmond River. Survey pegs will be installed to confirm project boundaries and identify control points.

The investigation work is expected to be completed by the end of June, weather permitting.

## Compound site

To build the new bridge a compound site will need to be established close to the work area. The project team has identified a 7.5 hectare property about one kilometre north east of Broadwater. This proposed compound site is currently undergoing assessment against the requirements of our project approval. Pending approvals, we are proposing to start building in the next couple of months with the most of the site complete and operational during the second half of 2017, weather permitting. Please contact the project team if you have any questions or feedback.

While this compound site is undergoing assessment the project team will be storing a number of temporary office buildings within the project boundary next to the existing Pacific Highway.



Artist impression looking from the northern bank of the Richmond River

## Devils Pulpit to Ballina hydrological mitigation report update

The Devils Pulpit to Ballina hydrological mitigation report will be made available during May. This report sets out the flood management objectives and how the project has and will continue to reduce the impacts of flooding in the Richmond River catchment. Your feedback has been considered and addressed in this report. We thank everyone for their involvement during the flooding assessment development. As part of the report's release, we will be holding community drop in sessions during May to discuss the report and respond to any questions or concerns you may have. We will be in touch to confirm locations and dates for these sessions.



Example of drilling rig being operated for geotechnical investigations at the new bridge over the Clarence River at Harwood



Artist impression showing the bridge span over the Richmond River



Example of what piling will look like (indicative only)

## Building foundations

We will start piling for the new bridge over the Richmond River later this year once the early investigation work is completed.

### What is piling?

Piling is used to create a stable foundation for bridges, structures and buildings by transferring the weight of the structure deeper into the ground. Piles are large columns generally made from reinforced concrete or steel. Inserting piles into the ground can take between one to two days to complete depending on the length and size. They can vary in length depending on the ground conditions and are driven or bored into the ground using a combination of cranes, piling rigs and vibrating hammers. An example of what this equipment looks like is provided on this page.

### Managing noise during piling

Piling can create increased levels of intermittent noise and vibration. In order to mitigate any levels issues, we will carry out noise and vibration monitoring throughout this work. We will also carry out noise mitigation, where possible, including shielding the work area and if the piling exceeds the noise guidelines we will make use of respite periods.

### Will this work affect nearby buildings?

We do not expect piling to have an impact on buildings around our work area, however piling can create vibration. As part of the project, all properties within 200 metres of vibration work are offered a property condition survey. This survey is carried out before work starts and includes an inspection of the interior and exterior of the property, including any external structures such as sheds, driveways, pathways, swimming pools, dams, fences and retaining walls. In the unlikely event that damage does occur, the survey can help demonstrate if this was a result of activities in the area. Most of the property conditions surveys for the upgrade have already been completed and a copy of the survey provided to landowners.

## Innovation – Yellow line trial, Woolgoolga to Ballina

To improve the safety of road users and workers we are trialling a number of new ways to guide people through work zones and increase awareness of changed traffic conditions and speed limits. We are doing this because we understand changes to the road environment during construction change your experience of your journey.

If you are travelling south on the Pacific Highway and cross the Harwood Bridge you will enter the yellow line trial. The yellow lines begin on the southern side of the bridge near the Yamba turnoff. The yellow lines continue for about 1.2 kilometres and signs have been installed to let road users know when they are entering and exit the trial.

Yellow lines will replace white lines at a number of temporary work zones near the existing highway to provide better guidance through work zones and raise awareness of changed conditions. We need your feedback about travelling through the yellow line trial to help us understand if you think they are effective. To be part of this important safety initiative please complete our five minute survey [www.surveymonkey.com/r/yellow\\_line\\_trial](http://www.surveymonkey.com/r/yellow_line_trial) or visit [www.rms.nsw.gov.au/W2B](http://www.rms.nsw.gov.au/W2B)



For more information about the project, please contact us:

**T** 1800 778 900 (toll free)

**E** [W2B@pacificcomplete.com.au](mailto:W2B@pacificcomplete.com.au)

**W** [www.rms.nsw.gov.au/W2B](http://www.rms.nsw.gov.au/W2B)

**We thank you for your patience during this important work.**

**Privacy** Roads and Maritime Services ("RMS") is subject to the *Privacy and Personal Information Protection Act 1998* ("PIIP Act") which requires that we comply with the Information Privacy Principles set out in the PIIP Act. All information in correspondence is collected for the sole purpose of assisting in the assessment of this proposal/ delivering this project. The information received, including names and addresses of respondents, may be published in subsequent documents unless a clear indication is given in the correspondence that all or part of that information is not to be published. Otherwise RMS will only disclose your personal information, without your consent, if authorised by the law. Your personal information will be held by RMS at 76 Victoria St, Grafton NSW. You have the right to access and correct the information if you believe that it is incorrect.



This document contains important information about public transport projects in your area. If you need help understanding this information, please contact the Translating and Interpreting Service on **131 450** and ask them to call us on **1800 703 457**. The interpreter will then assist you with translation.



May 2017 RMS 17.245

## How this work may affect you

All work for the upgrade is regulated by a construction environmental management plan (CEMP) which is approved by the Department of Planning and Environment.

The CEMP has strict conditions about managing the project's impact on the environment. We will try to minimise impacts to residents during this work. Access to residents' properties will be maintained and traffic control will be in place where required.

### Information for marine users

A channel will remain opened at all times for marine users. Marine operators are advised to use care navigating near the work and reduce speed to four knots when within 100 metres of the work area.

### Changed traffic conditions

There will be some temporary traffic changes while this work is carried out. Reduced speed limits and lane closures may be in place for access and may affect travel times. You may also notice some changes in area during the work including increased vehicle and truck movements as well as project team members on site. Please keep to speed limits and follow the direction of traffic controllers and signs.

For the latest traffic updates call 132 701, visit [livetraffic.com](http://livetraffic.com) or download the Live Traffic NSW App.

### Work hours

Typically work will be carried out between 7am and 6pm, Monday to Friday and 8am to 5pm on Saturday if required. In areas where residents live more than 200 metres from the project boundary, extended work hours from 6am to 7pm weekdays are allowed. Nearby residents will be notified at least five working days in advance of any activities scheduled outside of these working hours.



Transport  
Roads & Maritime  
Services