



APPENDIX B8

Ancillary Facilities Management Plan

Whytes Lane to Pimlico Road Early Works – Wave 2

Woolgoolga to Ballina Pacific Highway Upgrade

OCTOBER 2015

Document control

File name	05-A1-00-B8_W2B Wave2_Appendix B8_Rev6
Report name	Whytes Lane to Pimlico Road Early Works – Wave 2 Ancillary Facilities Management Plan
Revision number	6

Plan approved by:

[signed]

Name

Contractor PM

[signed]

Name

Contractor EM

[signed]

Name

Roads and Maritime
representative

Revision history

Revision	Date	Description	Approval
0	05/07/2015	Initial for Client Review	Carly McCormack - SMEC
1	13/07/2015	For RMS Review	Ryan Buckley – SEE Civil
2	10/08/2015	For RMS Review	Ryan Buckley – SEE Civil
3	30/08/2015	For Agency Review	Ryan Buckley – SEE Civil
4	07/09/2015	Incorporating DP&E Comments	Ryan Buckley – SEE Civil
5	16/09/2015	Incorporating OEH Comments	Ryan Buckley – SEE Civil
6	20/10/2015	For Approval	Ryan Buckley – SEE Civil

Distribution of controlled copies

Copy no.	Issued to	Version
1		
2		
3		
4		
5		

Contents

1	Introduction.....	1
1.1	Context.....	1
1.2	Background.....	1
1.3	Environmental management systems overview.....	3
2	Purpose and objectives.....	5
2.1	Purpose.....	5
2.2	Objectives.....	5
2.3	Targets.....	5
3	Environmental requirements.....	6
3.1	Relevant legislation and guidelines.....	6
4	Ancillary facility detail.....	14
4.1	Description.....	14
5	Environmental aspects and impacts.....	16
5.1	Construction activities, site establishment and decommissioning.....	16
5.2	Impacts.....	16
6	Compliance management.....	17
6.1	Compliance with the locational and environmental criteria.....	17
6.2	Roles and responsibilities.....	17
6.3	Training.....	17
6.4	Monitoring and inspections.....	17
6.5	Auditing.....	17
6.6	Reporting.....	18
7	Environmental mitigation and management measures.....	20
8	Review and improvement.....	24
8.1	Continuous improvement.....	24
8.2	AFMP update and amendment.....	24

Tables

Table 3-1 Conditions of Approval relevant to the AFMP	7
Table 4-1 Timing for Establishment and Decommissioning of Ancillary Facility Site	14
Table 4-2 Construction access points	14
Table 4-3 Local roads located near the Project	14
Table 4-4 Existing traffic conditions.....	14
Table 6.1: Compliance with the locational and environmental criteria.....	19
Table 7-1 Management and mitigation measures.....	21

Figures

Figure I-1 Constraints Map for ancillary facilities section 11 sites 1a and 1b.....	2
Figure I-2 Constraints Map for ancillary facilities section 11 site 2.....	3

Appendices

Appendix A <i>Minor Consistency Review: Ancillary Facility – Main Compound Establishment</i>	
Appendix B <i>Sample Ancillary Facility Toolbox Talk</i>	

Glossary / Abbreviations

CEMP	Construction Environmental Management Plan
CHMP	Construction Heritage Management Plan
CoA	Condition of approval
Council	Ballina Shire Council
DP&I	Former NSW Department of Planning and Infrastructure (now DP&E)
DP&E	NSW Department of Planning and Environment
EIS	Woolgoolga to Ballina Pacific Highway Upgrade Environmental Impact Statement (December, 2012)
EPA	NSW Environment Protection Authority
EP&A Act	<i>NSW Environmental Planning and Assessment Act 1979</i>
EPBC Act	<i>Commonwealth Environmental Protection and Biodiversity Conservation Act 1999</i>
EWMS	Environmental Work Method Statements
Minister, the	NSW Minister for Planning
NPW Act	<i>NSW National Parks and Wildlife Act 1974</i>
OEH	NSW Office of Environment and Heritage
PoEO Act	<i>NSW Protection of the Environment Operations Act 1997</i>
Project, the	Whytes Lane to Pimlico Road Early Works – Wave 2
Secretary	Secretary of the Department of Planning and Environment
SEE Civil	SEE Civil Pty Ltd
SPIR	Woolgoolga to Ballina Pacific Highway Upgrade Submissions Preferred Infrastructure Report (November, 2013)
RMS, Roads and Maritime Services	NSW Roads and Maritime

1 Introduction

1.1 Context

This Ancillary Facility Management Plan (AFMP or Plan) forms part of the Construction Environmental Management Plan (CEMP) for the Whytes Lane to Pimlico Road Early Works – Wave 2 (the Project).

This AFMP has been prepared to address the requirements of the Minister's Conditions of Approval (CoA) and the updated mitigation measures listed in the Pacific Highway Upgrade Woolgoolga to Ballina Submissions/Preferred Infrastructure Report (SPIR), as well as all applicable legislation.

The Project is located within Section 11 of the Woolgoolga to Ballina Pacific Highway Upgrade. Wave 2 of the Early Works (soft soil treatments) is to enable the future upgrade of the section of HW10 Pacific Highway, Woolgoolga to Ballina. The Project specifically covers the Soft Soil Site 11 – between Whytes Lane and Pimlico Road (W2P) (STN 159,900 to STN 163,800). The map of the Project area can be found in Appendix A5 of the CEMP.

1.2 Background

Potential ancillary facility sites were identified and assessed for the entire Woolgoolga to Ballina Pacific Highway Upgrade during preparation of the EIS. Further design changes and assessment was undertaken for ancillary facility sites during preparation of the SPIR.

As documented in the SPIR, an assessment of the ancillary facilities was undertaken against the locational criteria in the then Department of Planning and Infrastructure's draft standard conditions for state significant linear infrastructure. The standard conditions include criteria for the location of ancillary facilities, as follows:

- a. Be located more than 50 metres from a waterway.
- b. Be located within or adjacent to land where the state significant infrastructure is being carried out.
- c. Have ready access to the road network.
- d. Be located to minimise the need for heavy vehicles to travel through residential areas.
- e. Be sited on relatively level land.
- f. Be separated from nearest residences by at least 200 metres (or at least 300 metres for a temporary batching plant).
- g. Not require vegetation clearing beyond that already required by the state significant infrastructure.
- h. Not impact on heritage items (including areas of archaeological sensitivity) beyond those already impacted by the state significant infrastructure.
- i. Not unreasonably affect the land use of adjacent properties.
- j. Be above the 20 ARI flood level unless a contingency plan to manage flooding is prepared and implemented.
- k. Provide sufficient area for the storage of raw materials to minimise, to the greatest extent practical, the number of deliveries required outside standard construction hours.

These standard ancillary facilities locational criteria supersede the criteria that were identified in the EIS. Where feasible and unless otherwise approved by the Secretary, Roads and

Maritime and its contractors will adopt these criteria for the ancillary sites identified in the SPIR and the report titled *Woolgoolga to Ballina Pacific Highway Upgrade – Ancillary descriptions and impact assessment* (RMS, 2013). Any additional ancillary sites identified hereafter will be subject to the locational criteria in CoA B73.

The Project includes two ancillary facility site locations. Site 1 (four areas) is located in the southern section of the Project area, in the vicinity of Whytes Lane (Section 11 site 1a and site 1b (3 areas)), refer Figure 1-1. A second site is located in the northern section of the Project area (Section 11 site 2), refer Figure 1-2.

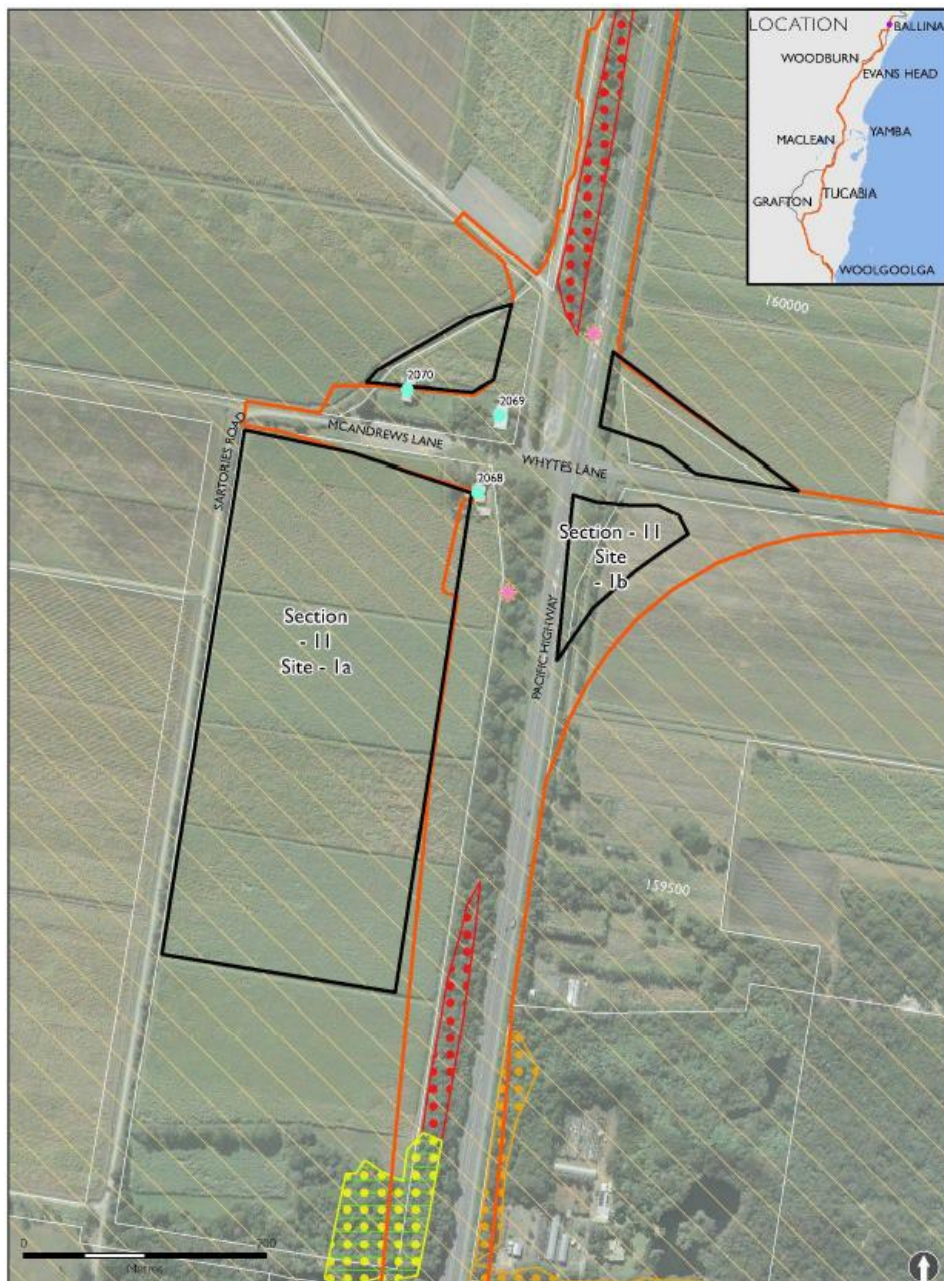


Figure 1-1 Constraints Map for ancillary facilities section 11 sites 1a and 1b

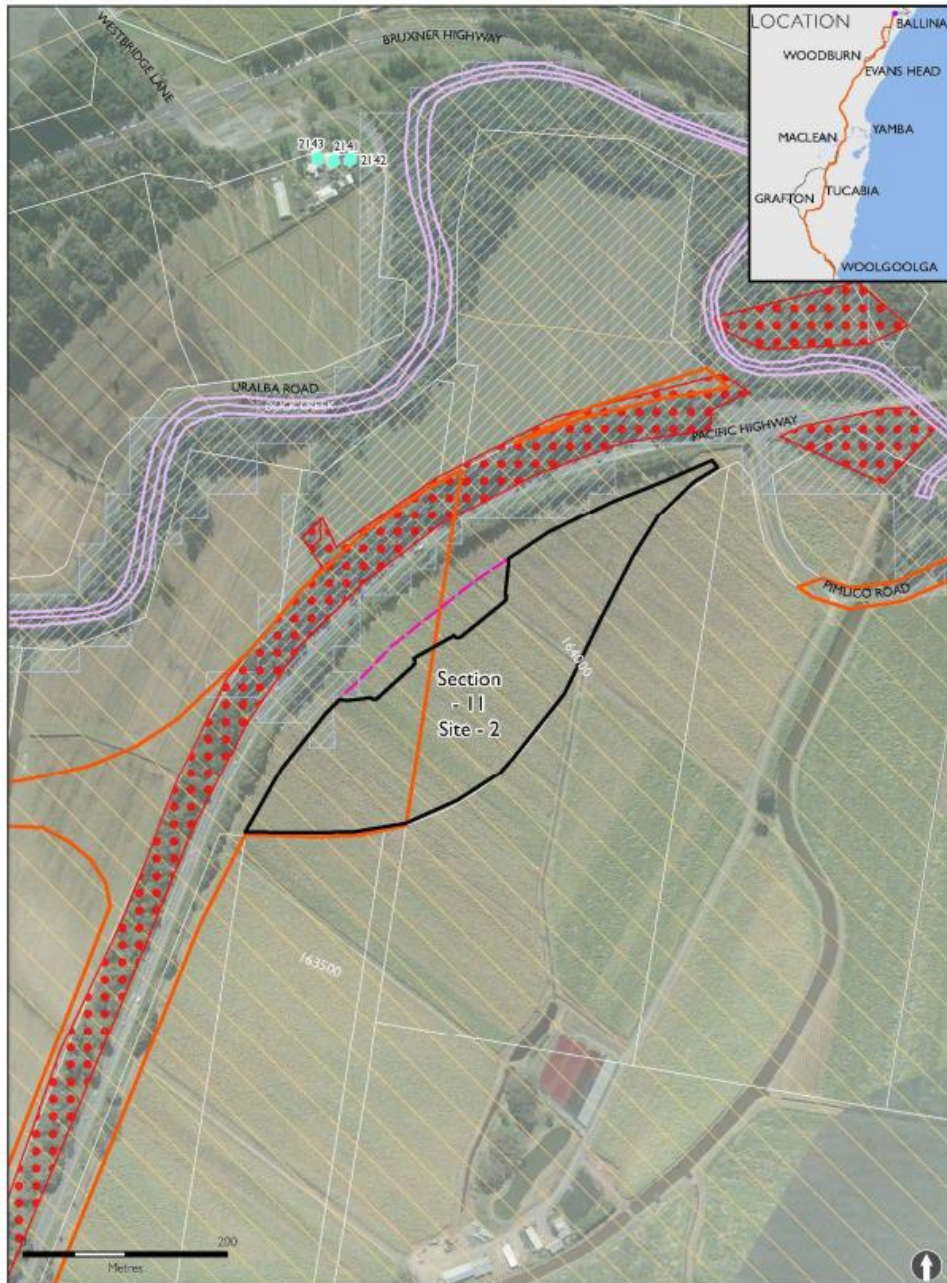


Figure 1-2 Constraints Map for ancillary facilities section 11 site 2

The EIS identified potential impacts in regards to ancillary facilities. Additional management measures were provided within the SPIR and the *Woolgoolga to Ballina Pacific Highway Upgrade – Ancillary descriptions and impact assessment* (RMS, 2013). This AFMP documents the overarching management and mitigation measures for the establishment and operation of all ancillary facility sites for the Project. Detail and assessment of the proposed individual ancillary facility site locations are assessed through the Minor Consistency Review process, refer to appendices. As per CoA D21, the AFMP is approved by the Environmental Representative.

1.3 Environmental management systems overview

The overall Environmental Management System for the Project is described in the Construction Environmental Management Plan (CEMP).

This AFMP is part of SEE Civil's environmental management framework for the Project, as described in Section 4.1 of the CEMP. Management measures identified in this Plan and the appendices are to be incorporated into site or activity specific Environmental Work Method Statements (EWMS).

EWMSs will be developed and signed off by environment and management representatives prior to associated works being undertaken. Construction personnel will be required to undertake works in accordance with the identified mitigation and management measures.

Used together, the CEMP, strategies, procedures and EWMS clearly identify required environmental management actions for reference by SEE Civil's personnel and contractors.

The review and document control processes for this Plan are described in Section 10 of the CEMP.

2 Purpose and objectives

2.1 Purpose

The purpose of this Plan is to describe how SEE Civil proposes to develop and manage ancillary facility sites during construction of the Project.

2.2 Objectives

The key objective of this Plan is to ensure that impacts to the environment are minimised and within the scope permitted by the planning approval. To achieve this objective, SEE Civil will undertake the following:

- Ensure appropriate controls and procedures are implemented during construction activities to avoid or minimise real and potential impacts to the environment and sensitive receivers along the Project corridor.
- Ensure appropriate measures are implemented to address the relevant CoA outlined in Table 3.1 and other specific commitments detailed in the EIS.
- Ensure appropriate measures are implemented to comply with all relevant legislation and other requirements as described in Section 3.1 of this Plan.

2.3 Targets

The following targets have been established for the management of impacts resulting from operation of the ancillary facility sites during the Project:

- Ensure full compliance with the relevant legislative requirements and CoA.
- Minimise any impacts on the surrounding sensitive receivers.

3 Environmental requirements

3.1 Relevant legislation and guidelines

3.1.1 Legislation

Legislation relevant to the management of ancillary facilities includes:

- *Environmental Planning and Assessment Act 1979* (EP&A Act).
- *Protection of the Environment Operations Act 1997*.
- Protection of the Environment Operations (General) Regulation 2009.
- *Environmentally Hazardous Chemicals Act, 1985*.
- *Pesticides Act 1999*.
- *Contaminated Land Management Act 1997*.

Relevant provisions of the above legislation are explained in the register of legal and other requirements included in Appendix A1 of the CEMP.

3.1.2 Guidelines and standards

The main guidelines, specifications and policy documents relevant to this Plan include:

- *RMS QA Specification G36 – Environmental Protection* (Management System).

3.2 Minister’s Conditions of Approval

The CoA relevant to this Plan are listed in Table 3-1. A cross reference is also included to indicate where the condition is addressed in this Plan or other Project management documents.

Table 3-1 Conditions of Approval relevant to the AFMP

CoA No.	Condition Requirements	Document Reference
Definitions	<p>Ancillary Facility:</p> <p><i>Temporary facility for construction, including for example an office and amenities compound, construction compound, batch plant (concrete or bitumen), material crushing and screening, materials storage compound, maintenance workshop, testing laboratory or material stockpile area.</i></p> <p><i>Note: Where a stockpile management protocol has been approved by the Secretary for the SSI, material stockpile areas are not considered to be ancillary facilities</i></p>	
B31	<p>The hydrological and flooding impacts resulting from the SSI are to be assessed during detailed design against the 'Design Objectives for Flood Management' described in Section 2.1 of the EIS Working Paper – Hydrology and Flooding. This shall include assessment against the 'Flood Management Objectives' and the 'Other Flood Impact Considerations' as well as the other requirements of this section of the EIS. The hydrology assessment shall include the refinement of or development of new flood models (where required) for the 14 catchments investigated during the EIS. These models shall be operated for the same design floods considered in the EIS, as well as the 2000 year ARI and the probable maximum flood (PMF) design events.</p>	For reference.
B33	<p>Where the objectives and considerations referred to in Condition B31 cannot be complied with, the Applicant shall:</p> <ul style="list-style-type: none"> a) achieve compliance through modified embankment or drainage design. This might include new or duplicated drainage structures designed to minimise afflux and other impacts to waterways that traverse the road alignment, to the greatest extent practicable; or b) achieve an acceptable level of mitigation of impacts through alternative design measures (e.g. raised access tracks) in consultation with the affected land-owner; or 	Relevant for any new ancillary facilities site(s) not previously assessed.

CoA No.	Condition Requirements	Document Reference
	c) reach agreement with affected landowners on impacts to property.	
B73	<p>The sites for ancillary facilities that are associated with the construction of the SSI and that have not been identified and assessed in the documents listed in condition A2 shall:</p> <ul style="list-style-type: none"> a) be located more than 50 metres from a waterway (100 metres for a State Environmental Planning Policy No. 14 wetland or known Oxleyan Pygmy Perch habitat waterway); b) not impact on connectivity structures or vegetation leading to a connectivity structure; c) be located within or adjacent to the SSI boundary; d) have ready access to the road network; e) be located in areas of low ecological significance and require no clearing of native vegetation; f) be located more than 50 metres from threatened species and endangered ecological communities and their habitats; g) be located on relatively level land; h) be separated from the nearest residences by at least 200 metres (or at least 300 metres for a temporary batching plant) and comply with construction noise management levels at sensitive receivers; i) be above the 20 year ARI flood level unless a contingency plan to manage flooding is prepared and implemented; j) have minor impacts on flood storage and not result in obstruction of floodplain flow or blockage of culverts and drains; k) not unreasonably affect the land use of adjacent properties; l) (operate in accordance with the construction hours set out in conditions B15 and B16; m) provide sufficient area for the storage of material to minimise, to the greatest extent practical, the number of deliveries required outside standard construction hours; and n) be located in areas of low heritage conservation significance (including areas identified as being of Aboriginal cultural value) and not impact on heritage sites beyond those already impacted by the SSI. 	<p>Relevant for any new ancillary facilities site(s) not previously assessed.</p> <p>All proposed sites have been assessed in <i>Woolgoolga to Ballina Pacific Highway Upgrade - Ancillary descriptions and impact assessment</i> (RMS, 2013).</p> <p>A further Consistency Review is provided in the appendices.</p>

The Applicant shall undertake an assessment of the facility against the above criteria in consultation with the relevant public authority(s) and the relevant council. The assessment shall be approved by the Environmental Representative and included in the Ancillary Facilities Management Plan required under condition D21.

B74

Ancillary facilities that have not been previously identified and assessed in the documents listed in condition A2, and do not meet the criteria set out under condition B73, shall be approved by the Environmental Representative prior to its establishment. In obtaining this approval, the Applicant shall consult with the relevant public authority(s) and the relevant council, and demonstrate to the satisfaction of the Environmental Representative, how the potential environmental impacts can be mitigated and managed to acceptable standards. The outcomes of the assessment shall be documented in a report and include, but not necessarily be limited to:

- a) details on the site location and access arrangements;
- b) a description of the activities to be undertaken;
- c) outcomes of the assessment of the site against the locational criteria set out in condition B73;
- d) an assessment of the environmental impacts on the site and the surrounding environment, including, but not limited to noise, vibration, air quality, traffic and access during site establishment and operation, flora and fauna, heritage, erosion and sedimentation, water quality and light spill;
- e) details of the mitigation, monitoring and management procedures specific to the ancillary facility that would be implemented to minimise environmental impacts; and
- f) demonstrated overall consistency with the approved SSI (including impacts identified in the documents listed in condition A2).

A copy of the report shall be included in the Ancillary Facilities Management Plan.

All proposed sites have been assessed in *Woolgoolga to Ballina Pacific Highway Upgrade - Ancillary descriptions and impact assessment* (RMS, 2013)

A further Consistency Review is provided in the appendices

CoA No.	Condition Requirements	Document Reference
B75	Notwithstanding condition B74, ancillary facilities that that have not been previously identified and assessed in the documents listed in condition A2 and result in additional impacts to biodiversity, heritage, flooding and noise beyond those approved for the SSI, shall be approved by the Secretary prior to their establishment. In order to obtain this approval, the Applicant shall undertake an assessment of the ancillary facility in accordance with condition B74 and forward a copy of the assessment report to the Secretary, as part of the approval submission, at least one month prior to the establishment of the facility.	All proposed sites have been assessed in <i>Woolgoolga to Ballina Pacific Highway Upgrade - Ancillary descriptions and impact assessment</i> (RMS, 2013) A further Consistency Review is provided in the appendices
B76	The land on which ancillary facilities are located shall be rehabilitated to at least their pre-construction condition or better, unless otherwise agreed by the landowner.	Detailed in Consistency Review provided in the appendices
B77	Where changes are made to the boundary or use of an ancillary facility, including facilities identified in the documents listed in condition A2, the Applicant shall assess the facility against the criteria set out in condition B73. If the ancillary facility site: <ul style="list-style-type: none"> a) does not meet the criteria set out under condition B73 the Applicant shall seek the approval of the Environmental Representative in accordance with condition B74; or b) results in impacts to biodiversity, heritage, flooding and noise beyond those approved for the SSI, the Applicant shall seek the approval of the Secretary in accordance with condition B75. <p>The relevant approval shall be obtained prior to the establishment of the ancillary facility.</p>	Detailed in Consistency Review provided in the appendices

CoA No.	Condition Requirements	Document Reference
B78	<p>The Applicant may undertake archaeological investigations at ancillary sites that do not meet the criterion set out in condition B73, where this is required to assess the potential Aboriginal and non-Aboriginal archaeological impacts of the ancillary facility on previously unidentified heritage sites, provided:</p> <ul style="list-style-type: none"> a) any archaeological investigations undertaken under this condition shall be consistent with the requirements in condition B44 for Aboriginal heritage and condition B50 for non-Aboriginal heritage and with the Construction Heritage Management Plan or a methodology prepared to the satisfaction of the Secretary in consultation with EPA; and b) the results of any relevant archaeological investigations undertaken under this condition shall be consistent with the reporting requirements of condition B45 for Aboriginal heritage and condition B50 for non-Aboriginal heritage and be described in the assessment of the ancillary facility required under conditions B74 and B75. 	<p>Refer to CHMP (Appendix B5 to CEMP) and Consistency Review provided in the appendices to this AFMP.</p>
D13	<p>The Applicant shall prepare and implement a Hydrological Mitigation Report for properties where flooding and/or hydrological impacts are predicted to exceed the relevant flood management objective in the documents listed in condition A2 as a result of the SSI. The Report shall be prepared by a suitably qualified expert and be based on detailed surveys (e.g. floor levels) and associated assessment of potentially flood affected properties in the Corindi, Clarence and Richmond river floodplains. The Report shall:</p> <ul style="list-style-type: none"> a) identify properties in those areas likely to have an increased/exacerbated impact and detail the predicted impact; The types of impacts to be considered include all those examined in the EIS including but not limited to changes in flood levels and velocities, alteration to drainage, reduction in flood evacuation access or capability, impacts on infrastructure, impacts on stock and agriculture, and impacts to the environment; b) identify mitigation measures to be implemented to address these impacts; c) identify measures to be implemented to minimise scour and dissipate energy at locations where flood velocities are predicted to increase as a result of the SSI and cause localised soil erosion and/or pasture damage; d) be developed in consultation with the relevant council, NSW State Emergency Service and 	<p>All proposed sites have been assessed in <i>Woolgoolga to Ballina Pacific Highway Upgrade - Ancillary descriptions and impact assessment</i> (RMS, 2013)</p>

CoA No.	Condition Requirements	Document Reference
	<p>directly-affected landowners;</p> <p>e) identify operational and maintenance responsibilities for items (a) to (c) inclusive; and</p> <p>f) refer to the assessments described in conditions B31 and B32.</p> <p>The report may be submitted in stages to suit the staged construction of the SSI.</p> <p>Construction shall not commence within those areas likely to have altered flood conditions until such time as works identified in the hydrological mitigation report have been completed, unless otherwise agreed by the Secretary.</p>	
D21	<p>The Applicant shall prepare and implement an Ancillary Facilities Management Plan to detail the management of ancillary facilities associated with the SSI. The Plan shall be prepared in consultation with the EPA, OEH, DPI (Fisheries), DoE, and the relevant council, and to the satisfaction of the Environmental Representative, and shall include, but not necessarily be limited to:</p> <ul style="list-style-type: none"> (a) a description of the ancillary facility (including a site layout plan), its components and details of the existing environment on and in the vicinity of the site; (b) details of the activities to be carried out at the facility, including the hours of operation, staging of operation and predicted date of commissioning; (c) a description of the plant, equipment and materials to be used and/or stored on the site, including dangerous and hazardous goods; (d) details of the light and heavy construction vehicle movements to and from each facility, including site access and route(s) to be used during the establishment and operation of the facility, and an assessment of potential construction traffic impacts on the local road network and access tracks; (e) a summary of the potential environmental impacts associated with the construction and operation of the facility; (f) demonstrate compliance with the locational and environmental criteria in condition Error! Reference source not found.Error! Reference source not found.—Error! Reference source not found.Error! Reference source not found.; (g) details of the mitigation, monitoring and management procedures specific to the facility that would be implemented to minimise environmental and amenity impacts or, where this is not possible, feasible and reasonable measures to offset these impacts; (h) a description of how the management and mitigation measures set out in the documents 	This Plan and Consistency Review provided in the appendices

CoA No.	Condition Requirements	Document Reference
---------	------------------------	--------------------

listed in condition **Error! Reference source not found.** will be implemented on the site, and if not, justification for such decisions particularly on those sites assessed as having a high risk of flood impacts;

- (i) an assessment of alternative site layouts where either noise management levels are predicted to be exceeded and acoustic treatment of residences is not proposed, or where such treatment is proposed (consequent to the operational impacts of the SSI) but will not be provided prior to establishment of an ancillary facility;
- (j) a cumulative noise impact statement for the ancillary facility addressing the worst-case cumulative noise impacts resulting from the concurrent operation of the site (including construction traffic movements to and from the site), nearby construction works within the SSI corridor and any other nearby construction activities associated with other road upgrade projects;
- (k) identification of the timing for the completion of activities at the facility and how the site will be decommissioned (including any necessary rehabilitation); and
- (l) mechanisms for the monitoring, review and amendment of this plan.

The plan shall be approved by the Environmental Representative prior to the establishment of the ancillary facilities described therein. In considering the approval of the plan, the Environmental Representative shall take into account the Applicant’s response to public authority and council comments on the plan.

The Applicant may prepare a separate plan for the facility or include multiple sites within a single or multiple management plans.

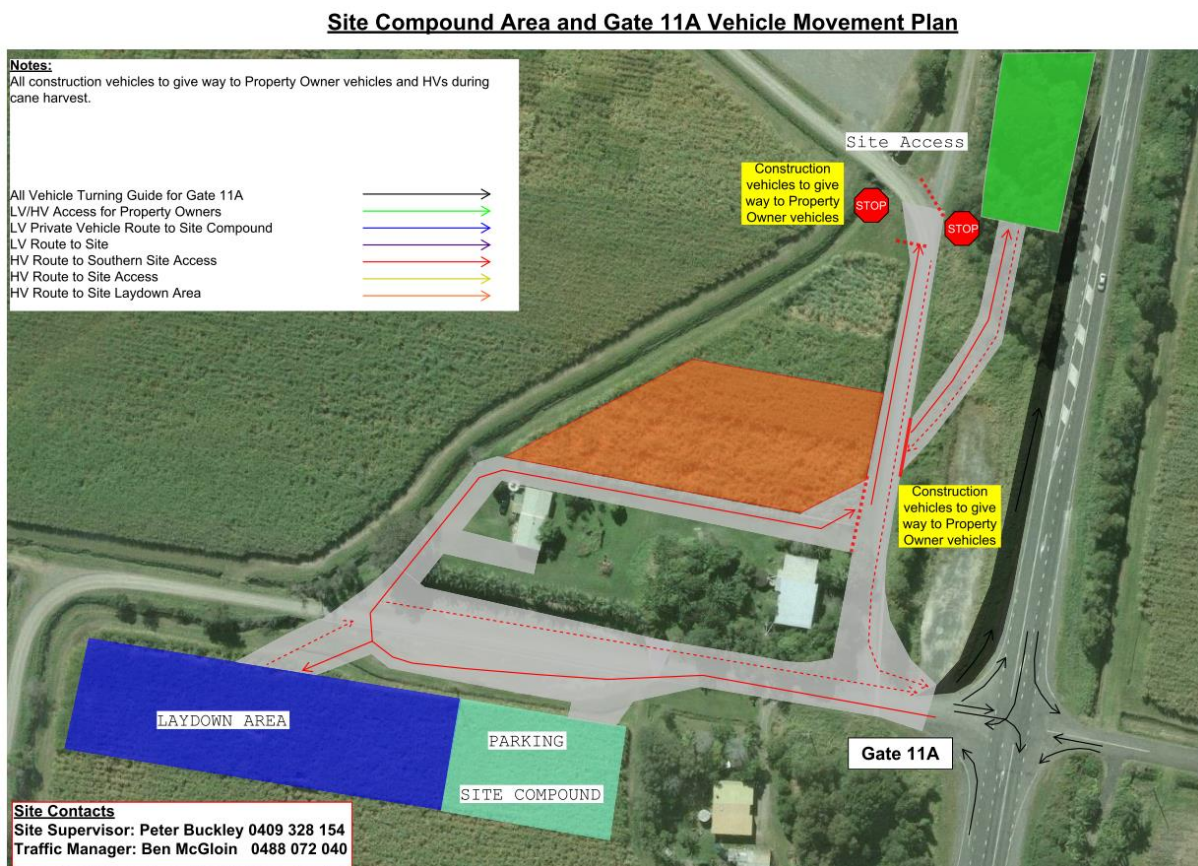
4 Ancillary facility detail

4.1 Description

Two ancillary facilities sites for the Project have been selected, as shown on Figure 1-1 and described below:

- Section 11 Site 1a – south of McAndrews Lane (Lot 5 DP 223267). This will be the main site compound and include project offices, materials and tool storage, heavy plant and equipment parking, car parking, welfare facilities and toilets.
- Section 11 Site 1b – north of McAndrews Lane and west of Whytes Lane (Lot 141 DP 755731). This site will contain storage areas and potential access road.

Both areas were assessed in the *Woolgoolga to Ballina Pacific Highway Upgrade - Ancillary descriptions and impact assessment* (RMS, 2013). The assessment and constraints map of sites 11-1a and 11-1b has been included as Figure 1-1. The detailed ancillary facilities site layouts for the Project are provided in the Minor Consistency Review (Appendix A to this Plan).



5 Environmental aspects and impacts

5.1 Construction activities, site establishment and decommissioning

Key aspects when establishing, operating and decommissioning the ancillary facility sites that could result in impacts to the environment include:

- Clearing of native vegetation (including habitat).
- Works around watercourses, including the cane drains.
- Noise impacts.
- Traffic impacts.
- Disturbance of soils, consequential erosion and the mobilisation of sediment.
- Use of chemicals / fuels (potential for spills).
- Dust generation.
- Generation of waste.
- Site clean-up and rehabilitation works.

Refer also to the Aspects and Impacts Register included in Appendix A2 of the CEMP.

5.2 Impacts

Likely and/or potential impacts associated with the establishment, operation and decommissioning of the ancillary facility sites include:

- Exposure of soils during vegetation clearing and earthworks, creating the potential for off-site transport of eroded sediments and pollutants.
- Sensitive area damage from inappropriate stockpiling activities.
- Disturbance of acid sulphate soils, creating the potential for oxidation of these soils and subsequent generation of acidic run-off.
- Contamination of soils, and surface and groundwater from accidental spills or oil leaks. This might include grease or fuel from machinery and vehicles, construction sites or compounds, or spills of other chemicals that may be used during the course of construction.
- Disturbance of unidentified contaminated land eg former cattle tick dip sites, or other pesticide/chemical concentrations in soil from historical land use practices, and subsequent generation of contaminated runoff.
- Dust deposition and noise impacts on sensitive receivers.
- Weed infestation from dispersion of seeds and so forth during clearing and access upgrading activities.
- Potential flooding impacts.

Relevant aspects and the potential for related impacts have been considered in a risk assessment documented in Appendix A2 of the CEMP. Chapter 6 provides a suite of mitigation measures that will be implemented to avoid or minimise those impacts.

6 Compliance management

6.1 Compliance with the locational and environmental criteria

Compliance with the locational and environmental criteria specific to the ancillary facilities sites is summarised in Table 6.1, and assessed further in the Consistency Reviews provided as appendices to this AFMP.

The proposed sites have been assessed in *Woolgoolga to Ballina Pacific Highway Upgrade - Ancillary descriptions and impact assessment* (RMS, 2013). Section 11 Site 1b met all standard conditions location criteria. Section 11 Site 1a required further assessment for potential impacts to Aboriginal archaeology. This assessment has been completed and is documented in the CHMP (Appendix B5 to the CEMP). Following this additional assessment, Section 11 Site 1a now also meets all standard conditions location criteria.

6.2 Roles and responsibilities

The SEE Civil Project Team's organisational structure and overall roles and responsibilities are outlined in Section 4.2 of the CEMP. All specific responsibilities for the implementation of environmental controls are detailed in the Section 6 of this Plan.

6.3 Training

All employees, contractors and utility staff working on site will undergo site induction training relating to the development and operation of ancillary facilities. The induction training will address elements related to facility operations including:

- Existence and requirements of this AFMP.
- Relevant legislation.
- Community expectations.
- Traffic and access.
- Noise minimisation.
- Dust management.

Further details regarding staff induction and training are outlined in Chapter 5 of the CEMP.

6.4 Monitoring and inspections

As detailed in Section 8.5 of the CEMP, monthly inspections of the site, including ancillary facilities, will occur for the duration of the project. The Environmental Site Representative will undertake these inspections and an ER Inspection Report will be provided to Roads and Maritime on a monthly basis.

Additional requirements and responsibilities in relation to monitoring and inspections are documented in Section 8.2 of the CEMP.

6.5 Auditing

Audits (both internal and external) will be undertaken to assess the effectiveness of environmental controls, compliance with this plan, CoA and other relevant approvals, licenses and guidelines.

Audit requirements are detailed in Section 8.3 of the CEMP.

6.6 Reporting

Reporting requirements and responsibilities are documented in Section 8.3 and 8.5 of the CEMP.

Table 6.1: Compliance with the locational and environmental criteria

Clause	Compliant (Y/N)
Condition B73	
The sites for ancillary facilities that are associated with the construction of the SSI and that have not been identified and assessed in the documents listed in condition A2 shall:	
(a) be located more than 50 metres from a waterway (100 metres for a State Environmental Planning Policy No. 14 wetland or known Oxleyan Pygmy Perch habitat waterway)	Y
(b) not impact on connectivity structures or vegetation leading to a connectivity structure	Y
(c) be located within or adjacent to the SSI boundary	Y
(d) have ready access to the road network	Y
(e) be located in areas of low ecological significance and require no clearing of native vegetation	Y
(f) be located more than 50 metres from threatened species and endangered ecological communities and their habitats	Y
(g) be located on relatively level land	Y
(h) be separated from the nearest residences by at least 200 metres (or at least 300 metres for a temporary batching plant) and comply with construction noise management levels at sensitive receivers	Y
(i) be above the 20 year ARI flood level unless a contingency plan to manage flooding is prepared and implemented	Y
(j) have minor impacts on flood storage and not result in obstruction of floodplain flow or blockage of culverts and drains	Y
(k) not unreasonably affect the land use of adjacent properties	Y
(l) operate in accordance with the construction hours set out in conditions B15 and B16	Y
(m) provide sufficient area for the storage of material to minimise, to the greatest extent practical, the number of deliveries required outside standard construction hours; and	Y
(n) be located in areas of low heritage conservation significance (including areas identified as being of Aboriginal cultural value) and not impact on heritage sites beyond those already impacted by the SSI.	Y
The Applicant shall undertake an assessment of the facility against the above criteria in consultation with the relevant public authority(s) and the relevant council. The assessment shall be approved by the Environmental Representative and included in the Ancillary Facilities Management Plan required under condition D21.	

7 Environmental mitigation and management measures

A range of environmental requirements are identified in the various environmental documents, including the EIS, Submissions / Preferred Infrastructure Report, Statement of Commitments, supplementary assessments, Conditions of Approval and Roads and Maritime documents, and from recent experience on similar road projects. Specific measures and requirements to address issues associated with the establishment, operation and decommissioning of the ancillary facility sites are outlined in Table 7-1.

Table 7-1 Management and mitigation measures

ID	Measure / Requirement	When to implement	Responsibility	Reference
Hydrology and flooding				
HF01	<p>The potential impacts of ancillary facilities and haul roads on cane drains will be further investigated and addressed when ancillary facility locations are confirmed. The design of these ancillary facilities will be developed in consultation with relevant cane industry stakeholders, affected landowners, and in accordance with the following principles:</p> <ul style="list-style-type: none"> • Maintain conveyance characteristics of existing cane drains. • Provide adequate capacity in temporary drainage to prevent blockages. 	Pre-construction and construction	Environment Manager / Superintendent / Foreman	SPIR (H15)
HF02	Recommendations made in Table 8-8 of Working paper – Hydrology and flooding to minimise the flood impacts of ancillary facilities will be considered in the final location and layout of ancillary facilities.	Pre-construction	Construction Manager / Environment Manager	SPIR (HF22)
Soil, sediments and water				
SSW03	<p>At ancillary facilities, management of runoff and spills will include:</p> <ul style="list-style-type: none"> • Restricting vehicle movements to designated pathways where feasible. • Paving areas that will be exposed for extended periods, such as car parks and main access roads, where reasonable and feasible. • Diverting off-site runoff around sites where required. • Locating chemical or other hazardous material storage areas away from areas of known near surface groundwater supplies, in areas where the water table is more than five metres below the surface; otherwise, areas be lined if they are to be located over a shallow groundwater source less than two metres deep. 	Pre-construction / Construction	Superintendent / Foreman / Environment Manager	SPIR (SSW38)
Biodiversity				
B04	Where feasible and reasonable, native vegetation forming part of the identified widened medians will not be disturbed for any ancillary construction purpose including access tracks, stockpiles, materials laydown and ancillary facilities.	Construction	Construction Manager / Environment Manager	SPIR (B9)
B05	The pre-clearing process will be consistent with Roads and Maritime Biodiversity Guidelines: Protecting and Managing Biodiversity on RTA projects (RTA, 2011a) and include:	Pre-construction / Construction	Construction Manager / Environment Manager	SPIR (B23)

ID	Measure / Requirement	When to implement	Responsibility	Reference
	<ul style="list-style-type: none"> • Pre-clearing surveys by an experienced ecologist for large bird nests, particularly for listed species such as the Black-necked Stork, Eastern Osprey, Square-tailed Kite and Little Eagle during the nesting and breeding season (July to December) and tree roosting (eg Southern Myotis) or cave dwelling bats in trees or existing culvert/bridge structures. If the species is present in or directly adjacent to the project footprint (including ancillary facilities), measures to manage any species be considered, if required. • Mapping the location of any threatened flora and/or fauna species, Threatened Ecological Communities and habitat. • Construction traffic will be restricted to defined access tracks, fenced prior to the start of construction and maintained until construction is complete. 			
B06	Stockpiles would be located above the 1:100 year flood level with appropriate management control measures in place such as bunding.	Construction	Construction Manager / Environment Manager	SPIR (B48)
B07	Ancillary facilities will be located in cleared or sparsely treed portions of the ancillary facility sites, and avoid unnecessary clearing of native vegetation.	Pre-construction / Construction	Construction Manager / Environment Manager	SPIR (B51) (
Urban design, landscape character and visual impact				
UD08	<p>Typical landscape treatments for ancillary facilities in agricultural areas will include:</p> <ul style="list-style-type: none"> • Considering returning remnant agricultural land to agricultural uses. • Providing screen planting. • Reinstating riparian vegetation through ancillary facilities, where practicable, in the open landscape. • Considering the visual landscape at each ancillary facility and considering restoration of important forest vegetation to prominent ridge lines or other landscape elements where feasible and reasonable. • Re-grading disturbed areas to achieve a sustainable and functional landform. • Stabilising all surfaces in accordance with good engineering and environmental practice. 	Pre-construction / Construction	Construction Manager / Environment Manager	SPIR (UD9) Good practice

ID	Measure / Requirement	When to implement	Responsibility	Reference
Aboriginal Heritage				
AH09	If any part of the project (such as an ancillary facility) is located in an area which has not been subject to Aboriginal heritage field survey and assessment, an assessment will be undertaken before that part of the project proceeds.	Pre-construction	Construction Manager / Environment Manager	SPIR (AH3)
AH10	Ancillary facility - Section 11, Site 1a: <ul style="list-style-type: none"> The ground will be inspected for any Aboriginal archaeological material by an archaeologist and registered Aboriginal stakeholders during and following clearing activities. Any archaeological material will be recorded, removed from the Aboriginal archaeological site, and a suitable location for the material determined in consultation with the stakeholders. An AHIMS record will be submitted for any finds and any locations where the material is to be stored – unless reburied on or near Aboriginal archaeological site, establishing a care agreement will also be necessary. 	Pre-construction	Construction Manager / Environment Manager	SPIR (AH14v)
Non-Aboriginal (Historical) Heritage				
HH11	Where local or state significant heritage items not previously identified are identified on an ancillary site and use of the site will impact on the heritage significance of the item, the site will not be used for ancillary facilities.	Pre-construction	Construction Manager / Environment Manager	SPIR (HH7)
HH12	Any new ancillary facility and spoil placement locations not identified as part of this EIS will require a non-Aboriginal heritage assessment, with a database search and site walkover to identify any potential heritage items. If items are found, HH4, HH7-HH8 (SPIR) will be followed.	Pre-construction	Construction Manager / Environment Manager	SPIR (HH9)
Land use and property				
LU13	Ongoing consultation will be undertaken with directly affected property owners during the detailed design phase to identify measures to mitigate potential impacts on the use and viability of land. This will relate to matters such as adjustments to fencing, access, farm infrastructure and relocation of impacted ancillary structures, as required.	Pre-construction	Construction Manager / Environment Manager	SPIR (LU2)

8 Review and improvement

8.1 Continuous improvement

Continuous improvement of this plan will be achieved by the ongoing evaluation of environmental management performance against environmental policies, objectives and targets for the purpose of identifying opportunities for improvement.

The continuous improvement process will be designed to:

- Identify areas of opportunity for improvement of environmental management and performance.
- Determine the cause or causes of non-conformances and deficiencies.
- Develop and implement a plan of corrective and preventative action to address any non-conformances and deficiencies.
- Verify the effectiveness of the corrective and preventative actions.
- Document any changes in procedures resulting from process improvement.
- Make comparisons with objectives and targets.

8.2 AFMP update and amendment

The processes described in Chapter 8 and Chapter 9 of the CEMP may result in the need to update or revise this Plan. This will occur as needed.

Any revisions to the AFMP will be in accordance with the process outlined in Section 1.6 of the CEMP.

A copy of the updated plan and changes will be distributed to all relevant stakeholders in accordance with the approved document control procedure – refer to Section 10.2 of the CEMP.



Appendix A - Minor Consistency Review

Ancillary Facility – Main Compound Establishment



Appendix B - Sample Ancillary Facility Toolbox Talk

Appendix B: Sample Ancillary Facility Toolbox Talk

The objective of this toolbox is to ensure that all Project personnel are aware of their responsibilities and the environmental work method to be followed during site compound establishment.

- Work hours are Weekdays 7:00am to 6:00pm and Saturday 8:00am to 5:00pm. No work outside of these hours without prior approval from the Environmental Manager
- Relevant Sensitive area plans reviewed and discussed
- Public complaints to be communicated to the Community Relations Team as soon as possible.
- Know the location of the nearest sensitive noise receivers.
- Erosion and sediment controls to be installed as per ESCP, Environmental Coordinator to check.
- Report any nuisance, sick or killed fauna to the Environment Manager who will implement Fauna Handling and Rescue Procedure.
- Access roads will have stabilised access and egress points where they meet public roads.
- Clearing limits will be clearly delineated by survey team, ecologist will do pre-clearing survey, Environmental Coordinator to sign off prior to clearing. Discuss in toolbox the different boundaries and flagging
- Do not enter No-Go areas as they protect significant plant communities
- Do not enter No-Go areas without approval from the Environment Manager.
- Areas infested with noxious weeds will be clearly marked and signposted. These areas are to be avoided. Should entry be required into these areas, consult with the Environment Coordinator prior to entry.
- Discuss relevant sections of the Ancillary Facilities Management Plan as required for the specific works
- Internal access tracks to be maintained/kept wet to prevent dust generation
- All loads covered/wheels clean of mud when leaving site
- Switch off vehicles, plant and equipment when not being used
- Keep site clean and tidy.
- Apply waste minimisation principles of avoid, reduce, reuse, recycle and dispose.
- If a suspected heritage item is found, stop any work within 50 m of the item and contact the Environmental Manager immediately. Refer Unexpected Heritage Finds Procedure.
- If incident occurs, prevent further harm to yourself, personnel and the environment wherever possible. Notify your site supervisor/foreman immediately.