



Australian Government

**BUILDING OUR FUTURE**



Aerial view of foundation treatments around Tuckombil Canal soft soil sites

# Devils Pulpit to Richmond River

Woolgoolga to Ballina community update - December 2016

The Australian and NSW governments are jointly funding the \$4.36 billion Woolgoolga to Ballina Pacific Highway upgrade. Roads and Maritime Services Pacific Highway Office and Pacific Complete are working together to deliver the project.

## IN THIS UPDATE

- Completed work
- Ongoing work
- Upcoming work
- How will this work affect you?

## Completed work

Early construction work at the Tabbimoble floodway and the Lang Hill area near Woodburn has been completed. This work, which reduced the impact to the endangered Oxleyan Pygmy Perch native fish species, included:

- Employing 450 people to carry out the work
- Planting about 8000 creek grasses at the waterway crossing in the Lang Hill area to restore the riparian area
- Bringing in about 70,000 cubic metres of general fill and rock.

## We wish everyone a safe journey this holiday

All work on the project will stop from 23 December and work sites will progressively reopen from 3 January 2017. To help manage traffic during this time a number of road work speed limits will be lifted.



The native fish species live in very specific waters and are vulnerable to any changes. This work delivered an excellent environmental outcome because it was completed on time which avoided the spawning season from early October to late April.

Additional work completed in the Devils Pulpit to Richmond River area includes:

- Upgrade of Glencoe Road and Woodburn-Evans Head Road intersections
- Removal of a residential structure near Darkys Lane on land acquired for the project
- Geotechnical investigations.

## Ongoing work

Work continuing early next year, weather permitting includes:

- Relocating power, water and telecommunications services
- Installing nest boxes to provide habitat for wildlife as vegetation clearing continues and relocating threatened vegetation species
- Foundation treatments from the Tuckombil Canal area to Woodburn-Evans Head Road that includes loading material on soft soil sites and installing equipment to monitor settlement
- Installing environmental controls as work progresses and equipment to monitor dust, noise, water quality and flora and fauna.

## Upcoming work

### Building the Woodburn to Broadwater service road to reduce traffic impacts

The service road will be constructed next to the existing highway between Woodburn and Broadwater through the Broadwater National Park. Traffic will travel on this new road while the existing highway is upgraded. This will minimise the impact of our work and improve safety for workers and motorists.

Building the service road includes:

- Clearing vegetation, foundation treatment and drainage installation
- Pavement construction
- Construction of fauna underpass structure
- Installing barriers and temporary fencing
- Installing new traffic signage and line marking.

The service road will remain as a local road connecting Woodburn and Broadwater once work on the upgrade is completed.

### Building compound facilities

Site compounds are built to provide temporary office, workshop and storage facilities for construction teams working on the upgrade. All compounds will be used throughout the project. Once the upgrade is complete compounds will be removed and sites restored.



Creek grasses at the waterway crossing in the Lang Hill area

## Compound sites between Devils Pulpit and Richmond River

Site compound location	Function (site compounds will generally include a combination of the facilities below)
Existing Woodburn south – near Tuckombil Canal	<ul style="list-style-type: none"> <li>• Temporary offices and amenities</li> </ul>
Proposed Woodburn north – between Woodburn and Broadwater	<ul style="list-style-type: none"> <li>• Staff and truck parking and storage for equipment and materials</li> <li>• Workshop for repairing and maintaining machinery and equipment</li> </ul>
Proposed Broadwater – west of Broadwater - Evans Head Road in Broadwater	<ul style="list-style-type: none"> <li>• Temporary offices and amenities</li> <li>• Staff and truck parking and storage for equipment and materials</li> <li>• Workshop for repairing and maintaining machinery and equipment</li> <li>• Batch plant for making concrete and precast structures</li> </ul>

Building on the new sites will start in early 2017. Access to these sites will generally be off the Pacific Highway. Please contact the project team if you have questions or feedback about the site compounds.

### Building the new bridge over the Richmond River, near Broadwater

The new bridge over the Richmond River will be located north and downstream of Broadwater and will be about one kilometre long. We have completed geotechnical investigation work in the area and are expected to award the contract for design and construction in early 2017.

### Work Hours

Typically work will be carried out between 7am and 6pm, Monday to Friday and 8am to 5pm on Saturdays if required. In areas where residents live more than 200 metres from the project boundary, extended work hours from 6am to 7pm weekdays are allowed. Nearby residents will be notified at least five working days in advance of any activities scheduled outside of these working hours.

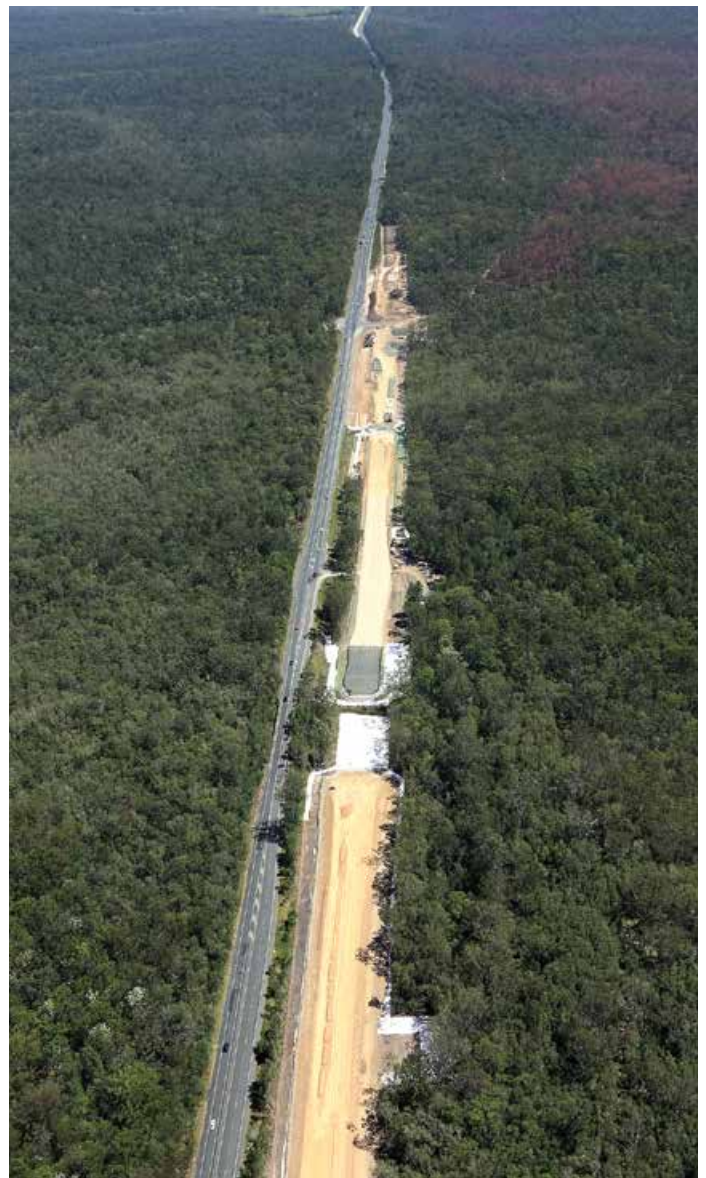


**7am – 6pm Monday – Friday**  
**8am – 5pm Saturdays**

### How will this work affect you?

There may be some noise, dust and disruption associated with this work. You may also notice some changes in local areas during the work including increased vehicle and truck movements as well as project team members on site. There will be signage and traffic control to advise of changed traffic conditions. If you are travelling between Woodburn and Broadwater on the Pacific Highway you may experience some minor delays once the work on the service road starts. Every effort is taken to ensure the safety of all road users travelling on the Pacific Highway.

We apologise for any inconvenience caused and thank you for your patience during this important work.



Aerial view of early construction work at Tabbimoble floodway

## Site management during the holidays

To manage dust during the shutdown period we:

- ✓ Use a soil binder on exposed earth
- ✓ Spray areas with fertiliser and seeds encouraging grass growth
- ✓ Cover areas with fabric

To ensure your safety please stay out of work sites during the shutdown period. We will be monitoring **1800 778 900** and **w2b@pacificcomplete.com.au** during this time, with a team on standby to respond to your concerns



**Dust** will be managed over the **holiday period**

## Project progress

- ✓ 26 kilometres of the upgrade on track to open late 2017
- ✓ More than \$1 billion worth of contracts tendered
- ✓ More than 1000 people working to deliver the Woolgoolga to Ballina upgrade
- ✓ More than two million project hours worked
- ✓ About 177 Olympic size swimming pools of earth moved
- ✓ 18 kilometres of borehole drilling using 15 drilling rigs
- ✓ More than 2000 kilometres of wick drains installed as part of soft soil treatment



more than **1000+** people working



more than **26km** of road to open in 2017

## Targeting koala zero harm during construction

All staff will be trained about koalas in our project area, how we manage construction to reduce the impact of our work and what to do if they spot a koala. More than 260 employees have been inducted since mid-November.

To mitigate the impact on koalas during the operation of the highway we are:

- ✓ Installing 26 wildlife connectivity structures in an area where koalas live – about one structure every 500 metres
- ✓ Installing completely closed fencing along the new highway and additional fencing on existing highway and local roads where koalas are active
- ✓ Planting koala feed trees



**260+** employees inducted

## Looking out for emus

To manage the impact of the project we are:

- ✓ Monitoring emu activity using aerial survey, ground surveys and satellite tracking
- ✓ Installing emu fences so emus become used to the crossing zones before the highway opens
- ✓ Monitoring fence types and locations
- ✓ Training staff working in areas with emus about fencing, monitoring and managing emus on site
- ✓ Installing signs to alert motorists of emu activity



**Manage** environmental impacts from road projects

## Contact us

For more information about the project, please contact us:

☎ 1800 778 900 (toll free)    @ W2B@pacificcomplete.com.au    🌐 [www.rms.nsw.gov.au/W2B](http://www.rms.nsw.gov.au/W2B)

## Privacy

Roads and Maritime Services ("RMS") is subject to the *Privacy and Personal Information Protection Act 1998* ("PIIP Act") which requires that we comply with the Information Privacy Principles set out in the PIIP Act.

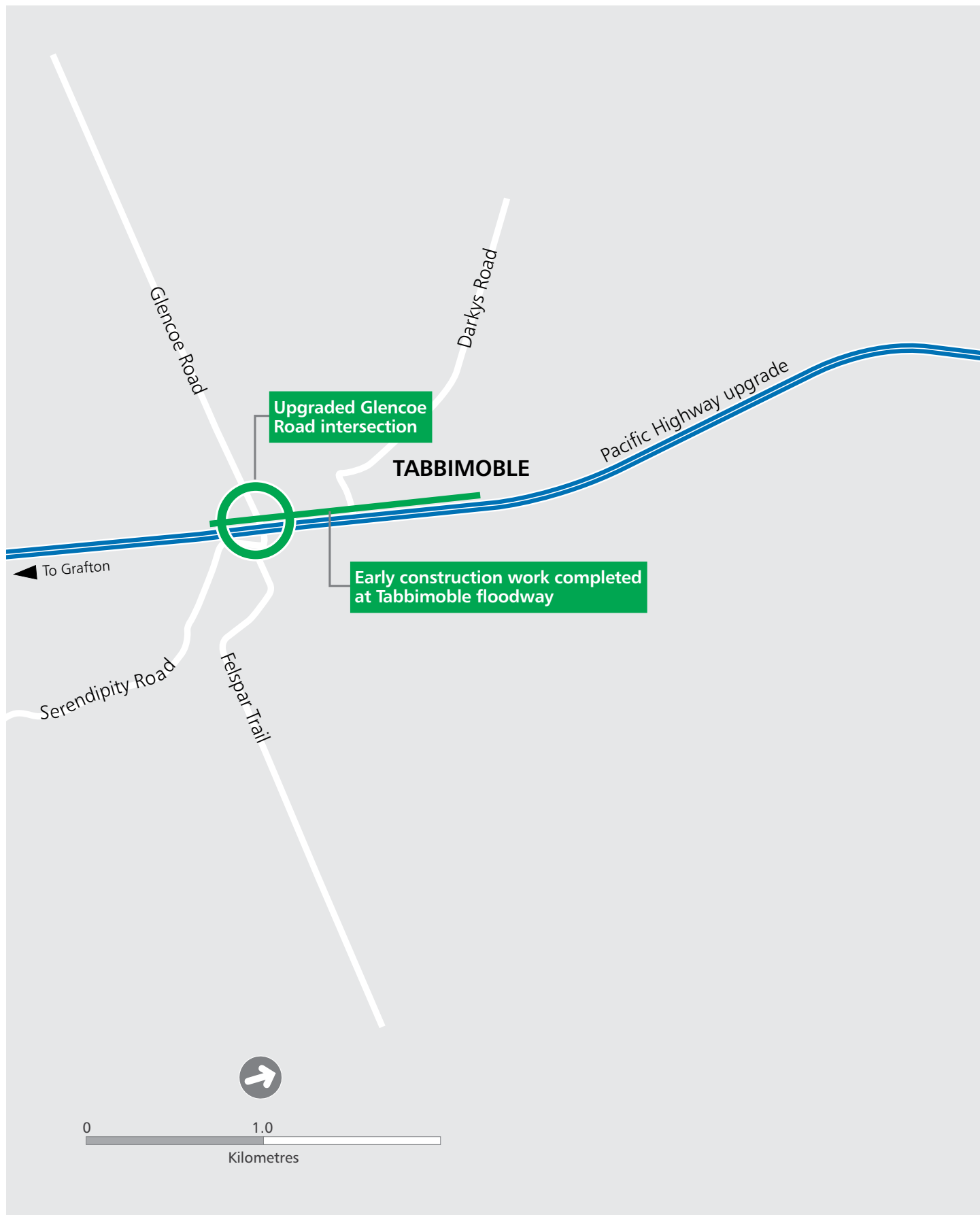
All information in correspondence is collected for the sole purpose of assisting in the assessment of this proposal/ delivering this project. The information received, including names and addresses of respondents, may be published in subsequent documents unless a clear indication is given in the correspondence that all or part of that information is not to be published. Otherwise RMS will only disclose your personal information, without your consent, if authorised by the law. Your personal information will be held by RMS at 76 Victoria St, Grafton NSW. You have the right to access and correct the information if you believe that it is incorrect.



December 2016 RMS 16.609



## Work at Tabbimoble



## Work between Woodburn and Broadwater

