



Australian Government

**BUILDING OUR FUTURE**



November 2017

## **Start of major work between Devils Pulpit and Broadwater for the Woolgoolga to Ballina Pacific Highway upgrade**

**The Australian and NSW governments are jointly funding the \$4.36 billion Woolgoolga to Ballina Pacific Highway upgrade. Roads and Maritime Services Pacific Highway Project Office and Pacific Complete are working together to deliver the project.**

Roads and Maritime has awarded the main civil contract to CPB Contractors for the Woolgoolga to Ballina upgrade between Devils Pulpit and Broadwater. This work will involve upgrading 35 kilometres to dual carriageway, including 18 bridges.

Major work will start from mid-November and will continue for up to 25 months, weather permitting.

### **Work to date**

The Woolgoolga to Ballina project team has been carrying out early work between Devils Pulpit and Broadwater. This work has included soft soil treatment and monitoring, temporary and permanent fauna exclusion fencing along the project alignment and starting to build bridges.

### **Upcoming activities**

As CPB Contractors prepare for major work in this area, residents, businesses and road users will notice an increase in activity. During the next three months, activities will include:

- Delivering heavy machinery and equipment to various locations
- Setting up environmental management controls
- Installing temporary and permanent fencing
- Carrying out flora and fauna surveys and starting vegetation removal
- Starting major earthwork within the project alignment
- Starting work at nominated sites including Broadwater, Woodburn cut and Lang Hill.

### **Major earthwork**

During major work, dust, noise and vibration will occur in proximity to the project site. Activities will be closely monitored and managed in-line with the project's Conditions of Approval and Construction Environmental Management Plan. The project team will use environmental management and mitigation methods to minimise these impacts on surrounding areas. Some of these measures will include:

- Spraying water to suppress dust and applying dust binding agents to cover stockpiles
  - Monitoring air quality, noise and vibration
-

- Positioning noise-generating plant and equipment away from residential properties, where practicable.

## Temporary site compounds and storage areas

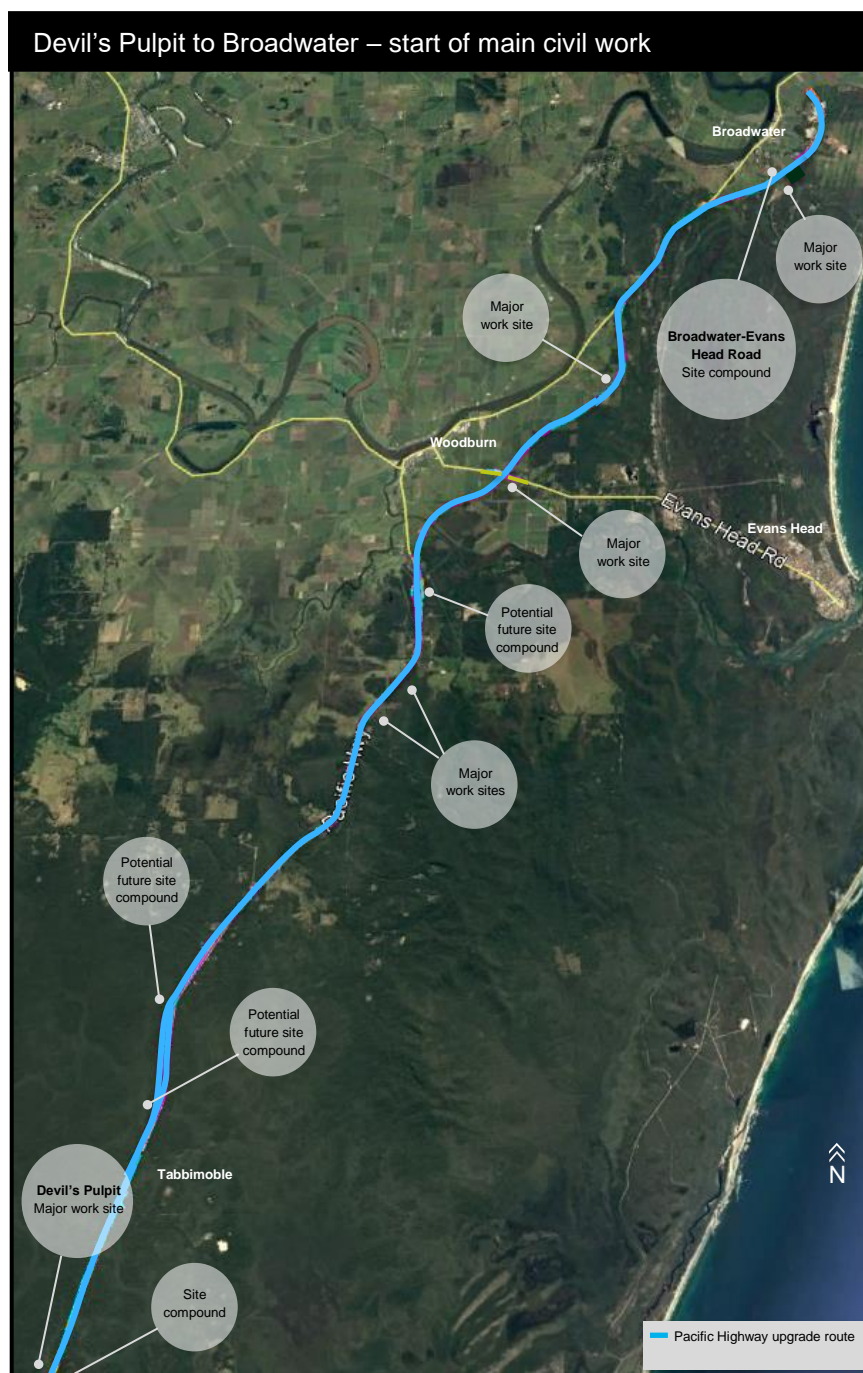
The project team is now operating from the main site compound on the Broadwater–Evans Head Road at Broadwater. Due to the size of the work area between Devils Pulpit and Broadwater, smaller site compounds and storage areas will be required at Woodburn, Trustums Hill, and Tabbimoble.

These compounds will be removed and the land restored after the project is complete.

## Site access points

The project team will use temporary vehicle access points along the project alignment to provide safe access into and out of the project alignment. All vehicle access points are fenced and gated.

Please note that public entry into the project alignment or work zone is not permitted.



## Removing vegetation

From mid-November, the project team will start to remove vegetation from within the approved project boundary between Devils Pulpit and Broadwater, weather permitting.

The project team has worked with environmental planning principles to limit vegetation removal where possible – actively avoiding, minimising, mitigating or offsetting potential construction impacts on threatened fauna and flora species, as well as environmentally sensitive areas.

Before starting any vegetation removal, comprehensive pre-clearing surveys will be carried out by experienced and licensed wildlife carers and/or ecologists to ensure vegetation removal is carried out in-line with the project's Conditions of Approval and Construction Environmental Management Plan. Vegetation removal will start in different locations within the approved project boundary and will continue until 2018, weather permitting.

This work will include:

- Carrying out pre-clearing surveys (day and night) before vegetation is removed
- Removing vegetation using different types of machinery and equipment, for example a slasher on long grass and excavators and dozers for trees
- Mulching removed vegetation
- Loading vegetation into trucks for stockpiling along the project alignment to be reused on site
- Removing vegetation off-site, where required
- Preparing suitable vegetation for reuse as fauna connectivity structures.

Much of the removed vegetation (mulch) will be reused within the project alignment for erosion and sediment control and landscaping.

## How will work affect you?

During work, nearby residents, businesses and road users can expect:

- Increasing traffic on local roads including construction vehicles, heavy machinery and haulage trucks
- Delivering of heavy machinery, equipment and materials via local roads
- Increasing noise levels due to the use of heavy machinery and equipment
- Flashing lights and reversing alarms on machinery and vehicles for the safety of workers
- Using temporary lighting towers at site compounds, storage areas, gate access points and other work areas where necessary
- Low levels of vibrating during the use of construction equipment and machinery including excavators and rollers
- Changing road conditions on a temporary basis, including reductions to the speed limits, possible short delays and the presence of traffic control officers.

## Changes to traffic

From mid-November vehicles delivering oversized machinery and equipment, sometimes under the guidance of pilot vehicles and/or police escort, will travel on the Pacific Highway, Broadwater–Evans Head Road and Woodburn–Evans Head Road to the project site compounds and to other nominated locations across the site, weather permitting. These deliveries may occur during the night due to restrictions on some roads.

The Woolgoolga to Ballina project team is committed to working with directly affected property owners for activities that may require temporary changes to private property access.

---

Motorists are asked to keep to speed limits and follow the direction of traffic control officers and signage. For the latest traffic updates, call 132 701, visit [livetraffic.com](http://livetraffic.com) or download the Live Traffic NSW app.

## Work hours

Typically work will be carried out during the project's approved construction hours, which are:



7am – 6pm Monday – Friday  
8am – 5pm Saturdays

No work will be carried out on Sundays or public holidays.

Nearby residents will be notified at least five working days in advance of any activities scheduled outside of these working hours.

## For more information

If you have any questions, please contact the Woolgoolga to Ballina project toll free line on 1800 778 900 dial 1, email [W2B@pacificcomplete.com.au](mailto:W2B@pacificcomplete.com.au) or visit the project website [rms.nsw.gov.au/W2B](http://rms.nsw.gov.au/W2B).

We apologise for any inconvenience and thank you for your patience during this important work.



If you need help understanding this information, please contact the Translating and Interpreting Service on 131 450 and ask them to call us on 1800 778 900.

---