

May 2018

Bus stop relocation from Monday 4 June 2018 on Jackybulbin Road for the Woolgoolga to Ballina Pacific Highway upgrade

The Australian and NSW governments are jointly funding the Woolgoolga to Ballina Pacific Highway upgrade. Roads and Maritime Services' Pacific Highway Project Office, Pacific Complete and its contractor partners are working together to deliver the project.

The bus stop on Jackybulbin Road, Jackybulbin will be relocated to allow for construction work for the Woolgoolga to Ballina Pacific Highway upgrade.

What is involved?

The bus stop will be relocated about 65 metres to the west, on the southern side of the road on **Monday 4 June 2018**. The temporary bus stop will be in use for about 12 months. A map has been provided to help explain this change.

Traffic changes

There will be some temporary traffic changes while this work is carried out to ensure the safety of road users and workers. Reduced speed limits and lane closures may be in place and may affect travel times. Please keep to speed limits and follow the direction of traffic controllers and signs. For the latest traffic updates call 132 701, visit livetraffic.com or download the Live Traffic NSW App.

Work hours

Typically work will be carried out during the project's approved construction hours, which are:

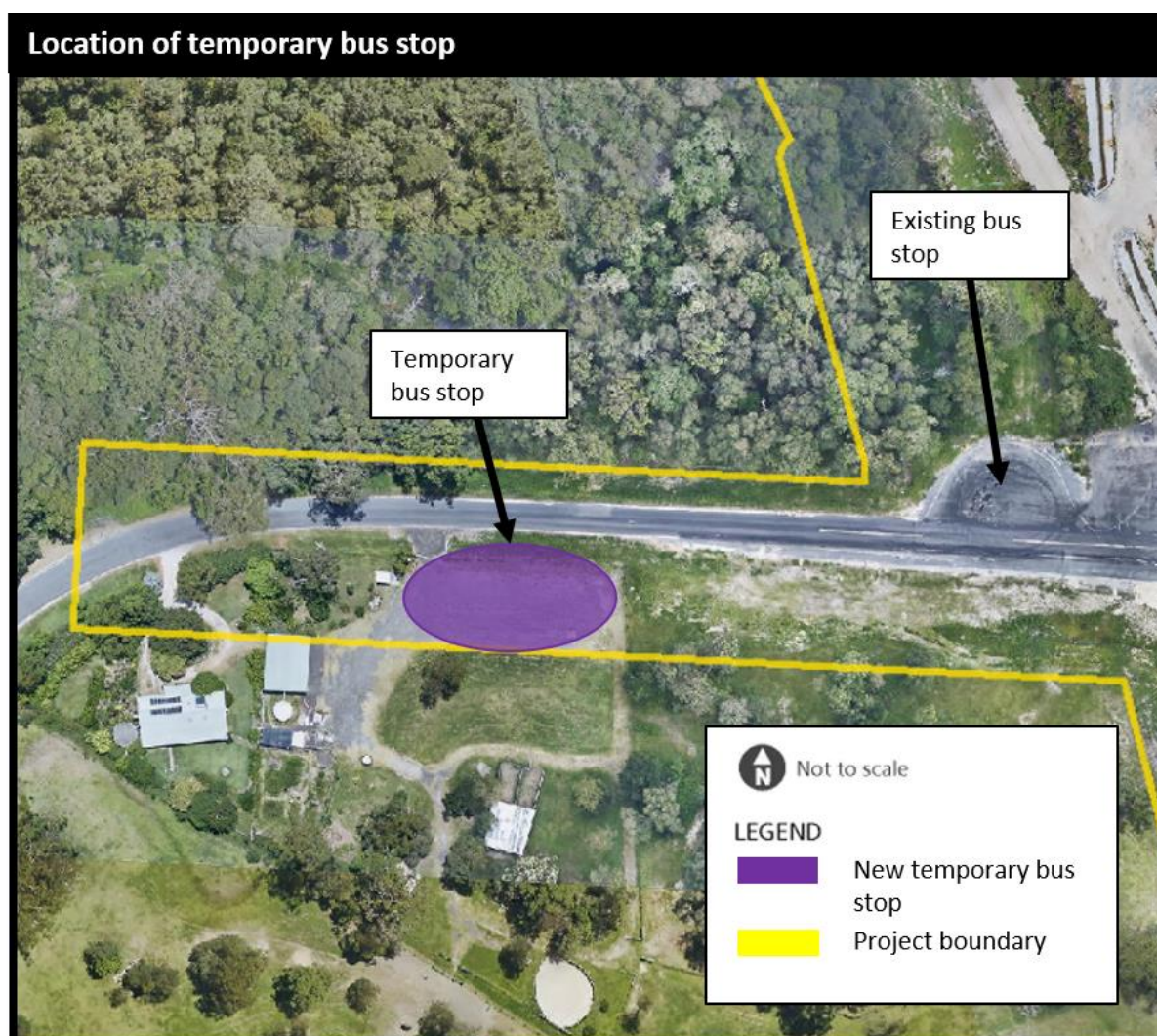


7am – 6pm Monday – Friday
8am – 5pm Saturdays

For more information

If you have any questions, please contact the Woolgoolga to Ballina project toll free line on 1800 778 900 dial 1, W2B@pacificcomplete.com.au or visit the project website rms.nsw.gov.au/W2B.

We apologise for any inconvenience and thank you for your patience during this important work.



If you need help understanding this information, please contact the Translating and Interpreting Service on 131 450 and ask them to call us on 1800 778 900.