

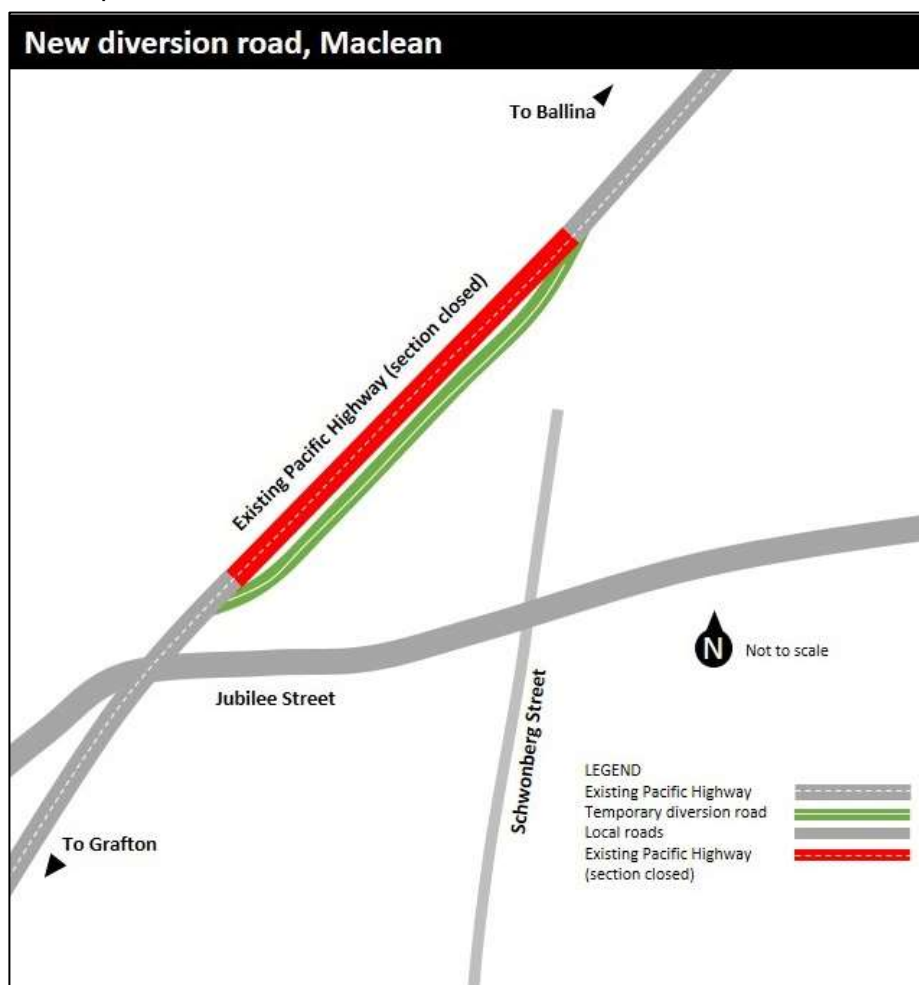


Changed traffic conditions on the Pacific Highway at Maclean for the Woolgoolga to Ballina Pacific Highway upgrade

The Australian and NSW governments are jointly funding the Woolgoolga to Ballina Pacific Highway upgrade. Roads and Maritime Services' Pacific Highway Project Office, Pacific Complete and its contractor partners are working together to deliver the upgrade.

As part of the upgrade, a temporary traffic switch is required on the Pacific Highway north of Jubilee Street, Maclean. Motorists will be switched onto a new diversion road in mid-July 2018, weather permitting.

We have provided a map to show the location of the work.



What work are we going to do?

Work will include removing sections of the current road surface, asphaltting the road surface, installing traffic barriers, installing new line marking and finishing the tie-in of the diversion road to the highway. As this work will require full and partial temporary road closures on the Pacific Highway, traffic control will be in place to minimise impact on road users and for the safety of workers and motorists.

The diversion road will start on the Pacific Highway near Jubilee Street and will reconnect with the highway about 200 metres north of Jubilee Street. This traffic arrangement is temporary and will be in place for about 10 months. It will allow the project team to maintain capacity on the road network while safely building the upgrade.

Work hours

Typically work will be carried out during the project's approved construction hours which are:



In areas where residents live more than 200 metres from the work area, extended work hours are allowed between 6am and 7am and 6pm and 7pm from Monday to Friday. Construction hours for driven piling are from 8am to 5pm between Monday and Friday and from 8am to 1pm on Saturday.

How will the work affect you?

The potential impacts could include:

- Short delays for road users
- Construction noise, vibration and lighting.

Traffic changes

There will be temporary traffic changes including changes to speed limits to ensure the safety of road users while work is carried out. Lane closures and signage will be in place and the speed limit will be reduced to 40 kilometres/hour. This may affect travel times. Please keep to speed limits and follow signs and traffic controllers' directions. For the latest traffic information, visit livetraffic.com, download the Live Traffic App or call the Transport Management Centre on 132 701.

Contact us

For more information about the work please contact the project team toll free on 1800 778 900, email W2B@pacificcomplete.com.au or visit the project website at rms.nsw.gov.au/W2B.

We apologise for any inconvenience and thank you for your patience during this important work.



If you need help understanding this information, please contact the Translating and Interpreting Service on 131 450 and ask them to call us on 1800 778 900