



Australian Government

BUILDING OUR FUTURE



September 2017

Have your say on using rock from Moonimba Quarry to build the Woolgoolga to Ballina Pacific Highway upgrade

The Australian and NSW governments are jointly funding the \$4.36 billion Woolgoolga to Ballina Pacific Highway upgrade. Roads and Maritime Services Pacific Highway Project Office and Pacific Complete are working together to deliver the project.

To build the upgrade, the Woolgoolga to Ballina project team is proposing to use rock from the Moonimba quarry site (also known as Robinsons Quarry) on Old Boggy Creek Road, Bungawalbin.

The NSW Department of Planning and Environment is now displaying this proposal for public comment. Anyone can make a written submission about the proposal during the exhibition period from **Monday 11 September 2017** until **Monday 25 September 2017**.

What are we proposing?

Roads and Maritime Services is seeking approval from the NSW Department of Planning and Environment to remove 800,000 cubic metres of rock over two years for the upgrade. This quantity during this timeframe is a change from the allocation approved under the Quarry's existing Development Application. This is being sought under the project's existing Conditions of Approval.

The extracted material will be transported along Boggy Creek Road, Reardons Lane, Woodburn-Coraki Road and the Pacific Highway for use on the project.

We expect to start using the quarry site in March 2018 pending approval from the Department of Planning and Environment. To prepare for work we will:

- Remove vegetation
- Establish site offices and amenities
- Install plant and equipment
- Install environmental controls.

When we are operating at the site, our activities will include:

- Operating machines and equipment within the site
 - Excavating, drilling and blasting
 - Crushing and stockpiling rock material
 - Moving material from the site to the project's work areas
 - Staff travelling to and from the site.
-

How will the work affect you?

Once the material is extracted from the site it will then be crushed and screened to make it a uniform size and shape that meets road building specifications.

There will be noise when we are working at this site. To manage noise we will, wherever possible:

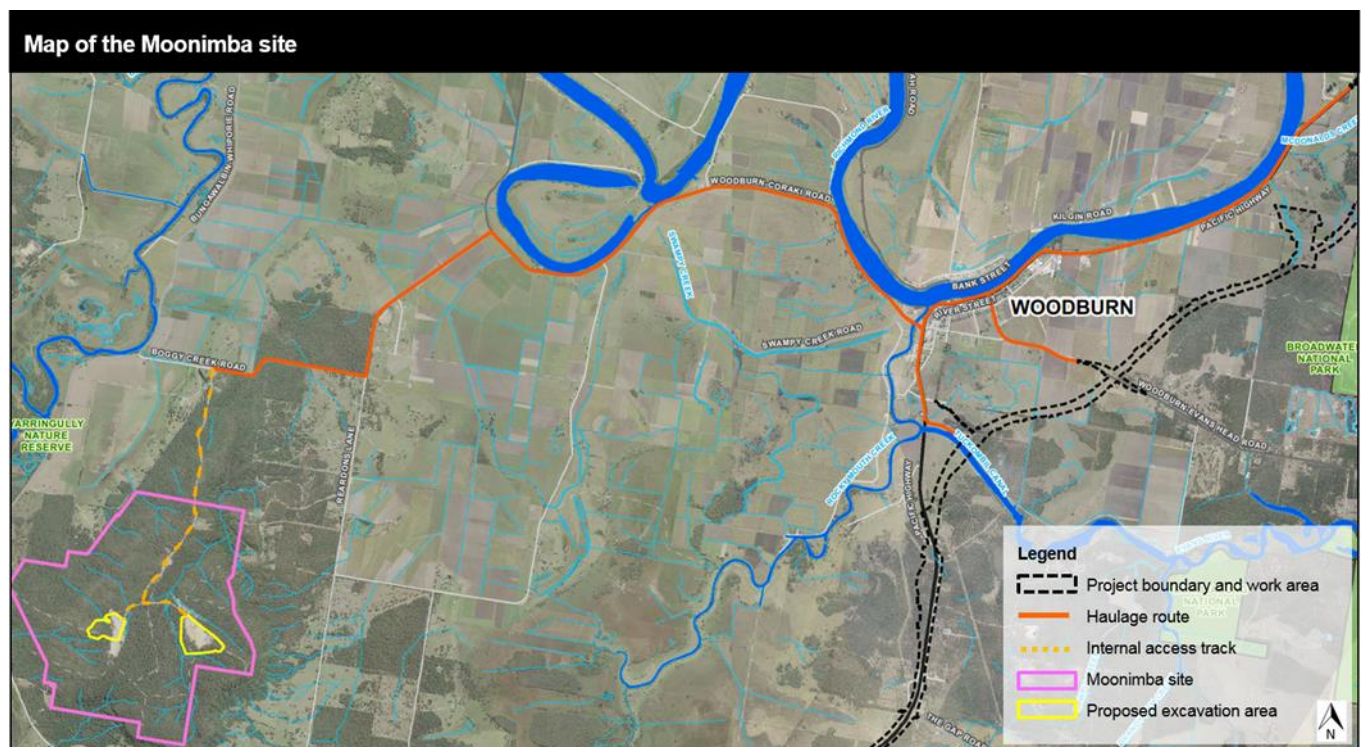
- Minimise the numbers of plant and equipment operating at the same time and direct them away from residential properties
- Only carry out blasting:
 - From 9am to 5pm between Monday and Friday
 - From 9am to 1pm on Saturday
 - At no time on Sunday or public holidays.
- Monitor noise and use natural features and site structures to shield noise.

Construction traffic

Heavy vehicles will travel along existing haulage routes and traffic will be managed in accordance with the project's Traffic and Access Management Plan. It is estimated that at peak periods there will be about 300 heavy vehicle movements per day. To manage this increase we will, wherever possible:

- Reduce speed limits along local roads, if required
- Maintain local roads during the use of the site
- Carry out any required improvements to local roads or intersections before starting haulage.

We have included a map to show the site's location and haulage routes to the project boundary. This haulage route will split heavy vehicle movements to different parts of the site so that not all vehicles will travel through Woodburn.



Work hours

Typically work will be carried out during the project's approved construction hours, which are from Monday to Friday between 7am and 6pm and on Saturday between 8am and 5pm.

Display locations

The Department of Planning and Environment is now displaying this proposal for public comment. Written submissions can be made from **Monday 11 September** until **Monday 25 September**.

The proposal and accompanying documents can be viewed electronically on the Department's website www.majorproject.planning.nsw.gov.au/page/on-exhibition/. You can also view an electronic copy at a NSW Service Centre. Hard copies of the proposal are also available to view at:

- **Richmond Valley Council:** Corner Walker Street and Graham Place, Casino
- **Evans Head Library:** 19 Woodburn Street, Evans Head
- **Coraki Library:** Adams Street, Coraki.

The Woolgoolga to Ballina project team is holding information sessions to provide an opportunity for community members and stakeholders to talk directly with the project team about this proposal. Hard copy of the proposal application and accompanying documents will be available to view at the information sessions.

The sessions will be held at the **Woodburn Visitor Information Centre**, 114 River Road, Woodburn on:

- **Thursday 14 September Noon – 2pm**
- **Monday 18 September 5.30pm – 7.30pm.**

Have your say

Your submission must reach the Department by Monday 25 September 2017.

To make a submission, use the online form if possible. This is available at www.majorprojects.planning.nsw.gov.au/page/on-exhibition/.

If you cannot lodge online, you can write to the address below. If you want the Department to delete your personal information before publication, please make this clear at the top of your letter.

Your submission should be marked, Attention: Director - Transport Assessments
Planning Services, Department of Planning and Environment, GPO Box 39 Sydney NSW 2001.
You need to include:

- Your name and address, at the top of the letter only
- The name of the application and the application number
- A statement on whether you support or object to the proposal
- The reasons why you support or object to the proposal
- A declaration of any reportable political donations made in the previous two years.

To find out what is reportable, and for a disclosure form, go to www.planning.nsw.gov.au/DonationsandGiftDisclosure or phone the number below for a copy. Note the disclosure requirements apply however a submission is made.

For more information about how to submit your feedback you can phone the Department of Planning and Environment on 1300 305 695.

For more information about the Woolgoolga to Ballina project, please contact us on 1800 778 900, email W2B@pacificcomplete.com.au or visit the project website rms.nsw.gov.au/W2B.



131 450

If you need help understanding this information, please contact the Translating and Interpreting Service on 131 450 and ask them to call us on 1800 778 900.



Australian Government

BUILDING OUR FUTURE



September 2017

Have your say on using rock from Moonimba Quarry to build the Woolgoolga to Ballina Pacific Highway upgrade

The Australian and NSW governments are jointly funding the \$4.36 billion Woolgoolga to Ballina Pacific Highway upgrade. Roads and Maritime Services Pacific Highway Project Office and Pacific Complete are working together to deliver the project.

To build the upgrade, the Woolgoolga to Ballina project team is proposing to use rock from the Moonimba quarry site (also known as Robinsons Quarry) on Old Boggy Creek Road, Bungawalbin.

The NSW Department of Planning and Environment is now displaying this proposal for public comment. Anyone can make a written submission about the proposal during the exhibition period from **Monday 11 September 2017** until **Monday 25 September 2017**.

How to make a submission

The Department of Planning and Environment is now displaying for public comment a proposal to use rock from the Moonimba Quarry site to build the Woolgoolga to Ballina Pacific Highway upgrade.

Your submission must reach the Department by Monday 25 September 2017.

To make a submission, use the online form if possible. This is available at www.majorprojects.planning.nsw.gov.au/page/on-exhibition/

If you cannot lodge online, you can write to the address below. If you want the Department to delete your personal information before publication, please make this clear at the top of your letter.

Your submission should be marked, Attention: Director - Transport Assessments

Planning Services, Department of Planning and Environment, GPO Box 39 Sydney NSW 2001. You need to include:

- Your name and address, at the top of the letter only
- The name of the application and the application number
- A statement on whether you support or object to the proposal
- The reasons why you support or object to the proposal
- A declaration of any reportable political donations made in the previous two years.

To find out what is reportable, and for a disclosure form, go to www.planning.nsw.gov.au/DonationsandGiftDisclosure

or phone the number below for a copy. Note the disclosure requirements apply however a submission is made.

Display locations

The proposal and accompanying documents can be viewed electronically on the Department's website www.majorproject.planning.nsw.gov.au/page/on-exhibition/

You can also view an electronic copy at a NSW Service Centre.

The Woolgoolga to Ballina project team is holding information sessions displaying a hard copy of the proposal application and accompanying documents.

The information sessions will be held at:

Woodburn Visitor Information Centre, 114 River Road, Woodburn.

Dates and times:

Thursday 14 September Noon – 2pm

Monday 18 September 5.30pm – 7.30pm

A hard copy of the proposal is also available to view at:

Richmond Valley Council, Corner Walker Street and Graham Place, Casino

Evans Head Library, 19 Woodburn Street, Evans Head

Coraki Library, Adams Street, Coraki.

For more information

For more information about submitting feedback on this proposal you can phone the Department of Planning and Environment on 1300 305 695.

For more information about the Woolgoolga to Ballina project, please contact us on 1800 778 900, email W2B@pacificcomplete.com.au or visit the project website rms.nsw.gov.au/W2B.



If you need help understanding this information, please contact the Translating and Interpreting Service on 131 450 and ask them to call us on 1800 778 900.