

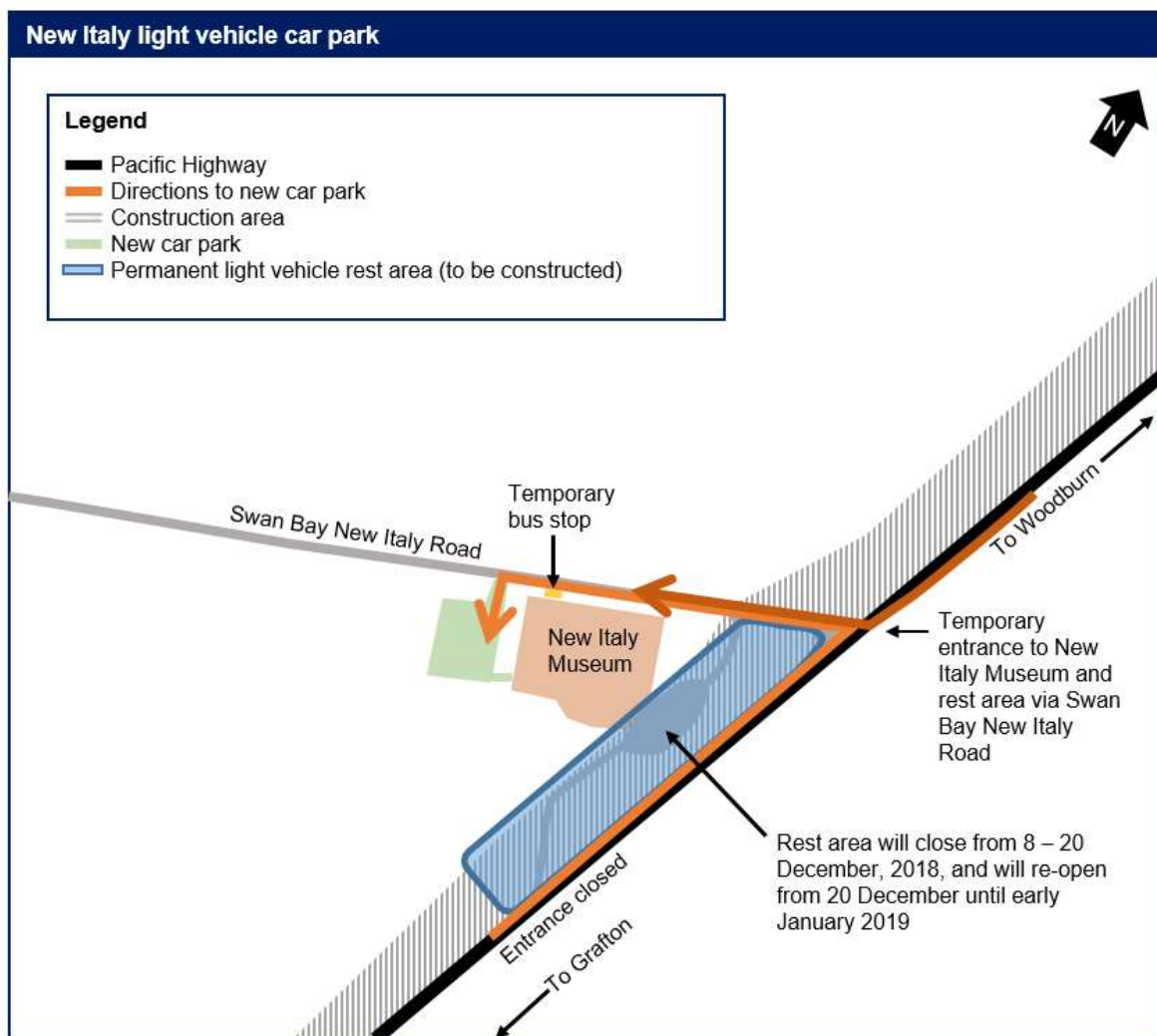


Temporary traffic changes for the New Italy light vehicle rest area

Roads and Maritime Services, Pacific Complete and its contractor partners are working together to deliver the Woolgoolga to Ballina Pacific Highway upgrade.

As part of the upgrade, the light vehicle rest area at New Italy was planned to temporarily close from late October to allow the project team to safely build the new light vehicle rest area and highway. The rest area will now temporarily close from Saturday 8 December, weather permitting.

A permanent car park will open from Saturday 1 December at the rear of the museum for road users wishing to use the New Italy rest area facilities until the upgrade opens to traffic. We have included a map to show the location of the car park.



Access to Swan Bay New Italy Road and the New Italy Museum and shops will remain open while the project team builds a new rest area at the front of the museum.

At the front of the museum, the project team will be removing vegetation, outdoor furniture and lighting. This work will start on Saturday 8 December and continue until Thursday 20 December, weather permitting. The area will temporarily re-open for motorists to use until January 2019, to provide an additional area for road users to rest.

Building the new light vehicle rest area will take nine months to complete, weather permitting. It will involve:

- Removing the existing car park surface
- Installing drainage and utility services
- Carrying out earthwork, pavement work and spray sealing
- Completing finishing work, including installing lighting, signage, line marking and landscaping
- Reopening the entrance and exit.

All work will be carried out in-line with the project's Conditions of Approval and Construction Environmental Management Plan.

Work hours

Typically work will be carried out during the project's approved construction hours, which are:

Approved construction hours	
Monday to Friday 7am–6pm	
Saturday 8am–5pm	

In areas where residents live more than 200 metres from the work, extended work hours are allowed between 6am and 7am and 6pm and 7pm from Monday to Friday. No work will be carried on Sunday or a public holiday.

Traffic changes

There will be some temporary traffic changes while this work is carried out. Please keep to speed limits and follow the direction of traffic controllers and signs. Motorists are encouraged to remember PAC – Plan, Awareness, Caution. For the latest traffic updates, you can call 132 701, visit livetraffic.com or download the Live Traffic NSW app.

We apologise for any inconvenience and thank you for your patience during this important work.

Subscribe now

We can keep you up to date about what's happening in your area or if you are interested in a specific topic. Register your interest:

 1800 778 900 (toll free)

 W2B@pacificcomplete.com.au

For more information

 1800 778 900 (toll free)

 W2B@pacificcomplete.com.au

 www.rms.nsw.gov.au/w2b

 Follow NSW Roads

If you need help understanding this information, please contact the Translating and Interpreting Service on 131 450 and ask them to call us on 1800 778 900.

