



Australian Government

**BUILDING OUR FUTURE**



April 2017

## **Have your say – Building and working at the Richmond River Bridge compound site, Broadwater**

**The Australian and NSW governments are jointly funding the \$4.36 billion Woolgoolga to Ballina Pacific Highway upgrade. Roads and Maritime Services Pacific Highway Office and Pacific Complete are working together to deliver the project.**

The Woolgoolga to Ballina project team will establish a number of compound sites along the 155 kilometre route. These compounds will have different functions and we will be working at these sites throughout the project's delivery.

The project team has identified a 7.5 hectare property about one kilometre north east of Broadwater, next to the Pacific Highway and the new bridge over the Richmond River Bridge, for the Richmond River Bridge compound site. We are seeking community and stakeholder feedback on this proposal by **Tuesday 18 April 2017**.

We have included a map to show the location of this compound.

Pending approvals, we are proposing to start building in the next couple of months with the most of the site complete and operational during the second half of 2017, weather permitting.

### **Building the Richmond River Bridge compound**

Establishing the Richmond River Bridge compound involves building:

- temporary offices and amenities
- staff and truck parking bays
- storage for equipment and stockpiling of materials
- a workshop for repairing and maintaining machinery and equipment
- a new access road from the existing Pacific Highway.

### **What to expect**

Key activities at various stages in the project will include:

- at establishment, work includes installing environmental controls, minor vegetation clearing, constructing the compound and associated carpark, operating plant and equipment
- at operation, work includes developing a staff worksite, site parking, material equipment and storage, operating a workshop for servicing plant and machinery
- at demobilisation, work includes removing buildings and car parks, and carrying out landscaping and rehabilitation work.

We apologise for any inconvenience and thank you for your patience during this important work to build the new highway.

---

## Project traffic

Workers will use the existing Pacific Highway to access the compound. As the project develops vehicles will also travel along the project alignment.



**100** truck movements  
per day during peak



**200** car movements per  
day during peak periods

\* Expected vehicle movements (one vehicle travelling in and out of the site is two movements)

To manage the increase in project vehicles in the area we will:

- build a new access road on the existing Pacific Highway with acceleration and deceleration lanes to enable safe access into the compound site
- reduce the speed limit on the Pacific Highway to 80 kilometres/hour near the compound access point.

## Work hours

Typically work will be carried out between 7am and 6pm from Monday to Friday. We will also work on Saturday between 8am and 5pm if required. Low noise impact activities which do not require the use of heavy vehicles or plant may be carried out between 6am and 7am and 6pm and 7pm from Monday to Friday.

## How will noise and vibration be managed?

Building and working at the compound will involve the use of machinery which may generate some noise. To manage the impact of noise, where possible we will:

- build site entry and exit points away from residential properties
- service and maintain plant and equipment so they are in good working order
- where practicable, noise generating plant and equipment will be directed away from residential properties
- only schedule high noise activities:
  - between 8am and 5pm Monday to Friday
  - between 8am and 1pm Saturday
  - for no longer than three hours at a time with a minimum respite time of one hour between blocks of work
- minimise the number of plant and equipment operating at the same time
- monitor noise
- use natural features and site structures to shield noise.

## Have your say and meet the team – Thursday 6 April, 2-4pm, Broadwater Hall

We are carrying out an assessment of the compound site against the requirements of our project approval. As part of this process we are seeking your feedback on the use of the site for a compound.

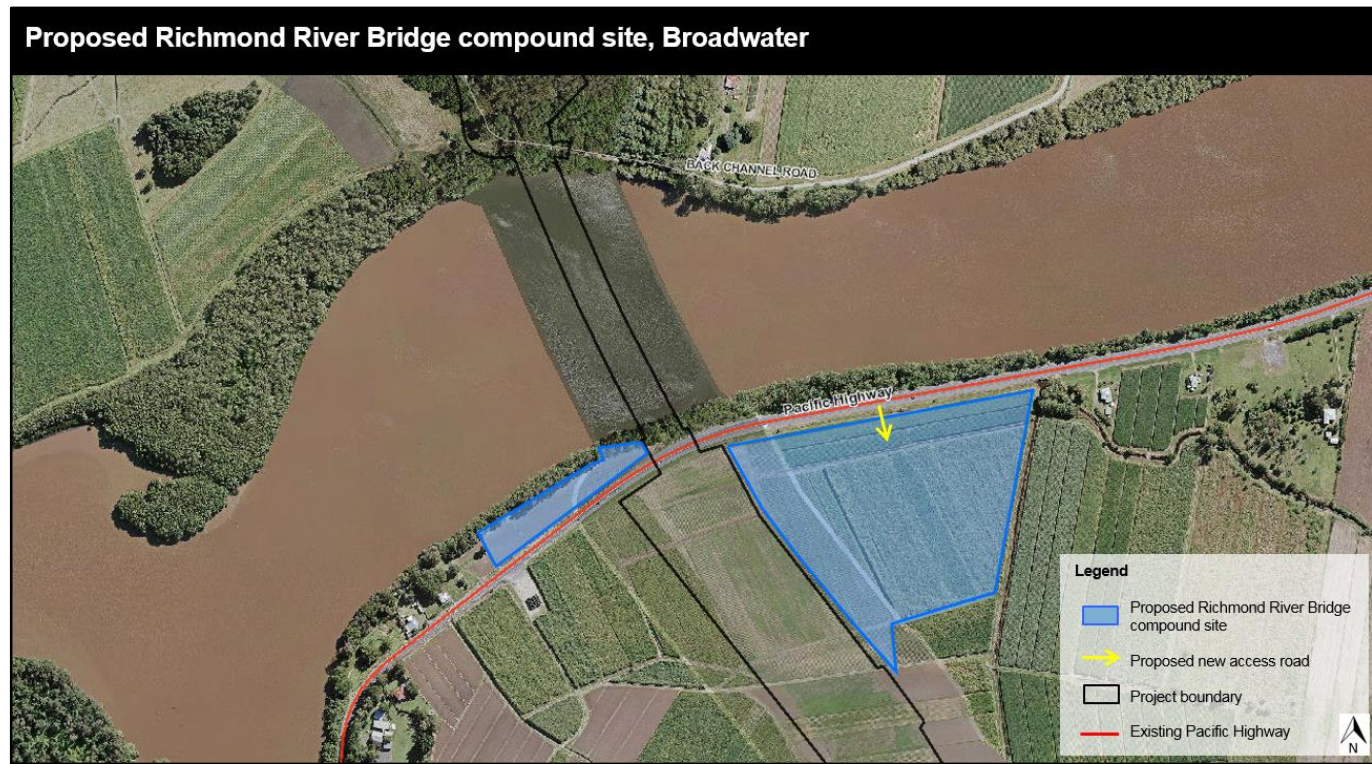
Roads and Maritime is inviting residents to attend a drop-in session at the Broadwater Community Hall in Little Pitt Street, Broadwater. If you wish to speak with the project team and find out more about the compound site please visit us on **Thursday 6 April** between **2pm and 4pm**.

---

If you have any questions, concerns or comments on the use of this compound site, please contact the project team by **Tuesday 18 April 2017** on **1800 778 900**, [W2B@pacificcomplete.com.au](mailto:W2B@pacificcomplete.com.au) or post to Communications, Woolgoolga to Ballina upgrade, PO Box 546 Grafton NSW 2460.

### Next steps

Your feedback will help the Woolgoolga to Ballina project team reduce the impact of work on the community. We will consider your feedback and prepare responses in our assessment. You will be provided with information about the way we plan to reduce the impact.



### Early work starting soon for bridge over the Richmond River at Broadwater

Lendlease Engineering has been announced as the preferred contractor to deliver the kilometre-long bridge over the Richmond River at Broadwater. Early work is planned to start from mid-April (weather permitting). This work will include surveying and geotechnical investigations to inform detailed design for the bridge. The work will be conducted in line with our standard work hours, and we will minimise any impacts to neighbours while the work is completed.

If you wish to meet members of the project team and find out more about the early work please visit us on **Thursday 6 April** between **2pm and 4pm** at **Broadwater Hall**.



If you need help understanding this information, please contact the Translating and Interpreting Service on 131 450 and ask them to call us on 1800 778 900.

**Feedback form**  
**Woolgoolga to Ballina upgrade**

We are seeking your feedback on how the proposed Richmond River Bridge compound may affect you.

Your feedback will help us manage any specific concerns you may have during the building and operation of this compound.

Please complete the form below and return it to us by **Tuesday 18 April**, at [W2B@pacificcomplete.com.au](mailto:W2B@pacificcomplete.com.au) or post to Communications, Woolgoolga to Ballina upgrade, PO Box 546 Grafton NSW 2460.

Name:	
Address	
Phone:	
Email:	
Signature	
Date	

Do you have any feedback you would like to project team to consider?

- Yes (if yes, please outline your comments below)
- No

---

---

---

---

---

---

---

---

---

---

Would you like the project team to contact you to discuss your feedback?

- Yes     No

Key issues raised will be included in the sites assessment. If you require further information, please contact the community team, on **1800 778 900 (press 1)** or [W2B@pacificcomplete.com.au](mailto:W2B@pacificcomplete.com.au).

Thank you.