



Australian Government

BUILDING OUR FUTURE



April 2018

Out of hours work at new bridge over the Richmond River at Broadwater for the Woolgoolga to Ballina Pacific Highway upgrade

The Australian and NSW governments are jointly funding the \$4.36 billion Woolgoolga to Ballina Pacific Highway upgrade. Roads and Maritime Services' Pacific Highway Project Office, Pacific Complete and its contractor partners are working together to deliver the project.

As part of work to build the new bridge over the Richmond River at Broadwater, the project team has been undertaking essential concreting activities outside of normal construction hours.

Some of the larger components of the bridge, particularly columns, headstocks and bridge decks require lengthy concrete pours. In order to carry out this work, the project team may start at 5am finish after 6pm to continue pouring without interruption. A map of the work area has been provided.

For the concrete curing process to be successful and achieve the required quality, the project team will continue to carry out essential concrete work outside of normal construction hours, which are:



7am – 6pm Monday – Friday
8am – 5pm Saturdays

The project team will carry out this additional work between **5am and 7am** and between **6pm and 10pm** from Monday to Friday and **6am – 8am Saturdays**.

This work will take place intermittently from **3 April to 21 December 2018**, weather permitting.

The project team has discussed the nature of this work with nearby neighbours. We appreciate the community's patience while this important work continues.

Why do we need to do this work?

There are a number of technical reasons why work is required outside of normal construction hours including:

- **Weather** – Weather conditions, in particular heat, humidity and wind can impact the curing process of concrete once it has been poured. Starting concrete pours earlier in the day when temperatures are cooler allows the concrete curing process to occur more efficiently.
 - **Quality** – To meet essential quality requirements and maintain the structural integrity of the bridge, concrete must be poured without interruption. Pouring concrete earlier in the day and/or into the evening allows enough time to cure and texture the surfaces.
-

How will the work affect you?

The work will involve the use of concrete trucks, pumps, concrete vibrators, power screeds and concrete finishing equipment. During our work, we will monitor noise levels to help us manage impacts.

We will contact affected neighbours to confirm the timing of the activity before each period of out of hours work. Some of these activities will include using machinery which generates noise, however we will minimise impacts by:

- Carrying out all work in accordance with the approved Noise and Vibration Management Plan
- Shielding and directing lights away from houses
- Locating equipment including generators as far as possible from houses
- Turning off machinery when not in use
- Planning activities to minimise noise from reversing vehicles.

The work applies to the delivery, placement, compaction and finishing of concrete only. Other noise generating activities such as pile driving and earthwork will not be conducted outside of normal construction hours in this area.

Road users may also notice an increase in heavy vehicles on local roads during this work. The project team continues to work closely with local councils to plan light and heavy vehicle movements and to manage potential impacts to communities and other road users.

At times, road users may experience short delays when travelling through this area due to site deliveries or equipment movements. Traffic control management may also include the use of temporary mobile traffic lights.

Please keep to speed limits and follow the direction of traffic controllers and signs.

All work will be carried out in line with the project's Conditions of Approval and Construction Environment Management Plan.

For more information

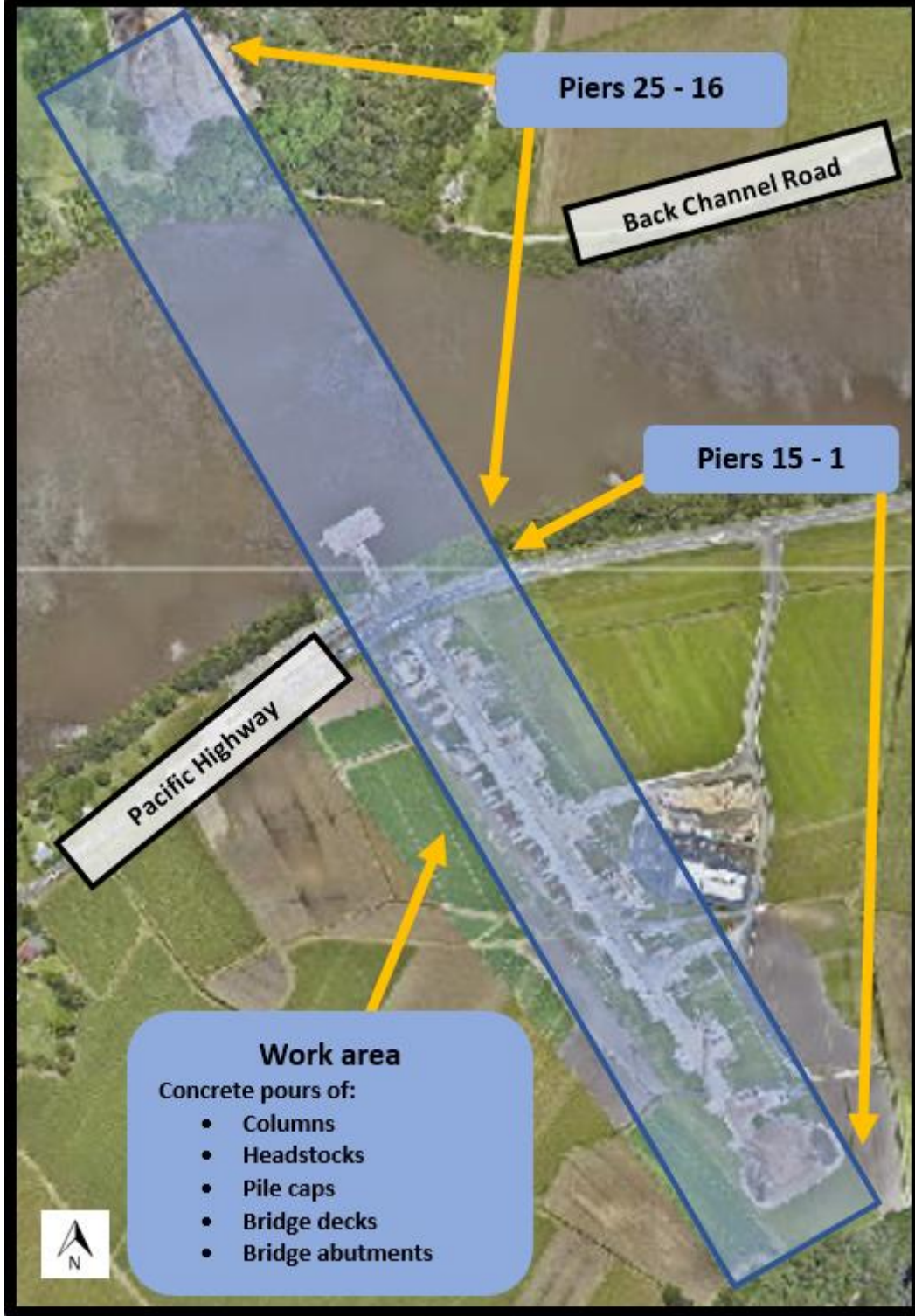
If you have any questions, please contact the Woolgoolga to Ballina project toll free line on 1800 778 900 dial 1, W2B@pacificcomplete.com.au or visit the project website rms.nsw.gov.au/W2B.

We apologise for any inconvenience and thank you for your patience during this important work.



If you need help understanding this information, please contact the Translating and Interpreting Service on 131 450 and ask them to call us on 1800 778 900.

Out of hours concrete works at the new bridge over the Richmond River at Broadwater





Australian Government

BUILDING OUR FUTURE



Location	Activity	Why	Hours	Occurrence	Impacts
Southern embankment within the project boundary Richmond River within the project boundary	Concrete pours of bridge columns from south to north	Quality Weather	5am – 7am Monday to Friday 6pm – 10pm Monday to Friday 6am – 8am Saturday	Intermittent work. One to six times a week (April - July)	Noise (low) Lighting
Northern embankment within the project boundary (pier 5 – 25)	Concrete pours of bridge headstocks from south to north			Intermittent work. One to six times a week (April - August)	
Richmond River within the project boundary (pier 16 - 24)	Concrete pours of pile cap infill			Intermittent work. One to six times a week (May - July)	
Southern embankment within the project boundary (span 1 -15)	Concrete pours of bridge decks			Intermittent work. One to six times a week (April - July)	
Northern embankment within the project boundary Southern embankment within the project boundary (Bridge abutments)	Concrete pours of the sill beams at bridge abutments			Intermittent work. Once a week in April and June	