



Australian Government

BUILDING OUR FUTURE



week starting 30 October 2017

Oversize and over mass deliveries for the new bridge over the Richmond River for the Woolgoolga to Ballina Pacific Highway upgrade

The Australian and NSW governments are jointly funding the \$4.36 billion Woolgoolga to Ballina Pacific Highway upgrade. Roads and Maritime Services Pacific Highway Project Office and Pacific Complete are working together to deliver the project.

The Woolgoolga to Ballina Pacific Highway project team is building a new bridge over the Richmond River at Broadwater.

To build the bridge, the project team is transporting large concrete pieces along the Pacific Highway from Macksville to Broadwater. More than 200 large precast concrete components will be delivered and stored at the project site before they are lifted into place to build the bridge.

When the movement of the oversize and over mass deliveries are being carried out there may be some delays and road users should consider this when planning their journeys.

Deliveries

To help keep the community and stakeholders informed about upcoming deliveries, we have provided a map of the delivery locations.

The delivery of precast concrete components will start in late October with the arrival of the first bridge girders and continue until mid-2018.

In November, two bridge girders – about 38 metres long – will be delivered from Monday to Saturday to the new bridge over Richmond River project site.



Bridge girder



Bridge headstock



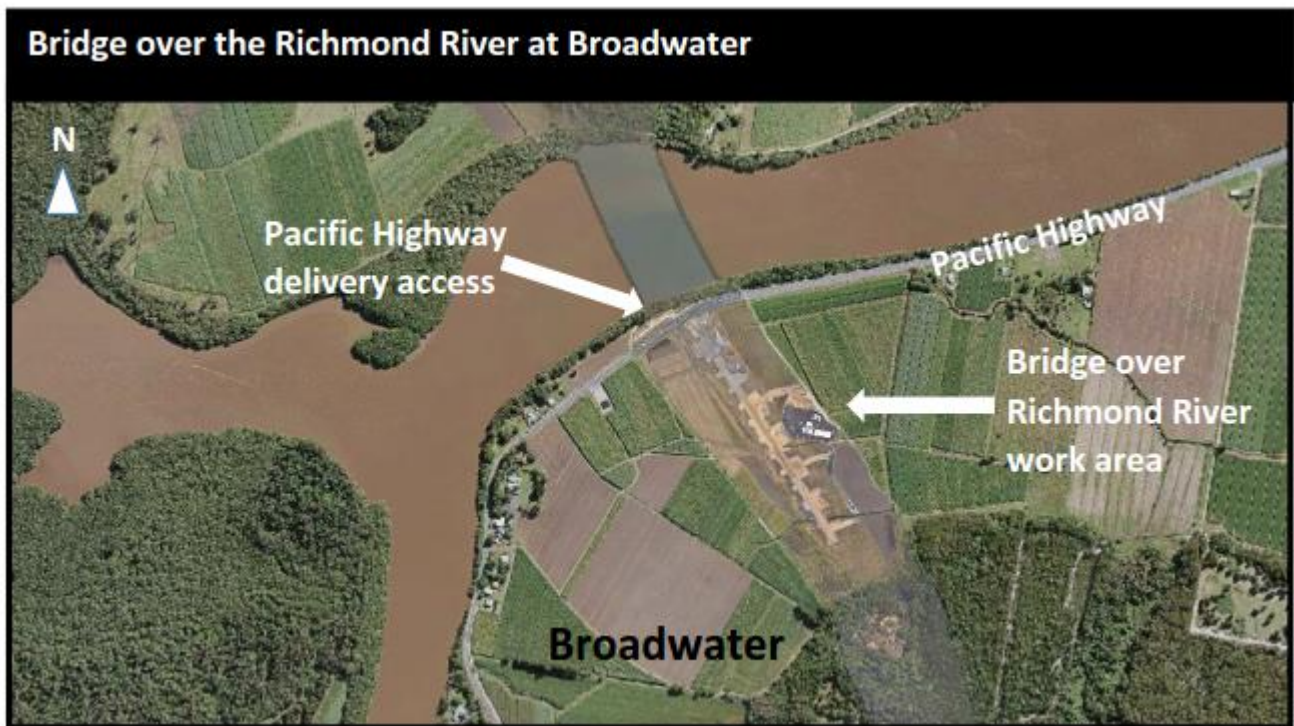
Bridge parapet

For more information

Other ways to stay informed about oversized vehicle movements for the Woolgoolga to Ballina Pacific Highway upgrade include:

- Visit our webpage rms.nsw.gov.au/w2b
- Register for SMS or email alerts by phoning the project team on 1800 778 900 or emailing W2B@pacificcomplete.com.au
- Look out for messaging on electronic message boards along the road
- Visit the Woolgoolga to Ballina Project Information Centre, 21 Prince Street, Grafton.

We apologise for any inconvenience and thank you for your patience during this important work.



If you need help understanding this information, please contact the Translating and Interpreting Service on 131 450 and ask them to call us on 1800 778 900.