



Australian Government

BUILDING OUR FUTURE



June 2017

Start of work – compound site and work area for new bridge over the Richmond River at Broadwater

The Australian and NSW governments are jointly funding the \$4.36 billion Woolgoolga to Ballina Pacific Highway upgrade. Roads and Maritime Services Pacific Highway Office and Pacific Complete are working together to deliver the project.

The Woolgoolga to Ballina project team will be building several significant bridges along the 155-kilometre route for the upgrade. This includes a new bridge over the Richmond River about one kilometre north of Broadwater.

The new bridge over the Richmond River will be about 980 metres long and is an elevated structure being about 6.5 metres at its lowest point and rising to about 13 metres at the point where it crosses the existing Pacific Highway. Over the river, each navigational span is a minimum clearance of 35 metres wide and 15 metres high. The new bridge will have 26 spans with a typical span length of about 38 metres with nine girders per span.

We have included a map to show the location of the site.

Indicative start dates of work to be carried out during 2017 for the new bridge over the Richmond River, weather permitting, includes:

- June – building the compound site, heavy duty pads and tracks
- July – establishing site offices
- August – building wharves
- September – installing piles
- November – installing girders.

Compound site

In April the project team asked for feedback on building and working at the compound site, which is located about one kilometre north east of Broadwater. We also met with landowners and held a community drop-in session about the compound site and the new bridge over the Richmond River at Broadwater.

We will start work to build the compound site from mid-June and this will take about three months, weather permitting. The site compound will be operational for about two and a half years and the site will be rehabilitated after the project is complete, in line with the project's Conditions of Approval.

Work to be carried out

Having obtained the necessary approvals, establishing the compound site, access to the work area, laydown areas and wharves will start from Wednesday 21 June, weather permitting, and involve:

- Removing vegetation
- Building temporary offices, amenities and parking areas for staff and trucks
- Installing work pads for cranes and piling rigs at each pier location
- Delivering and installing precast elements including pilecaps, headstocks and girders.

Upcoming work between Woodburn and Broadwater

Work is being carried out to build a service road next to the existing highway between Woodburn and Broadwater through the Broadwater National Park. In areas directly north and south of the new service road the project team is required to protect the Oxleyan Pygmy Perch (OPP), an endangered native fish species. To do this, soft soil work will be carried out from June to September before the OPP spawning season starts in October.

Work to be carried out includes:

- Installing environmental controls and boundary fencing
- Removing vegetation, stripping topsoil and stockpiling it for reuse in landscaping
- Installing three temporary waterway crossings including over McDonalds Creek and Montis Gully
- Placing foundation treatments, drainage rock and installing wick drains
- Hauling and placing fill material for embankments.

How will this affect you

We will try to minimise impact on residents, motorists and marine users during this work. Access to residents' properties will be maintained and traffic control will be in place where required.

A channel will always remain open for marine users. Marine operators are advised to take care when navigating near the work and reduce speed to four knots when within 100m of the work area

Upcoming traffic changes

There will be temporary changes in the speed limit to the north of Broadwater and additional construction traffic on the roads, including Back Channel Road. This will include heavy and overlength vehicles delivering bridge girders. Due to the length of the girders, each delivery will be accompanied by pilot vehicles and police escorts and minor delays may be experienced as these vehicles enter the site.

We will be working under traffic control along the Pacific Highway as required, please keep to speed limits and follow the direction of traffic controllers and signs.

For the latest traffic updates call 132 701, visit livetraffic.com or download the Live Traffic NSW App

Work hours

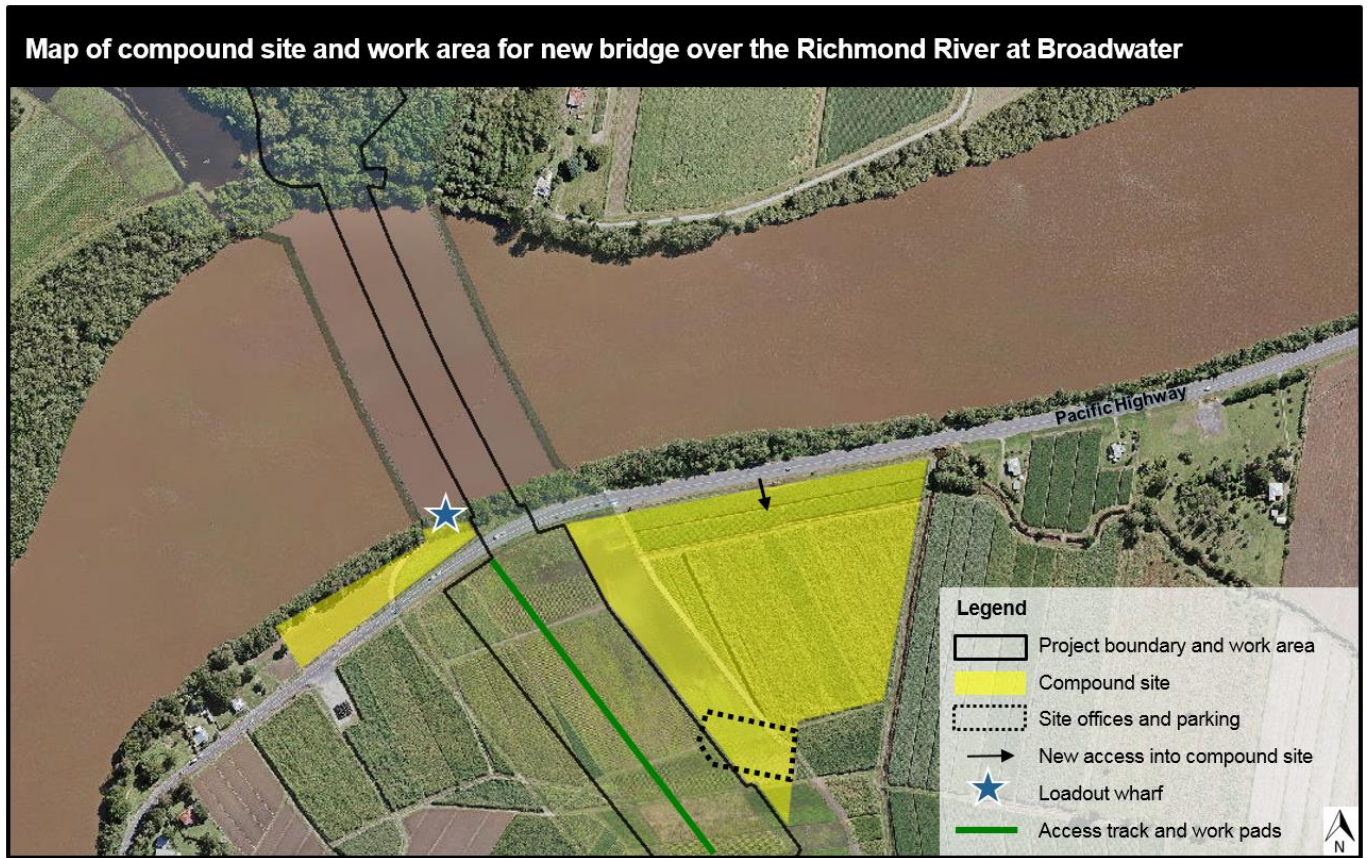
Typically work will be carried out from Monday to Friday between 7am and 6pm. We will also work on Saturday between 8am and 5pm as required.

Low noise impact activities which do not require heavy vehicles or plant may be carried out from Monday to Friday between 6am and 7am and 6pm and 7pm.

For more information

If you have any questions, please contact the Woolgoolga to Ballina project toll free line on 1800 778 900 dial 1, W2B@pacificcomplete.com.au or visit the project website rms.nsw.gov.au/W2B.

We apologise for any inconvenience and thank you for your patience during this important work.



If you need help understanding this information, please contact the Translating and Interpreting Service on 131 450 and ask them to call us on 1800 778 900.