



Artists impression of the new bridge over the Richmond River

Richmond River to Ballina Bypass

Woolgoolga to Ballina community update – January 2017

The Australian and NSW governments are jointly funding the \$4.36 billion Woolgoolga to Ballina Pacific Highway upgrade. Roads and Maritime Services Pacific Highway Office and Pacific Complete are working together to deliver the project.

IN THIS UPDATE

- Koalas
- Threatened species
- Early work



Wardell Road koala fence

Koalas

We take our obligations to protect the environment very seriously and want to work with stakeholders and the community to get the best outcome for the koala and the project.

What work have we done?

Some of the work we have started includes:

- Installed koala awareness signs in the Pimlico, Wardell and Coolgardie areas
- Engaged a contractor to carry out koala predator control targeting wild dogs, foxes and cats
- Collected seeds and planted tube-stock for Koala food trees
- Implemented the Koala Zero Harm program (see the back page for more information) to induct and train our contractors' staff in koala awareness and management and engaging an ecologist with suitable experience in koala handling to check for the presence of koalas before clearing activities and throughout the work.

What happens next?

Some of the work we have coming up includes:

- Installing temporary fencing to prevent koalas entering work areas
- Installing permanent fencing to prevent koalas strikes on local roads
- Continuing to plant trees to provide koala habitat and food
- Collaring trees to encourage koalas to relocate to adjacent habitat area
- Started koala monitoring program
- Maintaining koala awareness signs at Pimlico, Wardell and Coolgardie
- Continuing koala predator control targeting wild dogs, foxes and cats.

Continuing to deliver the Koala Zero Harm program (see the back page for more information) to induct and train our contractors' staff in koala awareness and management and engaging an ecologist with suitable experience in koala handling to check for the presence of koalas before clearing activities and throughout the work.

Management plans

The project's management plans involve a range of measures for protecting koalas, including:

- Fully fencing along about 16 kilometres of the new highway in section 10

- Installing 26 wildlife crossings – which is about one crossing every 500 metres
- Fencing parts of the existing Pacific Highway and nearby local roads to further reduce mortality from road strikes
- Implementing a predator control program on local biodiversity offset properties
- Planting at least 130 hectares of new koala habitat in the area
- Conducting comprehensive pre-clearing surveys to identify koalas within the construction corridor
- Using a staged approach to vegetation clearing by collaring trees to encourage safe and voluntary movement of koalas into adjacent habitat before clearing starts
- Training construction workers in koala requirements
- Having an experienced and licensed wildlife carer/ ecologist on site to supervise clearing activities
- Installing koala awareness signage and reducing speeds on local roads in koala hotspots during major work
- Implementing a comprehensive monitoring program.

Threatened species

We are committed to minimising impacts on threatened species and will continue to apply our experience and success in ensuring the highest level of biodiversity protection.

Some of the work we have started includes:

- Translocated threatened flora species including rainforest trees and Hairy Joint Grass to conserve them
- Installed nest boxes to provide habitat for fauna including possums, gliders, cockatoos, parrots, forest owls and microbats.

Looking forward, our continuing work includes installing nest boxes to provide habitat for fauna including possums, gliders, cockatoos, parrots, forest owls and microbats.

Early work

We are currently carrying out early construction work for the Pacific Highway upgrade between Richmond River and the Ballina Bypass. Some of this work includes soft soil which forms the foundation of the road. This work will continue in early 2017 to ensure the corridor is ready for major construction work to start this year.



Proposed site compound at McAndrews Lane, Pimlico

What work have we done?

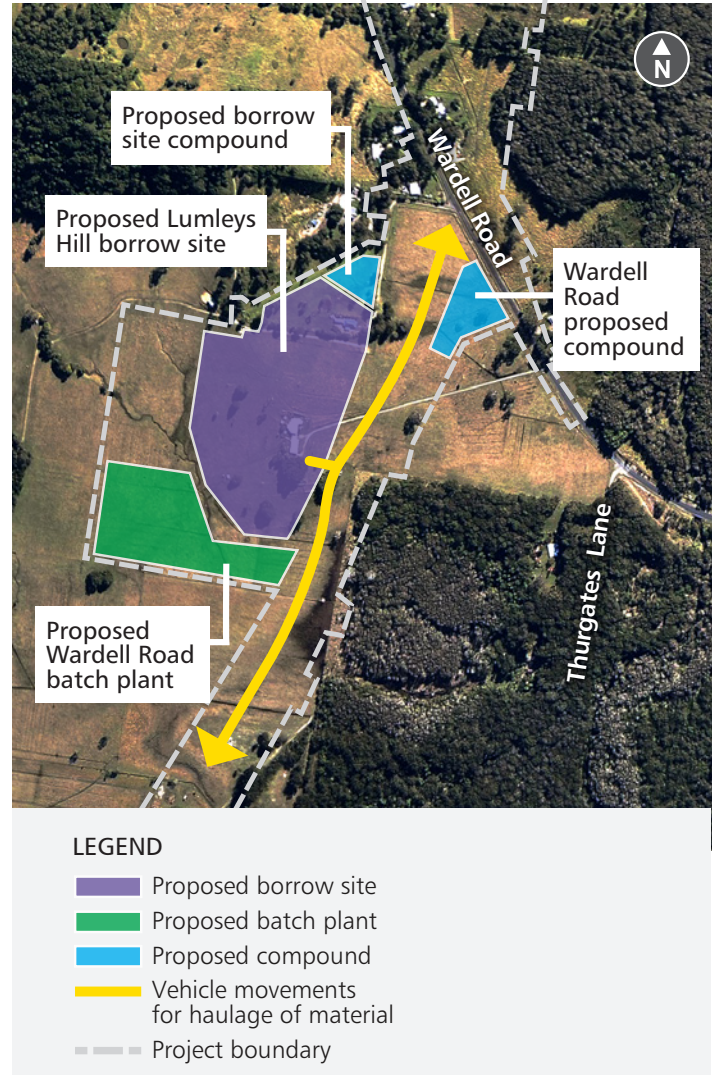
Some of the work we have started includes:

- Planted grass to revegetate the soft soil work at Pimlico and stabilise embankments
- Installed equipment to monitor dust and noise levels and water quality
- Removed and temporarily stockpiled topsoil and vegetation
- Carried out geotechnical and environmental surveys
- Installed construction corflute cutouts to protect the instruments measuring ground settlement
- Carried out building condition surveys at specific properties
- Started installing temporary fauna fence, vegetation clearing, and utilities relocations.

What happens next?

Some of the work we have coming up includes:

- Clearing vegetation and relocating power, water and telecommunications services (ongoing)



Proposed site compound, batch plant and borrow site at Lumleys Hill, Wardell

- Removing built structures on residential properties which have been acquired for the project (mid-February)
- Early work for construction facilities (early February)
- Building ancillary site compound facilities, Wardell Road (May)
- Building site compound facilities, Whytes Lane (early February)
- Preparing the ancillary and borrow sites (May)
- Upgrading local intersections at Carlisle Street and the Pacific Highway and at Bath Street, Wardell (mid-February)
- Carrying out additional noise (mid 2017) and dust monitoring (ongoing)
- Reducing speed limits on local roads for the safety of motorists and wildlife.

Site management during the holidays

To manage dust during the shutdown period we:

- ✓ Use a soil binder on exposed earth
- ✓ Spray areas with fertiliser and seeds encouraging grass growth
- ✓ Cover areas with fabric

To ensure your safety please stay out of work sites during the shutdown period. We will be monitoring **1800 778 900** and **w2b@pacificcomplete.com.au** during this time, with a team on standby to respond to your concerns



Dust will be managed over the **holiday period**

Project progress

- ✓ 26 kilometres of the upgrade on track to open late 2017
- ✓ More than \$1 billion worth of contracts tendered
- ✓ More than 1000 people working to deliver the Woolgoolga to Ballina upgrade
- ✓ More than two million project hours worked
- ✓ About 177 Olympic size swimming pools of earth moved
- ✓ 18 kilometres of borehole drilling using 15 drilling rigs
- ✓ More than 2000 kilometres of wick drains installed as part of soft soil treatment



more than **1000+** people working



more than **26km** of road to open in 2017

Targeting koala zero harm during construction

All staff will be trained about koalas in our project area, how we manage construction to reduce the impact of our work and what to do if they spot a koala. More than 260 employees have been inducted since mid-November. To manage the impact on the koala during the operation of the highway:

- ✓ Installing 26 wildlife connectivity structures – about one structure every 500 metres
- ✓ Installing completely closed fencing along the new highway and additional fencing on existing highway and local roads where koalas are active
- ✓ Planting 130 hectares of koala feed trees



260+ employees inducted

Looking out for emus

To manage the impact of the project we are:

- ✓ Monitoring emu activity using aerial survey, ground surveys and satellite tracking
- ✓ Installing emu fences so emus become used to the crossing zones before the highway opens
- ✓ Monitoring fence types and locations
- ✓ Training staff working in areas with emus about fencing, monitoring and managing emus on site
- ✓ Installing signs to alert motorists of emu activity



Manage environmental impacts from road projects

Contact us

For more information about the project, please contact us:

☎ 1800 778 900 (toll free) @ W2B@pacificcomplete.com.au 🌐 www.rms.nsw.gov.au/W2B

Privacy

Roads and Maritime Services ("RMS") is subject to the *Privacy and Personal Information Protection Act 1998* ("PIIP Act") which requires that we comply with the Information Privacy Principles set out in the PIIP Act. All information in correspondence is collected for the sole purpose of assisting in the assessment of this proposal/ delivering this project. The information received, including names and addresses of respondents, may be published in subsequent documents unless a clear indication is given in the correspondence that all or part of that information is not to be published. Otherwise RMS will only disclose your personal information, without your consent, if authorised by the law. Your personal information will be held by RMS at 76 Victoria St, Grafton NSW. You have the right to access and correct the information if you believe that it is incorrect.



January 2017
RMS 16.???



Transport
Roads & Maritime
Infrastructure