



Australian Government

BUILDING OUR FUTURE



Aerial view of soft soil work undergoing settlement, Pimlico

Richmond River to Ballina Bypass

May 2017

The Australian and NSW governments are jointly funding the \$4.36 billion Woolgoolga to Ballina Pacific Highway upgrade. Roads and Maritime Services Pacific Highway Office and Pacific Complete are working together to deliver the project.

IN THIS UPDATE

- What work have we done?
- Upcoming work
- Pimlico to Teven Stage 3
- Koala Management
- Lumleys Hill site compound and borrow site work starts soon
- Koala fencing starts soon
- Innovation – Yellow line trial
- Safer travel on rural roads
- Lowering speeds to help protect koalas

What work have we done?

Some of the work we have started includes:

- installed equipment to monitor dust and noise levels and water quality
- started installing temporary and permanent fauna fencing and koala food tree revegetation
- carried out geotechnical and environmental surveys
- carried out building condition surveys at specific properties
- carried out utilities relocations.

Upcoming work

Some of the work we have coming up in the next three months includes:

- continuing removing pockets of vegetation for utilities relocation
- removing built structures on residential properties which have been acquired for the project
- starting early work for site compound facilities
- building the site compound on Wardell Road
- building the site compound on Whytes Lane
- preparing the work lay down areas and borrow sites
- upgrading intersections at Carlisle Street and the Pacific Highway and at Bath Street, Wardell
- carrying out additional noise monitoring in mid 2017 and continuing dust monitoring
- reducing speed limits on local roads for the safety of motorists and wildlife
- starting consultation with residents at properties identified in the Environmental Impact Statement for at house noise treatment
- monitoring koala population and starting phased resource reduction work.

For activities that require access to private property, the Woolgoolga to Ballina project team will contact landowners to seek approval to enter. Thank you for your cooperation and assistance while we carry out this important work.



Pockets of vegetation are being cleared for utilities relocation

Pimlico to Teven stage three starts soon

Work on the final stage of the Pimlico to Teven section of the highway is starting soon.

Georgiou Group has been awarded the contract to deliver bridge and road work just south of the existing Ballina Bypass/Bruxner Highway interchange.

As part of this project, the existing bridges over Duck Creek and Emigrant Creek, which are currently not being used, will be removed. The current traffic arrangement will remain in place for the majority of stage three construction work. This will ensure the safety of workers and minimise disruptions and delays for road users.

Work to be carried out up to end May 2017, weather permitting, includes:

- establishing sediment and erosion controls
- building site compound facilities and associated access and car parking
- building site accesses and gates
- starting vegetation clearing
- starting earthwork and soft soil treatment
- starting removal of the current bridges over Duck Creek and Emigrant Creek.

Please keep to speed limits and follow the direction of traffic controllers and signs. For the latest traffic updates, you can call 132 701, visit livetraffic.com or download the Live Traffic NSW app.

Thank you for your patience during this important work.

Devils Pulpit to Ballina hydrological mitigation report update

The Devils Pulpit to Ballina hydrological mitigation report will be made available during May. This report sets out the flood management objectives and how the project has and will continue to reduce the impacts of flooding in the Richmond River catchment. Your feedback has been considered and addressed in this report. We thank everyone for their involvement during the flooding assessment development. As part of the report's release, we will be holding community drop in sessions during May to discuss the report and respond to any questions or concerns you may have. We will be in touch to confirm locations and dates for these sessions.

Koala management

We take our obligations to protect the environment seriously and continue to build relationships with stakeholders and the community to get the best outcome for the koalas in this area while we build the new highway and into the future.

What work have we done?

Since our last update we have:

- met with individual landowners to finalise plans for installing koala fencing
- engaged a contractor to install koala fencing
- continued inducting our staff and contractor staff in the Koala Zero Harm program (see the back page for more information)
- continued koala predator control targeting wild dogs, foxes and cats
- continued to plant trees to provide koala habitat and food
- met with our internal and external stakeholders to provide information

- implemented a blanket reduced speed policy for construction vehicles in the Wardell to Coolgardie area, with further reductions in known koala 'hot-spots'.
- 'Watch out koalas about' mobile signage installed to increase road user awareness.



Our predator control program is helping protect koalas

What happens next?

Some of the work we have planned in the next three month includes:

- installing temporary fencing to prevent koalas entering work areas
- installing permanent fencing to prevent koala strikes on local roads
- collaring trees to encourage koalas to relocate to adjacent habitat
- starting the koala monitoring program
- continuing to deliver the Koala Zero Harm program
- investigating the use of vehicle activated signage in known koala hot-spots in the area.

Lumleys Hill site compound, batch plant and borrow site update

In October 2016, the community was invited to consider the proposed project site compound, batch plant and borrow site (also known as ancillary facilities). We received comments from 30 people and organisations about the proposal. The project team was also invited to a meeting with some residents in the Meerschaum Vale area, who raised their concerns and received more information about the proposals and the project. This meeting was held 25 February 2017.

We appreciate the community's patience while the project team reviewed and prepared responses to show our plans to reduce impacts based on this feedback. The Woolgoolga to Ballina project team has responded directly to those people and organisations.

Woolgoolga to Ballina project will seek to build a site compound at Wardell Road however we will not be using Hillside Lane for access as part of this work. The site compound will be operational by mid-2017, weather permitting and is proposed to be used for about three years. It will be rehabilitated after the project is complete.

Roads and Maritime will seek to operate a borrow site at Lumleys Hill. We will use the site to supply quarry material for building the new road for about three years. The project team will ensure that the site is rehabilitated after the project is complete.

The project team will be producing management plans for the proposed site compound, batch plant and borrow site. These will each be submitted to the Department of Planning and Environment for approval. They will be reviewed against the Minister's Conditions of Approval to determine compliance.

The project team has decided not to build the batch plant for the initial phase of construction. Concrete for this work will be provided from an off-site location and will be transported to the site via trucks. A batch plant will be needed at this location, for about a year, as part of the second phase of construction due to the requirement for concrete operations to be in close proximity to the work. We will seek to operate a proposed concrete batch plant from mid-2018 to mid-2019 with building on site expected to start in early-2018 and demobilisation to finish in late-2019.

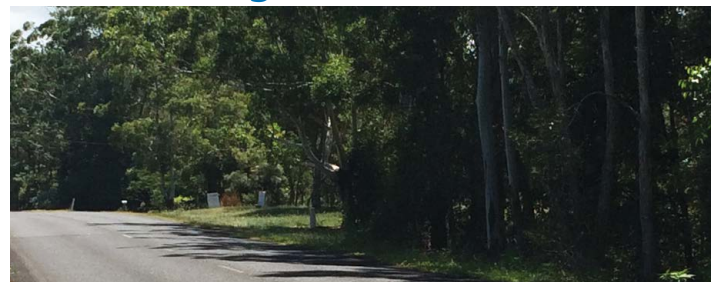
The project team will ensure that the site is rehabilitated after the project is complete, in line with the project's Conditions of Approval.

Subsequent to feedback received, the Woolgoolga to Ballina team has committed to review the extent of low noise wearing surface on this section of the highway. The project team will keep the community informed about the review process.

Roads and Maritime will continue to work with the community and stakeholders to mitigate and manage impacts of the work it needs to carry out to build the Woolgoolga to Ballina Pacific Highway upgrade.

A copy of the consultation report relating to the proposal is available on the project website at rms.nsw.gov.au/.

Koala fencing starts soon



Koala fencing work is starting soon on Wardell Road

The project team has been meeting with residents along Wardell Road to finalise designs for permanent koala exclusion fencing. Thank you to Wardell Road residents for your support with this work.

For the fencing we will remove small amounts of vegetation and then install a mesh and colourbond fence that prevents koalas climbing over it to enter the road reserve.

Fencing contractor Coleman Group has been engaged to build the fencing and we are working with residents now to arrange property access and schedule installation.

A notification about this work will be circulated shortly.

Innovation – Yellow line trial, Woolgoolga to Ballina

To improve the safety of road users and workers we are trialling a number of new ways to guide people through work zones and increase awareness of changed traffic conditions and speed limits. We are doing this because we understand changes to the road environment during construction change your experience of your journey.

Yellow lines will replace white lines at a number of temporary work zones near the existing highway to provide better guidance through work zones and raise awareness of changed conditions.

If you are travelling south from the Yamba Interchange and over the Clarence River bridge at Harwood or if you are travelling north from Farlow's Flat, just before the Clarence River bridge at Harwood, you should see the yellow line trail at Yamba Interchange with the Pacific Highway.

The yellow lines are marked for more than 1.2 kilometre between the Yamba Interchange and midway along Farlow's Flat.

Warning signs have been installed at either end of the trial section to let road users know they are entering and leaving the yellow line marked zone.

We need your feedback about travelling through the yellow line trial to help us understand if you think they are effective.

To be part of this important safety initiative please complete our five minute survey or visit www.rms.nsw.gov.au

Safer travel on rural roads

We recognise that travelling on unsealed rural roads is necessary to build the new highway. In this recent hot and dry weather, our team has taken steps to minimise dust around houses, as well as reinforce with our team and our contractors the importance of safe driving.

We will be installing construction traffic speed zones on unsealed roads to limit the potential for dust problems, and where heavy vehicles are operating, we are providing other dust mitigation measures to manage concerns. These zones will be near houses that are positioned close to unsealed roads.

As we start to build the new highway, we will provide you with more information about how we will manage travel on unsealed, rural roads so we can all stay safe.

The Woolgoolga to Ballina project team appreciates the community's support in continuing to manage road safety.

Lowering speeds to help protect koalas

As part of the Woolgoolga to Ballina project team's Koala Management Plan, motorists will be asked to reduce their speed in areas frequently used by koalas.

We are working with Ballina Shire Council to introduce permanent speed reductions of 80 kilometres/hour for all motorists on Old Bagotville Road and Wardell Road. Additional signage will be installed on the roadside so motorists are aware when the new speed limit comes into effect.

In an effort to prevent koala road strikes in the area, project vehicles will also be restricted to a maximum of 80 kilometres/hour on all roads in the Richmond River to Ballina bypass section (with the exception of the Pacific Highway).

The project team is committed to working with the community and stakeholders to ensure road safety and protect wildlife.



Zero harm to Koalas

Contact us

For more information about the project, please contact us:

 1800 778 900 (toll free)

 W2B@pacificcomplete.com.au

 www.rms.nsw.gov.au/W2B



If you need help understanding this information, please contact the Translating and Interpreting Service on **131 450** and ask them to call us on **1800 703 457**.

Privacy Roads and Maritime Services ("RMS") is subject to the *Privacy and Personal Information Protection Act 1998* ("PPIP Act") which requires that we comply with the Information Privacy Principles set out in the PPIP Act. All information in correspondence is collected for the sole purpose of assisting in the assessment of this proposal/ delivering this project. The information received, including names and addresses of respondents, may be published in subsequent documents unless a clear indication is given in the correspondence that all or part of that information is not to be published. Otherwise RMS will only disclose your personal information, without your consent, if authorised by the law. Your personal information will be held by RMS at 76 Victoria St, Grafton NSW. You have the right to access and correct the information if you believe that it is incorrect.

