



## Start of temporary concrete batch plant operations at Coldstream Road, Tyndale for the Woolgoolga to Ballina Pacific Highway upgrade

The Australian and NSW governments are jointly funding the Woolgoolga to Ballina Pacific Highway upgrade. Roads and Maritime Services, Pacific Complete and its contractor partners are working together to deliver the upgrade.

The Woolgoolga to Ballina project team is starting operation of a temporary concrete batch plant at Coldstream Road, Tyndale for paving between Bostock Road, Tucabia and Maclean from Monday 7 January 2018. This work will take about 12 months to complete, weather permitting.

The project team has also started operation of a plant at Avenue Road, Lavadia. We have included a map to show the location of this work and the temporary batch plants.

### Paving operations

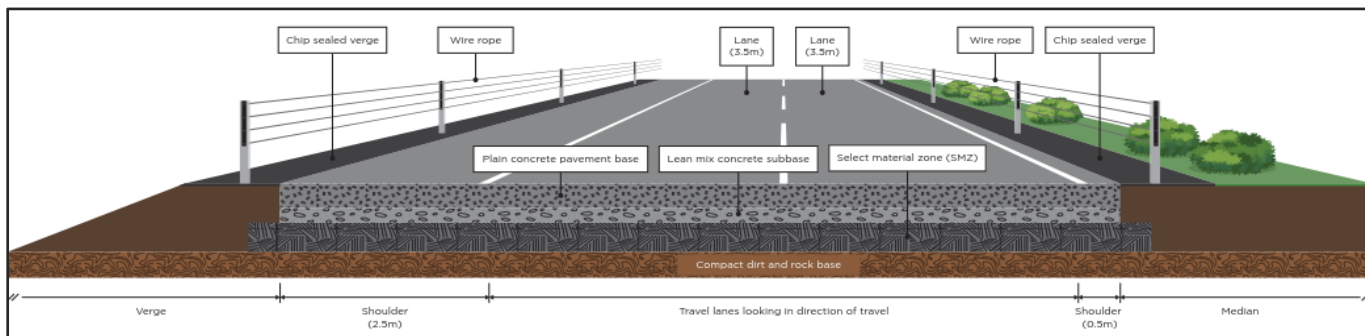
Concrete paving will be carried out in progressive stages involving the delivery, tipping, spreading, compacting and finishing of concrete sub-base and base layers. The finishing process will involve texturing the concrete surface, spraying it with a curing compound, saw cutting the base layer to create joints and sealing the joints with a silicone sealant.

Paving work between Glenugie to Maclean will involve:

- Delivering materials and set up of machinery
- Placing material and bitumen spray sealing
- Hauling concrete to site from batch plant locations
- Paving and sealing
- Pouring concrete on shoulders, verges, bridges and for drains
- Finishing the concrete including screeding, texturing and curing
- Cleaning and maintaining equipment
- Cutting concrete during and outside normal working hours.

Concrete paving typically involves three layers:

1. **The Select Material Zone (SMZ)** is the first layer in the pavement process and represents the point where all required earthworks have been completed. This layer of compacted gravel is topped with a bitumen spray seal.
2. **The sub base** makes up the second layer and involves placing a low strength concrete mix on top of the sealed SMZ layer and topping with a bitumen spray seal.
3. **The base** is the third and involves placing a thicker layer of unreinforced higher strength concrete, over the sub base concrete. The base layer is the final layer of concrete that becomes the travelling surface of the road.



## Batch plant operations

To produce concrete for about 47 kilometres of the upgrade between Glenugie and Maclean, temporary batch plants have and are being built at:

- **Avenue Road, Lavadia** – this will provide concrete for the southern section. Construction vehicles will access the Avenue Road batch plant via the Pacific Highway, Eight Mile Lane, Glenugie, Avenue Road and the western end of Wants Lane, Lavadia.
- **Coldstream Road, Tyndale** – this will provide concrete for the northern section. Construction vehicles will access the Coldstream Road batch plant via the Pacific Highway and along Coldstream Road, Tyndale.

Batch plant activities will include:

- Early morning start up and operation of the batch plant including equipment, machinery, conveyor belt alarms and generators
- Delivery and stockpiling of material such as gravel, sand, cement powder and fly ash including outside of normal working hours
- Materials being loaded into silos
- Concrete trucks for the delivery of concrete from the batch plant to sites along the alignment
- Cleaning and maintaining equipment and the plant.

## Example of a temporary concrete batch plant



## How we manage our work

The project team will use machinery that generates noise, light and vibration. To manage this work we will:

- Plan activities close to residents to coincide with normal working hours where possible
- Shield noise generating equipment, where required
- Direct light from lighting towers away from residences
- Turn off machinery when it is not in use
- Fit equipment with devices to minimise noise, such as reversing squawkers
- Service and maintain plant and equipment so they are in good working order
- Monitor noise so we can manage any potential impacts and adjust the work activity as required.

All work will be carried out in line with the project's Conditions of Approval and Construction Environmental Management Plan.

## Work hours

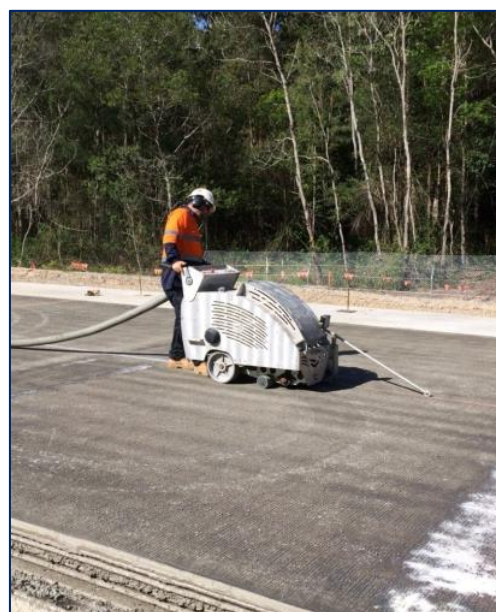
**Approved construction hours**  
Monday to Friday 7am–6pm  
Saturday 8am–5pm



In areas where residents live more than 200 metres from the work, extended approved work hours are allowed between 6am and 7am and 6pm and 7pm from Monday to Friday. No work will be carried on Sunday or a public holiday.

## Work outside of approved construction hours

For technical reasons, the project team may be required to carry out paving activities outside approved construction hours. We will contact directly impacted neighbours to confirm timing of out of hours activities including saw cutting, paving and batch plant operations.



Concrete saw cutting

## Traffic changes

There may be some temporary traffic changes and lane closures that may affect travel times. Please keep to speed limits and follow the direction of traffic controllers and signs. Motorists are encouraged to remember PAC – Plan, Awareness, Caution. For the latest traffic updates, you can call 132 701, visit [livetraffic.com](http://livetraffic.com) or download the Live Traffic NSW app.

We apologise for any inconvenience and thank you for your patience during this important work.

### Subscribe now

We can keep you up to date about what's happening in your area or if you are interested in a specific topic. Register your interest:

 1800 778 900 (toll free)

 [W2B@pacificcomplete.com.au](mailto:W2B@pacificcomplete.com.au)

### For more information

-  1800 778 900 (toll free)
-  [W2B@pacificcomplete.com.au](mailto:W2B@pacificcomplete.com.au)
-  [pacifichighway.nsw.gov.au](http://pacifichighway.nsw.gov.au)
-  Follow NSW Roads

If you need help understanding this information, please contact the Translating and Interpreting Service on 131 450 and ask them to call us on 1800 778 900.



# Start of concrete paving work and temporary concrete batch plant locations between Glenugie and Maclean

