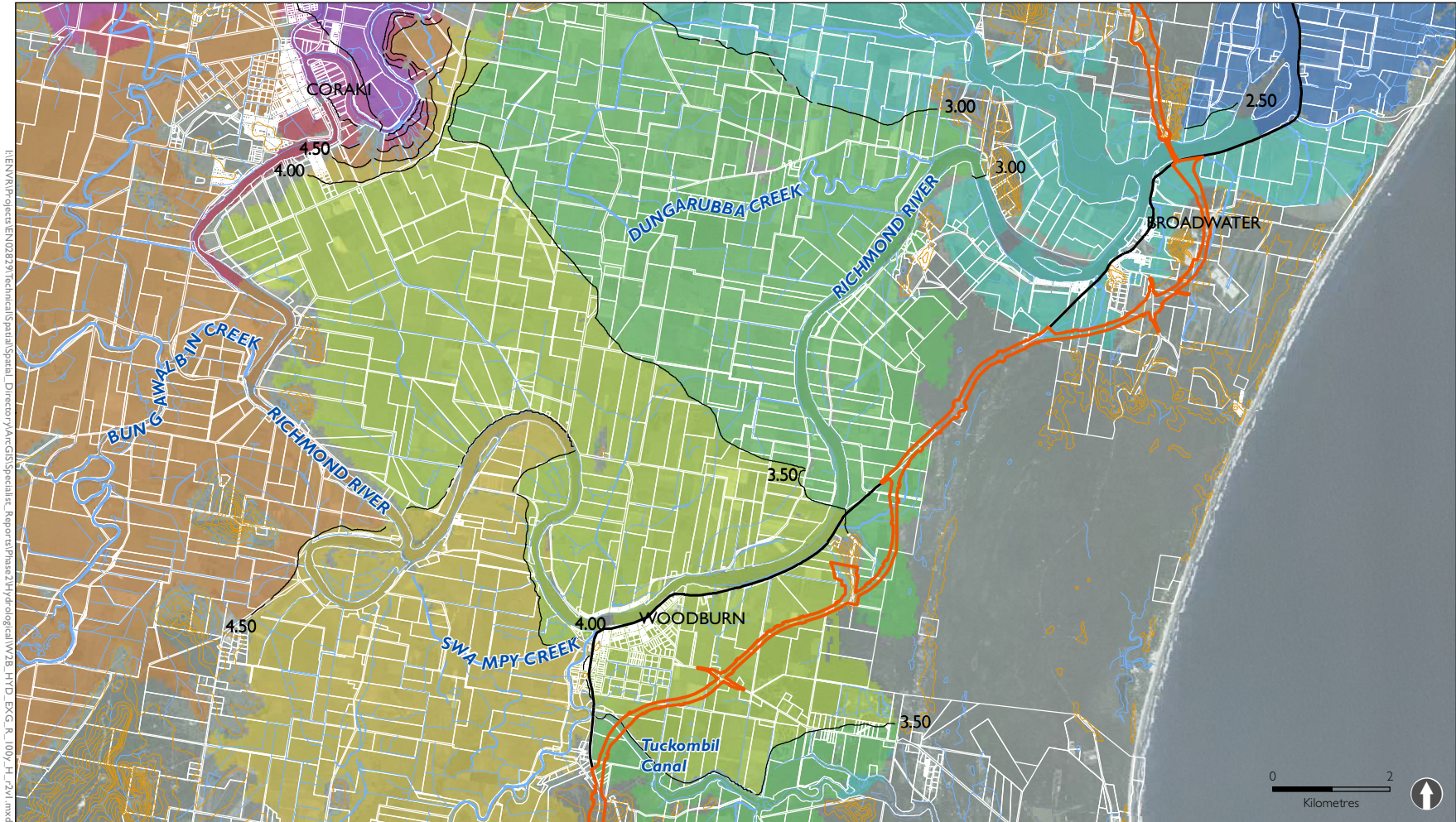


Figure 4-36 Peak 20 year ARI flood levels: Mid Richmond River



- The project
- Existing Pacific Highway
- 10m ground level contours (indicative)

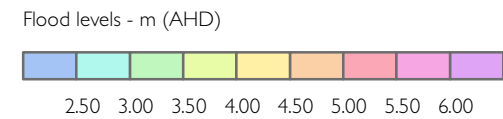
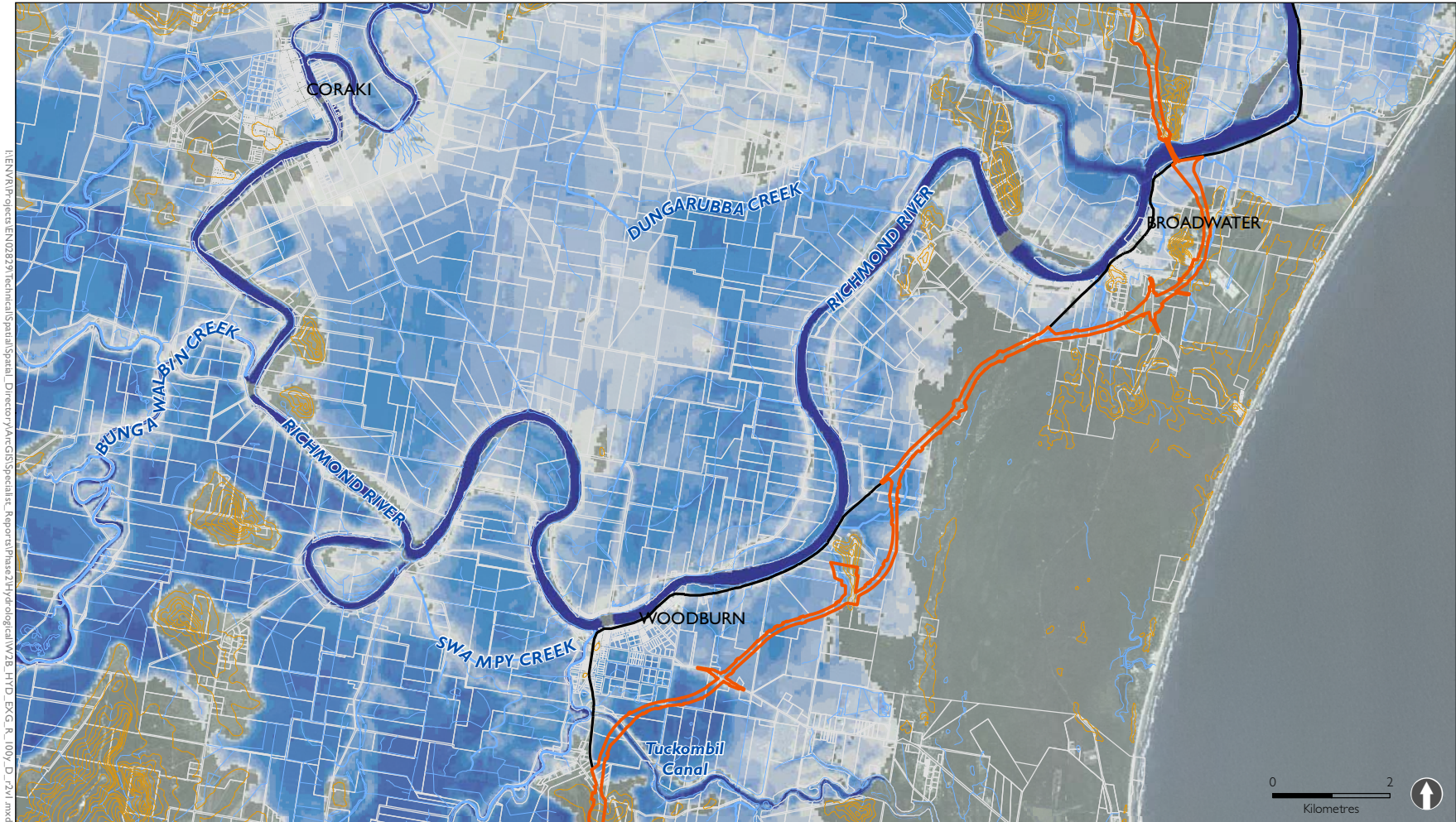





Figure 4-37 Peak 20 year ARI flood depths: Mid Richmond River



\\NENVA\Projects\EN028291\Technical\Spatial\Spatial_Directory\ArcGIS\Specialist_Reports\Phase2\Hydrological\W28_HFD_EXG_R_100y_D_r2\1.mxd

-  The project
-  Existing Pacific Highway
-  10m ground level contours (indicative)

Flood depths - m (AHD)

