

Figure G-10 Flood level plot locations: Clarence River at Chatsworth and Harwood islands



I:\ENVR\Projects\EN028291\Technical\Spatial\Spatial_Directory\ArcGIS\Specialist_Report\Phase2\Hydrological\EN028291_GIS_Hydro_F016_r2v1.mxd

Figure G-11 Flood level plot locations: Clarence River North Arm and Mororo Creek

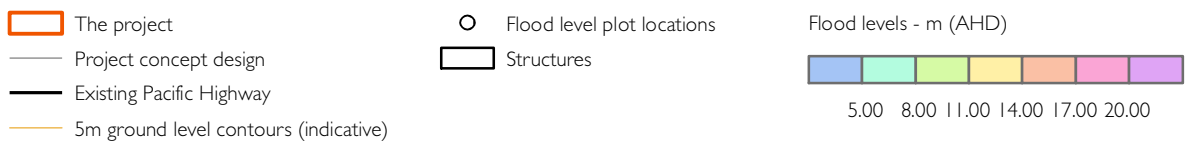
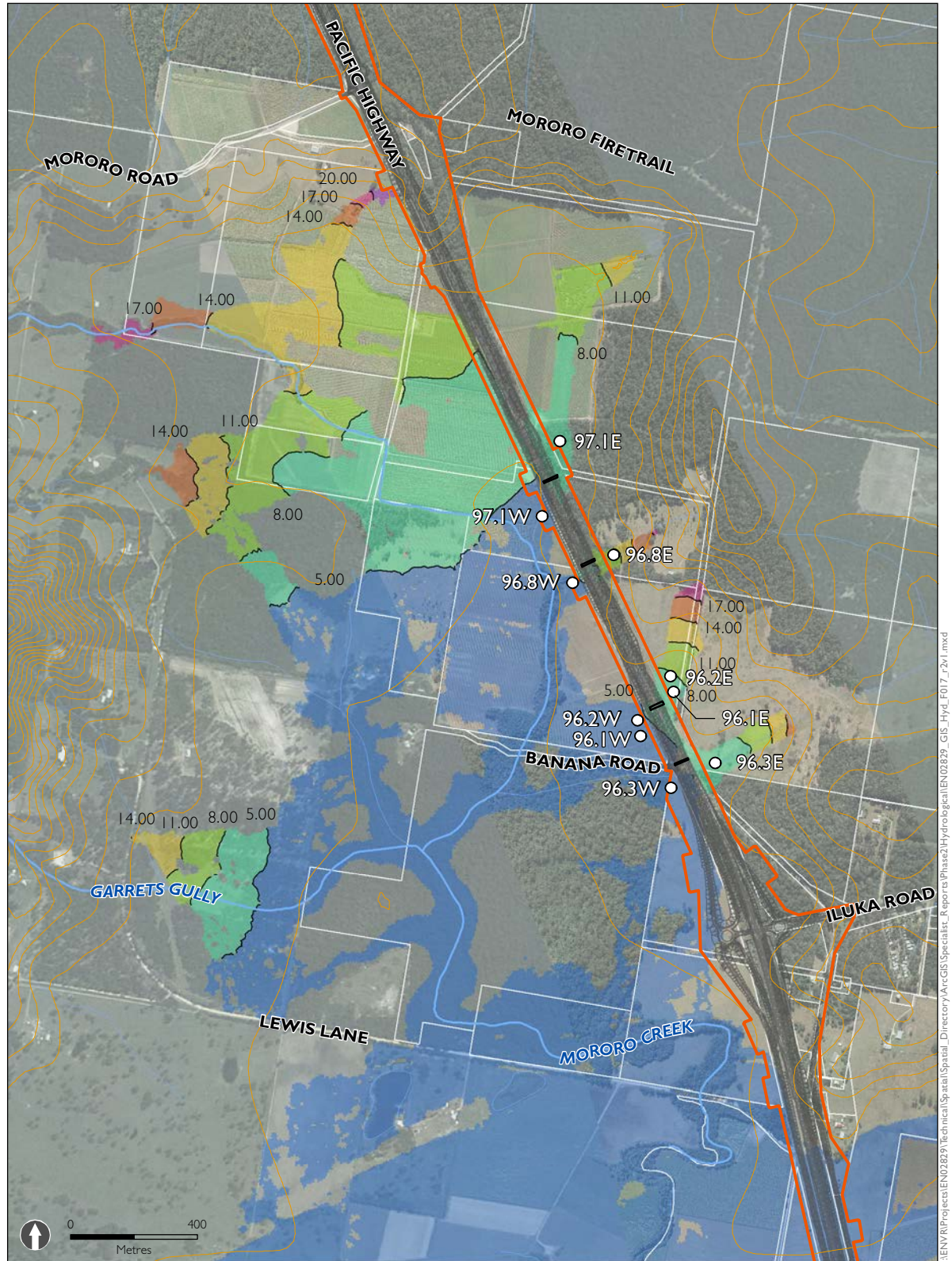
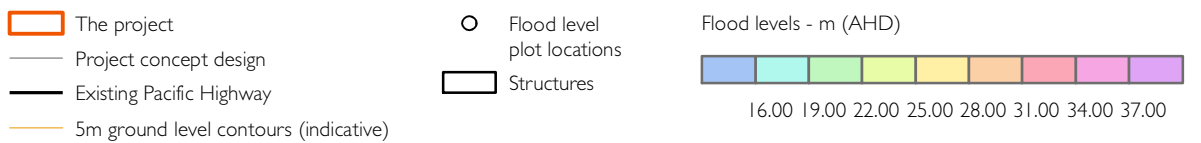
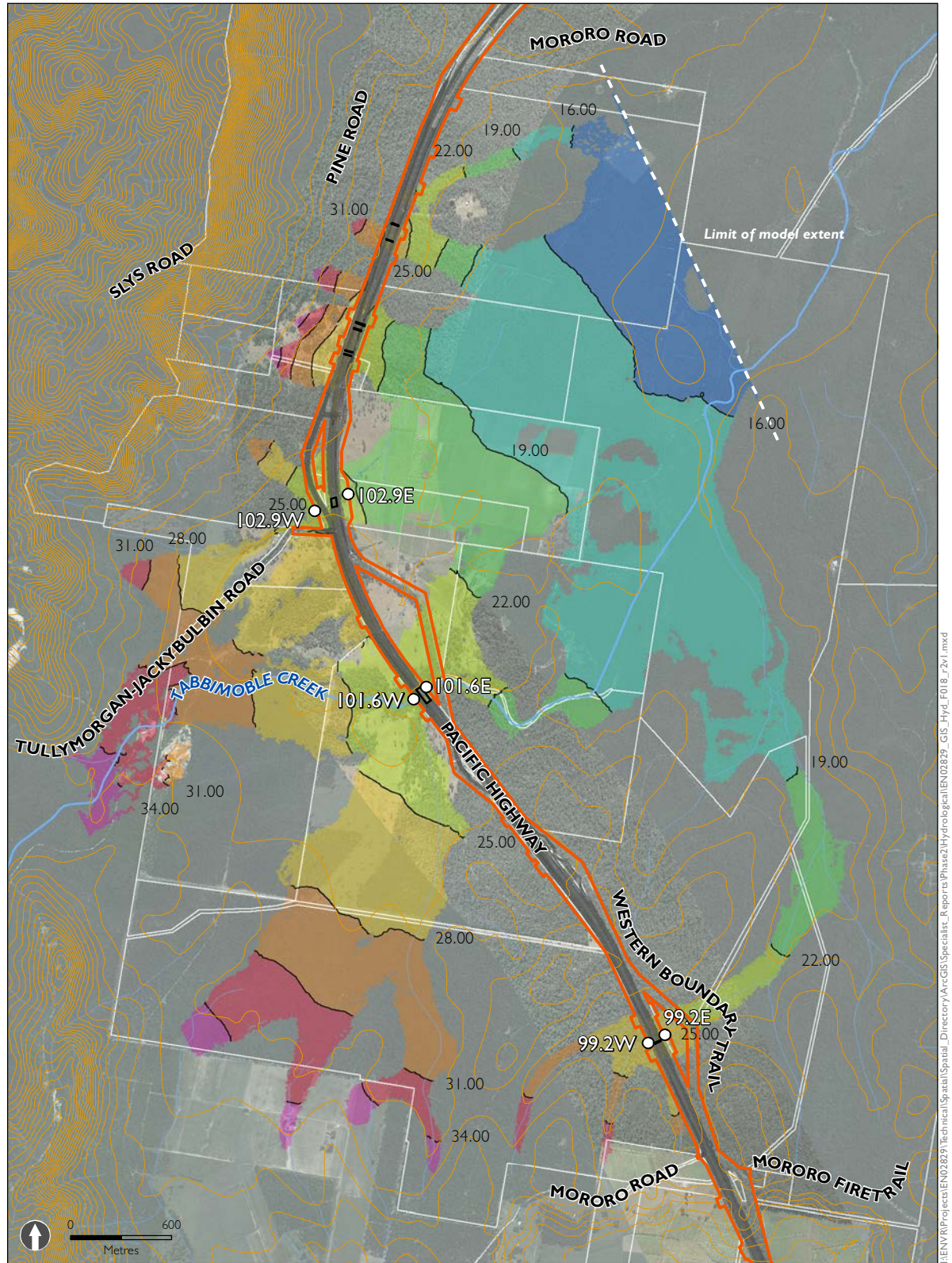
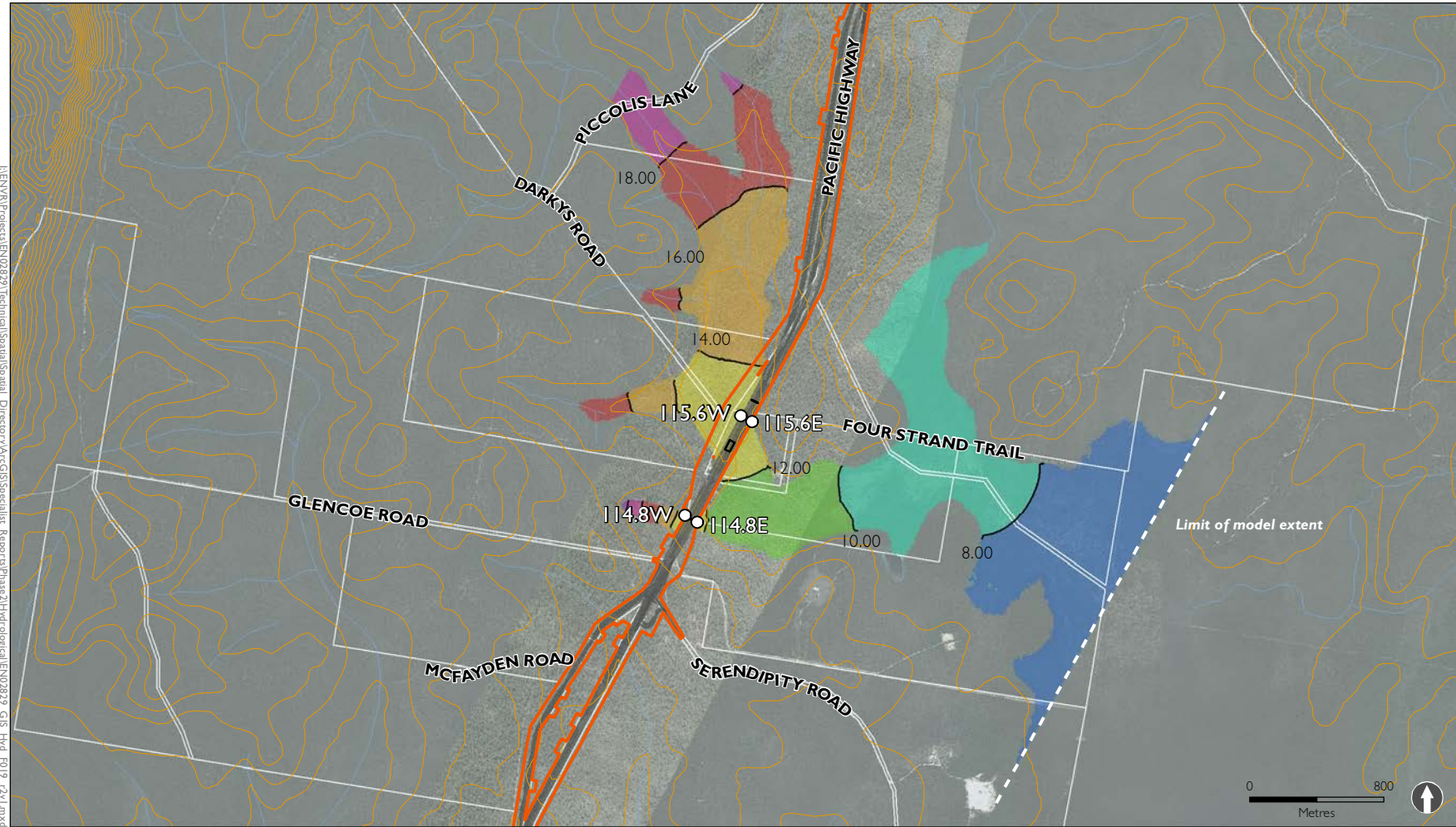


Figure G-12 Flood level plot locations: Tabbimoble Creek



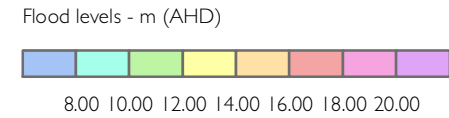
I:\ENVR\Projects\EN02829\Technical\Spatial_Spatial_Directory\ArcGIS\Specialist_Reports\Phase2\Hydrological\EN02829_GIS_Hyd_F018_r2v1.mxd

Figure G-13 Flood level plot locations: Tabbimoble Floodway No. 1



- The project
- Project concept design
- Existing Pacific Highway
- 5m ground level contours (indicative)

- Flood level plot locations
- Structures



I:\ENVR\Projects\EN028291\Technical\Spatial\Spatial_Directory\ArcGIS\Specialist_Reports\Phase 2\Hydrological\EN028291_GIS_Hydro_F019_r2v1.mxd

Figure G-14 Flood level plot locations: Oakey Creek

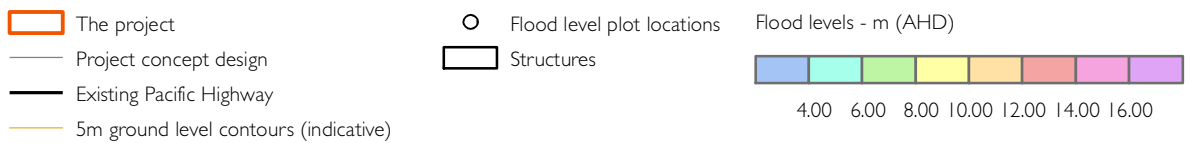
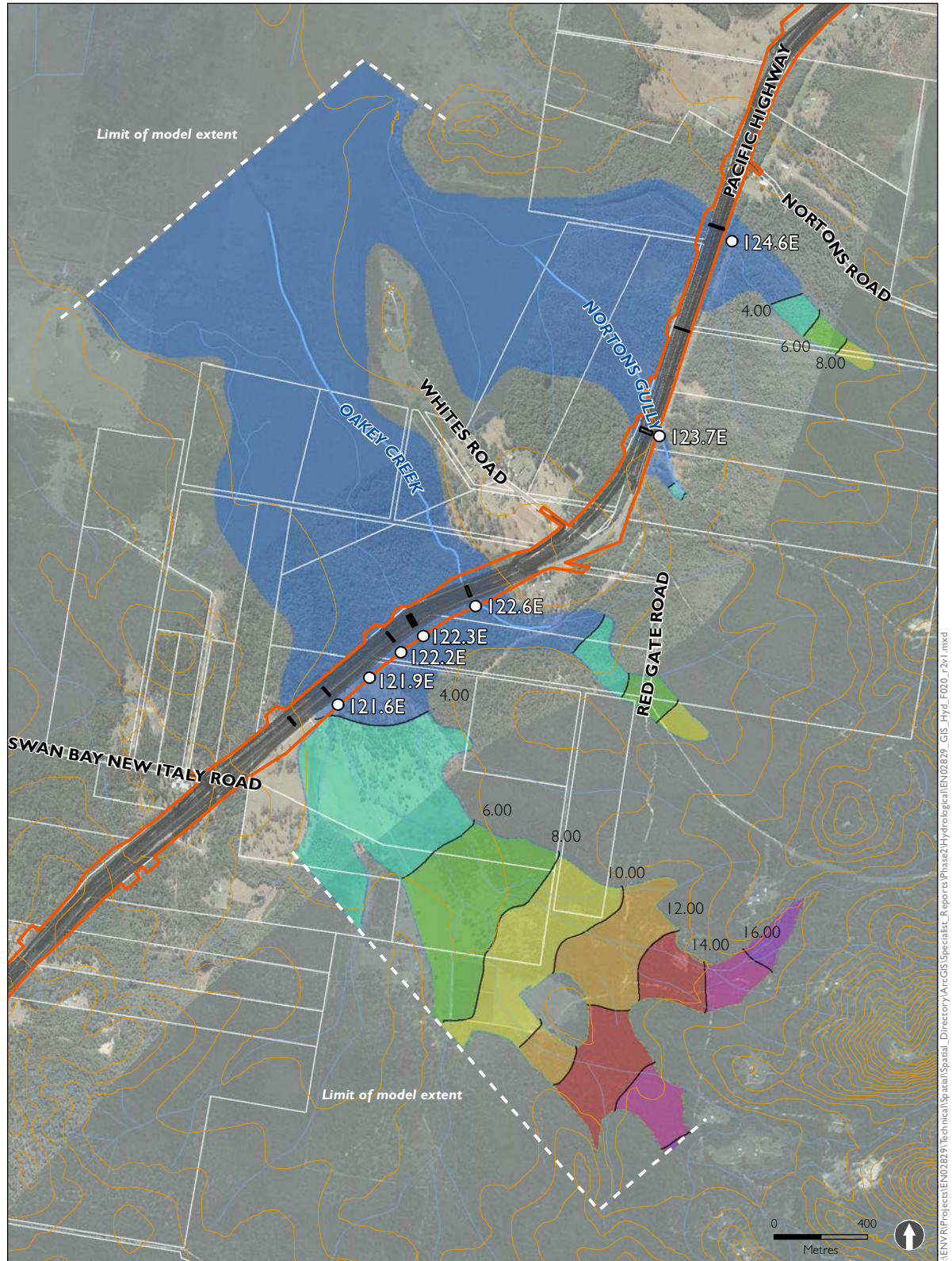
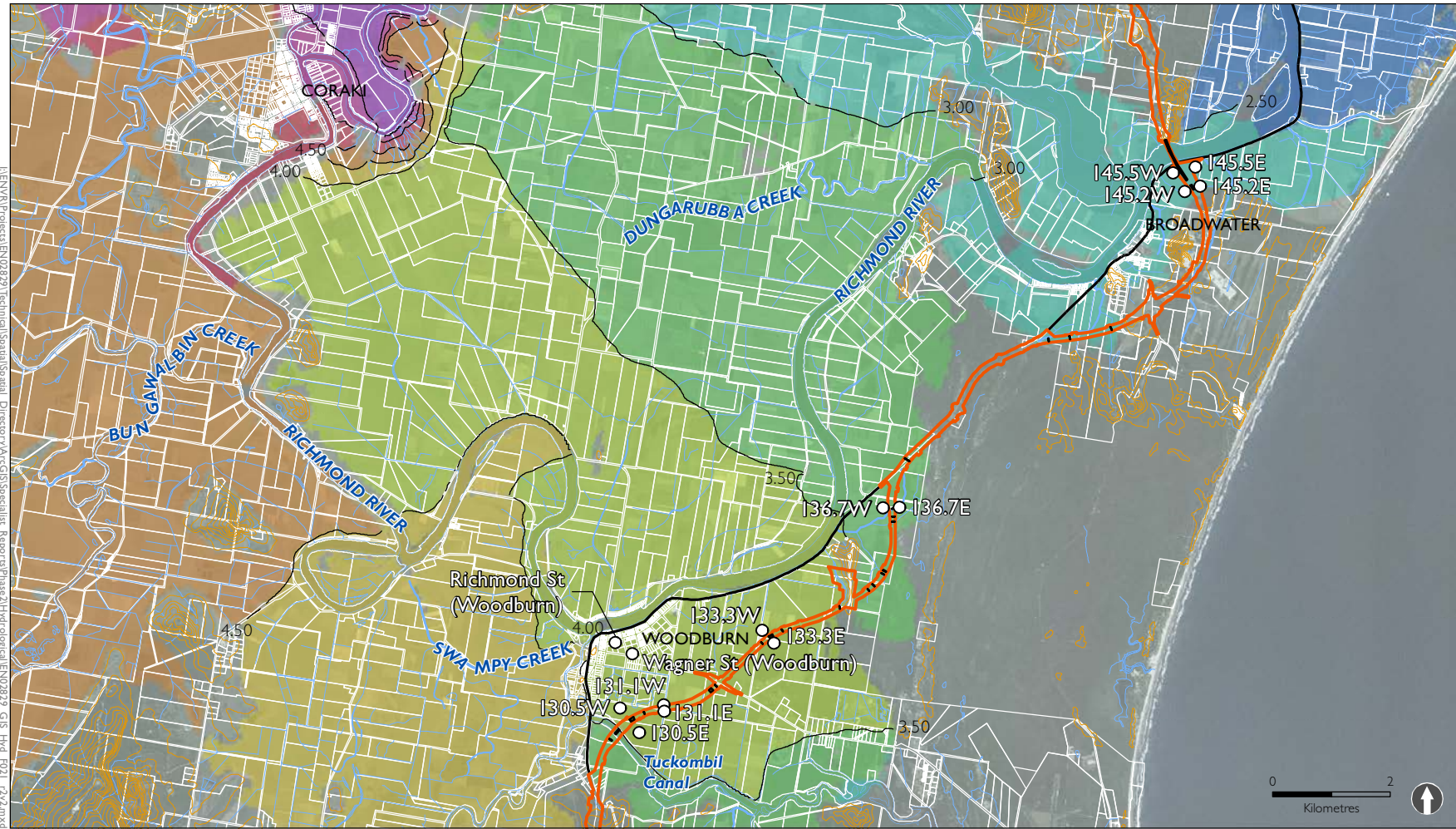


Figure G-15 Flood level plot locations: Mid Richmond River



- The project
- Existing Pacific Highway
- 10m ground level contours (indicative)
- Flood level plot locations

Structures

Flood levels - m (AHD)

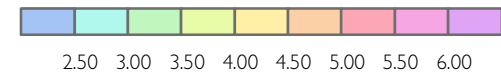


Figure G-16 Flood level plot locations: Lower Richmond River and Ballina

