

Appendix A – Operational figures 2026 night-time

Receiver Locations

Appendix A.1 Proposed operational mitigation - design year



- The project
- Upgrade completed to dual carriageway
- Upgrade under construction
- Potential low noise pavement (approximate) - subject to detailed design
- Receiver location
- Receiver location outside NCA
- Logger location

Upgrading the Pacific Highway - Woolgoolga to Ballina Upgrade

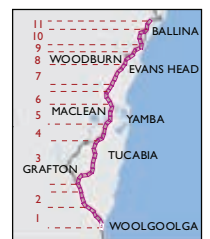


I:\ENV\RI\Projects\EN02829\Technical\Spatial\Directory\ArcGIS\Specialist_Reports\Phase2\Noise_and_Vibration\EN02829_GIS_NV_F001_r3v1.mxd



1:10,000

SHEET 1 of 52



Appendix A.2 Proposed operational mitigation - design year



- The project
- Upgrade completed to dual carriageway
- Upgrade under construction
- Potential low noise pavement (approximate) - subject to detailed design
- Receivers with proposed mitigation
- Receiver location
- Receiver location outside NCA
- Logger location

Upgrading the Pacific Highway - Woolgoolga to Ballina Upgrade

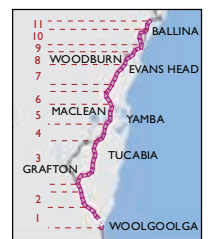


I:\ENVR\Projects\EN02829\Technical\Spatial\Directory\ArcGIS\Specialist_Reports\Phase2\Noise_and_Vibration\EN02829_GIS_NV_F001_r3v1.mxd



1:10,000

SHEET 2 of 52

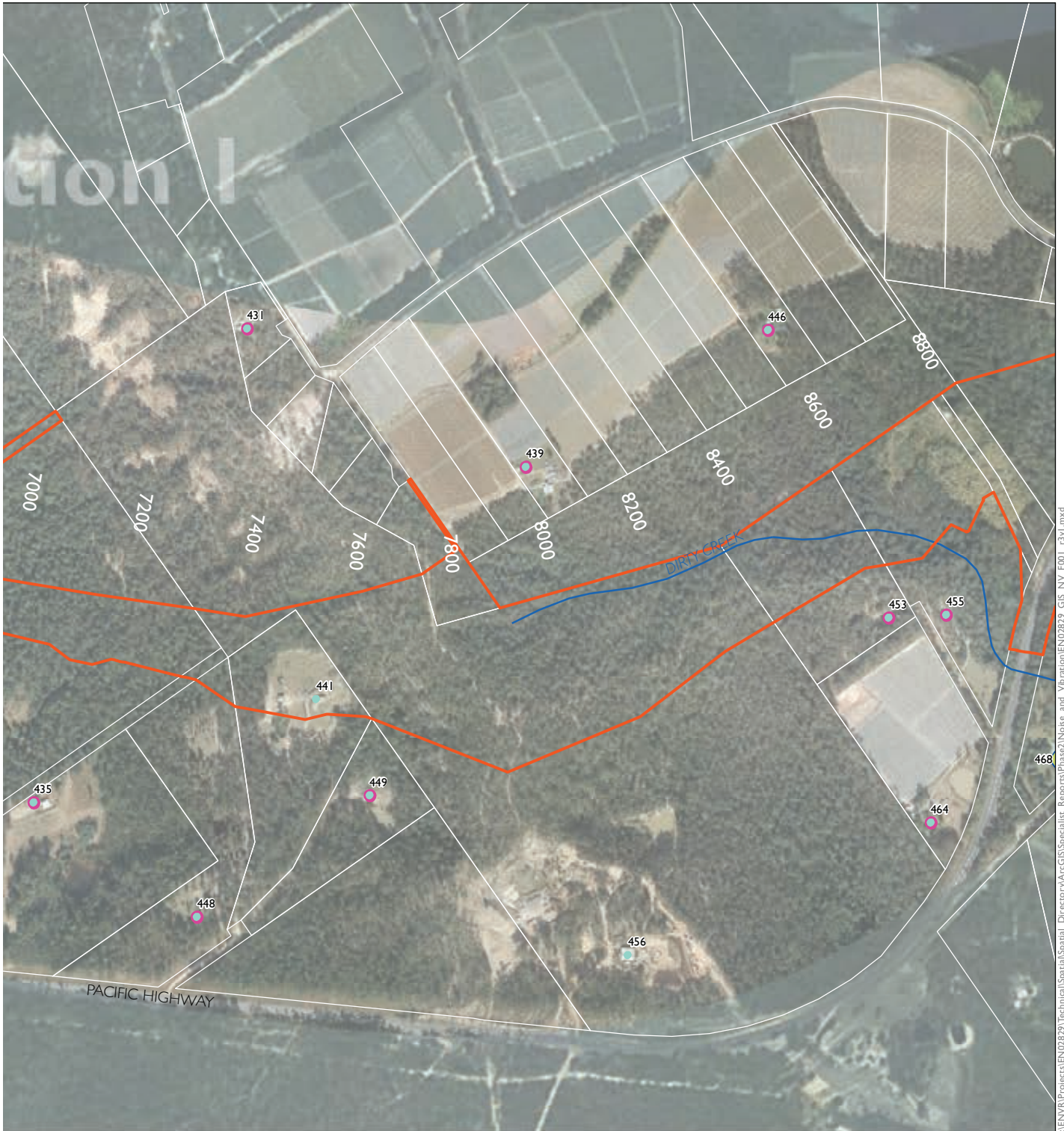


Appendix A.3 Proposed operational mitigation - design year



- The project
 - Upgrade completed to dual carriageway
 - Upgrade under construction
 - Potential low noise pavement (approximate) - subject to detailed design
- Receivers with proposed mitigation
 - Receiver location
 - Receiver location outside NCA
 - ◆ Logger location

Upgrading the Pacific Highway - Woolgoolga to Ballina Upgrade

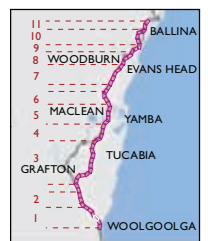


I:\ENVR\Projects\EN02829\Technical\Spatial\Directory\ArcGIS\Specialist_Reports\Phase2\Noise_and_Vibration\EN02829_GIS_NV_F001_r3v1.mxd



1:10,000

SHEET 3 of 52



Appendix A.4 Proposed operational mitigation - design year

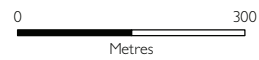


- The project
- Upgrade completed to dual carriageway
- Upgrade under construction
- Potential low noise pavement (approximate) - subject to detailed design
- Receivers with proposed mitigation
- Receiver location
- Receiver location outside NCA
- ⊙ Logger location

Upgrading the Pacific Highway - Woolgoolga to Ballina Upgrade

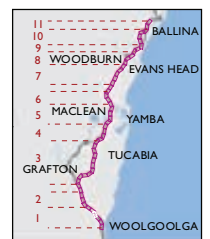


I:\ENVR\Projects\EN02829\Technical\Spatial\Spatial_Directory\ArcGIS\Specialist_Reports\Phase2\Noise_and_Vibration\EN02829_GIS_NV_F001_r3v1.mxd



1:10,000

SHEET 4 of 52



Appendix A.5 Proposed operational mitigation - design year



- The project
- Upgrade completed to dual carriageway
- Upgrade under construction
- Potential low noise pavement (approximate) - subject to detailed design
- Receivers with proposed mitigation
- Receiver location
- Receiver location outside NCA
- Logger location

Upgrading the Pacific Highway - Woolgoolga to Ballina Upgrade

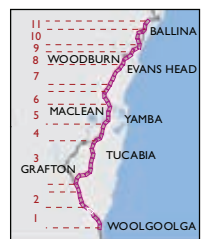


I:\ENVR\Projects\EN02829\Technical\Spatial\Directory\ArcGIS\Specialist_Reports\Phase2\Noise_and_Vibration\EN02829_GIS_NV_F001_r3v1.mxd



1:10,000

SHEET 5 of 52

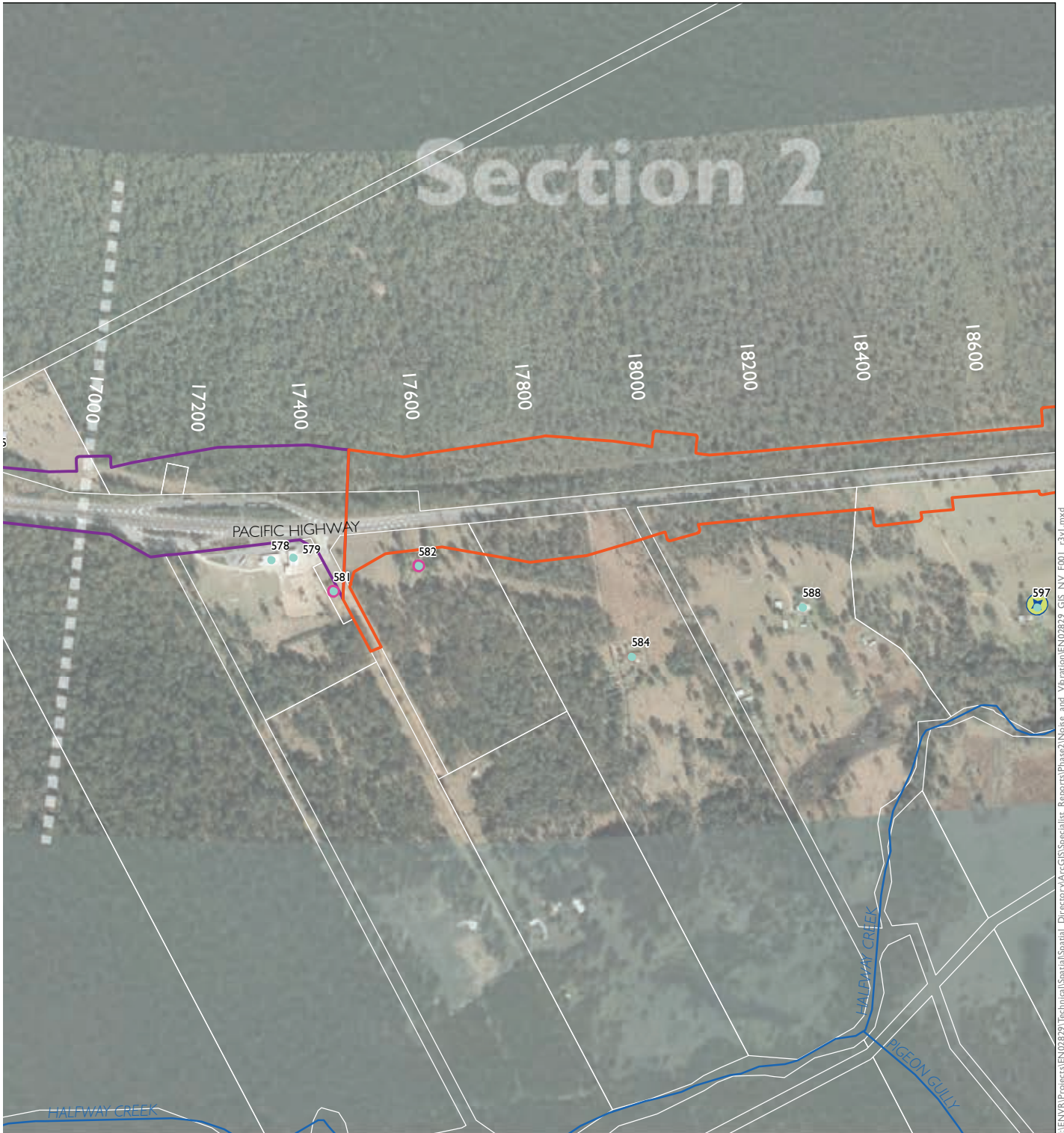


Appendix A.6 Proposed operational mitigation - design year



- The project
- Upgrade completed to dual carriageway
- Upgrade under construction
- Potential low noise pavement (approximate) - subject to detailed design
- Receivers with proposed mitigation
- Receiver location
- Receiver location outside NCA
- ⊕ Logger location

Upgrading the Pacific Highway - Woolgoolga to Ballina Upgrade

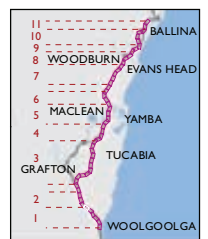


\\ENVR\Projects\EN02829\Technical\Spatial\Spatial_Directory\ArcGIS\Specialist_Reports\Phase2\Noise_and_Vibration\EN02829_GIS_NV_F001_r3v1.mxd



1:10,000

SHEET 6 of 52



Appendix A.7 Proposed operational mitigation - design year



- The project
- Upgrade completed to dual carriageway
- Upgrade under construction
- Potential low noise pavement (approximate) - subject to detailed design
- Receivers with proposed mitigation
- Receiver location
- Receiver location outside NCA
- Logger location

Upgrading the Pacific Highway - Woolgoolga to Ballina Upgrade

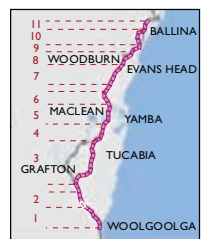


I:\ENVR\Projects\EN02829\Technical\Spatial\Directory\ArcGIS\Specialize_Report\Phase2\Noise_and_Vibration\EN02829_GIS_NV_F001_r3v1.mxd



1:10,000

SHEET 7 of 52

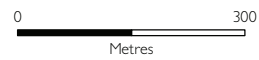


Appendix A.8 Proposed operational mitigation - design year



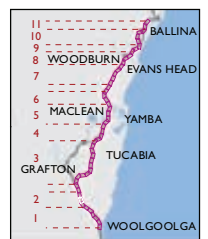
- The project
- Upgrade completed to dual carriageway
- Upgrade under construction
- Potential low noise pavement (approximate) - subject to detailed design
- Receivers with proposed mitigation
- Receiver location
- Receiver location outside NCA
- Logger location

Upgrading the Pacific Highway - Woolgoolga to Ballina Upgrade



1:10,000

SHEET 8 of 52



Appendix A.9 Proposed operational mitigation - design year



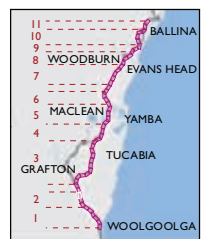
- The project
- Upgrade completed to dual carriageway
- Upgrade under construction
- Potential low noise pavement (approximate) - subject to detailed design
- Receiver location outside NCA
- Receiver location
- ⊕ Logger location

Upgrading the Pacific Highway - Woolgoolga to Ballina Upgrade



1:10,000

SHEET 9 of 52



Appendix A.10 Proposed operational mitigation - design year

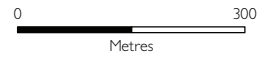


- The project
- Upgrade completed to dual carriageway
- Upgrade under construction
- Potential low noise pavement (approximate) - subject to detailed design
- Receiver location outside NCA
- Receiver location
- Logger location
- Receivers with proposed mitigation

Upgrading the Pacific Highway - Woolgoolga to Ballina Upgrade

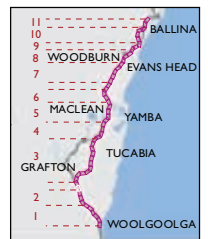


I:\ENVR\Projects\EN02829\Technical\Spatial\Spatial_Directory\ArcGIS\Specialist_Reports\Phase2\Noise_and_Vibration\EN02829_GIS_NV_F001_r3v1.mxd



1:10,000

SHEET 10 of 52



Appendix A.11 Proposed operational mitigation - design year



- ▬ The project
 - ▬ Upgrade completed to dual carriageway
 - ▬ Upgrade under construction
 - ▬ Potential low noise pavement (approximate) - subject to detailed design
- Receivers with proposed mitigation
 - Receiver location
 - Receiver location outside NCA
 - ⊕ Logger location

Upgrading the Pacific Highway - Woolgoolga to Ballina Upgrade

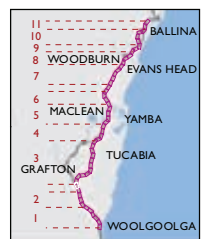


I:\ENVR\Projects\EN02829\Technical\Spatial\Spatial_Directory\ArcGIS\Specialist_Reports\Phase2\Noise_and_Vibration\EN02829_GIS_NV_F001_3\1.mxd



1:10,000

SHEET 11 of 52



Appendix A.12 Proposed operational mitigation - design year

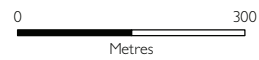


- The project
- Upgrade completed to dual carriageway
- Upgrade under construction
- Potential low noise pavement (approximate) - subject to detailed design
- Receiver location
- Receiver location outside NCA
- Logger location
- Receivers with proposed mitigation

Upgrading the Pacific Highway - Woolgoolga to Ballina Upgrade

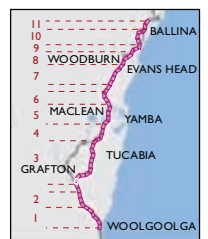


I:\ENVR\Projects\EN02829\Technical\Spatial\Directory\ArcGIS\Specialise_Report\Phase2\Noise_and_Vibration\EN02829_GIS_NV_F001_c3v1.mxd



1:10,000

SHEET 12 of 52



Appendix A.13 Proposed operational mitigation - design year



- The project
- Upgrade completed to dual carriageway
- Upgrade under construction
- Potential low noise pavement (approximate) - subject to detailed design
- Receivers with proposed mitigation
- Receiver location
- Receiver location outside NCA
- ⊕ Logger location

Upgrading the Pacific Highway - Woolgoolga to Ballina Upgrade

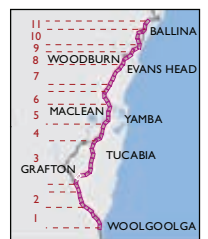


I:\ENVR\Project\EN02829\Technical\Spatial\Spatial_Directory\ArcGIS\Specialist_Reports\Phase2\Noise_and_Vibration\EN02829_GIS_NV_F001_r3v1.mxd



1:10,000

SHEET 13 of 52



Appendix A.14 Proposed operational mitigation - design year



- The project
- Upgrade completed to dual carriageway
- Upgrade under construction
- Potential low noise pavement (approximate) - subject to detailed design
- Receivers with proposed mitigation
- Receiver location
- Receiver location outside NCA
- Logger location

Upgrading the Pacific Highway - Woolgoolga to Ballina Upgrade

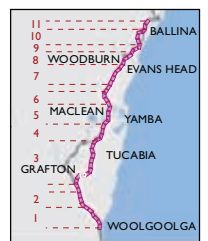


I:\ENVR\Projects\EN02829\Technical\Spatial\Directory\ArcGIS\Specialist_Reports\Phase2\Noise_and_Vibration\EN02829_GIS_NV_F001_r3v1.mxd

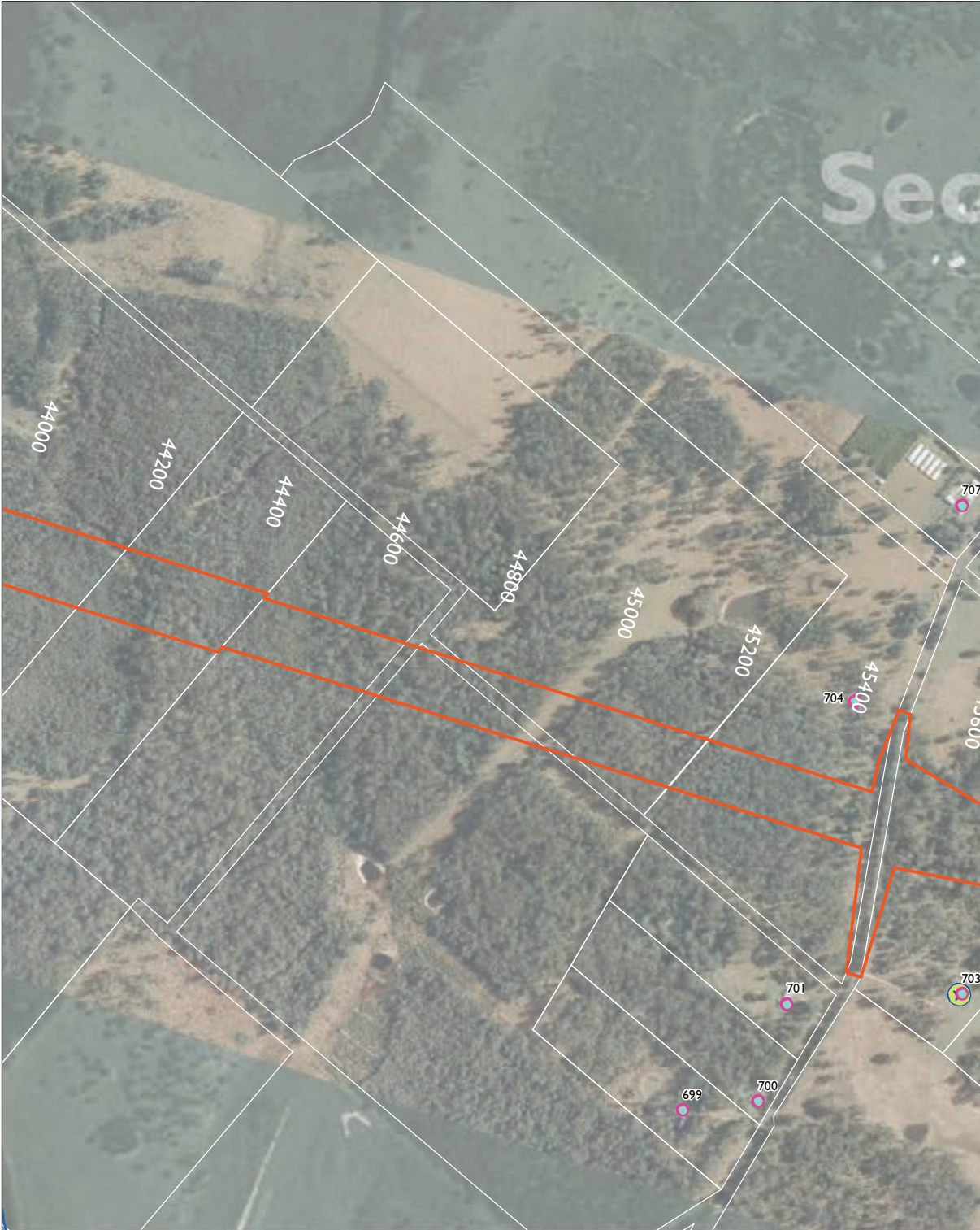










1:10,000

SHEET 14 of 52



Appendix A.15 Proposed operational mitigation - design year



-  The project
-  Upgrade completed to dual carriageway
-  Upgrade under construction
-  Potential low noise pavement (approximate) - subject to detailed design
-  Receivers with proposed mitigation
-  Receiver location
-  Receiver location outside NCA
-  Logger location

Upgrading the Pacific Highway - Woolgoolga to Ballina Upgrade

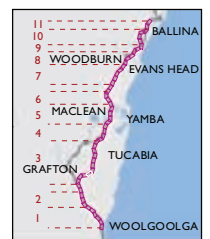


I:\ENVR\Projects\EN02829\Technical\Spatial\Directory\ArcGIS\Specialist_Reports\Phase2\Noise_and_Vibration\EN02829_GIS_NV_F001_r3v1.mxd



1:10,000

SHEET 15 of 52

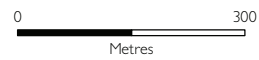
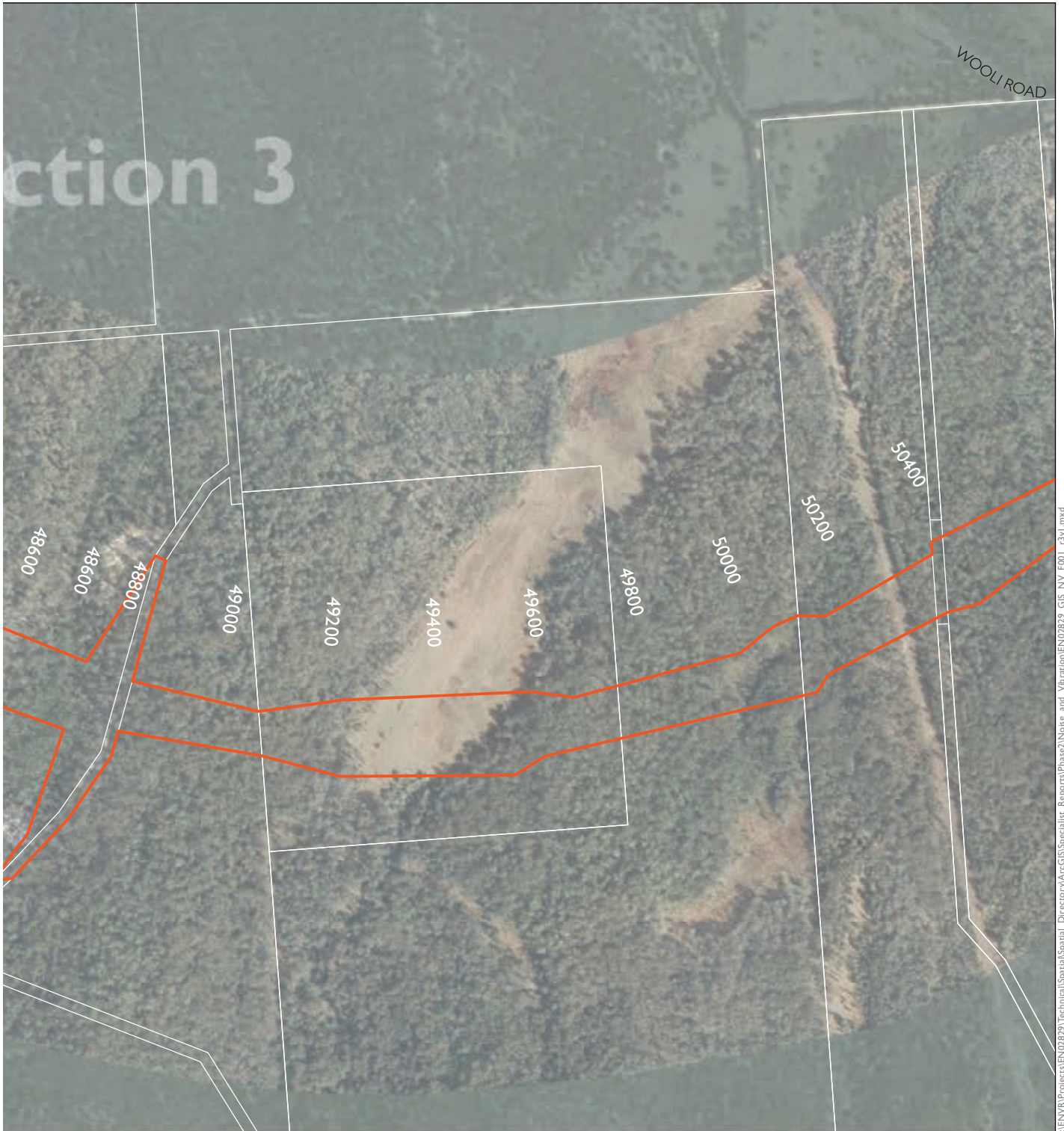


Appendix A.16 Proposed operational mitigation - design year



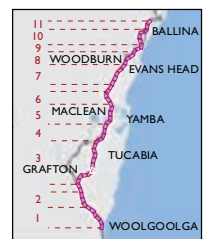
- The project
- Upgrade completed to dual carriageway
- Upgrade under construction
- Potential low noise pavement (approximate) - subject to detailed design
- Receivers with proposed mitigation
- Receiver location
- Receiver location outside NCA
- Logger location

Upgrading the Pacific Highway - Woolgoolga to Ballina Upgrade



1:10,000

SHEET 16 of 52



Appendix A.17 Proposed operational mitigation - design year



- The project
- Upgrade completed to dual carriageway
- Upgrade under construction
- Potential low noise pavement (approximate) - subject to detailed design
- Receivers with proposed mitigation
- Receiver location
- Receiver location outside NCA
- Logger location

Upgrading the Pacific Highway - Woolgoolga to Ballina Upgrade

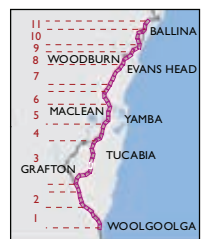


I:\ENVR\Projects\EN02829\Technical\Spatial\Directory\ArcGIS\Specialist_Reports\Phase2\Noise_and_Vibration\EN02829_GIS_NV_F001_r3v1.mxd



1:10,000

SHEET 17 of 52



Appendix A.18 Proposed operational mitigation - design year



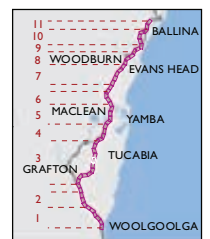
- The project
- Upgrade completed to dual carriageway
- Upgrade under construction
- Potential low noise pavement (approximate) - subject to detailed design
- Receivers with proposed mitigation
- Receiver location
- Receiver location outside NCA
- Logger location

Upgrading the Pacific Highway - Woolgoolga to Ballina Upgrade











1:10,000

SHEET 18 of 52



Appendix A.19 Proposed operational mitigation - design year



-  The project
-  Upgrade completed to dual carriageway
-  Upgrade under construction
-  Potential low noise pavement (approximate) - subject to detailed design
-  Receivers with proposed mitigation
-  Receiver location
-  Receiver location outside NCA
-  Logger location

Upgrading the Pacific Highway - Woolgoolga to Ballina Upgrade

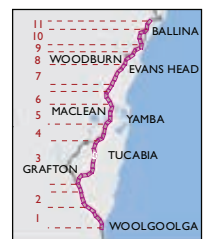


I:\ENVR\Projects\EN402829\Technical\Spatial\Directory\ArcGIS\Specialist_Reports\Phase2\Noise_and_Vibration\EN402829_GIS_NV_F001_r3v1.mxd



1:10,000

SHEET 19 of 52



Appendix A.20 Proposed operational mitigation - design year



- The project
 - Upgrade completed to dual carriageway
 - Upgrade under construction
 - Potential low noise pavement (approximate) - subject to detailed design
- Receivers with proposed mitigation
 - Receiver location
 - Receiver location outside NCA
 - ⊕ Logger location

Upgrading the Pacific Highway - Woolgoolga to Ballina Upgrade

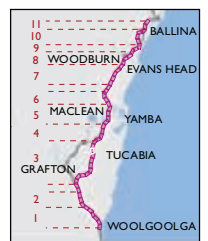


I:\ENVR\Projects\EN02829\Technical\Spatial\Spatial_Directory\ArcGIS\Specialist_Reports\Phase2\Noise_and_Vibration\EN02829_GIS_NV_F001_r3v1.mxd



1:10,000

SHEET 20 of 52



Appendix A.21 Proposed operational mitigation - design year



- The project
- Upgrade completed to dual carriageway
- Upgrade under construction
- Potential low noise pavement (approximate) - subject to detailed design
- Receivers with proposed mitigation
- Receiver location
- Receiver location outside NCA
- ⬇ Logger location

Upgrading the Pacific Highway - Woolgoolga to Ballina Upgrade

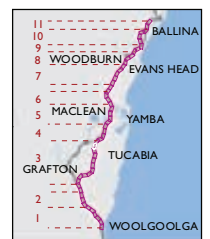


I:\ENVR\Projects\EN102829\Technical\Spatial\Directory\ArcGIS\Specialist_Reports\Phase2\Noise_and_Vibration\EN102829_GIS_NV_F001_r3v1.mxd



1:10,000

SHEET 21 of 52



Appendix A.22 Proposed operational mitigation - design year



- The project
- Upgrade completed to dual carriageway
- Upgrade under construction
- Potential low noise pavement (approximate) - subject to detailed design
- Receivers with proposed mitigation
- Receiver location
- Receiver location outside NCA
- ⊕ Logger location

Upgrading the Pacific Highway - Woolgoolga to Ballina Upgrade

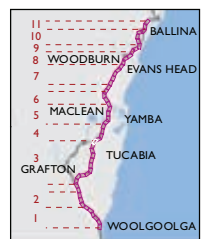


I:\ENVR\Projects\EN02829\Technical\Spatial_Spatial_Directory\ArcGIS\Specialist_Reports\Phase2\Noise_and_Vibration\EN02829_GIS_NV_F001_r3v1.mxd



1:10,000

SHEET 22 of 52



Appendix A.23 Proposed operational mitigation - design year



- The project
- Upgrade completed to dual carriageway
- Upgrade under construction
- Potential low noise pavement (approximate) - subject to detailed design
- Receivers with proposed mitigation
- Receiver location
- Receiver location outside NCA
- ⊕ Logger location

Upgrading the Pacific Highway - Woolgoolga to Ballina Upgrade

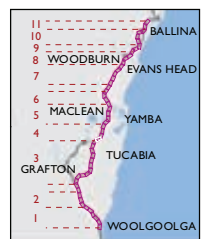


I:\ENVR\Projects\EN02829\Technical\Spatial\Directory\ArcGIS\Specialist_Reports\Phase2\Noise_and_Vibration\EN02829_GIS_NV_F001_r3v1.mxd



1:10,000

SHEET 23 of 52



Appendix A.24 Proposed operational mitigation - design year



- The project
- Upgrade completed to dual carriageway
- Upgrade under construction
- Potential low noise pavement (approximate) - subject to detailed design
- Receivers with proposed mitigation
- Receiver location
- Receiver location outside NCA
- ➔
 Logger location

Upgrading the Pacific Highway - Woolgoolga to Ballina Upgrade

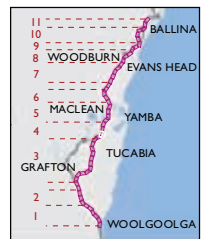


I:\ENVR\Projects\EN02829\Technical\Spatial\Directory\ArcGIS\Specialist_Reports\Phase2\Noise_and_Vibration\EN02829_GIS_NV_F001_r3v1.mxd



1:10,000

SHEET 24 of 52



Appendix A.25 Proposed operational mitigation - design year

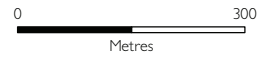


- The project
- Upgrade completed to dual carriageway
- Upgrade under construction
- Potential low noise pavement (approximate) - subject to detailed design
- Receivers with proposed mitigation
- Receiver location
- Receiver location outside NCA
- Logger location

Upgrading the Pacific Highway - Woolgoolga to Ballina Upgrade

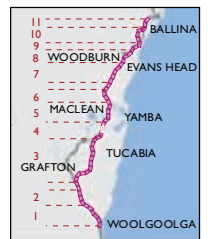


I:\ENVR\Projects\EN402829\Technical\Spatial\Directory\ArcGIS\Specialist_Reports\Phase2\Noise_and_Vibration\EN402829_GIS_NV_F001_r3v1.mxd



1:10,000

SHEET 25 of 52



Appendix A.26 Proposed operational mitigation - design year



- The project
- Upgrade completed to dual carriageway
- Upgrade under construction
- Potential low noise pavement (approximate) - subject to detailed design
- Receivers with proposed mitigation
- Receiver location
- Receiver location outside NCA
- ⊕ Logger location

Upgrading the Pacific Highway - Woolgoolga to Ballina Upgrade

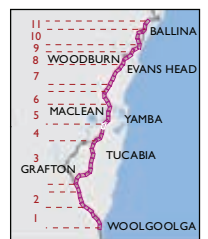


I:\ENVR\Projects\EN02829\Technical\Spatial\Map\Report\Phase2\Noise_and_Vibration\EN02829_GIS_NV_F001_r3v1.mxd



1:10,000

SHEET 26 of 52



Appendix A.27 Proposed operational mitigation - design year



- The project
- Upgrade completed to dual carriageway
- Upgrade under construction
- Potential low noise pavement (approximate) - subject to detailed design
- Receivers with proposed mitigation
- Receiver location
- Receiver location outside NCA
- Logger location

Upgrading the Pacific Highway - Woolgoolga to Ballina Upgrade

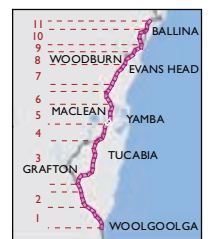


I:\ENVR\Projects\EN02829\Technical\Spatial\Directory\ArcGIS\Specialist_Reports\Phase2\Noise_and_Vibration\EN02829_GIS_NV_F001_r3v1.mxd



1:10,000

SHEET 27 of 52



Appendix A.28 Proposed operational mitigation - design year



- The project
- Upgrade completed to dual carriageway
- Upgrade under construction
- Potential low noise pavement (approximate) - subject to detailed design
- Receivers with proposed mitigation
- Receiver location
- Receiver location outside NCA
- ⊕ Logger location

Upgrading the Pacific Highway - Woolgoolga to Ballina Upgrade

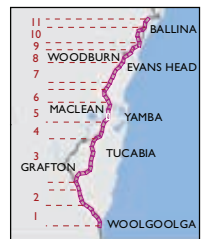


I:\ENV\RI\Projects\EN02829\Technical\Spatial\Spatial_Directory\ArcGIS\Specialist_Reports\Phase2\Noise_and_Vibration\EN02829_GIS_NV_F001_r3v1.mxd



1:10,000

SHEET 28 of 52



Appendix A.29 Proposed operational mitigation - design year



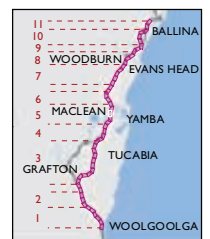
- The project
- Upgrade completed to dual carriageway
- Upgrade under construction
- Potential low noise pavement (approximate) - subject to detailed design
- Receivers with proposed mitigation
- Receiver location
- Receiver location outside NCA
- ⊕ Logger location

Upgrading the Pacific Highway - Woolgoolga to Ballina Upgrade

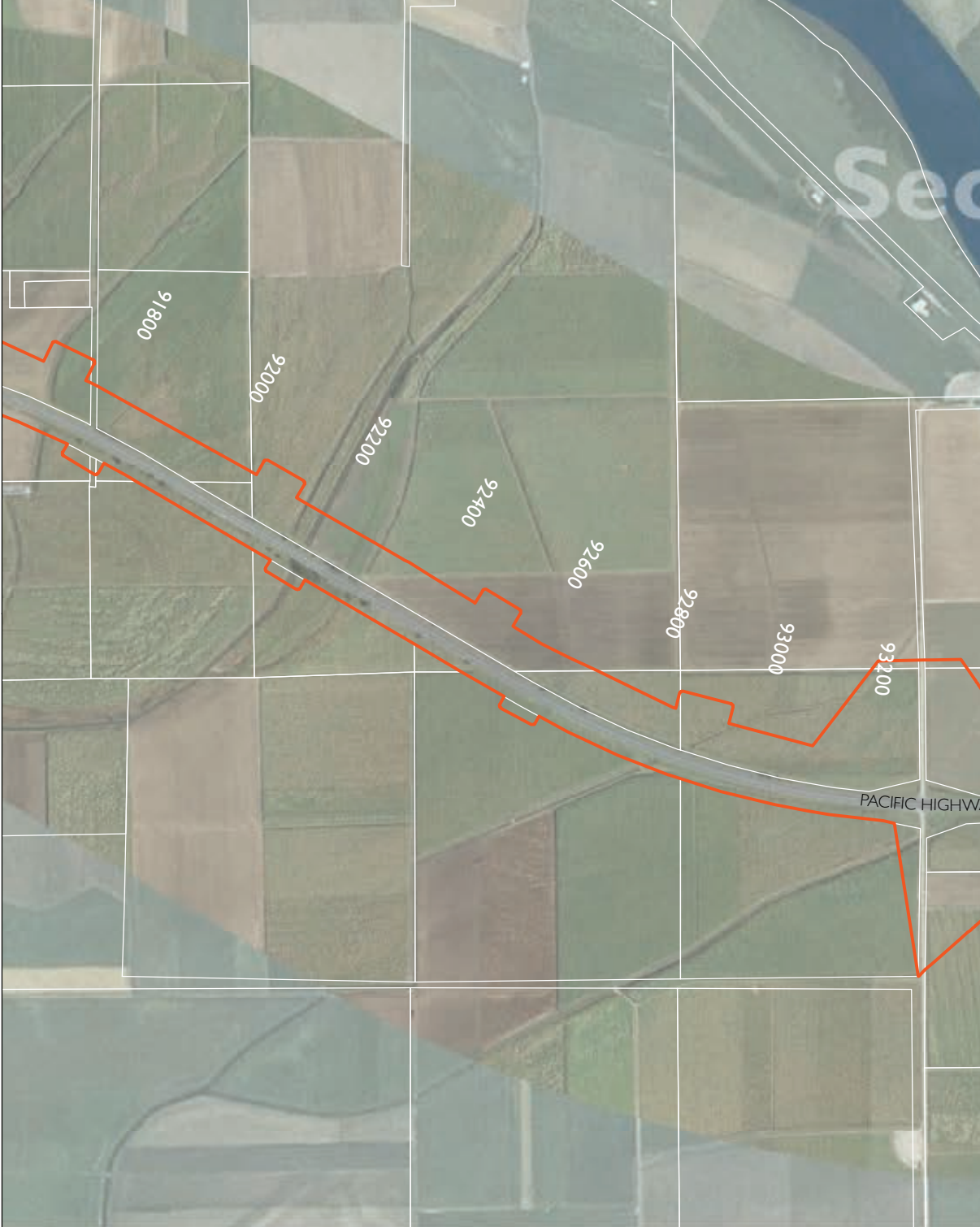










1:10,000

SHEET 29 of 52



Appendix A.30 Proposed operational mitigation - design year



-  The project
-  Upgrade completed to dual carriageway
-  Upgrade under construction
-  Potential low noise pavement (approximate) - subject to detailed design
-  Receivers with proposed mitigation
-  Receiver location
-  Receiver location outside NCA
-  Logger location

Upgrading the Pacific Highway - Woolgoolga to Ballina Upgrade

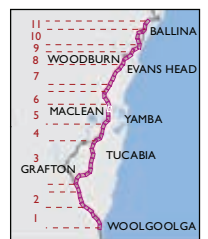


I:\ENVR\Projects\EN02829\Technical\Spatial_Spatial_Directory\ArcGIS\Specialist_Reports\Phase2\Noise_and_Vibration\EN02829_GIS_NV_F001_r3v1.mxd



1:10,000

SHEET 30 of 52



Appendix A.31 Proposed operational mitigation - design year



- The project
- Upgrade completed to dual carriageway
- Upgrade under construction
- Potential low noise pavement (approximate) - subject to detailed design
- Receivers with proposed mitigation
- Receiver location
- Receiver location outside NCA
- L
 Logger location

Upgrading the Pacific Highway - Woolgoolga to Ballina Upgrade

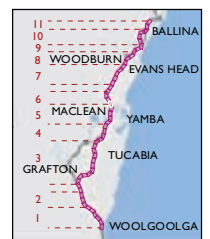


I:\ENVR\Projects\EN02829\Technical\Spatial\Directory\ArcGIS\Specialist_Reports\Phase2\Noise_and_Vibration\EN02829_GIS_NV_F001_r3v1.mxd



1:10,000

SHEET 31 of 52

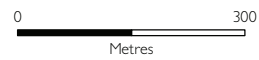


Appendix A.32 Proposed operational mitigation - design year



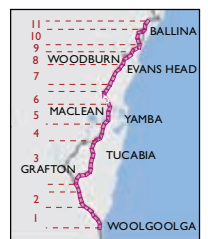
- The project
- Upgrade completed to dual carriageway
- Upgrade under construction
- Potential low noise pavement (approximate) - subject to detailed design
- Receivers with proposed mitigation
- Receiver location
- Receiver location outside NCA
- Logger location

Upgrading the Pacific Highway - Woolgoolga to Ballina Upgrade



1:10,000

SHEET 32 of 52



Appendix A.33 Proposed operational mitigation - design year



- The project
- Upgrade completed to dual carriageway
- Upgrade under construction
- Potential low noise pavement (approximate) - subject to detailed design
- Receivers with proposed mitigation
- Receiver location
- Receiver location outside NCA
- ⊕ Logger location

Upgrading the Pacific Highway - Woolgoolga to Ballina Upgrade

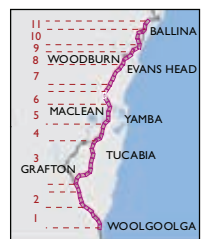


I:\ENVR\Projects\EN02829\Technical\Spatial\Directory\ArcGIS\Specialist_Reports\Phase2\Noise_and_Vibration\EN02829_GIS_NV_F001_r3v1.mxd



1:10,000

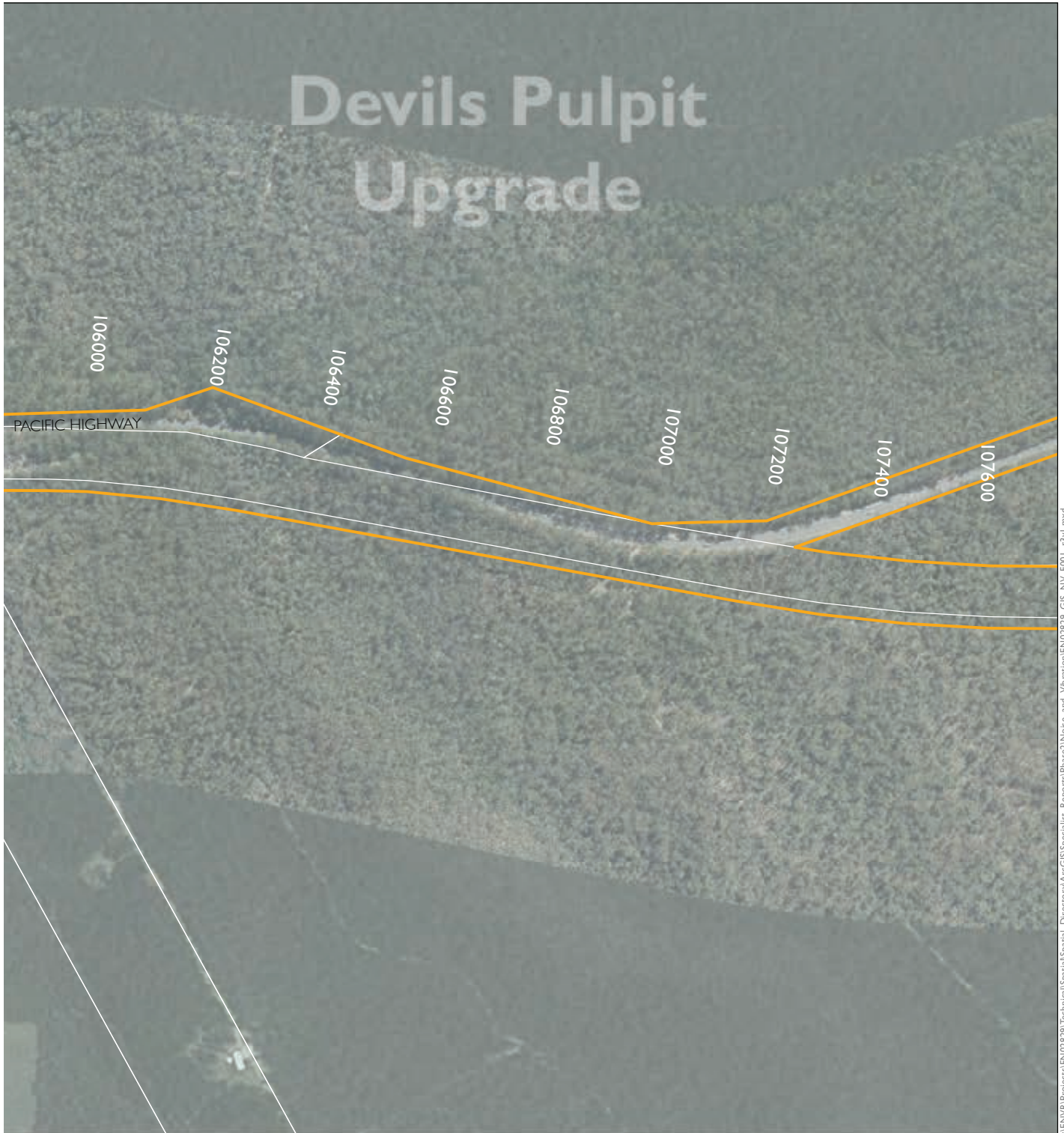
SHEET 33 of 52



Appendix A.34 Proposed operational mitigation - design year



- The project
- Upgrade completed to dual carriageway
- Upgrade under construction
- Potential low noise pavement (approximate) - subject to detailed design
- Receivers with proposed mitigation
- Receiver location
- Receiver location outside NCA
- Logger location

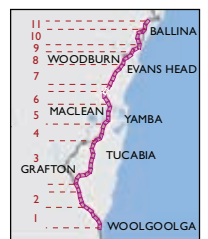


I:\ENVR\Projects\EN02829\Technical\Spatial\Directory\ArcGIS\Specialist_Reports\Phase2\Noise_and_Vibration\EN02829_GIS_NV_F001_r3v1.mxd











1:10,000

SHEET 34 of 52

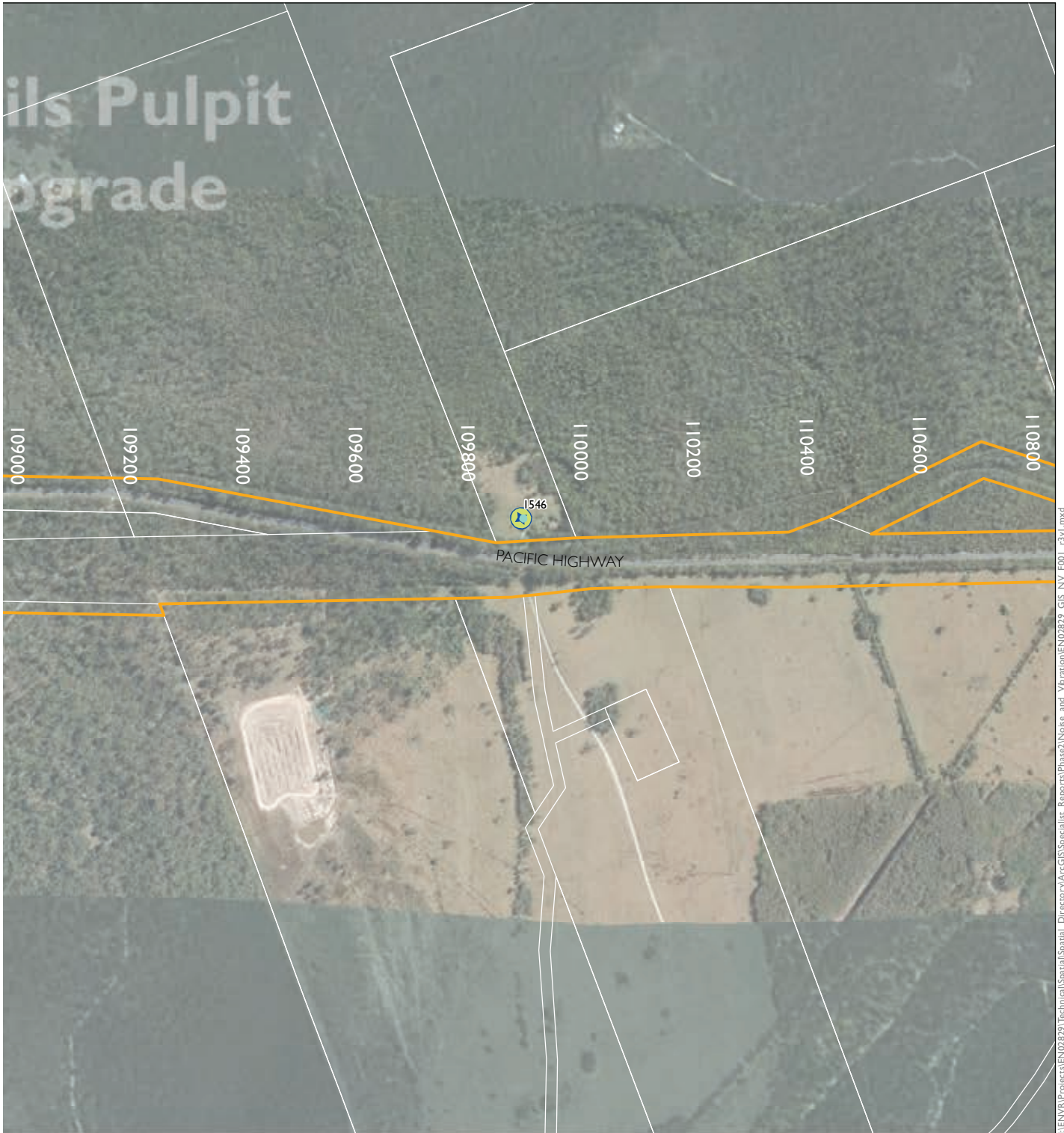


Appendix A.35 Proposed operational mitigation - design year



-  The project
-  Upgrade completed to dual carriageway
-  Upgrade under construction
-  Potential low noise pavement (approximate) - subject to detailed design
-  Receivers with proposed mitigation
-  Receiver location
-  Receiver location outside NCA
-  Logger location

Upgrading the Pacific Highway - Woolgoolga to Ballina Upgrade

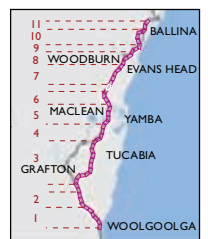


I:\ENVR\Projects\EN02829\Technical\Spatial\Directory\ArcGIS\Specialist_Reports\Phase2\Noise_and_Vibration\EN02829_GIS_NV_F001_r3\VI.mxd



1:10,000

SHEET 35 of 52

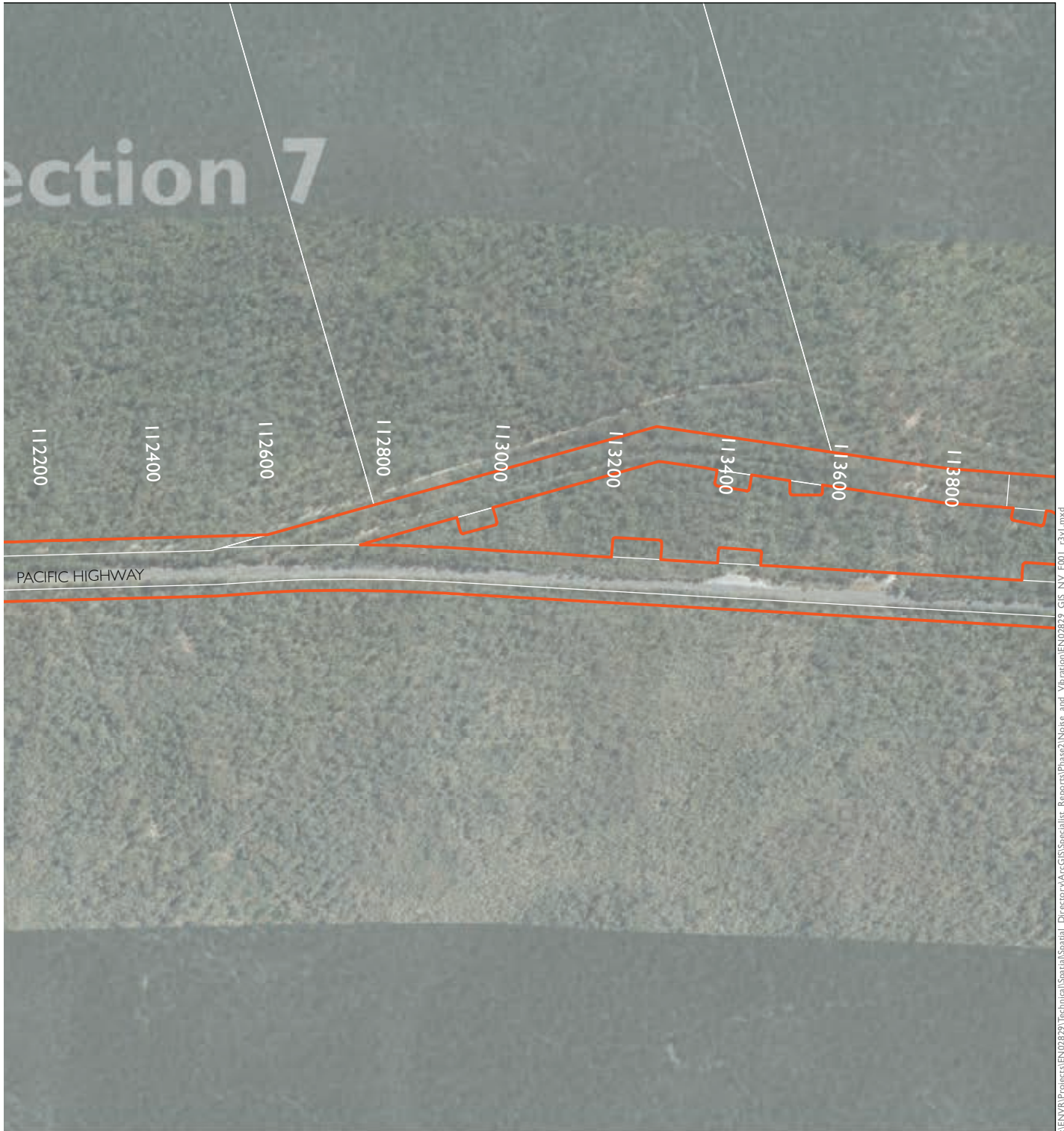


Appendix A.36 Proposed operational mitigation - design year

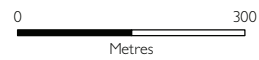


- The project
 - Upgrade completed to dual carriageway
 - Upgrade under construction
 - Potential low noise pavement (approximate) - subject to detailed design
- Receivers with proposed mitigation
 - Receiver location
 - Receiver location outside NCA
 - ⊕ Logger location

Upgrading the Pacific Highway - Woolgoolga to Ballina Upgrade

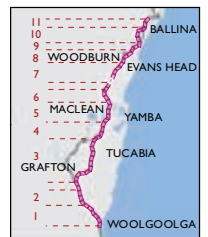


I:\ENVR\Projects\EN102829\Technical\Spatial\Directory\ArcGIS\Specialist_Reports\Phase2\Noise_and_Vibration\EN102829_GIS_NV_F001_r3v1.mxd



1:10,000

SHEET 36 of 52

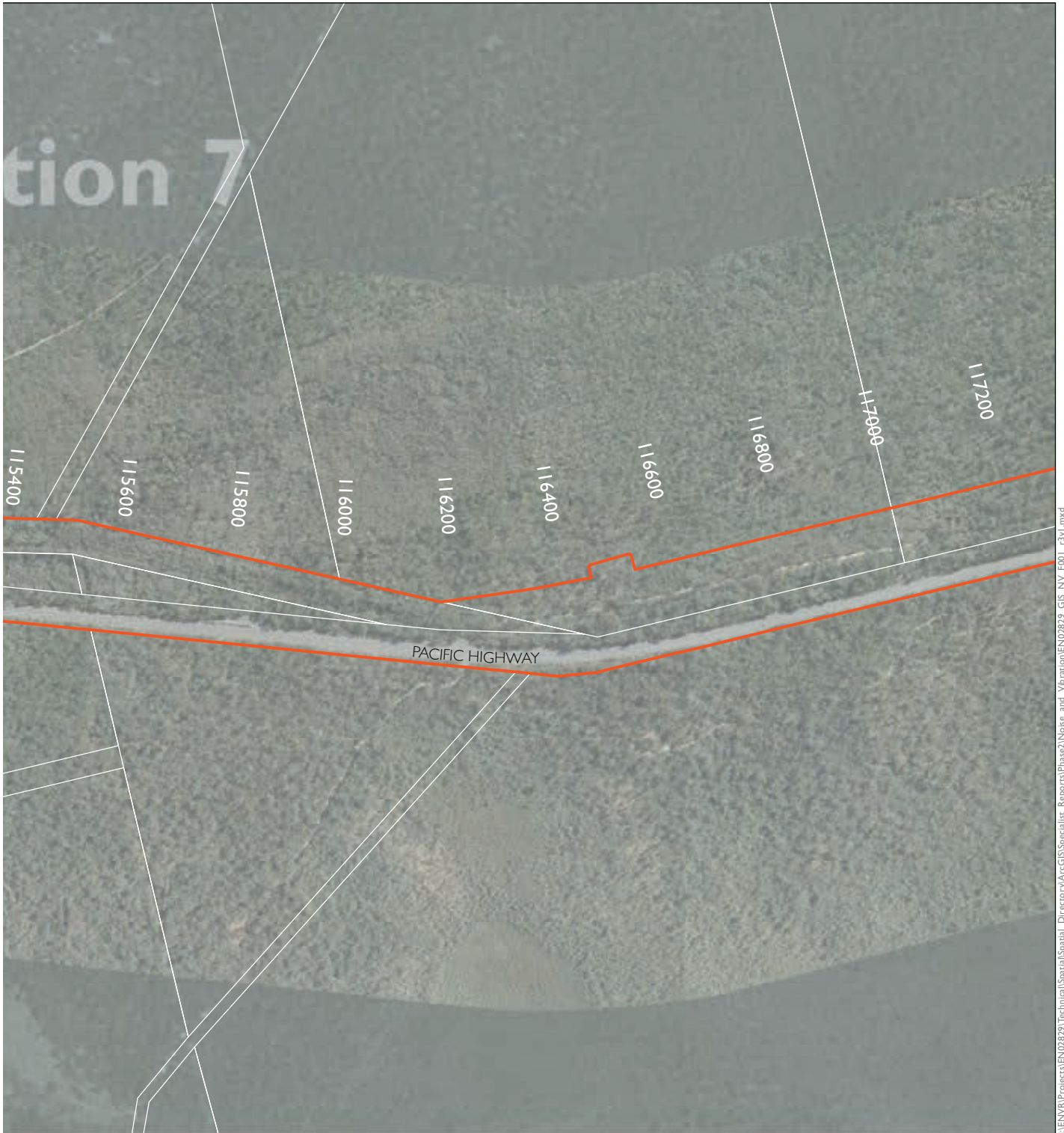


Appendix A.37 Proposed operational mitigation - design year



- The project
- Upgrade completed to dual carriageway
- Upgrade under construction
- Potential low noise pavement (approximate) - subject to detailed design
- Receivers with proposed mitigation
- Receiver location
- Receiver location outside NCA
- +
 Logger location

Upgrading the Pacific Highway - Woolgoolga to Ballina Upgrade

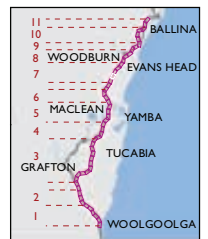


I:\ENVR\Projects\EN02829\Technical\Spatial\Directory\ArcGIS\Specialist_Reports\Phase2\Noise_and_Vibration\EN02829_GIS_NV_F001_r3v1.mxd



1:10,000

SHEET 37 of 52



Appendix A.38 Proposed operational mitigation - design year

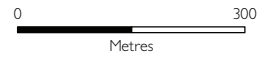


- The project
- Upgrade completed to dual carriageway
- Upgrade under construction
- Potential low noise pavement (approximate) - subject to detailed design
- Receivers with proposed mitigation
- Receiver location
- Receiver location outside NCA
- Logger location

Upgrading the Pacific Highway - Woolgoolga to Ballina Upgrade

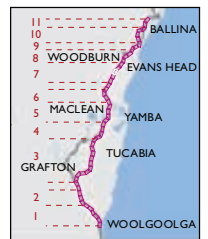


I:\ENVR\Projects\EN402829\Technical\Spatial\Directory\ArcGIS\Specialist_Reports\Phase2\Noise_and_Vibration\EN402829_GIS_NV_F001_r3v1.mxd



1:10,000

SHEET 38 of 52



Appendix A.39 Proposed operational mitigation - design year



- The project
- Upgrade completed to dual carriageway
- Upgrade under construction
- Potential low noise pavement (approximate) - subject to detailed design
- Receivers with proposed mitigation
- Receiver location
- Receiver location outside NCA
- Logger location

Upgrading the Pacific Highway - Woolgoolga to Ballina Upgrade

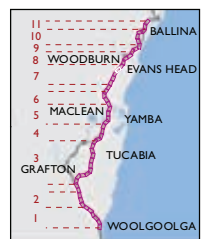


I:\ENVR\Projects\EN02829\Technical\Spatial\Spatial_Directory\ArcGIS\Specialist_Reports\Phase2\Noise_and_Vibration\EN02829_GIS_NV_F001_331.mxd



1:10,000

SHEET 39 of 52



Appendix A.40 Proposed operational mitigation - design year

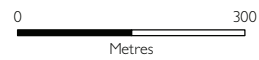


- The project
- Upgrade completed to dual carriageway
- Upgrade under construction
- Potential low noise pavement (approximate) - subject to detailed design
- Receivers with proposed mitigation
- Receiver location
- Receiver location outside NCA
- Logger location

Upgrading the Pacific Highway - Woolgoolga to Ballina Upgrade

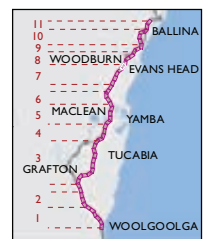


I:\ENVR\Projects\EN102829\Technical\Spatial\Spatial_Directory\ArcGIS\Specialist_Reports\Phase2\Noise_and_Vibration\EN102829_GIS_NV_F001_r3v1.mxd



1:10,000

SHEET 40 of 52



Appendix A.41 Proposed operational mitigation - design year



- The project
- Upgrade completed to dual carriageway
- Upgrade under construction
- Potential low noise pavement (approximate) - subject to detailed design
- Receivers with proposed mitigation
- Receiver location
- Receiver location outside NCA
- +
 Logger location

Upgrading the Pacific Highway - Woolgoolga to Ballina Upgrade

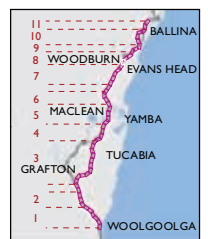


I:\ENVR\Projects\EN02829\Technical\Spatial\Directory\ArcGIS\Specialist_Reports\Phase2\Noise_and_Vibration\EN02829_GIS_NV_F001_r3v1.mxd



1:10,000

SHEET 41 of 52



Appendix A.42 Proposed operational mitigation - design year



- The project
- Upgrade completed to dual carriageway
- Upgrade under construction
- Potential low noise pavement (approximate) - subject to detailed design
- Receivers with proposed mitigation
- Receiver location
- Receiver location outside NCA
- + Logger location

Upgrading the Pacific Highway - Woolgoolga to Ballina Upgrade

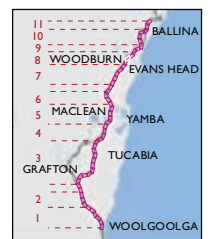


I:\ENVR\Projects\EN02829\Technical\Spatial\Spatial_Directory\ArcGIS\Specialist_Reports\Phase2\Noise_and_Vibration\EN02829_GIS_NV_F001_r3v1.mxd



1:10,000

SHEET 42 of 52



Appendix A.43 Proposed operational mitigation - design year



- The project
- Upgrade completed to dual carriageway
- Upgrade under construction
- Potential low noise pavement (approximate) - subject to detailed design
- Receivers with proposed mitigation
- Receiver location
- Receiver location outside NCA
- Logger location

Upgrading the Pacific Highway - Woolgoolga to Ballina Upgrade

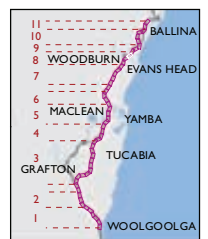


I:\ENVR\Projects\EN02829\Technical\Spatial\Directory\ArcGIS\Specialist_Reports\Phase2\Noise_and_Vibration\EN02829_GIS_NV_F001_r3v1.mxd



1:10,000

SHEET 43 of 52



Appendix A.44 Proposed operational mitigation - design year

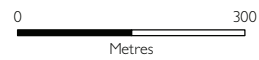


- The project
- Upgrade completed to dual carriageway
- Upgrade under construction
- Potential low noise pavement (approximate) - subject to detailed design
- Receivers with proposed mitigation
- Receiver location
- Receiver location outside NCA
- ⊕ Logger location

Upgrading the Pacific Highway - Woolgoolga to Ballina Upgrade

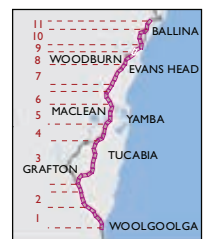


I:\ENVR\Projects\EN102829\Technical\Spatial\Directory\ArcGIS\Specialist_Reports\Phase2\Noise_and_Vibration\EN102829_GIS_NV_F001_c3v1.mxd



1:10,000

SHEET 44 of 52



Appendix A.45 Proposed operational mitigation - design year



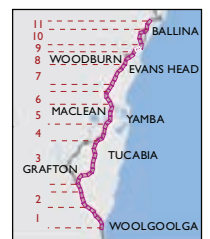
- The project
 - Upgrade completed to dual carriageway
 - Upgrade under construction
 - Potential low noise pavement (approximate) - subject to detailed design
- Receivers with proposed mitigation
 - Receiver location
 - Receiver location outside NCA
 - ⊕ Logger location

Upgrading the Pacific Highway - Woolgoolga to Ballina Upgrade



1:10,000

SHEET 45 of 52



Appendix A.46 Proposed operational mitigation - design year



- The project
- Upgrade completed to dual carriageway
- Upgrade under construction
- Potential low noise pavement (approximate) - subject to detailed design
- Receivers with proposed mitigation
- Receiver location
- Receiver location outside NCA
- ⊕ Logger location

Upgrading the Pacific Highway - Woolgoolga to Ballina Upgrade

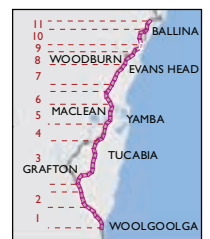


I:\ENVR\Projects\EN02829\Technical\Spatial\Directory\ArcGIS\Specialist_Reports\Phase2\Noise_and_Vibration\EN02829_GIS_NV_F001_r3v1.mxd



1:10,000

SHEET 46 of 52



Appendix A.47 Proposed operational mitigation - design year



- The project
- Upgrade completed to dual carriageway
- Upgrade under construction
- Potential low noise pavement (approximate) - subject to detailed design
- Receiver location
- Receiver location outside NCA
- ⊕ Logger location

Upgrading the Pacific Highway - Woolgoolga to Ballina Upgrade

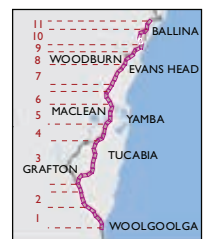


I:\ENVR\Projects\EN02829\Technical\Spatial\Spatial_Directory\ArcGIS\Specialist_Reports\Phase2\Noise_and_Vibration\EN02829_GIS_NV_F001_r3v1.mxd











1:10,000

SHEET 47 of 52



Appendix A.48 Proposed operational mitigation - design year



-  The project
-  Upgrade completed to dual carriageway
-  Upgrade under construction
-  Potential low noise pavement (approximate) - subject to detailed design
-  Receivers with proposed mitigation
-  Receiver location
-  Receiver location outside NCA
-  Logger location

Upgrading the Pacific Highway - Woolgoolga to Ballina Upgrade

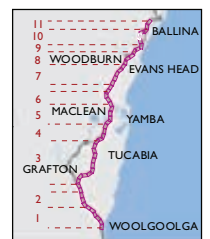


I:\ENVR\Projects\EN02829\Technical\Spatial\Directory\ArcGIS\Specialist_Reports\Phase2\Noise_and_Vibration\EN02829_GIS_NV_F001_r3v1.mxd











1:10,000

SHEET 48 of 52



Appendix A.49 Proposed operational mitigation - design year



-  The project
-  Upgrade completed to dual carriageway
-  Upgrade under construction
-  Potential low noise pavement (approximate) - subject to detailed design
-  Receivers with proposed mitigation
-  Receiver location
-  Receiver location outside NCA
-  Logger location

Upgrading the Pacific Highway - Woolgoolga to Ballina Upgrade

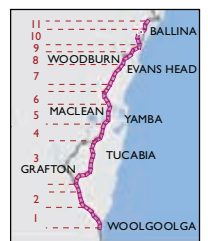


I:\ENVR\Projects\EN02829\Technical\Spatial\Directory\ArcGIS\Special\Report\Phase2\Noise_and_Vibration\EN02829_GIS_NV_F001_r3\1.mxd



1:10,000

SHEET 49 of 52



Appendix A.50 Proposed operational mitigation - design year



- The project
- Upgrade completed to dual carriageway
- Upgrade under construction
- Potential low noise pavement (approximate) - subject to detailed design
- Receiver location
- Receiver location outside NCA
- Receivers with proposed mitigation
- + Logger location

Upgrading the Pacific Highway - Woolgoolga to Ballina Upgrade

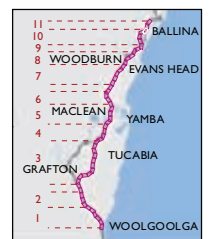


I:\ENVR\Projects\EN02829\Technical\Spatial\Spatial_Directory\ArcGIS\Specialist_Reports\Phase2\Noise_and_Vibration\EN02829_GIS_NV_F001_r3v1.mxd



1:10,000

SHEET 50 of 52



Appendix A.51 Proposed operational mitigation - design year



- The project
- Upgrade completed to dual carriageway
- Upgrade under construction
- Potential low noise pavement (approximate) - subject to detailed design
- Receivers with proposed mitigation
- Receiver location
- Receiver location outside NCA
- ⊕ Logger location

Upgrading the Pacific Highway - Woolgoolga to Ballina Upgrade

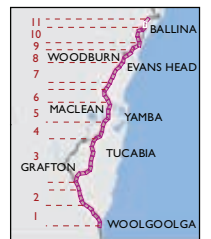


I:\ENVR\Projects\EN02829\Technical\Spatial\Directory\ArcGIS\Specialist_Reports\Phase2\Noise_and_Vibration\EN02829_GIS_NV_F001_r3v1.mxd



1:10,000

SHEET 51 of 52

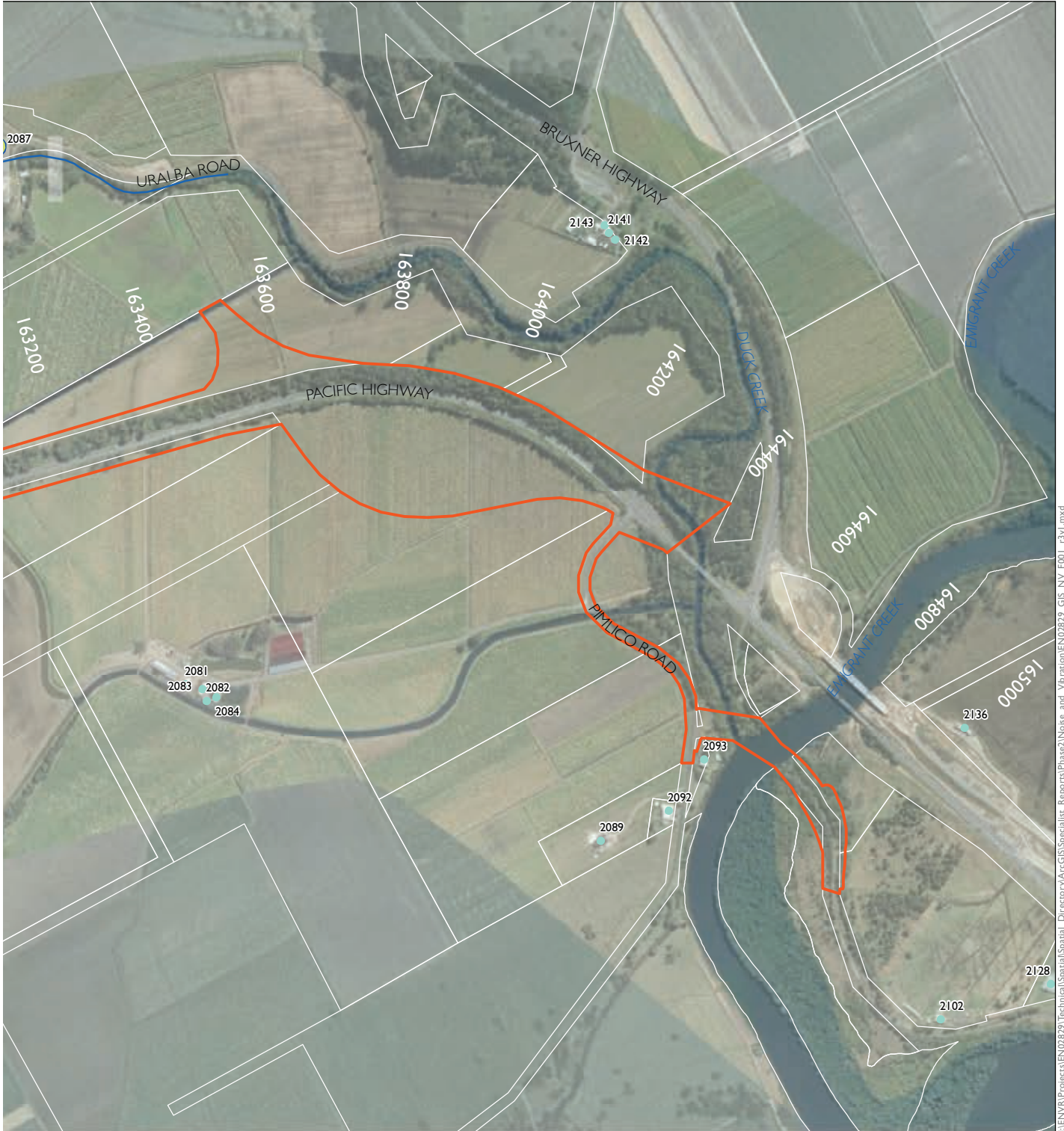


Appendix A.52 Proposed operational mitigation - design year



- The project
- Upgrade completed to dual carriageway
- Upgrade under construction
- Potential low noise pavement (approximate) - subject to detailed design
- Receiver location outside NCA
- Receiver location
- Logger location

Upgrading the Pacific Highway - Woolgoolga to Ballina Upgrade



I:\ENVR\Projects\EN02829\Technical\Spatial\Directory\ArcGIS\Specialist_Reports\Phase2\Noise_and_Vibration\EN02829_GIS_NV_F001_r3v1.mxd



1:10,000

SHEET 52 of 52

