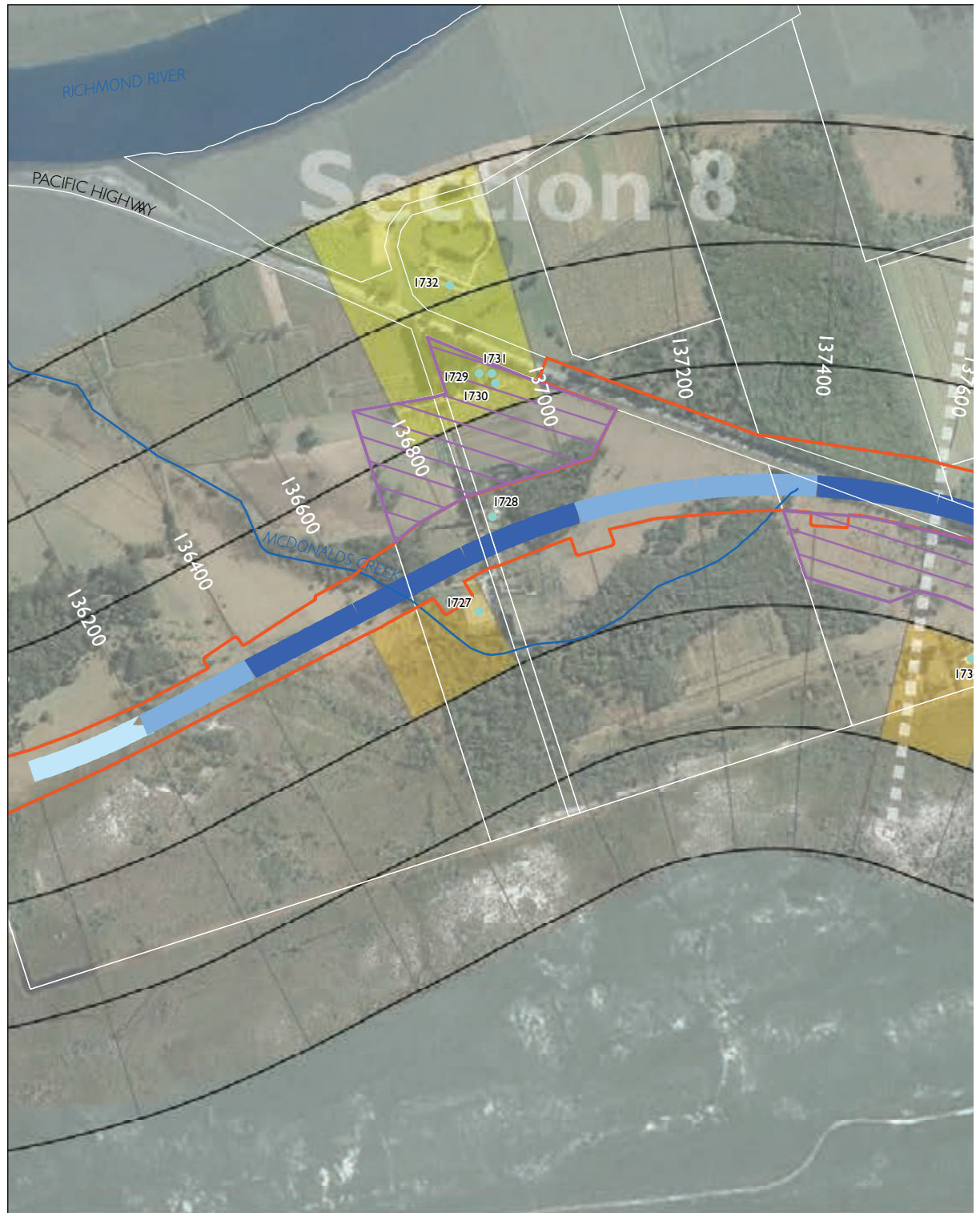


Appendix C.44 Out of hours construction impacts - paving and asphaltting



Upgrading the Pacific Highway - Woolgoolga to Ballina Upgrade

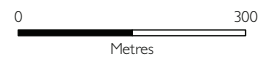


I:\ENVR\Projects\EN02829\Technical\Spatial\Directory\ArcGIS\Spatial\_Reports\Phase2\Noise\_and\_Vibration\EN02829\_GIS\_NV\_F002\_CVI.mxd

Out of hours impact areas

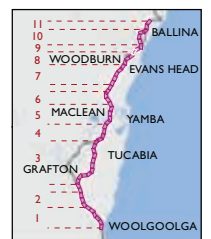
- No impact
- Low impact
- Moderate impact
- High impact

| NCA Zones |      |
|-----------|------|
| Zone F    | 200m |
| Zone E    | 200m |
| Zone D    | 200m |
| Zone C    | 200m |
| Zone B    | 200m |
| Zone A    | 200m |



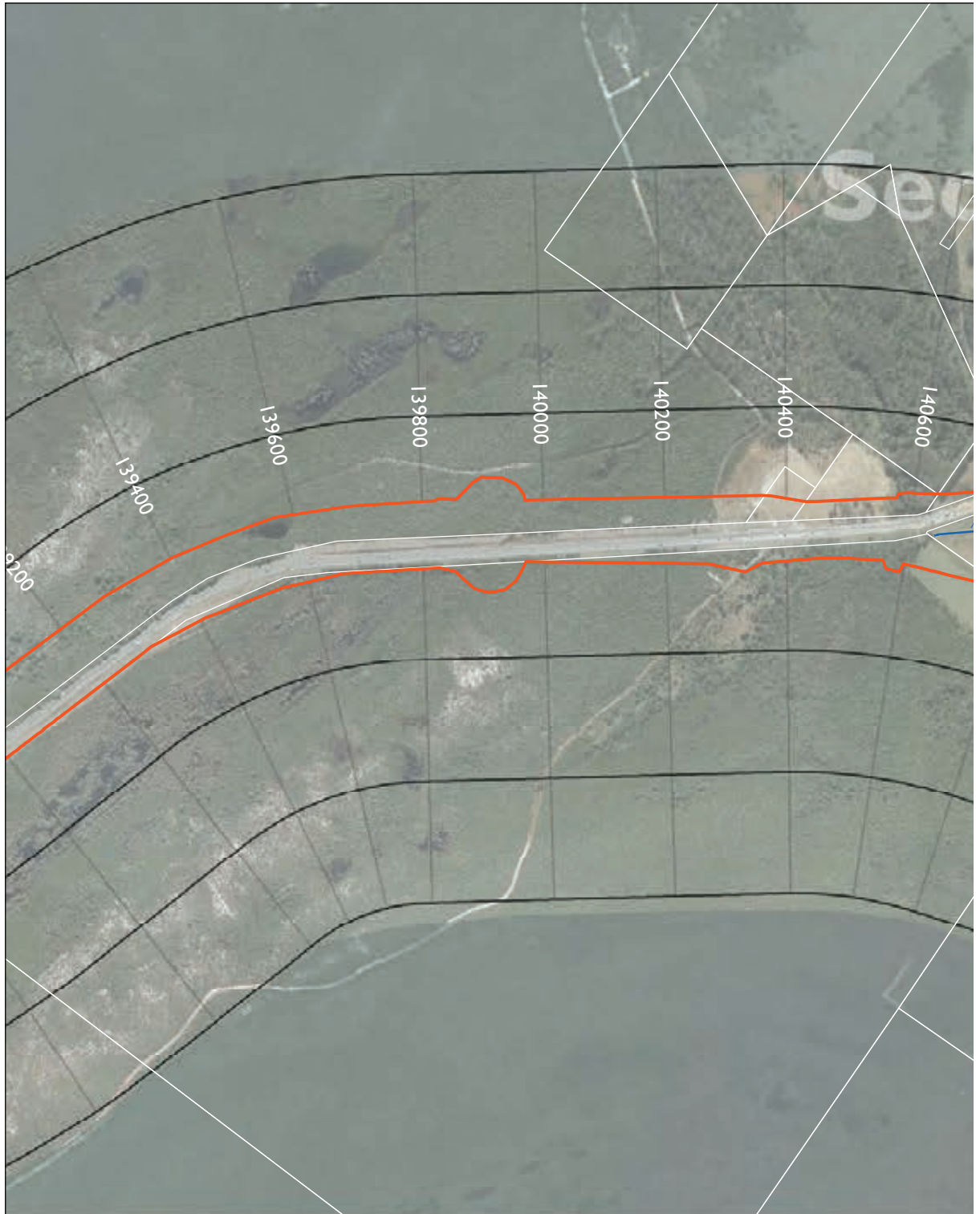
1:10,000

**SHEET 44 of 52**



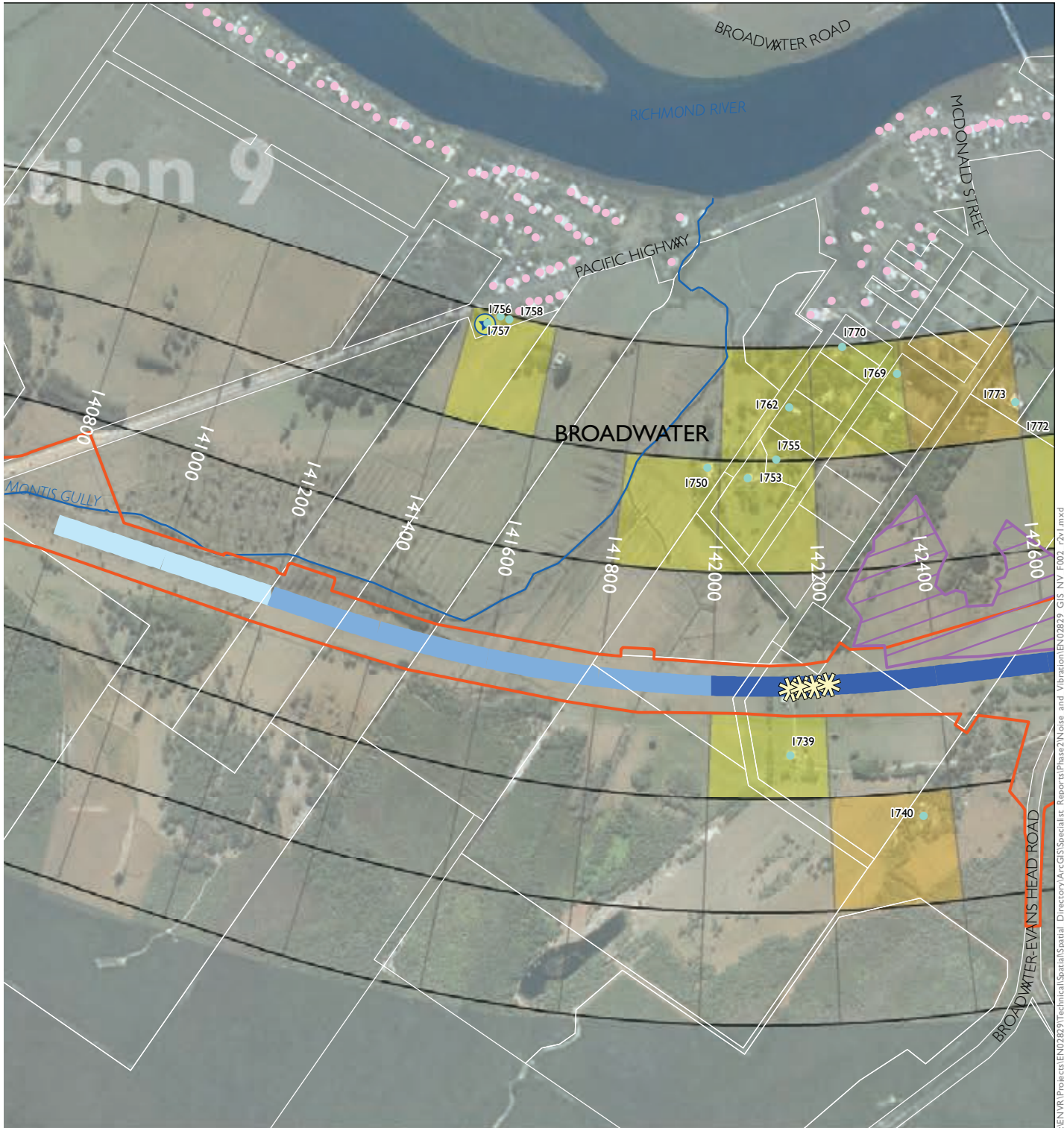


Appendix C.45 Out of hours construction impacts - paving and asphaltting



- |                                       |                               |   |
|---------------------------------------|-------------------------------|---|
| The project                           | Receiver location             | Out of hours work areas                             |
| Upgrade completed to dual carriageway | Receiver location outside NCA | Unrestricted  |
| Upgrade under construction            | Logger location               | Restricted with consultation                        |
| Ancillary site                        | Blasting location             | Restricted with further assessment and consultation |
|                                       | Bridge                        | Highly restricted                                   |

# Upgrading the Pacific Highway - Woolgoolga to Ballina Upgrade



I:\ENVR\Projects\EN02829\Technical\Spatial\_Directory\ArcGIS\Spatial\_Reports\Phase2\Noise\_and\_Vibration\EN02829\_GIS\_NV\_F002\_rv1.mxd

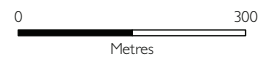
### Out of hours impact areas

- No impact
- Low impact
- Moderate impact
- High impact

| NCA Zones |        |
|-----------|--------|
|           | Zone F |
|           | Zone E |
|           | Zone D |
|           | Zone C |
|           | Zone B |
|           | Zone A |

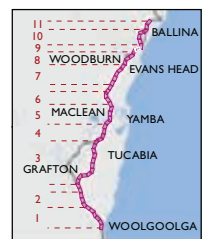
200m

200m



1:10,000

**SHEET 45 of 52**

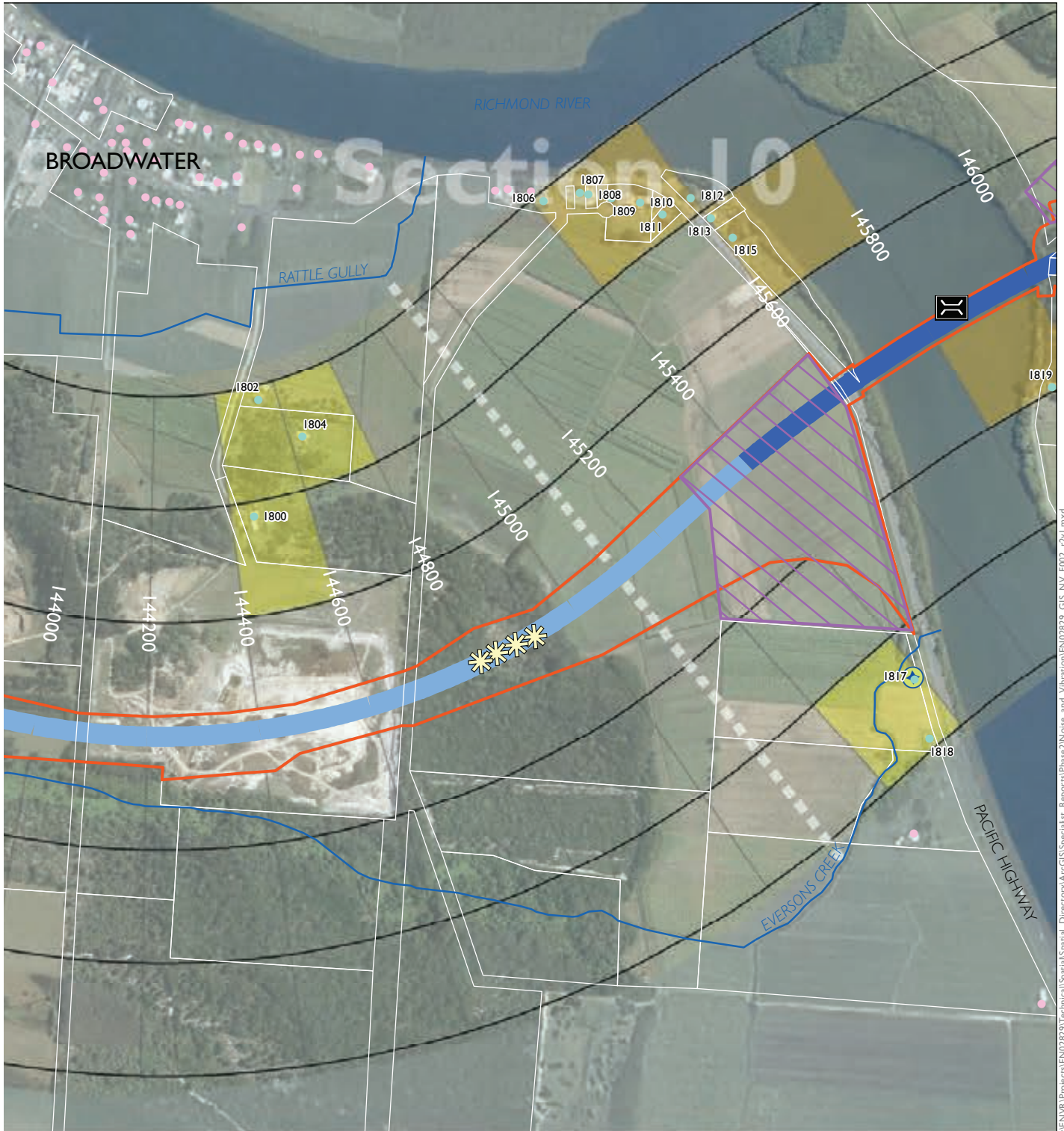




Appendix C.46 Out of hours construction impacts - paving and asphaltting



# Upgrading the Pacific Highway - Woolgoolga to Ballina Upgrade



I:\ENVR\Projects\EN02829\Technical\Spatial\_Directory\ArcGIS\Spatial\_Reports\Phase2\Noise\_and\_Vibration\EN02829\_GIS\_NV\_F002\_r2v1.mxd

### Out of hours impact areas

- No impact
- Low impact
- Moderate impact
- High impact

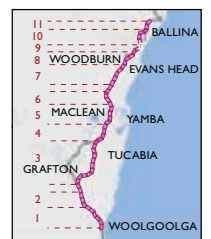
| NCA Zones |      |
|-----------|------|
| Zone F    | 200m |
| Zone E    | 200m |
| Zone D    | 200m |
| Zone C    | 200m |
| Zone B    | 200m |
| Zone A    | 200m |

0  300  
Metres



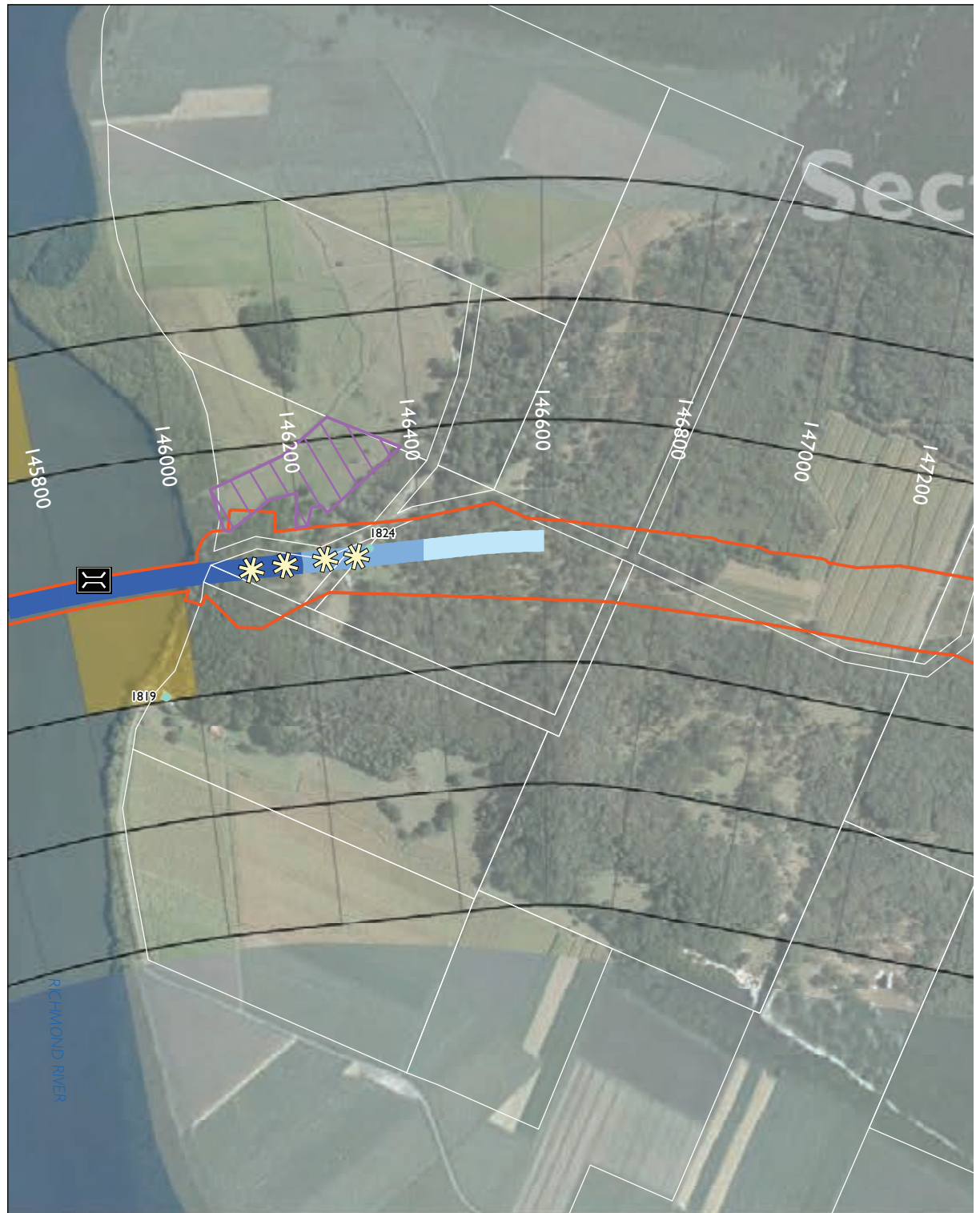
1:10,000

**SHEET 46 of 52**



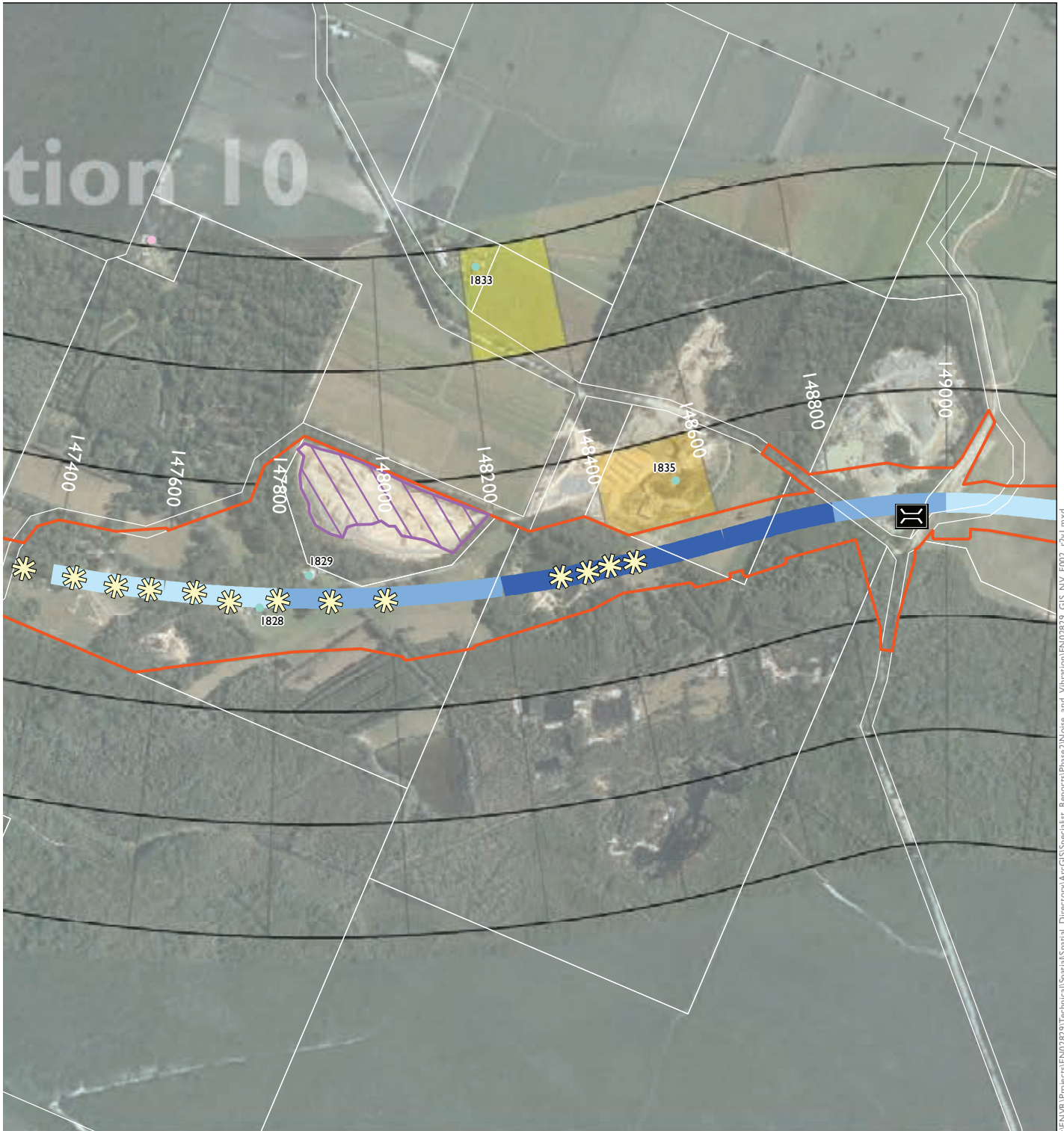


Appendix C.47 Out of hours construction impacts - paving and asphaltting



- |                                       |                               |   |
|---------------------------------------|-------------------------------|---|
| The project                           | Receiver location             | <b>Out of hours work areas</b>                      |
| Upgrade completed to dual carriageway | Receiver location outside NCA | Unrestricted  |
| Upgrade under construction            | Logger location               | Restricted with consultation                        |
| Ancillary site                        | Blasting location             | Restricted with further assessment and consultation |
|                                       | Bridge                        | Highly restricted                                   |

# Upgrading the Pacific Highway - Woolgoolga to Ballina Upgrade

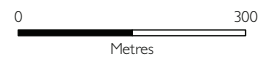


I:\ENVR\Projects\EN02829\Technical\Spatial\Spatial\_Rep\Phase2\Noise\_and\_Vibration\EN02829\_GIS\_NV\_F002\_rv1.mxd

### Out of hours impact areas

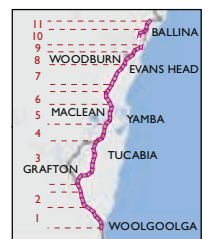
- No impact
- Low impact
- Moderate impact
- High impact

| NCA Zones |      |
|-----------|------|
| Zone F    | 200m |
| Zone E    | 200m |
| Zone D    | 200m |
| Zone C    | 200m |
| Zone B    | 200m |
| Zone A    | 200m |



1:10,000

**SHEET 47 of 52**



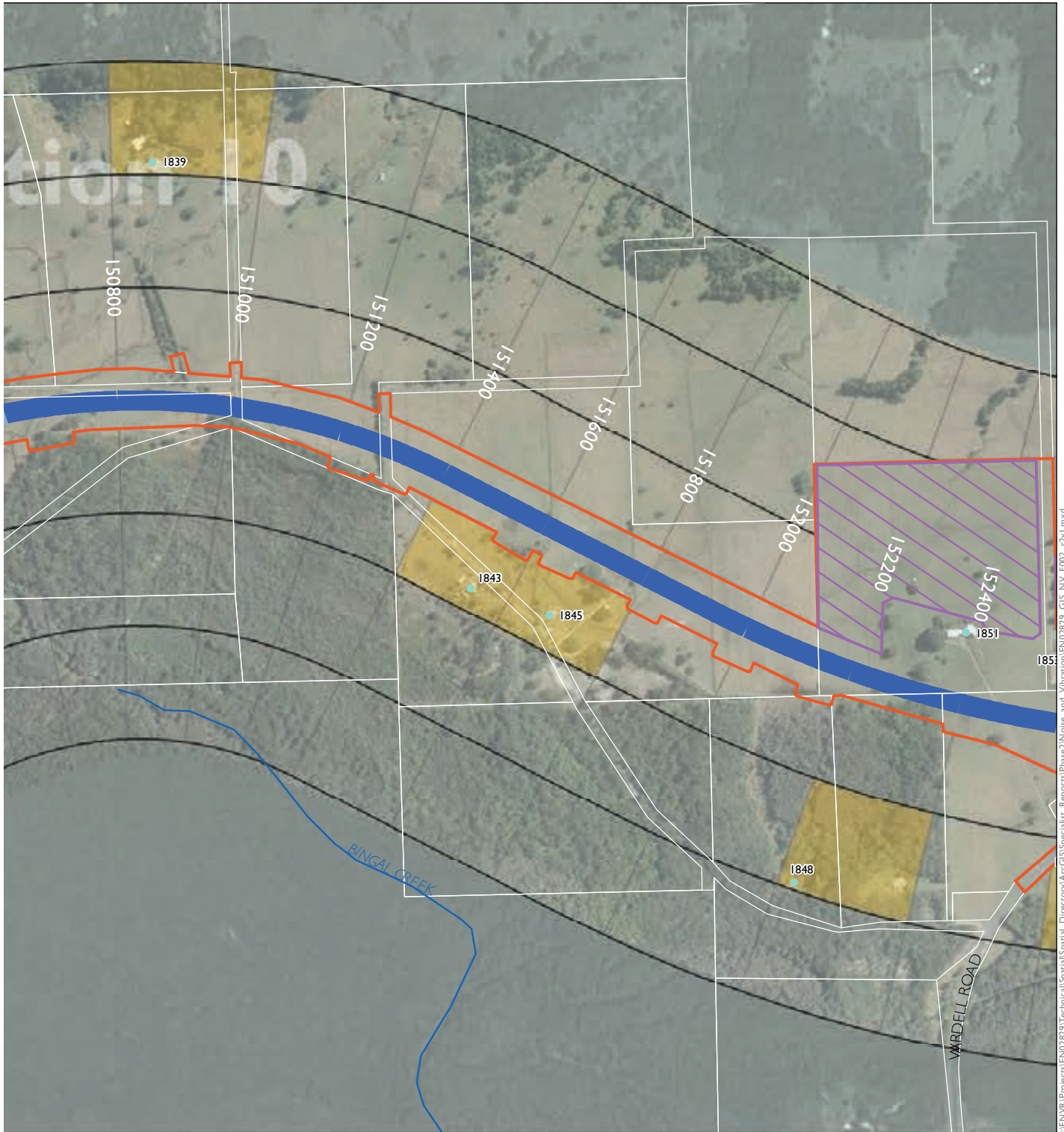


Appendix C.48 Out of hours construction impacts - paving and asphaltting



- |                                       |                               |   |
|---------------------------------------|-------------------------------|---|
| The project                           | Receiver location             | <b>Out of hours work areas</b>                      |
| Upgrade completed to dual carriageway | Receiver location outside NCA | Unrestricted  |
| Upgrade under construction            | Logger location               | Restricted with consultation                        |
| Ancillary site                        | Blasting location             | Restricted with further assessment and consultation |
|                                       | Bridge                        | Highly restricted                                   |

# Upgrading the Pacific Highway - Woolgoolga to Ballina Upgrade



I:\ENVR\Projects\EN02829\Technical\Spatial\_Directory\ArcGIS\Specialist\_Reports\Phase2\Noise\_and\_Vibration\EN02829\_GIS\_NV\_F002\_rv1.mxd

### Out of hours impact areas

- No impact
- Low impact
- Moderate impact
- High impact

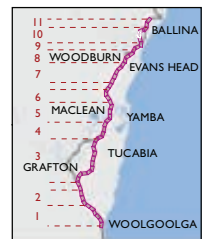
| NCA Zones |  |
|-----------|--|
| Zone F    |  |
| Zone E    |  |
| Zone D    |  |
| Zone C    |  |
| Zone B    |  |
| Zone A    |  |

200m  
 200m



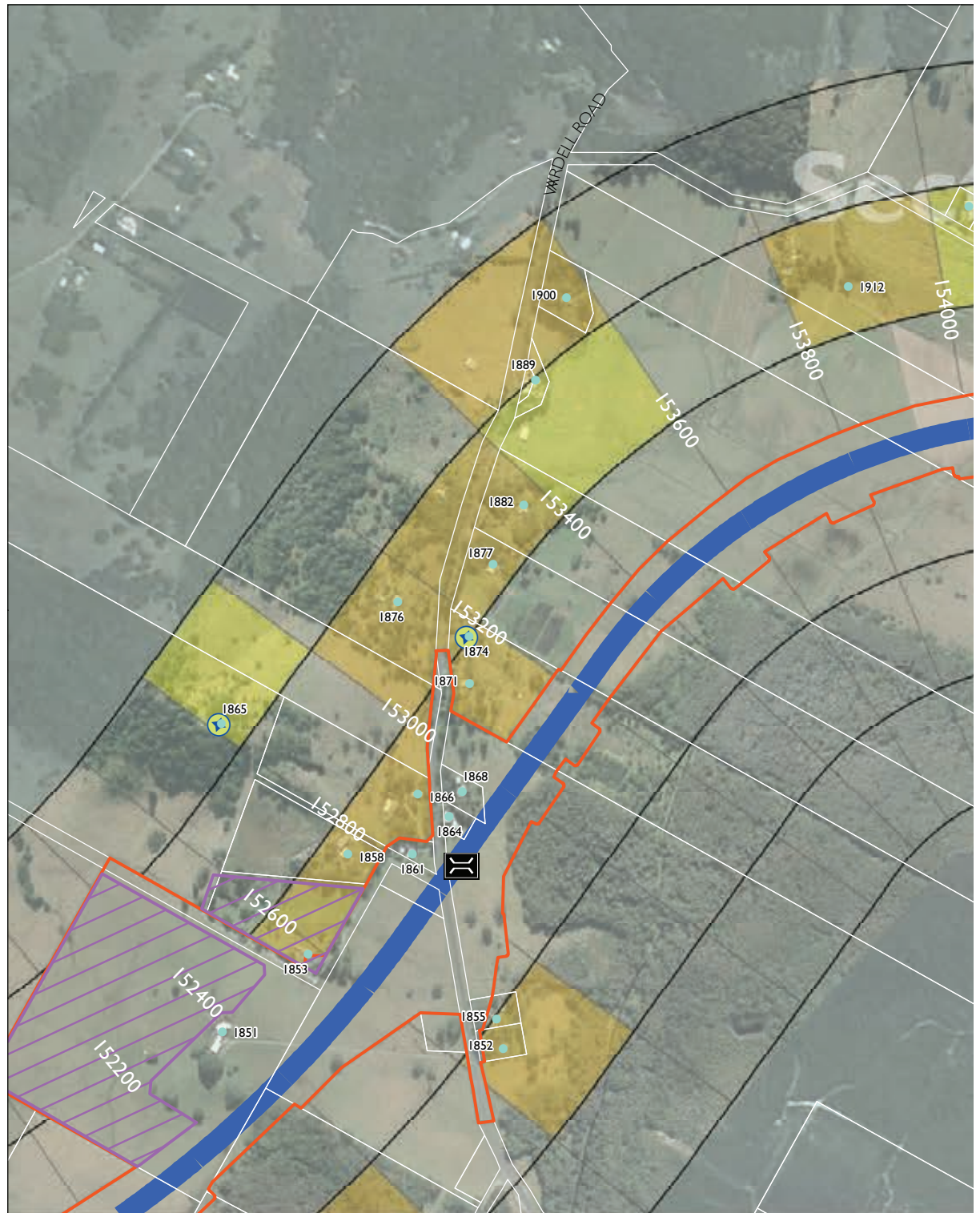
1:10,000

**SHEET 48 of 52**



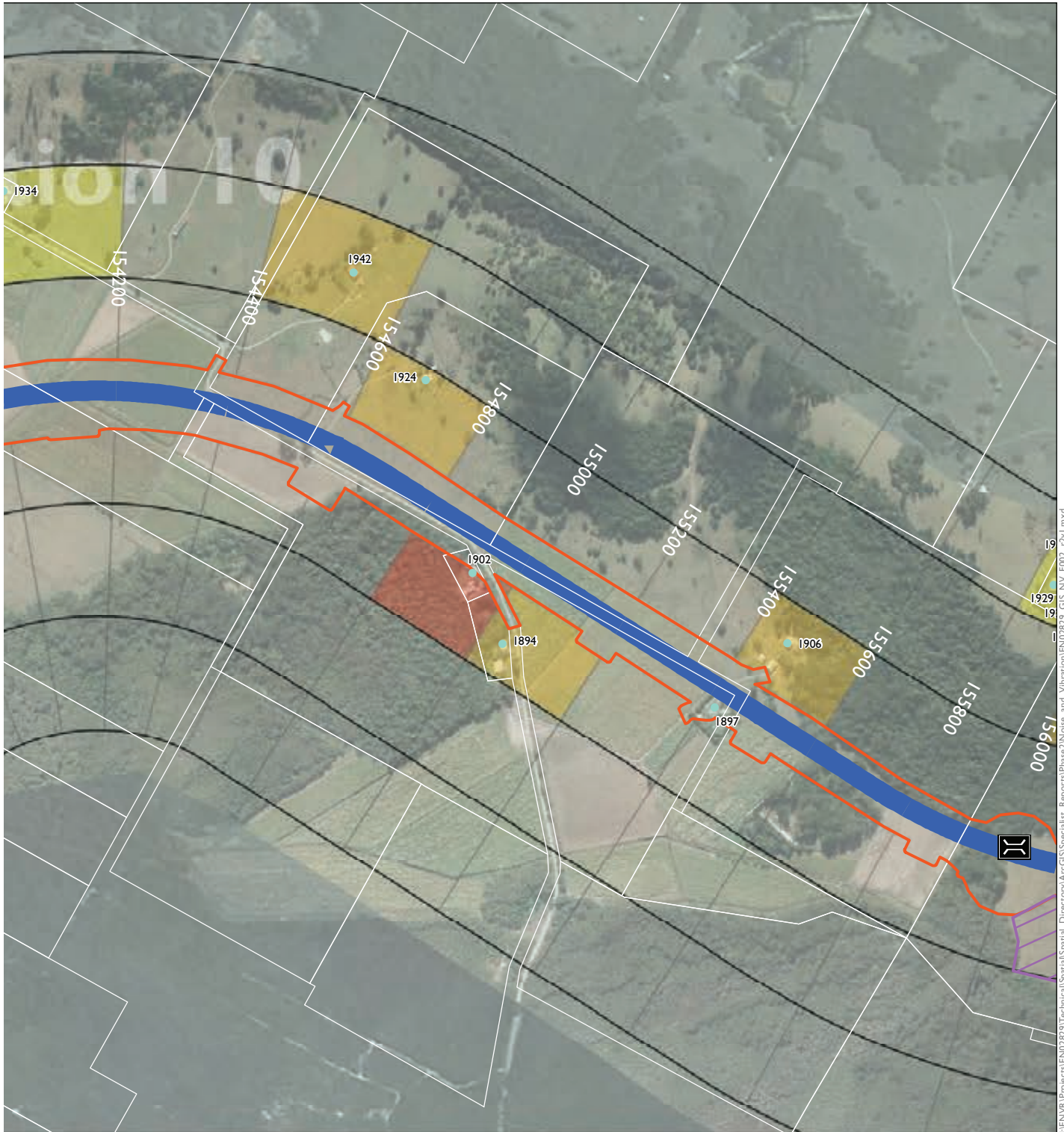


Appendix C.49 Out of hours construction impacts - paving and asphaltting



- |                                       |                               |   |
|---------------------------------------|-------------------------------|---|
| The project                           | Receiver location             | Unrestricted  |
| Upgrade completed to dual carriageway | Receiver location outside NCA | Restricted with consultation                        |
| Upgrade under construction            | Logger location               | Restricted with further assessment and consultation |
| Ancillary site                        | Blasting location             | Highly restricted                                   |
|                                       | Bridge                        |   |

# Upgrading the Pacific Highway - Woolgoolga to Ballina Upgrade

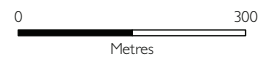


I:\ENVR\Projects\EN02829\Technical\Spatial\_Spatial\_ArcGIS\Spatial\_Rep\Phase2\Noise\_and\_Vibration\EN02829\_GIS\_NV\_F002\_rv1.mxd

### Out of hours impact areas

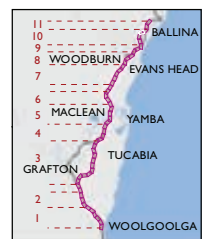
- No impact
- Low impact
- Moderate impact
- High impact

| NCA Zones |      |
|-----------|------|
| Zone F    | 200m |
| Zone E    | 200m |
| Zone D    | 200m |
| Zone C    | 200m |
| Zone B    | 200m |
| Zone A    | 200m |



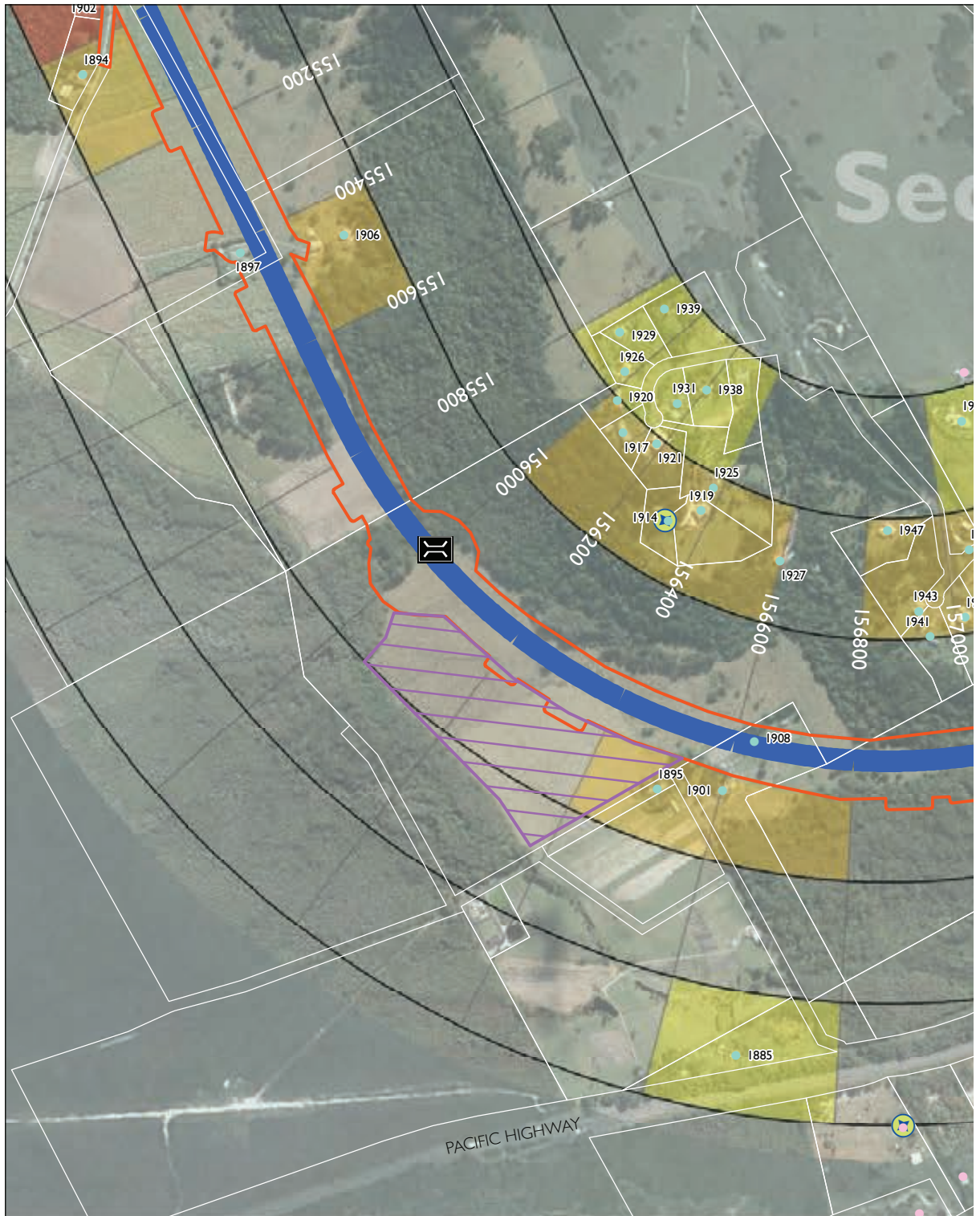
1:10,000

**SHEET 49 of 52**





Appendix C.50 Out of hours construction impacts - paving and asphaltting





# Upgrading the Pacific Highway - Woolgoolga to Ballina Upgrade



I:\ENVR\Projects\EN02829\Technical\Spatial\_Directory\ArcGIS\Spatial\_Reports\Phase2\Noise\_and\_Vibration\EN02829\_GIS\_NV\_F002\_r01.mxd

### Out of hours impact areas

- No impact
- Low impact
- Moderate impact
- High impact

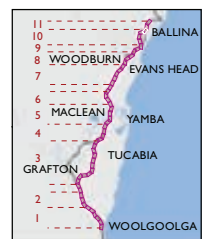
| NCA Zones |      |
|-----------|------|
| Zone F    | 200m |
| Zone E    | 200m |
| Zone D    | 200m |
| Zone C    | 200m |
| Zone B    | 200m |
| Zone A    | 200m |

0 300  
Metres



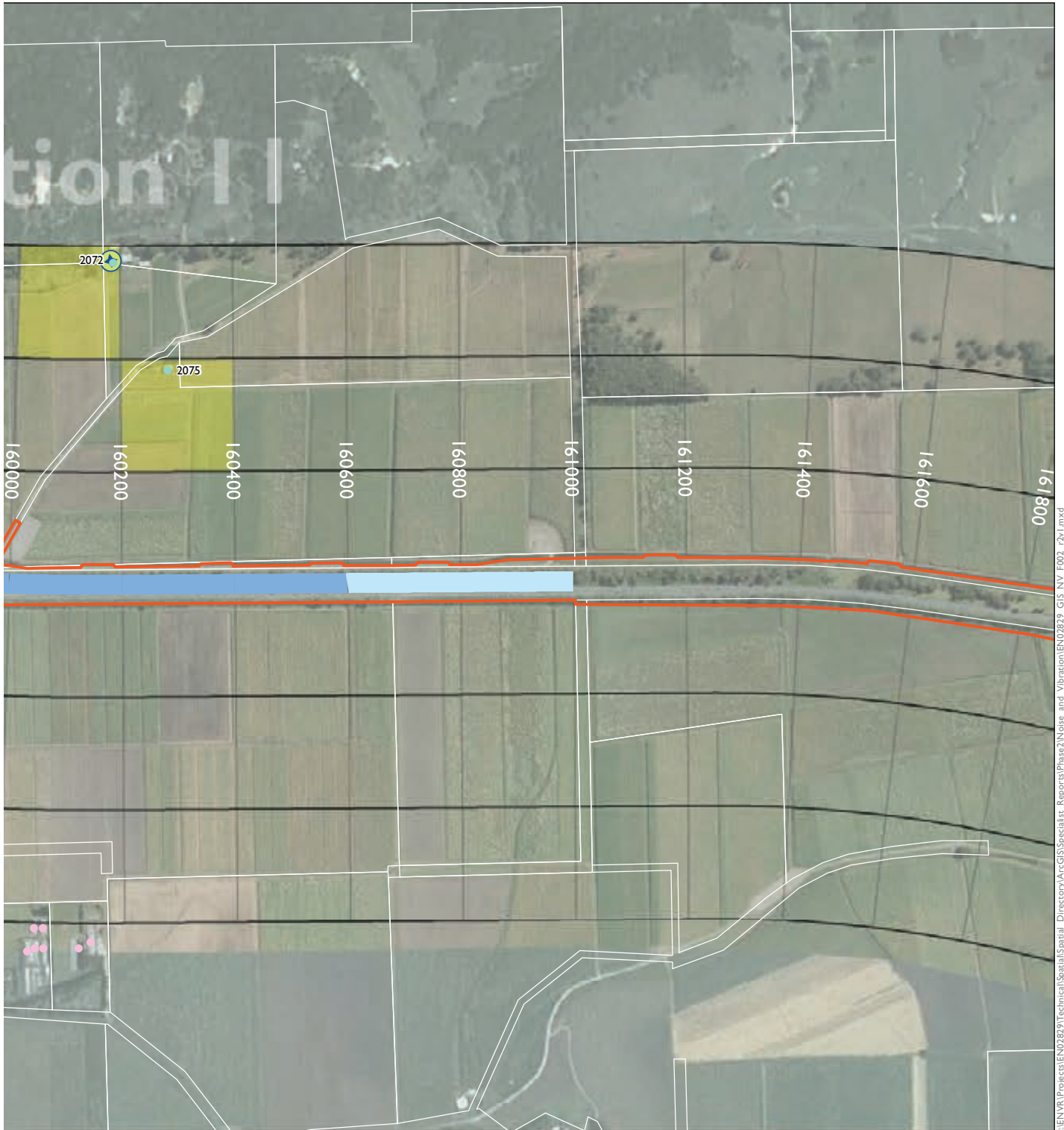
1:10,000

**SHEET 50 of 52**





# Upgrading the Pacific Highway - Woolgoolga to Ballina Upgrade



\\ENVR\Projects\EN02829\Technical\Spatial\_Directory\ArcGIS\Spatial\_Reports\Phase2\Noise\_and\_Vibration\EN02829\_GIS\_NV\_F002\_r2v1.mxd

### Out of hours impact areas

- No impact
- Low impact
- Moderate impact
- High impact

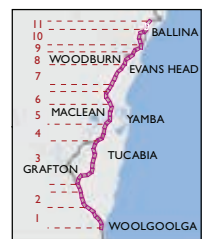
| NCA Zones |      |
|-----------|------|
| Zone F    | 200m |
| Zone E    | 200m |
| Zone D    | 200m |
| Zone C    | 200m |
| Zone B    | 200m |
| Zone A    | 200m |

0  300  
Metres

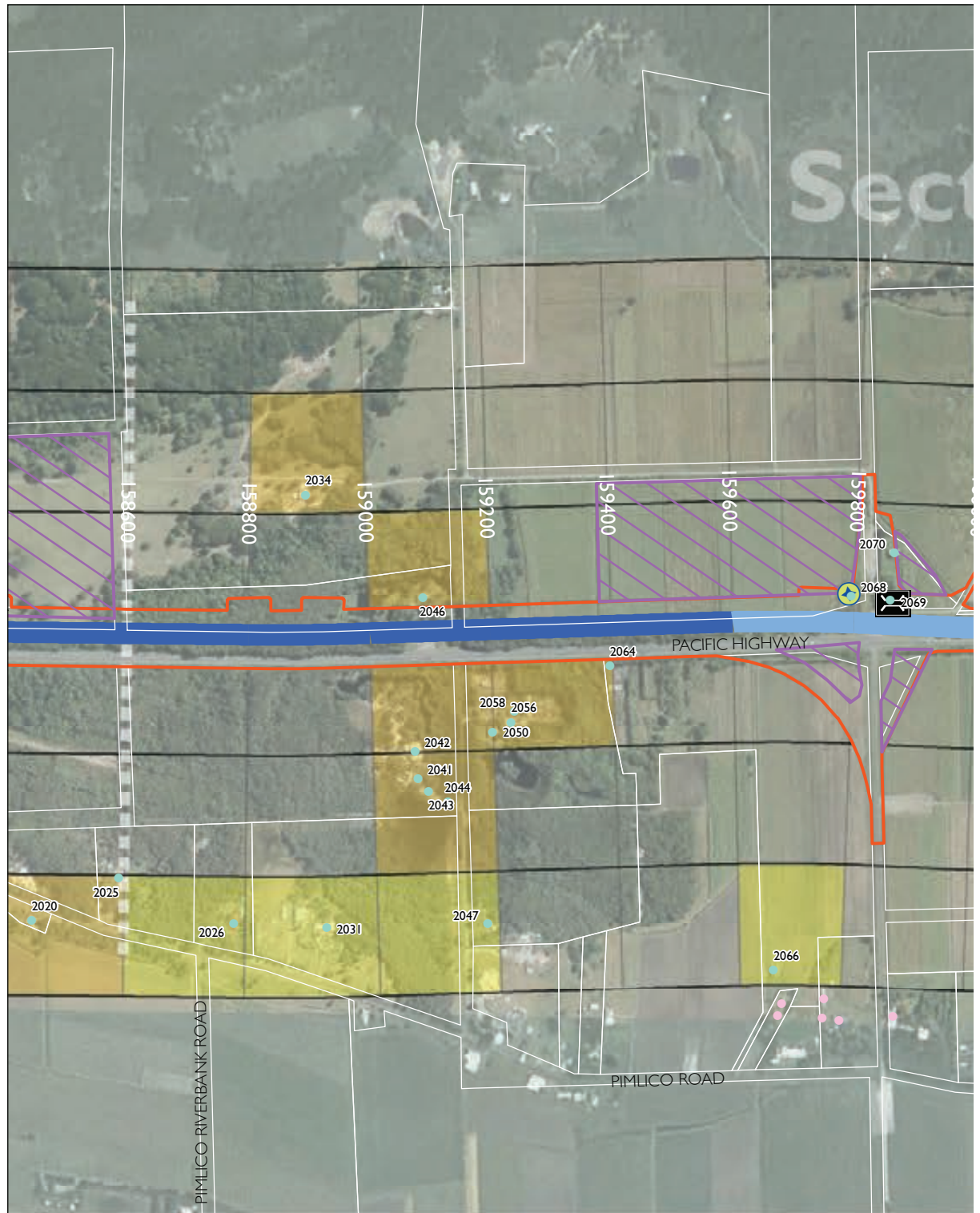


1:10,000

**SHEET 51 of 52**



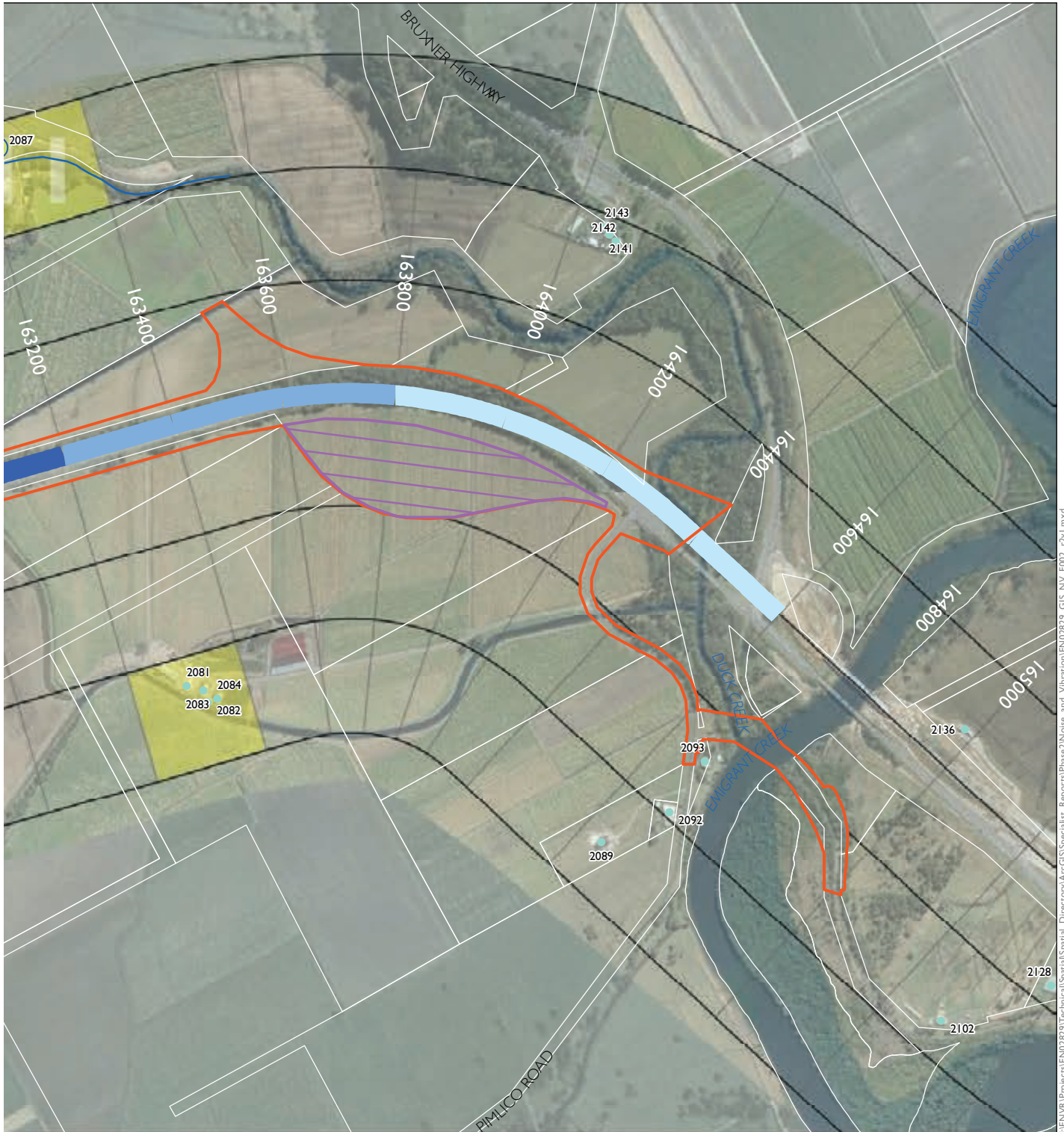
Appendix C.51 Out of hours construction impacts - paving and asphaltting



- |                                       |                               |   |
|---------------------------------------|-------------------------------|---|
| The project                           | Receiver location             | Unrestricted  |
| Upgrade completed to dual carriageway | Receiver location outside NCA | Restricted with consultation                        |
| Upgrade under construction            | Logger location               | Restricted with further assessment and consultation |
| Ancillary site                        | Blasting location             | Highly restricted                                   |
|                                       | Bridge                        |   |



# Upgrading the Pacific Highway - Woolgoolga to Ballina Upgrade



I:\ENVR\Projects\EN02829\Technical\Spatial\_Directory\ArcGIS\Spatial\_Reports\Phase2\Noise\_and\_Vibration\EN02829\_GIS\_NV\_F002\_rv1.mxd

### Out of hours impact areas

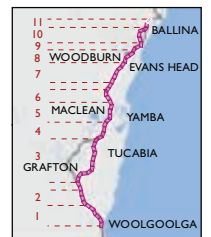
- No impact
- Low impact
- Moderate impact
- High impact

| NCA Zones |      |
|-----------|------|
| Zone F    | 200m |
| Zone E    | 200m |
| Zone D    | 200m |
| Zone C    | 200m |
| Zone B    | 200m |
| Zone A    | 200m |



1:10,000

**SHEET 52 of 52**



Appendix C.52 Out of hours construction impacts - paving and asphaltting



- |                                       |                               |   |
|---------------------------------------|-------------------------------|---|
| The project                           | Receiver location             | <b>Out of hours work areas</b>                      |
| Upgrade completed to dual carriageway | Receiver location outside NCA | Unrestricted  |
| Upgrade under construction            | Logger location               | Restricted with consultation                        |
| Ancillary site                        | Blasting location             | Restricted with further assessment and consultation |
|                                       | Bridge                        | Highly restricted                                   |