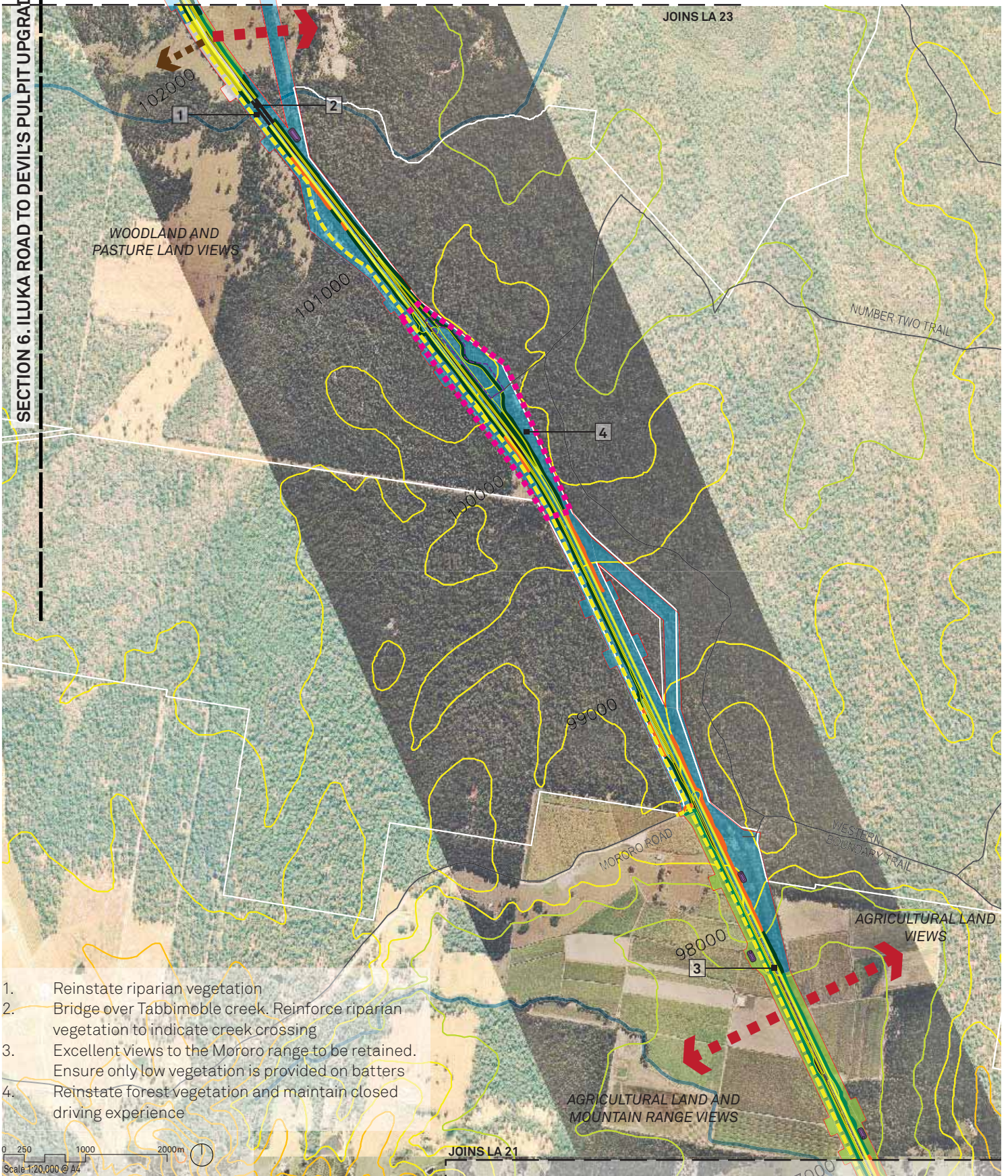
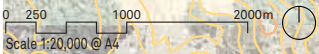


SECTION 6. ILUKA ROAD TO DEVIL'S PULPIT UPGRADE



1. Reinstatement of riparian vegetation
2. Bridge over Tabbimoble creek. Reinforce riparian vegetation to indicate creek crossing
3. Excellent views to the Mororo range to be retained. Ensure only low vegetation is provided on batters
4. Reinstatement of forest vegetation and maintain closed driving experience



Legend

- Refer to page 246 for full legend
- Project corridor and chainages
 - Strong ridgelines
 - Notional ridgelines
 - Initial stage
 - Ultimate stage
 - Waterways
 - Contours at 10m interval
 - National Parks, State Forests, Nature Reserves, Conservation Areas
 - Existing roads

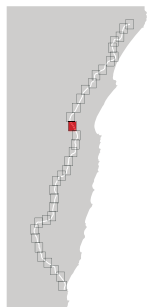
Landscape Strategy

- Open views
- Filtered views
- Place marking opportunity
- Rest Areas
- Bridges (Proposed carriageways)
- Bridges (Local access road)
- Acoustic barriers
- Fauna bridge
- Fill Batter-Type 1
- Fill Batter-Type 2
- Fill Batter-Type 3
- Cut Batter-Type 1
- Cut Batter-Type 2

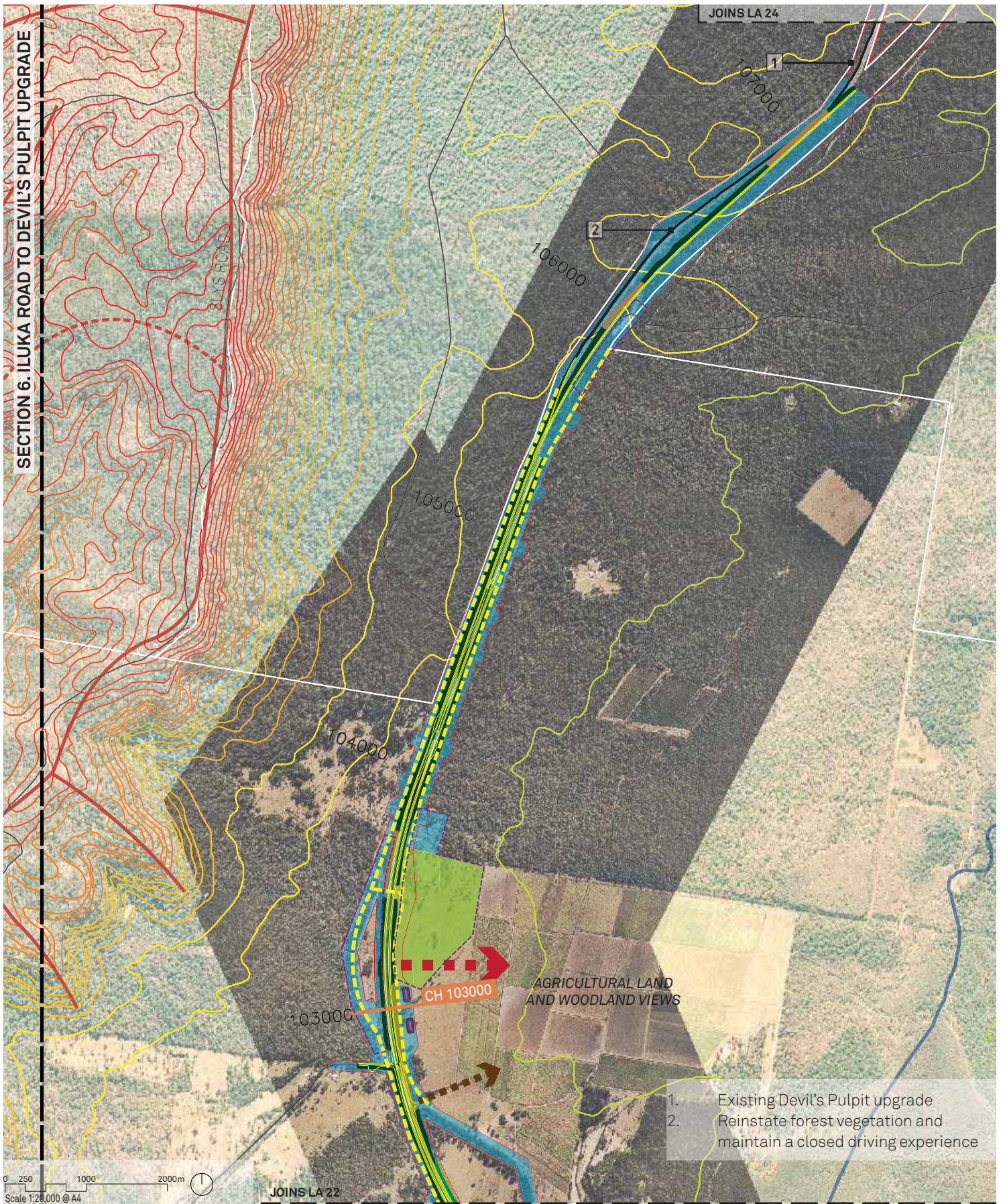
Revegetation

- Forest Outcome
- Filtered Landscape Outcome
- Agriculture Outcome
- Construction Zone Outcome
- Water quality control ponds

LA 22



Overall Landscape Strategy plan



Legend

- Refer to page 246 for full legend
- Project corridor and chainages
 - Strong ridgelines
 - Notional ridgelines
 - Initial stage
 - Ultimate stage
 - Waterways
 - Contours at 10m interval
 - National Parks, State Forests, Nature Reserves, Conservation Areas
 - Existing roads

Landscape Strategy

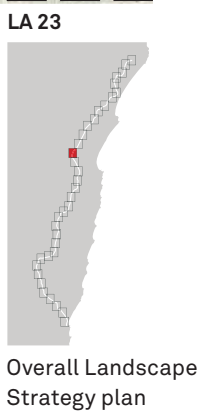
- Open views
- Filtered views
- Place marking opportunity
- Rest Areas
- Bridges (Proposed carriageways)
- Bridges (Local access road)

Revegetation

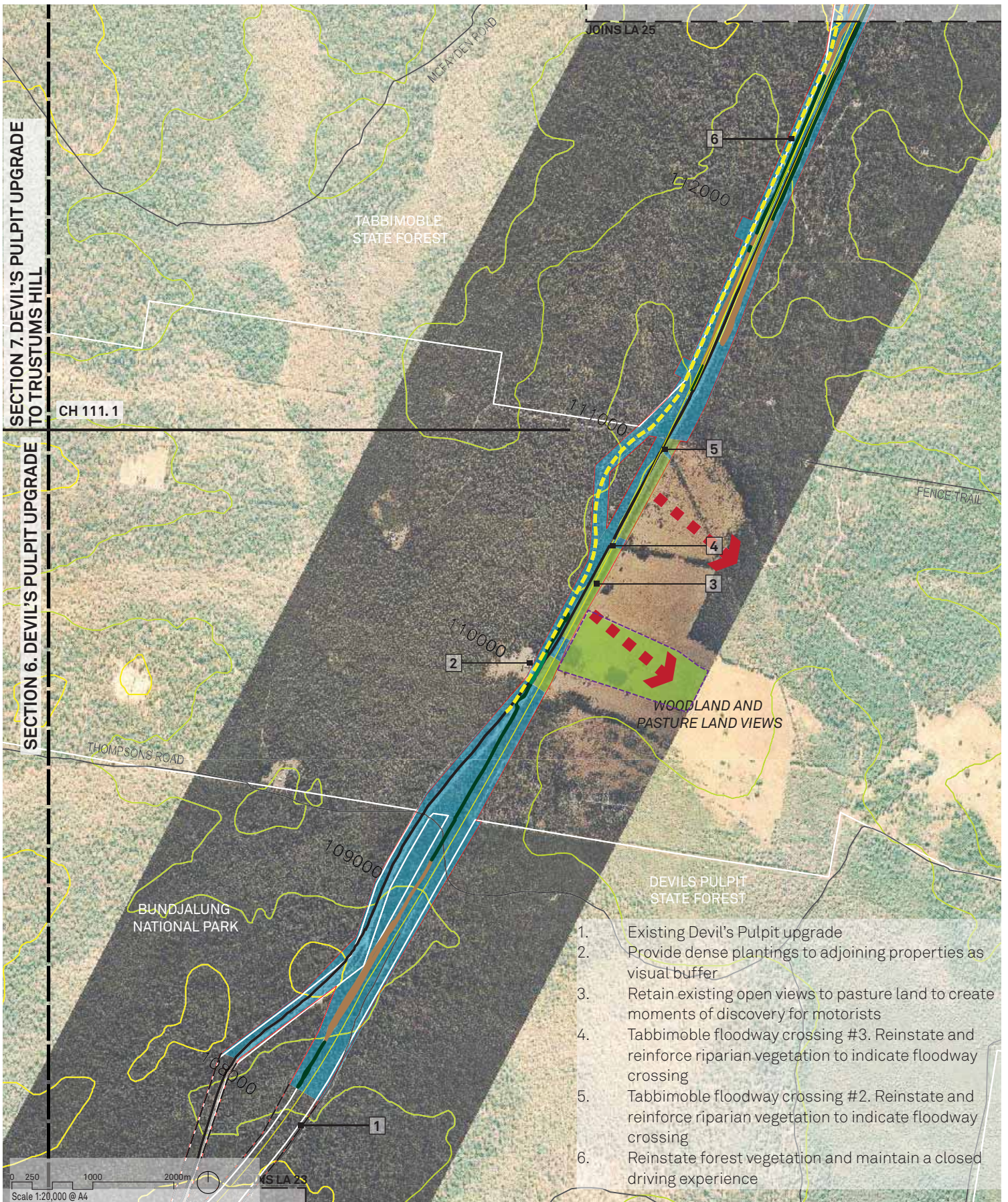
- Acoustic barriers
- Fauna bridge
- Fill Batter-Type 1
- Fill Batter-Type 2
- Fill Batter-Type 3
- Cut Batter-Type 1
- Cut Batter-Type 2

LA 23

- Forest Outcome
- Filtered Landscape Outcome
- Agriculture Outcome
- Construction Zone Outcome
- Water quality control ponds



1. Existing Devil's Pulpit upgrade
2. Reinstate forest vegetation and maintain a closed driving experience



Legend

Refer to page 246 for full legend

- Project corridor and chainages
- Strong ridgelines
- Notional ridgelines
- Initial stage
- Ultimate stage
- Waterways
- Contours at 10m interval
- National Parks, State Forests, Nature Reserves, Conservation Areas
- Existing roads

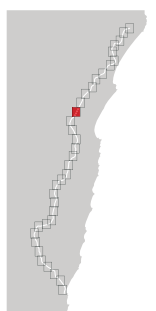
Landscape Strategy

- Open views
- Filtered views
- Place marking opportunity
- Rest Areas
- Bridges (Proposed carriageways)
- Bridges (Local access road)
- Acoustic barriers
- Fauna bridge
- Fill Batter-Type 1
- Fill Batter-Type 2
- Fill Batter-Type 3
- Cut Batter-Type 1
- Cut Batter-Type 2

Revegetation

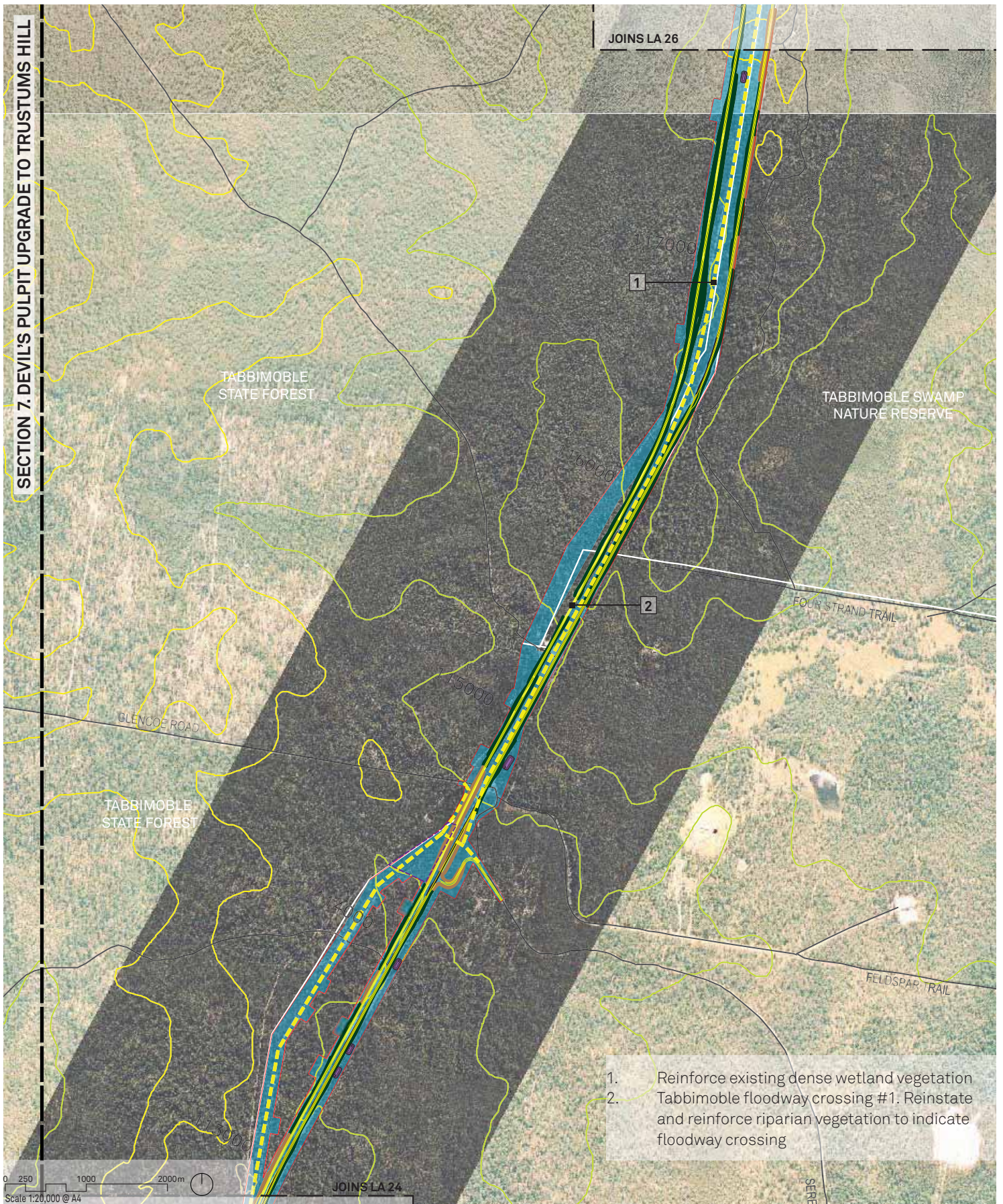
- Forest Outcome
- Filtered Landscape Outcome
- Agriculture Outcome
- Construction Zone Outcome
- Water quality control ponds

LA 24



Overall Landscape Strategy plan

SECTION 7. DEVIL'S PULPIT UPGRADE TO TRUSTUMS HILL



1. Reinforce existing dense wetland vegetation
2. Tabbimoble floodway crossing #1. Reinststate and reinforce riparian vegetation to indicate floodway crossing

0 250 1000 2000m
Scale 1:20,000 @ A4

Legend
Refer to page 246 for full legend

- Project corridor and chainages
- Strong ridgelines
- Notional ridgelines
- Initial stage
- Ultimate stage
- Waterways
- Contours at 10m interval
- National Parks, State Forests, Nature Reserves, Conservation Areas
- Existing roads

Landscape Strategy

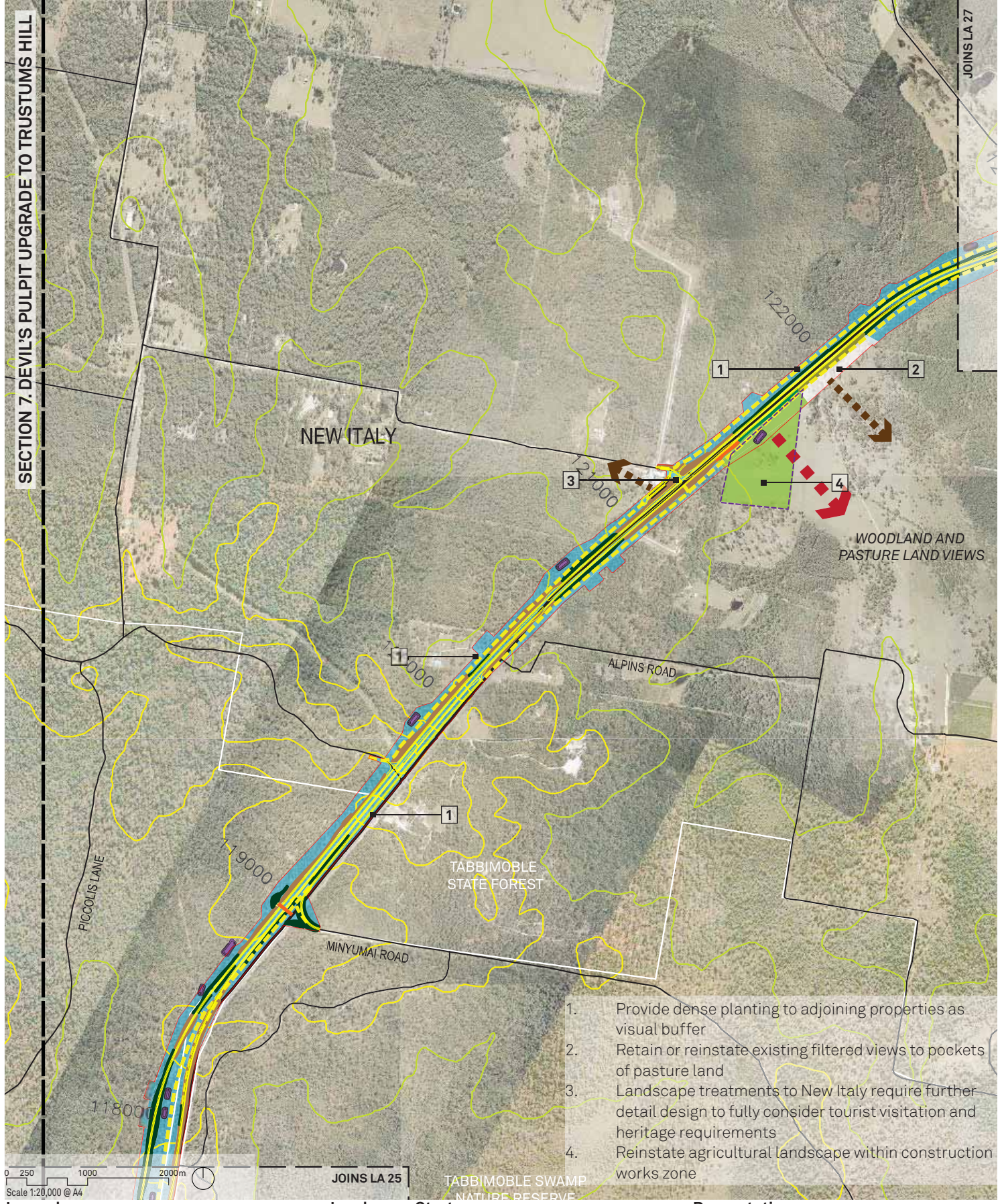
- Open views
- Filtered views
- Place marking opportunity
- Rest Areas
- Bridges (Proposed carriageways)
- Bridges (Local access road)
- Acoustic barriers
- Fauna bridge
- Fill Batter-Type 1
- Fill Batter-Type 2
- Fill Batter-Type 3
- Cut Batter-Type 1
- Cut Batter-Type 2

Revegetation

- Forest Outcome
- Filtered Landscape Outcome
- Agriculture Outcome
- Construction Zone Outcome
- Water quality control ponds

LA 25

Overall Landscape Strategy plan



SECTION 7. DEVIL'S PULPIT UPGRADE TO TRUSTOMS HILL

JOINS LA 27

NEW ITALY

WOODLAND AND PASTURE LAND VIEWS

TABBIMOBLE STATE FOREST

TABBIMOBLE SWAMP NATURE RESERVE

1. Provide dense planting to adjoining properties as visual buffer
2. Retain or reinstate existing filtered views to pockets of pasture land
3. Landscape treatments to New Italy require further detail design to fully consider tourist visitation and heritage requirements
4. Reinstate agricultural landscape within construction works zone



Landscape Strategy

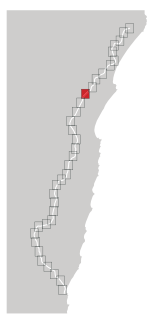
- Open views
- Filtered views
- Place marking opportunity
- Rest Areas
- Bridges (Proposed carriageways)
- Bridges (Local access road)
- Acoustic barriers
- Fauna bridge
- Fill Batter-Type 1
- Fill Batter-Type 2
- Fill Batter-Type 3
- Cut Batter-Type 1
- Cut Batter-Type 2

Revegetation

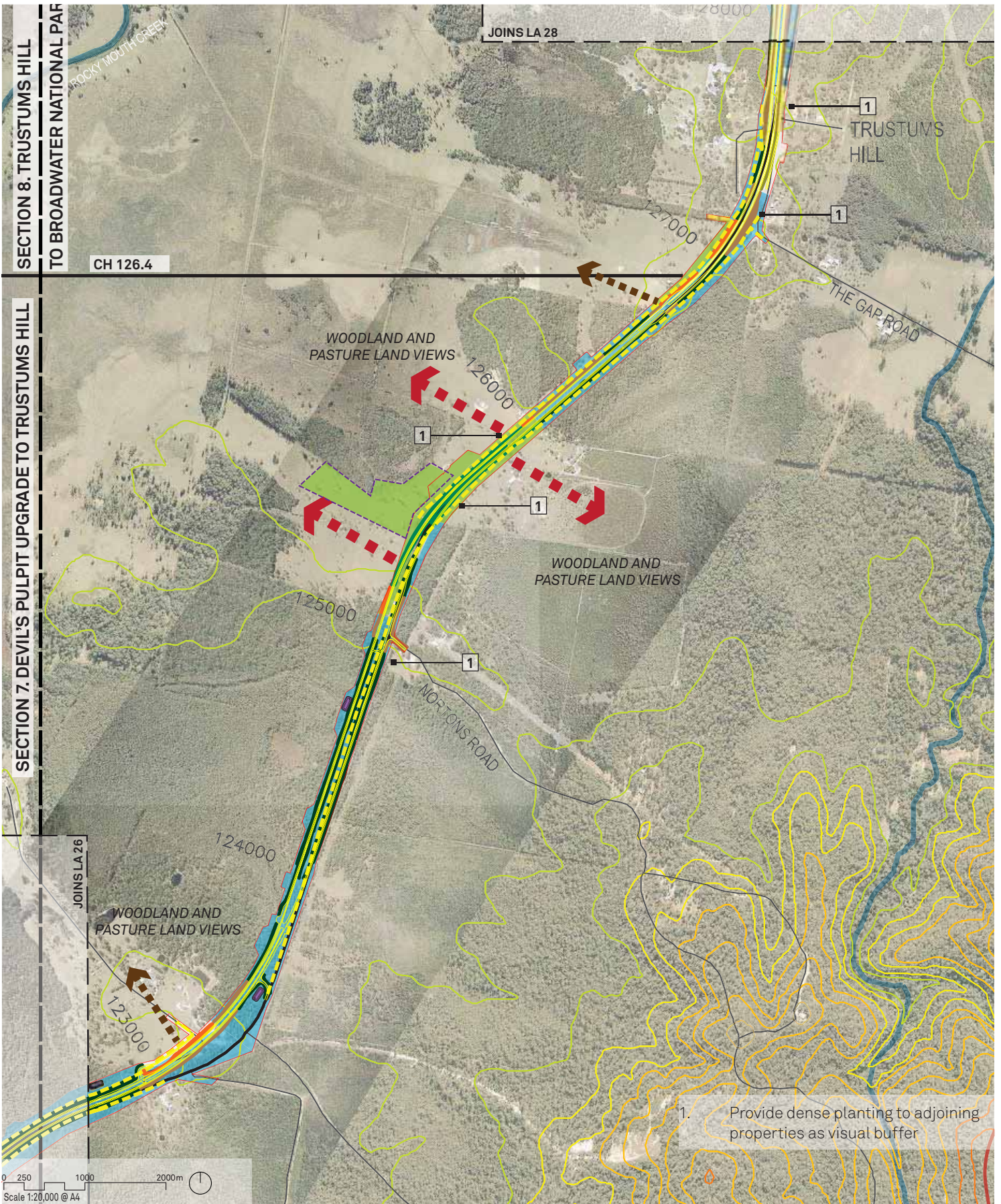
- Forest Outcome
- Filtered Landscape Outcome
- Agriculture Outcome
- Construction Zone Outcome
- Water quality control ponds

- Legend**
Refer to page 246 for full legend
- Project corridor and chainages
 - Strong ridgelines
 - Notional ridgelines
 - Initial stage
 - Ultimate stage
 - Waterways
 - Contours at 10m interval
 - National Parks, State Forests, Nature Reserves, Conservation Areas
 - Existing roads

LA 26



Overall Landscape Strategy plan



Legend
Refer to page 246 for full legend

- Project corridor and chainages
- Strong ridgelines
- Notional ridgelines
- Initial stage
- Ultimate stage
- Waterways
- Contours at 10m interval
- National Parks, State Forests, Nature Reserves, Conservation Areas
- Existing roads

Landscape Strategy

- Open views
- Filtered views
- Place marking opportunity
- Rest Areas
- Bridges (Proposed carriageways)
- Bridges (Local access road)
- Acoustic barriers
- Fauna bridge
- Fill Batter-Type 1
- Fill Batter-Type 2
- Fill Batter-Type 3
- Cut Batter-Type 1
- Cut Batter-Type 2

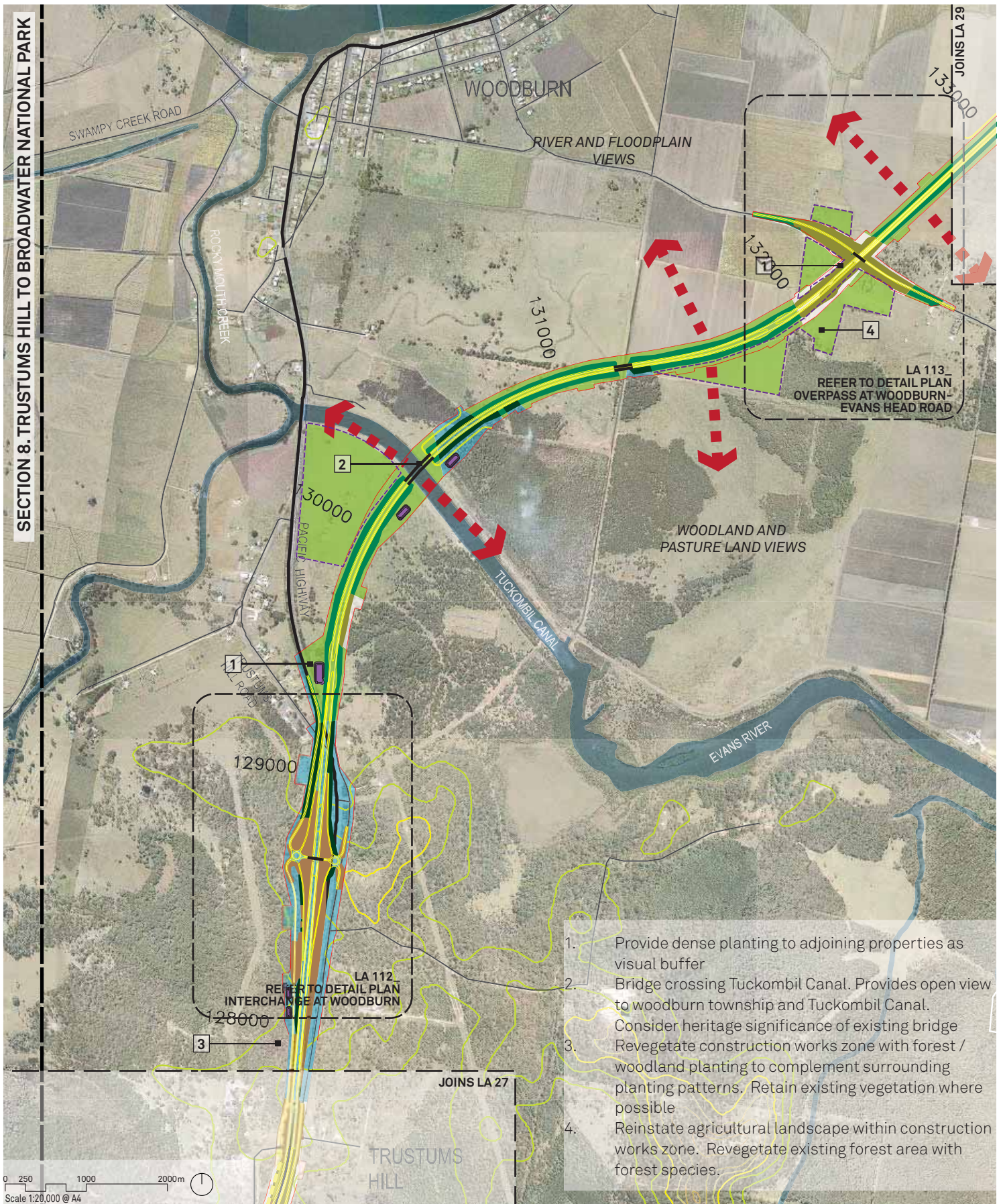
Revegetation

- Forest Outcome
- Filtered Landscape Outcome
- Agriculture Outcome
- Construction Zone Outcome
- Water quality control ponds

LA 27

Overall Landscape Strategy plan

SECTION 8. TRUSTUMS HILL TO BROADWATER NATIONAL PARK



1. Provide dense planting to adjoining properties as visual buffer
2. Bridge crossing Tuckombil Canal. Provides open view to woodburn township and Tuckombil Canal. Consider heritage significance of existing bridge
3. Revegetate construction works zone with forest / woodland planting to complement surrounding planting patterns. Retain existing vegetation where possible
4. Reinststate agricultural landscape within construction works zone. Revegetate existing forest area with forest species.

Legend
Refer to page 246 for full legend

- Project corridor and chainages
- Strong ridgelines
- Notional ridgelines
- Initial stage
- Ultimate stage
- Waterways
- Contours at 10m interval
- National Parks, State Forests, Nature Reserves, Conservation Areas
- Existing roads

Landscape Strategy

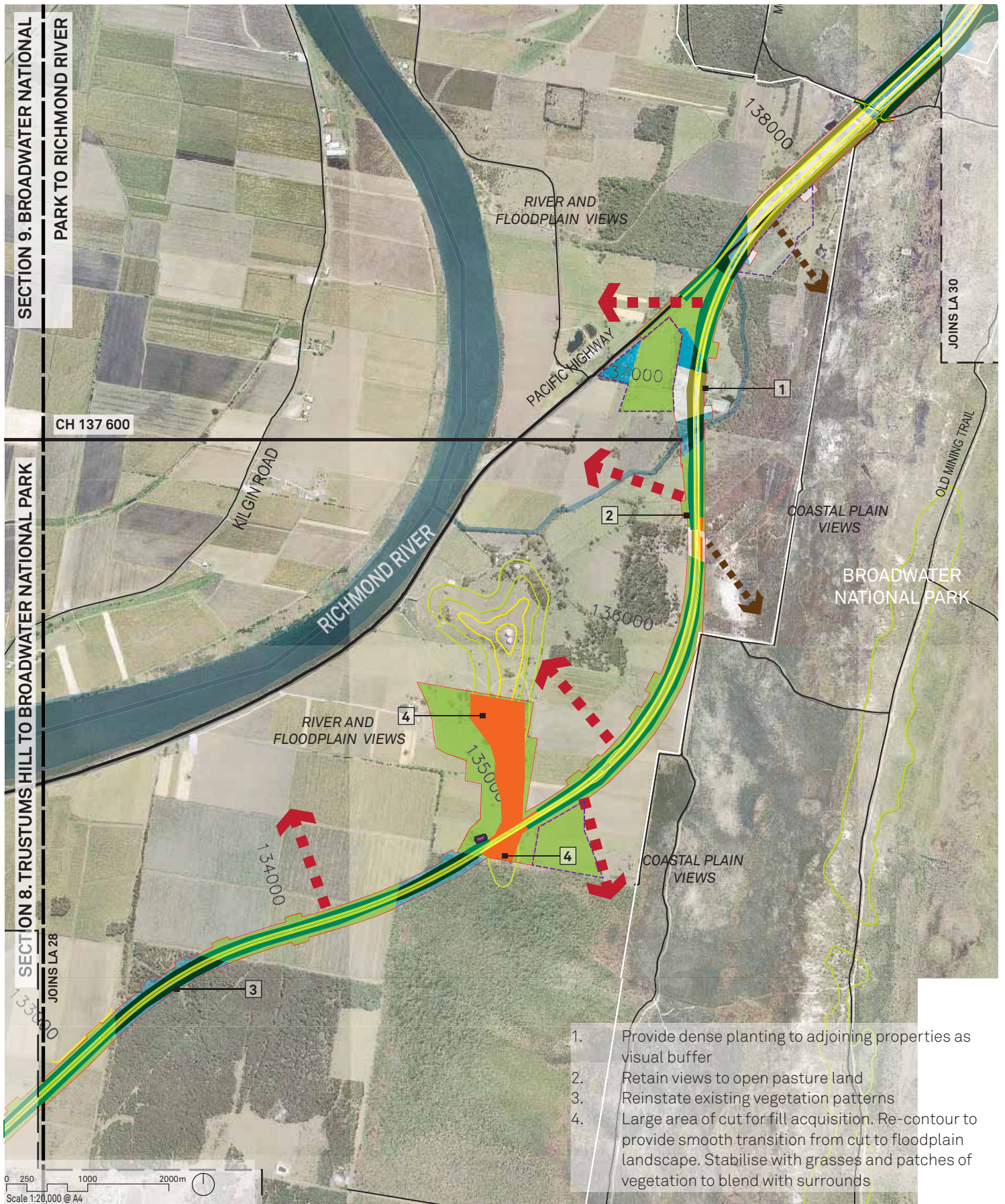
- Open views
- Filtered views
- Place marking opportunity
- Rest Areas
- Bridges (Proposed carriageways)
- Bridges (Local access road)
- Acoustic barriers
- Fauna bridge
- Fill Batter-Type 1
- Fill Batter-Type 2
- Fill Batter-Type 3
- Cut Batter-Type 1
- Cut Batter-Type 2

Revegetation

- Forest Outcome
- Filtered Landscape Outcome
- Agriculture Outcome
- Construction Zone Outcome
- Water quality control ponds

LA 28

Overall Landscape Strategy plan



Legend

- Refer to page 246 for full legend
- Project corridor and chainages
 - Strong ridgelines
 - Notional ridgelines
 - Initial stage
 - Ultimate stage
 - Waterways
 - Contours at 10m interval
 - National Parks, State Forests, Nature Reserves, Conservation Areas
 - Existing roads

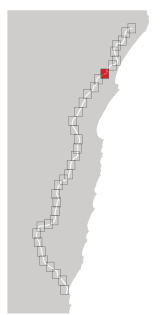
Landscape Strategy

- Open views
- Filtered views
- Place marking opportunity
- Rest Areas
- Bridges (Proposed carriageways)
- Bridges (Local access road)
- Acoustic barriers
- Fauna bridge
- Fill Batter-Type 1
- Fill Batter-Type 2
- Fill Batter-Type 3
- Cut Batter-Type 1
- Cut Batter-Type 2

Revegetation

- Forest Outcome
- Filtered Landscape Outcome
- Agriculture Outcome
- Construction Zone Outcome
- Water quality control ponds

LA 29



Overall Landscape Strategy plan