

Legend

Refer to page 246 for full legend

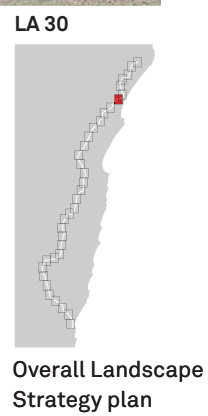
- Project corridor and chainages
- Strong ridgelines
- Notional ridgelines
- Initial stage
- Ultimate stage
- Waterways
- Contours at 10m interval
- National Parks, State Forests, Nature Reserves, Conservation Areas
- Existing roads

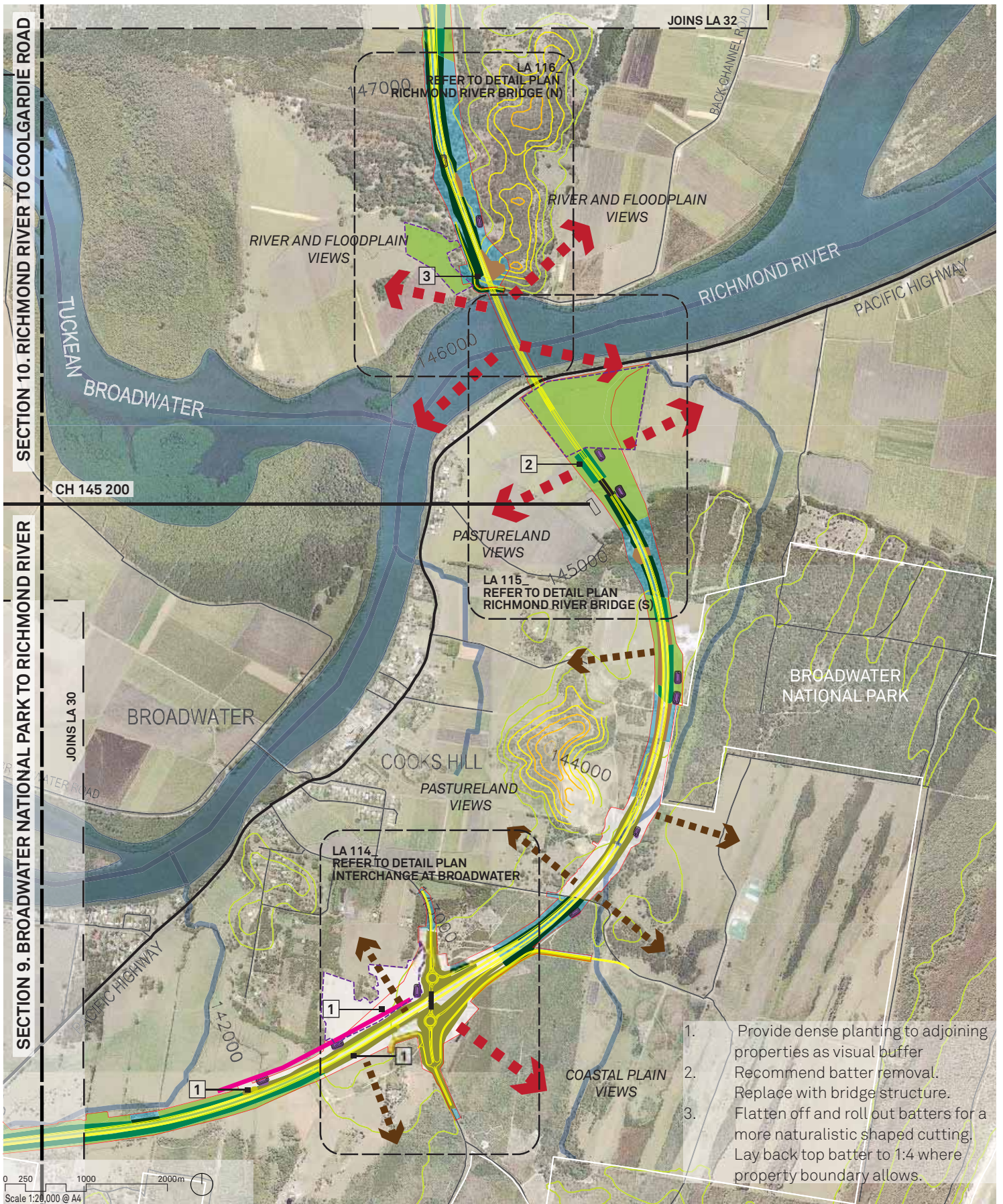
Landscape Strategy

- Open views
- Filtered views
- Place marking opportunity
- Rest Areas
- Bridges (Proposed carriageways)
- Bridges (Local access road)
- Acoustic barriers
- Fauna bridge
- Fill Batter-Type 1
- Fill Batter-Type 2
- Fill Batter-Type 3
- Cut Batter-Type 1
- Cut Batter-Type 2

Revegetation

- Forest Outcome
- Filtered Landscape Outcome
- Agriculture Outcome
- Construction Zone Outcome
- Water quality control ponds





1. Provide dense planting to adjoining properties as visual buffer
2. Recommend batter removal. Replace with bridge structure.
3. Flatten off and roll out batters for a more naturalistic shaped cutting. Lay back top batter to 1:4 where property boundary allows.

Legend

- Refer to page 246 for full legend
- Project corridor and chainages
 - Strong ridgelines
 - Notional ridgelines
 - Initial stage
 - Ultimate stage
 - Waterways
 - Contours at 10m interval
 - National Parks, State Forests, Nature Reserves, Conservation Areas
 - Existing roads

Landscape Strategy

- Open views
- Filtered views
- Place marking opportunity
- Rest Areas
- Bridges (Proposed carriageways)
- Bridges (Local access road)
- Acoustic barriers
- Fauna bridge
- Fill Batter-Type 1
- Fill Batter-Type 2
- Fill Batter-Type 3
- Cut Batter-Type 1
- Cut Batter-Type 2

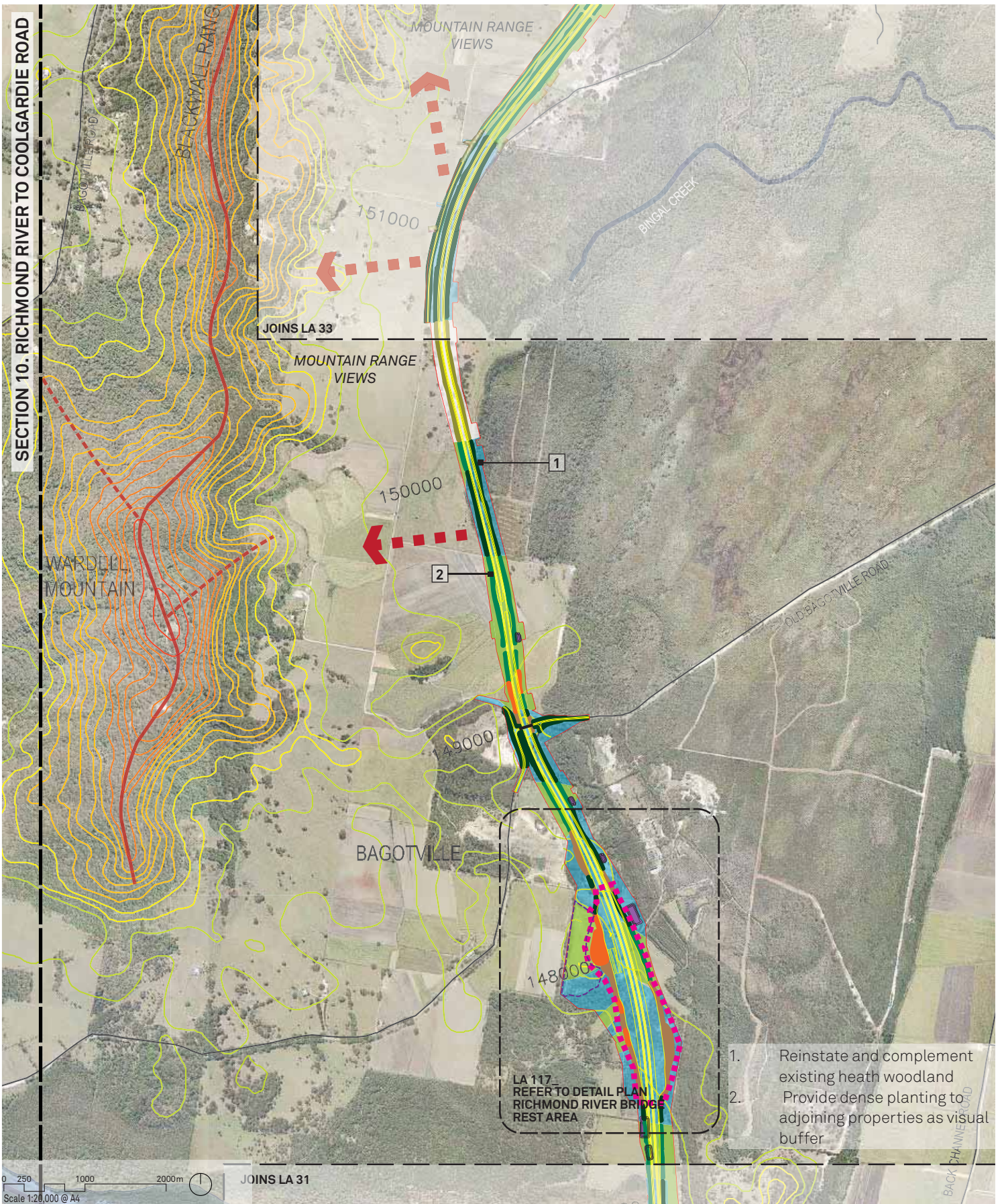
Revegetation

- Forest Outcome
- Filtered Landscape Outcome
- Agriculture Outcome
- Construction Zone Outcome
- Water quality control ponds

LA 31



Overall Landscape Strategy plan



1. Reinstatement and complement existing heath woodland
2. Provide dense planting to adjoining properties as visual buffer

Legend

- Refer to page 246 for full legend
- Project corridor and chainages
 - Strong ridgelines
 - Notional ridgelines
 - Initial stage
 - Ultimate stage
 - Waterways
 - Contours at 10m interval
 - National Parks, State Forests, Nature Reserves, Conservation Areas
 - Existing roads

Landscape Strategy

- Open views
- Filtered views
- Place marking opportunity
- Rest Areas
- Bridges (Proposed carriageways)
- Bridges (Local access road)

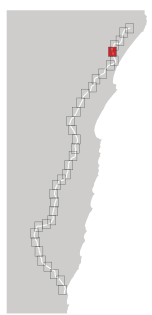
Revegetation

- Acoustic barriers
- Fauna bridge
- Fill Batter-Type 1
- Fill Batter-Type 2
- Fill Batter-Type 3
- Cut Batter-Type 1
- Cut Batter-Type 2

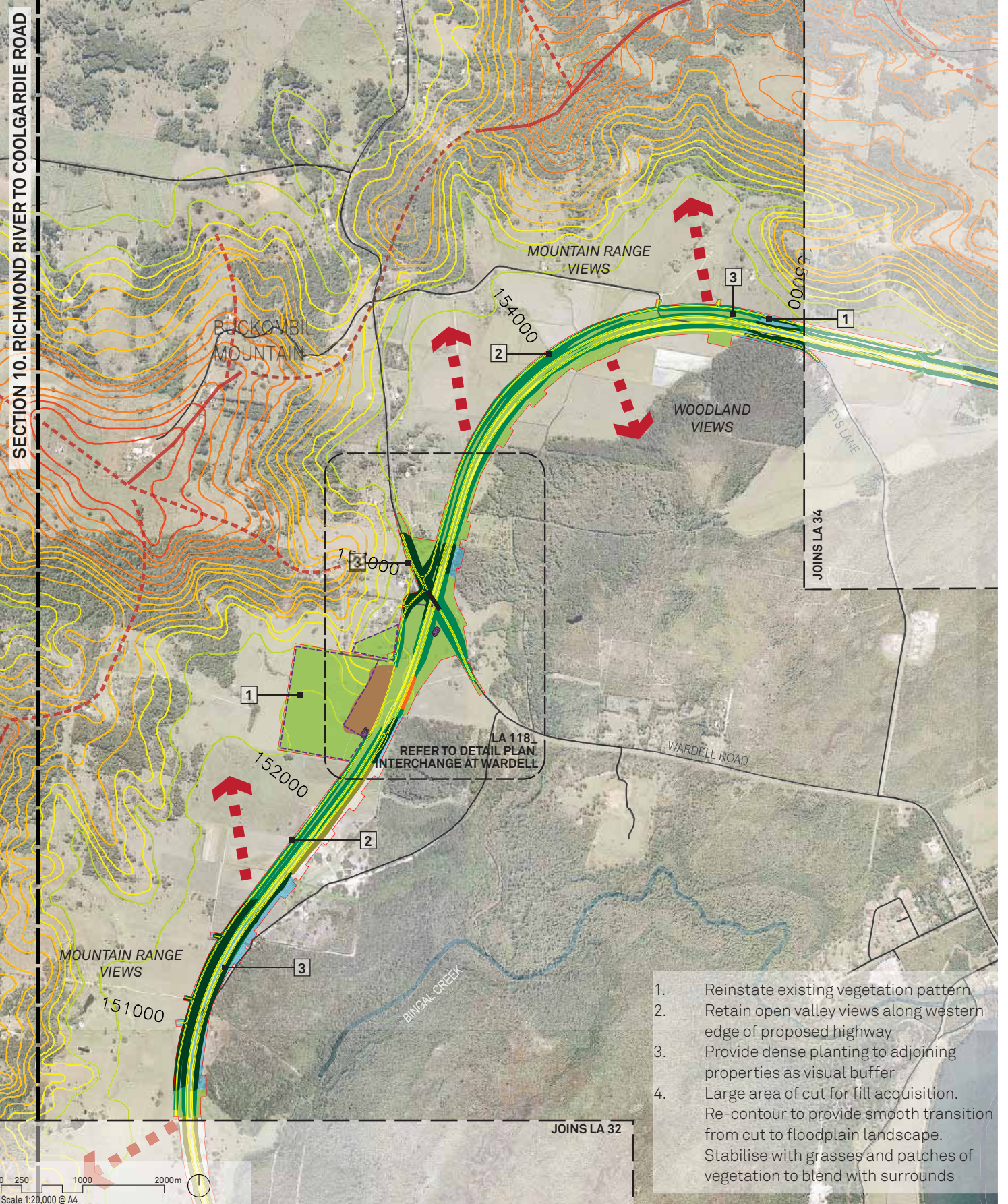
Revegetation Outcomes

- Forest Outcome
- Filtered Landscape Outcome
- Agriculture Outcome
- Construction Zone Outcome
- Water quality control ponds

LA 32



Overall Landscape Strategy plan



1. Reinststate existing vegetation pattern
2. Retain open valley views along western edge of proposed highway
3. Provide dense planting to adjoining properties as visual buffer
4. Large area of cut for fill acquisition. Re-contour to provide smooth transition from cut to floodplain landscape. Stabilise with grasses and patches of vegetation to blend with surrounds

Legend
Refer to page 246 for full legend

- Project corridor and chainages
- Strong ridgelines
- Notional ridgelines
- Initial stage
- Ultimate stage
- Waterways
- Contours at 10m interval
- National Parks, State Forests, Nature Reserves, Conservation Areas
- Existing roads

Landscape Strategy

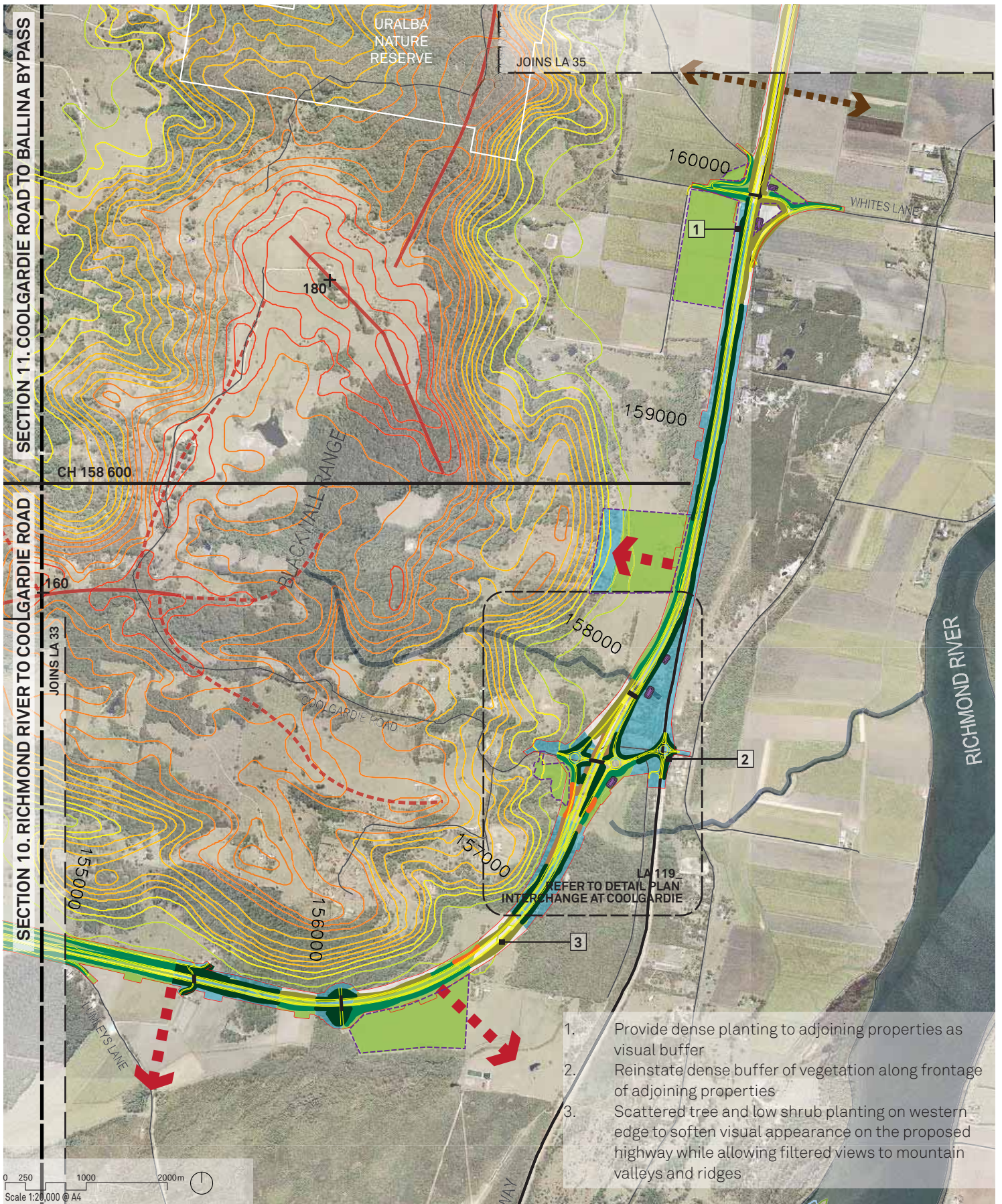
- Open views
- Filtered views
- Place marking opportunity
- Rest Areas
- Bridges (Proposed carriageways)
- Bridges (Local access road)
- Acoustic barriers
- Fauna bridge
- Fill Batter-Type 1
- Fill Batter-Type 2
- Fill Batter-Type 3
- Cut Batter-Type 1
- Cut Batter-Type 2

Revegetation

- Forest Outcome
- Filtered Landscape Outcome
- Agriculture Outcome
- Construction Zone Outcome
- Water quality control ponds

LA 33

Overall Landscape Strategy plan



1. Provide dense planting to adjoining properties as visual buffer
2. Reinstall dense buffer of vegetation along frontage of adjoining properties
3. Scattered tree and low shrub planting on western edge to soften visual appearance on the proposed highway while allowing filtered views to mountain valleys and ridges

Legend

- Refer to page 246 for full legend
- Project corridor and chainages
 - Strong ridgelines
 - Notional ridgelines
 - Initial stage
 - Ultimate stage
 - Waterways
 - Contours at 10m interval
 - National Parks, State Forests, Nature Reserves, Conservation Areas
 - Existing roads

Landscape Strategy

- Open views
- Filtered views
- Place marking opportunity
- Rest Areas
- Bridges (Proposed carriageways)
- Bridges (Local access road)

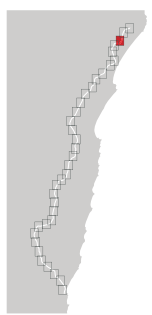
Revegetation

- Acoustic barriers
- Fauna bridge
- Fill Batter-Type 1
- Fill Batter-Type 2
- Fill Batter-Type 3
- Cut Batter-Type 1
- Cut Batter-Type 2

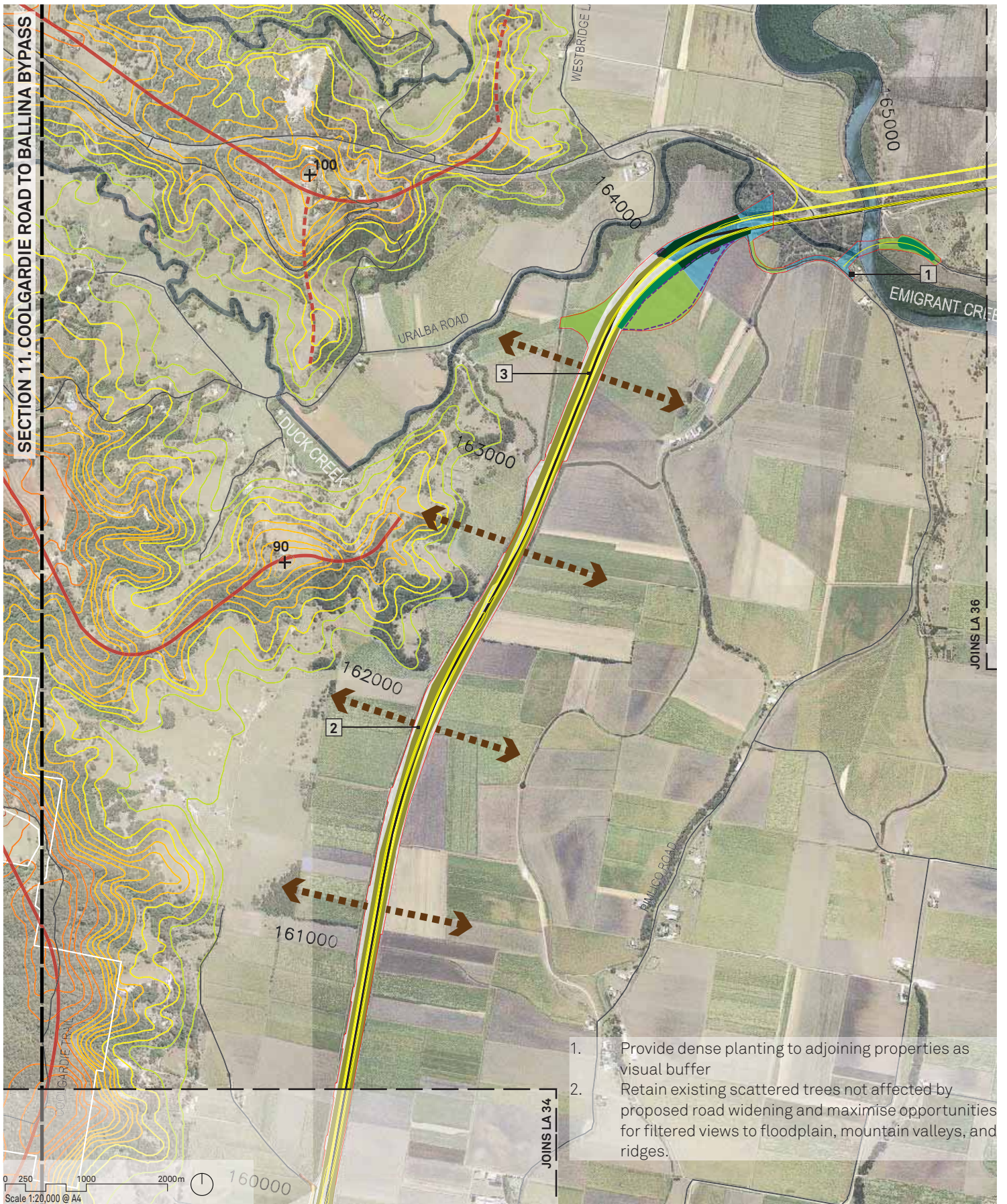
Revegetation Outcomes

- Forest Outcome
- Filtered Landscape Outcome
- Agriculture Outcome
- Construction Zone Outcome
- Water quality control ponds

LA 34



Overall Landscape Strategy plan



1. Provide dense planting to adjoining properties as visual buffer
2. Retain existing scattered trees not affected by proposed road widening and maximise opportunities for filtered views to floodplain, mountain valleys, and ridges.

Legend

Refer to page 246 for full legend

- Project corridor and chainages
- Strong ridgelines
- Notional ridgelines
- Initial stage
- Ultimate stage
- Waterways
- Contours at 10m interval
- National Parks, State Forests, Nature Reserves, Conservation Areas
- Existing roads

Landscape Strategy

- Open views
- Filtered views
- Place marking opportunity
- Rest Areas
- Bridges (Proposed carriageways)
- Bridges (Local access road)
- Acoustic barriers
- Fauna bridge
- Fill Batter-Type 1
- Fill Batter-Type 2
- Fill Batter-Type 3
- Cut Batter-Type 1
- Cut Batter-Type 2

Revegetation

- Forest Outcome
- Filtered Landscape Outcome
- Agriculture Outcome
- Construction Zone Outcome
- Water quality control ponds

LA 35

Overall Landscape Strategy plan

This page is intentionally left blank