

June 2018

## **Temporary traffic changes on Woodburn Evans Head Road for the Woolgoolga to Ballina Pacific Highway upgrade**

**The Australian and NSW governments are jointly funding the Woolgoolga to Ballina Pacific Highway upgrade. Roads and Maritime Services' Pacific Highway Project Office, Pacific Complete and its contractor partners are working together to deliver the upgrade.**

As part of the project, a bridge will be built over the Pacific Highway upgrade for the Woodburn Evans Head Road overpass. The overpass bridge will take about 10 months to complete, weather permitting.

The first stage of this work involves temporarily realigning Woodburn Evans Head Road about 40 metres to the south of the existing road to allow earthwork to start. We have provided a map to show the location of the temporary road and the current haulage route. Earthwork activities will include:

- Excavating, placing and compacting material either side of the new Pacific Highway alignment
- Temporarily realigning Woodburn Evans Head Road and installing temporary safety barriers and signage
- Building piling pads for the bridge abutment construction.

Once earthwork is complete, bridge building will start. Activities will include:

- Driving piles into the ground using a combination of cranes, piling rigs and vibrating hammers
- Pouring concrete for the piles
- Finishing the pile caps including using jack hammering
- Delivering and installing bridge beams and girders
- Building piers (upright supports for the bridge) and headstocks (which sit on top of the piers)
- Installing precast girders and pouring concrete bridge decks
- Earthwork and pavement work for the bridge and the connections to the existing road
- Finishing work, including signage, line marking and landscaping.

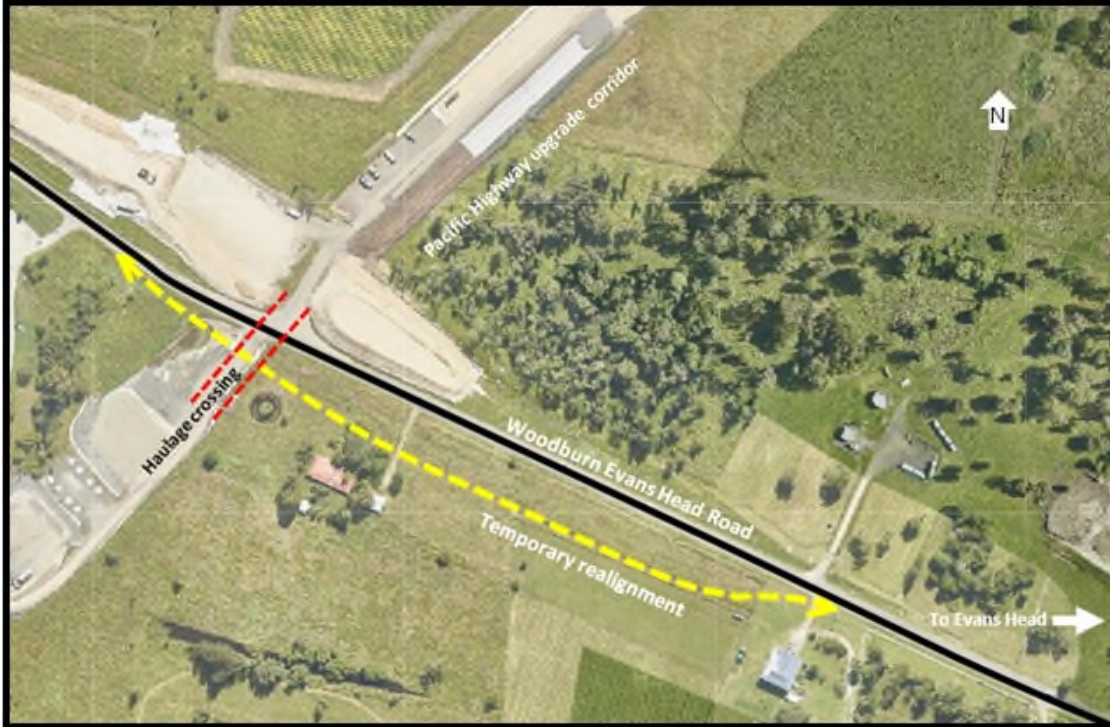
### **How will this work affect you?**

The project team will continue to haul material across Woodburn Evans Head Road and along the project alignment. Temporary traffic delays of up to two minutes in both directions will occur, when required, to allow trucks and machinery to cross safely.

Our work will be noisy at times and may cause some disturbance. Piling, in particular driven piling, can create increased noise and vibration levels as a result of hammering activity. It is likely you will be able to hear these activities if they are near your property. We will carry out noise monitoring throughout this work. We will also carry out noise mitigation to minimise the impact of our work.

---

## Temporary realignment of Woodburn Evans Head Road



### Work hours

Typically, work will be carried out during the project's approved construction hours, which are:



7am – 6pm Monday – Friday  
8am – 5pm Saturdays

Nearby residents will be notified at least five working days in advance of any activities scheduled outside of these working hours.

### Traffic management

There will be some temporary traffic changes while this work is carried out. Reduced speed limits and lane closures may be in place and may affect travel times. Please keep to speed limits and follow the direction of traffic controllers and signs. For the latest traffic updates call 132 701, visit [livetraffic.com](http://livetraffic.com) or download the Live Traffic NSW App.

### For more information

For more information about the work please contact the project team, toll free on 1800 778 900, email [W2B@pacificcomplete.com.au](mailto:W2B@pacificcomplete.com.au) or visit the project website at [rms.nsw.gov.au/W2B](http://rms.nsw.gov.au/W2B).

We apologise for any inconvenience and thank you for your patience during this important work.



If you need help understanding this information, please contact the Translating and Interpreting Service on 131 450 and ask them to call us on 1800 778 900.