

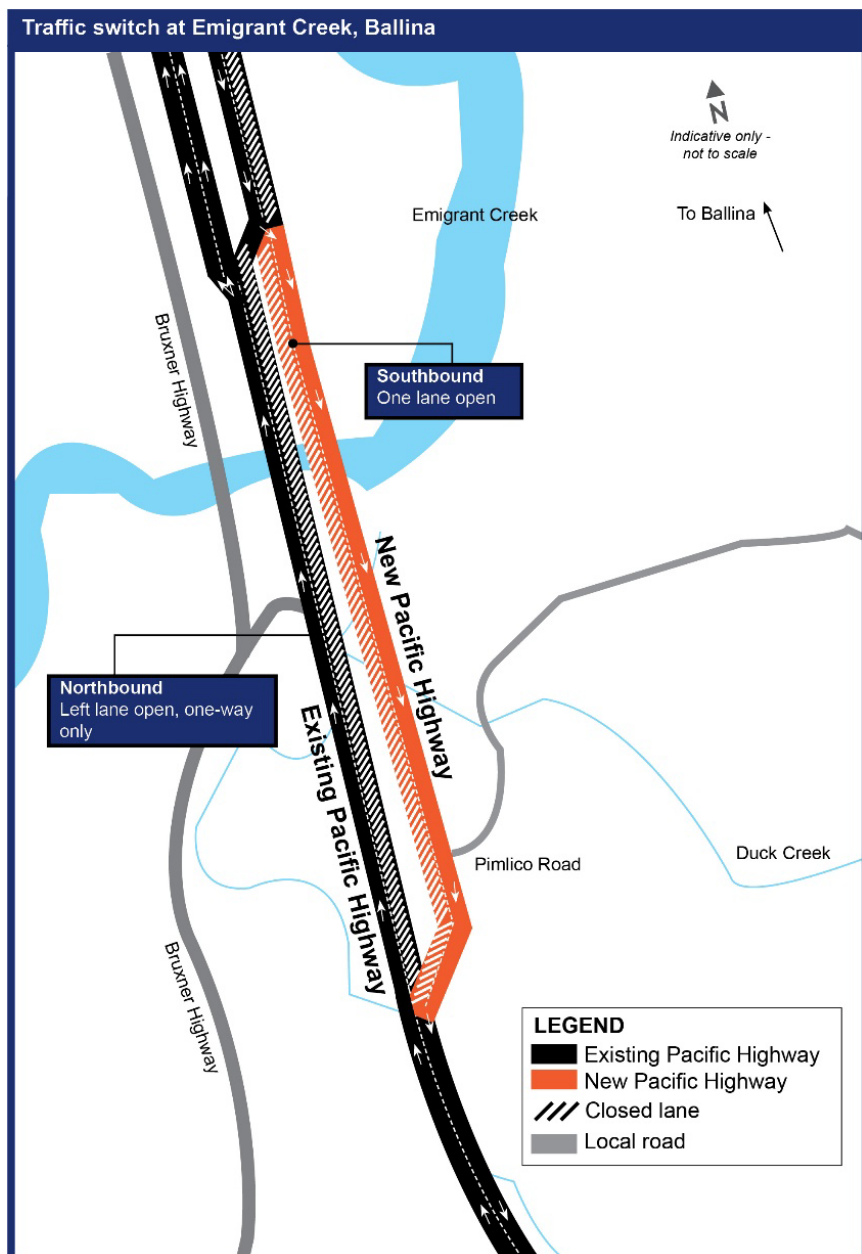


## Permanent traffic change on the Pacific Highway, Ballina

Roads and Maritime Services, Pacific Complete and its contractor partners are working together to deliver the Woolgoolga to Ballina Pacific Highway upgrade.

As part of building the highway upgrade, traffic changes will be carried out on the Pacific Highway in mid-June, weather permitting.

The changes will involve southbound motorists travelling on one lane of new road and bridges over Emigrant and Duck creeks. Local road access to Pimlico Road will remain left in and out only.



These traffic changes will allow us to maintain traffic flow on the road network while we safely continue to build the upgrade and will remain in place as drainage and finishing work are carried out. Motorists will be kept informed about dates for the traffic changes through electronic message signs and on [livetraffic.com.au](http://livetraffic.com.au).

## How we manage our work

The project team will use machinery that generates noise, light and vibration. To manage this work we will:

- turn-off machinery when not in use
- direct temporary lighting down and away from homes
- monitor noise so we can manage any potential impacts and adjust our work, as required

All work will be carried out in line with the project's Conditions of Approval and Construction Environmental Management Plan.

## Work hours

Typically work will be carried out during the project's approved construction hours, which are:

Approved construction hours	
Monday to Friday 7am–6pm	
Saturday 8am–5pm	

In areas where residents live more than 200 metres from the work, extended work hours are allowed between 6am and 7am and 6pm and 7pm from Monday to Friday. No work will be carried on Sunday or a public holiday.

## Work outside of approved construction hours

To complete the traffic change, work is required outside approved construction hours for technical reasons. This work is planned from Tuesday 11 June for three nights between 8pm and 7am, weather permitting.

Building next to, over and on existing roads, means traffic may be stopped or reduced to one lane while work is carried out. By working at night, delays are minimised and journey times for motorists are less affected.

## Traffic changes

To manage queuing and safety, there will be some temporary traffic changes and lane closures that may affect travel times. Please keep to speed limits and follow the direction of traffic controllers and signs. Motorists are encouraged to remember PAC – Plan, Awareness, Caution. For the latest traffic updates, you can call 132 701, visit [livetraffic.com](http://livetraffic.com) or download the Live Traffic NSW app.

We apologise for any inconvenience and thank you for your patience during this important work.

### Subscribe now

We can keep you up to date about what's happening in your area or if you are interested in a specific topic. Register your interest:

 1800 778 900 (toll free)

 [W2B@pacificcomplete.com.au](mailto:W2B@pacificcomplete.com.au)

### For more information

 1800 778 900 (toll free)

 [W2B@pacificcomplete.com.au](mailto:W2B@pacificcomplete.com.au)

 [pacifichighway.nsw.gov.au](http://pacifichighway.nsw.gov.au)

 Follow NSW Roads

If you need help understanding this information, please contact the Translating and Interpreting Service on 131 450 and ask them to call us on 1800 778 900.



131 450