



Australian Government

BUILDING OUR FUTURE



Woolgoolga to Ballina Pacific Highway upgrade

Project update Glenugie to Ballina – July 2019



Future Coolgardie interchange looking north, May 2019

Roads and Maritime Services, Pacific Complete and its contractor partners are working together to deliver the Woolgoolga to Ballina Pacific Highway upgrade.

IN THIS UPDATE

- opening the new highway
- urban design and landscaping
- design refinements update
- get familiar with the new highway
- design process summary



Safer and more reliable journeys



Faster travel times



Improved flood immunity

Opening the new highway

The Woolgoolga to Ballina upgrade is moving closer to completion and you will start to see the new road opening in stages.

We will continue to open sections of single carriageway to two-way traffic during 2019. We expect to open the first sections of dual carriageway between Glenugie and Ballina by the end of 2019. The remaining sections will open progressively in 2020.

In this update we've provided an overview of the tools and information available to help explain the changes including, key locations along the route as well as interchanges and major bridges.



Almost four kilometres of new single carriageway open to two-way traffic between Maclean and Yamba

Urban design and landscaping

The urban design and landscape plans for the upgrade between Glenugie and Ballina have been finalised and approved by the Department of Planning and Environment. Community feedback from 2016 has been considered.

Thank you to everyone who took time to review the plans and provide feedback.

Design refinements update

The proposed design refinements for the upgrade between Glenugie and Ballina have been finalised. These refinements included changes to wildlife connectivity measures, pedestrian and cyclist facilities, flood mitigation and drainage, local road access and other design elements.

Thank you to everyone who took time to provide feedback about the proposed refinements. Community feedback from 2016 has been considered in finalising the proposed refinements and are outlined in a consultation summary report available to view at pacifichighway.nsw.gov.au.



New sections of single carriageway opening during 2019



Dual carriageway to be completed in 2020



25 minute travel time savings once complete



Review in place to reduce traffic noise levels



New Bostock Road overpass bridge, Tucabia

Get familiar with the new highway

Information and tools available on our website at pacifichighway.nsw.gov.au include:

- online collaborative map
- frequently asked questions
- project document library
- new overview map
- detailed interchange maps.

Project document library

All the reports, plans and strategies for the Woolgoolga to Ballina upgrade are available to view and download in the document library on our website at pacifichighway.nsw.gov.au/documentlibrary.

Here you can find extensive information about key features of the project.

- **Operational noise** – An operational noise review has been prepared which outlines the predicted road traffic noise levels from the upgrade and measures to reduce these impacts.
- **Flood management** – Potential impacts to properties, access, infrastructure and proposed mitigation measures are considered in hydrological mitigation reports for the major floodplains of the Clarence and Richmond rivers.
- **Directional signs** – A directional signage plan has been prepared which shows the location and wording of tourist, service and guide signs.
- **Service centres** – Roads and Maritime's highway service centre policy outlines potential sites along the Pacific Highway.
- **Wildlife connectivity** – The types and locations of connectivity structures are outlined in the project's fauna connectivity strategy.

If you have any questions or if you're not sure where to find what you're looking for, you can contact the project team on 1800 778 900 (dial 1) or email w2b@pacificcomplete.com.au.



Looking north-west at the new bridge over Richmond River at Broadwater

Use the online collaborative map



Our online collaborative mapping tool has been updated to show the design features between Glenugie and Ballina. Depending on what you would like to see, you can zoom in to an area and turn on layers like:

- the new highway
- interchanges
- U-turn facilities
- emergency stopping bays
- rest areas
- pedestrian and cyclist access
- bridges
- wildlife connectivity structures.

Did you know?

The orange cars shown at key locations of the collaborative map, link to extra information like artist impressions, 3D models, 360 degree videos or detailed interchange maps.

Design process summary

The concept design for the Woolgoolga to Ballina upgrade was first developed more than ten years ago. Since then, the design has been refined to deliver a balance of engineering, safety, environment and community outcomes.

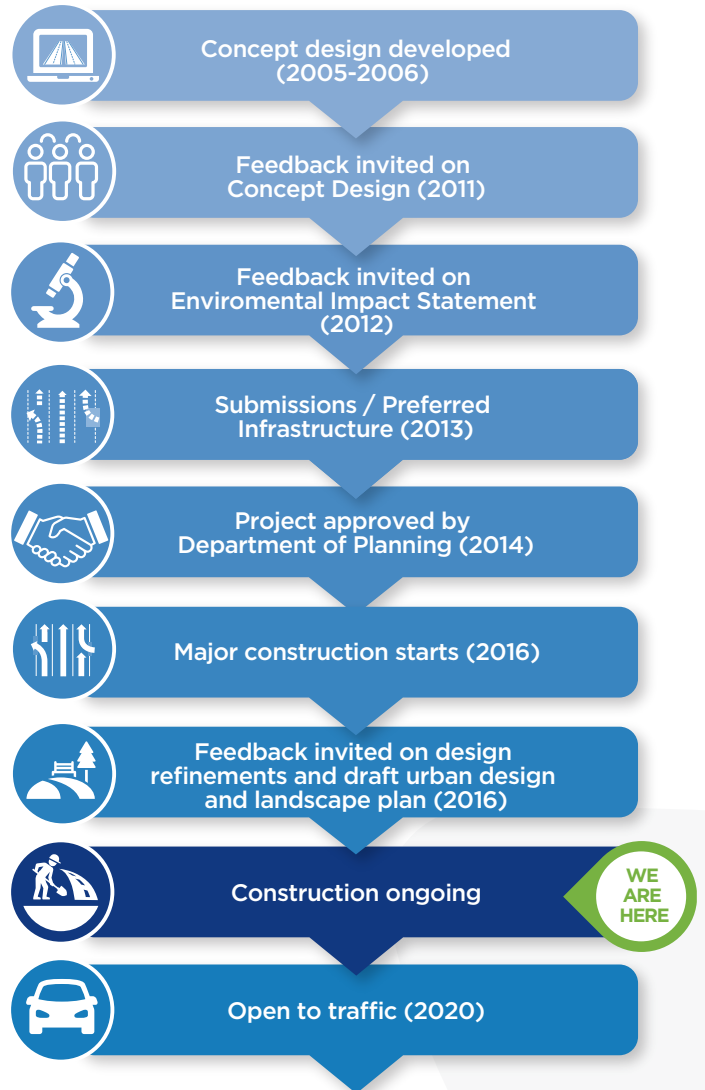
Through the design process, Roads and Maritime has:

- considered community feedback provided throughout the development of the project
- ensured the design is consistent with the criteria and principles in the project's Environmental Impact Statement
- ensured the project's approval conditions have been met.

Want to hear more from us?

You can subscribe to email and SMS updates to stay informed about work in your area. To register your details, contact the project team on 1800 778 900 or email w2b@pacificcomplete.com.au.

Don't forget to follow NSW Roads on Facebook and search **#woolgoolga2ballina** to see our latest news and videos.



Contact us:

Have a question or want to chat to someone about the project?


Contact us at any time:

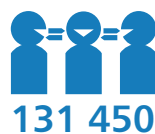
 1800 778 900 (toll free)

 W2B@pacificcomplete.com.au

 pacifichighway.nsw.gov.au

 PO Box 546, Grafton NSW 2460

 Roads and Maritime Services
76 Victoria Street, Grafton NSW 2460



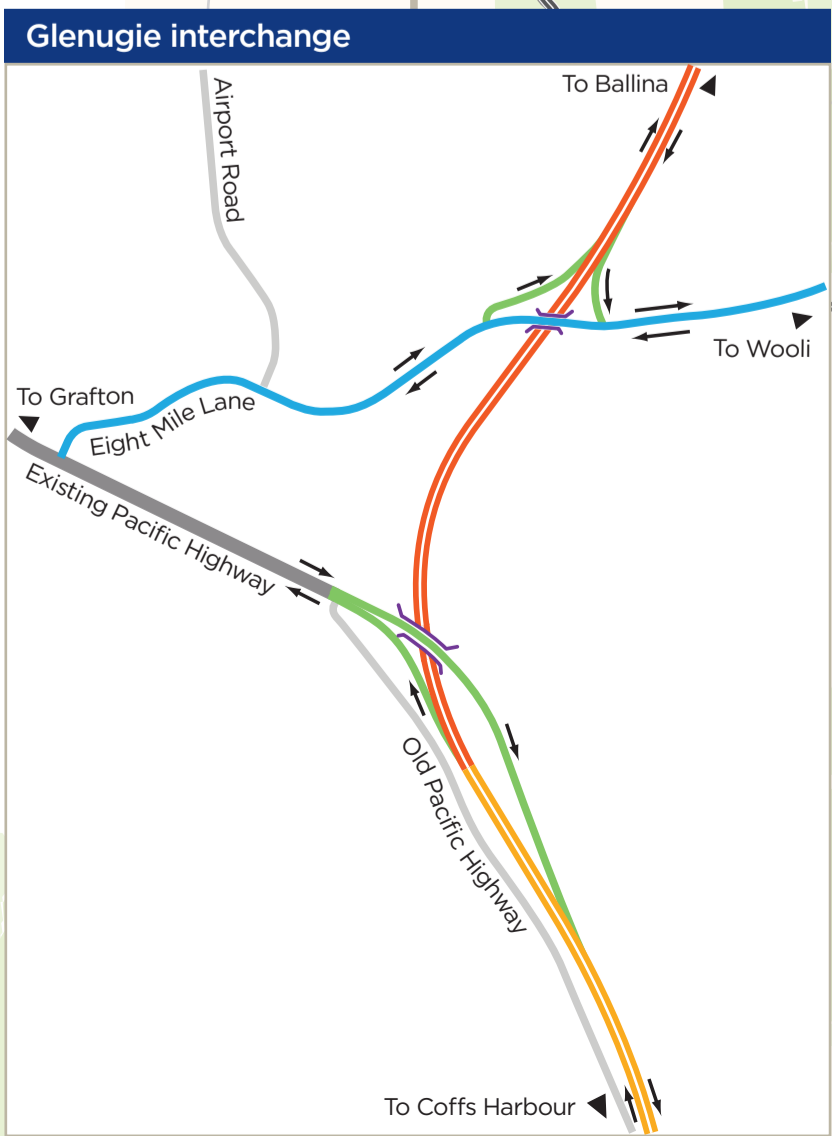
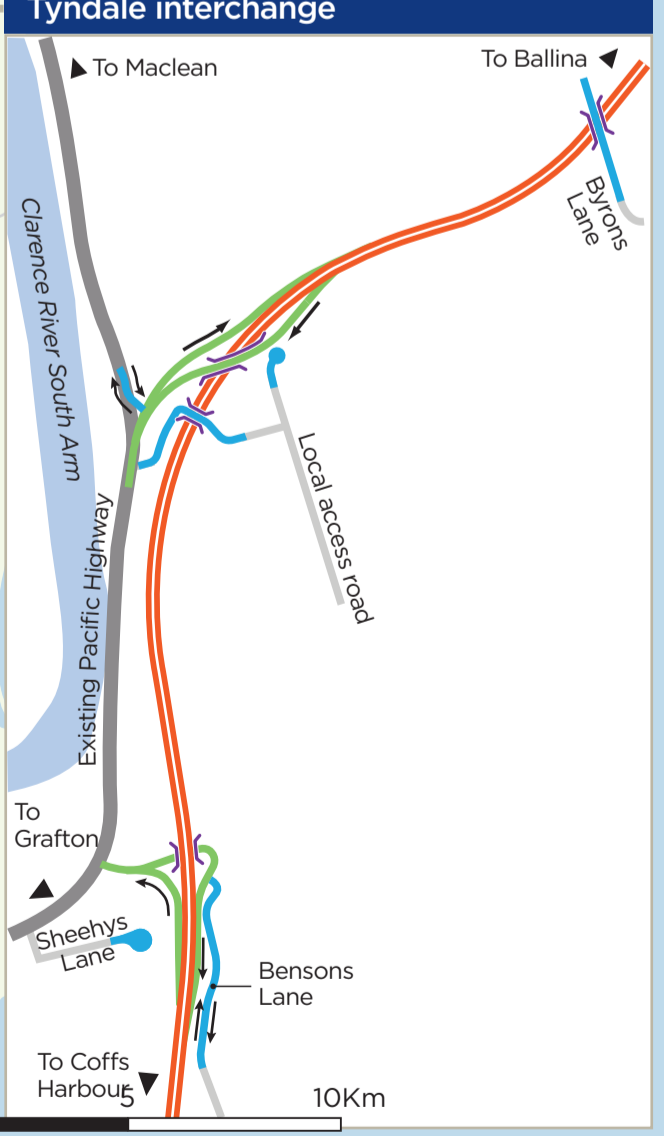
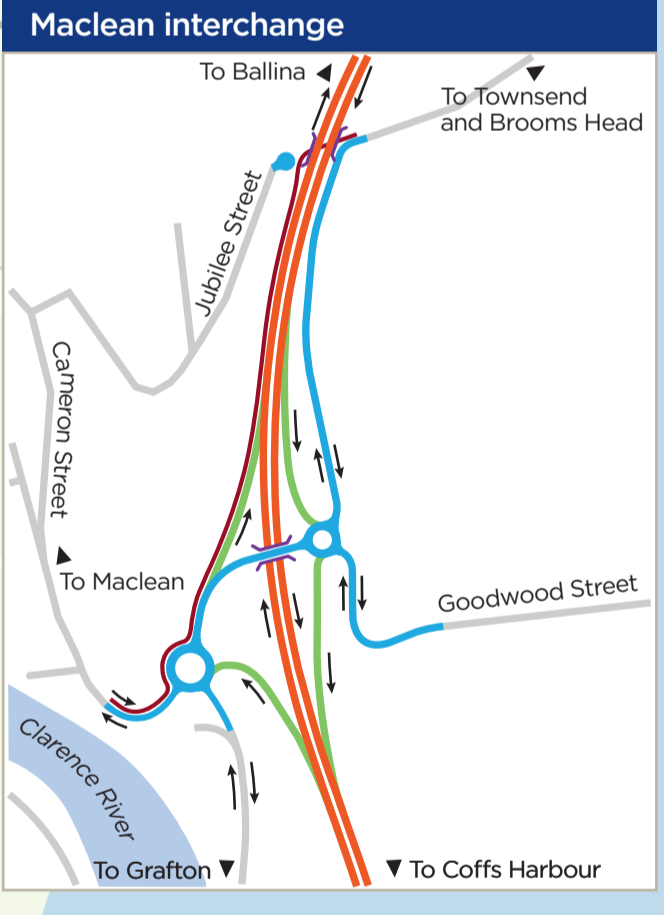
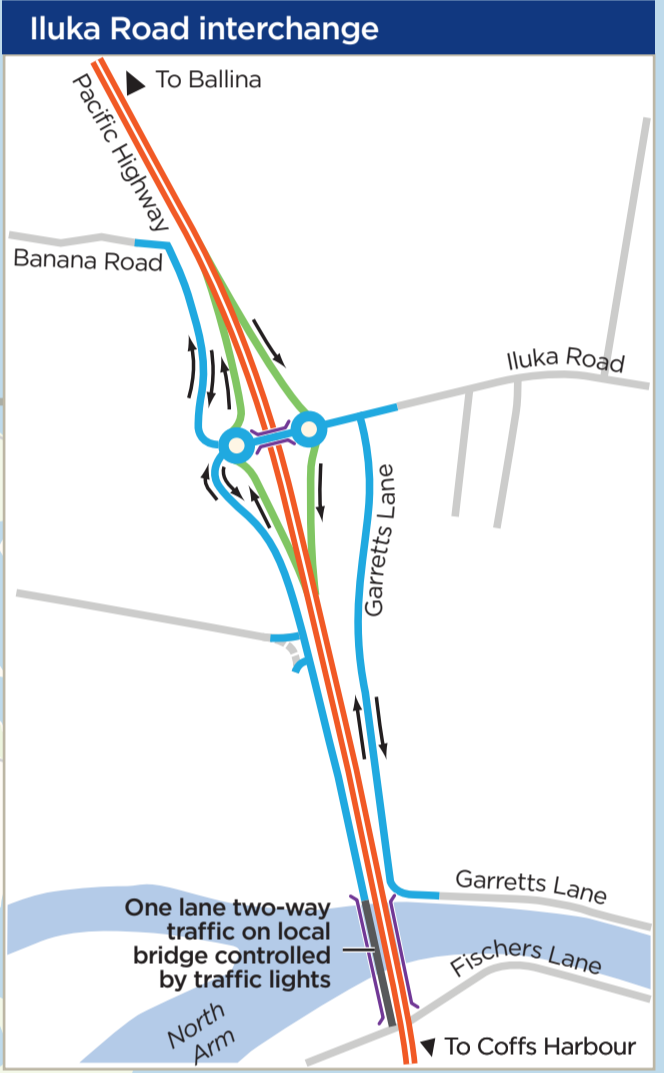
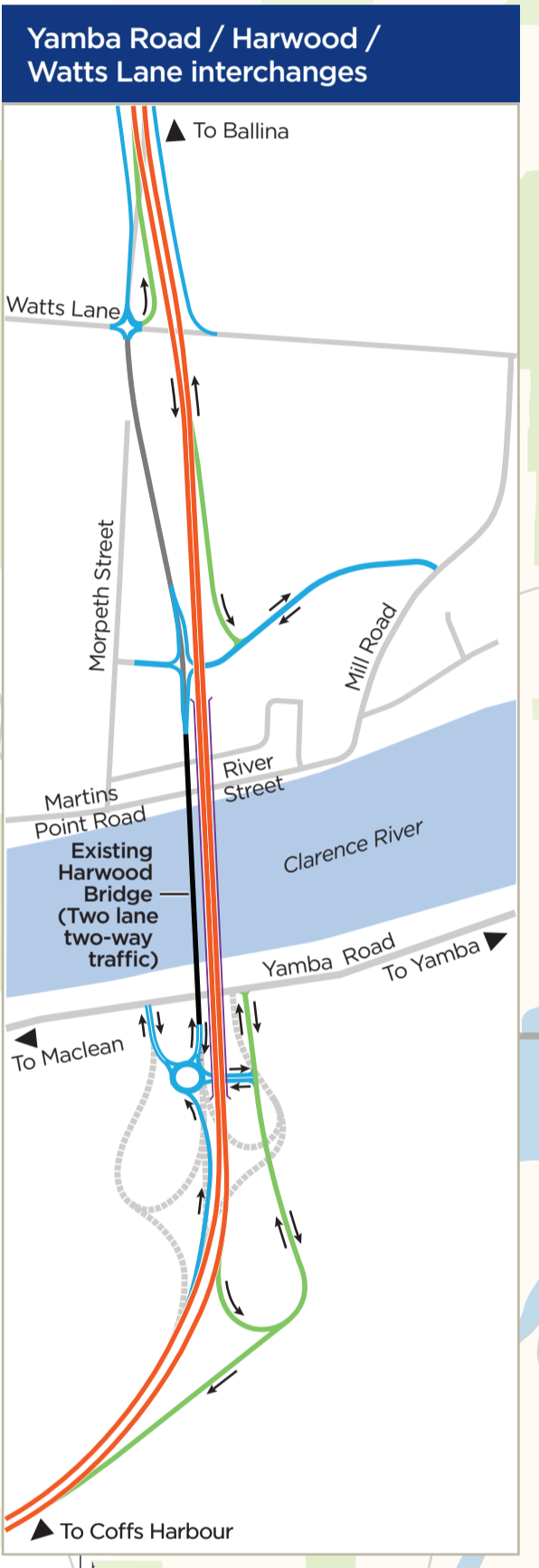
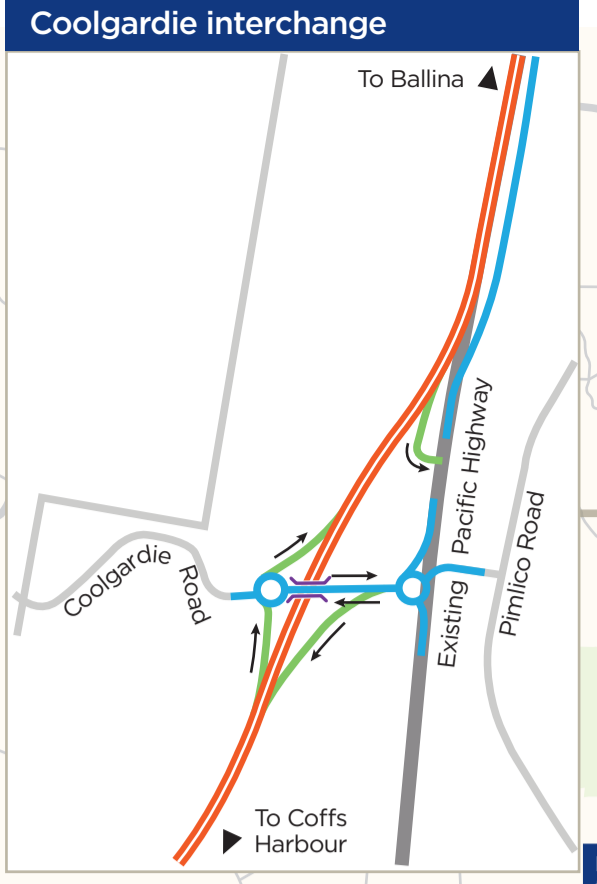
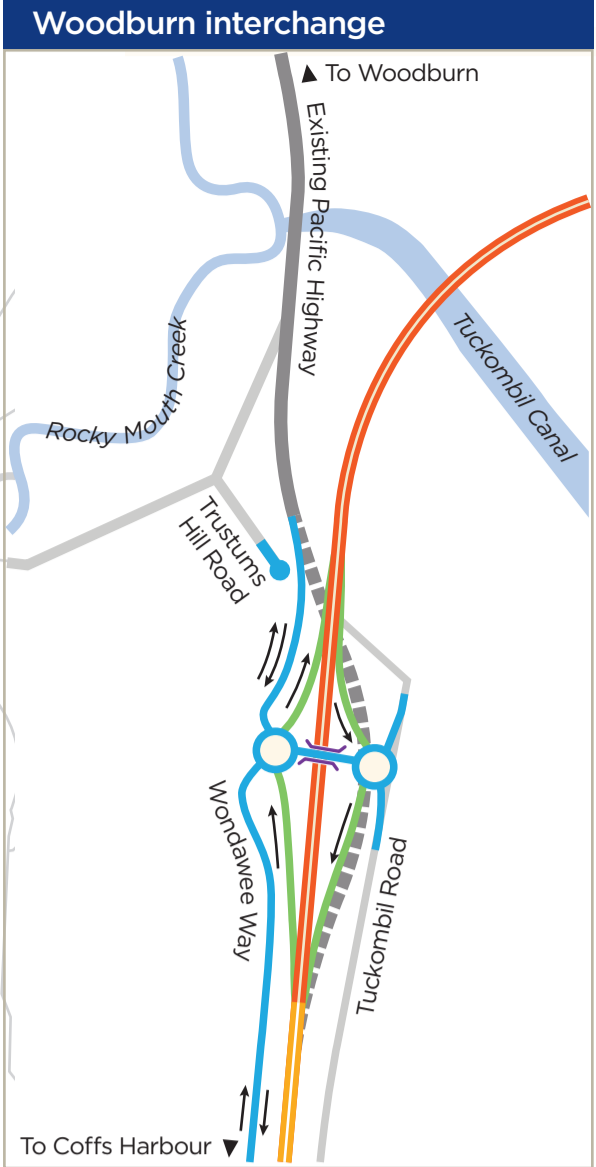
If you need help understanding this information, please contact the Translating and Interpreting Service on **131 450** and ask them to call us on **1800 506 976 (option 3)**

July 2019
RMS. 19.1296



Privacy: Roads and Maritime Services ("RMS") is subject to the *Privacy and Personal Information Protection Act 1998* ("PPIP Act") which requires that we comply with the Information Privacy Principles set out in the PPIP Act. All information in correspondence is collected for the sole purpose of assisting in the assessment of this proposal/ delivering this project. The information received, including names and addresses of respondents, may be published in subsequent documents unless a clear indication is given in the correspondence that all or part of that information is not to be published. Otherwise RMS will only disclose your personal information, without your consent, if authorised by the law. Your personal information will be held by RMS. You have the right to access and correct the information if you believe that it is incorrect.

Woolgoolga to Ballina Pacific Highway upgrade



LEGEND (MAIN MAP)

- Motorway standard (Class M)
- Arterial road standard (Class A)
- Upgraded dual carriageway
- Interchange location
- Rest area
- Existing Pacific Highway
- Other roads
- Town
- National park
- Nature reserve
- State forest
- Conservation area

LEGEND (INSET MAPS)

- Class M
- Class A
- Existing Pacific Highway
- Ramp
- Local access road
- Shared user path
- Bridge
- Other roads
- Roads to be removed

Note: Inset drawings not to scale

