



Australian Government

BUILDING OUR FUTURE



February 2019

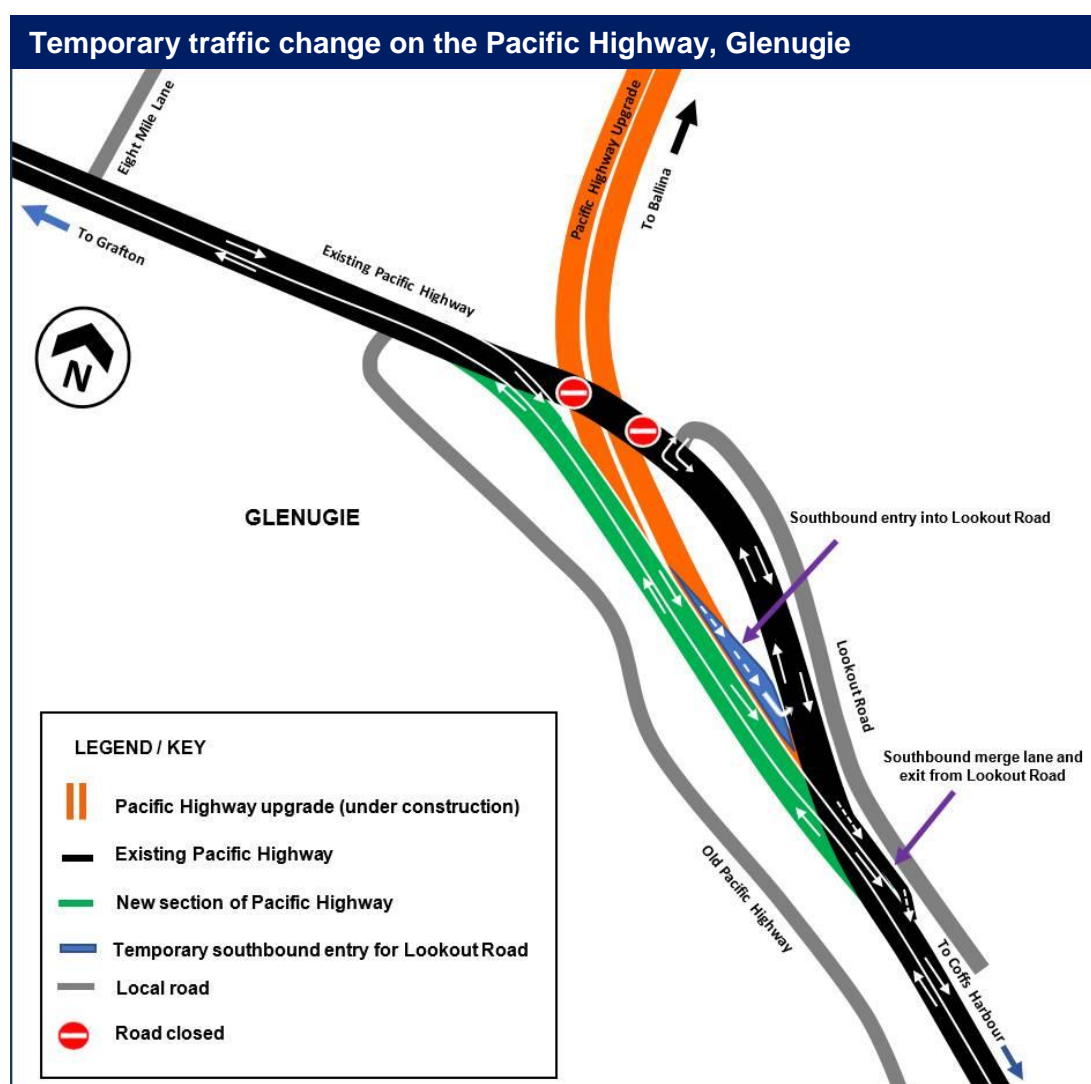
Temporary traffic change on Pacific Highway, Glenugie

Roads and Maritime Services, Pacific Complete and its contractor partners are working together to deliver the Woolgoolga to Ballina Pacific Highway upgrade.

Work on the temporary re-alignment of the Pacific Highway just south of Eight Mile Lane at Glenugie is almost complete. Traffic will be temporarily moved onto the new 1.4 kilometre section of road, west of the existing highway, on Monday 11 February 2019, weather permitting.

As part of this work, the intersection of Lookout Road, Glenugie and the Pacific Highway will be temporarily relocated about 1.4 kilometres south. This traffic change will be in place while we build the permanent access to Lookout Road.

These changes will allow us to maintain traffic flow on the road network while we safely build the Pacific Highway upgrade.



How we manage our work

Machinery that generates noise and vibration will be used. To manage our work, we will:

- locate equipment such as generators as far as possible from residences
- turn off machinery when not in use
- plan activities to minimise noise from reversing vehicles
- monitor noise so we can manage any potential impacts and adjust our work as required

All work will be carried out in line with the project's Conditions of Approval and Construction Environmental Management Plan.

Work hours

Typically work will be carried out during the project's approved construction hours, which are:

Approved construction hours	
Monday to Friday 7am–6pm	
Saturday 8am–5pm	

In areas where residents live more than 200 metres from the work, extended approved work hours are allowed between 6am and 7am and 6pm and 7pm from Monday to Friday. No work will be carried on Sunday or a public holiday.

Work outside of approved construction hours

To complete this temporary traffic change, work is required outside approved construction hours. This work is planned between 6pm and 7am for five nights from Monday 11 February, weather permitting.

Building next to and on existing roads, means traffic may be stopped or reduced to one lane while work is carried out. By working at night, delays are minimised and journey times for motorists are less affected.

Traffic changes

To manage queuing and safety, there will be some temporary traffic changes and lane closures that may affect travel times. Please keep to speed limits and follow the direction of traffic controllers and signs. Motorists are encouraged to remember PAC – Plan, Awareness, Caution. For the latest traffic updates, you can call 132 701, visit livetraffic.com or download the Live Traffic NSW app.

We apologise for any inconvenience and thank you for your patience during this important work.

Subscribe now	For more information
We can keep you up to date about what's happening in your area or if you are interested in a specific topic. Register your interest:	 1800 778 900 (toll free)
 1800 778 900 (toll free)	 W2B@pacificcomplete.com.au
 W2B@pacificcomplete.com.au	 pacifichighway.nsw.gov.au
	 Follow NSW Roads
If you need help understanding this information, please contact the Translating and Interpreting Service on 131 450 and ask them to call us on 1800 778 900.	
 131 450	