



Close of consultation and start of work on a temporary asphalt batch plant at McIntyres Lane, Gulmarrad

Roads and Maritime Services, Pacific Complete and its contractor partners are working together to deliver the Woolgoolga to Ballina Pacific Highway upgrade.

In February 2019, Roads and Maritime invited the community to provide feedback on a proposed temporary asphalt batch plant between Tucabia and Maclean at McIntyres Lane, Gulmarrad.

We received feedback from 22 people and organisations, raising 23 individual comments about six different topics. Thank you to everyone who took time to review the proposal and provide feedback.

Key topics raised by the community included:

- air quality including dust and odour
- noise from batch plant operation and heavy vehicle movements
- potential damage to local roads
- proximity to local community
- condition of McIntyres Lane
- general support for the proposed temporary asphalt batch plant

After considering the community feedback received and mitigation measures to minimise impacts, Roads and Maritime will proceed with the temporary asphalt batch plant at McIntyres Lane, Gulmarrad.

A consultation report has been prepared outlining the feedback received and responses to key topics raised. The report is available to view online at pacifichighway.nsw.gov.au.

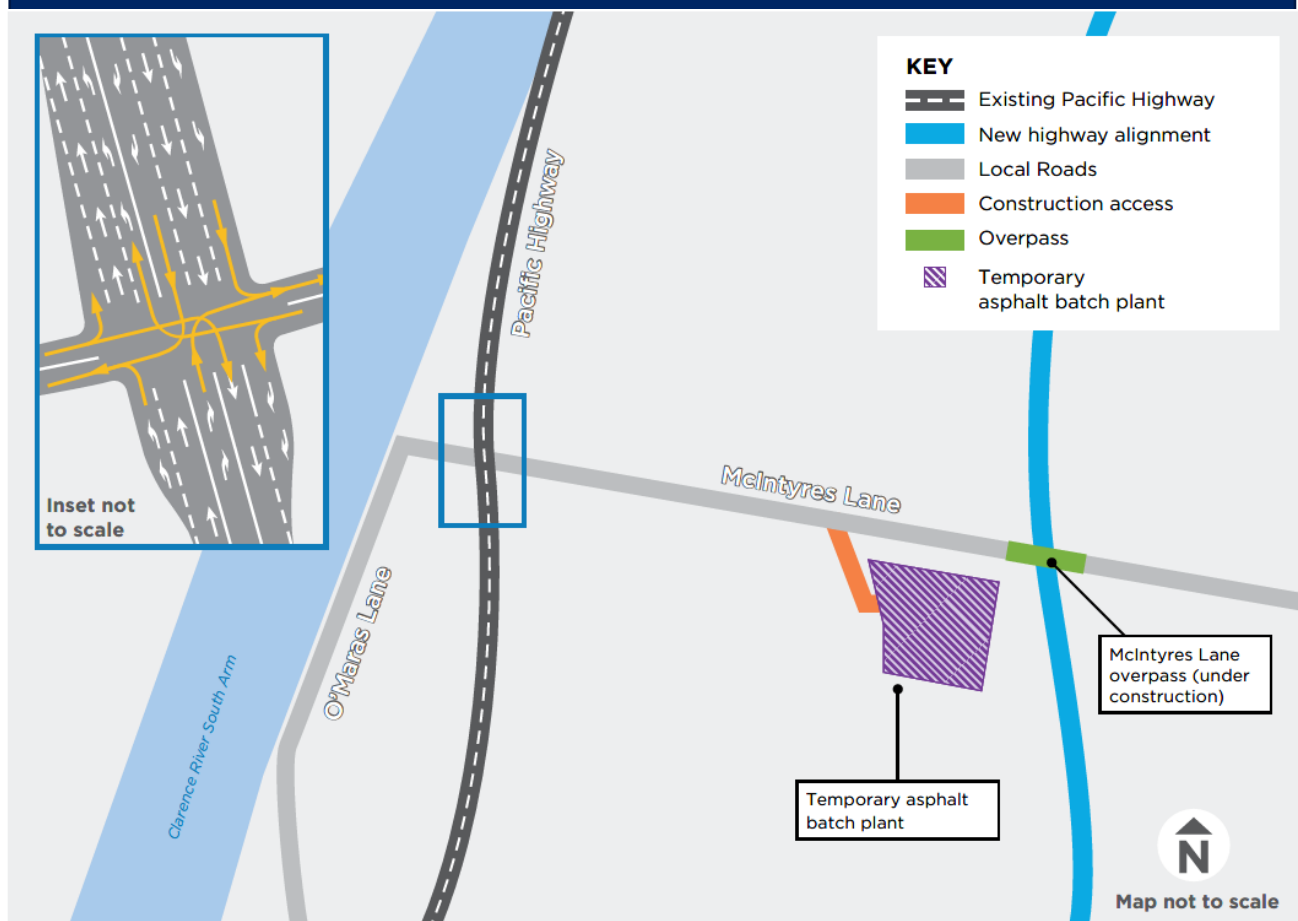
What happens next?

Work to build the temporary asphalt batch plant will start in March, weather permitting. Work will involve:

- installing environment controls including water treatment facilities and air quality gauges
- grading and spray sealing the section of McIntyres Lane between the Pacific Highway and the new overpass bridge
- installing batch plant modules including using a crane to lift the modules into place
- establishing wash down areas, truck parking bays and stockpile areas for storing materials such as sand and gravel

Asphalt will be supplied from the temporary batch plant from about April 2019. The batch plant will remain in use until the end of 2020 and will be removed when work is complete. The site will be restored at the end of the project.

Temporary asphalt batch plant location



How will the work affect you?

During operation of the batch plant, nearby residents can expect:

- light and heavy construction vehicles accessing the batch plant facility via the existing access to the construction compound from the Pacific Highway, including trucks delivering materials
- some noise due to heavy vehicles accessing the facility to unload materials (banging of tailgates)
- some noise due to operating equipment and machinery including conveyor belt alarms and generators
- flashing lights and reversing alarms from machinery and vehicles, for the safety of workers
- trucks being loaded with asphalt and transporting to work areas
- light from the site compound, batch plant sensors and security lighting

How we manage our work

To build and operate the temporary asphalt batch plant, the project team will use machinery that generates noise, light and vibration. To manage this work we will:

- monitor air quality and noise levels to ensure they are within the allowed limits
- minimise emissions by installing and maintaining particulate extraction equipment and maintaining bitumen products at the lowest possible temperature
- ensure that machinery meets industry standards
- monitor and spray water on aggregate stockpiles and haulage routes to minimise dust
- turn off machinery when not in use
- direct temporary lighting down and away from homes

All work will be carried out in line with the project's Conditions of Approval and Construction Environmental Management Plan.

Work hours

Typically work will be carried out during the project's approved construction hours, which are:

Approved construction hours	
Monday to Friday 7am–6pm	
Saturday 8am–5pm	

In areas where residents live more than 200 metres from the work, extended approved work hours are allowed between 6am and 7am and 6pm and 7pm from Monday to Friday. No work will be carried on Sunday or a public holiday.

Some work will be done outside approved construction hours including:

- starting operation early to maximise asphalt production
- carrying out deliveries to and from the temporary asphalt batch plant
- maintenance of plant and equipment
- supplying asphalt during night work, such as traffic changes

This work will be carried out as required. Impacted residents will be notified before work outside approved construction hours starts.

McIntyres Lane overpass bridge opening delayed

The opening of McIntyres Lane overpass bridge has been delayed and will be opened soon. We will continue to keep the community informed of traffic changes in this area.

Traffic changes

Please keep to speed limits and follow the direction of traffic controllers and signs. Motorists are encouraged to remember PAC – Plan, Awareness, Caution. For the latest traffic updates, you can call 132 701, visit livetraffic.com or download the Live Traffic NSW app.

We apologise for any inconvenience and thank you for your patience during this important work.

Subscribe now	For more information
<p>We can keep you up to date about what's happening in your area or if you are interested in a specific topic. Register your interest:</p> <p> 1800 778 900 (toll free)</p> <p> W2B@pacificcomplete.com.au</p>	<p> 1800 778 900 (toll free)</p> <p> W2B@pacificcomplete.com.au</p> <p> pacifichighway.nsw.gov.au</p> <p> Follow NSW Roads</p>
<p>If you need help understanding this information, please contact the Translating and Interpreting Service on 131 450 and ask them to call us on 1800 778 900.</p>	

