

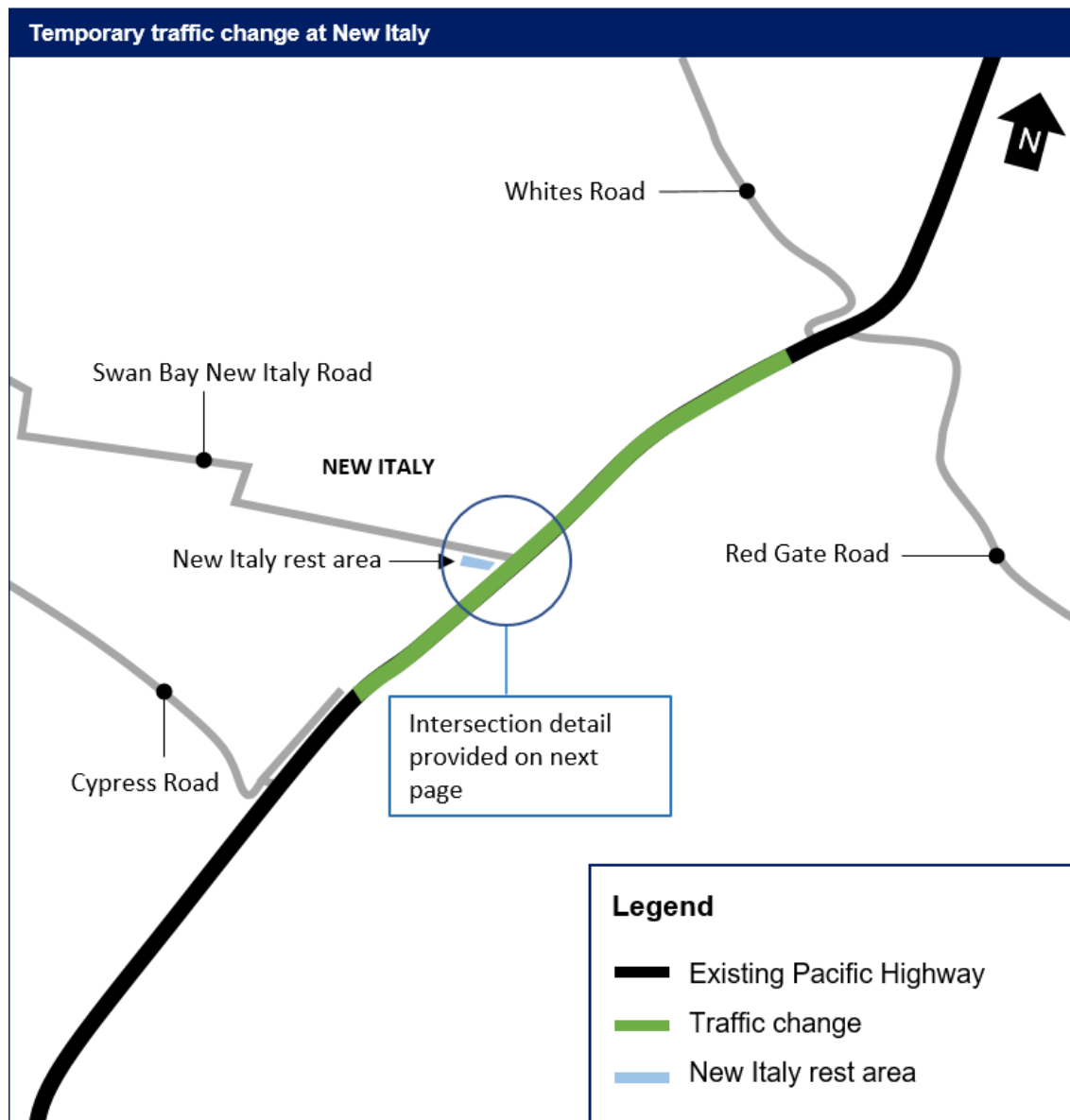


Temporary traffic change on the Pacific Highway, New Italy

Roads and Maritime Services, Pacific Complete and its contractor partners are working together to deliver the Woolgoolga to Ballina Pacific Highway upgrade.

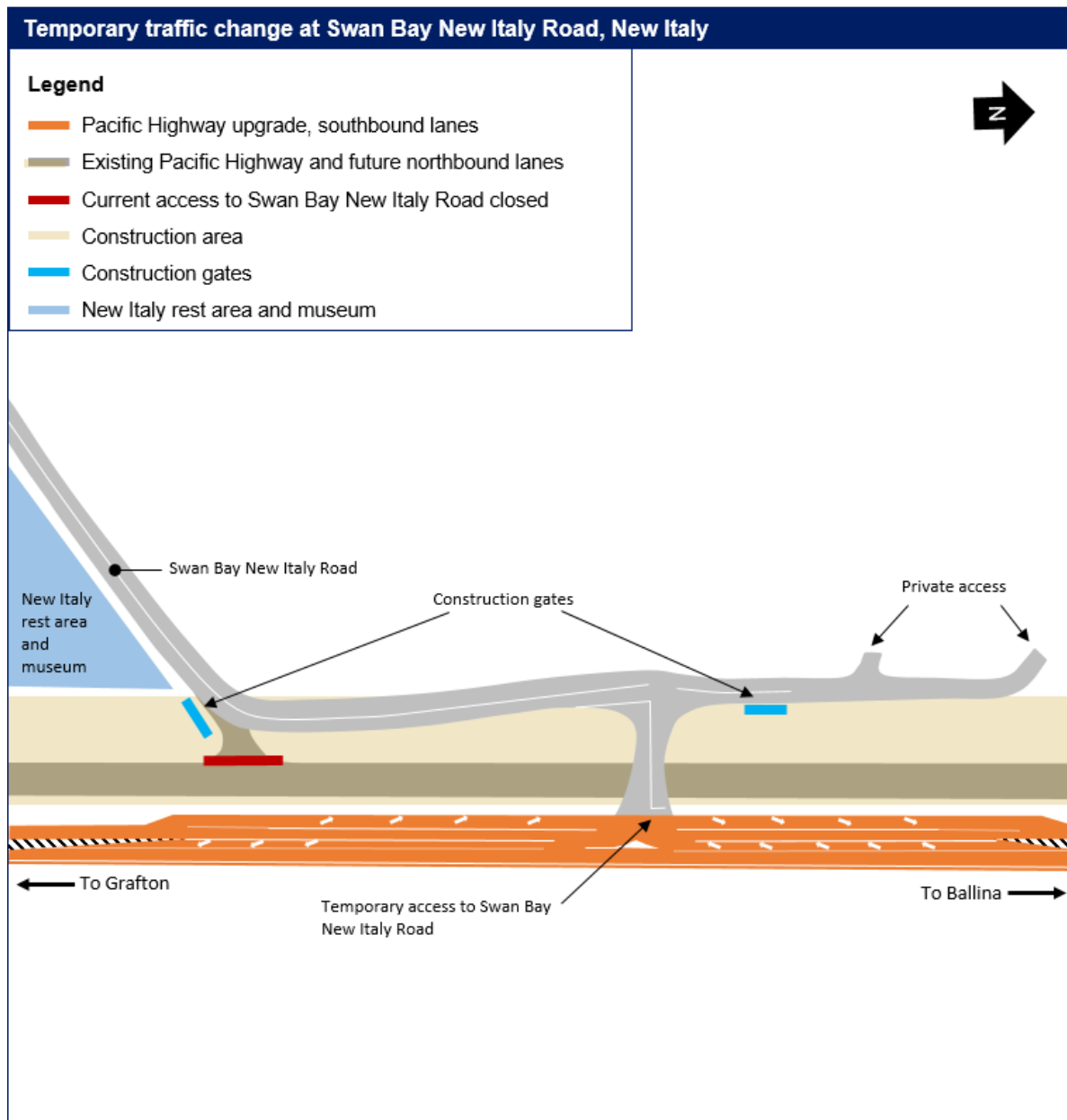
As part of building the upgrade between Devils Pulpit and Woodburn, there will be traffic changes to the Pacific Highway and local road access at New Italy in September, weather permitting.

From September, Pacific Highway traffic will be temporarily moved onto a new section of road, one lane in each direction and access to Swan Bay New Italy Road will temporarily move about 200 metres north. These temporary traffic changes will allow us to maintain capacity on the road network while we safely continue to build the upgrade.



Access to private property and the New Italy rest area and museum will be maintained at all times. Temporary signage will be in place to assist with wayfinding and residents affected by these changes will be notified.

Motorists will be kept informed about dates and the traffic change through electronic message signs and on livetraffic.com.au.



How we manage our work

The project team will use machinery that generates noise, light and vibration. To manage this work, we will:

- turn off machinery when not in use
- direct temporary lighting down and away from homes
- fit equipment with devices to minimise noise, particularly from reversing squawkers
- plan activities close to residents to coincide with normal construction hours, where possible
- monitor noise so we can manage any potential impacts and adjust our work, as required

All work will be carried out in line with the project's Conditions of Approval and Construction Environmental Management Plan.

Work hours

Typically work will be carried out during the project's approved construction hours, which are:

Approved construction hours	
Monday to Friday 7am–6pm	
Saturday 8am–5pm	

In areas where residents live more than 200 metres from the work, extended approved work hours are allowed between 6am and 7am and 6pm and 7pm from Monday to Friday. No work will be carried on Sunday or a public holiday.

Work outside of approved construction hours

To complete the temporary traffic changes, work is required outside approved construction hours. This work will involve implementing traffic control and barriers, line marking, asphaltting and spray sealing and is planned between 6pm and 7am for up to eight nights across various locations in September, weather permitting.

Building next to, over and on existing roads means traffic may be stopped or reduced to one lane while work is carried out. By working at night, delays are minimised and journey times for motorists are less affected.

Traffic changes

To manage queuing and safety, there will be some temporary traffic changes and lane closures that may affect travel times. Please keep to speed limits and follow the direction of traffic controllers and signs. Motorists are encouraged to remember PAC – Plan, Awareness, Caution. For the latest traffic updates, you can call 132 701, visit livetraffic.com or download the Live Traffic NSW app.

We apologise for any inconvenience and thank you for your patience during this important work.

Subscribe now	For more information
We can keep you up to date about what's happening in your area or if you are interested in a specific topic. Register your interest:	 1800 778 900 (toll free)
 1800 778 900 (toll free)	 W2B@pacificcomplete.com.au
 W2B@pacificcomplete.com.au	 pacifichighway.nsw.gov.au
	 Follow NSW Roads
If you need help understanding this information, please contact the Translating and Interpreting Service on 131 450 and ask them to call us on 1800 778 900.	

