



Australian Government

BUILDING OUR FUTURE



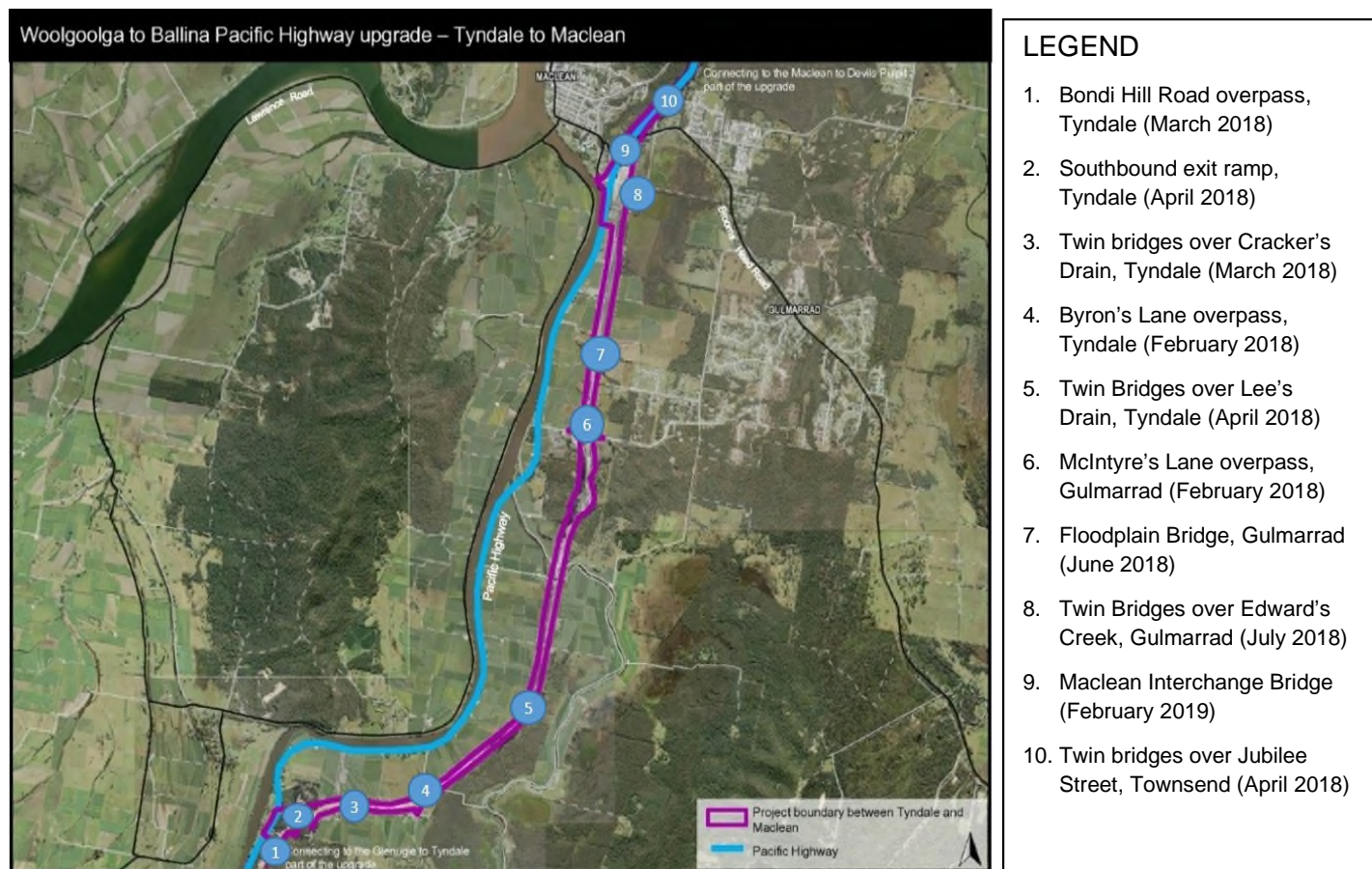
January 2018

Start of bridge construction between Tyndale and Maclean for the Woolgoolga to Ballina Pacific Highway upgrade

The Australian and NSW governments are jointly funding the \$4.36 billion Woolgoolga to Ballina Pacific Highway upgrade. Roads and Maritime Services' Pacific Highway Project Office, Pacific Complete and its contractors partners are working together to deliver the project.

The Woolgoolga to Ballina project team will be building 170 bridges as part of the 155 kilometre upgrade, including the construction of 15 bridges for the main civil work between Tyndale and Maclean. Foundation work for these bridges will start in early February 2018 at Byron's Lane, Tyndale and will continue across various sites from Tyndale to Maclean.

The map below details the piling sites and their proposed start dates, weather permitting.



What is involved with bored piling?

Bored piling involves boring a circular hole in the ground, installing steel reinforcements and filling the bored hole with concrete to form a pile.

A hole is created by the boring machine to install steel reinforcements, and it is then filled with concrete



What is involved with driven steel piling?

Driven steel piling involves pitching and driving pre-fabricated steel piles into the ground. Driving piles, as opposed to drilling bores, can be advantageous because the soil displaced by driving the piles compresses the surrounding soil, resulting in greater friction against the sides of the piles, which increases their load-bearing capacity.

A leader machine drives a steel pile into the ground



How will work affect you?

Piling can create increased noise and vibration. It is likely you will be able to hear piling activities if they are near your property. We will carry out noise and vibration monitoring regularly throughout this work and implement mitigation measures, as required.

Next steps

Once piles are installed, the project team will reinforce and fill each pile with concrete. Once the concrete is set, the top of each pile will be levelled off to establish a base for the construction of the concrete bridge.

Work hours

Typically work will be carried out during the project's approved construction hours:



7am – 6pm Monday – Friday
8am – 5pm Saturdays

In areas where residents live more than 200 metres from the work area, extended work hours are allowed from between 6am and 7am and 6pm and 7pm Monday to Friday. Nearby residents will be notified at least five working days in advance of any activities scheduled outside of these working hours.

For more information

If you have any questions, please contact the Woolgoolga to Ballina project toll free line on 1800 778 900 dial 1, W2B@pacificcomplete.com.au or visit the project website rms.nsw.gov.au/W2B.

We apologise for any inconvenience and thank you for your patience during this important work.



If you need help understanding this information, please contact the Translating and Interpreting Service on 131 450 and ask them to call us on 1800 778 900.